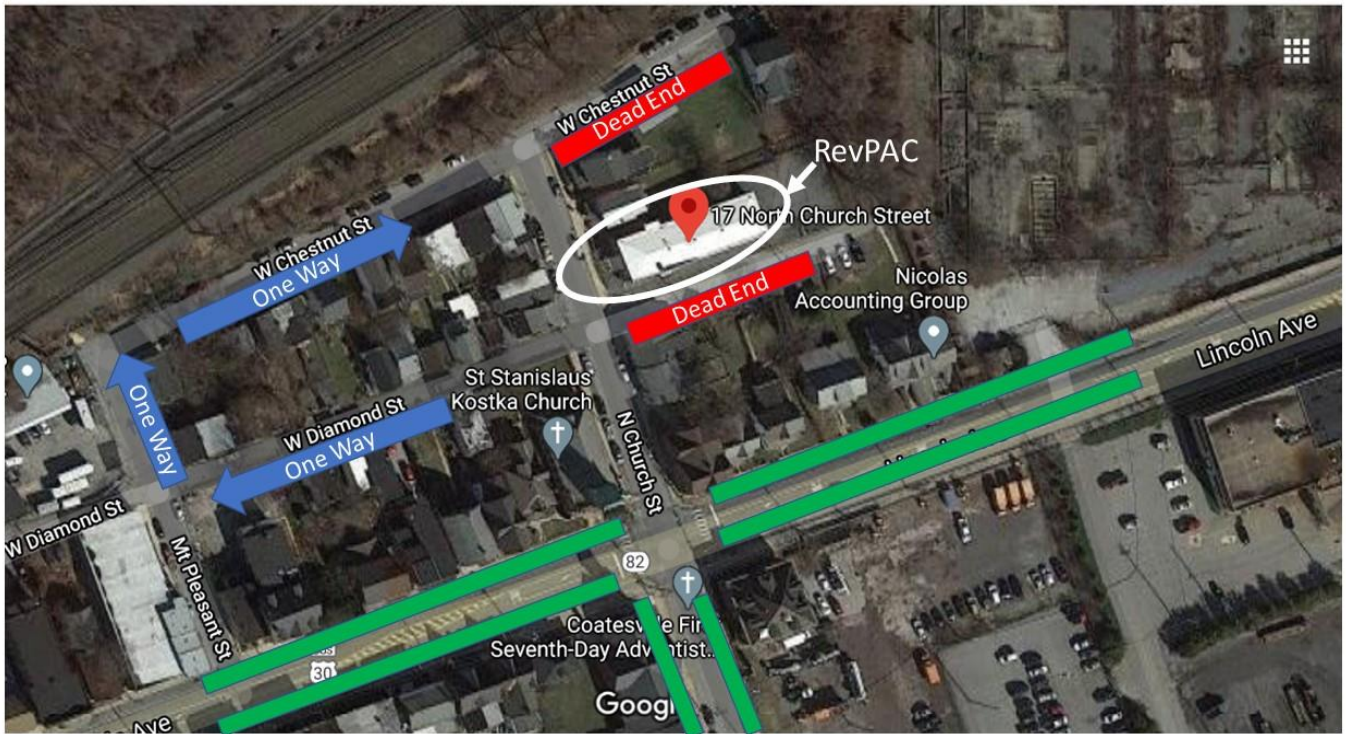


## Parking At RevPAC



Revival Performing Arts Conservatory (RevPAC) is located at 17 North Church Street in Coatesville, just north of Lincoln Highway (US Bus 30).

There are 10 parking spots in the rear of the conservatory, which are reserved for staff, students, and cast members. Ample street parking is available on Lincoln Highway on both sides of the street, and on Church Street south of Lincoln Highway. Please observe local parking restrictions (driveways, fire hydrants, distance from intersections, etc.)

Please do not take the last few spots on the block where the conservatory is. It is a residential street, and we want to be kind to our neighbors.

Note that if dropping off passengers, it may be best to make a left onto Diamond Street just before the conservatory, and come around the block. Otherwise you will need to make a U-turn at the northern end of Church Street.