

SINGLE FAMILY / SMALL HOMES

DATA

NOTE: Monthly rental prices and purchase prices are illustrative only and will be more firmly established through more detailed design, project planning and fundraising. If suggested prices are not attainable or affordable, please let us know.

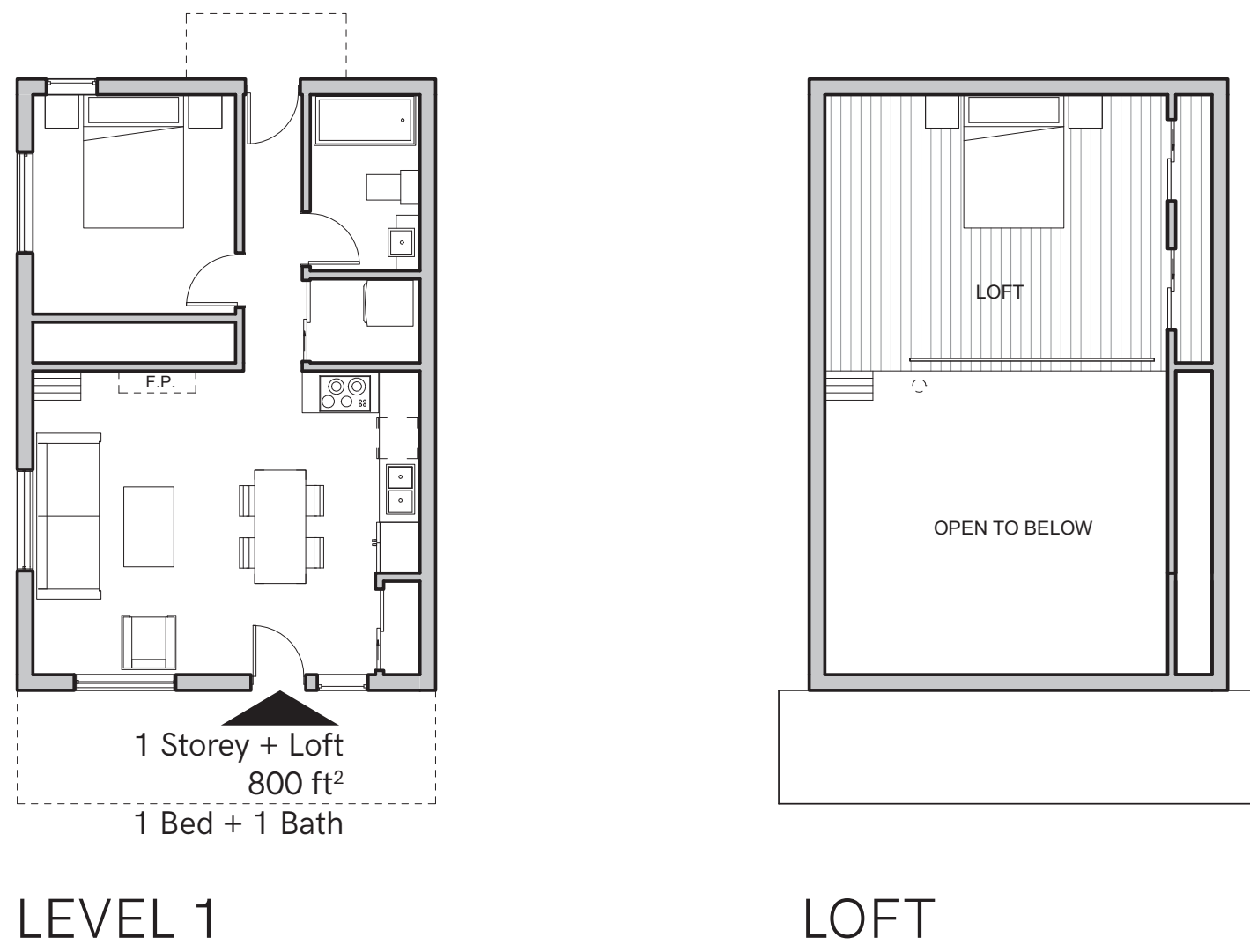
| | Small Home | Small Home - 2 Bed | Single Family with Suite |
|--------------------------|---------------------------------------|---------------------------------------|--------------------------|
| Size | 800 sq ft with loft | 1000 sq ft | 1700 sq ft |
| # Beds | 2 | 2 | 3 or 4 |
| # Baths | 1 | 2 | 3 |
| Parking | Clustered parking with walk-in access | Clustered parking with walk-in access | Surface Parking |
| Affordable Rental | n/a | \$1100 | n/a |
| Attainable Rental | n/a | \$1600 | n/a |
| Attainable Homeownership | \$250,000 | \$325,000 | \$520,000 |

PLEASE Fill out a SURVEY and let us know what type of unit you are interested in living in and what you like about our housing ideas and what we could improve on.
SEE WWW.TOFINOHOUSINGCORP.CA FOR AN ONLINE SURVEY LINK
WE NEED TO HEAR FROM EVERYONE LOOKING FOR HOUSING

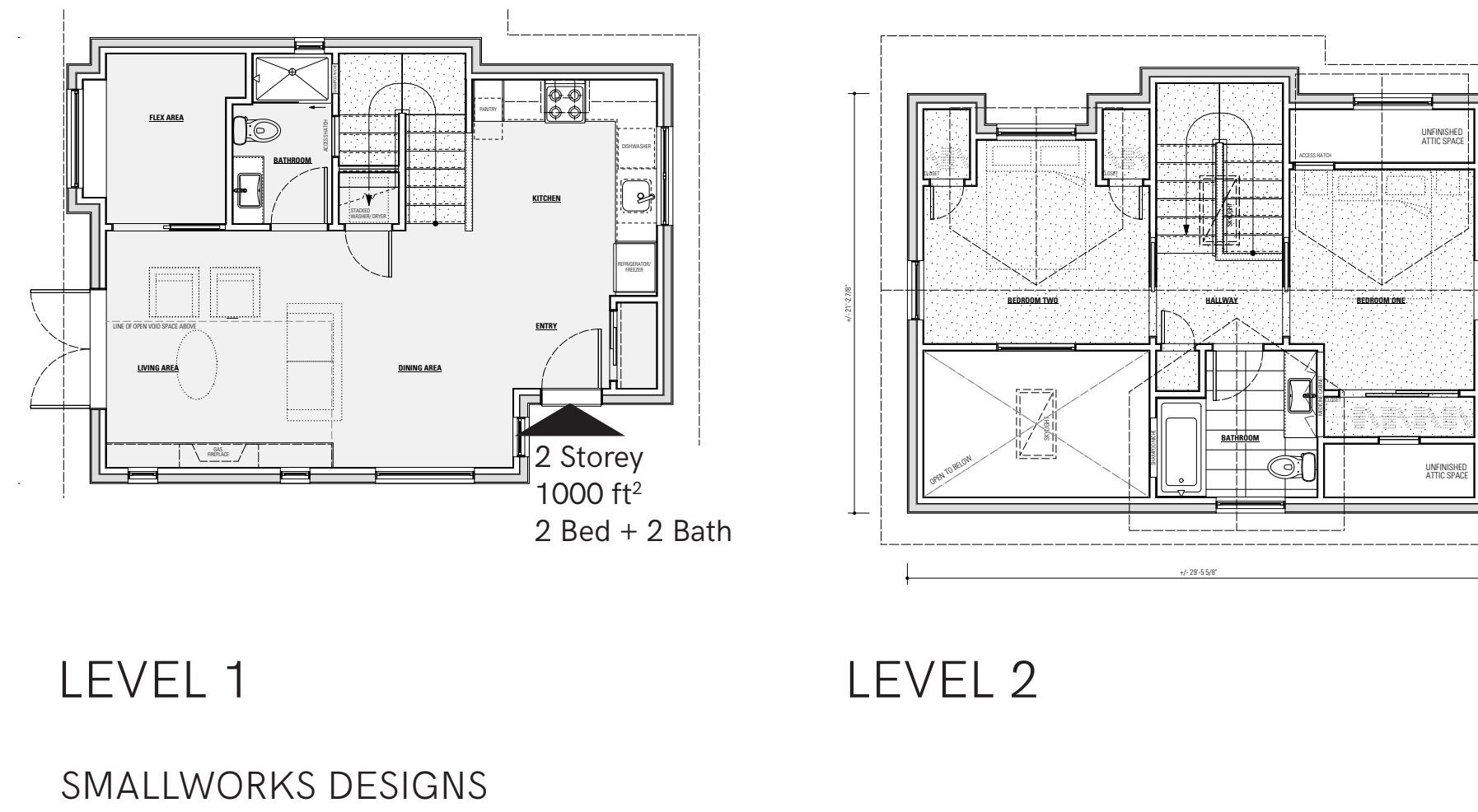


SMALL HOMES IN POCKET NEIGHBOURHOODS

1 BED WITH LOFT



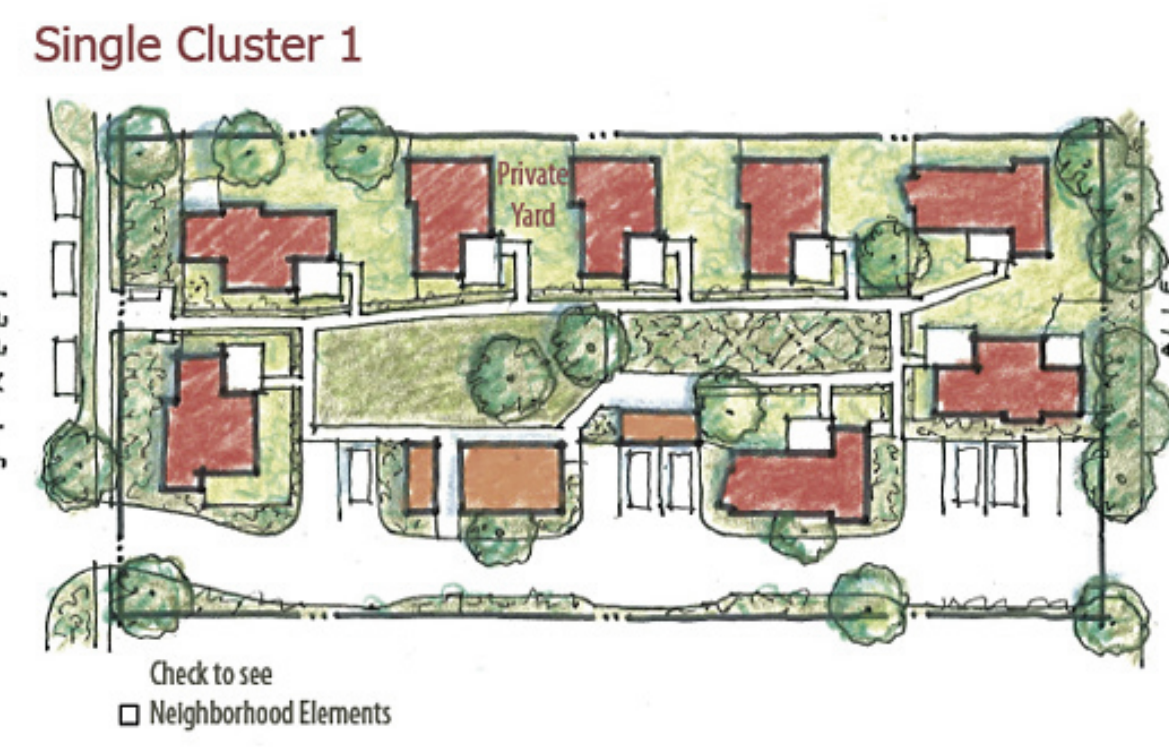
2 STOREY COTTAGE



POCKET NEIGHBOURHOODS



CONOVER COMMONS, REDMOND WA



POCKET-NEIGHBORHOODS.NET



SALT SPRING COMMONS



NARROW LOT UNITS WITH SUITE



ILLUSTRATIVE CHARACTER OF NARROW HOUSING
NO CORRESPONDING PLAN SHOWN

