



RIVERHEAD COMPREHENSIVE PLAN UPDATE

First Central Advisory Committee (CAC) Meeting – January 11, 2021



RIVERHEAD COMPREHENSIVE PLAN UPDATE

Agenda

- Project Overview
- Purpose and Need
- Preliminary Issues & Opportunities
- Approach
- CAC Roles and Responsibilities
- Schedule
- Scope of Work
- Public Outreach Plan
- Existing Conditions
- Next Steps



Source: Riverhead News-Review

Project Overview



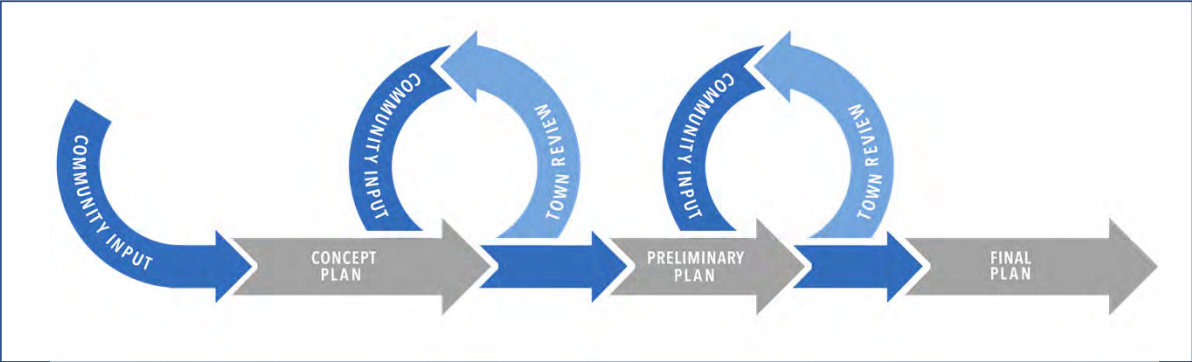
- AKRF and LKMA were selected to update the Town of Riverhead's Comprehensive Plan
- AKRF will lead an extensive public engagement process
- Technical studies:
 - Market study
 - Zoning recommendations
 - Agriculture TDR analysis
 - Transportation & Infrastructure
 - GEIS

Purpose and Need

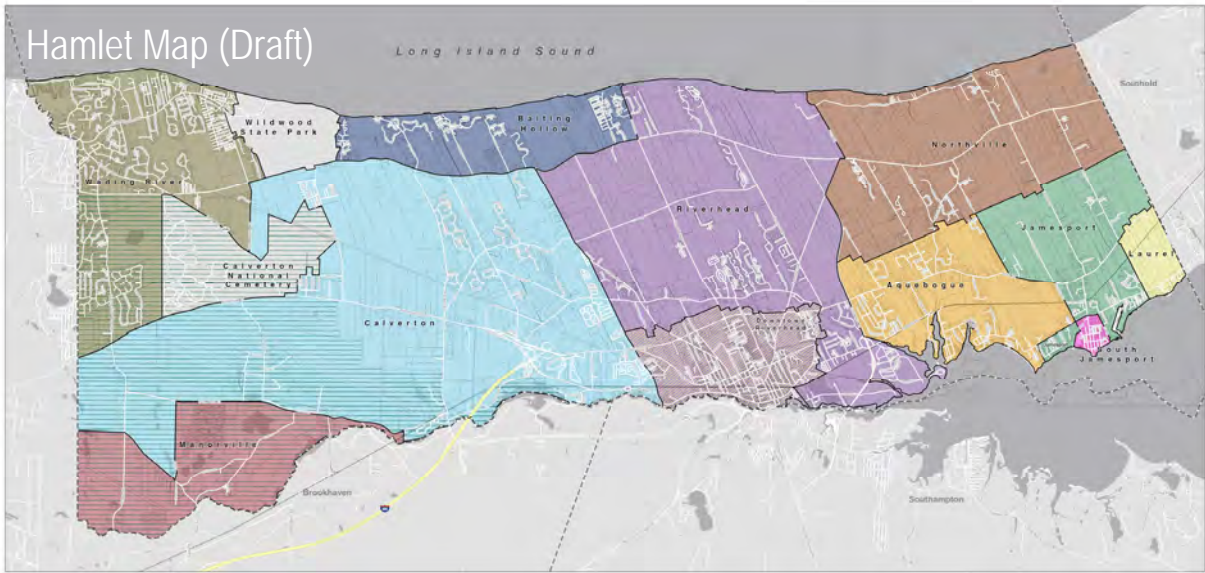


- All Town land use regulations must be in accordance with an adopted comprehensive plan (*New York Town Law §272-A*)
- The plan will guide the future of the Town for the next 10-20 years
- A comprehensive plan identifies the goals and objectives for the immediate and long-range protection, enhancement, growth and development of the Town

Iterative Planning Process



Hamlet Map (Draft)

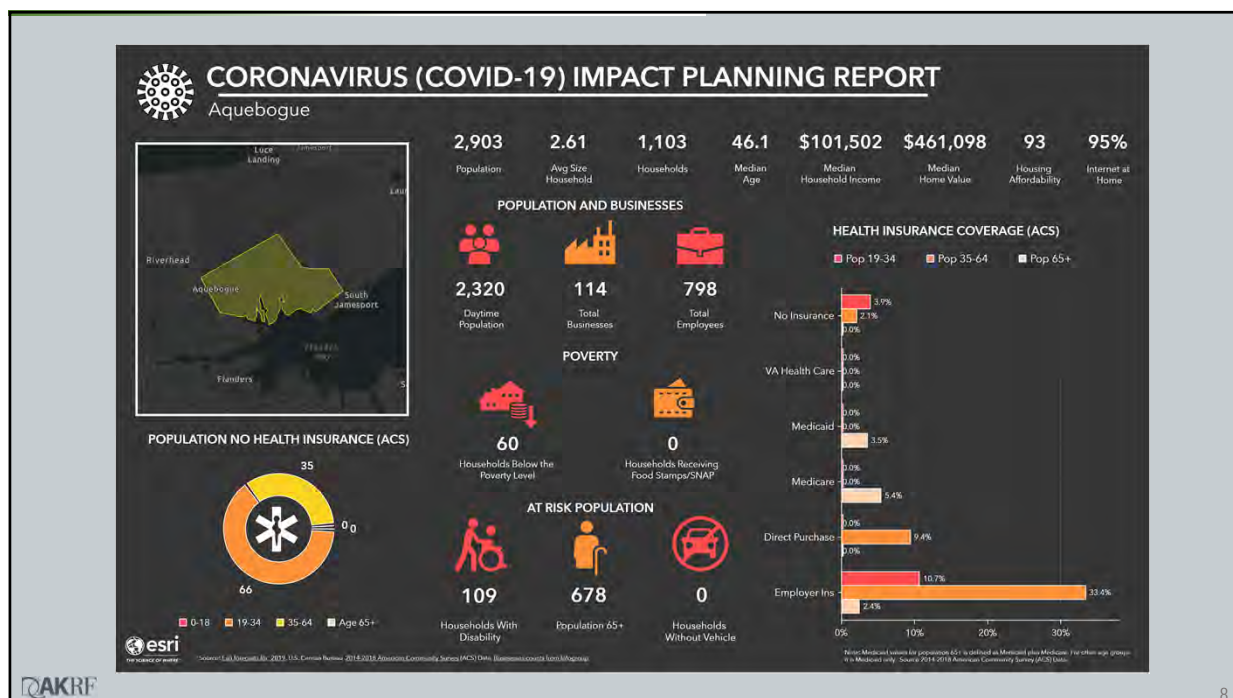


Issues and Opportunities (Preliminary)

- Economic opportunities/employment
- Farmland preservation strategies
- Healthy communities
- Housing/schools
- TOD/Downtown revitalization
- EPCAL
- Route 58/retail and office vacancies
- Traffic and transportation
- Sea level rise/resiliency
- Renewable energy/solar farms



Source: Riverhead News Review – Times Review



Integrative Approach

- AKRF will lead an interdisciplinary team to advance the major tasks:
 - 1) Public Outreach
 - 2) Planning & Economics
 - 3) GEIS
- Work toward integrated, balanced plan
- Address the needs of the Town and the community



Project Schedule

TASK	Month After Executed Contract																	
	1	2	3	4	5	6	7	8	9	10	11	12	13	14	15	16	17	18
	Jan	Feb	Mar	Apr	May	Jun	Jul	Aug	Sep	Oct	Nov	Dec	Jan	Feb	Mar	Apr	May	Jun
Tasks 1 and 2 - Project Kickoff; Background Review																		
Task 3 - Meetings with Town Officials																		
Task 4 - Geographic Areas and Analyses																		
Task 5 - Public Outreach, Surveys, and Inventories																		
Task 6 - Trend Analysis																		
Task 7 - Statement of Community Goals																		
Task 8 - Summary of Issues and Opportunities																		
Task 9 - Preferred Alternative																		
Task 10 - Implementation (including GEIS)																		
A. Scoping																		
B. DGEIS																		
C. Public Hearing																		
D. FGEIS																		
E. Findings																		
Task 11 - Other Deliverables (not including GEIS)																		

★ Dates subject to change

Scope of Work

- Project Kickoff and Background Review
- Geographic Area and Analyses
 - Draft Hamlet Map
- Existing Conditions Inventories
- Preliminary Issues and Opportunities Being Assessed
- Meetings/Interviews with Town Officials
- Community/Stakeholder Engagement
- Bus Tour
- Economic and Market Trends Analysis
- Statement of Community Goals
- Summary of Issues and Opportunities
- Preferred Alternative
- GEIS

Public Outreach Plan

- Central Advisory Committee
- Public and Stakeholder Meetings and Workshops
- Public Attitudinal Survey/Online Engagement
- Supporting Reference Materials (Maps and Inventories)



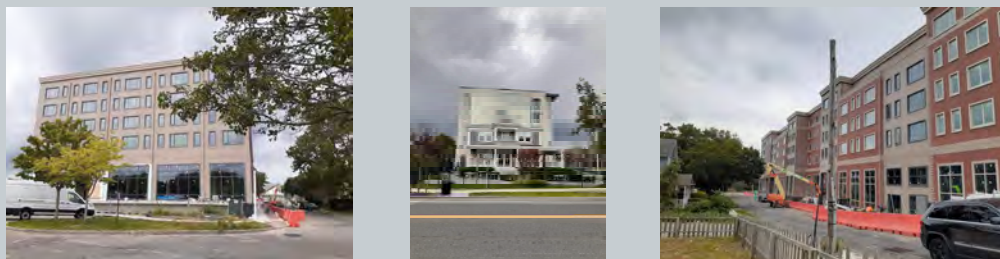
Central Advisory Committee Roles and Responsibilities

- Assisting the Town and the AKRF Team with Community Outreach
- Liaisons to Hamlet Residents and Businesses
- Participating in Hamlet Meetings
- Technical Expertise in Developing Plan Recommendations
- Review and Feedback on Proposed Recommendations
- Review of GEIS and Final Recommendations

Population, Employment & Demographics

Population, Housing, and Employment Changes in the Town				
Data Set	2000	2018	Percent Change	Projected
Population	27,680	33,625	21.5	<50,000
Households	10,749	13,323	23.9	<20,000
Household Size	2.5	2.5	No change	2.5
Housing Units	12,479	16,712	33.9	<19,000
Employment	13,820	19,150	38.6	N/A

Sources: Town of Riverhead 2003 Comprehensive Plan and 2014-2018 American Community Survey.

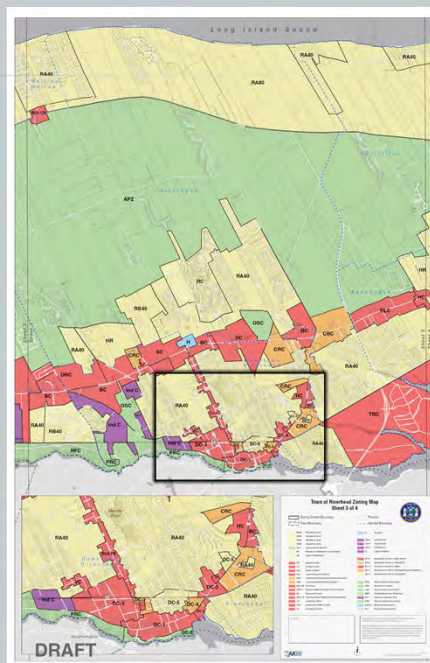


Demand Considerations for Projections

- Short- and Long-Term Impacts
 - Population and Demographics
 - Employment/Work-From-Home
 - Relocation from NYC to Suburbs
 - Education/Home Schooling
 - Transportation/Infrastructure
- Impact of E-Commerce
 - Retail/Brick and Mortar Stores Closing
 - Redevelopment of Former Commercial Properties
 - Supply and Demand
- Future Impact of EPCAL
 - Employment
 - Tax Base
 - Roads and Highways
 - Rail Freight
- Global Warming
 - Sea Level Rise
 - Alternative Energy

Zoning

- Zoning Map Changes (Ongoing)
 - Updated zoning map with changes pursuant to resolutions since 2015
 - Broke out Town into four sections
- Used a combination of color coding to distinguish major types of zoning, with black labels to indicate specific district
- Will include table of the changes in the legend



Transportation and Infrastructure

- Inventory of Existing Systems
 - Transportation
 - Infrastructure
- Assess Capacity and Condition
- Determine Current Demand
- Project Future Demand
- Develop Recommendations to Meet Future Demand
 - Capacity Enhancements
 - Demand Management
 - Policy

Existing Transportation System

- Roadways
 - 23 miles NY State Highways
 - 14 miles Suffolk County Roads
 - 178 miles Town Roadways
- Public Transportation
 - One MTA / LIRR Station (Riverhead)
 - Five Suffolk Transit Bus Routes



Existing Travel Characteristics

- Trip Length (All)
 - 0 to 10 Miles – 49%
 - Ten to 15 Miles – 15%
 - Fifteen to 20 Miles - 11%
 - Longer than 20 Miles – 25%

- Trip Mode (All)
 - Drive Alone – 83%
 - Drive with Passenger(s) – 12%
 - Transit – 1%
 - Walk / Bike 3%
 - Other – 1%



Existing Infrastructure and Utility Services

1. Drinking Water
2. Sanitary/Sewer
3. Electric Service/Alternative Energy
4. Natural Gas Service
5. Solid Waste
6. Cellular Telephone / WiFi
7. Cable TV
8. Internet

Next Steps



- Community-wide Meetings
- Town/Stakeholder Interviews (ongoing)
- Public Attitudinal Survey
- Healthy Communities Assessment
- Economic Trends Analysis
- Transportation & Infrastructure Report