

An adjunct to diet and exercise  
to improve Glycemic control  
in patients with Type 2 Diabetes Mellitus

Rx

# Vildawalf M<sub>50/500</sub>

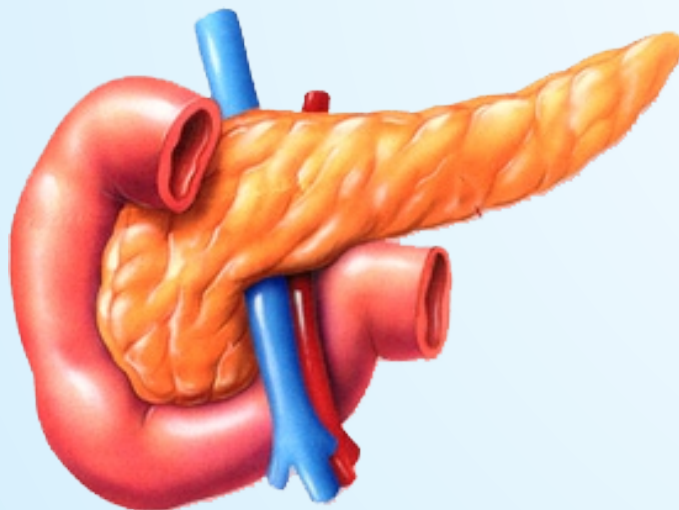
Vildagliptin 50 mg & Metformin 500 mg Tablets

- A potent and selective dipeptidyl-peptidase-4 (DPP-4) inhibitor that improves glycemic control
- Vildagliptin add on therapy in patients with Metformin
- Enhances the sensitivity of beta cells to glucose, resulting in improved glucose-dependent insulin secretion
- Well tolerated and efficacious in improving glycemic control in patients with type 2 diabetes mellitus (T2DM)

Rx

## Vildawalf M<sub>50/500</sub>

The Ideal Gliptin for  
surpass Diabetes Control



# Dapawalf-10

Dapagliflozin 10mg Tablets



## TO TREAT TYPE 2 DIABETES

To improve glycemic control in patients with Type 2 Diabetes Mellitus.

### Dapagliflozin 10 mg Tablets

For patients with type 2 diabetes who cannot take metmorfin.

For heart failure – it can reduce the risk of the heart getting weaker, and help symptoms such as tiredness

For chronic kidney disease – it helps to slow the rate at which the condition gets worse

Dapagliflozin works on your kidneys. It increases the amount of sugar removed from your body when you urinate. It can also reduce the amount of work your heart needs to do to pump blood around the body.

May take up to a week for it to take full effect.

Dapagliflozin does not make you put on weight. In fact, some people find they lose weight.

## For longer action in Diabetes

Rx

# Glimwalf

M1

M2

Metformin Hydrochloride 500 mg (SR) with  
Glimepiride 1 & 2 mg Tablets

### Metformin

- ➡ Decreases HbA1c by 1.2 to 1.9% in Patients with T2DM.
- ➡ It doesn't produce Hypoglycemia in normal subjects.

### Glimepiride

- ➡ An Antidiabetic with least risk of Hypoglycaemia.
- ➡ Increase Peripheral Glucose utilization by 29% .
- ➡ Controls Blood Glucose Without Deleterious changes.
- ➡ Enhanced efficiency compared to other combinations.

## Indications :

Type 2 DM Patients

who do not respond to Mono therapy

Rx

# Glimwalf

The right treatment in **T2DM**