

4K HD 8MP Color Microscope Camera



Brand New 4K HD 8MP color camera provides beautiful 4K high definition images for scientific / industrial applications. Blazing **“real time”** live speed of **60fps** (no on-screen smear or lag) in full 4K (3840×2160 - HDMI) unrivaled color fidelity and on-board image capturing capability. Live on-screen measuring, scaling, editing, and counting.

New 4K HD (3840×2160) 13.3" Retinal Display mounted directly onto the camera with tilting control for optimum viewing angle keeping the footprint of the entire system small. The camera can run, capture and measure all without a computer via simple mouse control.

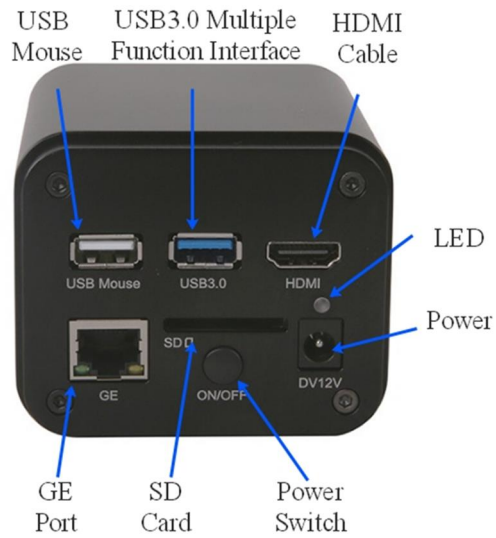
Or run a simultaneous live image output to a 4K HD retinal display via HDMI and to a computer via USB 3.0 and capture and measure via the included software. Also runs on a WLAN Wireless (**Wi-Fi**) with the included **Wi-Fi** wireless adapter or even via a LAN line!!

Images can be saved directly to a PC / Mac / Phone / Tablet, or directly on the camera with the on-board 16GB SD card or USB 3.0 thumb drive.

For a demo contact us at: Microscope Systems, Inc. (800) 674-3714 - <http://microscope-systems.com>
Your Local Sales / Support person is Kurt Neumann - Cell phone (919) 906-7943 - email Kurt@microscope-systems.com



MICROSCOPE SYSTEMS



For a demo contact us at: Microscope Systems, Inc. (800) 674-3714 - <http://microscope-systems.com>
Your Local Sales / Support person is Kurt Neumann - Cell phone (919) 906-7943 - email Kurt@microscope-systems.com



MICROSCOPE SYSTEMS

4K HD Camera is perfect used in the field of medical microscope imaging, industrial measuring / detection and machine vision. It provides functions to fully control the camera and present the video stream processed by sophisticated color engine at high speed.

Diversified useful tools are provided for specific applications.

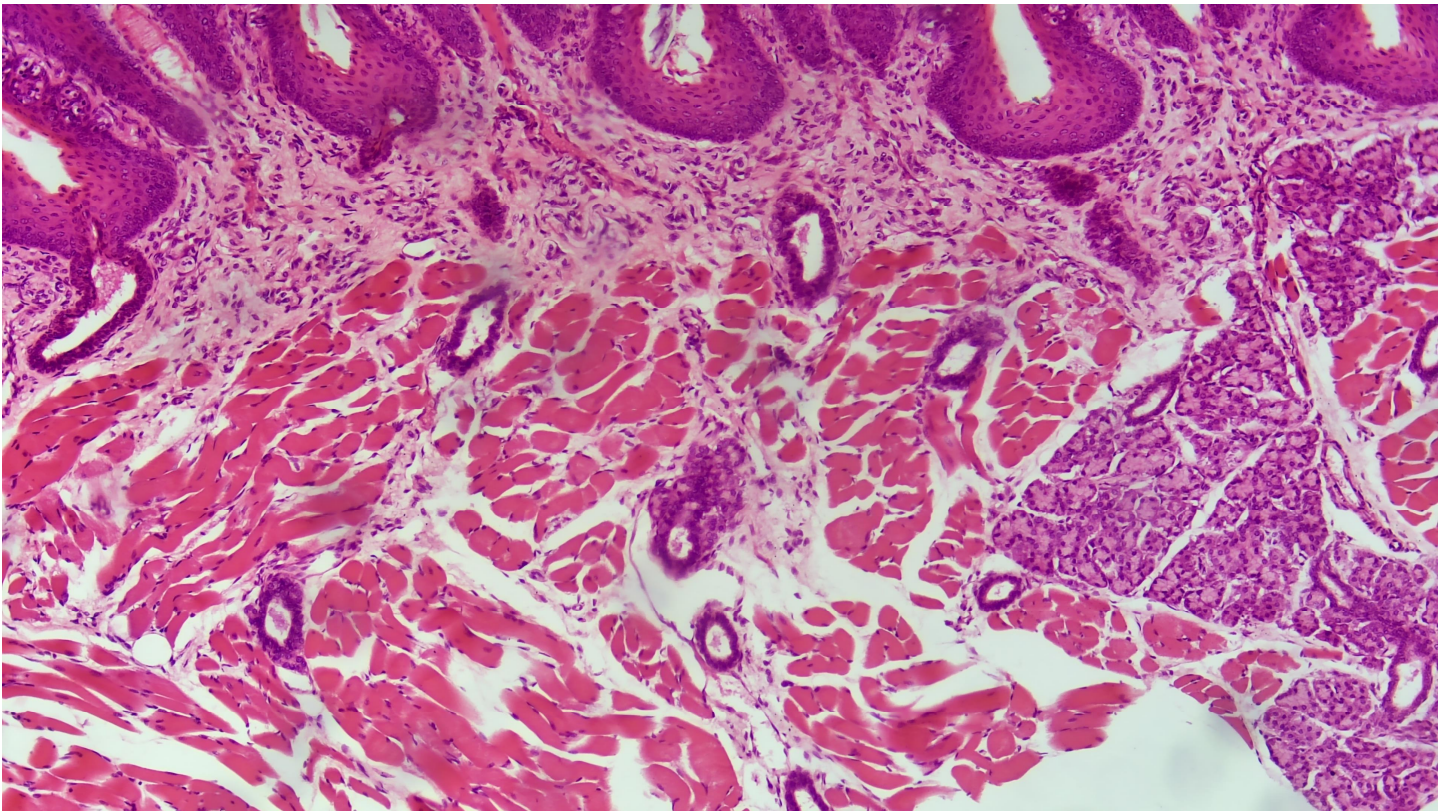
- ◆ Image stitching - Live / Still
- ◆ Extended Depth of Field - Live / Still
- ◆ High Dynamic Range (HDR)
- ◆ Report: supports default/customized report in Word/Excel files, one-click report generation.
- ◆ Color Composition for fluorescence application
- ◆ Cell Counting: Manual and automatic cell counting
- ◆ Comprehensive measurements: Angles (3 or 4 points), Point, Lines (arbitrary/horizontal/vertical), Parallel lines, Rectangles, Ellipse, Circles, Annulus, Two circle, Arc, Text, Polygons, Curves
- ◆ Video Overlay
- ◆ Digital Binning
- ◆ Flat Field / Dark Field Correction
- ◆ Sophisticated Image Processing functions

Multi-language mechanism to support random language, which includes but not limited to English, French, German, Indonesian, Japanese, Polish, Russian, Chinese, Turkish, and more. Currently supports 16 languages.

Comprehensive SDK for different platform(s) can be provided for professional software developers, including Windows, Mac, and Linux (including x86 and ARM architecture).

Twain and DirectShow drivers available.

Sample Image Taste Bud



MICROSCOPE SYSTEMS

(800) 674-3714 - <http://microscope-systems.com>



What comes in the box

- 4K HD Digital Camera Body
- Power Adaptor: Input: AC 100~240V 50Hz/60Hz, Output: DC 12V 1A
- USB Mouse
- HDMI 2.0 Cable
- High-speed USB3.0 A male to A male gold-plated connectors cable /2.0m
- CD Imaging Software (Driver & utilities software)
- SD Card (16G or above; Speed: Class 10)
- USB WLAN adapter
- 13.3" 4K HD Retinal Display / Tilt Mounting Adapter / Y Power Cable—Splitter / Tool



MICROSCOPE SYSTEMS

(800) 674-3714 - <http://microscope-systems.com>

MS60HD Datasheet

Order Code	Sensor & Size(mm)	Pixel(μm)	G Sensitivity Dark Signal	FPS/Resolution	Binning	Exposure
MS60HD	4K/Sony IMX485(C) 1/1.2"(11.14×6.26)	2.9x2.9	2188mv with 1/30s	60@3840*2160(HDMI, USB3) 60@1920*1080(HDMI) 30@3840*2160(WiFi, LAN)	1x1	0.04ms~2000ms

Model	USB Mode	Sensor Output	FPS/ Resolution
MS60HD	device	30fps/3840*2160	30fps/3840*2160 (HDMI/LAN/USB) 30fps/3840*2160 (mp4 video record) 3840*2160 (Image Capture)
	host	60fps/3840*2160	60fps/3840*2160 (HDMI & USB3) 30fps/3840*2160 (LAN/WLAN) 60fps/3840*2160 (mp4 video record) 3840*2160 (Image Capture)



MS60HD Features	
Sensor	Sony IMX485 CMOS
Sensor Size	1/1.2" (11.14×6.26)
Pixel(m)	2.9×2.9
Preview Resolution	8MPixel (HDMI /LAN / USB)
Capture Resolution	8MPixel
Frame Rate	60fps@3840×2160(HDMI & USB3)L 30fps@3840×2160(network)L 30fps@3840×2160(USB2)
G Sensitivity	2188mv with 1/30s
Dark Signal	0.39mv with 1/30s
Capture	SD cardLUSB flash driver
Exposure Mode	Auto/Manual
Exposure Time	0.04ms~2000ms
White Balance	Auto/Manual
Setting	exposure, gain, white balance, color adjustment, sharpness, 3D denoising
Built-in Software	XCamView
PC Software	ImageView
Data Interface	HDMI, USB3.0,Wifi, LAN, SD card
Optical Port	Standard C-Mount
Camera Size	88.00×65.00×78.00(mm)
Camera Weight	About 1.00KG
Camera Housing	CNC Precision Machining Shell

4K 13.3" Monitor

Frame Rate / Resolution: 60fps / 3840*2160 (HDMI)



For a demo contact us at: Microscope Systems, Inc. (800) 674-3714 - <http://microscope-systems.com>
Your Local Sales / Support person is Kurt Neumann - Cell phone (919) 906-7943 - email Kurt@microscope-systems.com



MICROSCOPE SYSTEMS