

# MUNEX<sup>M</sup>

Single Phase Hybrid Inverter 

Home Energy Storage 

Lithium Iron Phosphate Battery 

Micro inverter 



## Energy storage solutions

<https://mitsltd.com>

# CATALOGUE

## GLT1000A Series Single Phase Hybrid Inverter

01

<i>GLT1000A-1800-12V</i>	01
<i>GLT1000A-3600-24V</i>	01
<i>GLT1000A-5000-48V</i>	01
<i>GLT1000A-6000-48V-B</i>	03
<i>GLT1000A-12000-48V-B</i>	05

---

## GLT2000 Series Single Phase Hybrid Inverter

07

<i>GLT2000-1800-12V</i>	07
<i>GLT2000-3500-24V</i>	07
<i>GLT2000-6200-48V</i>	07
<i>GLT2000-8200-48V</i>	07

---

## GF800 Series Lithium Iron Phosphate Battery

09

<i>GF800-512-300</i>	09
<i>GF800-512-200</i>	11
<i>GF800-256-300</i>	13
<i>GF800-256-200</i>	13
<i>GF800-256-100</i>	15
<i>GF800-512-100</i>	15

---

## Lithium Iron Phosphate Battery

17

<i>12V/100Ah</i>	17
<i>12V/200Ah</i>	17
<i>12V/300Ah</i>	17

---

## YV Series Micro inverter

20

<i>YV400-PRO</i>	20
<i>YV500-PRO</i>	20
<i>YV600-PRO</i>	20
<i>YV800-PRO</i>	22
<i>YV800-EU</i>	24
<i>YV1000-EU</i>	24
<i>YV1200-EU</i>	24
<i>YV1600-EU</i>	26
<i>YV2000-EU</i>	26
<i>YV2250-EU</i>	26



# Single Phase Hybrid Inverter

**GLT1000A-1200-12V**

**GLT1000A-3600-24V**

**GLT1000A-5000-48V**



Built-in 100A  
Solar Charger



Wide MPPT  
Range 40-500V



Workable with  
Generator



Complete CE  
Certificate



BMS  
Support Lithium/  
Lead-acid Battery



Lithium Battery  
Activation

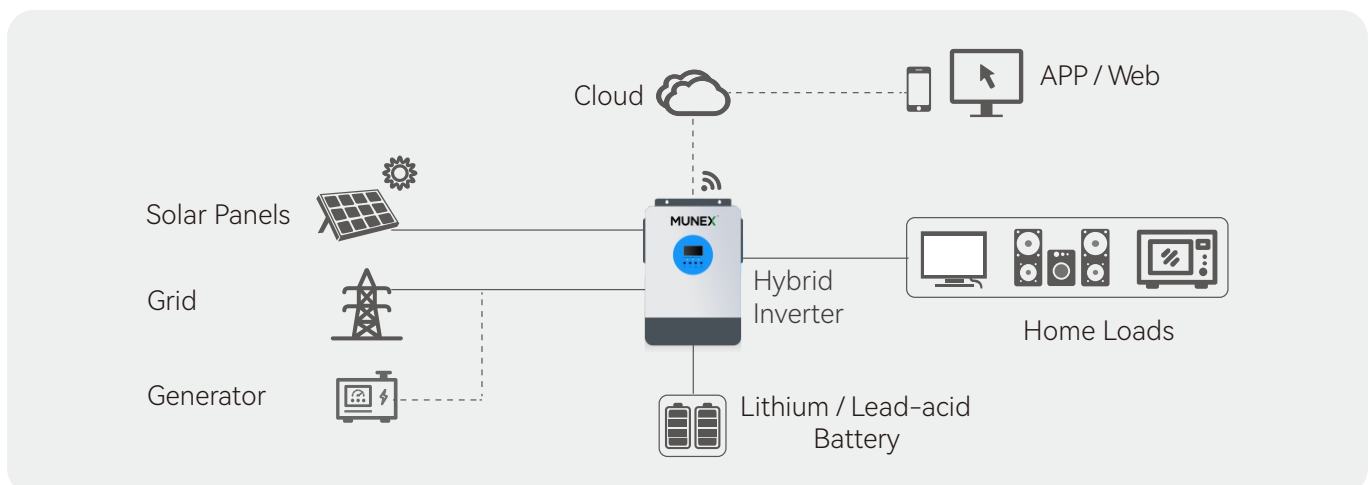


Detachable  
Dust Cover



WiFi  
Monitoring

## SYSTEM DIAGRAM



# TECHNICAL SPECIFICATION

Model	GLT1000A-1200-12V	GLT1000A-3600-24V	GLT1000A-5000-48V
<b>AC INPUT</b>			
Rated Input Voltage (VAC)	208 / 220 / 230 / 240; L + N + PE		
Voltage Range (VAC)	90~280±3 (normal mode); 170~280±3 (UPS mode)		
Frequency (Hz)	50 / 60 (Auto Adaptive)		
<b>AC OUTPUT</b>			
Rated Capacity (kW)	1.2	3.6	5
Surge Power (kVA)	3.6	5.7	10
Voltage (VAC)	208 / 220 / 230 / 240		
Power Factor (PF)	1		
Frequency	50/60Hz ± 0.1%		
Switch Time (ms)	10 (normal mode) / 10 (UPS mode)		
Wave Form	Pure Sine Wave		
Overload Capacity (Battery Mode)	60s@102%~110% load; 10s@110%~130% load; 3s@130%~150% load; 0.2s@>150% load		
Max. Efficiency (Battery Mode)	93%@12VDC	92.7%@24VDC	93%@48VDC
Parallel Quantity	NA	NA	9
<b>CHARGER (PV / AC)</b>			
Solar Charger Type	MPPT		
Max. PV input Current / Input Power	14A/1000W	18A/5000W	18A/6000W
MPPT Range@Operating Voltage (VDC)	20~100	40~450	120~450
Max. PV Open Circuit Voltage (VDC)	125	500	500
Max. PV Charge Current (A)	60	100	80
Max. AC Charge Current (A)	60	100	80
Max. Charge Current (PV + AC) (A)	60	100	80
<b>BATTERY</b>			
Rated Voltage (VDC)	12	24	48
Floating Charge Voltage (VDC)	13.5	27	54
Overcharge Protection (VDC)	15.3	30.5	61
Batter Type	Lithium and Lead-acid		
<b>INTERFACE</b>			
HMI	LCD		
Interface	RS485 / RS232 / USB / Dry Contact		
Monitoring	WiFi (Optional)		
<b>GENERAL DATA</b>			
Ingress Protection	IP20		
Operating Temperature	-10°C~50 °C		
Relative Humidity	5% ~ 95% (Non-condensing)		
Storage Temperature	-15°C~60°C		
Net Weight (kg)	7	8	9
Dimensions (W*H*D)	347*236*90mm (without bracket)	444.5*289*100.5mm (without bracket)	534*306*117mm (without bracket)
Max. Operating Altitude	4000m (Derating above 1000m)		

# Single Phase Hybrid Inverter

**GLT1000A-6000-48V-B**



Built-in 120A  
Solar Charger



Wide PV Input Voltage  
Range 60-500V



27A  
MAX PV Input



Dual AC Out



9 Inverter in  
Parallel



BMS  
Support Lithium/  
Lead-acid Battery



Lithium Battery  
Activation



Feed-in  
to Grid

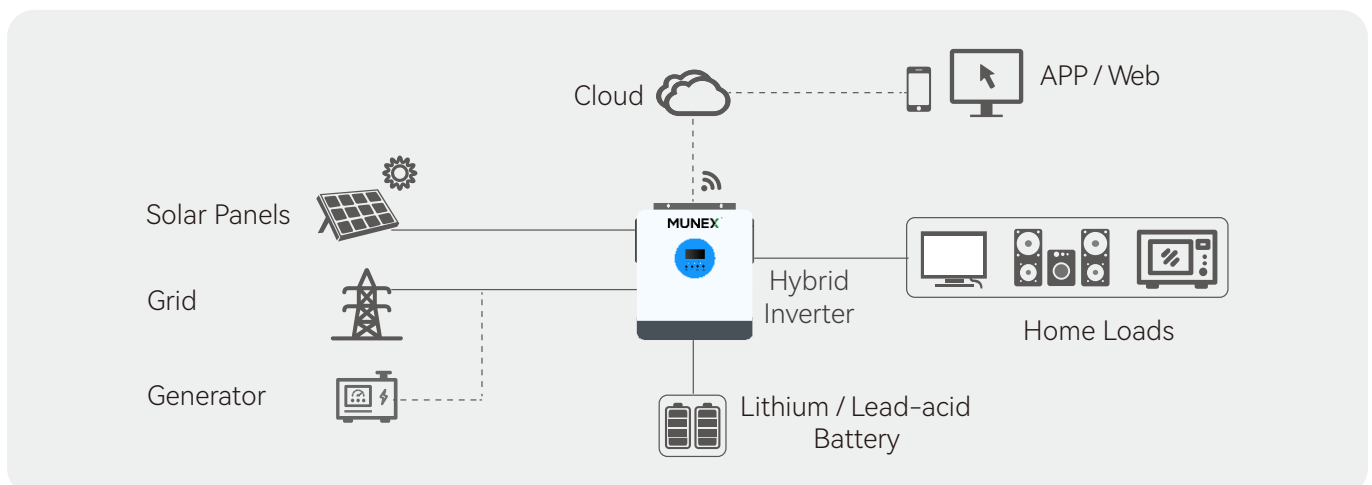


WiFi Monitoring  
(optional)



5 Inch  
Display

## SYSTEM DIAGRAM

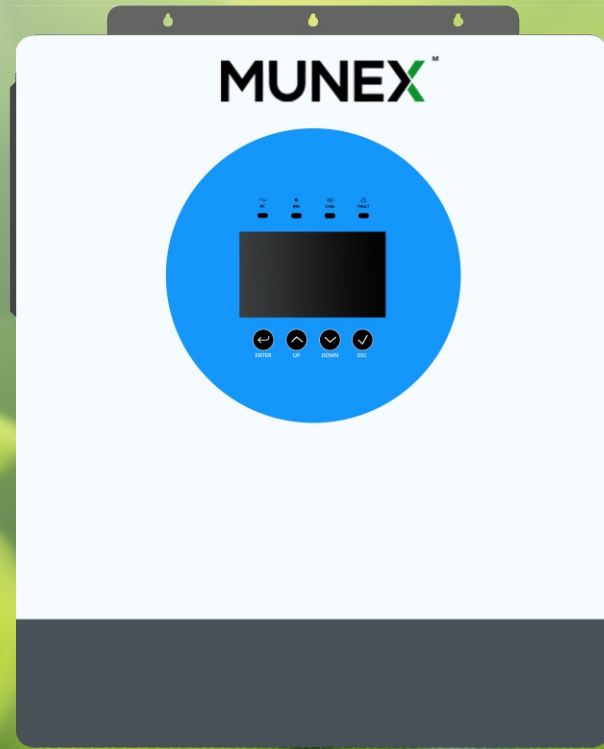


# TECHNICAL SPECIFICATION

Model	GLT1000A-6000-48V-B
<b>AC INPUT</b>	
Rated Input Voltage (VAC)	208 / 220 / 230 / 240; L + N + PE
Voltage Range (VAC)	90~280 (APP/GEN mode); 170~264 (UPS mode)
Frequency (Hz)	50 / 60 (Auto Adaptive)
<b>AC OUTPUT</b>	
Rated Capacity (kVA/kW)	6.5
Surge Power (kVA)	12
Voltage (VAC)	208 / 220 / 230 / 240
Power Factor (PF)	1
Frequency (Hz)	50/60Hz
Switch Time (ms)	10(APP/UPS mode), 20(GEN mode)
Wave Form	Pure Sine Wave
Overload Capacity (Battery Mode)	1min@102%-120% Load, 10s@120%-200% Load
Max. Efficiency (Battery Mode)	94%@48VDC
Parallel Quantity	9
<b>CHARGER (PV / AC)</b>	
Solar Charger Type	MPPT
Max. PV input Current / Input Power	27 / 9000
MPPT Range@Operating Voltage (VDC)	60~450
Max. PV Open Circuit Voltage (VDC)	500
Max. PV Charge Current (A)	120
Max. AC Charge Current (A)	120
Max. Charge Current (PV + AC) (A)	120
<b>BATTERY</b>	
Rated Voltage (VDC)	48
Max. Charging Current (A)	120
Max. Discharging Current (A)	140
Batter Type	Lithium and Lead-acid
<b>INTERFACE</b>	
HMI	5 inch LCD
Interface	RS232 / RS485 / CAN / Parallel Ports
Monitoring	WiFi (optional/built-in/external)
<b>GENERAL DATA</b>	
Ingress Protection	IP21
Operating Temperature	-10°C~60 °C
Relative Humidity	5% ~ 95% (Non-condensing)
Storage Temperature	-15°C~60°C
Net Weight (kg)	8.4
Dimensions (W*H*D)	362*417.5*116.5mm (Without bracket)
Max. Operating Altitude	4000m (Derating above 2000m)

# Single Phase Hybrid Inverter

**GLT1000A-12000-48V-B**



Built-in 160A  
Solar Charger



Wide PV Input Voltage  
Range 60-500V



Dual MPPTs  
Input



27A+27A  
MAX PV Input



Dual AC Out



BMS  
Support Lithium/  
Lead-acid Battery



Lithium Battery  
Activation



6 Inverter in  
Parallel

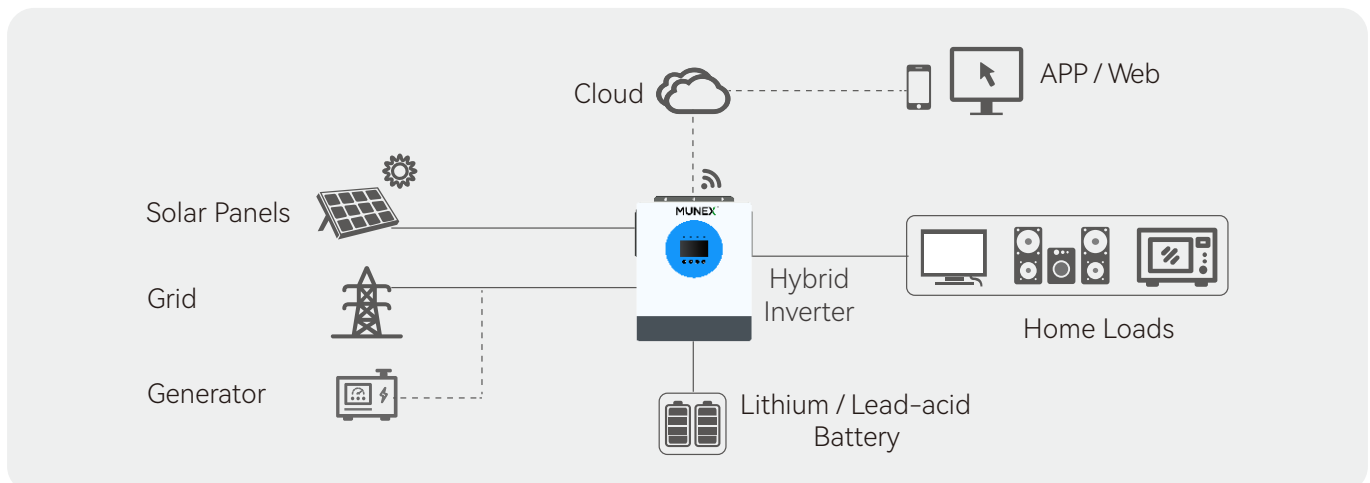


Feed-in  
to Grid



WiFi Monitoring  
(optional)

## SYSTEM DIAGRAM



# TECHNICAL SPECIFICATION

Model	GLT1000A-12000-48V-B
<b>AC INPUT</b>	
Rated Input Voltage (VAC)	220 / 230 / 240; L + N + PE
Voltage Range (VAC)	90~280 (APP/GEN mode); 170~264 (UPS mode)
Frequency (Hz)	50 / 60 (Auto Adaptive)
<b>AC OUTPUT</b>	
Rated Capacity (kVA/kW)	12
Surge Power (kVA)	24
Voltage (VAC)	220 / 230 / 240
Power Factor (PF)	1
Frequency (Hz)	50/60Hz
Switch Time (ms)	10(APP/UPS mode), 20(GEN mode)
Wave Form	Pure Sine Wave
Overload Capacity (Battery Mode)	1min@102%-125% Load, 10s@125%-200% Load
Max. Efficiency (Battery Mode)	94%@48VDC
Parallel Quantity	6
<b>CHARGER (PV / AC)</b>	
Solar Charger Type	Dual MPPTs
Max. PV input Current / Input Power	Using One MPPT: 27A/9KW; Using Two MPPTs: 27A/Per MPPT, 15kW/Total
MPPT Range@Operating Voltage (VDC)	60~450
Max. PV Open Circuit Voltage (VDC)	500
Max. PV Charge Current (A)	160
Max. AC Charge Current (A)	160
Max. Charge Current (PV + AC) (A)	160
<b>BATTERY</b>	
Rated Voltage (VDC)	48
Max. Charging Current (A)	160
Max. Discharging Current (A)	220
Batter Type	Lithium and Lead-acid
<b>INTERFACE</b>	
HMI	LCD
Interface	RS232 / RS485 / CAN / Parallel Ports
Monitoring	WiFi (optional/built-in/external)
<b>GENERAL DATA</b>	
Ingress Protection	IP21
Operating Temperature	-10°C~60 °C
Relative Humidity	5% ~ 95% (Non-condensing)
Storage Temperature	-15°C~60°C
Net Weight (kg)	15.2
Dimensions (W*H*D)	459.3*562*125.5mm (Without bracket)
Max. Operating Altitude	4000m (Derating above 2000m)

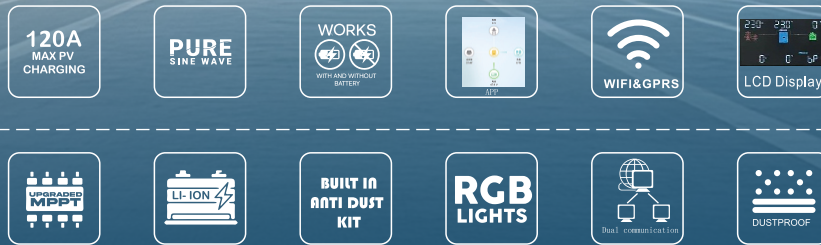
# Single Phase Hybrid Inverter

**GLT2000-1800-12V**

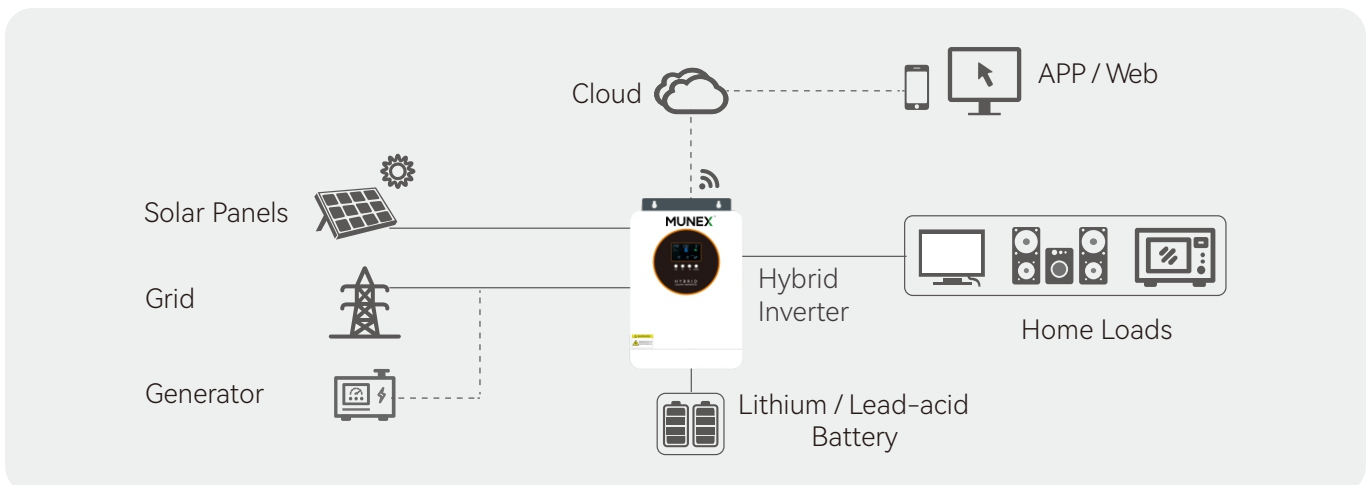
**GLT2000-3500-24V**

**GLT2000-6200-48V**

**GLT2000-8200-48V**



## SYSTEM DIAGRAM



# TECHNICAL SPECIFICATION

Model	GLT2000-1800-12V	GLT2000-3500-24V	GLT2000-6200-48V	GLT2000-8200-48V
<b>LINE MODE SPECIFICATIONS</b>				
Input Voltage Waveform	Sinusoidal (utility or generator)			
Nominal Input Voltage	230Vac			
Low Loss Voltage	170Vac±7V (UPS);		90Vac±7V (Appliances)	
Low Loss Return Voltage	180Vac±7V (UPS);		100Vac±7V (Appliances)	
High Loss Voltage	250Vac±7V			
High Loss Return Voltage	240Vac±7V			
Max AC Input Voltage	250Va			
Nominal Input Frequency	50Hz / 60Hz (Auto detection)			
Low Loss Frequency	40±1Hz			
Low Loss Return Frequency	42±1Hz			
High Loss Frequency	65±1Hz			
High Loss Return Frequency	63±1Hz			
Output Short Circuit Protection	Fuse Open	Fuse Open	Fuse Open	Circuit Breaker
Efficiency (Line Mod)	>95% ( Rated R load, battery full charged)			
Transfer Time	10ms typical (UPS);		20ms typical (Appliances)	
<b>INVERTER MODE SPECIFICATIONS</b>				
Rated Output Power	1800W	3500W	6200W	8200W
Output Voltage Waveform	Pure Sine Wave			
Output Voltage Regulation	230Vac±5%			
Output Frequency	50Hz			
Peak Efficiency	>89%	>92%	>94%	
Overload Protection	5s@≥150%;		10s@≥110%;	2min@≥100%
Surge Capacity	2* rated power for 5 seconds			
Nominal DC Input Voltage	12.0Vdc	24.0Vdc	48.0Vdc	
Cold Start Voltage	11.5Vdc	23.0Vdc	46.0Vdc	
Low DC Warning Voltage @ load < 50% @ load > 50%	11.0Vdc 10.5Vdc	22.0Vdc 21.0Vdc	44.0Vdc 42.0Vdc	
Low DC Warning Return Voltage @ load < 50% @ load > 50%	11.3Vdc 11.0Vdc	22.5Vdc 22.0Vdc	45.0Vdc 44.0Vdc	
Low DC Cut-off Voltage @ load < 50% @ load > 50%	10.3Vdc 10.0Vdc	20.5Vdc 20.0Vdc	41.0Vdc 40.0Vdc	
High DC Recovery Voltage	16Vdc	32Vdc	62Vdc	
High DC Cut-off Voltage	17Vdc	33Vdc	63Vdc	
No Load Power Consumption	32W	45W	45W	49W
<b>CHARGE MODE SPECIFICATIONS</b>				
Charging Algorithm	3-Step			
AC Charging Current (Max)	100Amp (@V <sub>IP</sub> =230Vac)	80Amp (@V <sub>IP</sub> =230Vac)	100Amp (@V <sub>IP</sub> =230Vac)	120Amp (@V <sub>IP</sub> =230Vac)
Bulk Charging Voltage	Flooded Battery	14.7	29.2	58.4
	AGM/ Gel Battery	14.1	28.2	56.4

# Lithium Iron Phosphate Battery

**GF800-512-300 SERIES (51.2V/300AH)**



Expansion Flexibility



Safe & Reliable



Long Lifespan



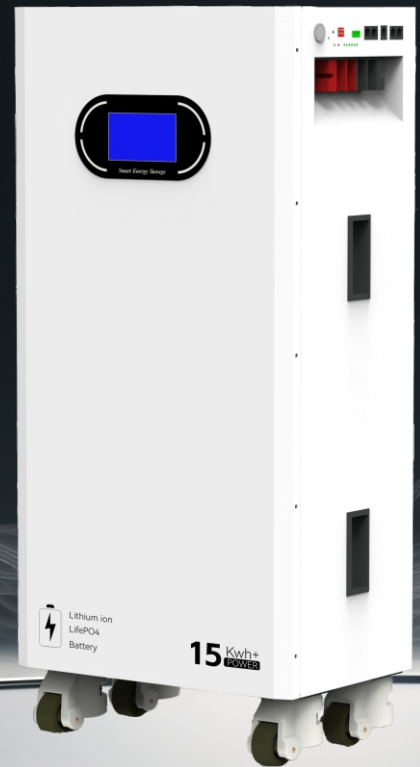
Easy Installation



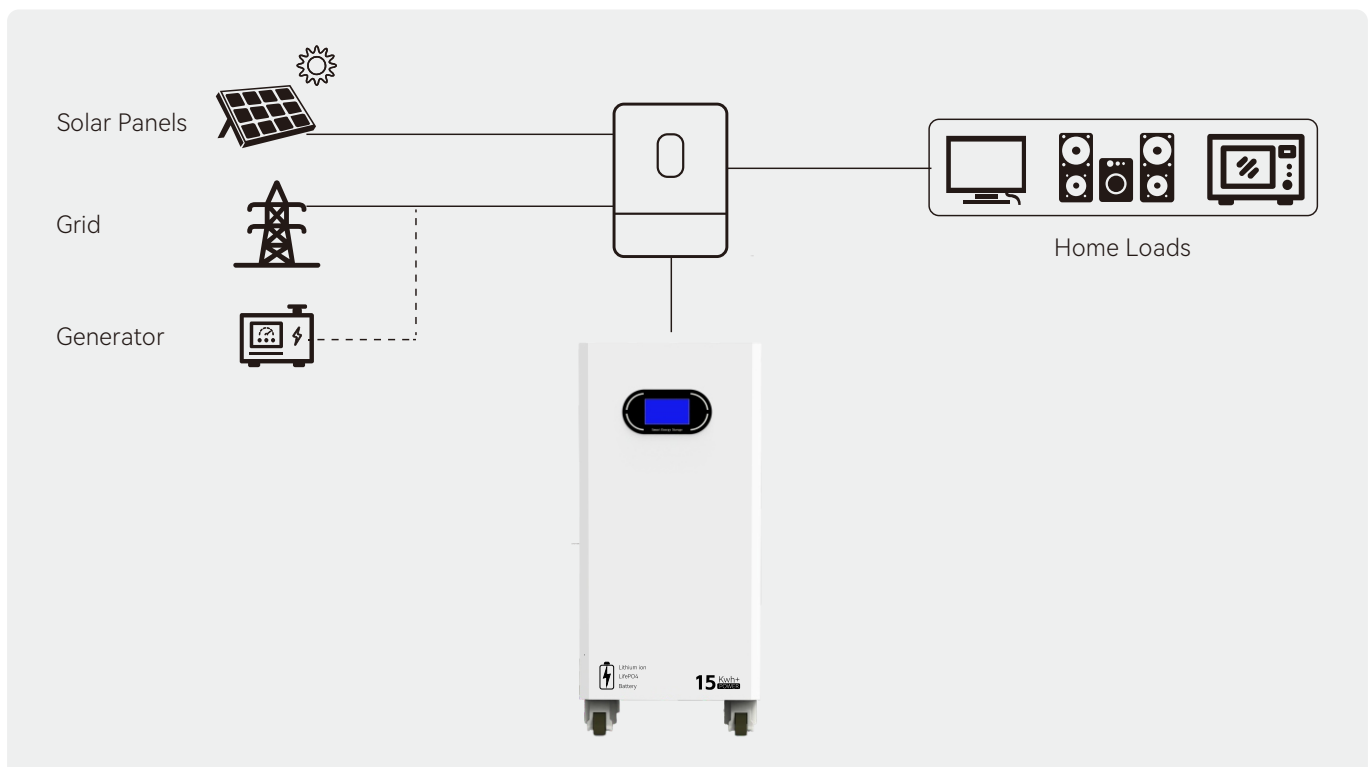
Environment Adaptability



Compatibility



## TYPICAL APPLICATION SCENARIOS



## TECHNICAL SPECIFICATION

Type	Specifications
Model	GF800-512-300
Rated voltage	51.2V
Rated capacity	300Ah
Energy	15.36KWh
Charging cut-off voltage	57.6V
Discharge cut-off voltage	43.2V
Internal resistance	≤20mΩ
Maximum charging current	200A
Maximum discharge current	200A
Cycle life	3000 times (80%DOD)
Working temperature range	Charge 0~45°C
	Discharge -20~60°C
Storage temperature range	-40~45°C
Storage of electric charge	SOC 30%~50%
Self-discharge	≤2%/Month
Communication	RS485/CAN
Bluetooth function	Yes (Optional)
Waterproof rating	IP21
Overall dimensions	L850*W390*H254±2mm
Net weight	124kg
Certification	CE/UN38.3/MSDS
Installation method	Floor-Standing



# Lithium Iron Phosphate Battery

**GF800-512-200 SERIES (51.2V/200AH)**



Expansion Flexibility



Safe & Reliable



Long Lifespan



Easy Installation



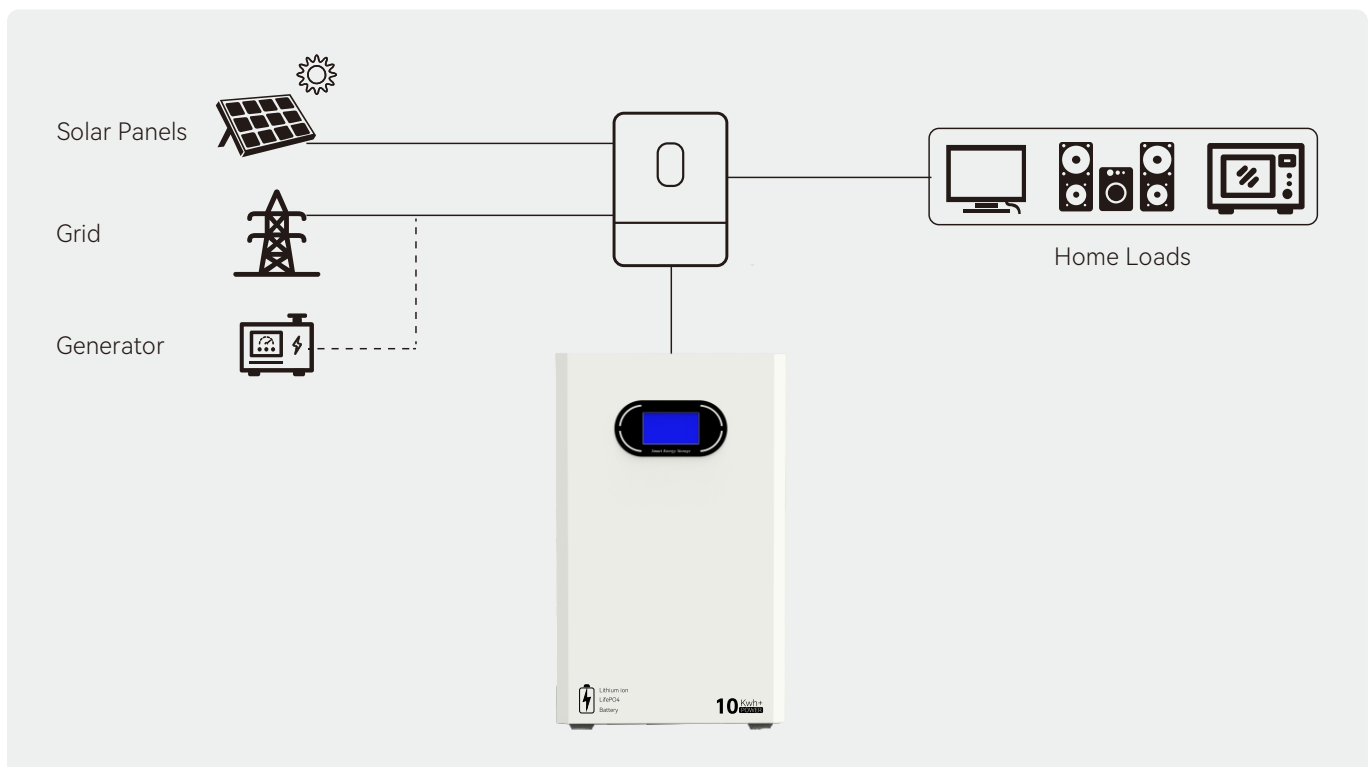
Environment  
Adaptability



Compatibility



## TYPICAL APPLICATION SCENARIOS



## TECHNICAL SPECIFICATION

Type	Specifications
Model	GF800-512-200
Rated voltage	51.2V
Rated capacity	200Ah
Energy	10.24KWh
Charging cut-off voltage	57.6V
Discharge cut-off voltage	43.2V
Internal resistance	≤20mΩ
Maximum charging current	200A
Maximum discharge current	200A
Cycle life	3000 times (80%DOD)
Working temperature range	Charge 0~45°C
	Discharge -20~60°C
Storage temperature range	-40~45°C
Storage of electric charge	SOC 30%~50%
Self-discharge	≤2%/Month
Communication	RS485/CAN
Bluetooth function	Yes (Optional)
Waterproof rating	IP21
Overall dimensions	L644*W390*H263±2mm
Net weight	87kg
Certification	CE/UN38.3/MSDS
Installation method	Wall-mounted/Floor-Standing



# Lithium Iron Phosphate Battery

**GF800-256-300 SERIES (25.6V/300AH)**

**GF800-256-200 SERIES (25.6V/200AH)**



Expansion Flexibility



Safe & Reliable



Long Lifespan



Easy Installation



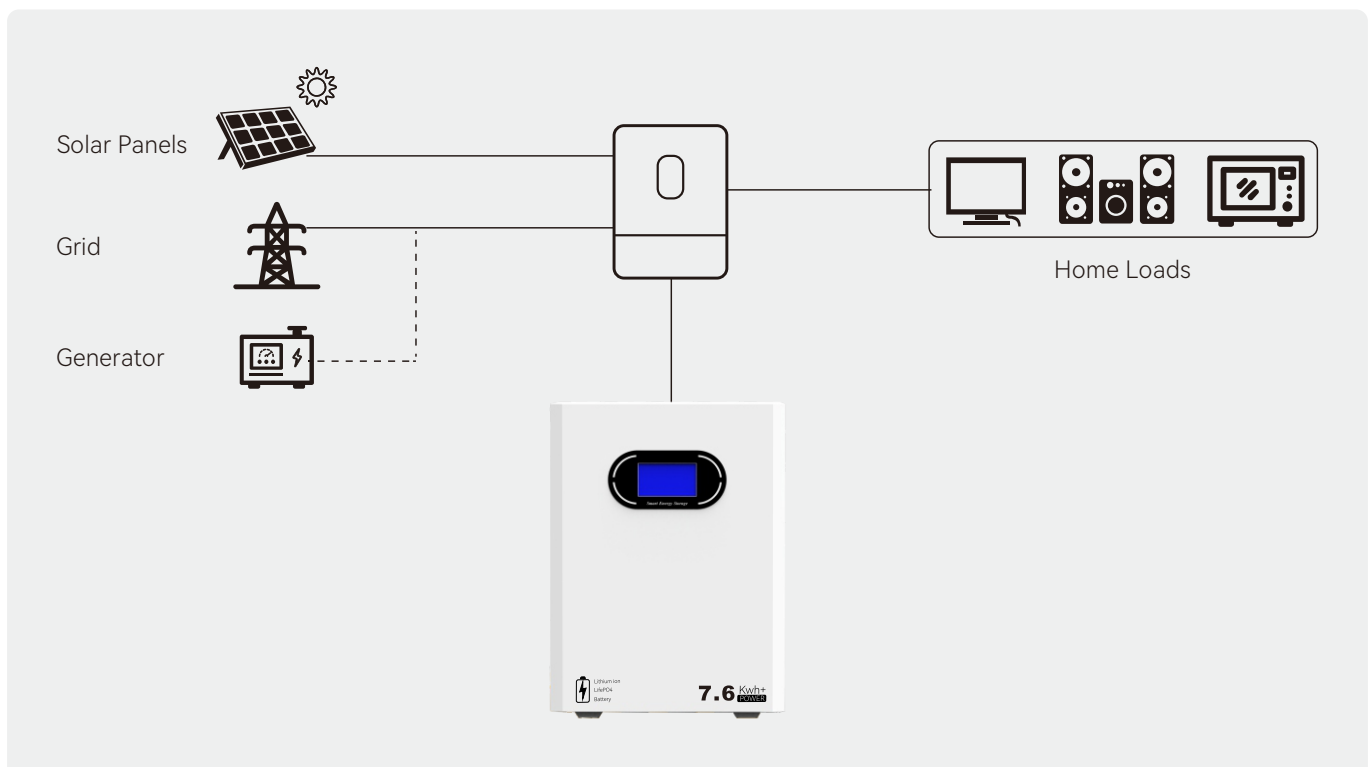
Environment Adaptability



Compatibility



## TYPICAL APPLICATION SCENARIOS



## TECHNICAL SPECIFICATION

Type	Specifications	
Model	GF800-256-200	GF800-256-300
Rated voltage	25.6V	
Rated capacity	200Ah	300Ah
Energy	5.62KWh	7.68KWh
Charging cut-off voltage	28.8V	
Discharge cut-off voltage	21.6V	
Internal resistance	≤20mΩ	
Maximum charging current	200A	
Maximum discharge current	200A	
Cycle life	3000 times (80%DOD)	
Working temperature range	Charge 0~45°C	
	Discharge -20~60°C	
Storage temperature range	-40~45°C	
Storage of electric charge	SOC 30%~50%	
Self-discharge	≤2%/Month	
Communication	RS485/CAN	
Bluetooth function	Yes (Optional)	
Waterproof rating	IP21	
Overall dimensions	L488*W390*H263±2mm	
Net weight	47kg	58kg
Certification	CE/UN38.3/MSDS	
Installation method	Wall-mounted/Floor-Standing	



# Lithium Iron Phosphate Battery

**GF800-256-100 SERIES (25.6V/100AH)**

**GF800-512-100 SERIES (51.2V/100AH)**



Expansion Flexibility



Safe & Reliable



Long Lifespan



Easy Installation



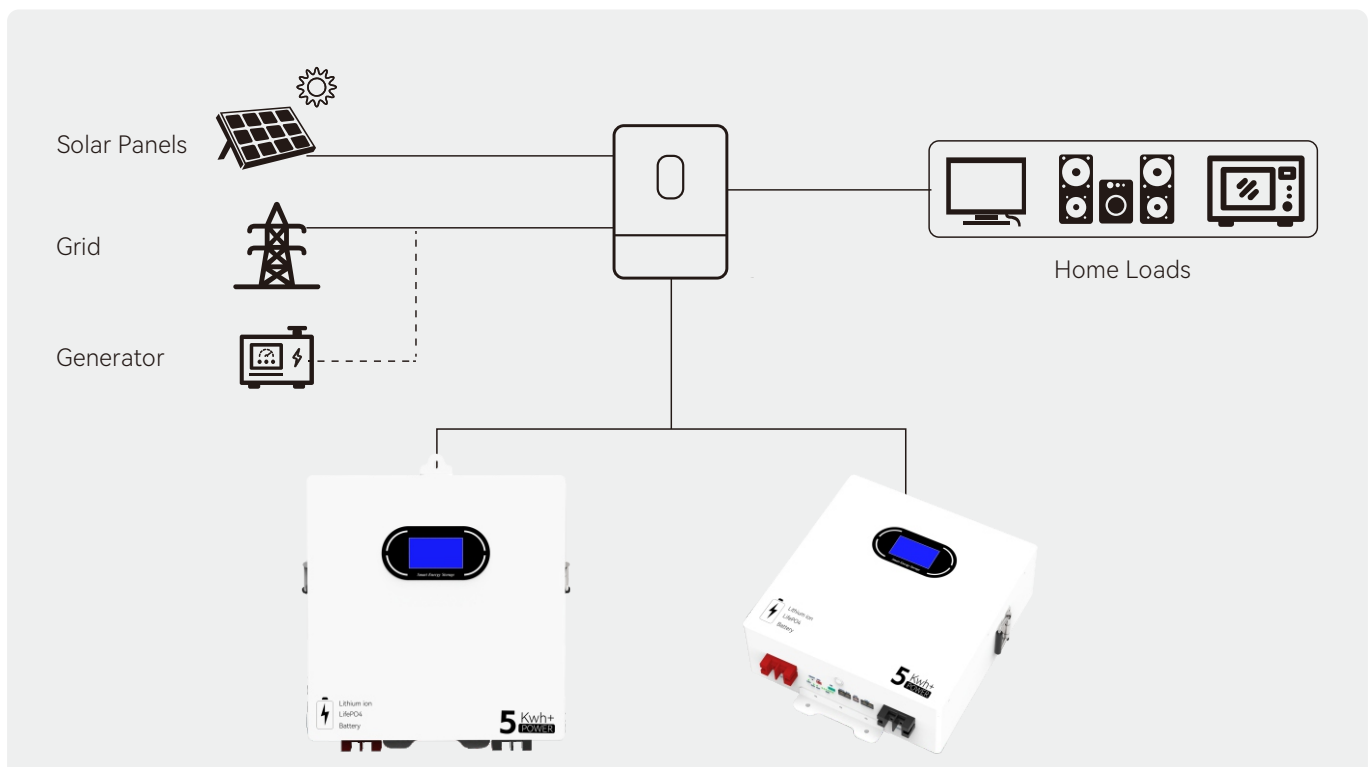
Environment  
Adaptability



Compatibility



## TYPICAL APPLICATION SCENARIOS



## TECHNICAL SPECIFICATION

Type	Specifications	
Model	GF800-256-100	GF800-512-100
Rated voltage	25.6V	51.2V
Rated capacity	100Ah	100Ah
Energy	2.56KWh	5.12KWh
Charging cut-off voltage	28.8V	57.6V
Discharge cut-off voltage	21.6V	43.2V
Internal resistance	≤20mΩ	
Maximum charging current	200A	
Maximum discharge current	200A	
Cycle life	3000 times (80%DOD)	
Working temperature range	Charge 0~45°C	
	Discharge -20~60°C	
Storage temperature range	-40~45°C	
Storage of electric charge	SOC 30%~50%	
Self-discharge	≤2%/Month	
Communication	RS485/CAN	
Bluetooth function	Yes (Optional)	
Waterproof rating	IP21	
Overall dimensions	L339*W455*H197±2mm	L450*W455*H197±2mm
Net weight	20kg	45kg
Certification	CE/UN38.3/MSDS	
Installation method	Wall-mounted	



# Lithium Iron Phosphate Battery

**12V/100AH**

**12V/200AH**

**12V/300AH**



Expansion Flexibility



Safe & Reliable



Long Lifespan



Easy Installation



Environment  
Adaptability



Compatibility



## FEATURES & BENEFITS



### **High cycle life**

>4000 cycles @80% DoD for effectively lower total cost of ownership.



### **Longer service life**

Low maintenance batteries with stable chemistry.



### **Built in circuit protection**

Battery Management System (BMS) is incorporated against abuse.



### **Better storage**

up to 6 months thanks to its extremely low self discharge(LSD) rate and no risk of sulphation.



### **Quickly recharge**

Save time and increase productivity with less down time thanks to superior charge/discharge efficiency.



### **Extreme heat tolerance**

Suitable for use in a wider range of applications where ambient temperature is unusually high: up to +60°C.






### **Light weight**

Lithium batteries provide more Wh/Kg while also being up to 1/3 the weight of its SLA equivalent.

## REMARK

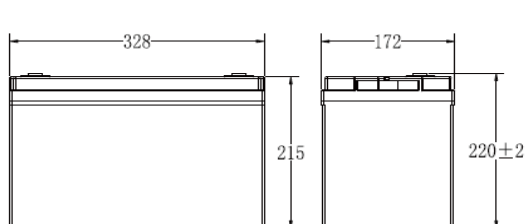
Performance may vary depending on application. All specifications are subject to change without prior notice to the user. This data is for evaluation purposes only. No guarantee is intended or implied by this data.

## TECHNICAL SPECIFICATION

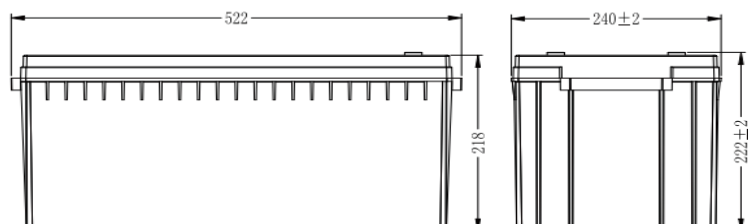
Type	Specifications		
	12V/100Ah	12V/200Ah	12V/300Ah
Appearance			
<b>AC ELECTRICAL PERFORMANCE</b>			
Nominal Voltage	12.8V		
Nominal Capacity	100Ah	200Ah	300Ah
Capacity	@20A/300min	@40A/300min	@60A/300min
Energy	1280Wh	2560Wh	3840Wh
Resistance	≤20mΩ @ 100% SOC		
Self Discharge	<3%/Month		
Cells	Prismatic		
<b>CHARGE PERFORMANCE</b>			
Recommended Charge Current	20A	40A	60A
Maximum Charge Current	50A	100A	150A
Recommended Charge Voltage	14.4V		
BMS Charge Cut-Off Voltage	<14.8V (3.7V/Cell)		
Reconnect Voltage	>14.2V(3.55V/Cell)		
Balancing Voltage	<14.2V (3.55V/Cell)		
Maximum Batteries in Series	4		
<b>DISCHARGE PERFORMANCE</b>			
Maximum Continuous Discharge Current	100A	100A	300A
Peak Discharge Current	300A	200A(3s)	600A(3s)
BMS Discharge Cut-Off Current	300A±10A	1000A(300mS)	1240A(300mS)
Recommended Low Voltage	10.8V (2.7V/Cell)		
BMS Discharge Cut-Off Voltage	>9.2V (1S) (2.3V/Cell)		
Reconnect Voltage (by charging)	>11.2V(2.8V/Cell)		
Short Circuit Protection	250 ~ 500μs		
<b>MECHANICAL PERFORMANCE</b>			
Approx. Weight	Approx. 11kg	Approx. 22kg	Approx. 28kg
Terminal Type	M8		
Case Material	ABS		
Enclosure Protection	IP65		
<b>TEMPERATURE PERFORMANCE</b>			
Discharge Temperature	-4~140°F(-20~60°C)		
Charge Temperature	32~113°F(0~45°C)		
Storage Temperature	23~95°F(-5~35°C)		
BMS High Temperature Cut-Off	149°F(65°C)		
Reconnect Temperature	131°F(55°C)		

## TECHNICAL SPECIFICATION

Type	Specifications		
	12V/100Ah	12V/200Ah	12V/300Ah
<b>COMPLIANCE</b>			
Certification	CE (battery) / UN38.3 (battery) / UL1642 & IEC62133 (cells)		
Shipping Classification	UN3480, CLASS9		
Size chart (L×W×H)	330×172×215	522×240×218	522×240×218



12V/100Ah Dimension drawing



12V/200Ah, 12V/300Ah Dimension drawing

## APPLICATIONS

Lithium Iron Phosphate can be used in most applications that use Lead Acid, GEL or AGM type batteries.

Suitable applications include:

- Marine**
- Golf car**
- Remote Monitoring**
- Caravan**
- Buggies. Solar Storage**
- Switching applications and more**

## CAUTIONS

- Do NOT short circuit, reverse polarity, crush or disassemble.
- Do NOT heat or incinerate.
- Do NOT immerse in any liquid.
- Store at 30~50% SOC. Recharging every 3 months is recommended. The storage area should be clean, cool, dry and ventilated.





## Data Sheet

MODEL	YV1600-EU	YV2000-EU	YV2250-EU
<b>(DC)/Input Data (DC)</b>			
Recommended solar panel input power	275-530W×4	275-530W×4	275-630W×4
Number of DC input connections		MC4 ×4	
Max. input voltage		60V	
Max input short-circuit current		25A*4	
PV Operating voltage		16-60V	
Start-up voltage		22V	
MPPT tracking range		22-55V	
MPPT tracking accuracy		>99.5%	
Max. continuous input current	14A*4	16A*4	18A*4
<b>(AC)/Output Data (AC)</b>			
Max. continuous output power	1600W	2000W	2250W
Nominal output voltage		230V	
Operating voltage range		190-270V	
Max. continuous output current	6.95A	8.69A	9.78A
Nominal output frequency		50Hz/60Hz	
Output frequency range		47.5-51.5Hz/57.5-62.5Hz	
THD		<5%	
Power factor		>0.99	
Peak efficiency		96%	
Protective class		Class I	
<b>Protection Function</b>			
Operating ambient temp.		-40°C to +65°C	
Indication light quantity		Working status: Led lightt	
Communication connection mode		Wi-Fi / 2.4G	
Cooling method		Natural cooling(no fan)	
Working environment		Indoor and Outdoor	
Weight		5.2 kg	
Size (L*W*H)mm		342mm*225.4mm*50mm	



## Data Sheet

**MODEL** YV800-PRO

### (DC)/Input Data (DC)

Recommended solar panel input power	200-430W× 2
Number of DC input connections	MC4 ×2
Max. input voltage	60V
Max input short-circuit current	20A*2
PV Operating voltage	16-60V
Start-up voltage	22V
MPPT tracking range	22-55V
MPPT tracking accuracy	>99.5%
Max. continuous input current	14A*2

### (AC)/Output Data (AC)

Max. continuous output power	800W
Nominal output voltage	230V
Operating voltage range	190-270V
Max. continuous output current	3.47A
Nominal output frequency	50Hz/60Hz
Output frequency range	47.5-51.5Hz/57.5-62.5Hz
THD	<5%
Power factor	>0.99
Peak efficiency	96%
Protective class	Class I

### Protection Function

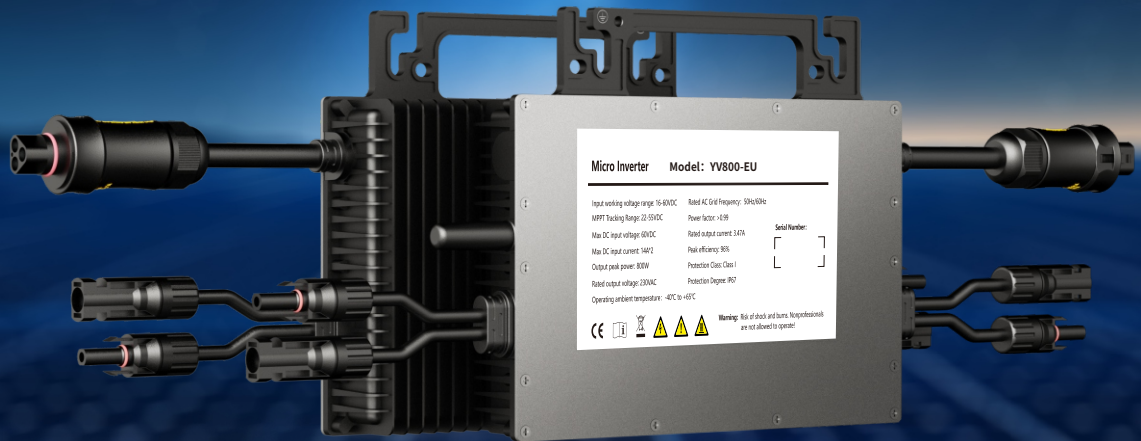
Operating ambient temp.	-40°C to +65°C
Indication light quantity	Working status: Led lightt
Communication connection mode	Wi-Fi / 2.4G
Cooling method	Natural cooling(no fan)
Working environment	Indoor and Outdoor
Weight	1.9kg
Size (L*W*H)mm	181mm*193mm*38.5mm

# YV Series Micro inverter

**YV800-EU**

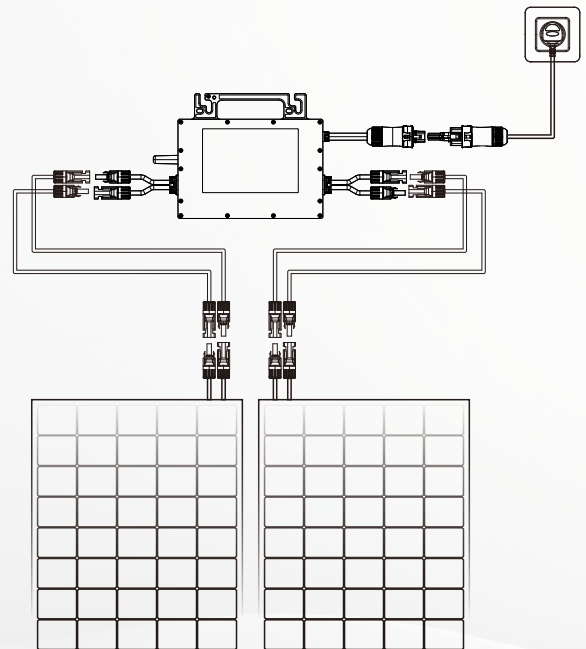
**YV1000-EU**

**YV1200-EU**



## FEATURES

- Plug-and-Play Made Effortless
- Single unit connects to 2 PV panel
- IP67 protection degree
- VDE:VDE-AR-N 4105 CE-LVD:EN62109-1/2 CE-EMC:EN61000-6-2/4 EN61000-3-2/3 Rohs:IEC62321
- MPPT for maximum power generation and efficiency
- WIFI remote monitoring
- Multiple protection functions
- Suitable for crystalline silicon and thin film PV panel



**YV-800/1000/1200 EU wiring diagram**

## Data Sheet

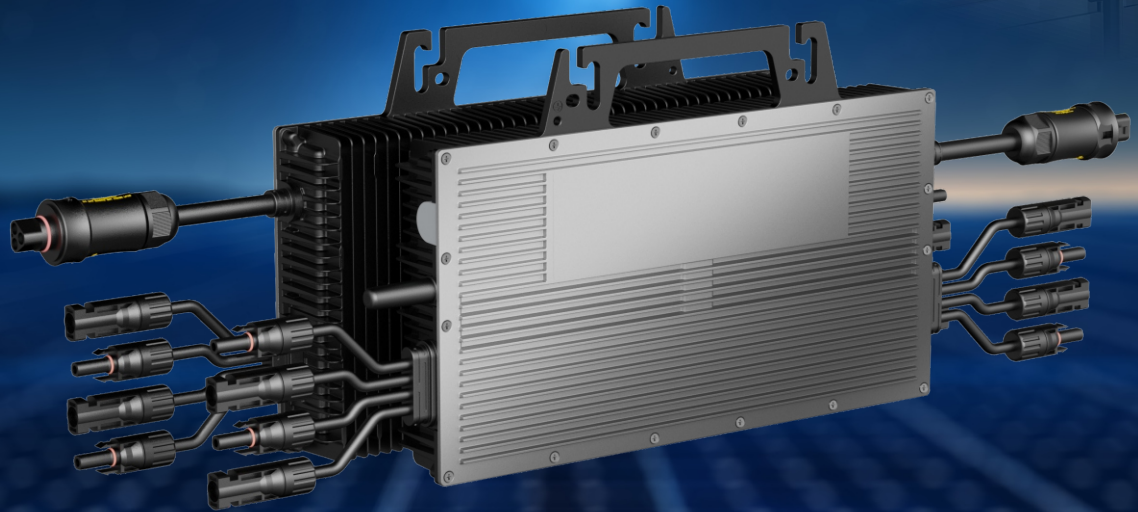
MODEL	YV800-EU	YV1000-EU	YV1200-EU
<b>(DC)/Input Data (DC)</b>			
Recommended solar panel input power	200-430W× 2	200-530W× 2	200-625W× 2
Number of DC input connections	MC4 ×2		
Max. input voltage	60V		
Max input short-circuit current	20A*2		
PV Operating voltage	16-60V		
Start-up voltage	22V		
MPPT tracking range	22-55V		
MPPT tracking accuracy	>99.5%		
Max. continuous input current	14A*2	16A*2	18A*2
<b>(AC)/Output Data (AC)</b>			
Max. continuous output power	800W	1000W	1200W
Nominal output voltage	230V		
Operating voltage range	190-270V		
Max. continuous output current	3.47A	4.34A	5.21A
Nominal output frequency	50Hz/60Hz		
Output frequency range	47.5-51.5Hz/57.5-62.5Hz		
THD	<5%		
Power factor	>0.99		
Peak efficiency	96%		
Protective class	Class I		
<b>Protection Function</b>			
Operating ambient temp.	-40°C to +65°C		
Indication light quantity	Working status: Led lightt		
Communication connection mode	Wi-Fi / 2.4G		
Cooling method	Natural cooling(no fan)		
Working environment	Indoor and Outdoor		
Weight	2.52 kg		
Size (L*W*H)mm	227mm*195.5mm*42mm		

# YV Series Micro inverter

**YV1600-EU**

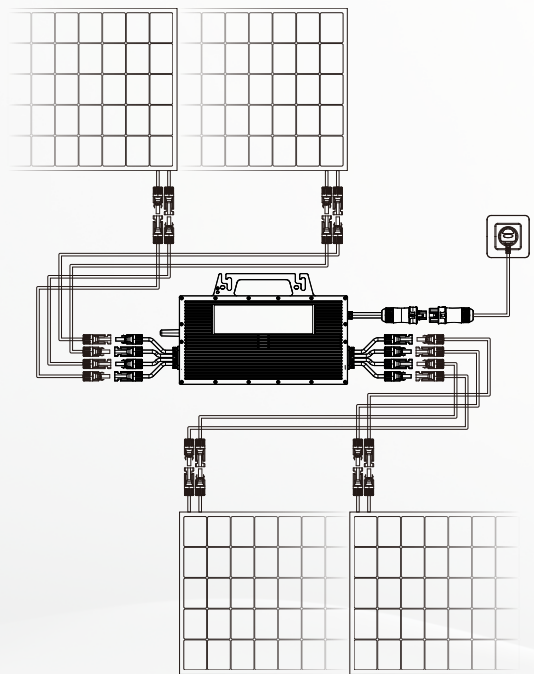
**YV2000-EU**

**YV2250-EU**



## FEATURES

- Plug-and-Play Made Effortless
- Single unit connects to 4 PV panel
- IP67 protection degree
- EN62109-1, EN62109-2 EN61000-6-2/4 EN61000-3-2/3  
EN62920 Ordinance NO.140 Rohs: IEC62321
- MPPT for maximum power generation and efficiency
- WIFI remote monitoring
- Multiple protection functions
- Suitable for crystalline silicon and thin film PV panel



**YV-1600/2000/2250 EU wiring diagram**

## Data Sheet

MODEL	YV1600-EU	YV2000-EU	YV2250-EU
-------	-----------	-----------	-----------

### (DC)/Input Data (DC)

Recommended solar panel input power	275-530W×4	275-530W×4	275-630W×4
Number of DC input connections	MC4 ×4		
Max. input voltage	60V		
Max input short-circuit current	25A*4		
PV Operating voltage	16-60V		
Start-up voltage	22V		
MPPT tracking range	22-55V		
MPPT tracking accuracy	>99.5%		
Max. continuous input current	14A*4	16A*4	18A*4

### (AC)/Output Data (AC)

Max. continuous output power	1600W	2000W	2250W
Nominal output voltage	230V		
Operating voltage range	190-270V		
Max. continuous output current	6.95A	8.69A	9.78A
Nominal output frequency	50Hz/60Hz		
Output frequency range	47.5-51.5Hz/57.5-62.5Hz		
THD	<5%		
Power factor	>0.99		
Peak efficiency	96%		
Protective class	Class I		

### Protection Function

Operating ambient temp.	-40°C to +65°C
Indication light quantity	Working status: Led lightt
Communication connection mode	Wi-Fi / 2.4G
Cooling method	Natural cooling(no fan)
Working environment	Indoor and Outdoor
Weight	5.2 kg
Size (L*W*H)mm	342mm*225.4mm*50mm



PC



TV



Electric fan



FM Radio



Solar Power

YUANXIN 2021年01月21日 星期三 11:18:11

## MUFLAH INTERNATIONAL TECHNICAL SUPPLY

📍 Add: Bhiwandi, Thane, Maharashtra, India - 421302

☎ Hotline: +9189834 73753

✉ E-mail: [info@mitsltd.com](mailto:info@mitsltd.com)

🌐 <https://mitsltd.com>