

The Mainline Home Series



SHELTER
HOME SYSTEMS

WHY SHELTER?

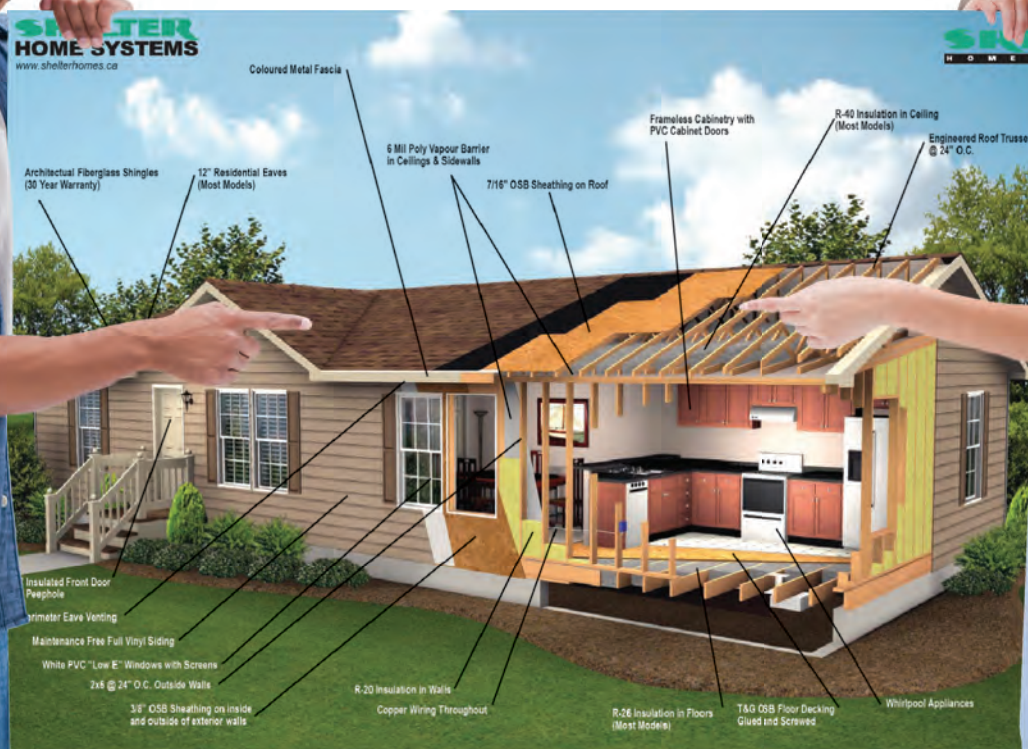
Shelter Home Systems has been supplying affordable and quality built homes to Canadian families for over 40 years.

CHOICES

The Mainline Home series offers so many floor plans to choose from and that is just the beginning. From there you have a multitude of decor options to make your new home your very own.

QUALITY & AFFORDABILITY

A Mainline home is affordable, yet quality built. There are also many optional features that you can add for that special look. Additionally, every Shelter home is covered by a 10 year warranty supplied by Progressive Home Warranty.



MODEL SPECIFICATIONS

STANDARD CONSTRUCTION

- ⇒ 30 Year Architectural Fiberglass Shingles
- ⇒ Engineered Roof Trusses
- ⇒ 12" Residential Eaves on 3 Sides (*4 Sides on Sectionals & RTM*)
- ⇒ 6 MIL Poly Vapour Barrier in Ceiling & Sidewalls
- ⇒ White Soffit and White Metal Fascia
- ⇒ Cathedral Ceiling in Kitchen, Dining Room and Living Room
- ⇒ 2x6 @ 24" o.c. outside 8' Walls
- ⇒ 3/8" OSB Sheathing on Inside and Outside of Exterior Walls
- ⇒ Low Maintenance Vinyl Siding
- ⇒ Tubular Laminated Steel Frame: 8" (<16'x68') or 12" (>16'x68')
- ⇒ 2x10 Floor Joists (16' wide), 16" o.c.
- ⇒ I-Joist Floor (20' & 22' wide), 16" o.c.
- ⇒ 14" Engineered Open Web Floor (24' RTM), 16" o.c.
- ⇒ Tongue and Groove OSB Floor Decking; Glued and Mechanically Fastened
- ⇒ Insulation: R-40 Ceiling, R-22 Wall, R48 Floor
- ⇒ Weatherproof Exterior GFI Receptacle
- ⇒ Frost Free Tap c/w Check Valve
- ⇒ Coach Lights at all Exterior Doors
- ⇒ Airtight Protocols
- ⇒ Hangered floor on a single LVL rim joist; Double LVL if going on perimeter piles (*RTM Models only*)
- ⇒ 36" Insulated No Light Front Door c/w Peephole
- ⇒ 32" Insulated No Light Rear Door c/w Peephole
- ⇒ White PVC "Low E" Windows with screens; 70x52 in Living Room, 46x42 in Bedrooms and 46x52 in Dining Area

KITCHEN

- ⇒ 18 Cu. Ft. White Fridge with 2 doors & Top Freezer
- ⇒ 30" Electric White Range
- ⇒ Two Speed White Range Hood Vented to Exterior
- ⇒ White Dishwasher
- ⇒ Double Stainless Steel Sink with Single Lever Faucet

BATH

- ⇒ One Piece Fiberglass Tub/Shower (*all bathrooms*)
- ⇒ White Oval Drop-in Sink with Single Lever Chrome Faucet
- ⇒ Single Flush White Toilet with Lined Tank
- ⇒ Shower Rod and Curtain Liner (*all bathrooms*)
- ⇒ Chrome Towel Bar and Paper Holder
- ⇒ GFI Receptacles
- ⇒ Dehumidistat on Main Bath Fan

UTILITIES

- ⇒ 40 GI Electric Water Heater
- ⇒ Electric Furnace
- ⇒ 200 Amp Electric Service Panel
- ⇒ Electric Conduit Through Floor
- ⇒ Incandescent Light Bulb Package
- ⇒ Programmable Thermostat
- ⇒ Copper Wiring Throughout
- ⇒ Plumbed and Wired for Side by Side Washer and Dryer
- ⇒ Shut Off Valves on all Fixtures
- ⇒ Insulated Water Lines in Water Heater Cavity
- ⇒ Smoke/CO Alarms w/Battery Back Up in Hallways
- ⇒ Smoke Alarms (*all bedrooms*)

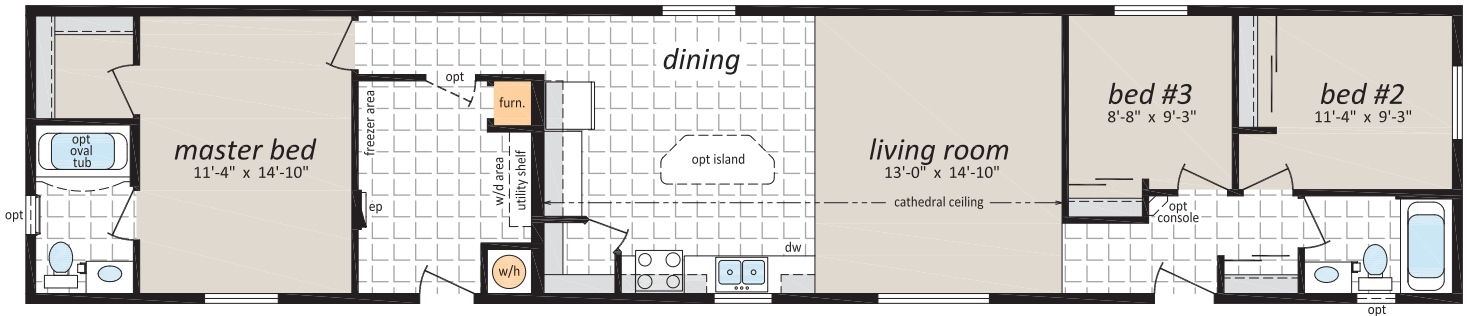
INTERIOR FINISH

- ⇒ Spraytex 1/2" Gyproc Ceilings
- ⇒ 100% Polyurethane Carpet in Living Room & Bedrooms
- ⇒ No Wax Vinyl Flooring Elsewhere
- ⇒ Wall Finish: Decorative Vinyl Over Gyproc (VOG) w/ Battens on Joints
- ⇒ Ceiling Trim: 1011 Profile
- ⇒ Baseboards: 1011 Profile
- ⇒ Window/Door Trim: 1011 Profile
- ⇒ Closets: Battens Throughout
- ⇒ Pewter Interior Door Hardware Throughout with Lever Handles
- ⇒ Pre-finished White Embossed Interior Doors
- ⇒ Wire Closet Shelving
- ⇒ 2" Vinyl Blinds Throughout
- ⇒ Toggle Light Switches
- ⇒ Modular Cabinets w/ Roller Drawer Hardware
- ⇒ PVC Wrap Cabinet Doors w/Pewter Euro Style Handles
- ⇒ Cabinet Crown Moulding: 510 Profile
- ⇒ 3" White Subway Kitchen Tile Backsplash (*White Grout*)
- ⇒ Laminated Countertop
- ⇒ Utility Cabinets above Washer and Dryer
- ⇒ One Bank of Drawers



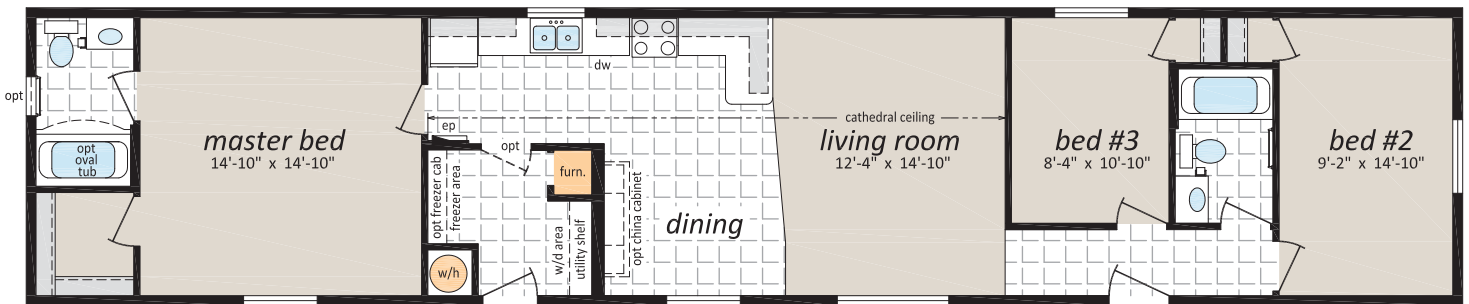
ML-161

16' x 76' - 1,216 sq. ft.
3 Beds, 2 Baths



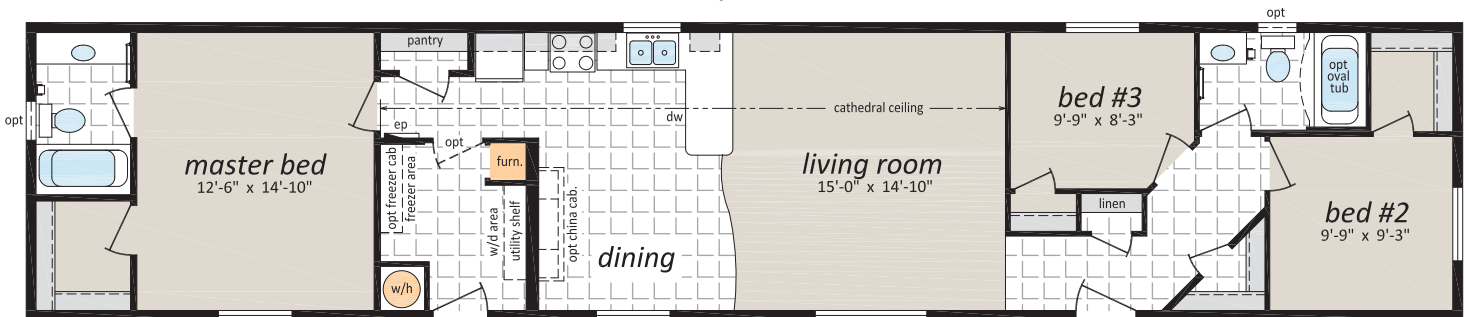
ML-162

16' x 76' - 1,216 sq. ft.
3 Beds, 2 Baths



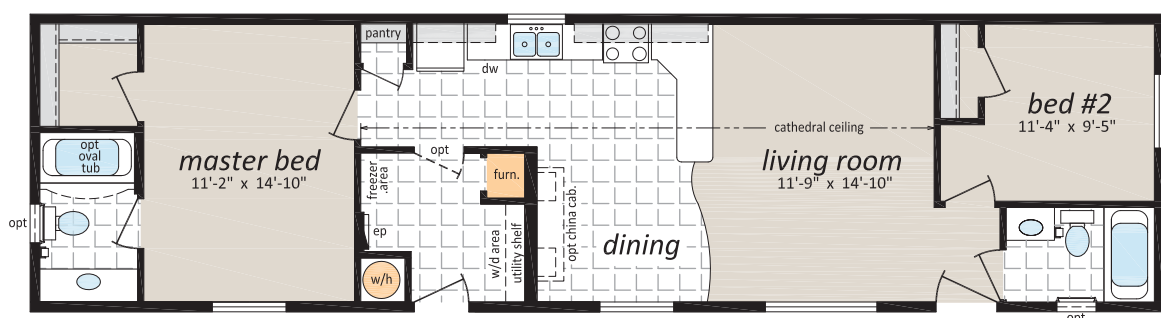
ML-163

16' x 76' - 1,216 sq. ft.
3 Beds, 2 Baths



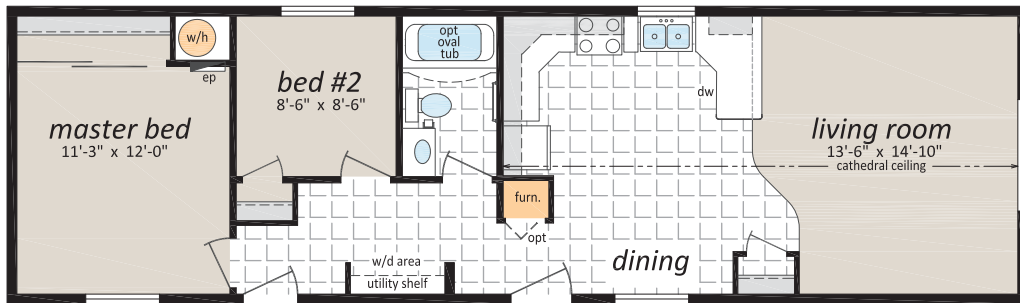
ML-164

16' x 60' - 960 sq. ft.
2 Beds, 2 Baths



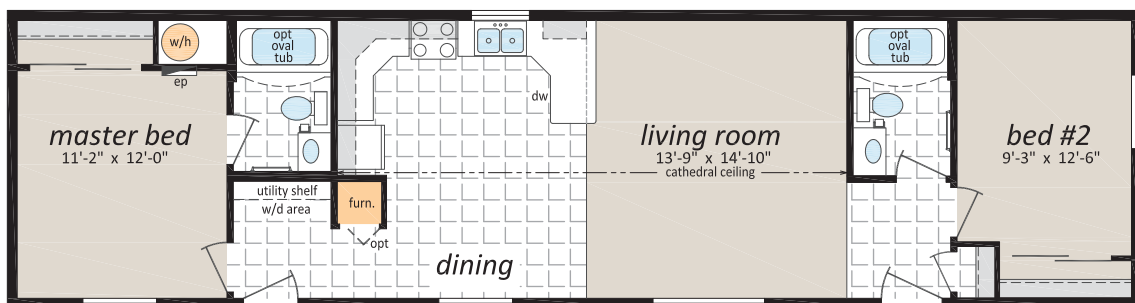
ML-165

16' x 54' - 864 sq. ft.
2 Beds, 1 Bath



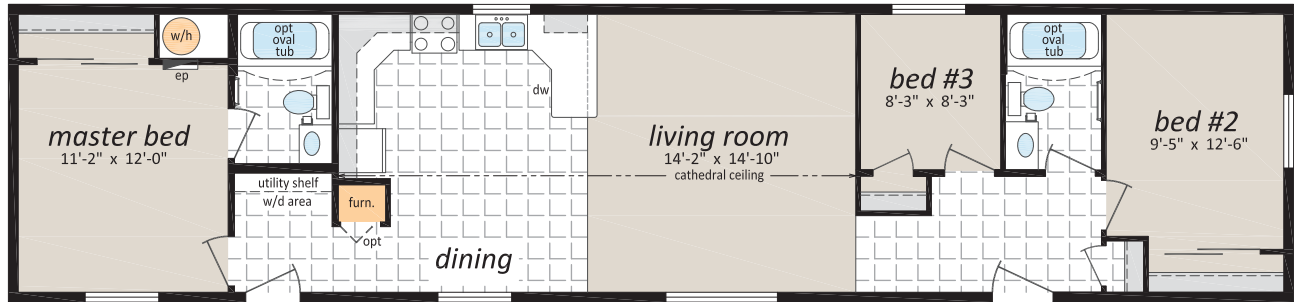
ML-166

16' x 60' - 960 sq. ft.
2 Beds, 2 Baths



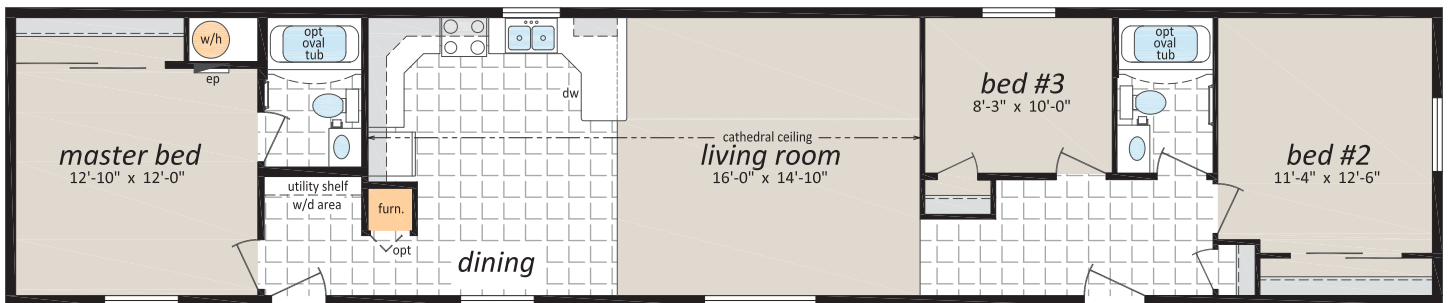
ML-167

16' x 68' - 1,088 sq. ft.
3 Beds, 2 Baths



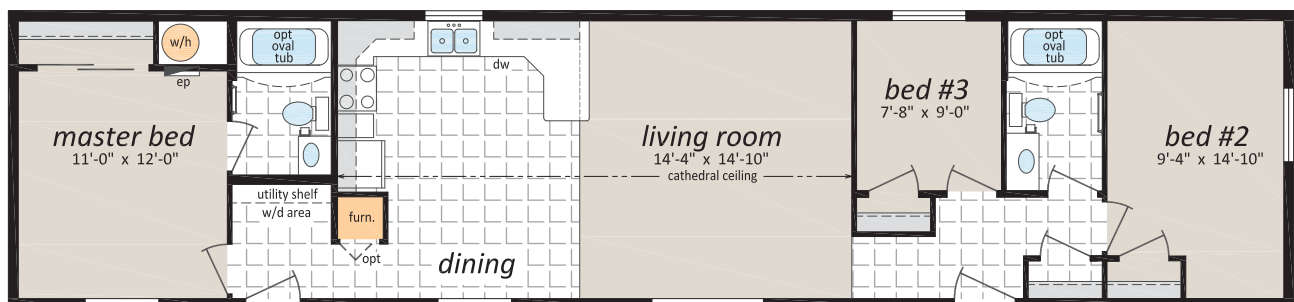
ML-168

16' x 76' - 1,216 sq. ft.
3 Beds, 2 Baths



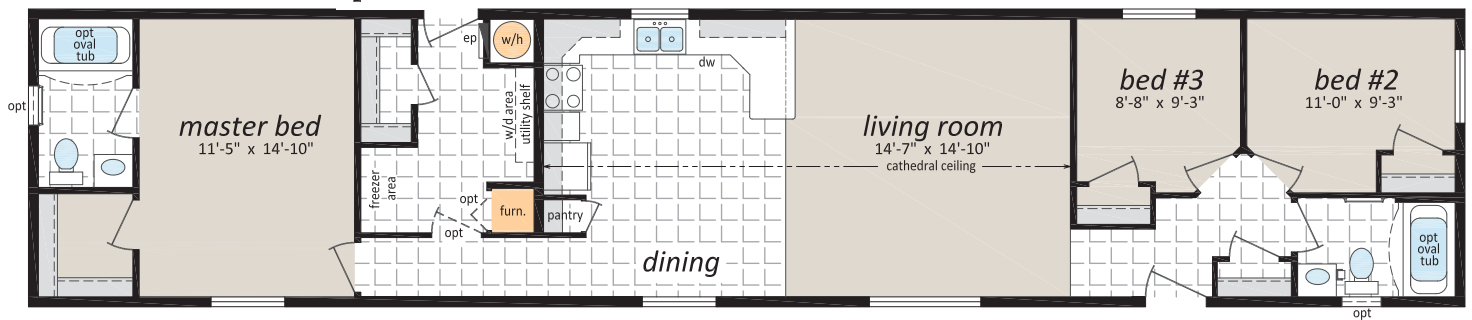
ML-169

16' x 68' - 1,088 sq. ft.
3 Beds, 2 Baths



ML-170

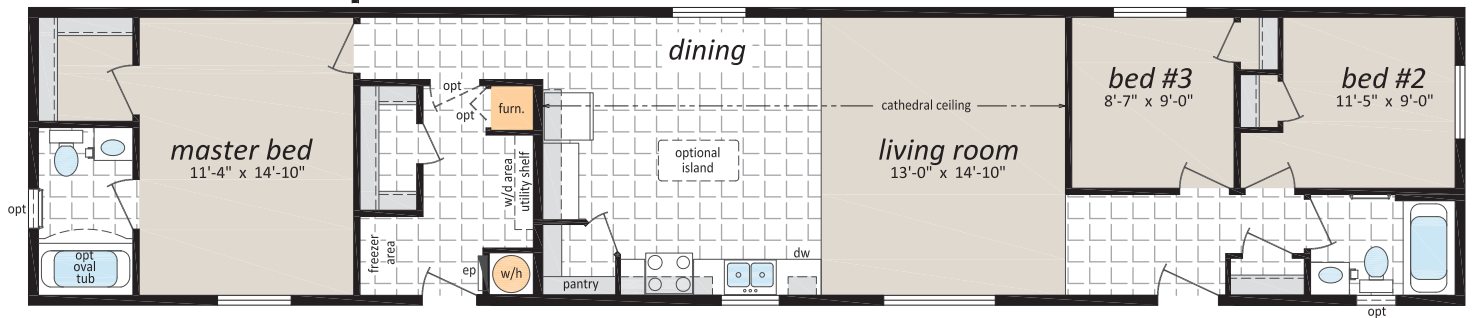
16' x 76' - 1,216 sq. ft.
3 Beds, 2 Baths



ML-171

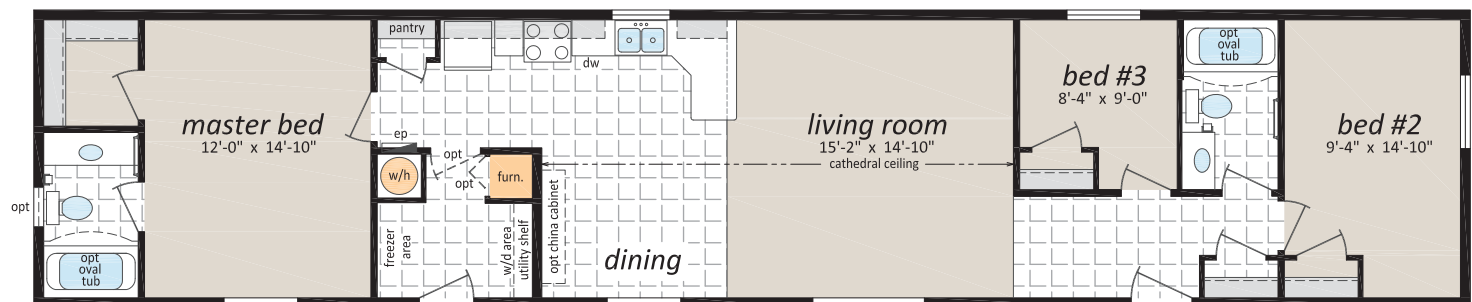
16' x 76' - 1,216 sq. ft.
3 Beds, 2 Baths

Optional
Half Bath



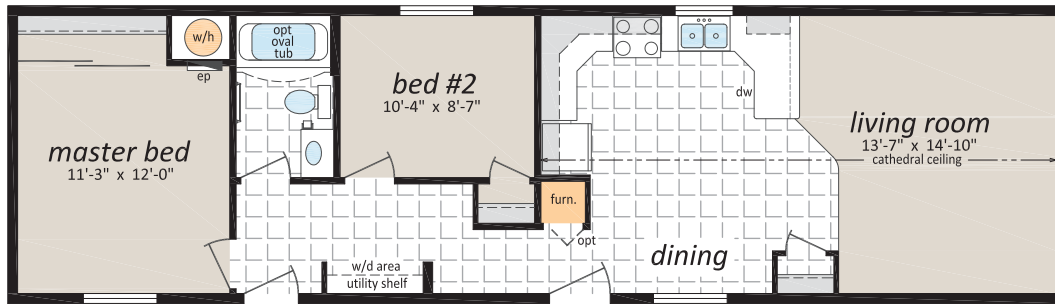
ML-172

16' x 76' - 1,216 sq. ft.
3 Beds, 2 Baths



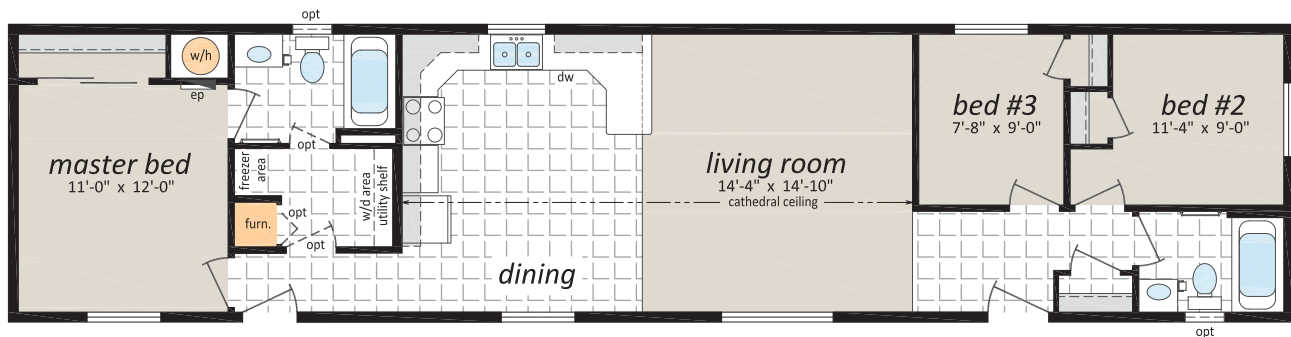
ML-173

16' x 56' - 896 sq. ft.
2 Beds, 1 Bath



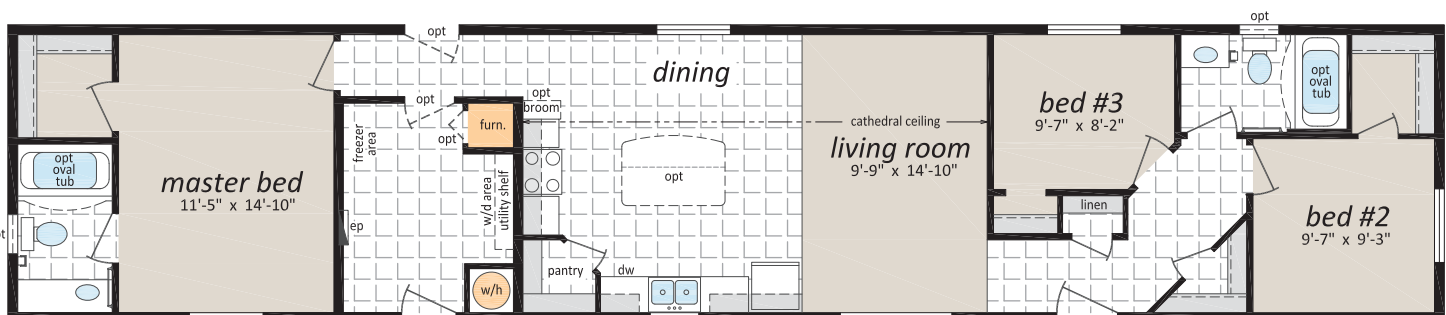
ML-174

16' x 68' - 1,088 sq. ft.
3 Beds, 2 Bath



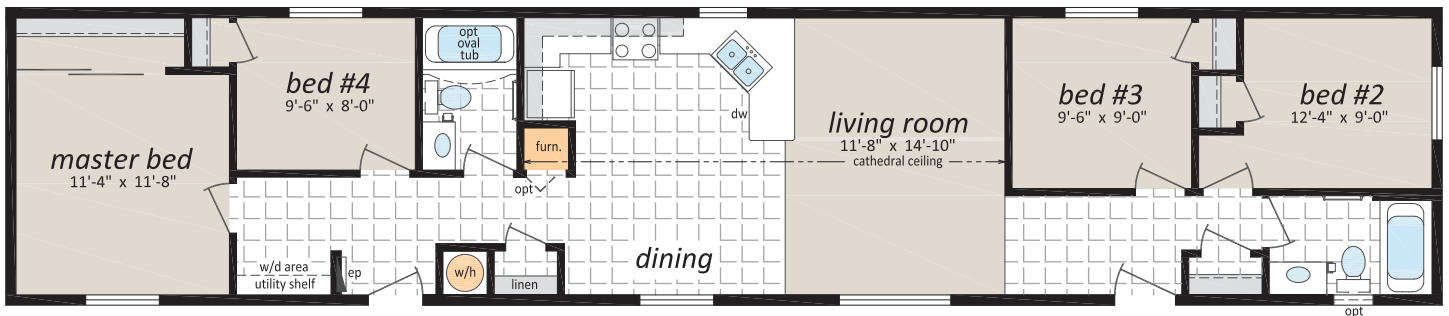
ML-1610

16' x 76' - 1,216 sq. ft.
3 Beds, 2 Baths



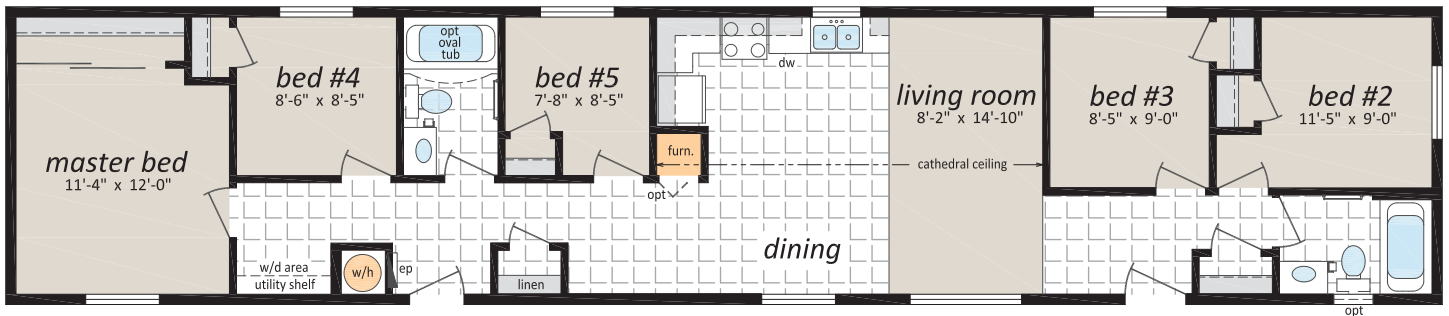
ML-1615

16' x 76' - 1,216 sq. ft.
4 Beds, 2 Baths



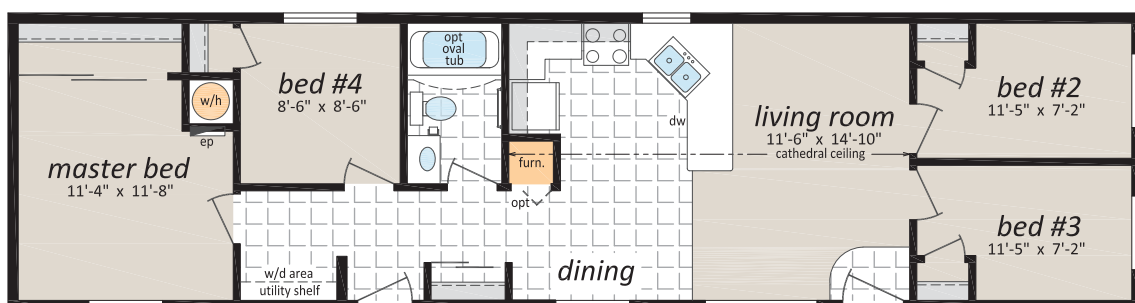
ML-1616

16' x 76' - 1,216 sq. ft.
5 Beds, 2 Baths



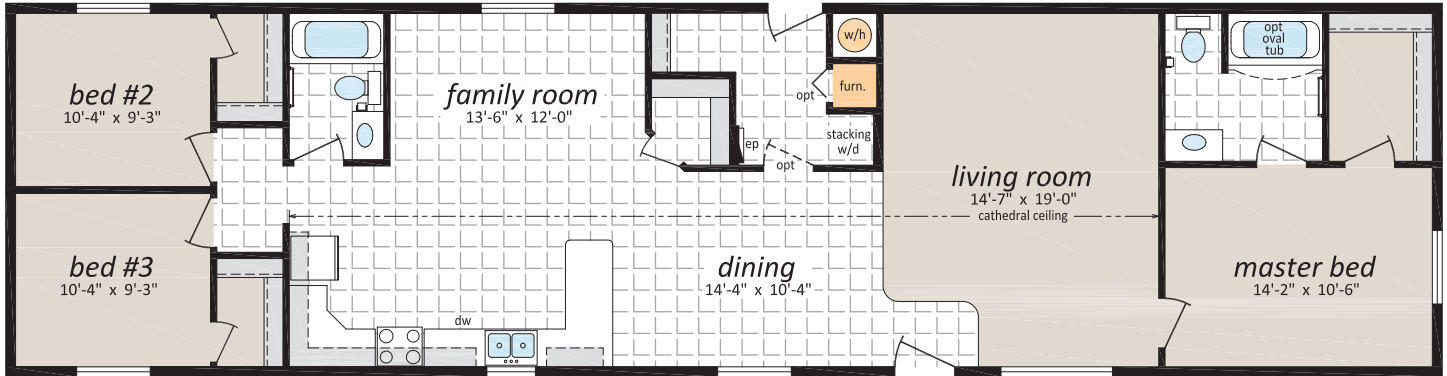
ML-1617

16' x 60' - 960 sq. ft.
4 Beds, 1 Bath



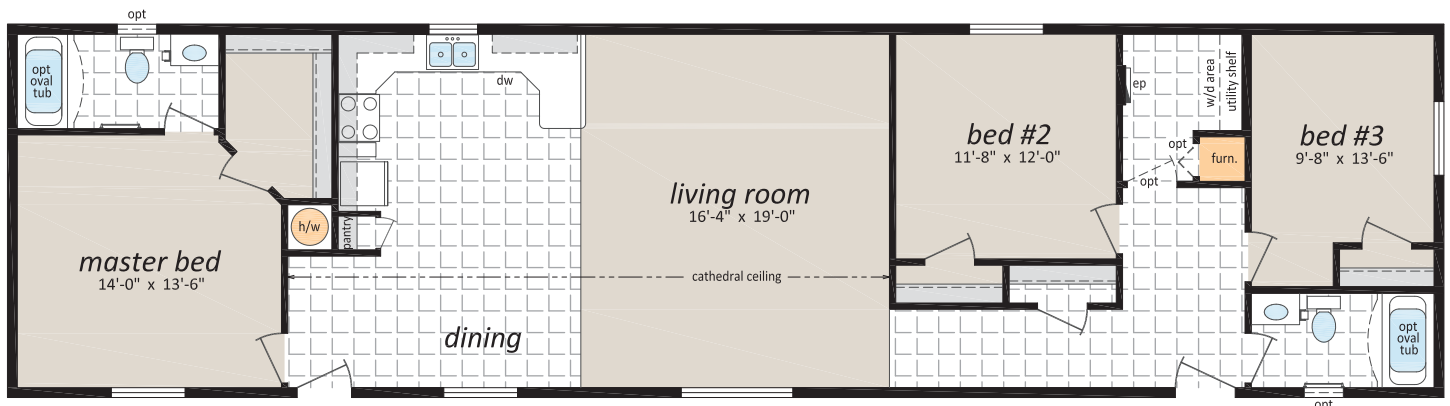
ML-201

20' x 76' - 1,520 sq. ft.
3 Beds, 2 Baths, Family Room



ML-202

20' x 76' - 1,520 sq. ft.
3 Beds, 2 Baths



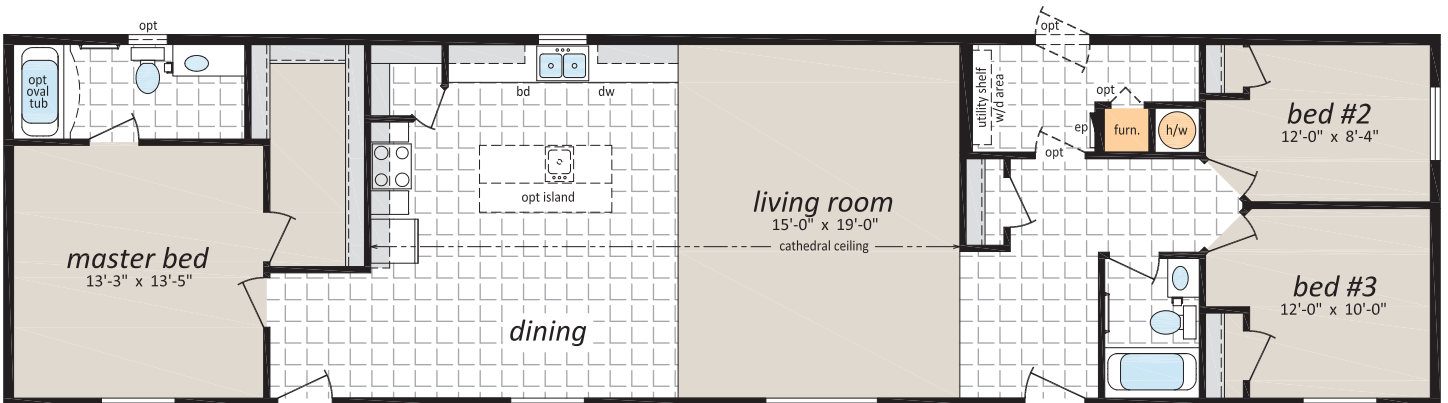
ML-203

20' x 76' - 1,520 sq. ft.
3 Beds, 2 Baths



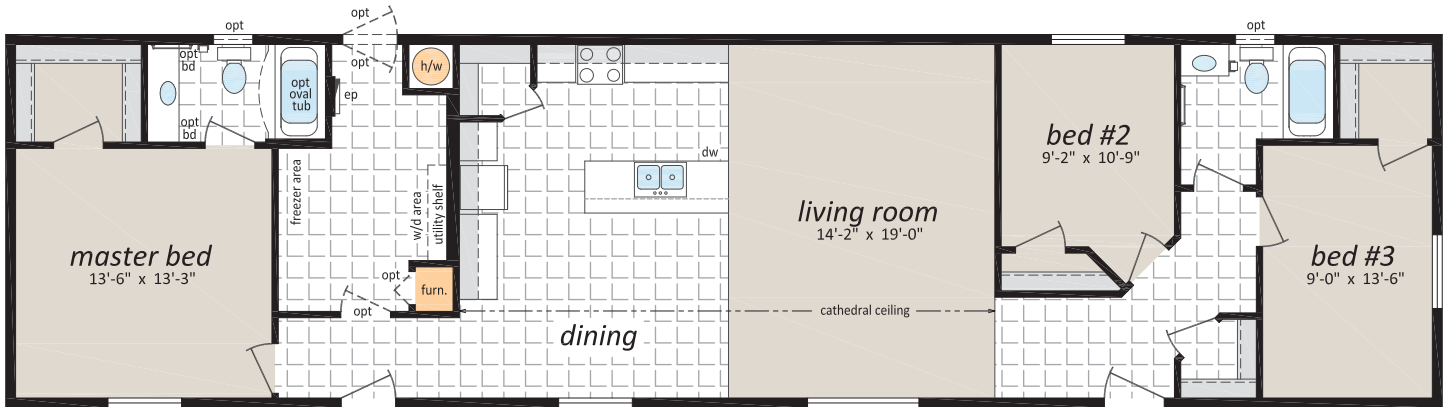
ML-204

20' x 76' - 1,520 sq. ft.
3 Beds, 2 Baths



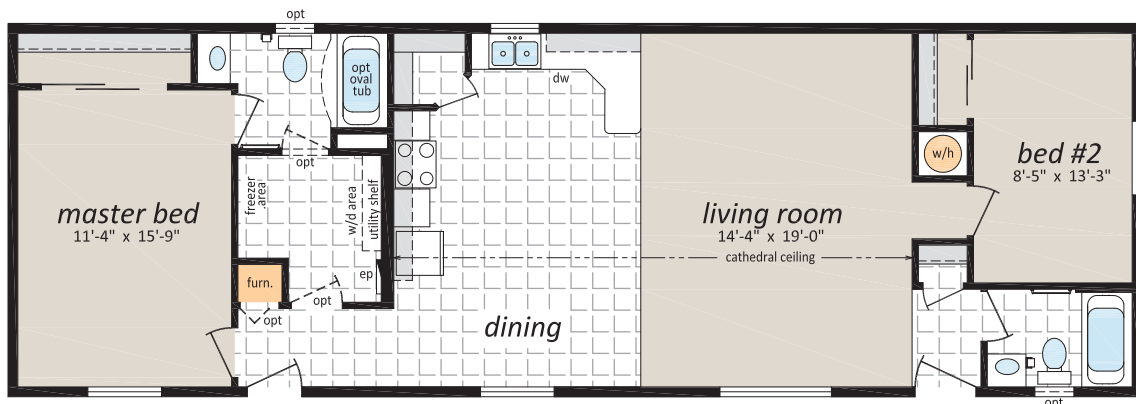
ML-205

20' x 76' - 1,520 sq. ft.
3 Beds, 2 Baths



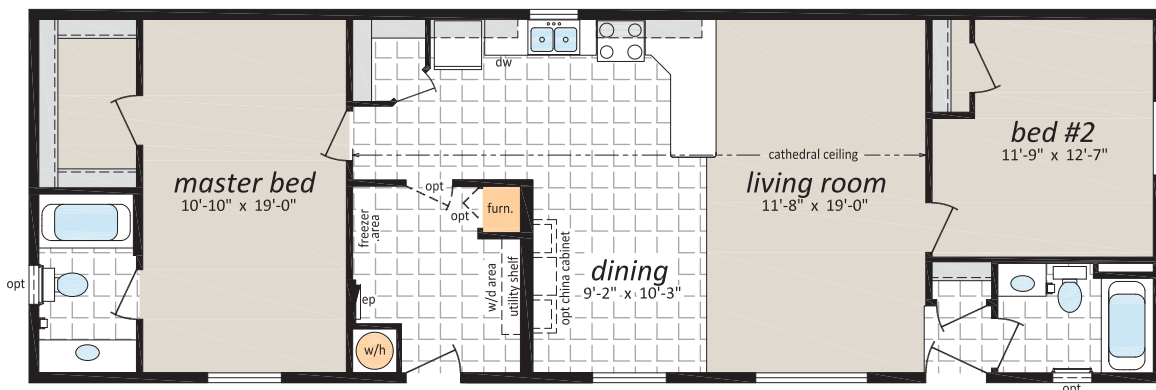
ML-206

20' x 60' - 1,200 sq. ft.
2 Beds, 2 Baths



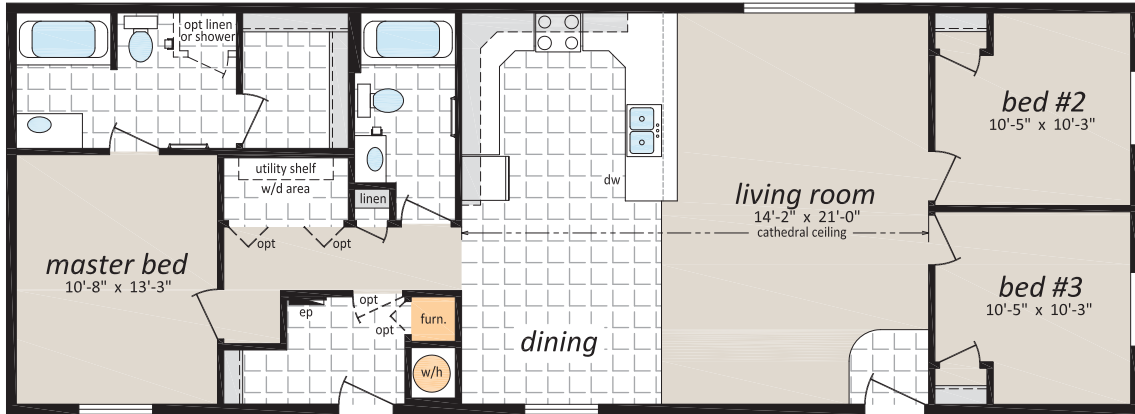
ML-207

20' x 60' - 1,200 sq. ft.
2 Beds, 2 Baths



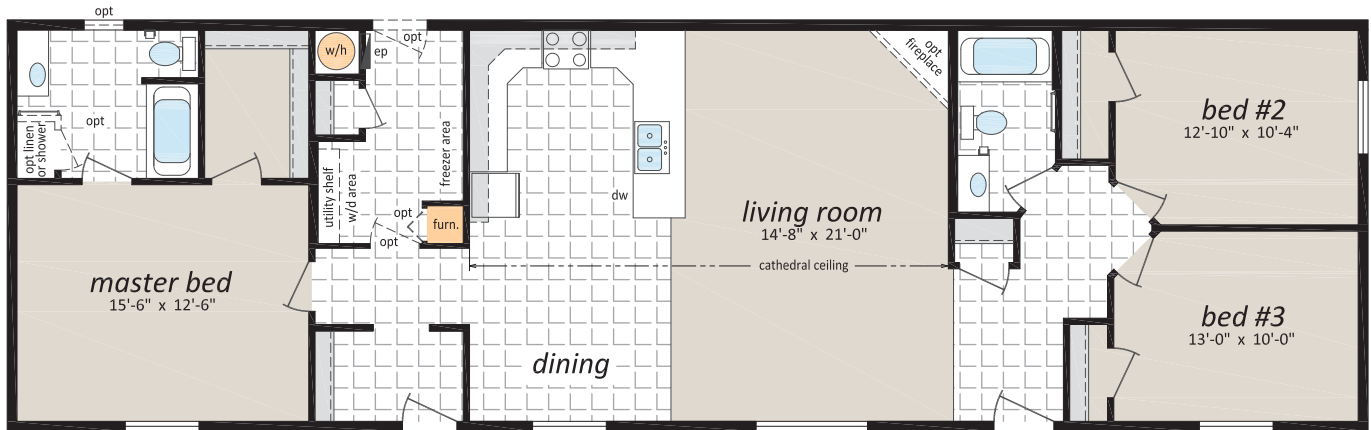
ML-1

22' x 60' - 1,320 sq. ft.
3 Beds, 2 Baths



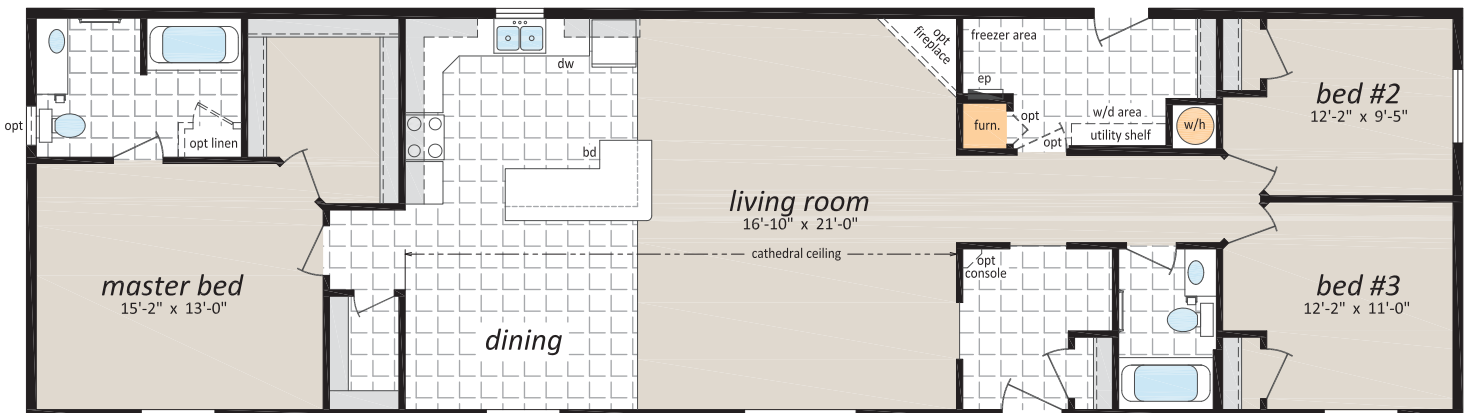
ML-2

22' x 72' - 1,584 sq. ft.
3 Beds, 2 Baths



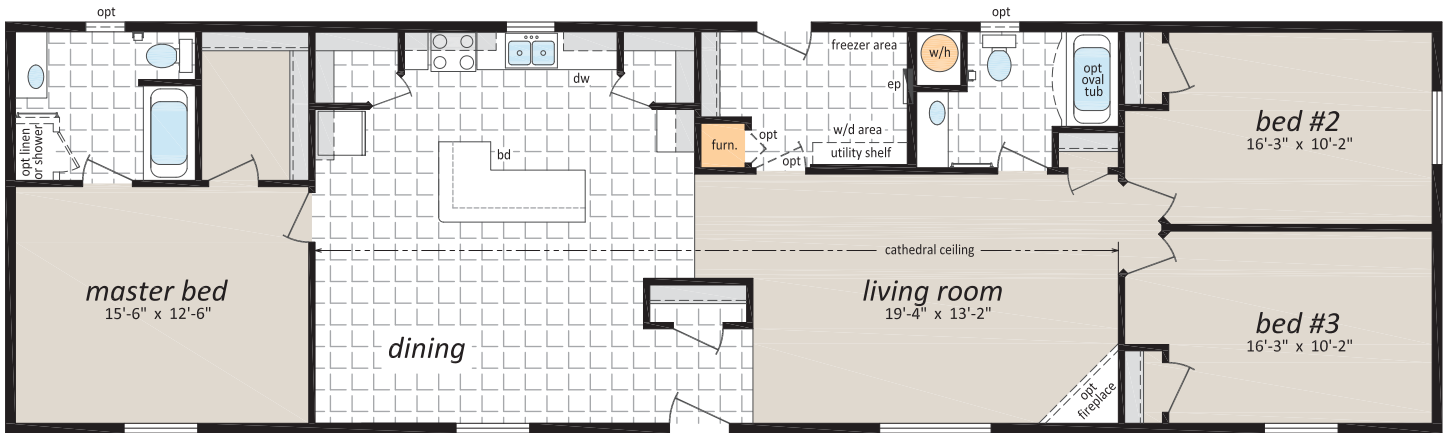
ML-3

22' x 76' - 1,672 sq. ft.
3 Beds, 2 Baths



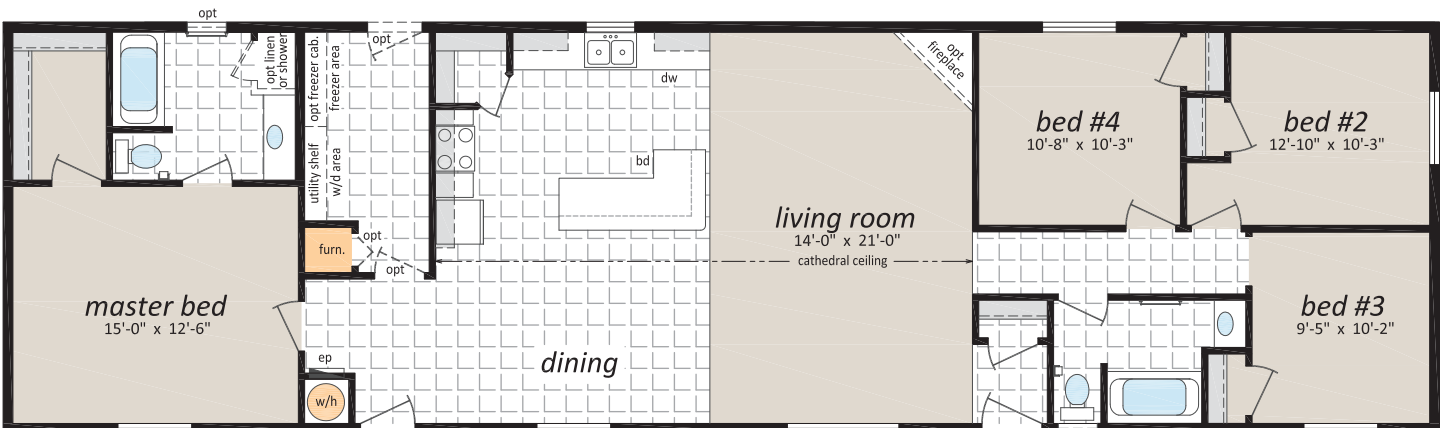
ML-4

22' x 76' - 1,672 sq. ft.
3 Beds, 2 Baths



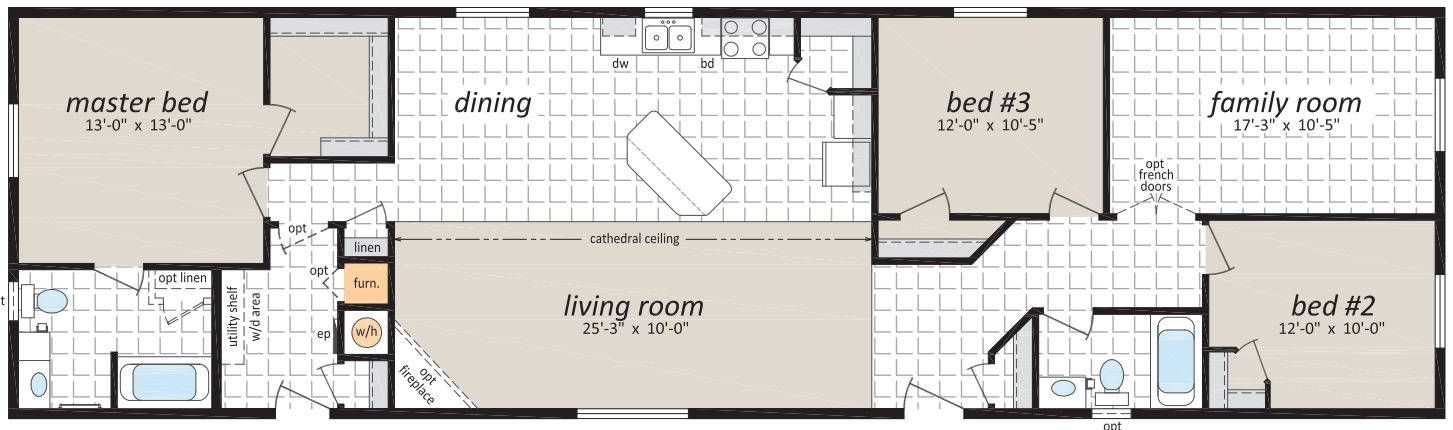
ML-5

22' x 76' - 1,672 sq. ft.
4 Beds, 2 Baths



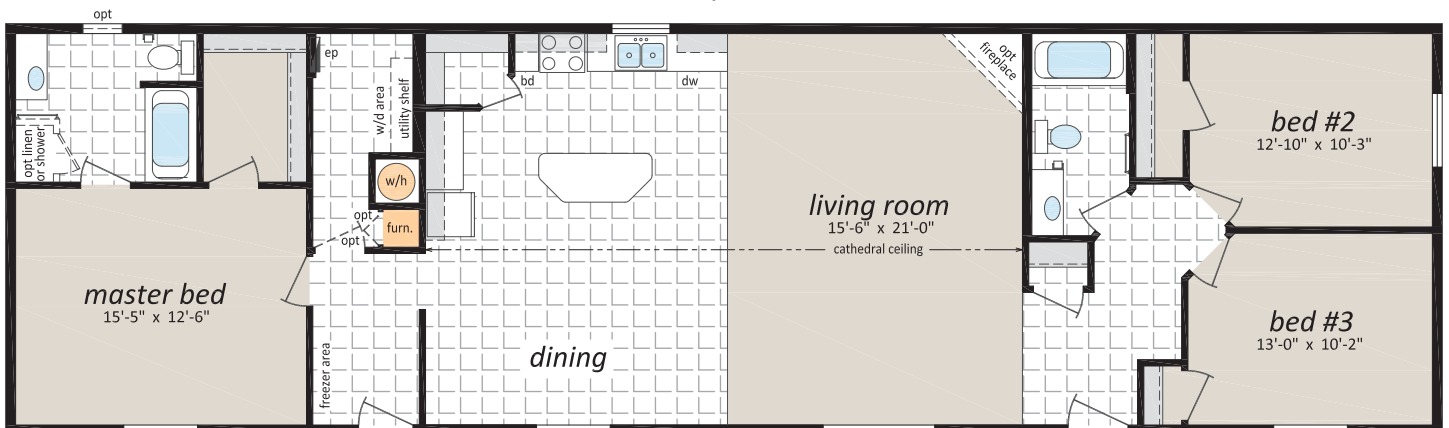
ML-6

22' x 76' - 1,672 sq. ft.
3 Beds, 2 Baths



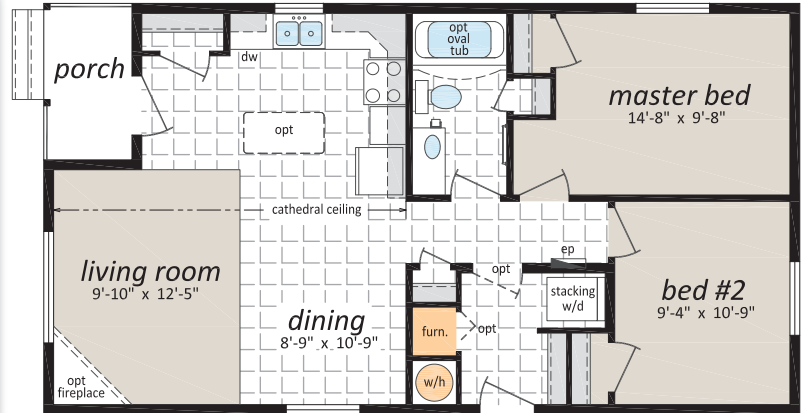
ML-7

22' x 76' - 1,672 sq. ft.
3 Beds, 2 Baths



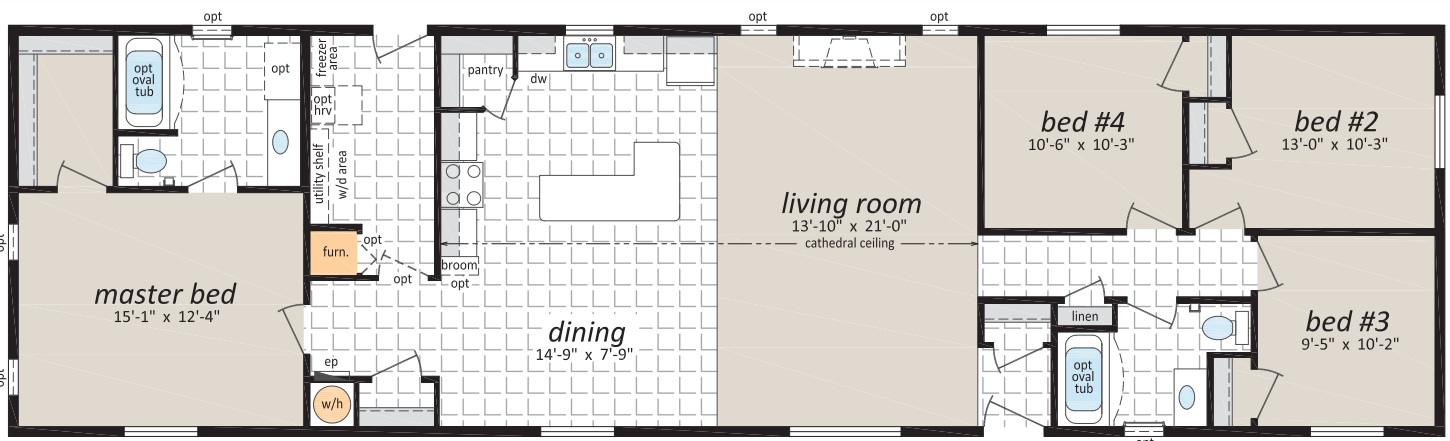
ML-9

22' x 40' - 880 sq. ft.
2 Beds, 1 Baths



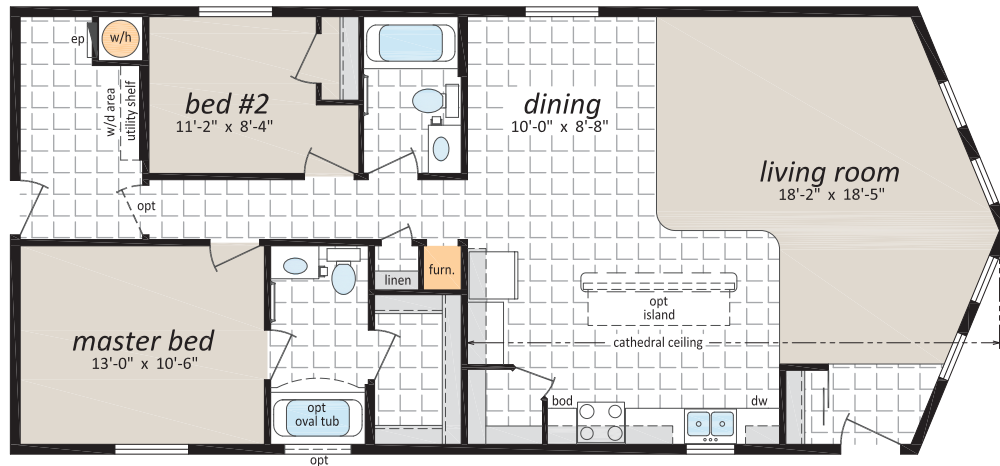
ML-10

22' x 76' - 1,672 sq. ft.
3 Beds, 2 Baths



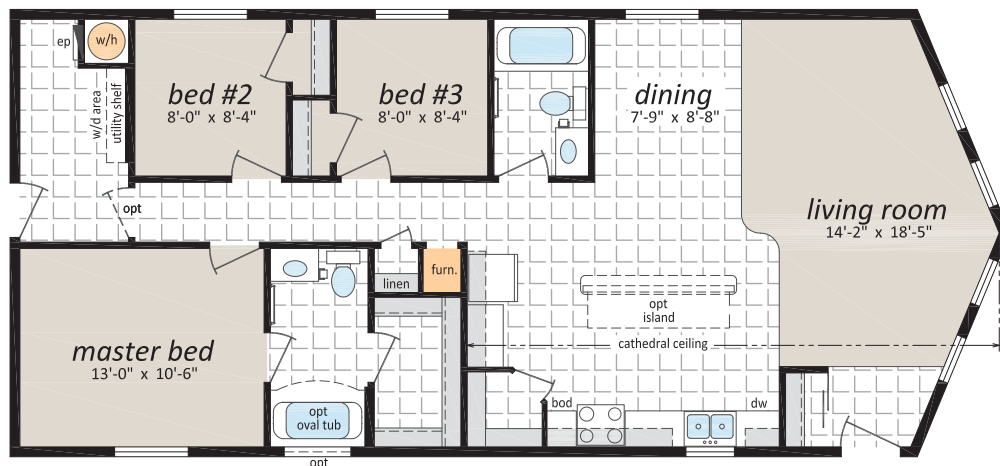
ML-241

24' x 53' - 1,248 sq. ft.
2 Beds, 2 Baths, Prow Front



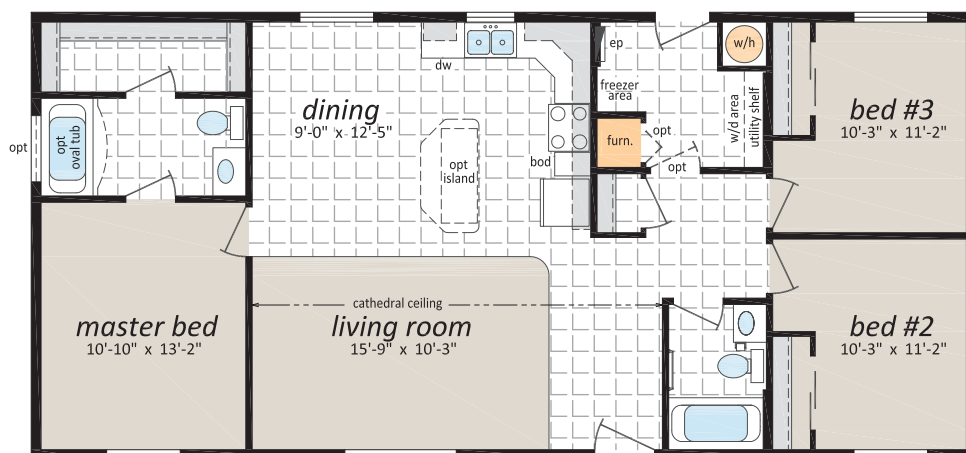
ML-242

24' x 53' - 1,248 sq. ft.
3 Beds, 2 Baths, Prow Front

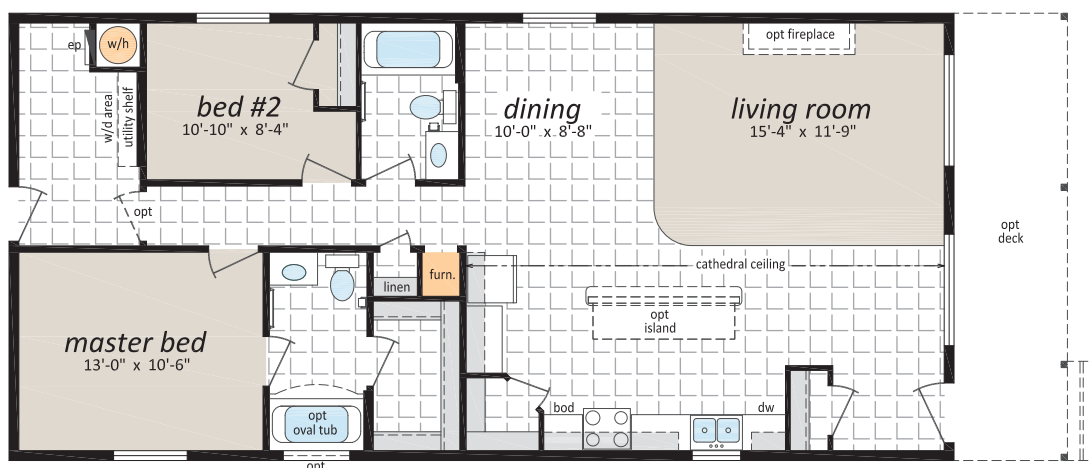


ML-243

24' x 50' - 1,200 sq. ft.
3 Beds, 2 Baths

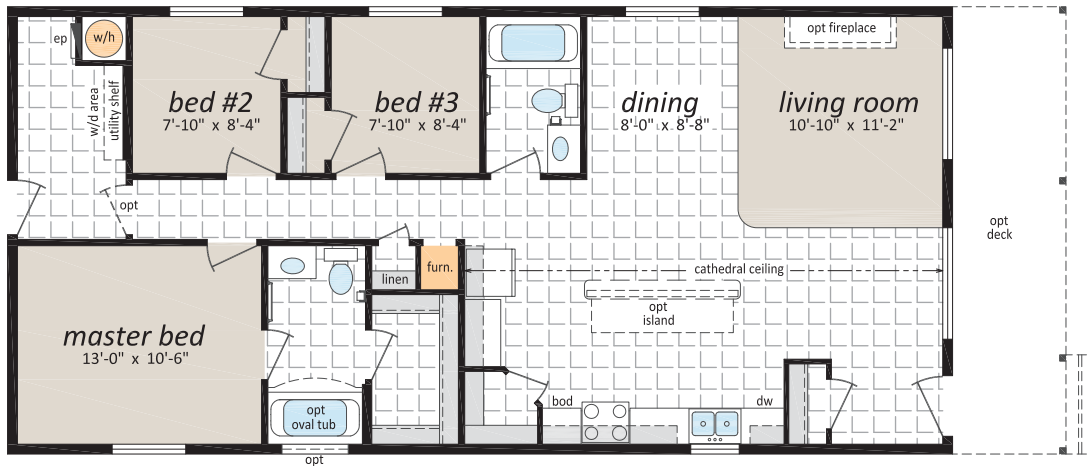
**ML-244**

24' x 50' - 1,200 sq. ft.
2 Beds, 2 Baths, Optional Porch



ML-245

24' x 50' - 1,200 sq. ft.
3 Beds, 2 Baths, Optional Porch



ML-246

24' x 60' - 1,440 sq. ft.
3 Beds, 2 Baths

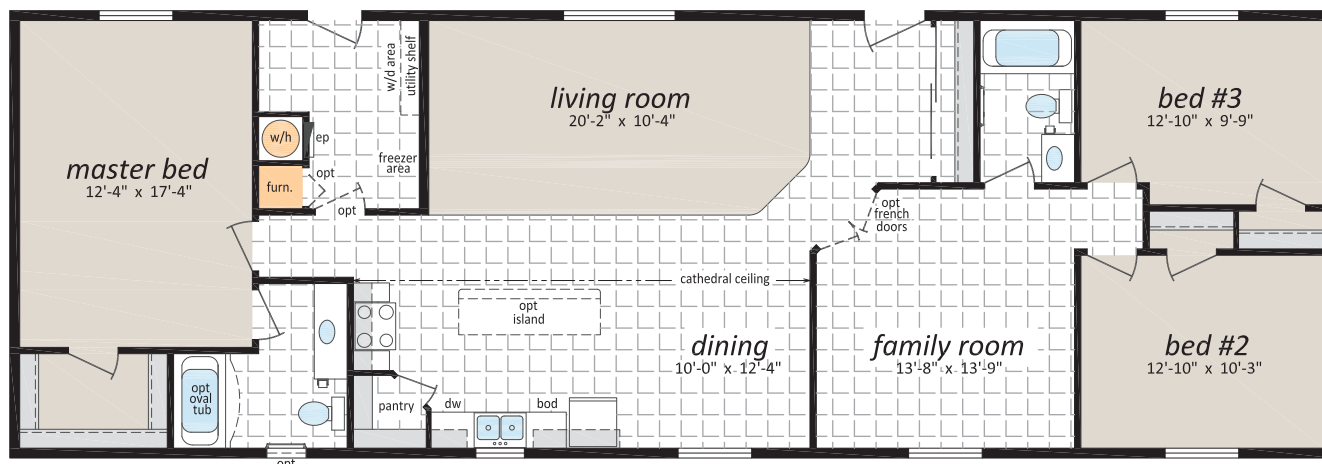


Artist Rendering;
may show optional features

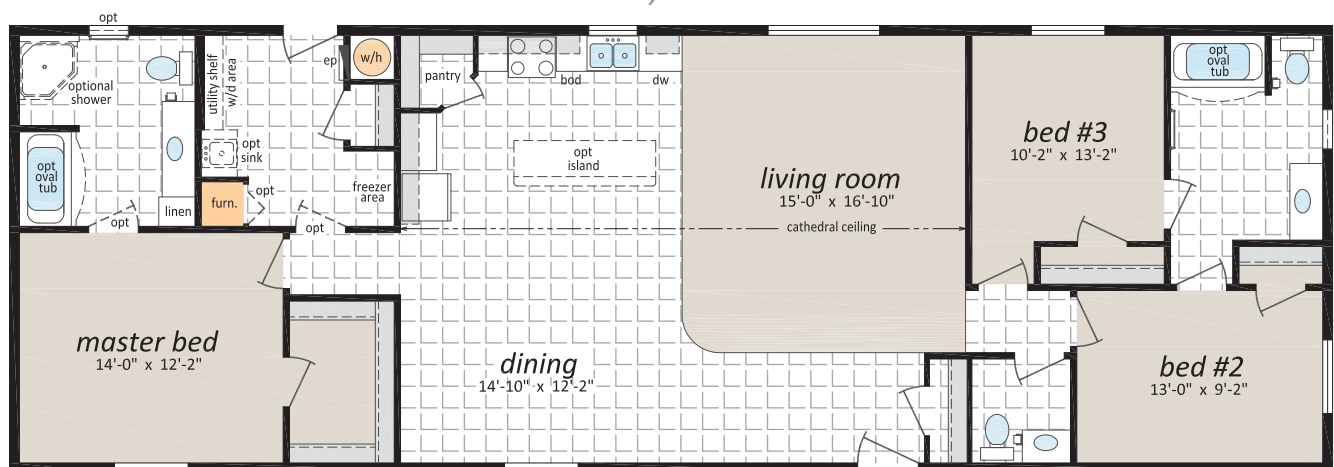


ML-247

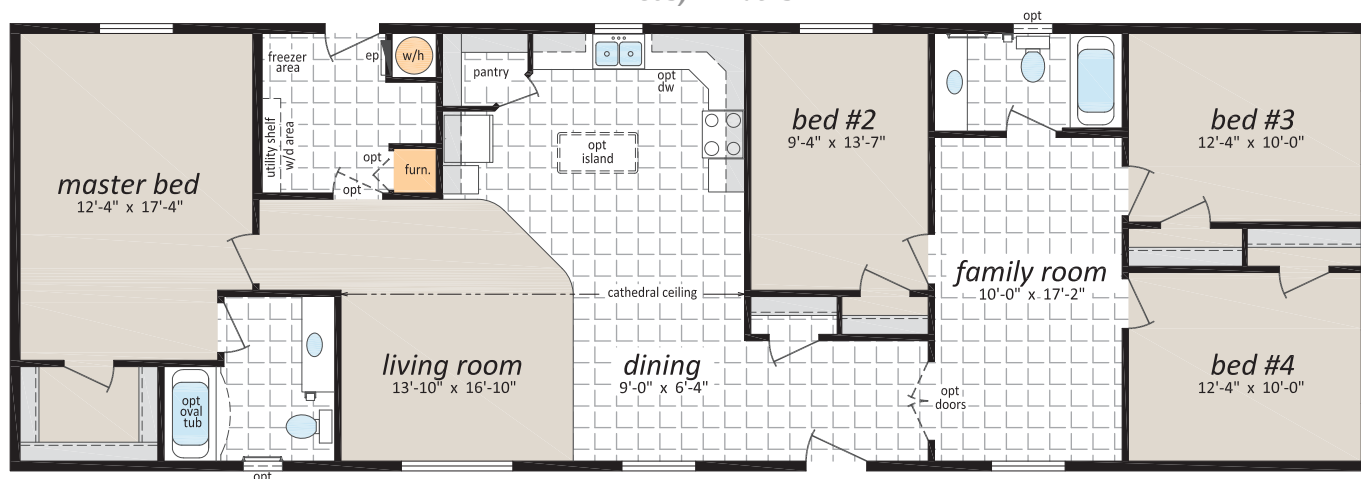
24' x 70' - 1,680 sq. ft.
3 Beds, 2 Baths

**ML-248**

24' x 70' - 1,680 sq. ft.
3 Beds, 2.5 Baths

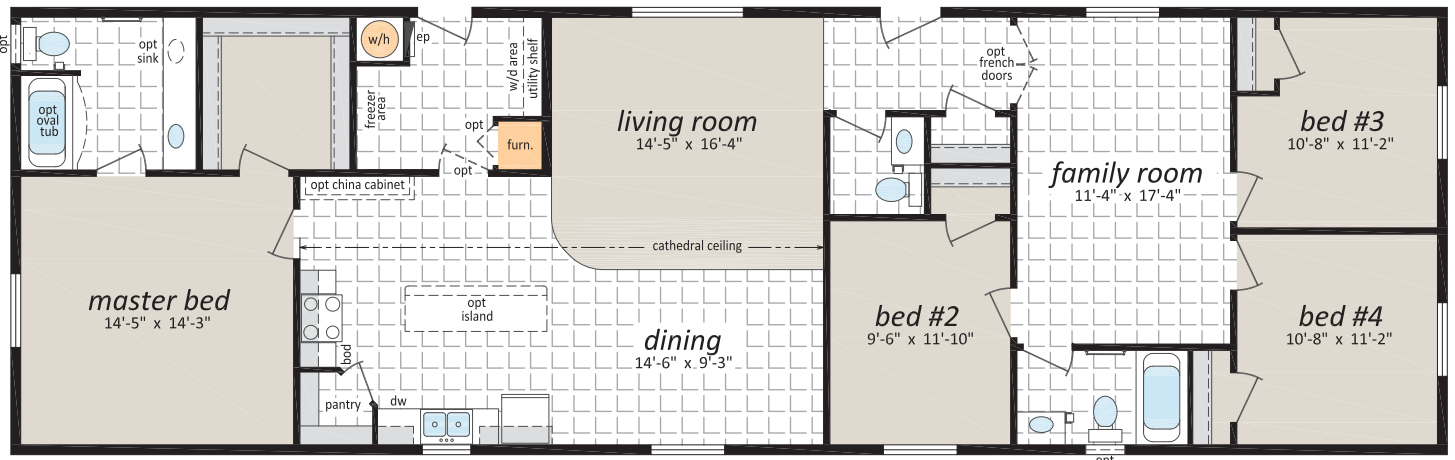
**ML-249**

24' x 72' - 1,728 sq. ft.
4 Beds, 2 Baths



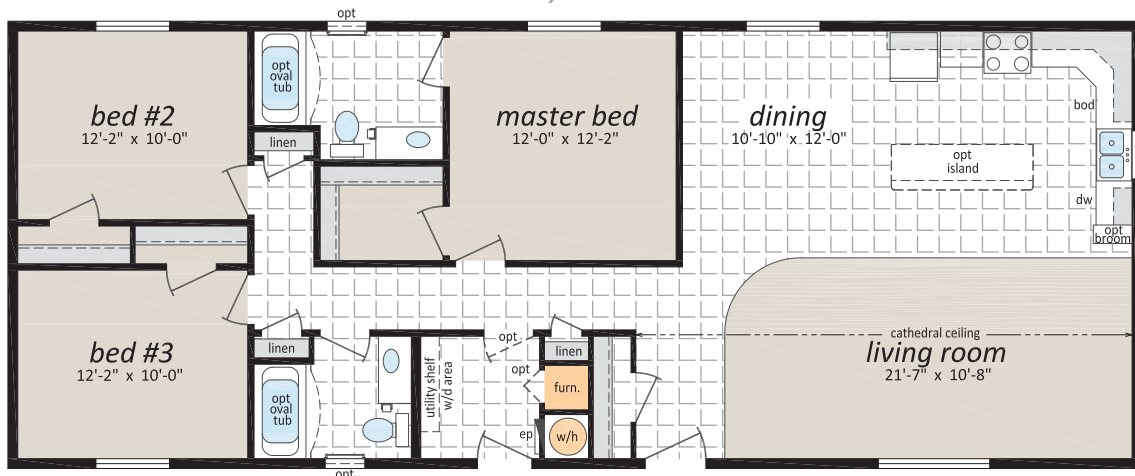
ML-2410

24' x 76' - 1,824 sq. ft.
4 Beds, 2 Baths



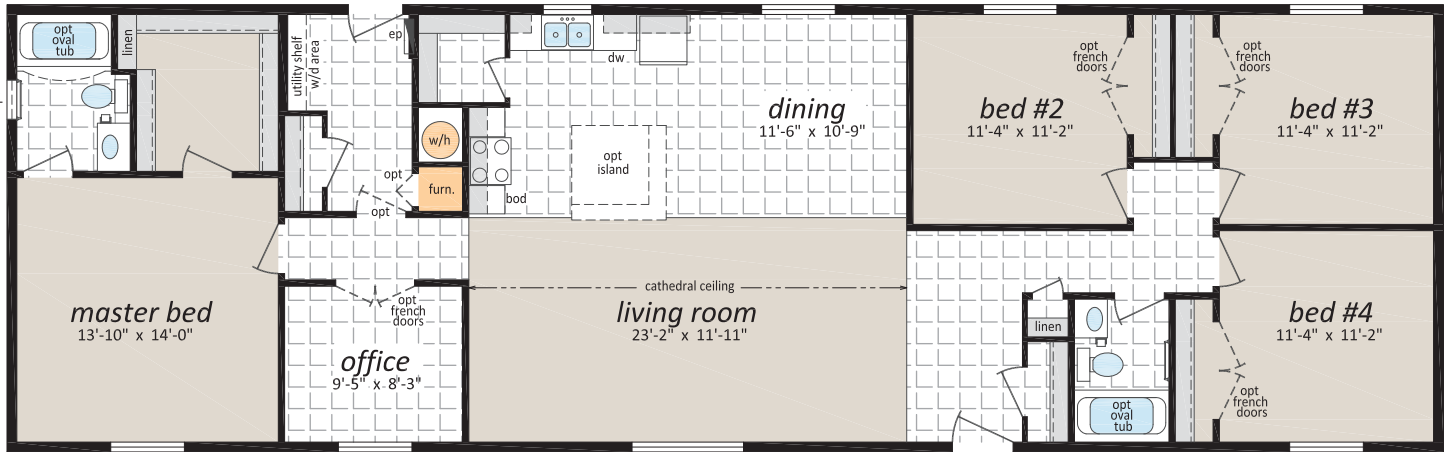
ML-2411

24' x 60' - 1,440 sq. ft.
3 Beds, 2 Baths



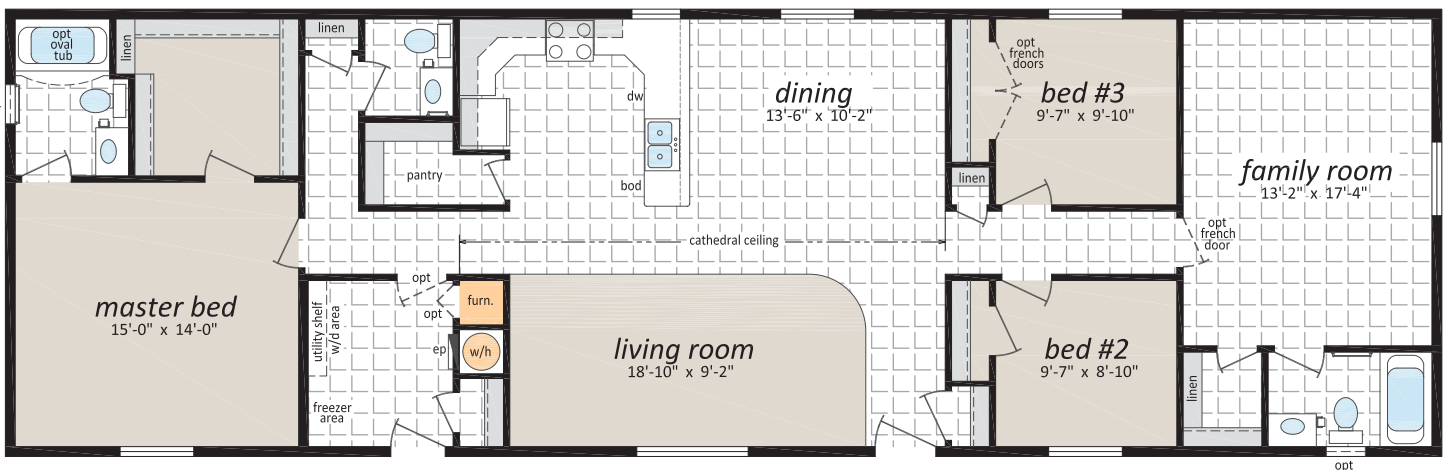
ML-2412

24' x 76' - 1,824 sq. ft.
4 Beds, 2 Baths



ML-2413

24' x 76' - 1,824 sq. ft.
4 Beds, 2.5 Baths

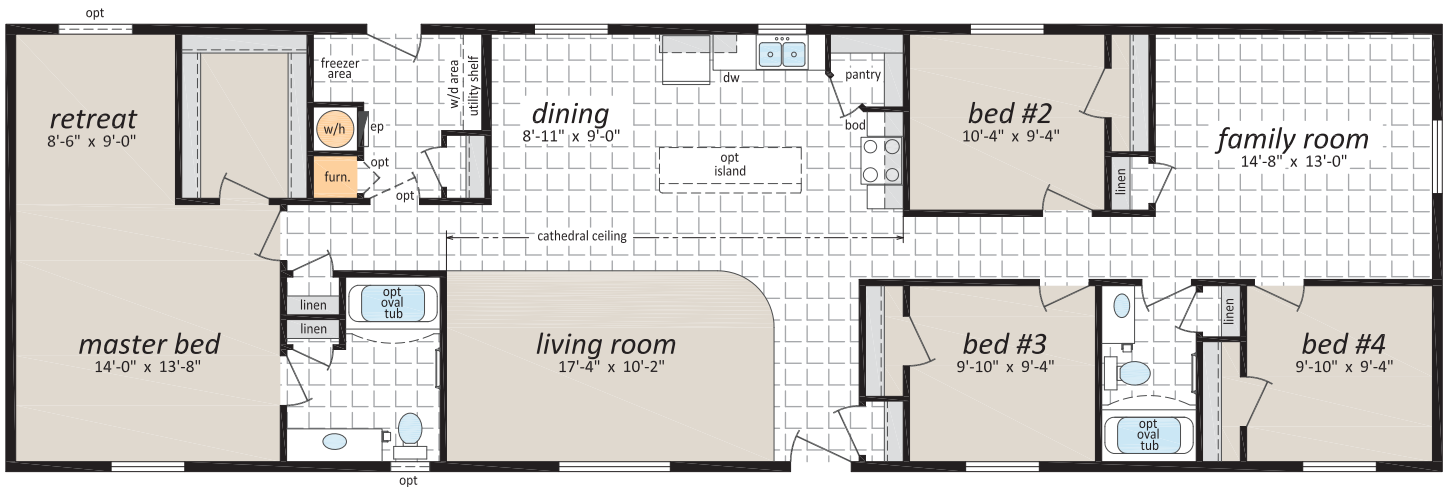


ML-2414

24' x 76' - 1,824 sq. ft.
4 Beds, 2 Baths



Artist Rendering;
may show optional features



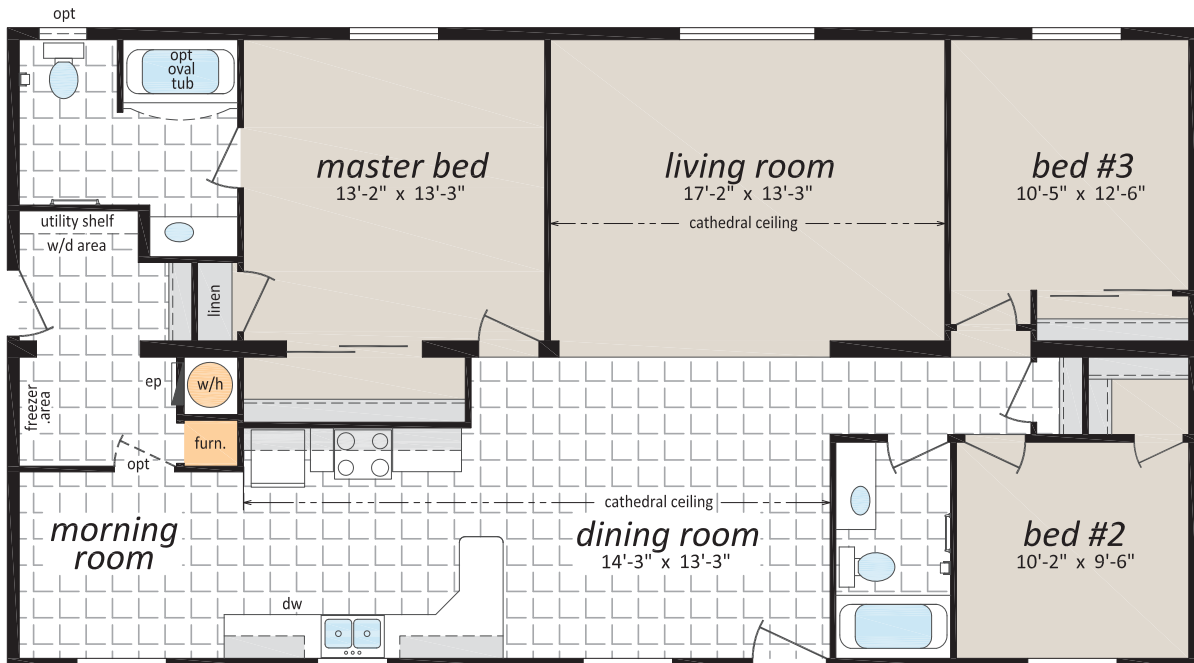
ML-2415

24' x 72' - 1,728 sq. ft.
3 Beds, 2 Baths



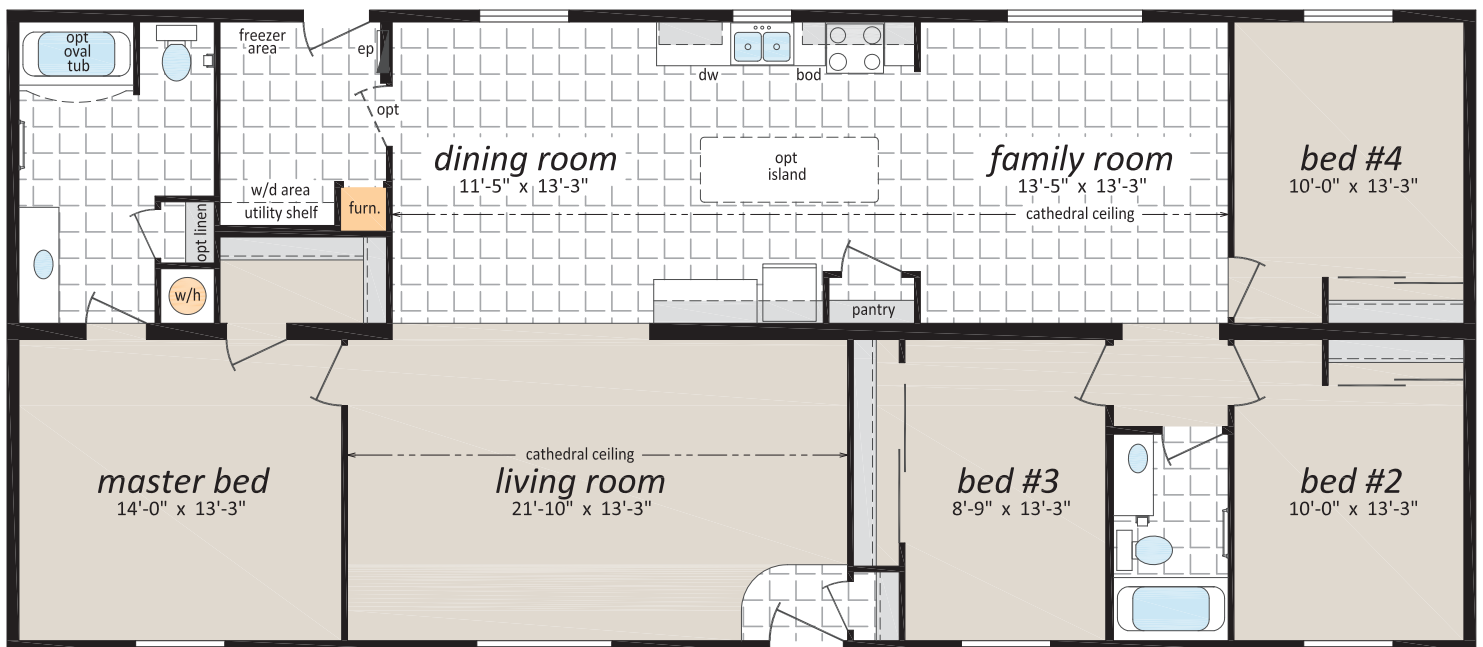
ML-28521

28' x 52' - 1,456 sq. ft.
3 Beds, 2 Baths, Morning Room



ML-28641

28' x 64' - 1,792 sq. ft.
4 Beds, 2 Baths, Family Room





Eurostyle Rangehood and Pot Filler Faucet



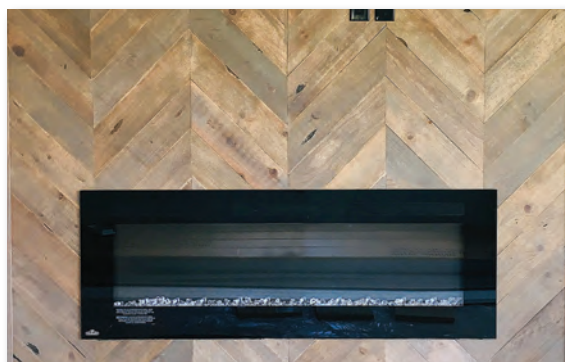
Chevron Barn Wood Accent on Island



LED Lit Vanity Mirror



Barn Door Interior Door



Electric Fireplace with Barn Wood Accent



Gas Stovetop & Deep Double Sink



Orleans Coloured Exterior Door

OPTIONAL FEATURES

Exteriors

- ☐ Skylights
- ☐ Deluxe Garden Doors
- ☐ Patio Doors
- ☐ 9 Light Exterior Door
- ☐ Polyurethane Stone Accents
- ☐ Vinyl Shakes in Gable
- ☐ Octagon Windows
- ☐ Oval Exterior door w/vented sidelight
- ☐ "Panorama" Living Room Windows
c/w Diamond Cut Ceiling
- ☐ Sequoia Select Upgrade Vinyl Siding
- ☐ Turbine Vents
- ☐ Extra Exterior GFI
- ☐ High Snow Load

Interiors

- ☐ Painted Drywall Throughout Home
- ☐ Cathedral Ceiling in Master Bedroom
- ☐ Laminate Flooring
- ☐ Carpet in 2nd and 3rd Bedrooms
- ☐ French Doors
- ☐ Mirrored Closet Doors
- ☐ Freezer Cabinets
- ☐ Utility Room Door c/w Grill
- ☐ Ceiling Fan with Lights
- ☐ 2 - 4' Ceiling Mount or Recessed Fluorescent
Lights
- ☐ Decora Switch Package
- ☐ 2" PVC Blinds
- ☐ Programmable Thermostat
- ☐ Benton Style Doors

Bathroom

- ☐ Glass Mosaic Tile Back splash
- ☐ Ceramic Tile Back splash
- ☐ Jetted Oval Tub
- ☐ Jetted One Piece Tub and Shower
- ☐ 60" Shower c/w Glass Doors
- ☐ Accessible Toilet
- ☐ Grab Bars
- ☐ Full tiled shower w/sliding glass doors
- ☐ Vessel Vanity Sink w/ 90 degree Faucet

Kitchen

- ☐ Raised Panel Solid Wood Cabinet Doors
- ☐ European Stainless Steel Range hood
- ☐ Etched Glass Cabinet Doors
- ☐ China Cabinets and Hutches
- ☐ Under Cabinet Lighting
- ☐ Upgrade High Definition Laminate Counter tops
- ☐ Ceramic Tile Back splash
- ☐ Glass Mosaic Tile Back splash
- ☐ Tip Out Soap Tray Below Kitchen Sink
- ☐ 4 Bulb Track Light c/w Dimmer Switch
- ☐ 24" Fluorescent Light Above Kitchen Sink
- ☐ Pot and Pan Drawers
- ☐ Combination Microwave and Range hood
- ☐ Goose Neck Moen Faucet

Utilities

- ☐ Gas Fireplace complete with Air Circulating Fan
- ☐ Gas Water Heater
- ☐ Gas Furnace
- ☐ Oil Gun Furnace
- ☐ Self Cleaning Range
- ☐ Two Door Side By Side Refrigerator
- ☐ Handi-Hite Bottom Mount Refrigerator
- ☐ Stacking Washer and Dryer
- ☐ Front Load Washer and Dryer
- ☐ Central Vacuum System
- ☐ Roughed in for Central Vacuum
- ☐ Air Conditioner Ready Furnace
- ☐ 2 1/2 Ton Air Conditioner
- ☐ Extra Telephone Jacks
- ☐ Surge Protector
- ☐ Garage Ready Package

Check off your extras ...

... and we will take care of the rest!



The Mainline Home Series



SHELTER
HOME SYSTEMS

P.O. Box 845 #200 Hwy 18 West
Estevan, SK S4A 2A7
www.shelterhomes.ca



Authorized Retailer: