

ADDITIONAL PROGRAMS AND SERVICES

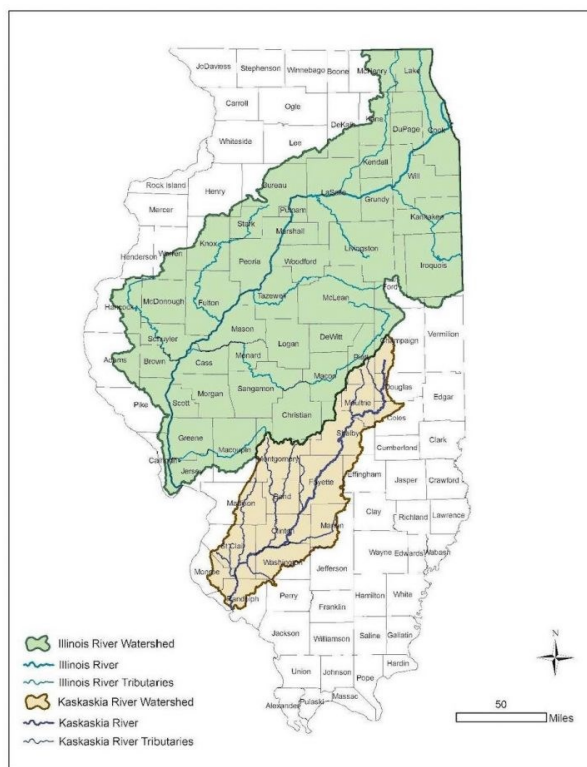


WE ARE THE GOVERNMENT, AND WE ARE HERE TO HELP YOU 😊

2

CONSERVATION RESERVE ENHANCEMENT PROGRAM (CREP)

Conservation Reserve Enhancement Program Boundary



- Suspended in 2015 but reinstated in 2022.
- Goals are to decrease annual sediment, nitrogen and phosphorus loading in the Illinois and Kaskaskia watersheds.
- Increase the population of avian “Species of Greatest Conservation Need”
- Increase the number of native fish species and environmentally sensitive aquatic insects.

3

Eligibility Criteria



WHAT IS THE LAND CRITERIA

- Cropland (need a cropping history) or Marginal Pasture
- Must be located in the 100-year floodplain in either the Illinois or Kaskaskia watersheds.
- Or a previously farmed wetland within the watershed.
- Highly Erodible Land next to the floodplain with an erodibility index score of 8 or greater.

FEDERAL CREP:

- 15-year Federal Contract with FSA with annual payments
- A minimum of 3 acres is required
- 25% incentive rate above the weighted average Soil Rental Rate.
- Signup Incentive Payment (SIP)
- Practice Incentive Payment (PIP)
- 50% cost share reimbursement on approved conservation practices.
- Must signup for State CREP for additional 15 years or permanent conservation easement when you enroll in Federal CREP.

Eligibility Criteria



STATE CREP

- One-time lump sum payment based on the weighted average Soil Rental Rate.
- 15-year contract with the option to extend for another 15 years.
- Can choose to do a permanent conservation easement. The easement will be held by IDNR, you cannot buy it out and if the property is sold the easement goes to the new owner.

ADDITIONAL INFORMATION

- Landowner maintains ownership, management, and use of property and it does not authorize public access.
- You can add additional non-crop acres that are contiguous with Federal CREP acres. (Must be approved by IDNR)
- 50% cost share on all easement options.

You Can Do:

- **Hunting (Including leases), fishing, temporary camping, and other recreational activities.**
- **Forest and Wildlife Management (some activities may require approved management plan).**
- **Maintenance of conservation cover, roads, waterways, etc.**

You Can't Do:

- **No agriculture production**
- **No residential, commercial, or industrial development**
- **No surface mining**
- **No racetracks or off-road recreational vehicle use that disturbs the surface vegetation.**
- **No dumping or incinerating of refuse, trash, garbage, rubbish, junk, ashes, or other materials.**
- **No filling, excavating, mining, drilling, removal of topsoil, sand gravel, or rock.**



VEGETATIVE FILTER STRIP ASSESSMENT LAW

6

Provides for a reduction in the assessed value of cropland certified as meeting the requirements of the law to 1/6 of its value.

3/1/2023

7

HOW DO YOU QUALIFY FOR THIS PROGRAM

- Any land that is located between a farm field and an area to be protected, including but not limited to surface water, a stream, a river, or sinkhole is eligible.
- You are required to plant a vegetative filter strip that has a uniform permanent herbaceous vegetation that can tolerate pesticides used in crop fields.
- The minimum and maximum width of the vegetative filter strip required to be eligible for the assessment reduction is determined by the slope of the land on which the vegetative filter strip is located. (Consult NRCS or SWCD).
- You can apply by contacting your local Soil and Water Conservation District Office.

DEKALB COUNTY DITCH MAINTENANCE

DeKalb County Stormwater Ordinance

- Any agriculture land disturbing activity within 100 feet of a lake, pond, river, stream, wetland, whether farmed, delineated, or depicted in the County GIS maps, or floodplain requires a Site Development Permit from the DeKalb County Government.
- Landowners can work with DeKalb County SWCD to request a waiver of the permit for simple ditch maintenance projects. (\$250.00 fee) The SWCD will provide oversight of the project.
- No spoil can be deposited in the floodplain or wetlands associated with the ditch.
- No straightening of the ditch allowed.



CUSTOM CONSERVATION SEEDING

- Native seedings
- Filter Strips
- Waterways



Pheasants Forever 10- foot drill available to rent for conservation plantings.

3/1/2023