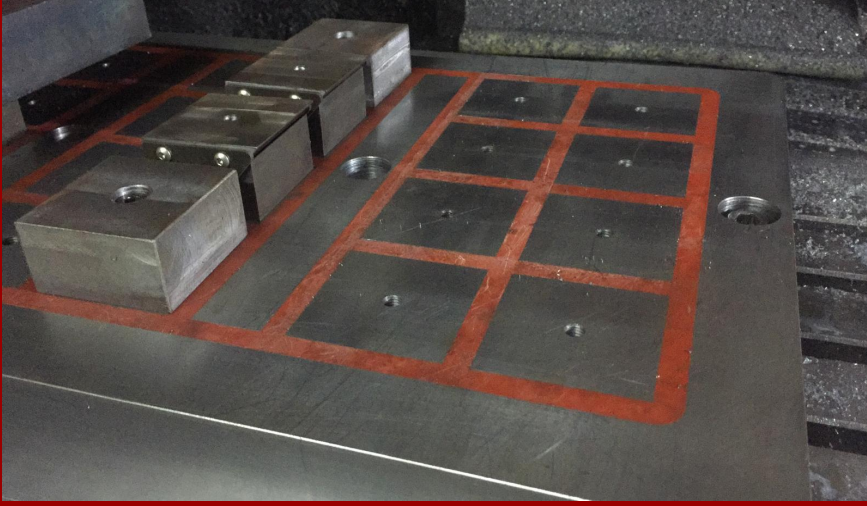


### MT62 Series



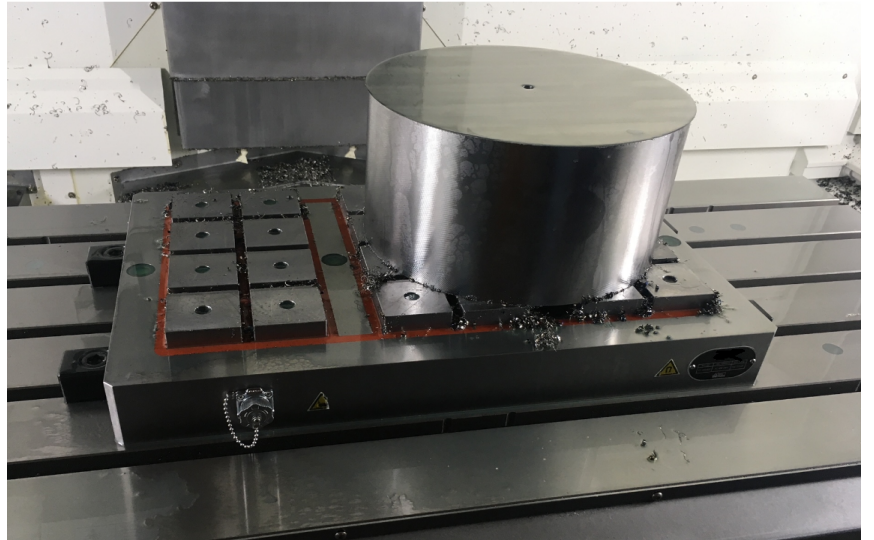
- Mono block steel
- M8 Screw
- Fixed Pole MT62PF
- Easy montage
- Increases the service life
- Protects the magnetic chuck
- Mobile Poles MT62PM



## Technical Specifications

MT62PF Fixed Pole 18 mm  
application example

Type	Size
MT62PF	62x62x18 mm
MT62PM	62x62x32 mm



Fixed Pole 18 mm thickness