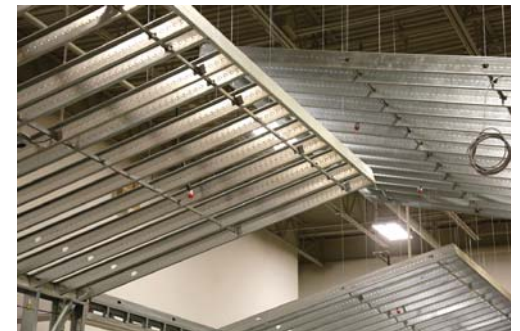
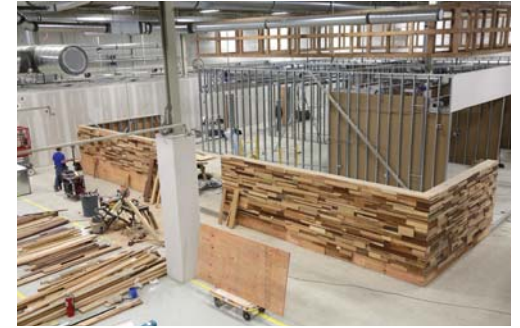




PROJECT SPOTLIGHT

AGM Automotive Global Headquarters
Troy, Michigan



Transforming a former warehouse into a modern, 40,000 sq. ft. working environment for 185 headquarters personnel, LLP Construction served not only as construction manager but also provided space planning, move management and furniture selection on this design-build project. Highlights include 30 ft. ceilings with architectural wood elements suspended over working spaces plus façade updates with new windows for enhanced natural lighting. The project also features a new corporate forum space and concrete platform for conference rooms as well as a new HVAC system with rooftop units.



INTRODUCING LLP CONSTRUCTION SERVICES

Headquartered in Detroit's Corktown, LLP Construction regularly meets—and often exceeds—client objectives on costs, scheduling and quality for commercial projects of all types and sizes.

Our extensive experience and strong leadership skills coupled with the close collaboration we extend to owners, architects and contractors enable us to consistently achieve solutions that are innovative and creative yet practical.

You can rely on us for services including:

- Design-Build
- General Contracting
- Owner's Representation
- Post-Construction
- Pre-Construction
- Space Planning



ADVANTAGES

If you're seeking an accomplished and responsive resource for your next project, LLP Construction Services brings numerous advantages to the table, among them:

- **A passion for building in Detroit.** Headquartered in Corktown, we're currently working on several projects within the city. We are well familiar with Detroit's permitting processes, and enjoy excellent working relationships with its building inspectors.
- **Responsiveness.** Many of our clients are surprised at the quickness with which we can launch a project. Of course, the same commitment applies to the way we assemble budgets, create proposals, answer your inquiries and address construction issues as they arise.
- **A fresh and unique approach.** With an extensive background in design as well as construction, we deliver a unique and beneficial point of view to any endeavor. Like few others, we can take your project from initial concept all the way through to completion and close-out.
- **A "won't-say-no" attitude.** While many others won't consider smaller projects, we tackle them with the same enthusiasm as we do larger ones. Count on us for jobs no matter the size or complexity.
- **Expertise spanning all areas.** From our headquarters in Detroit and office in Birmingham, we serve clients in Southeastern Michigan and beyond. Trust us for design-build, general contracting, owner's representation and space planning as well as pre- and post-construction services.
- **Woman ownership.** Founder and President Lisa Petrella has more than 20 years of experience in the construction services industry, and is an active member of Commercial Real Estate Women Detroit (CREW).

To discuss an upcoming project or for more information, please contact us today.



Lisa Petrella, President
LLP Construction Services
1800 Michigan Avenue
Detroit, MI 48216
313.482.9100 | LLPServicesInc.com