

FALCO ENGINEERING

About Falco

Trusted Partner in Engineering Service

Falco Engineering is a service providing company having its design and development office in Bangalore, India with a strength of 6+ design and development engineers.

Falco is committed to developing and retaining satisfied clients by providing enduring designs and the highest quality professional services.

We strive to work in project. partnership with our clients to provide design options, opportunities, and technologies that best fit our clients' goals.

In Falco we assure the leadership to deliver client satisfaction and outstanding engineering services, while maintaining an emphasis on project cost, safety, reliability, and visual impact when designing each

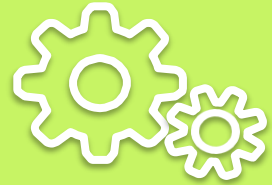


Our Vision

Falco Engineering endeavor continuously for excellence in professional engineering through Quality, Innovation, Teamwork and Value creation and to emerge as a premium engineering service company in the Engineering World also to impart quality profession that meets the needs of present and emerging technological world.

Our Mission

To innovate, create, and redefine to provide the standard quality products, solutions and services to our valuable customers at the best competitive rates.



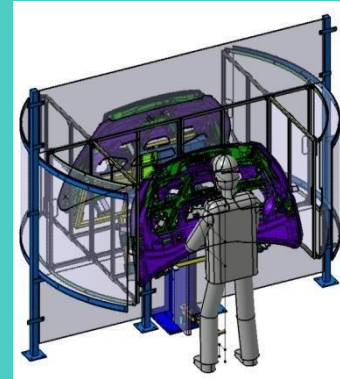
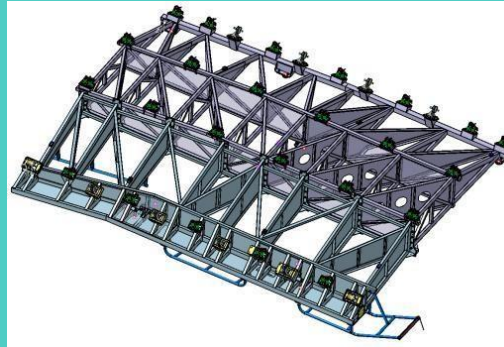
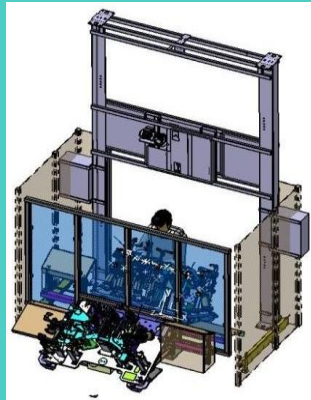
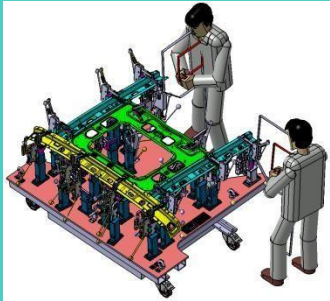
CONCEPT TO DESIGN

As a Product design team, Falco perform the concept after feasibility studies and options appraisals can be carried out and a project brief has been prepared. The concept design represents the design team's initial response to the project brief.

Engineering Skills

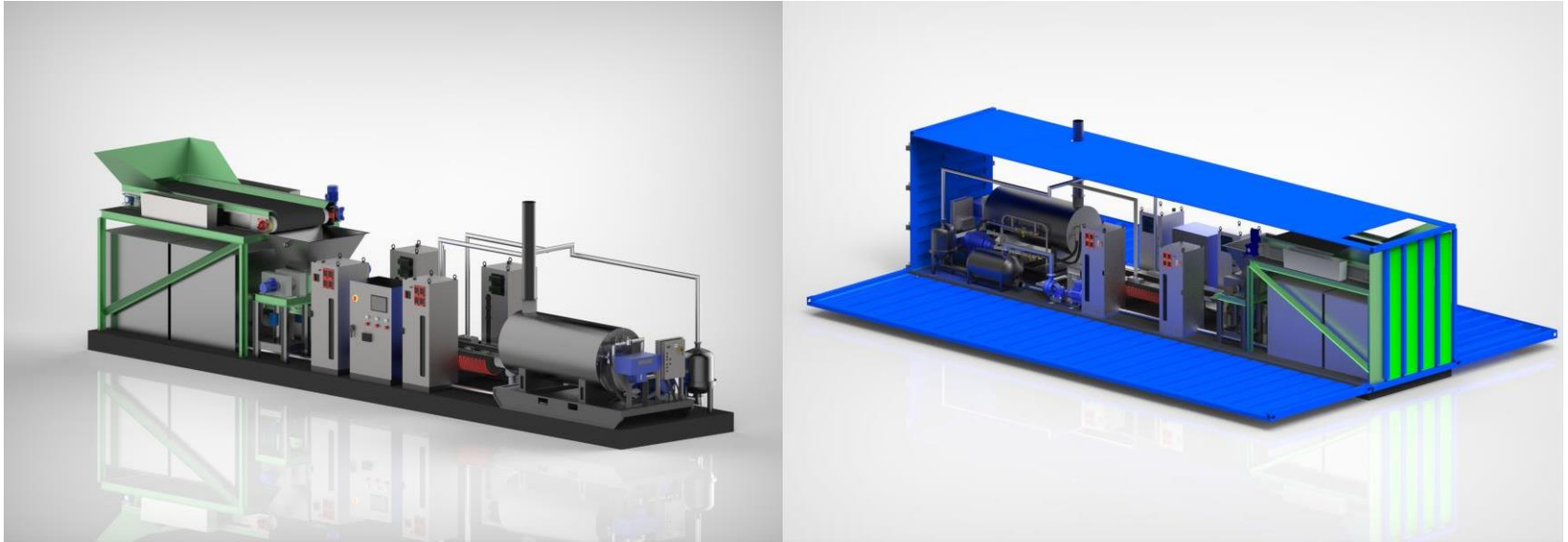
MACHINE & STRUCTURAL DESIGN

TOOLING, AEROSPACE, ROBOTICS & AUTOMOTIVE



CAD :

Selected Projects



SPM Design / Proto Development / Concept to Machine

CAD :

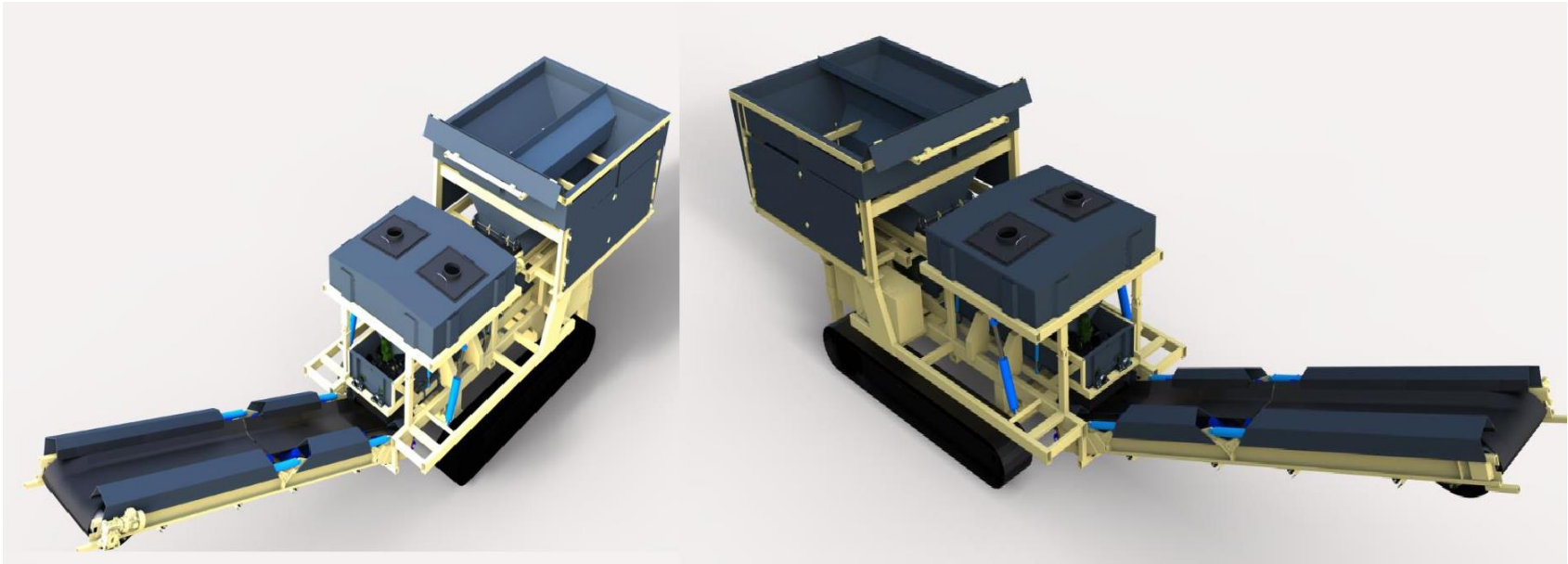
Selected Projects



SPM Design / Proto Development / Concept to Machine

CAD :

Selected Projects



SPM Design / Proto Development / Concept to Machine

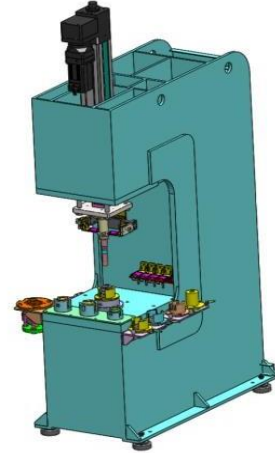
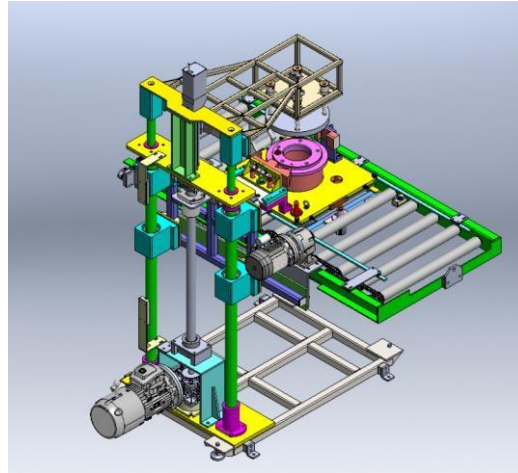
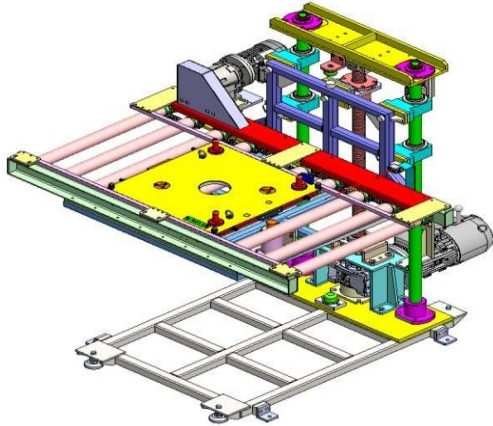
CAD : Selected Projects



Machine Design / Concept design / Design optimization

CAD :

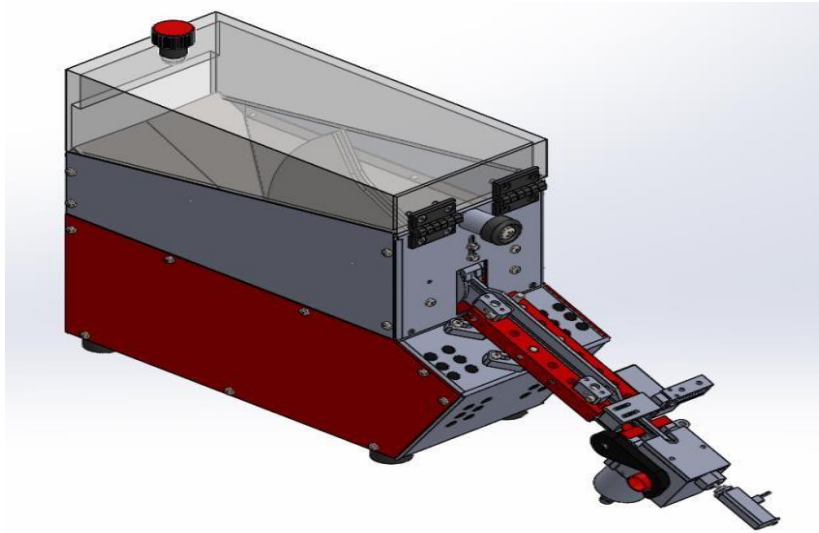
Selected Projects



Assembly line units: Automotive

CAD :

Selected Projects



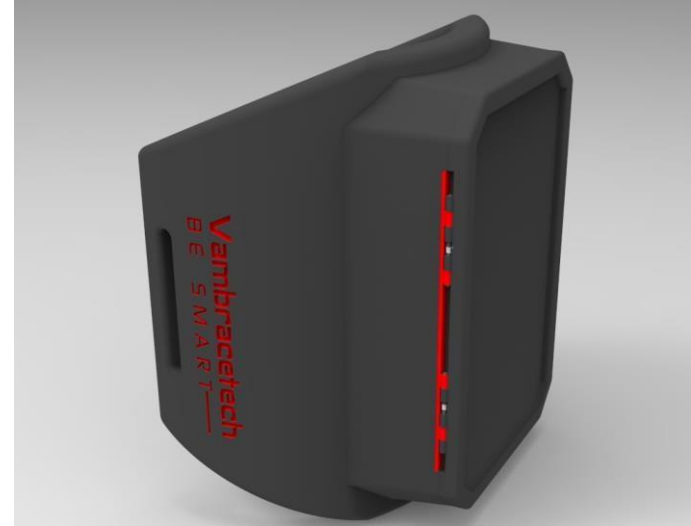
Screw feeder: Aerospace sector



Machine design : For Medical Sector

CAD :

Selected Projects



Machine Design / Concept design / Design optimization

CAD :

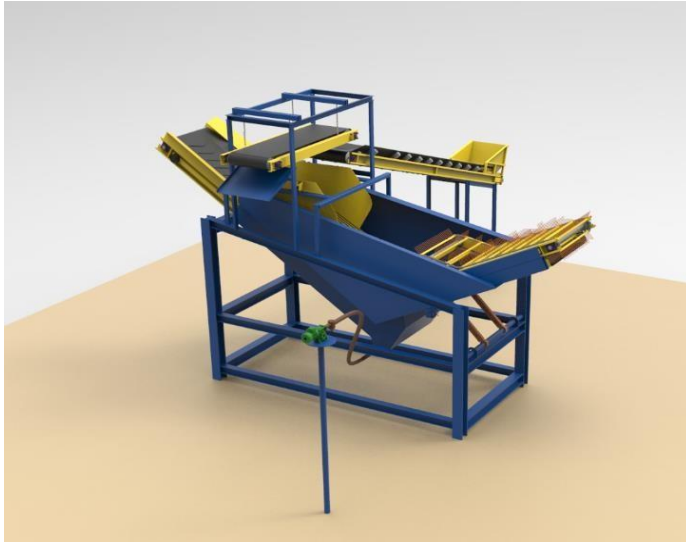
Selected Projects



Machine Design / Concept design / Design optimization

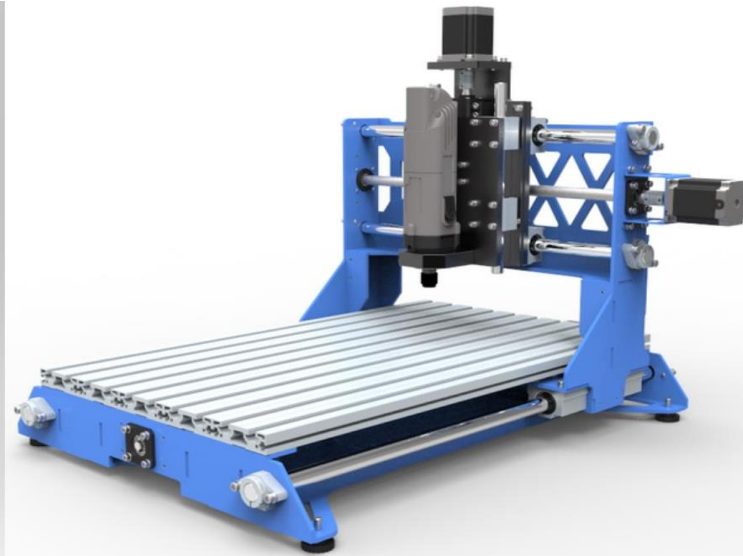
CAD :

Selected Projects



Concept to Engineering Design / Structural Construction

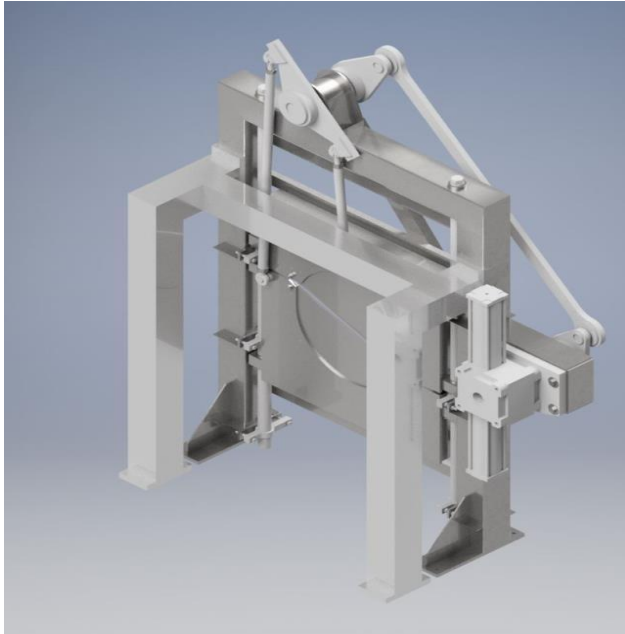
CAD : Selected Projects



SPM Design / Proto Development / Concept to Machine

CAD :

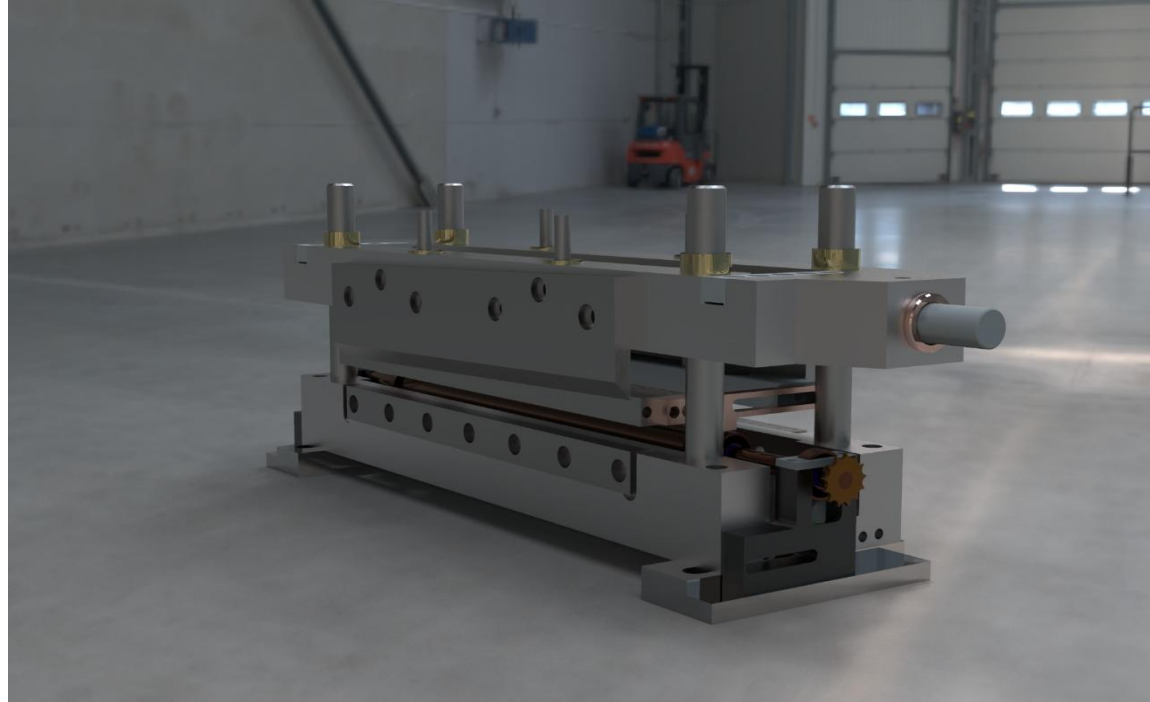
Selected Projects



SPM Design / Proto Development / Concept to Machine

CAD :

Selected Projects



SPM Design / Tool Design

CAD :

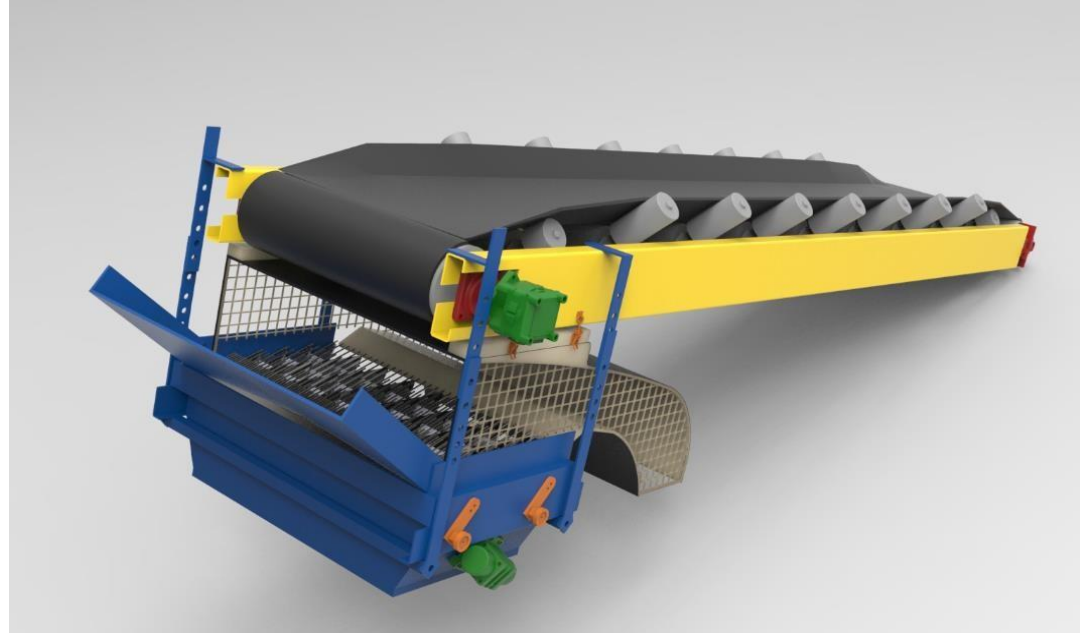
Selected Projects



SPM Design / Proto Development / Concept to Machine

CAD :

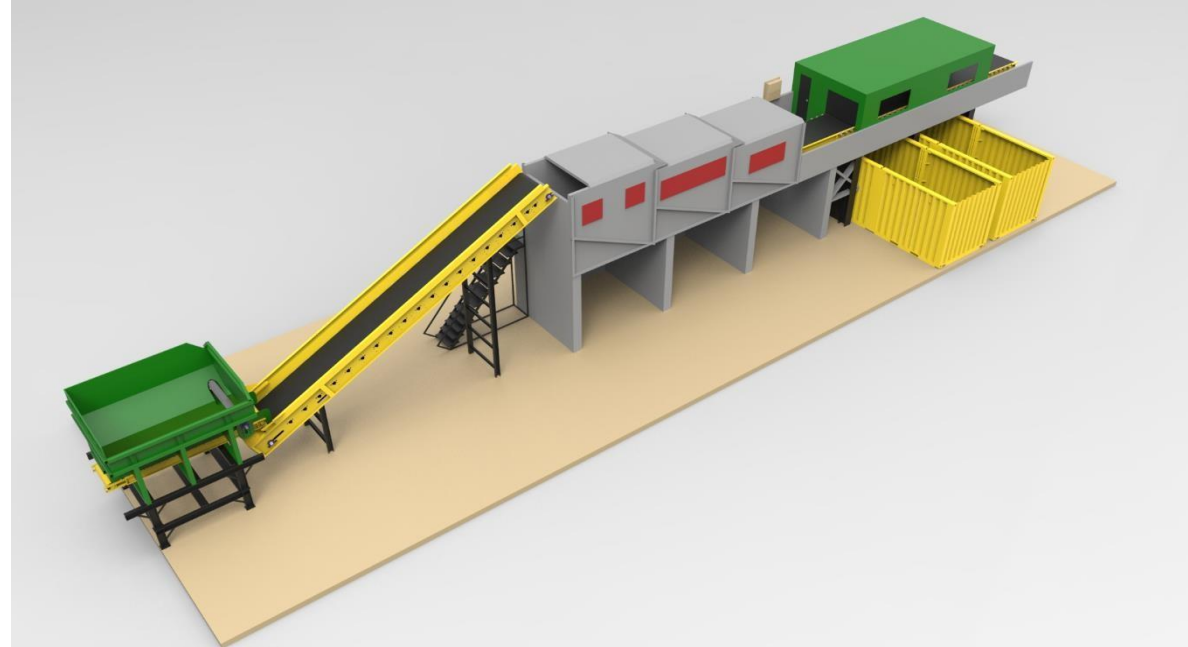
Selected Projects



Concept Modelling / Diagram Modelling / Rendering

CAD :

Selected Projects



Concept Modelling / Diagram Modelling / Rendering

CAD :

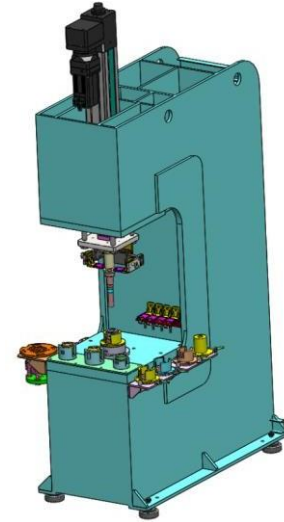
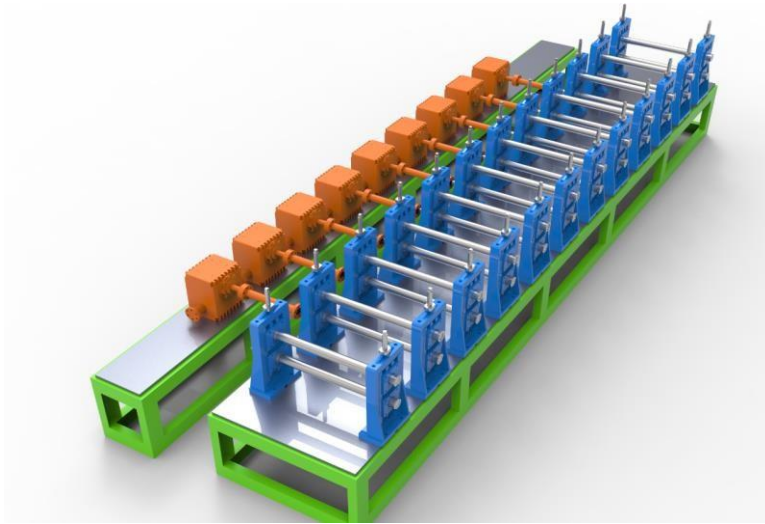
Selected Projects



Concept Modelling / Diagram Modelling / Rendering

CAD :

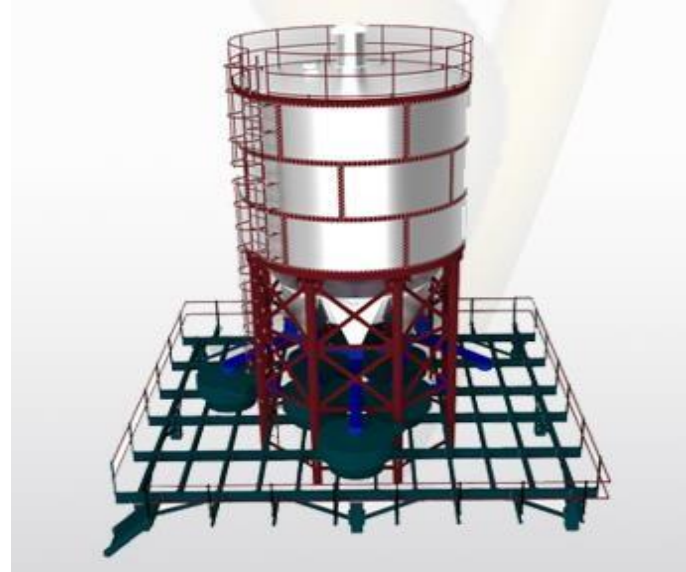
Selected Projects



Concept to Machine Design

CAD :

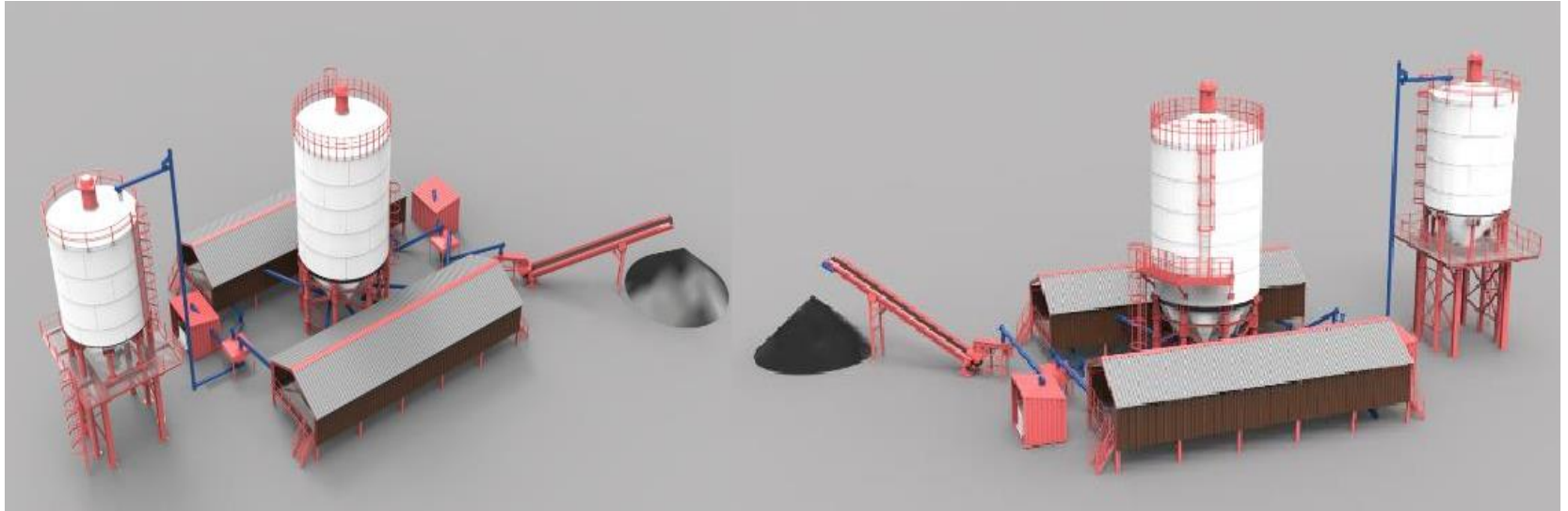
Selected Projects



CAD, concept to detailing. (some of the old projects of Falco)

CAD :

Selected Projects



Concept design and renderings

CAD :

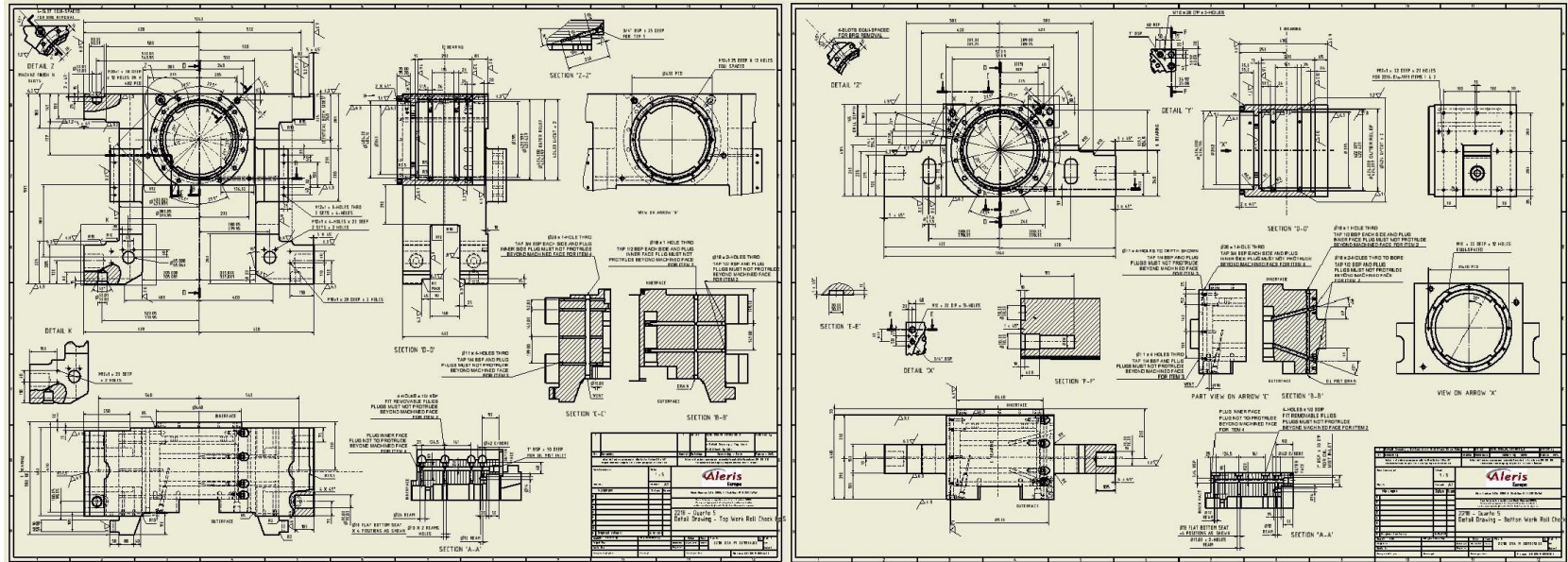
Selected Projects



Rendering

CAD :

Selected Projects



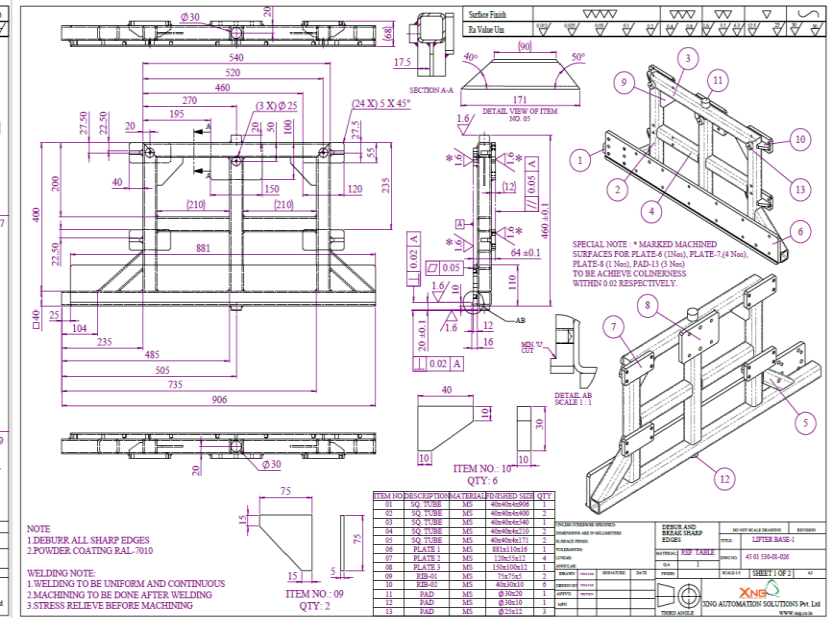
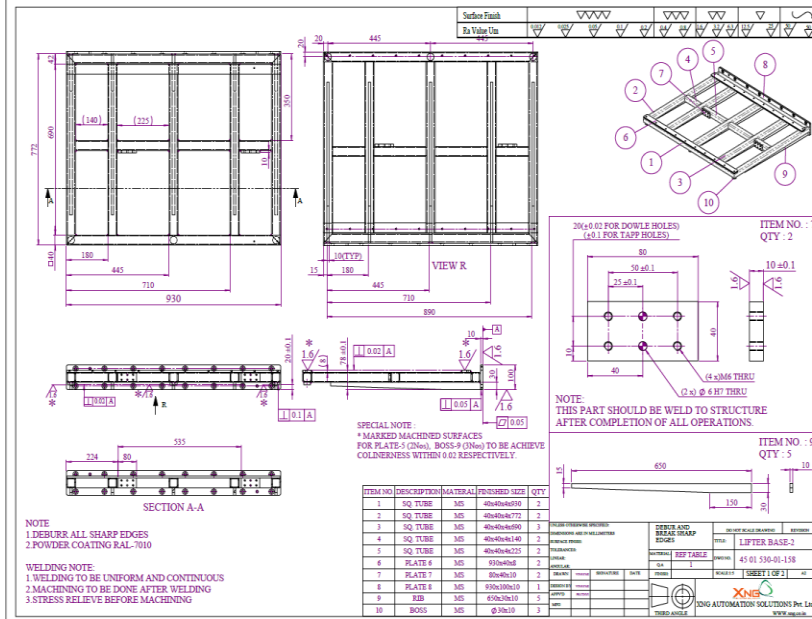
Detailing / Drafting





CAD :

Selected Projects



Detailing / Drafting

Product Design Reverse Engineering / Redesign from Sample

Falco is a thoughtful organization skilled in converting ideas into useful and desirable products. Whether your business is a fresh start-up or large multinational, our product design engineers can help your team develop a new product.

CAD :

Selected Projects



Product Design / Hand sketch to product

CAD :

Selected Projects



Product Design / Hand sketch to product

CAD : Selected Projects



Machine Design / Pug Mixer

CAD :

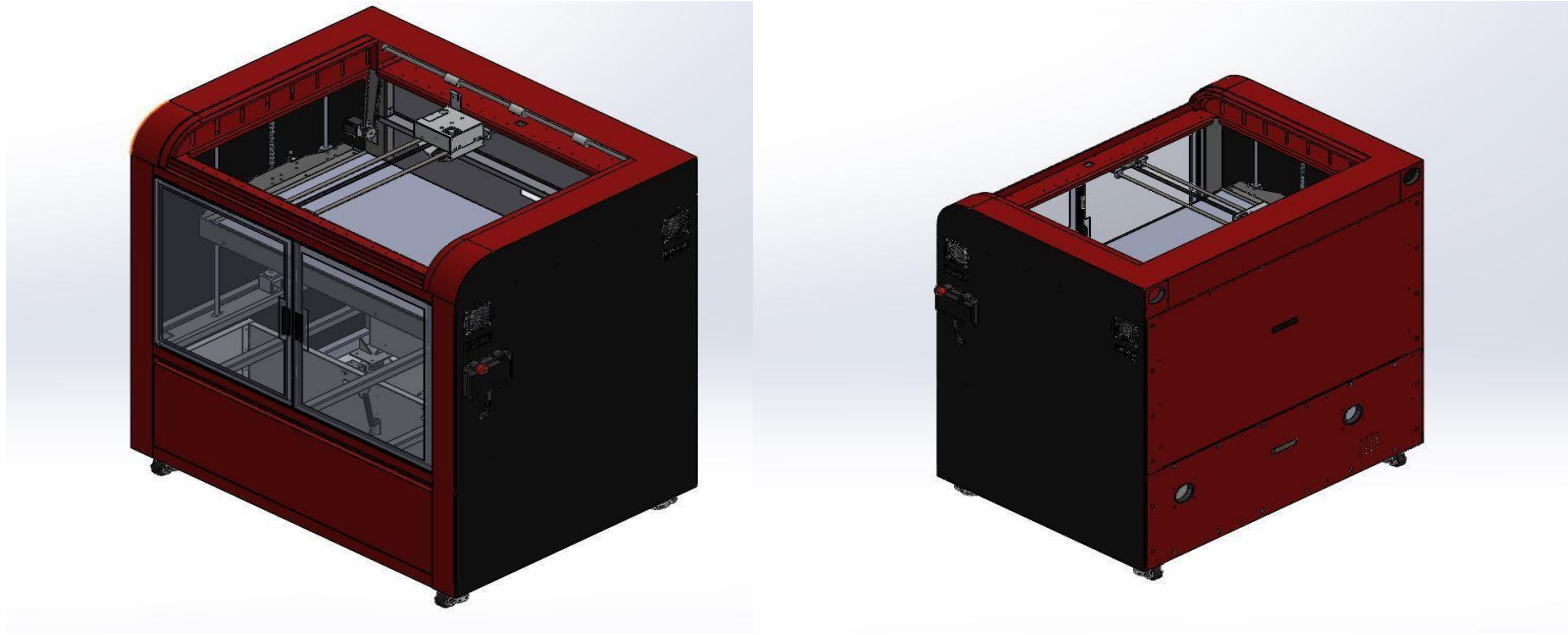
Selected Projects



Reverse engineering / Re design from Sample

CAD :

Selected Projects



Reverse engineering / Re design from Sample

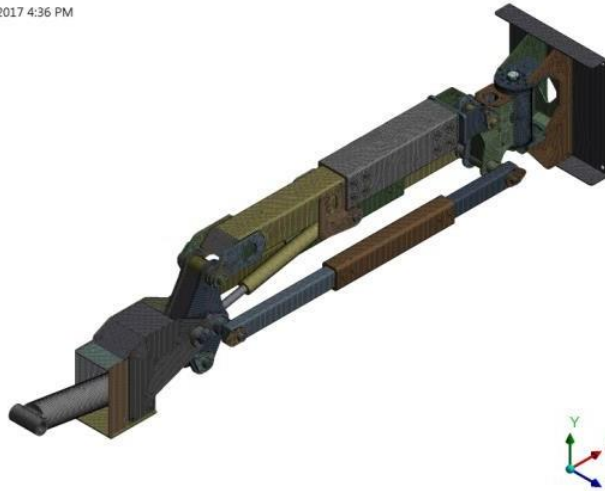
Right Approach in Design Optimization

In Falco we use the best approach with mathematical formulation of a design problem to support selection of the optimal design among many alternatives.

CAD :

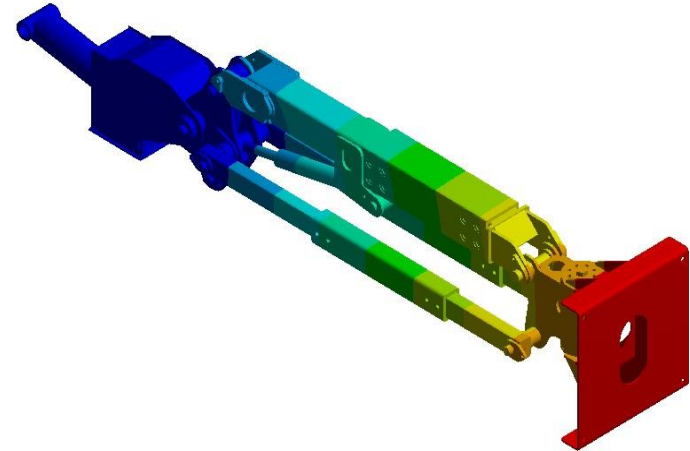
Selected Projects

Mesh
25-09-2017 4:36 PM



Total Deformation
Type: Total Deformation
Unit: in
Time: 3

0.45706 Max
0.40628
0.35549
0.30471
0.25392
0.20314
0.15235
0.10157
0.050785
3.3584e-23 Min

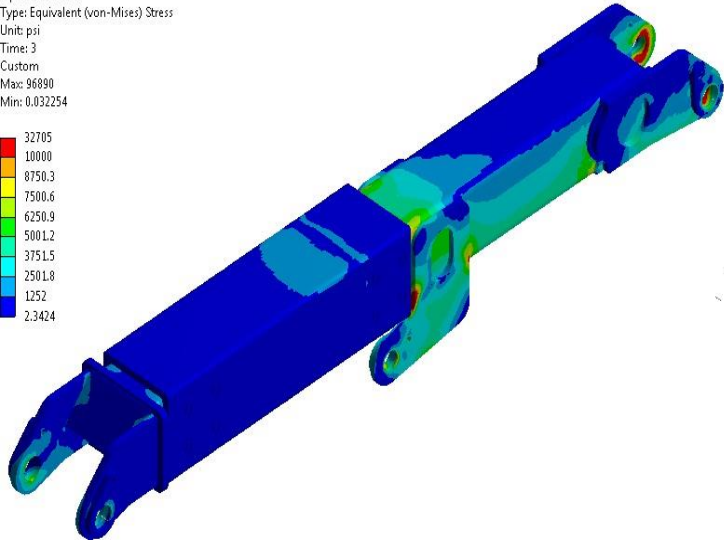
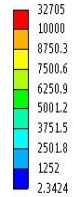


Design Optimization

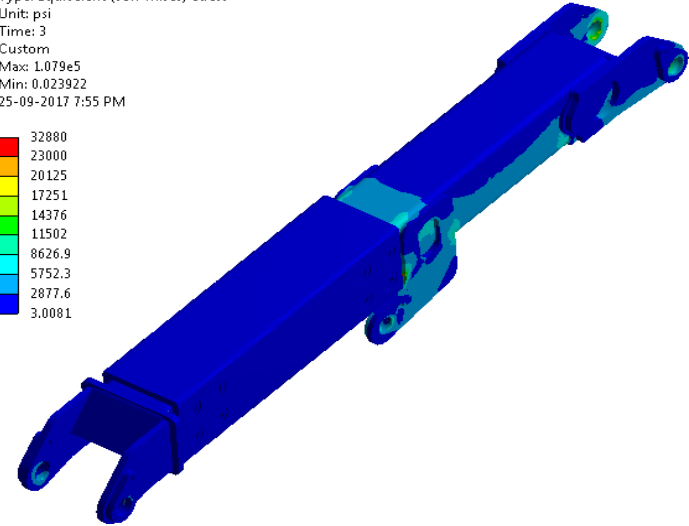
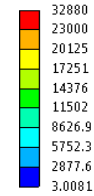
CAD :

Selected Projects

Equivalent Stress
Type: Equivalent (von-Mises) Stress
Unit: psi
Time: 3
Custom
Max: 96890
Min: 0.032254



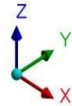
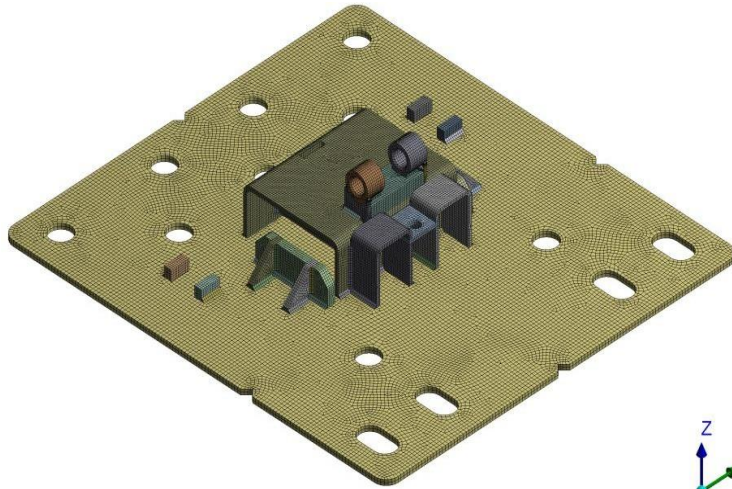
Equivalent Stress
Type: Equivalent (von-Mises) Stress
Unit: psi
Time: 3
Custom
Max: 1.079e5
Min: 0.023922
25-09-2017 7:55 PM



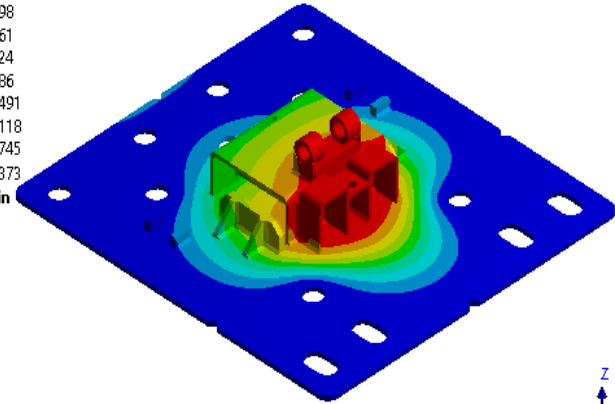
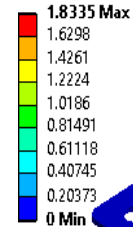
Design Optimization

CAD :

Selected Projects



A: LC1
 Total Deformation
 Type: Total Deformation
 Unit: mm
 Time: 1
 14-02-2018 12:49



Design Optimization



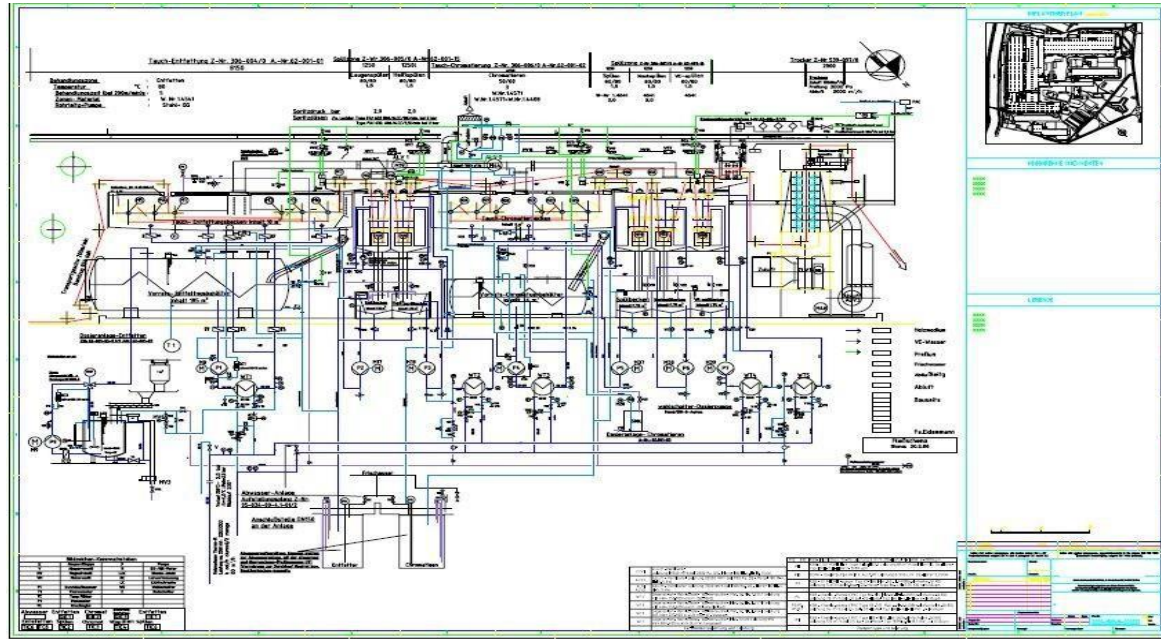
P&ID System Detailing

With Detailed
Drafting and
documentation



CAD :

Selected Projects

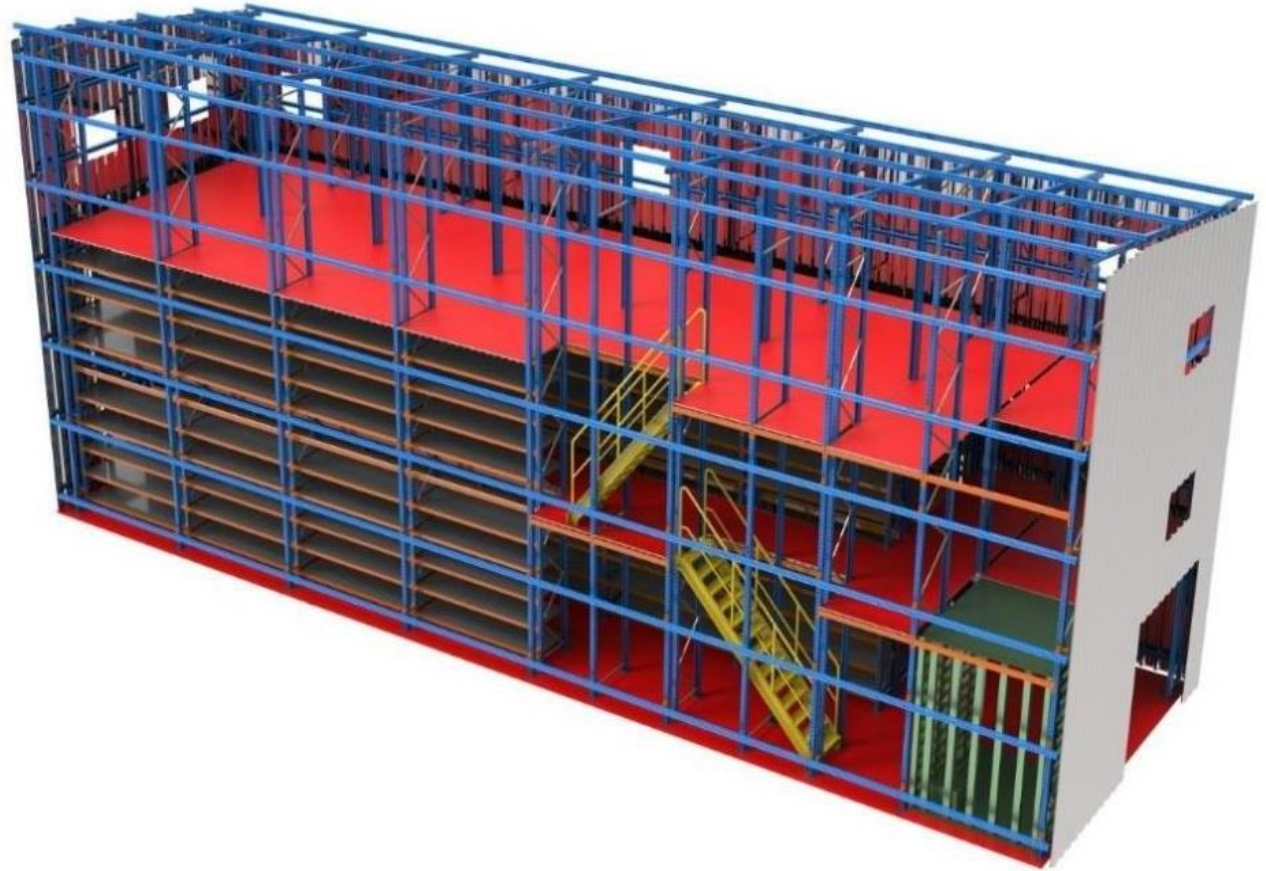


P&ID detailing

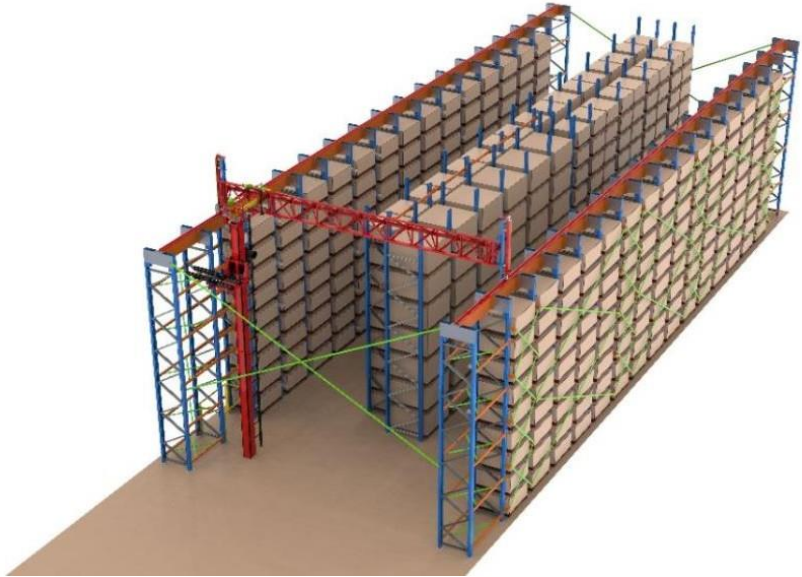
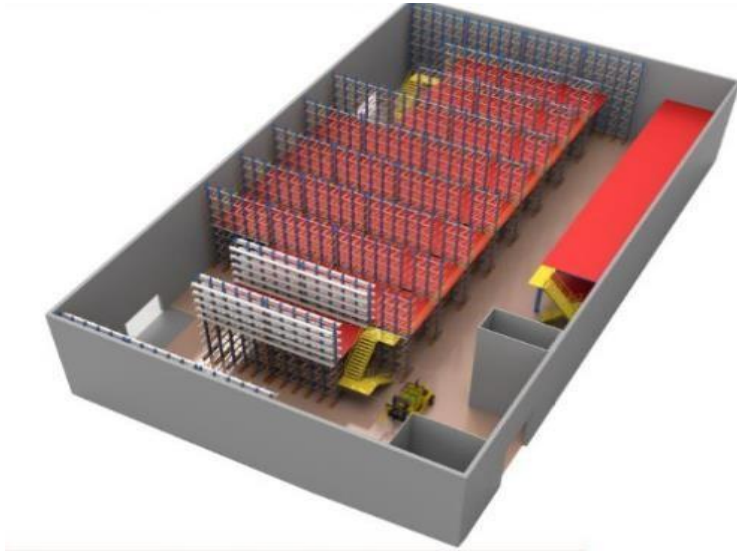


Design of Warehouse System Industrial Layouts

With Automated
Elevation

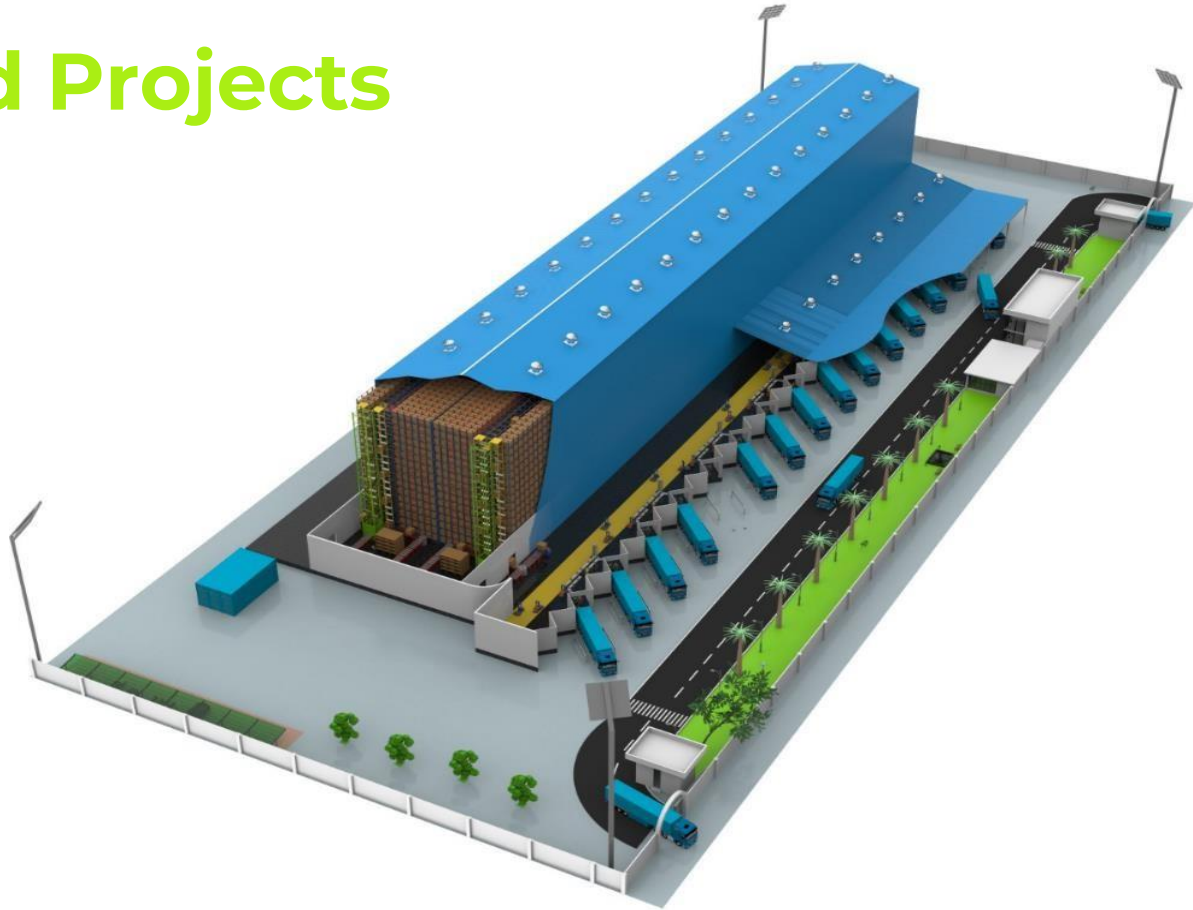


CAD : Selected Projects



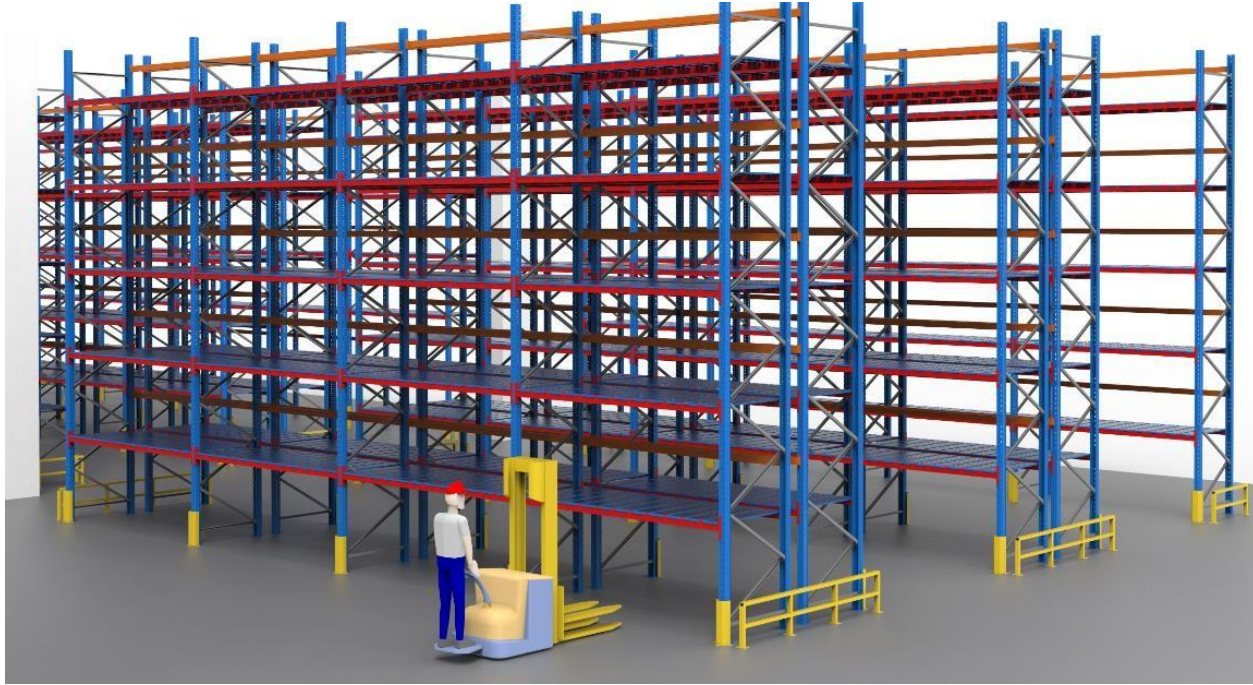
Warehouse Designs

CAD : Selected Projects



Warehouse Designs

CAD : Selected Projects



Warehouse Designs

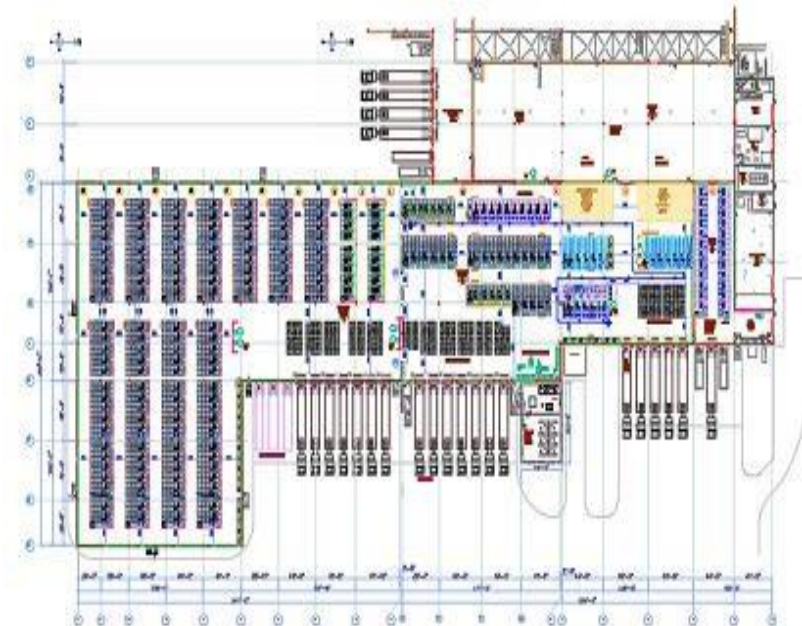
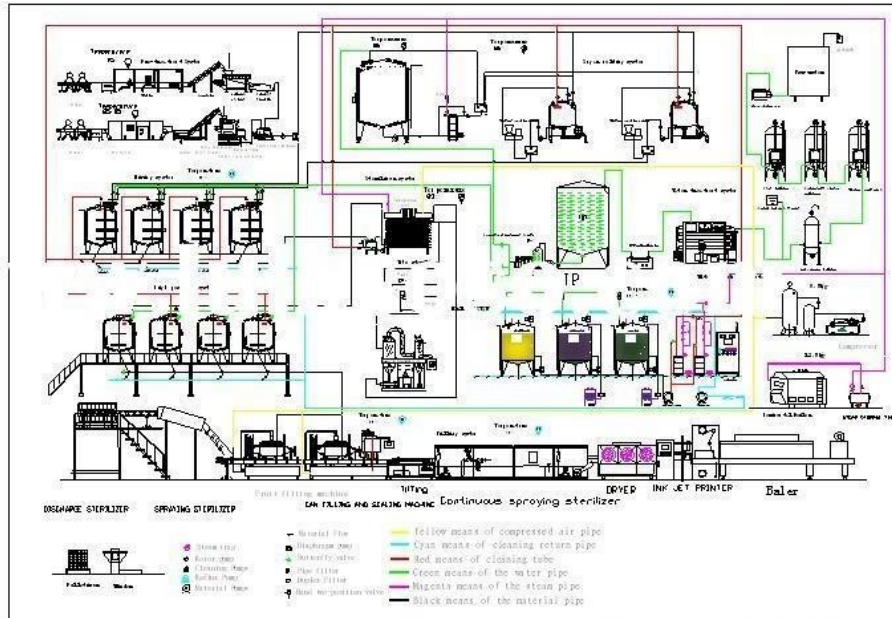
CAD : Selected Projects



Warehouse Designs

CAD :

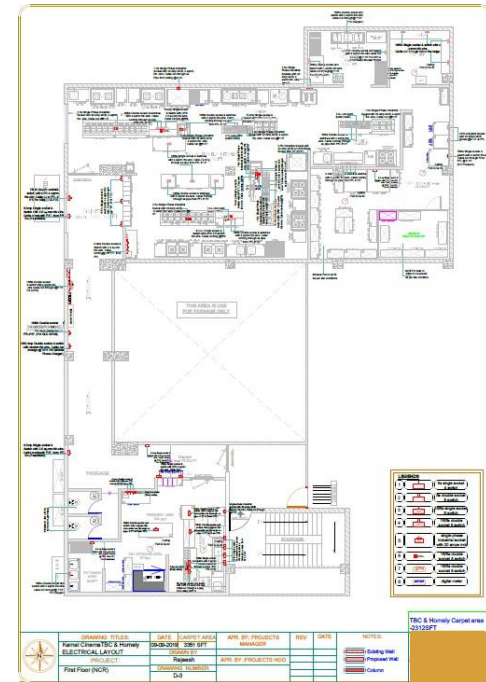
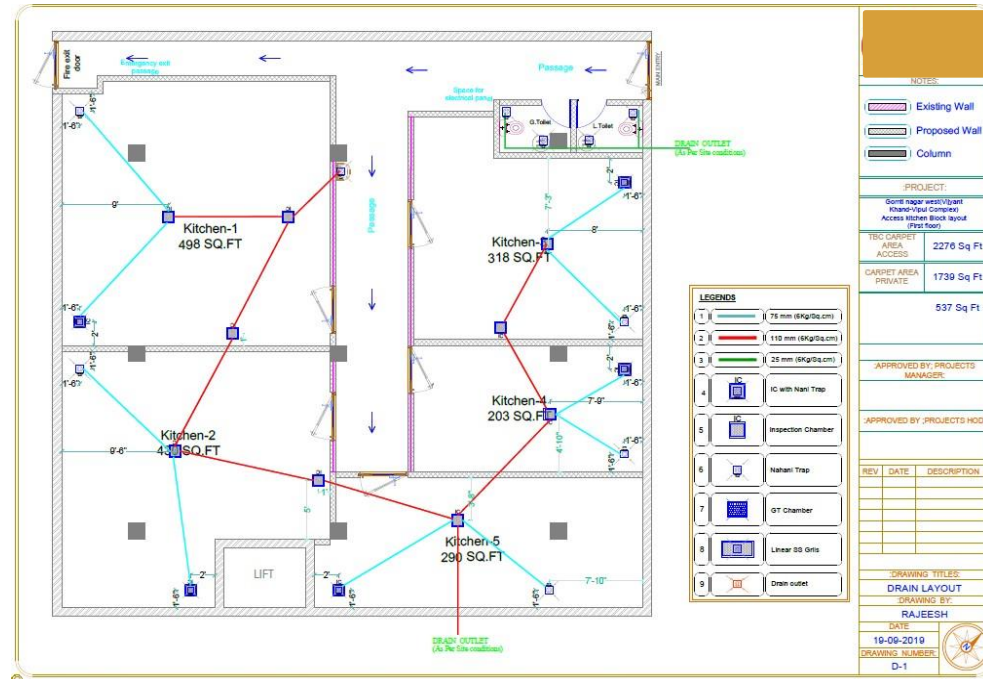
Selected Projects



Layouts

CAD :

Selected Projects



Layouts & Electrical detailing

Machine Design

Developing from concept to stage-by-stage production drawings.

This is an example of a project we have done for a leading earth movement machine manufacturer in St Edmunds, United Kingdom.

The whole project done through digital data managing and concept to end discussion only through Mail, skype and calls.

One of the low-cost designs:

The whole design completed in 65 working days and proto developed in 70 days. This was done at a cost of \$1900 for whole design, from concept to detail drawing for shop floor and quality control standards.



Machine Copying

This was a project for a machine manufacturing company located in Boston , USA.

The task was to copy an initial model from the competitor machine and the new arrangements and modification of complex parts into simple design.

This also done through initial sketches , images from dismantled machines and digital data management.



Cost effective design:

The whole design completed in 42 working .

The components designed with low-cost manufacturability, Easy availability of standard parts and light weight design

Project Planning And Design

Falco's precise feasibility studies and pre-design planning maximize efficiency and enlarge quality, sustainability and adaptability. From project optimization to process life-cycle cost analysis, our consulting services enhance project outcomes.



It is Just Not Only Design

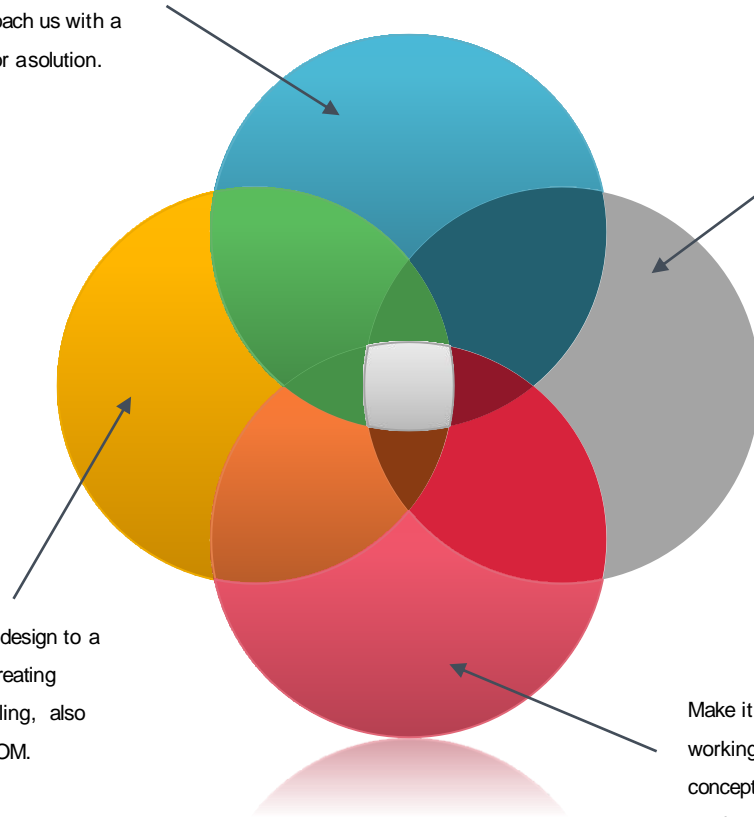




Phases Of Design

Understanding the requirement of the customer who approach us with a problem, or asolution.

Study on feasibility, basic concept working, nature of preform and



Develop the concept design to a workable model by creating components and detailing, also preform a detailed BOM.

Make it visible, show it working to the concept. Enlarge the study

Machine Design



Customer List (Selected)



Thanks!



You can reach at
contact@falcoengineering.com

Or

vijay.sn@falcoengineering.com

Note: All the CAD images used in the presentation are belongs to Falco engineering.
Subjected to copyright.