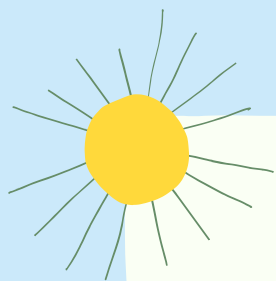


DEVELOPMENTAL MILESTONES



6 TO 12 MONTHS

RECEPTIVE

Responds to their name
Responds to 'no'
Turns their head to look for a sound
Shows anticipation for what will happen next

EXPRESSIVE

Use gestures (e.g. pointing to what they want)
Copy actions (e.g. waving 'bye')
Babble or vocalise sounds (e.g. ooo)
Combine sounds to make syllables (e.g. baba)
Seek attention from others

1 TO 2 YEARS

RECEPTIVE

Points to pictures in books
Identifies common objects and body parts
Responds to 'No' or 'Stop'
Understands simple instructions (e.g. 'come here', 'show me')

EXPRESSIVE

First words!
Copies actions, sounds and words
Uses words to ask for objects or attention
Uses 50-200 words by 2 years of age
Combines 2 words together

2 TO 3 YEARS

RECEPTIVE

Understands simple instructions with: location (e.g. on, off, under), description (e.g. big/little, same/different) and quantity (e.g. more, empty, one)
Understands 'what' and 'where' questions

EXPRESSIVE

Combines 3-4 words into a sentence
Asks questions (e.g. 'What is it?')
Answers simple 'what' and 'where' questions
Answers 'yes' or 'no'

3 TO 3.5 YEARS

RECEPTIVE

Understands 'who' questions
Understands verbs (e.g. run, kick, swing)
Identifies colours and describing words
Understands negatives (e.g. 'It's not there')

EXPRESSIVE

Uses over 800 words
Answers 'who', 'what' and 'where' questions
Puts 3-5 words together to form a sentence

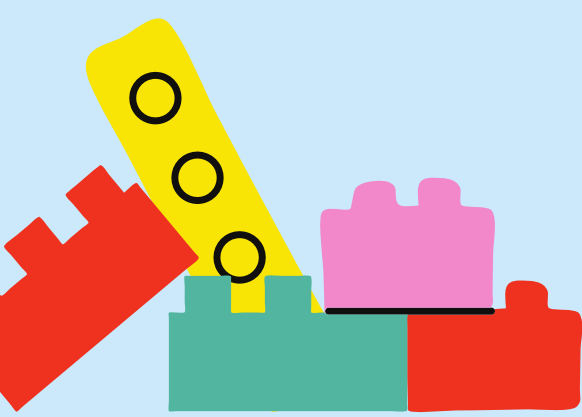
3.5 TO 4 YEARS

RECEPTIVE

Beginning to understand 'why' questions
Understands most of what you say to them or ask

EXPRESSIVE

Uses 1000-1500 words
Uses pronouns (e.g. he, she, they)
Starting to use conjunctions (e.g. 'because', 'and')
Tells stories about their day



Stepping Stones
SPEECH PATHOLOGY

