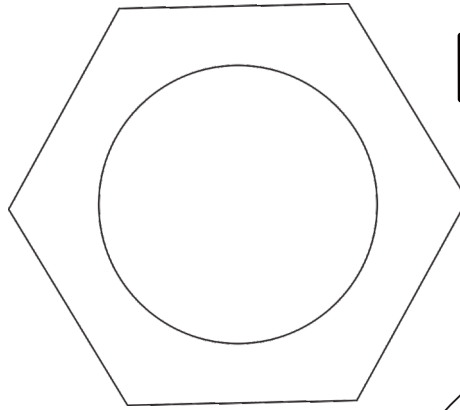




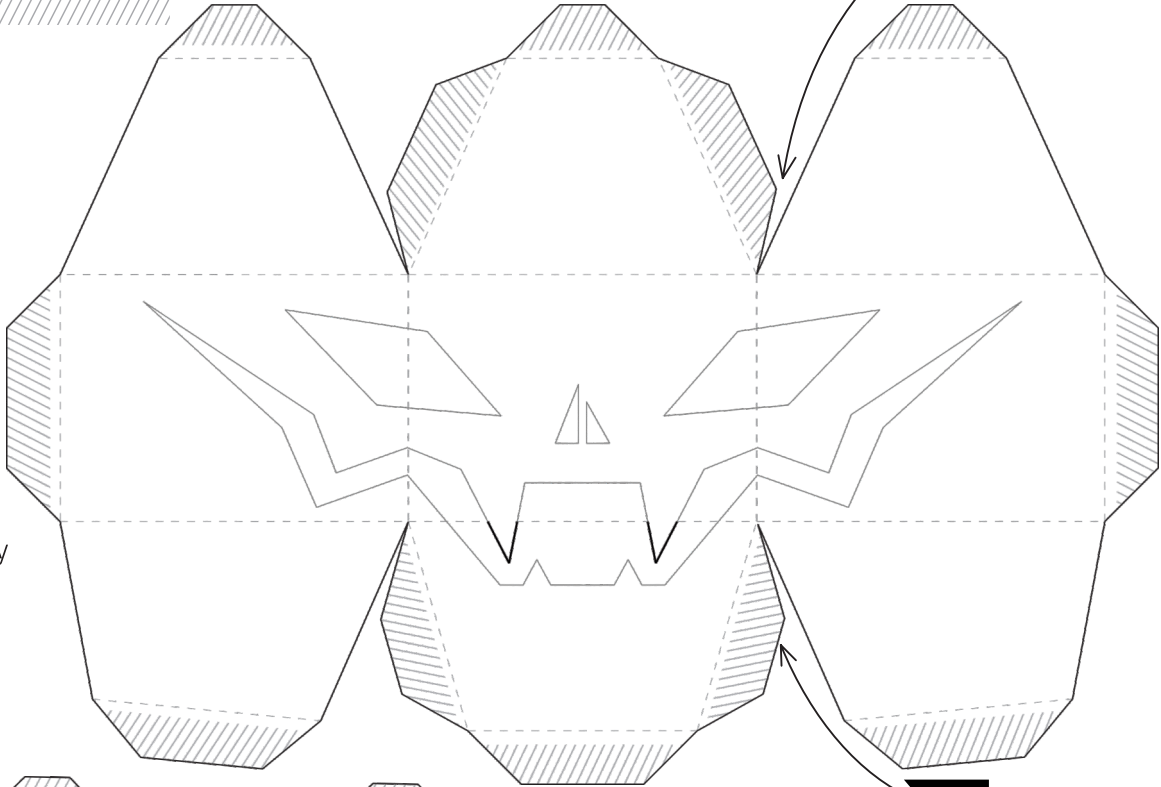
CUT: _____
FOLD: - - - - -
CUT OR PAINT: _____
GLUE: // // // // //

base



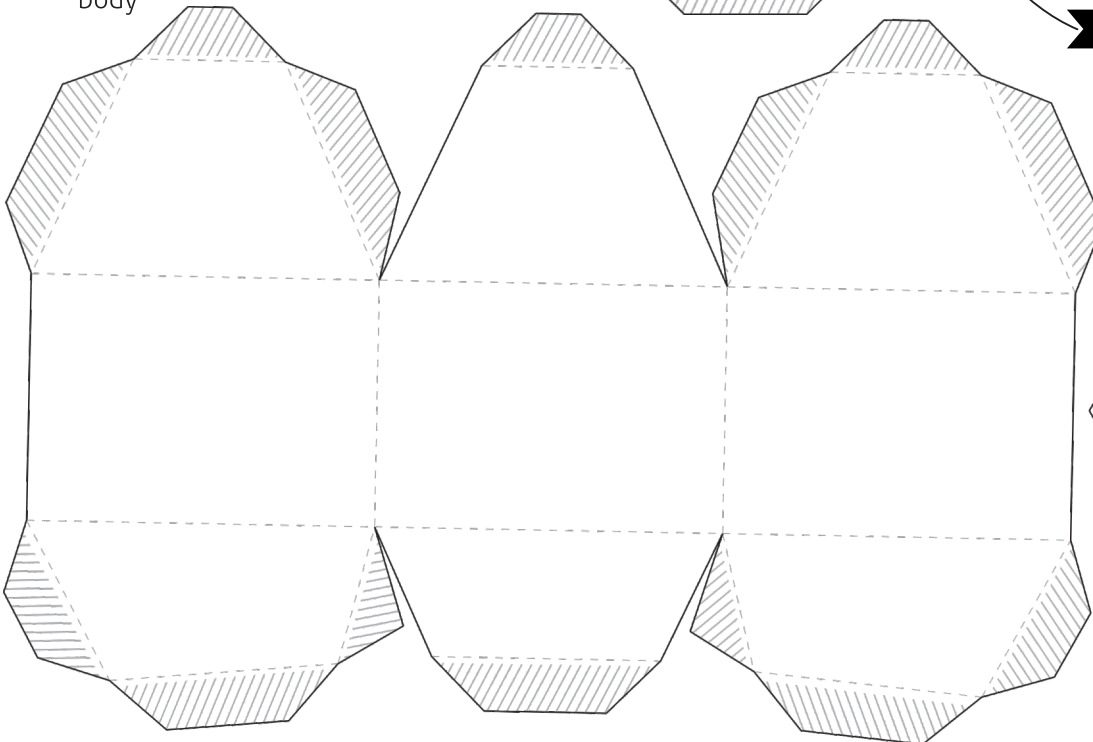
TIP: the eyes, mouth and pumpkin nose can be painted black or cut out.

body

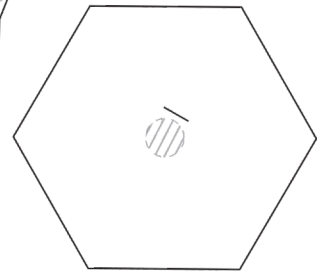


TIP: if you paint the pumpkin's face, make a cut with a knife in the thickest line teeth and do not fold.

body



top



Glue the stem to inner circle.
Cut the line full and fit the folded leaf.



**Geovana
Martinello**
www.geovanamartinello.com

Cut: _____

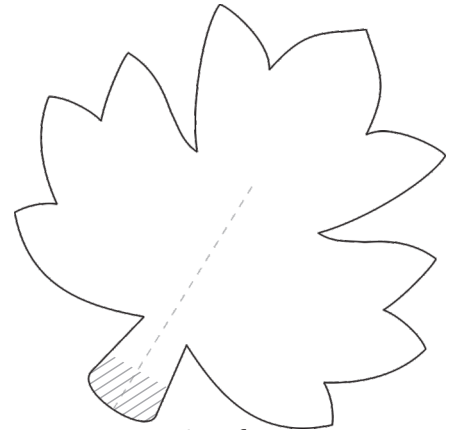
Fold: - - - - -

Glue: // // // // //

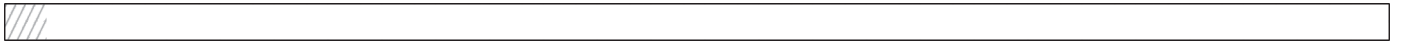
You can color or customize with markers and colored pencils, or print each page on a different paper color.



With this piece, make a tube to be the stem of the pumpkin. Glue the tube to the top circle.



Leaf



Make a coiled 'spring' to place next to the pumpkin's stem.