



8 //

Dev Heights

Swawlambi Nagar



Luxury you truly Deserve

SURROUND YOURSELF WITH ELEGANCE

Warm natural light floods the interiors, and breathes life into your living room with maximum ventilation.

Widely spaced windows delightfully let the outdoors in and enhance the views. There's a palette of fine features and finishes proving that a true perfectionist was behind planning every amenity you see around you.

A space where family comes together



8 //
Dev Heights
Swawlambi Nagar



*Come Home to
Class and Comfort*



8 //
Dev Heights
Swawlambi Nagar



8 //
Dev Heights
Swawlambi Nagar

3 BHK APARTMENTS FIRST & SECOND FLOOR PLAN

DRAWING ROOM
14'X10'3"

KITCHEN + DINING
8'X13'3"

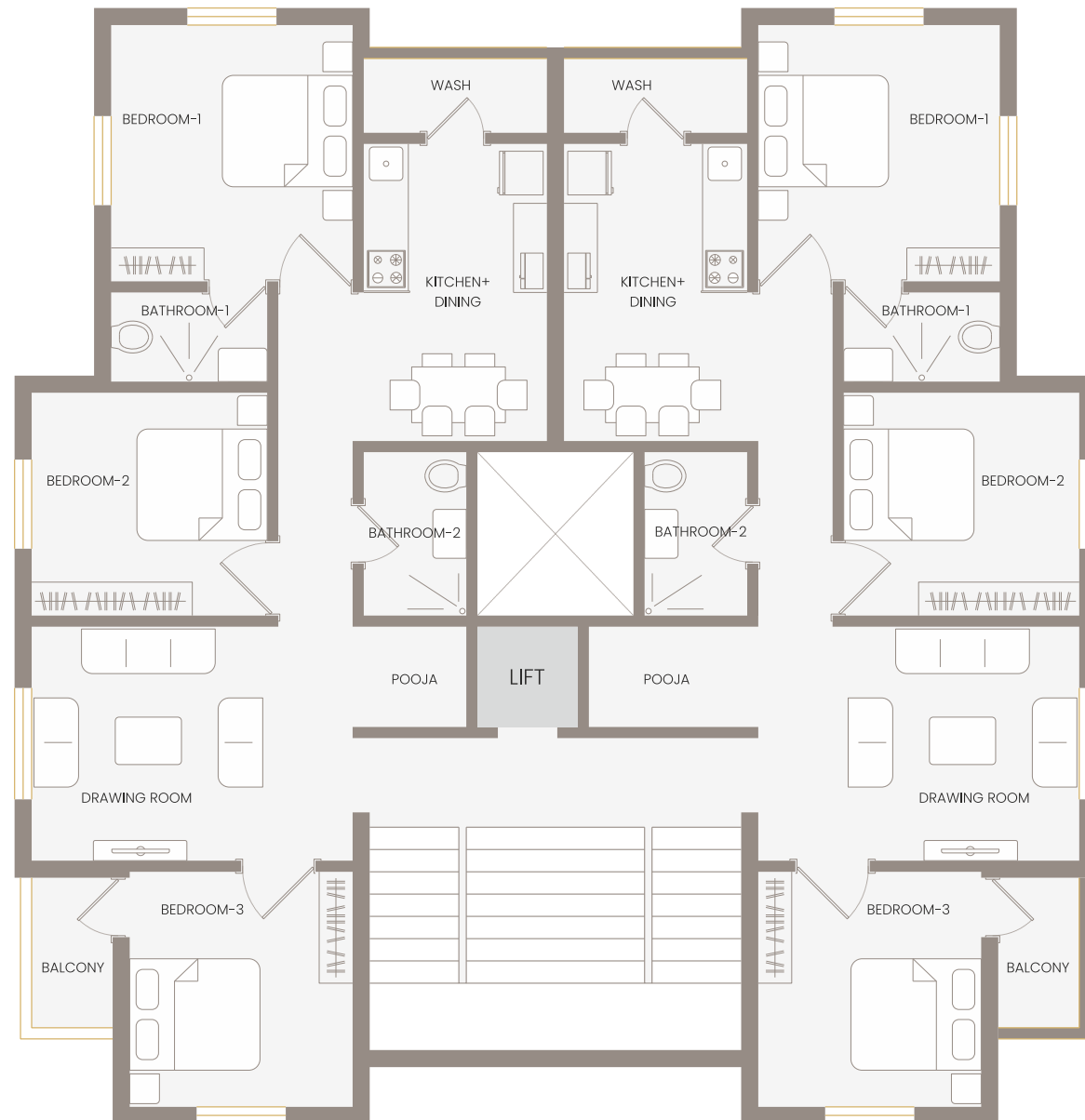
BEDROOM-1
10'6"X11'3"

BEDROOM-2
11'X10'3"

BEDROOM-3
10'X10'3"

BATHROOM-1
7'3"X4'

BATHROOM-2
7'X4'



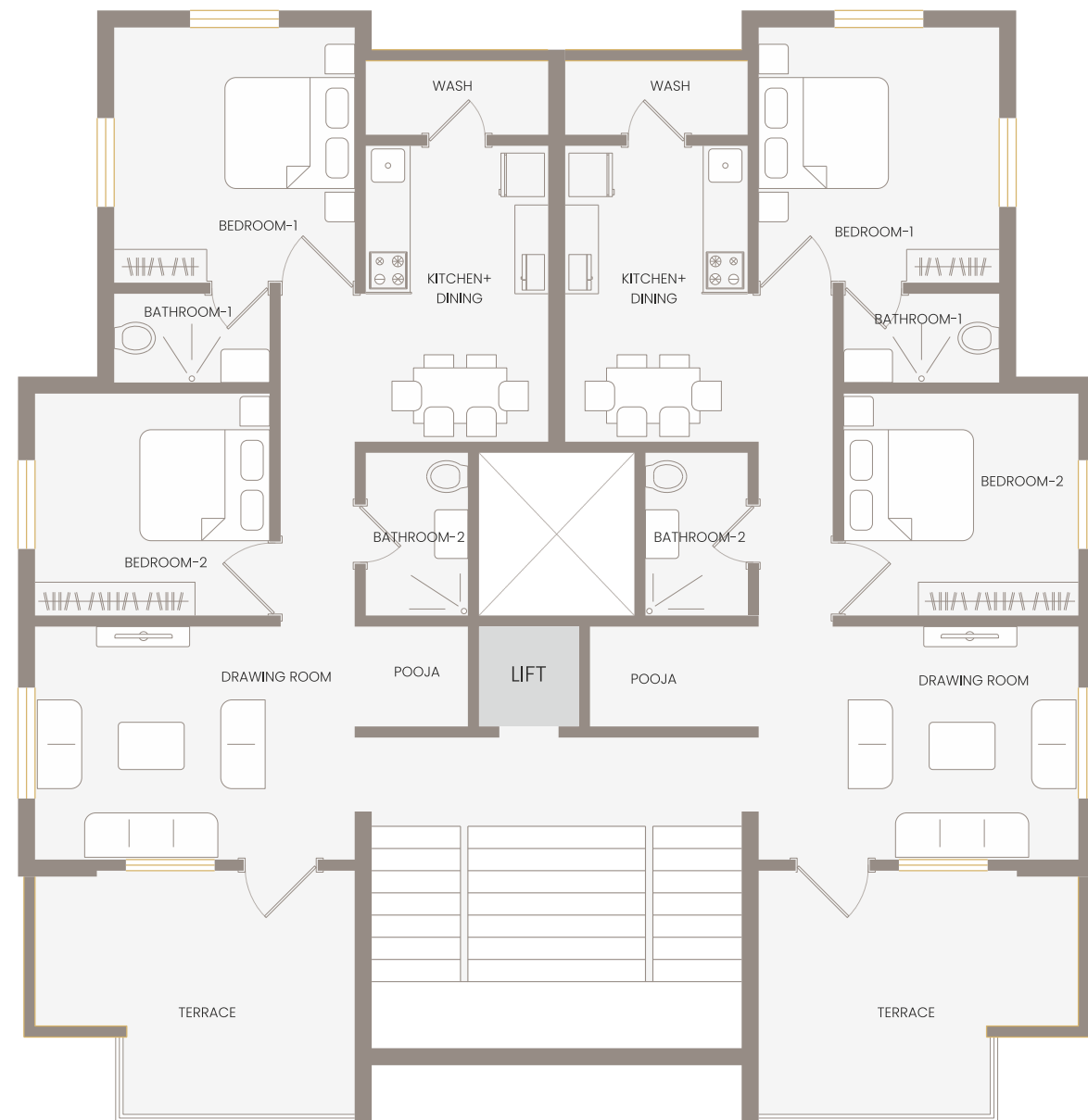
3 BHK APARTMENTS FIRST & SECOND FLOOR PLAN



8 //
Dev Heights
Swawlambi Nagar



8 //
Dev Heights
Swawlambi Nagar



2 BHK APARTMENTS THIRD FLOOR PLAN

DRAWING ROOM
14'X10'3"

KITCHEN + DINING
8'X13'3"

BEDROOM-1
10'6"X11'3"

BEDROOM-2
11'X10'3"

WASH

TERRACE

BATHROOM-1
7'3"X4'

BATHROOM-2
7'X4'



2 BHK APARTMENTS THIRD FLOOR PLAN



The next level of living.



you deserve a home that complements your lifestyle. A home with the perfect balance of splendour, space and comfort. Where everything you desire is just a short walk away. A home in the lap of nature, full of peace and tranquility.



A quick look at the specification

Structure

- Trebeated reinforced concrete structure as per structural & fire norms of National Building code 2015.

Brickwork

- Terracotta bricks. External walls: 230 mm thick. Internal walls: 150 mm thick

Tile Work

- Double charged vitrified tiles of 800 x 800mm in the carpet areas.
- Antiskid tiles in the Bathroom, Balcony & Kitchen wash.
- 1200x600 mm tiles dado in bathroom up to full height (false ceiling)
- Full height dado over kitchen counter top and wash area.

Stonework

- All windows and balcony sills & jambs are provided with premium polished granite.
- Kitchen counter-top shall be built in Quartz.

Waterproofing

- **Multi stage waterproofing:** grouting, screeding, meshwork, tile-work & neat finish in Bathrooms, Balconies, Utility Areas and Common Terrace.

Doors

- **Main door:** 2400 mm high & 1200 mm wide pinewood door framed with paneling and lined with melamine polish over natural veneer, along with central locking systems.
- **Bedroom Doors:** 900 mm wide pinewood doors framed with paneling and lined with melamine polish over natural veneer, along with central locking systems.
- **Balcony Doors:** Pinewood doors with waterproof laminate on both sides hoisted on premium cement frames.
- **Bathroom Doors:** Pinewood doors with waterproof laminate on inner side and veneer on outer side, hoisted on granite frames.

Windows

- Living room and bedrooms with Three Tracked Aluminium Windows, powder coated in white color. One panel with mosquito net and two panels with glass.
- Bathroom windows with louvers and exhaust fan.

Kitchen

- Modular kitchen with wooden cabinets (overhead and under the

counter) with stainless steel baskets and a stainless-steel sink.

- Complementary chimney to be provided in all kitchens.

Sanitary and CP Fittings

- A combination of JAQUAR & CERA branded sanitary & CP fillings.
- Wall hung WCs with high flow Metro flush.
- High flow Diverter system for spout & shower.
- High flow Diverter for hot and cold water in the basins.

Elevator

- Thyssenkrupp branded six passenger elevator with auto-doors & automatic rescue device (ARD).All doors & car shall be hairline stainless steel finish.

Ceiling

- Complete designer false ceiling in Plaster of Paris including Living room, Bedrooms, Bathrooms, Balcony, Kitchen, Elevator Lobby, Parking.

Paint work

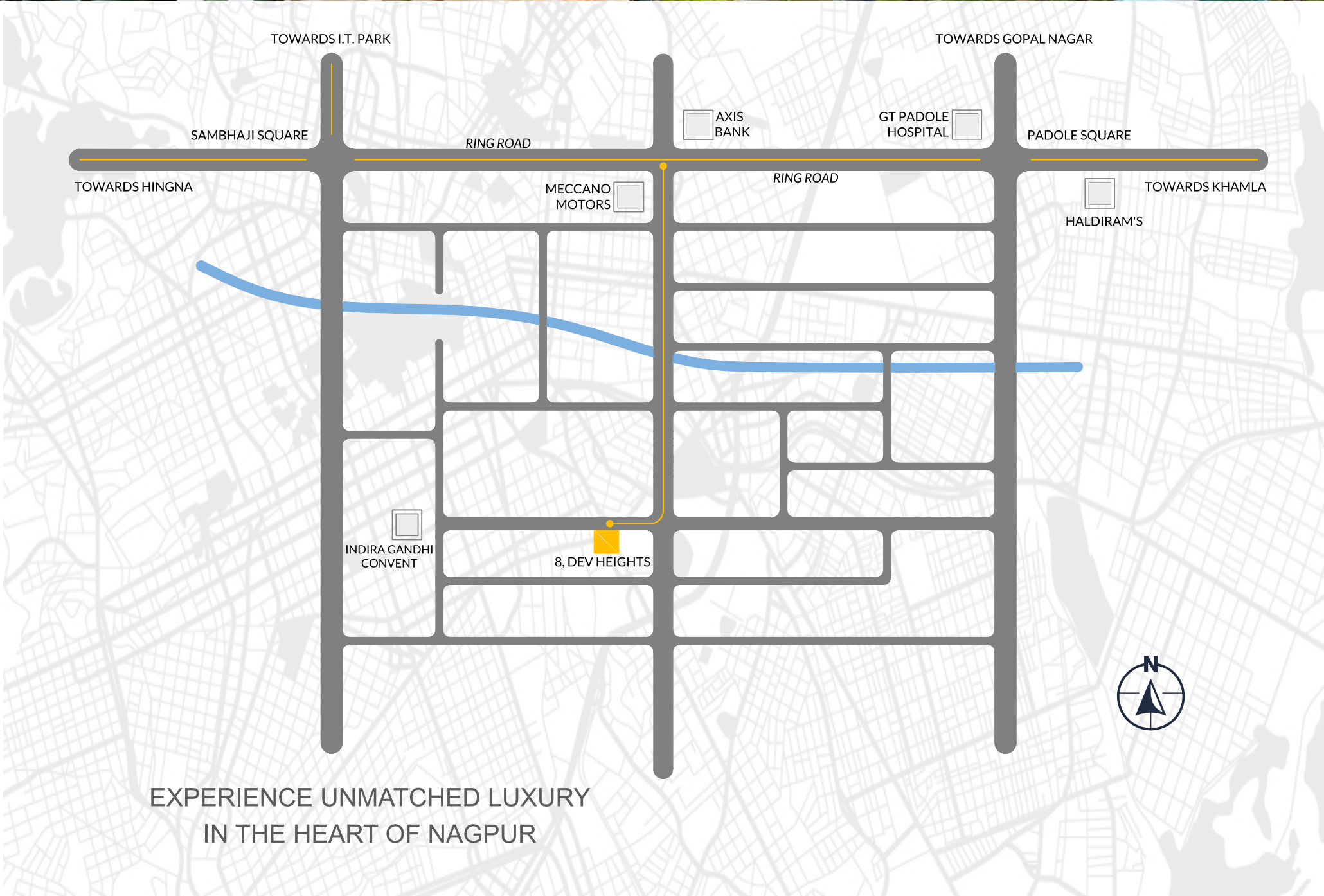
- All internal surfaces are painted with THREE coats of premium plastic paint of raindrop white shade post three coats of putting and one coat of primer.
- All external surfaces shall be painted with multiple coats of Ultima weatherproof paint in accordance with elevation.

Electrification

- RR kabel branded, Fire-Resistant cables used in concealed cabling of the building.
- Branded LED lights in combination of white & warm white shall be provided with cove lights, accent lights and fans.
- All switches shall be branded and modular fittings.
- Provision for AC, Heater, water heater, Microwaves, Television DTH connection mixer grinder & inverter shall also be there.

Miscellaneous

- Seating arrangement with a swing on the ground floor facing the landscape and plantation with provision of modern lights, fan & furniture
- Automatic water level sensor and controller for rising water
- Glass railing in balconies



A project by

DEV//ASSOCIATES

www.devheights.in
hello.devassociates@gmail.com
53, Madhav Nagar, Nagpur

Ajay Jaiswal +91 9850387790
Deovrat Jaiswal +91 8378811188
