

E-Z Style

FURNITURE

ASSEMBLY INSTRUCTIONS AND PARTS IDENTIFICATION

MODEL # 1911EZ-36NE

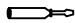



WALL SHELF

Thank you for purchasing this quality product. Be sure to check all packing material carefully for small parts that may have come loose inside the carton during shipment.

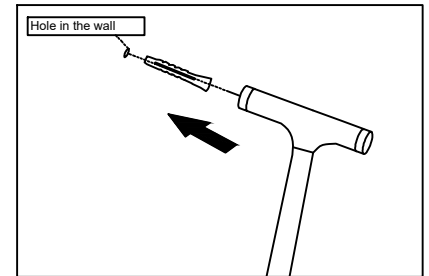
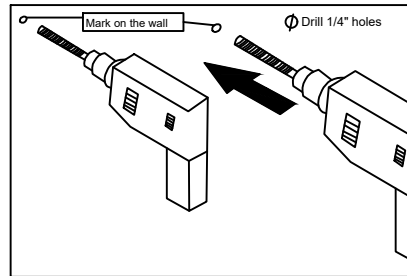
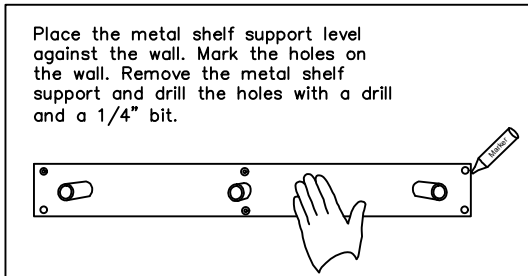
Key Parts

No	Code	Qty	Description
1	1911EZ-36NE	1 pc	Wooden shelf
2	1911EZ-36NE	1 pc	Shelf support

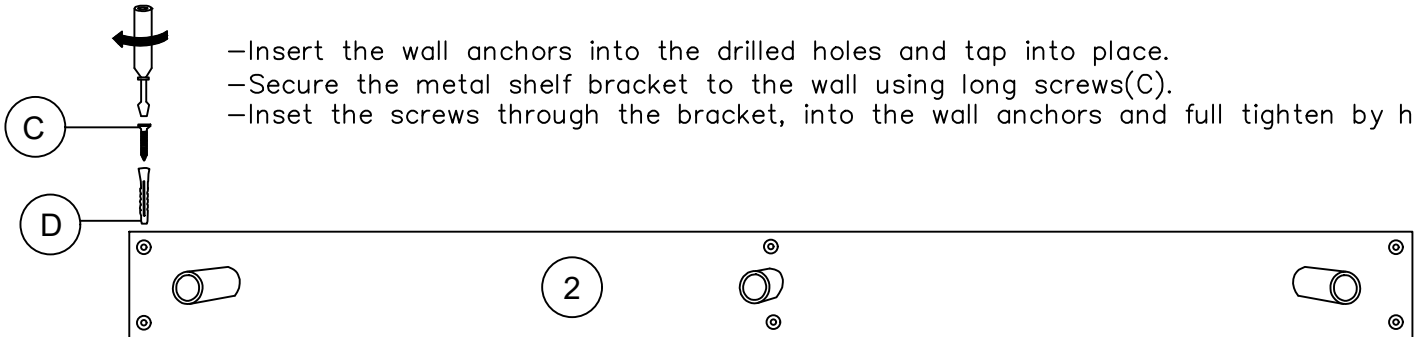
Hardware kit (1911EZ-36NE)

No	Description	Qty
A	 Screwdriver	1 pc
B	 Screws	6 pcs
C	 Wall screws (2" long)	6 pcs
D	 Wall anchors	6 pcs

***NOT TO BE USED TO SUPPORT A TV**
WEIGHT LIMIT 25 POUNDS



- Insert the wall anchors into the drilled holes and tap into place.
- Secure the metal shelf bracket to the wall using long screws(C).
- Inset the screws through the bracket, into the wall anchors and full tighten by hand.



- Insert the shelf by lining up the holes to the connecting rods on the bracket.
- Make sure the holes in shelf face down.
- Secure the shelf to the bracket using the short screws(B) and hand tighten with the screwdriver.

