

# SUPER-8-AUTEUR

## PERSISTENT SHADOWS TOUR PACK





The Leather Bottle, a worn-down pub, with torn up carpets, peeling wallpapers, and chairs that look like they'd fall apart if you stared at them hard enough. A thick cloud of cigarette smoke lingers in the air, you get used to it. But the Leather Bottle was a place of community for the people of Betteshanger, an escape from the chaos of the world outside. Join Paul, George, Sammy, Benny and Lucy. Five friends on their journey through the 1980s. Be plunged into the heart of the acid house rave scene, lowered into the mines of East Kent, and shipped out to sea to fight in the Falklands. As hope appears to dwindle out, we look to find a symbol. A light to guide us through the tunnel, but will it ever show us the way? Or abandon us in absolute darkness...

## ABOUT THE SHOW



Persistent Shadows is an immersive piece of intergenerational, narrative driven theatre that strives to comment on humanities cyclical struggles through a historical, social and political lens. Originally created for Super-8-Auteur's 'Production 3' module in their final year at the University of Chichester, Persistent Shadows has developed to have two versions of the show that are suited to in-the-round and end-on staging, and anywhere in between, as well as an accompanying workshop available for educational settings.

# Technical Requirements

## Lighting

For this piece we require a Lighting Desk. Creatives are aware how to plot on an ETC Ion desk there are a few recurring states in the piece we would require to plot on day of performance.

- USR red spotlight to fit a chair with a skeleton of Maggie Thatcher on
- Low light pub lighting styled washed
- LEDs to flash over the top of the put over the low light state

Blackout A Lighting plan will be sent across

## Projection

Projection will be run off the same Qlab as the sound. We will be projecting onto the back wall

## Sound

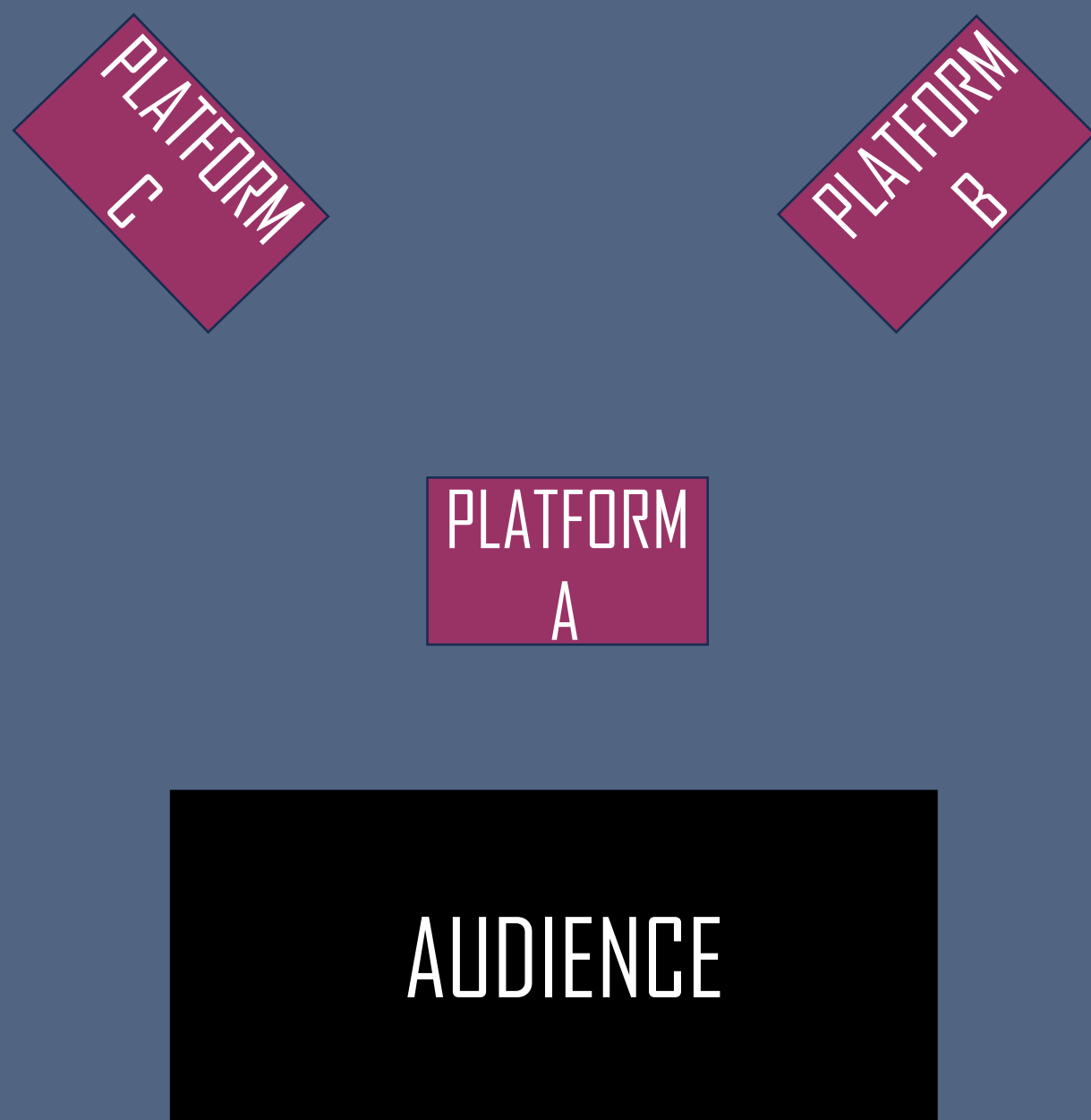
A PA System to Run Qlab off of. Preferably near the Lighting Desk for one person to operate both Light and Sound and projection. We will require One Handheld Mic

# END-ON

For an end-on performance the space will incorporate the 3 platforms on stage, with platforms B and C crossing offstage. Performers will enter the audience space if there is availability in the aisles.

To see how our staging looks end-on, watch this video:

<https://youtu.be/klgSgsuxcNI>

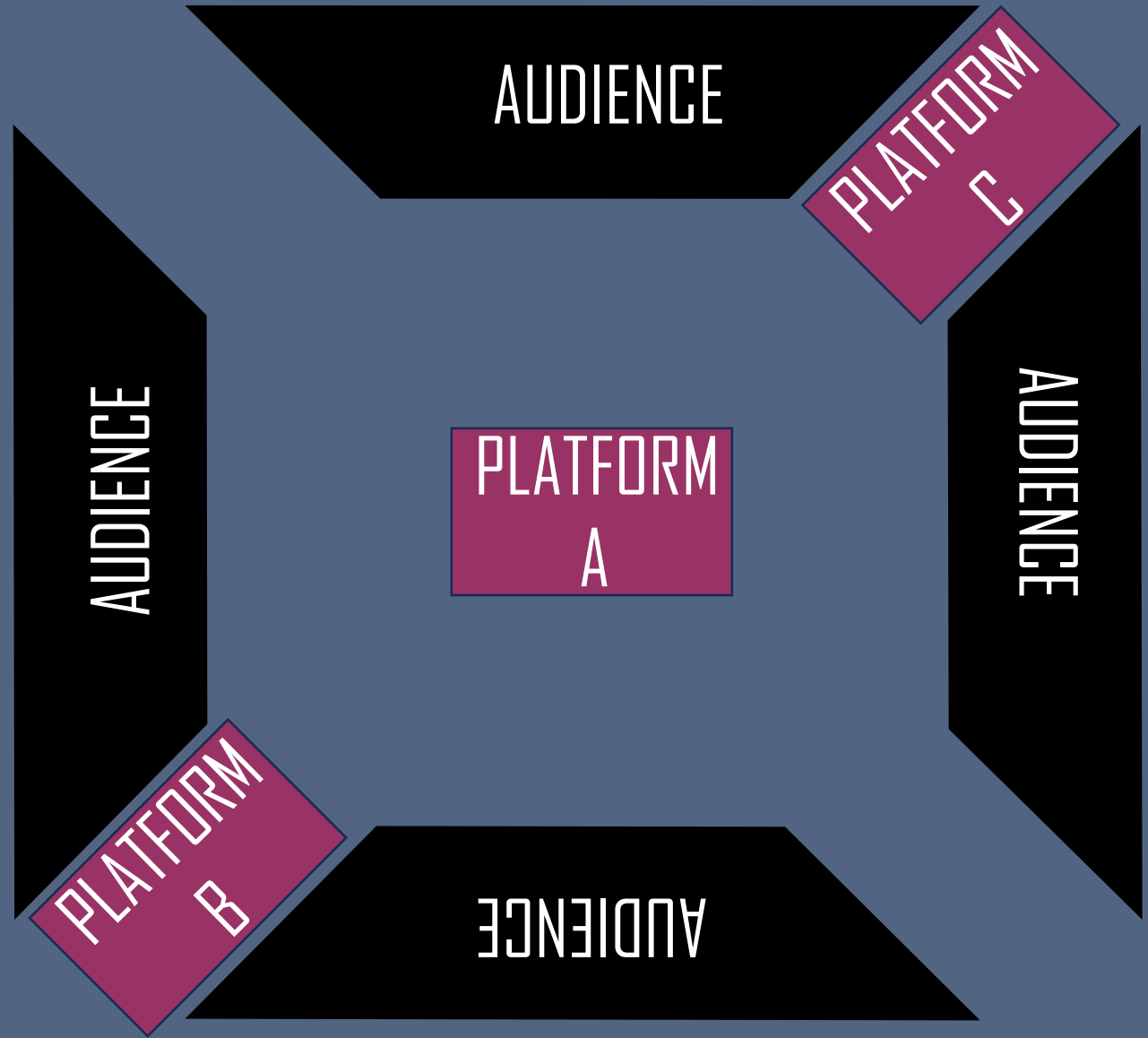


# IN-THE-ROUND

For a performance in-the-round the space will incorporate 4 openings in the audience, 2 of which have a platform situated within them, and the other 2 are left open.

To see how our staging looks in-the-round, watch this video:

<https://youtu.be/lrkEw4pFITI>



# Workshop

Super-8-Auteur's very own workshop, taking inspiration from the process our cast members went through in the design of our first production, 'Persistent Shadows'. In the endless hours we've spent together in a rehearsal or performance space, we've discovered a philosophy that enables different creative minds to come together to have fun, be bold, and most importantly make a great piece of theatre. Our goal is to create an environment where students feel comfortable taking risks, make mistakes and learn the building blocks of a devising process. We do this through a range of icebreakers, verbal and non-verbal exercises and stimuli driven narrative. Whether you have students who enjoy solely physical based theatre or emotionally grasping work there's something for everyone to excel at.



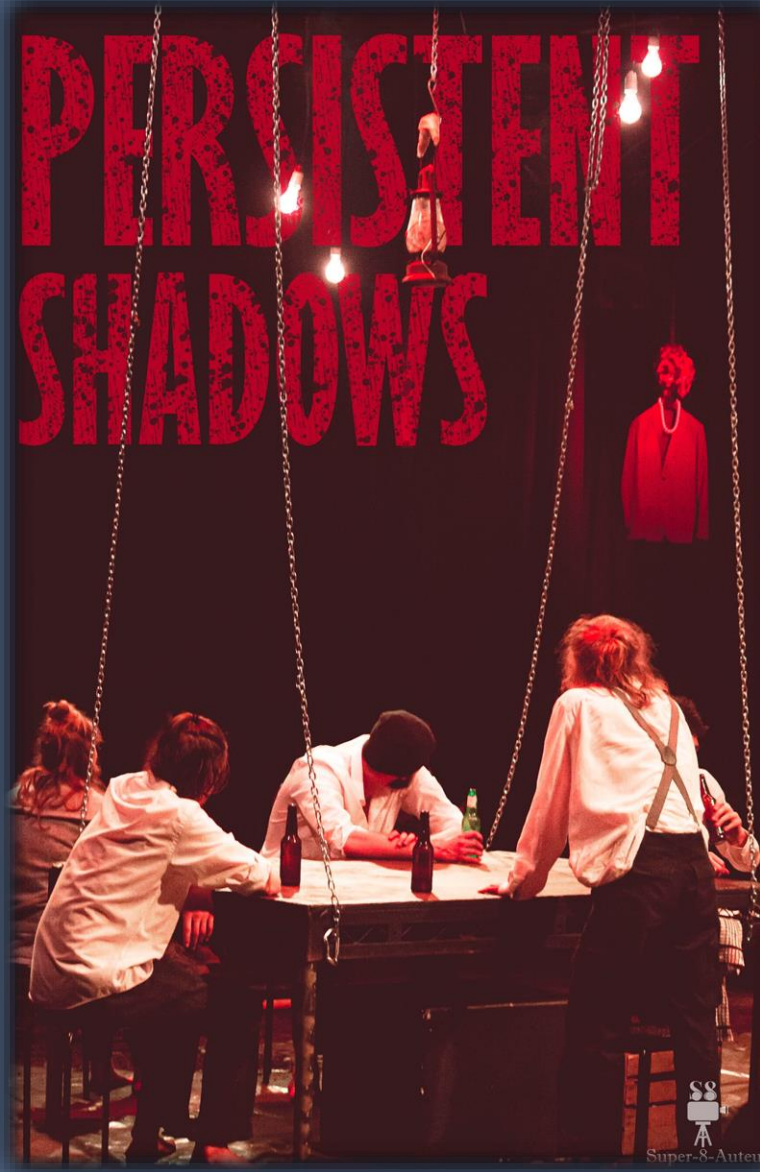
# MARKETING

## Leaflets

Leaflets for the show can be provided to the venue. These are used in the show and handed out during, though additional copies can be provided in advance to help advertise the show.

## Production Photos and Posters

Photos from previous performances, and poster versions, are at hand and can be provided to the venue should want arise.



## Video Trailer

Video trailers of both the end-on and in-the-round versions of the show are available and can either be provided as a link or file transfer.

## Social Media Collaboration

Super-8-Auteur will collaborate with the venue via social media and our website to market the show.



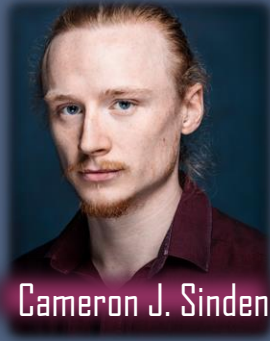
# WHO ARE SUPER-8-AUTEUR



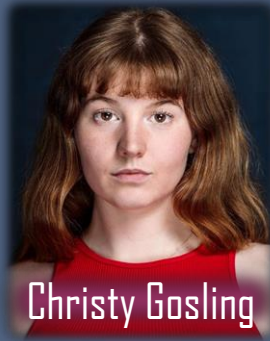
We are a group of actors who formed a theatre company in the 3rd year of our degree at the University of Chichester. Our company creates narrative driven work employing a unique style of immersion that throws our audience into worlds formed of our research into historical, political and social events that comment on humanity.



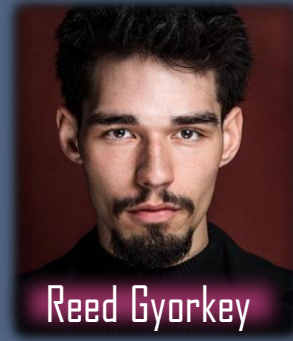
David Lundberg



Cameron J. Sinden



Christy Gosling



Reed Gyorkey



Sean Wiltshire



Joel Yates



# BOOKING INFO + CONTACT DETAILS

## Get in and Get out

For *Persistent Shadows*, a get in that includes lighting, sound, set and a cue-to-cue run through of the show is estimated to take 4 hours. A get out will take about 1 hour.

## Run Time

The Show runs for 1 hour

## Age suitability

For performance in an educational setting Super-8-Auteur believe that due to the nature of the show, be it the language that is used or the issues that are being highlighted, *Persistent Shadows* is suited to an audience consisting of GCSE and A Level students, though this is at the discretion of the venue. Our workshop, however, is suited to students of any age.

## Website

[Super-8-auteur.co.uk](http://Super-8-auteur.co.uk)

## Email

[super8auteur@gmail.com](mailto:super8auteur@gmail.com)