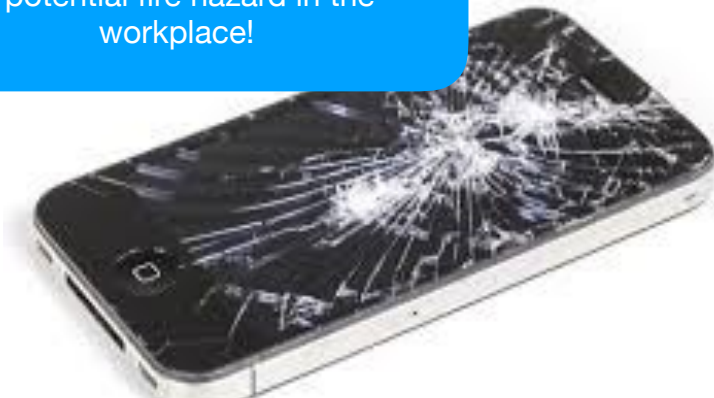


Lithium Battery Safety

A mobile phone is like any piece of electrical equipment - potentially dangerous if we don't follow the manufacturer's recommended instructions for use.

You wouldn't use damaged / defective equipment for your work - so please apply the same standards to your personal devices that you bring into work!

If your mobile phone screen is cracked or damaged you are creating a potential fire hazard in the workplace!



Lithium Ion batteries usually come in a 'bag' form. The screen is an important part of constraining the 'bag' to stop it from swelling.
Cracked screen = swollen battery
Swollen battery = Thermal Runaway



Thermal runaway can also occur where the wrong charging lead is used to charge your phone. Always use the charging lead that came with your phone.

Thermal Runaway is where the battery becomes unstable and generates too much heat and gas - this results in a fierce and often explosive fire that is difficult to extinguish

Lastly, don't leave your mobile phone charging for any longer than you have to. Unplug it when it reaches maximum charge!

