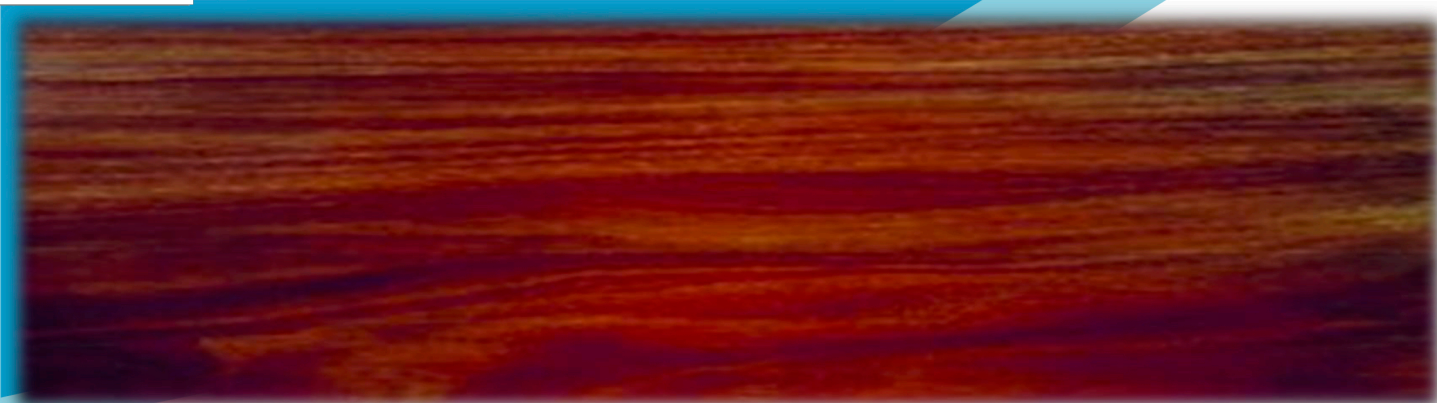




# PACIFIC JARRAH

Manilakara Bidentata



## Description:

Pacific Jarrah is a dense hardwood with pale sapwood and dark red brown heartwood with medium lustre and a fine texture. It is a very strong, durable timber ideal for external applications

**Features:** A highly attractive timber with colour ranging from pinkish brown through to dark reddish brown.

The timber is exceptionally strong and heavy and can be polished to a high lustre.

Highly resistant to termites and biological attack

Hard wearing and ideal for commercial applications such as decking & stairs

Timber is FSC certified and has a BAL rating of BAL29

## Applications: *Pacific Jarrah* is ideal for:

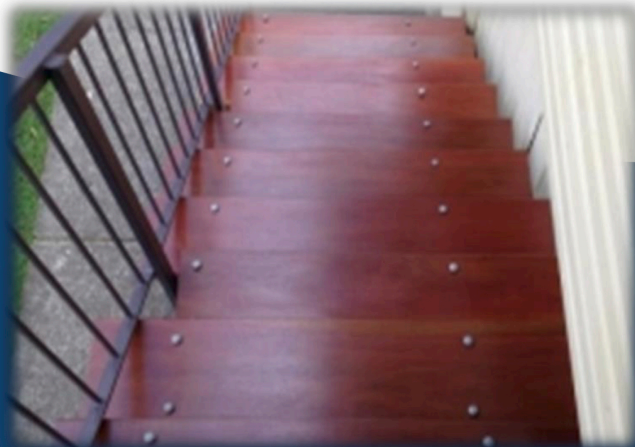
- Decking
- Cladding
- Pergolas
- External construction

## Characteristics- Pacific Jarrah

Timber is moderately hard to work due to its density but finishes cleanly and smoothly due to its fine texture and predominantly straight grain.

Timber must be prebored before screwing or nailing to prevent splitting. Where ends are exposed they should be sealed with a high grade end sealer to prevent unsightly cracking

**Pricing/Availability:** *Pacific Jarrah* is a premium timber available only in select grade, but is competitively priced against lower grade or inferior timbers making it exceptional value. It is only available through specialist timber suppliers



## TECHNICAL INFORMATION

Density kg/m <sup>3</sup> (12% MC)	<b>1140</b>	Durability Class In Ground	<b>1</b>	Bending	<b>Poor</b>
Hardness (Janka kN)	<b>14.2</b>	Durability class above Ground	<b>1</b>	Machining	<b>Fair</b>
Modulus of Rupture Mpa dry	<b>158</b>	Susceptible to Lyctid Borer	<b>No</b>	Finish	<b>Excellent</b>
Modulus of Elasticity	<b>16.3</b>	Termite Resistance	<b>Resistant</b>	Resistance to splitting	<b>Moderate</b>
BAL Rating	<b>BAL29</b>	Tannin Leaching	<b>No</b>	Gluing	<b>Good</b>
Certification	<b>FSC</b>	Stability	<b>Good</b>	Growing Region	<b>South America</b>

Pacific Jarrah is so named because of the similarities in colour to Western Australian Jarrah, however it is a much denser, stronger and more durable timber than its namesake.

It is an excellent timber for external applications such as street furniture, cladding, decking etc, and as it is available in posts up to 200 x 200mm and beams up to 290 x 45mm dressed it is perfect for structures such as Pergolas and landscaping applications where a high grade timber is required.

As with all timbers if left unprotected it will fade to a silvery grey but we recommend coating with a pigmented coating to preserve the rich colours and maintain the beauty of the timber.

The timber is selectively logged and certified as FSC and with a BAL rating of BAL29 it can be used in most areas in Australia.



E: [info@bluelagoontimbers.com.au](mailto:info@bluelagoontimbers.com.au) M: 0404 851 333