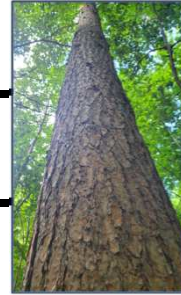


**Effective: 01-01-26**

## Red Pine Pole Specs

<u>Length</u>	<u>Rate Per Pole</u>
30	POR
<i>Minimum circumference at 6' mark:</i>	33" (11" dbh)
35	POR
<i>Minimum circumference at 6' mark:</i>	38" (12" dbh)
40	POR
<i>Minimum circumference at 6' mark:</i>	40" (13" dbh)
45	POR
<i>Minimum circumference at 6' mark:</i>	46" (14" dbh)
50	POR
<i>Minimum circumference at 6' mark:</i>	48" (15" dbh)
55	POR
<i>Minimum circumference at 6' mark:</i>	50" (17" dbh)
60	POR
<i>Minimum circumference at 6' mark:</i>	52" (18" dbh)
65	POR
<i>Minimum circumference at 6' mark:</i>	54" (20" dbh)



### ***Pole Specifications***

- Trim Allowance of a minimum 1.5-2 ft in excess of the lengths above is required.
- Deep side scars or surface pitch pockets are not acceptable.
- Excessive crook or sweep is not accepted. The pole must stay within center line.
- No double sweep.
- No sheared butts.
- Excessive quantities of knots or excessively large knots that decrease the strength of the pole are not acceptable. Limbs in excess of 4" are not acceptable

### ***Pay Schedule and Receiving***

***Anything received by Wednesday 3pm is processed on same Friday.***

***Hours of Operation: 7-3:30***

***Unloading outside of operating hours need to be arranged prior to Delivery.***