

MARTHA

Here's what I use MARTHA for; (I've attached the ILS at SGT for a re;)

MA = Missed Approach - I only want the first thing I have to do on the Missed; re; climb to 800... I've got time to look at the rest of the Missed Approach procedure while I'm climbing to 800.

R= Radios - The R reminds me to tune, identify and set (TIS) all radios related to the approach (even the comm radios). Once I have this done there is no reason for me to even think about the radios again. 110.55 Loc, 338 STUTT LOM, 135.4 LIT Apch.

T= Time - IF, and IF is a big word, the approach requires a time factor I'll round off the time so I can remember it. re; time is only for the Localizer Only approach, time is not a factor on the FULL ILS. The only time I care about is on the final approach to the Missed apch point. re; at 90 knots, on the LOC only, 3:16 (I'm going to round off to 3:00, easier to remember and it guarantees I won't go missed too late.

H= Heading - there is only one heading I care about on an approach - the final approach heading re; 360 (by the way, if it were 358 I'd round it off to 360).

A= Altitude - there is only one altitude I care about on an approach - how low can I go re; 424 for the full ILS (I'm going to round that up to 450'; that is going to be easier to remember AND it will make sure I don't go below the minimums).

So, I've been cleared for the ILS at SGT - **MA** climb to 800, **R** all Tuned, Identified, Set (TIS), **T** not a factor (Full ILS), **H** 360, **A** 450.

All I have to remember as I fly the approach is if I go Missed climb to 800, otherwise fly 360 degrees down to 450 feet.

M-A-R-T-H-A you got to love that girl!

STUTTART, ARKANSAS

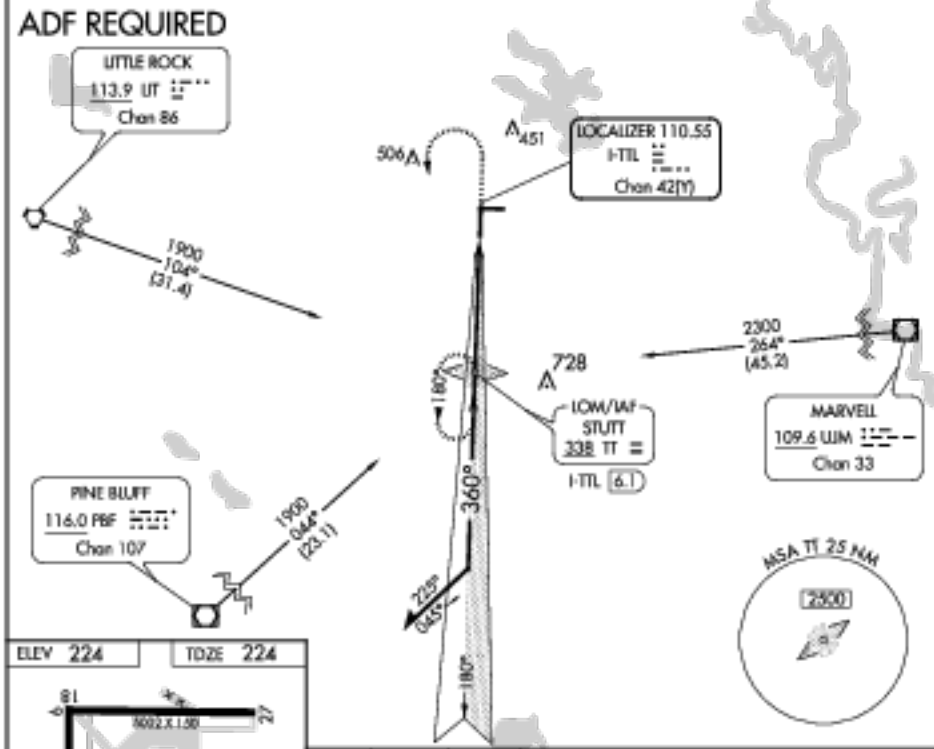
AL-408 (FAA)

LOC/DME I-TTL 110.55 Chan 42(Y)	APP CRS 360°	Rwy Idg TDZE 224 Apt Elev 224
--	------------------------	---

ILS or LOC RWY 36
STUTTART MUNI (SGT)

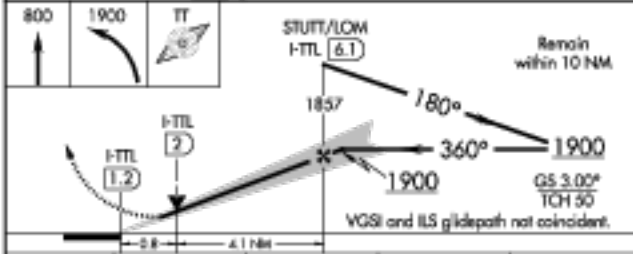
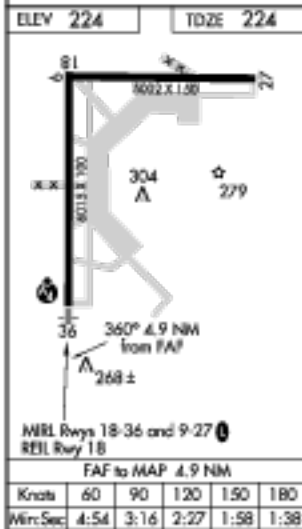
▲ If local altimeter setting not received, use Bill and Hillary Clinton National/Adams Field altimeter setting and increase all DA/MDAs 100 feet. VDP NA with Bill and Hillary Clinton National/Adams Field altimeter setting. **MAISF** MISSED APPROACH: Climb to 800, then climbing left turn to 1900 direct STUTT LOM and hold.

AWOS-3 119.025	LITTLE ROCK APP CON 135.4 353.6	CLINC DEL 123.7	UNICOM 122.8 (CTAF)
--------------------------	---	---------------------------	-------------------------------



SC-1, 25 JUN 2014 to 24 JUL 2014

SC-1, 26 JUN 2014 to 24 JUL 2014



CATEGORY	A	B	C	D
S-ILS 36	424-¾		200 (200-¾)	
S-LOC 36	520-¾		296 (300-¾)	
CIRCLING	660-1	680-1	680-1½	780-2
	436 (500-1)	456 (500-1)	456 (500-1½)	556 (600-2)

STUTTART, ARKANSAS
Orig A 12320

34°36'N-91°34'W

STUTTART MUNI (SGT)
ILS or LOC RWY 36

Good flying,

Rick D'Angelo
Designated Pilot Examiner
(501) 258-4492
dpe.dangelo@gmail.com