

CO-CONSTRUCTION FOR INCLUSIVITY AND STUDENT AGENCY



Ann Lautrette



Remember the last time you
were learning something and
you were **totally engaged**?



Key words?



Co-construction is the key to
engagement in learning



What do I mean by Co-construction?



Teachers and students work together to:

Plan Learning

Do Learning

Assess Learning

Picture it: What does good learning looks like?



Students completing a task alone and in silence



Students listening intently to a teacher's lecture



Students engaged in discussion and debate

Students engaged in collaborative group activities

Students doing hands-on experiments



Students engaged in a self-driven inquiry

Now picture your classroom...



**How do your beliefs
about learning translate
to your classroom?**

**How do you judge a
classroom that doesn't
look like yours?**

There's no one *right way*
to teach

And no one *right* curriculum

Brain Break!

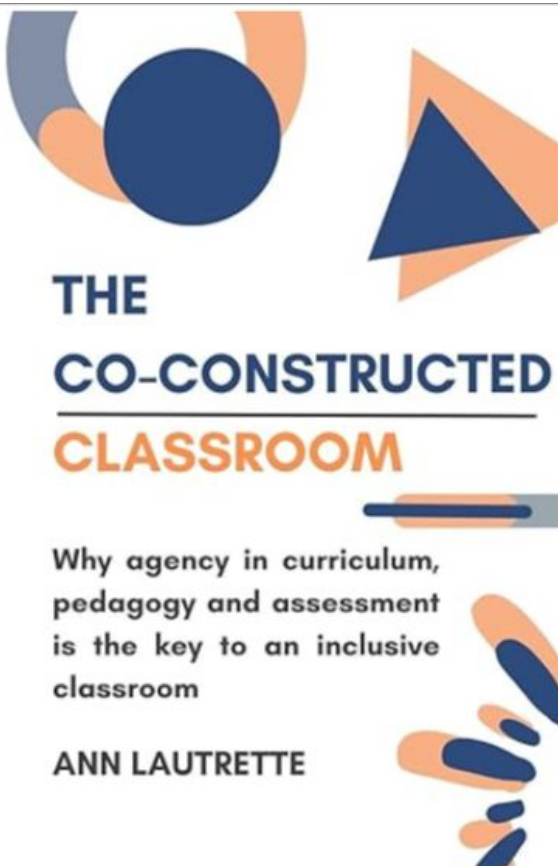
Where did I take this
photo?



CONTEXT MATTERS!

**What are our students'
contexts?**

And how do we know?



How do we engage the voices of our students in curriculum, pedagogy and assessment?

THE CO-CONSTRUCTED CLASSROOM

Why agency in curriculum,
pedagogy and assessment
is the key to an inclusive
classroom

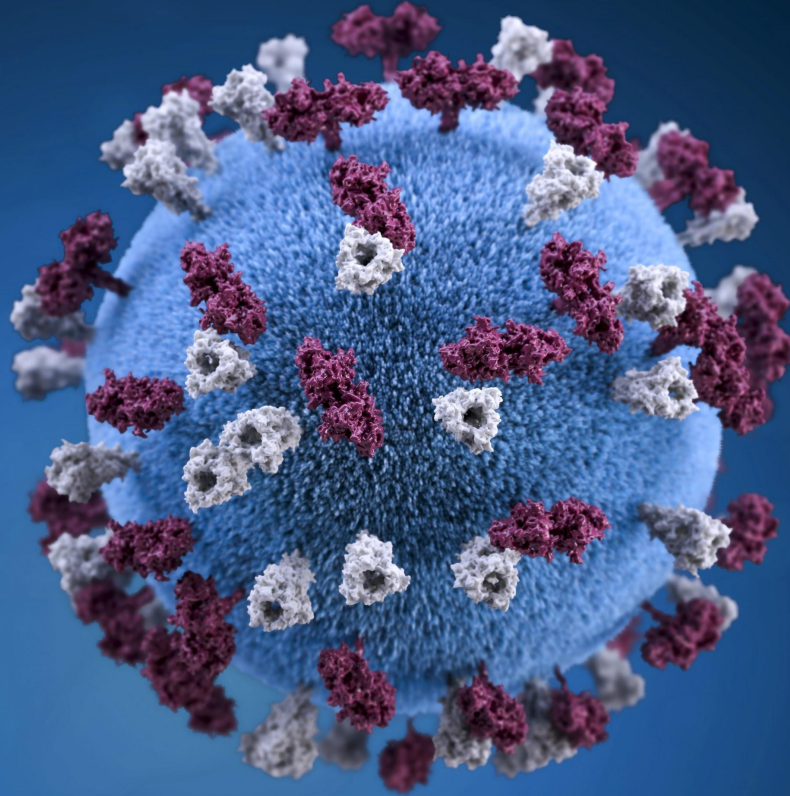
ANN LAUTRETTE

CO-CONSTRUCTING CURRICULUM



Can you think of an example
of something you **love**
teaching, that students don't
love learning?

What you **care most**
about, may not be what
your **students** care
about...



How can we find out
what they **care about**?

ASK THEM!

Global issue 'fields of inquiry' in Language and Literature

Culture, identity
and community

Politics, power
and justice

Beliefs, values
and education

Art, creativity and
the imagination

Science, tech and
the environment

To what extent
does the media
influence our
perspective and
values?



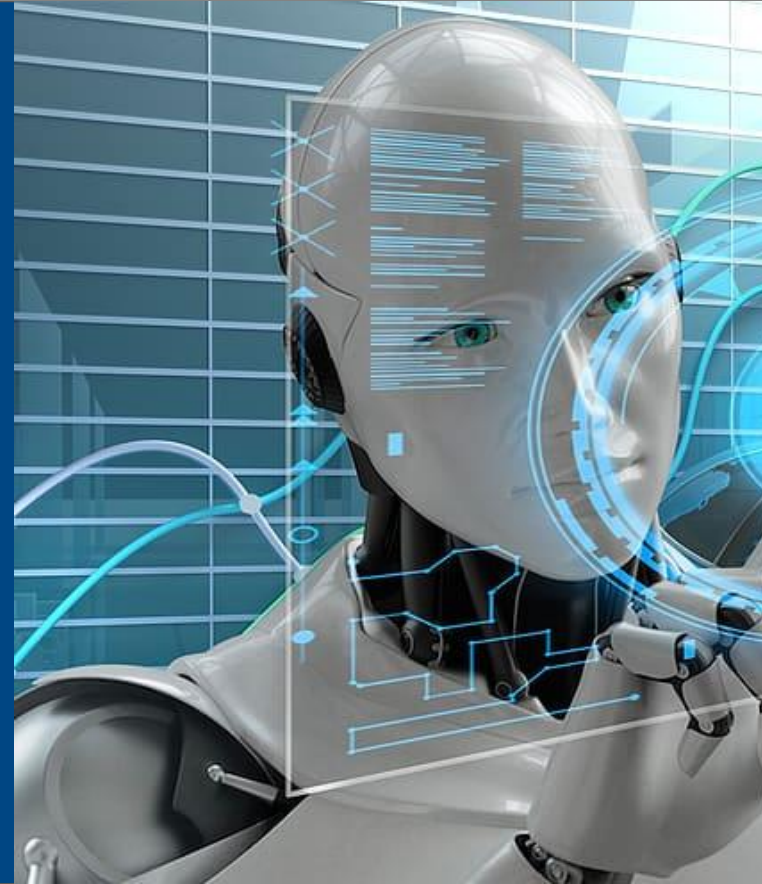
What is the impact of cultural clash?



**How have power
and perspective
influenced
inequality in
society?**



**Can Science and
Technological
advancement do
us more harm than
good?**



**To what extent
does an
individual's
religious belief
influence their
values?**



A curriculum is
co-constructed when it
allows for student inquiry
into issues **they** care about

How do *you* make learning
relevant for all students?



CO-CONSTRUCTING PEDAGOGY



What is your pedagogical style?



Teacher-centred



Student-centred



Same inquiry question

Same resources

Same outcome



**Pre-lecture question
generation**

Note-taking skills

**Post-lecture reflection
activities**



F  B IS IA



Flexible Pedagogies = Flexible Learners



Flexible means...



adapting pedagogies to the
contexts of our learners

The Civil Rights Movement

What do you know?

Here's some more knowledge

**Write something to show what
you've learned**

Adapting to different learning strengths



Socratic Circles



Role Play



Oral response

Affirming student identities

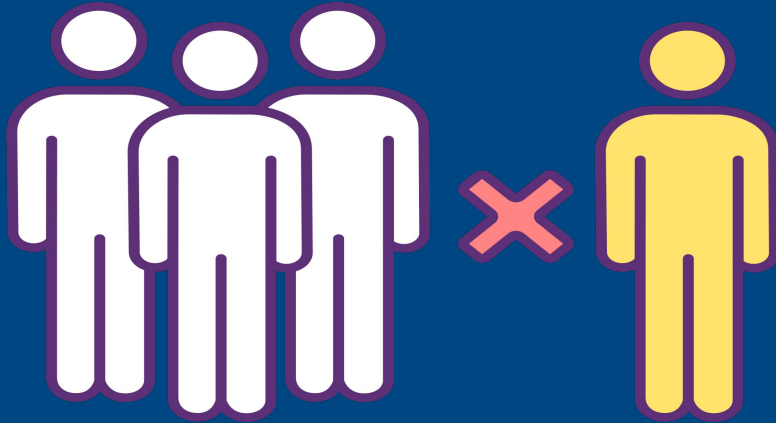


Inquire into
family history



Demonstrate learning through poetry,
storytelling, collage, music...

Develop problem-solving skills



Inquire into the historical
roots of today's
injustices



Advocacy and Service Learning

Promote Empathy



Simulation



Advocacy and Service Learning

Pedagogy is co-constructed
when we actively aim to
remove barriers, be inclusive
and affirm identities

How do *you* teach to value
every student for who they
are?



CO-CONSTRUCTING ASSESSMENT

Assessment *of* Learning

Assessment *for* Learning

Learning *through* Assessment

Teach, teach, teach

Assess!

Learning through assessment



teach
assess

assess
teach

Assessment task as *outcome*

‘Create and deliver a presentation to your class on your assigned topic within cell biology.’



Learning *through* Assessment

What will you need to find out?

How will you do that?

How will you engage your audience?

What should our success criteria be?

**Students have agency in
assessment when they have...**

Greater ownership of the process
Choice when demonstrating learning
Co-constructed feedback

Feedback Strategies

Student identified WWW/EBI

Student Synthesis

Reflection tools

Redos and immediate action

Assessment is
co-constructed when it is a
way to learn and designed to
develop student agency

**How do *you* make
assessment an integral part
of the learning process?**



Work with, *not for*, your students to...

Plan Learning

Do Learning

Assess Learning

Because, a co-constructed classroom promotes...

Agency

Inclusivity

THANK YOU!

Get the book!



thecoconstructedclassroom.com