



7HBW23

ELECTRIC WALKIE PALLET TRUCKS

4,500 lbs. • *2,041 kg*

S P E C I F I C A T I O N S



TOYOTA
make things better



4,500 lbs. 2,041 kg • Standard Equipment

Featuring SepEx™ Drive System Technology, Toyota's electric pallet trucks offer superior overall performance and reliability. Increased speeds with advanced ergonomics provide higher productivity, optimized operator comfort and efficiency.

Standard Features

PERFORMANCE

- 4500 lb 2041 kg capacity
- 24 volt electrical system
- Separately Excited (SepEx™) drive motor with thermal protection and current limiting
- SepEx™ Transistor Control System with MOSFET
- Class 'F' motor insulation
- Controller area network (CAN-Bus) communication
- Regenerative braking
- Contactor-less drive controls
- Electronic touch-pad, keyless entry system with password protection
- Programmable performance for up to ten operators
- Electronic raise and lower controls in operator handle
- Auto-off system
- Error indicator with self-diagnostics
- Fault code memory with hour meter reading
- Hour meter indicator
- Programmable service indicator
- Battery discharge indicator with lift interrupt
- Anti-roll system
- Resetting circuit breaker
- Fused control and power circuits

BODY/EXTERIOR DESIGN

- Box rail fork construction
- Tapered fork tips with pallet entry slides
- Polyethylene stability wear pads (reversible)
- Chrome-plated lift cylinder, 2" dia. 51 mm
- Rubber drive tire, 10" dia. x 5" 254 mm x 127 mm
- Polyurethane load wheels, 3.25" dia. x 4.5" 83 mm x 114 mm
- Battery compartment (26.5" x 7.8" x open height) 673 mm x 198 mm
- SB-175 battery connector (red)
- One-piece lift-off service access cover with pen & pencil storage tray
- Steel fixed pull rods
- Electric horn

OPERABILITY & ERGONOMICS

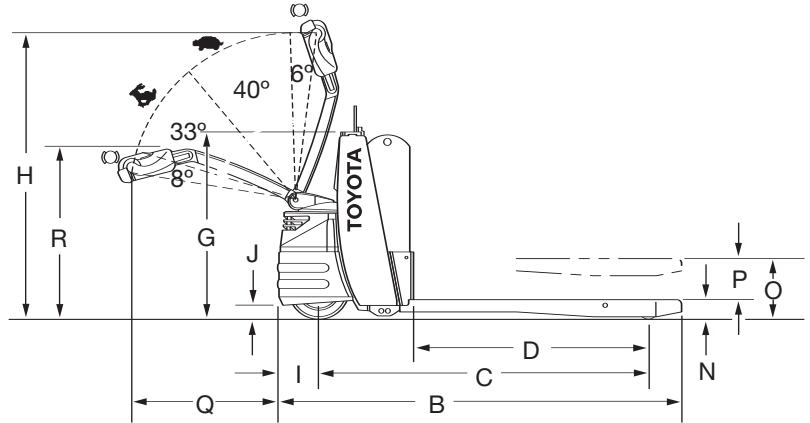
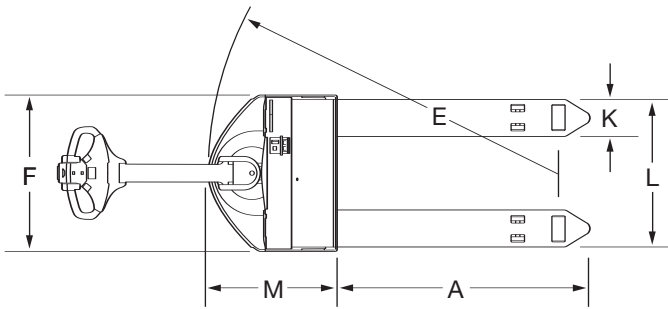
- Multifunction control handle with ergonomically angled hand grips
- Fingertip control of all functions
- Directional thumb wheels
- Programmable neutral speed reduction (coast control)
- Direction reverse switch on control handle
- Low speed torque
- Spring-loaded control handle
- "Pinwheel" capability for right angle stacking
- Electric disc brake
- Emergency power disconnect switch
- Battery disconnect handle

Optional Equipment

- 48" 1219 mm high load backrest (removable)
- 60" 1542 mm high load backrest (removable)
- 72" 1829 mm high load backrest (removable)
- Battery compartment (26.5" x 9" x open height) 673 mm x 229 mm
- Battery/charger pack (24V) swing-out tray (152 AH)
- Battery/charger pack (24V) maintenance-free (195 AH)
- Spring-loaded stabilizing casters
- Crowned poly drive tire
- Grip rubber drive tire
- Rubber non-marking drive tire
- Rubber traction drive tire
- Polyurethane drive tire
- Cold storage conditioning
- Corrosion conditioning
- UL approved model type E
- UL approved model type EE

4,500 lbs. 2,041 kg • Specifications

DIMENSIONAL DRAWING 7HBW23



EXTERIOR DIMENSIONS

		in	mm	29.5	33.5	39.5	43.5	45.5	51.5	57.5								
A	Fork Length (Actual)	in	mm	29.5	33.5	39.5	43.5	45.5	51.5	57.5								
B	Overall Length	in	mm	52.6	56.6	62.6	66.6	68.6	74.6	80.6								
C	Wheelbase (Lowered)	in	mm	39.9	43.9	49.9	53.9	55.9	61.9	67.9								
C	Wheelbase (Raised)	in	mm	36.8	40.8	46.8	50.8	52.8	58.8	64.8								
D	Load Wheel Location (Lowered)	in	mm	23.9	27.9	33.9	37.9	39.9	45.9	51.9								
D	Load Wheel Location (Raised)	in	mm	20.6	24.6	30.6	34.6	36.6	42.6	48.6								
E	Turning Radius	in	mm	46.9	50.9	56.9	60.9	62.9	68.9	74.9								
F	Overall Width	in	mm				28	711										
G	Power Unit Height	in	mm				31.2	792										
H	Control Handle Height	in	mm				47.9	1217										
I	Bumper to Drive Tire Center	in	mm				7.0	178										
J	Bumper Underclearance	in	mm				2.2	56										
K	Fork Width	in	mm				6.75	171										
L	Fork Overall Width (Actual)	in	mm		17.5	445	or	19.5	495	or	21.5	546	or	24.5	622	or	26.5	673
M	Head Length	in	mm				23	584										
N	Fork Down Height	in	mm				3.25	83										
O	Elevated Height	in	mm				8.65	220										
P	Lift	in	mm				5.4	137										
Q	Handle Length	in	mm				25.9	658										
R	Lowered Handle to Floor	in	mm				27.8	706										

Exterior dimensions have been given for a standard model with a 7.8" 198 mm wide battery compartment.

AISLE REQUIREMENT – RIGHT ANGLE STACK

Model	7HBW23						
	Load Length (Nominal Fork Length)						
Load Width	32	36	42	46	48	54	60
in mm	in mm	in mm	in mm	in mm	in mm	in mm	in mm
40 1016	53 1346	57 1448	63 1600	67 1702	69 1753	75 1905	81 2057
44 1118	52.8 1341	56.8 1443	62.8 1595	66.8 1697	68.8 1748	74.8 1900	80.8 2052

Minimum Aisle Width for Right Angle Stacking

Aisle widths have been given for a standard model with 7.8" 198mm battery box.

Add a minimum of 12" 305mm for maneuverability.

Aisle widths assume a 1" 25mm clearance on each side of load.

PERFORMANCE DATA

Travel Speed (mph <i>kph</i>)	Full Load	3.4 5.5
	No Load	3.6 5.8
Gradeability %	Full Load	6
	No Load	10

TIRES

Type	Drive	Rubber
	Load	Polyurethane

BATTERY – 24 VOLT

Max Amp Hr	AH	330	
Battery Connector/Color		SB-175/Red	
Battery Connector Cable Location		B	
Battery Connector Cable Length	in mm	18 457	
Battery Weight Max.	lb kg	660 299	
Battery Weight Min.	lb kg	200 91	
Battery Compartment (L x W) – Open Height	Standard	in mm	26.5 x 7.8 673 x 198
	Optional	in mm	26.5 x 9 673 x 229



Virtually all Toyota 7-Series lift trucks sold in North America are manufactured and assembled at our state-of-the-art manufacturing facility in Columbus, Indiana. Toyota Industrial Equipment Manufacturing (TIEM) has attained ISO 14001 certification for environmental compliance and ISO 9001 for quality management excellence.



TOYOTA CANADA INC. (TCI) has received ISO 14001 certification for its Toronto, Ontario based head office facilities and parts distribution centre. This internationally recognized certification illustrates Toyota's global commitment to protecting the environment.

Established in 1970, Toyota Canada Inc., Industrial Equipment Division (TCI-IED), headquartered in Toronto, Ontario, is the only major lift truck supplier to have a head office and parts distribution centre in Canada dedicated to supporting the Canadian market.

Toyota's commitment to customer service extends nationwide. Thirty-two authorized Toyota Industrial Equipment Dealer facilities located throughout Canada offer comprehensive customer support including one-stop shopping for lift trucks, genuine Toyota parts and Toyota University accredited service technicians.

Not only is Toyota committed to Canada, but is proud of its overall commitment to North America, which includes:

- Direct North American employment: 38,041
- Direct North American Investment: CDN \$20.3 B

We are committed to supporting our products, and most importantly, our customers.

For more information contact your local authorized Toyota Industrial Equipment dealer, fax Toyota direct at **1-800-592-3851**, or visit the Toyota Industrial Equipment web site at **www.forklift.toyota.ca**.

Some product features here-in are optional. Please contact your dealer for specifications.
Details of specifications are based on information available at time of printing and may change without notice.



ISO 14001

TOYOTA CANADA INC.

March 2009

7HBW2-01EES-25