

# SIMON ANDREW

Formulating Landscape - Wallace Galleries



---

cover image:-

Summer Evening  
oil on canvas  
36 x 36in.

# Formulating Landscape

---

These paintings of the land are less about accurately reproducing it and more about putting its elements together in a way that has some meaning that can convince. It is about using the landscape as a tool for the real aim, which is that of making a painting that makes sense. Once a painting makes sense it refers back to its origins but in a way that is new. It is given a new identity. Like an actor, their face may be familiar but their lines differ when they play different characters.

Trying to find a convincing language within a painting, and often combining more than one, stretches what is possible and pushes me into new realms, in a search for new solutions. I love this sort of exploration. - Simon Andrew

# Bio

---

Simon Andrew was born in Portsmouth, spent his formative years in Penwith, Cornwall, studied science at Queen's University, Canada and fine art at Newcastle University where he received his MFA. While Simon was at Newcastle he was the beneficiary of The Lawrence Atwell Scholarship Award from Skinners' Hall, London. U.K. Simon was awarded first prize (Northern Region) for his work in The Laing National Landscape Competition. London. His work was also selected for The Hunting Group Contemporary Art Competition. He has received arts council grants and is represented in major corporate collections, including Glaxo Wellcome, Hewlett Packard, Canadian Business Development Bank, Fidelity Investments and Her Majesty the Queen in Right. Simon has produced art for the artistic ventures of Mel Gibson and the Canadian multi - Juno Award winning group The Tragically Hip. He has attended residencies in both Canada and abroad and was the recipient of a full fellowship award from The Vermont Studio Center, USA. Recently Simon won first prize for his work in Exposures, an exhibition which was judged by curators from contemporary public art galleries in Canada. He has had numerous solo shows at galleries both public and commercial at home and abroad. Currently Simon works in Canada and England.



# C.V.

---

## SOLO SHOWS selected:

- 2016 The Mira Godard Gallery, Toronto, ON. Canada
- 2014 Mini Show The Wallace Gallery, Calgary AB. Canada
- 2013 Studio 21, Halifax, NS. Canada
- 2012 The Mira Godard Gallery, Toronto, ON. Canada  
The Wallace Gallery, Calgary AB. Canada
- 2011 Great Atlantic Art Galleries, Cornwall, U.K.
- 2010 The Seascope Gallery, Godalming, U.K.
- 2008 Goldie Gallery, Greene Ave., Montreal, PQ. Canada  
The Art Gallery of Windsor, Windsor, ON. Canada
- 2001 The Edward Day Gallery, Kingston, ON. Canada
- 2000 Nancy Poole Gallery, Toronto, ON. Canada
- 1999 The Edward Day Gallery, Kingston, ON. Canada  
Nancy Poole Gallery, Toronto, ON. Canada  
The Danielson Gallery, Toronto, ON. Canada
- 1998 The Edward Day Gallery, Kingston, ON. Canada  
The K.A.A.I., Kingston, ON. Canada

- 
- 1995      The Edward Day Gallery, Kingston, ON. Canada  
            The James Baird Gallery, Saint Johns, NF. Canada  
            The Art Gallery of Windsor, Windsor, ON. Canada
- 1994      Agnes Etherington Art Centre, Kingston. ON. Canada  
            Nancy Poole Gallery, Toronto, ON. Canada
- 1992      Nancy Poole Gallery, Toronto, ON. Canada
- 1990      The Dryden Street Gallery, London, U.K.  
            The Bedford Hill Gallery, London, U.K.  
            Oxford University, U.K.
- 1988      The Long Gallery, Newcastle, U.K.

GROUP SHOWS selected:

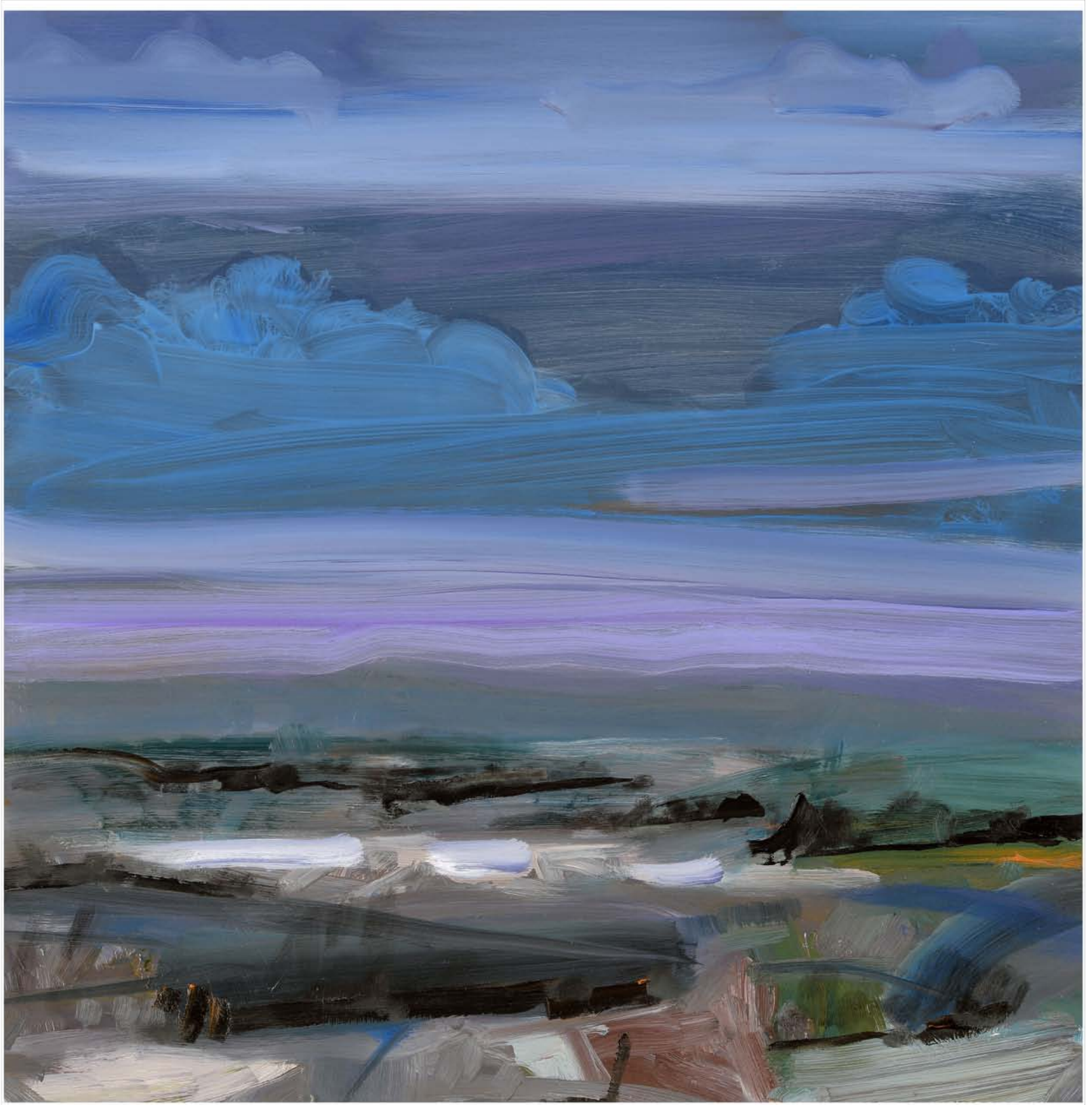
- 2017      Duran Mashaal Gallery, Montreal, PQ. Canada  
            Simon Andrew Daniel Hughes, Oeno Gallery, Picton, ON. Canada
- 2016      Toronto International Art Fair, Toronto, ON. Canada.  
            The Wallace Gallery, Calgary AB. Canada  
            Summer Show. Oeno Gallery, Picton, ON. Canada

- 
- 2015 Toronto International Art Fair, Toronto, ON. Canada.  
Painting the Figure. The Mira Godard Gallery, Toronto, ON. Canada  
The Wallace Gallery, Calgary AB. Canada
- 2014 Toronto International Art Fair, Toronto, ON. Canada.  
The Landscape Show. The Mira Godard Gallery, Toronto, ON. Canada
- 2013 Toronto International Art Fair, Toronto, ON. Canada.
- 2012 Toronto International Art Fair, Toronto, ON. Canada.  
"Self Portrait" The Mira Godard Gallery, Toronto, Canada.  
The Belgrave Gallery, St Ives, U.K.  
Preview 2012 Mira Godard Gallery, Toronto, ON.
- 2011 The Toronto International Art Fair, Toronto. ON.  
Eton College, Windsor, U.K.  
"Interiors" Mira Godard Gallery, Toronto, ON.  
The Wallace Gallery, Calgary, Alberta.
- 2010 December Show, Mira Godard Gallery, Toronto, ON





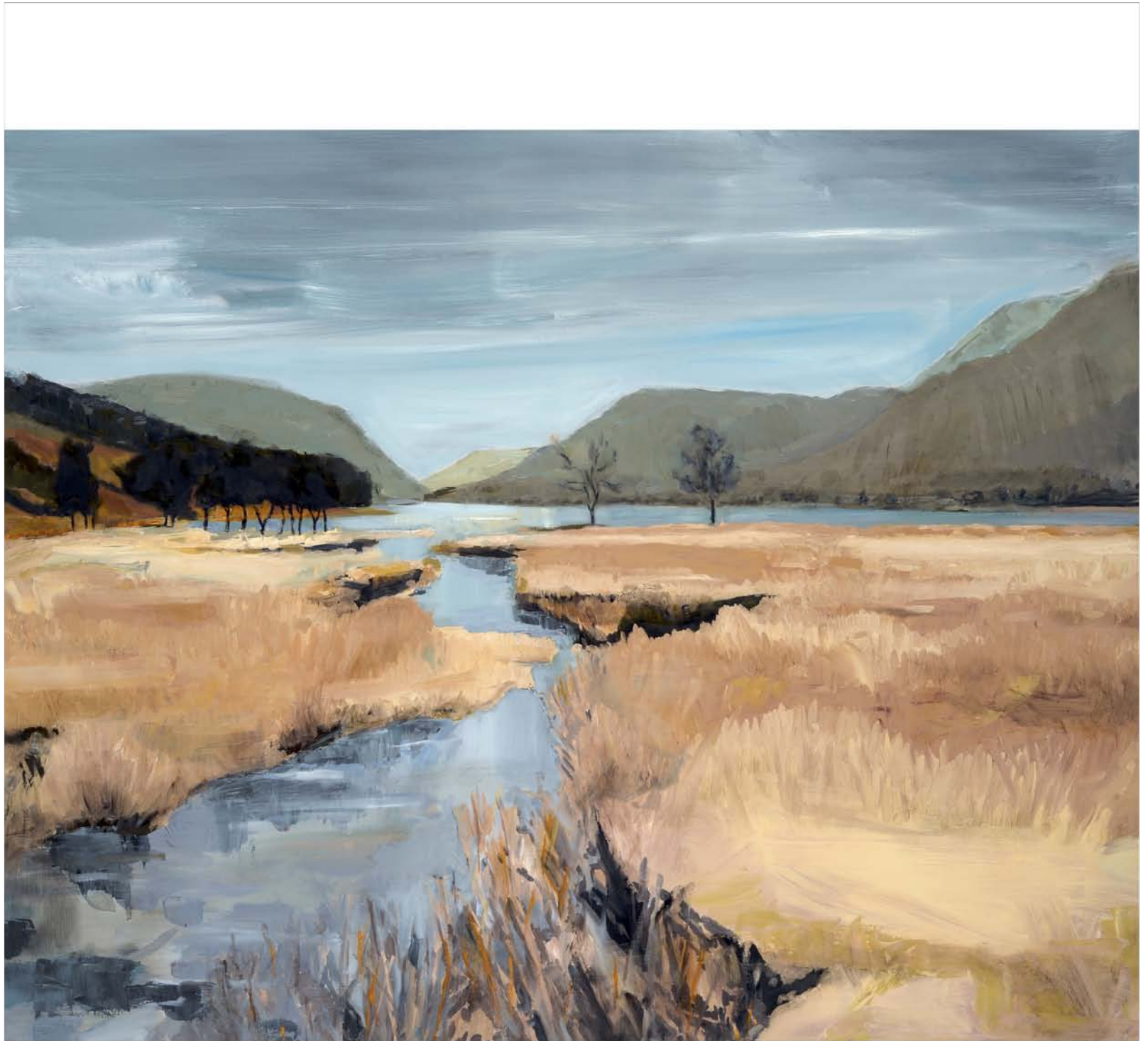
Moon Rise across Lake - oil on canvas 24 x 24in



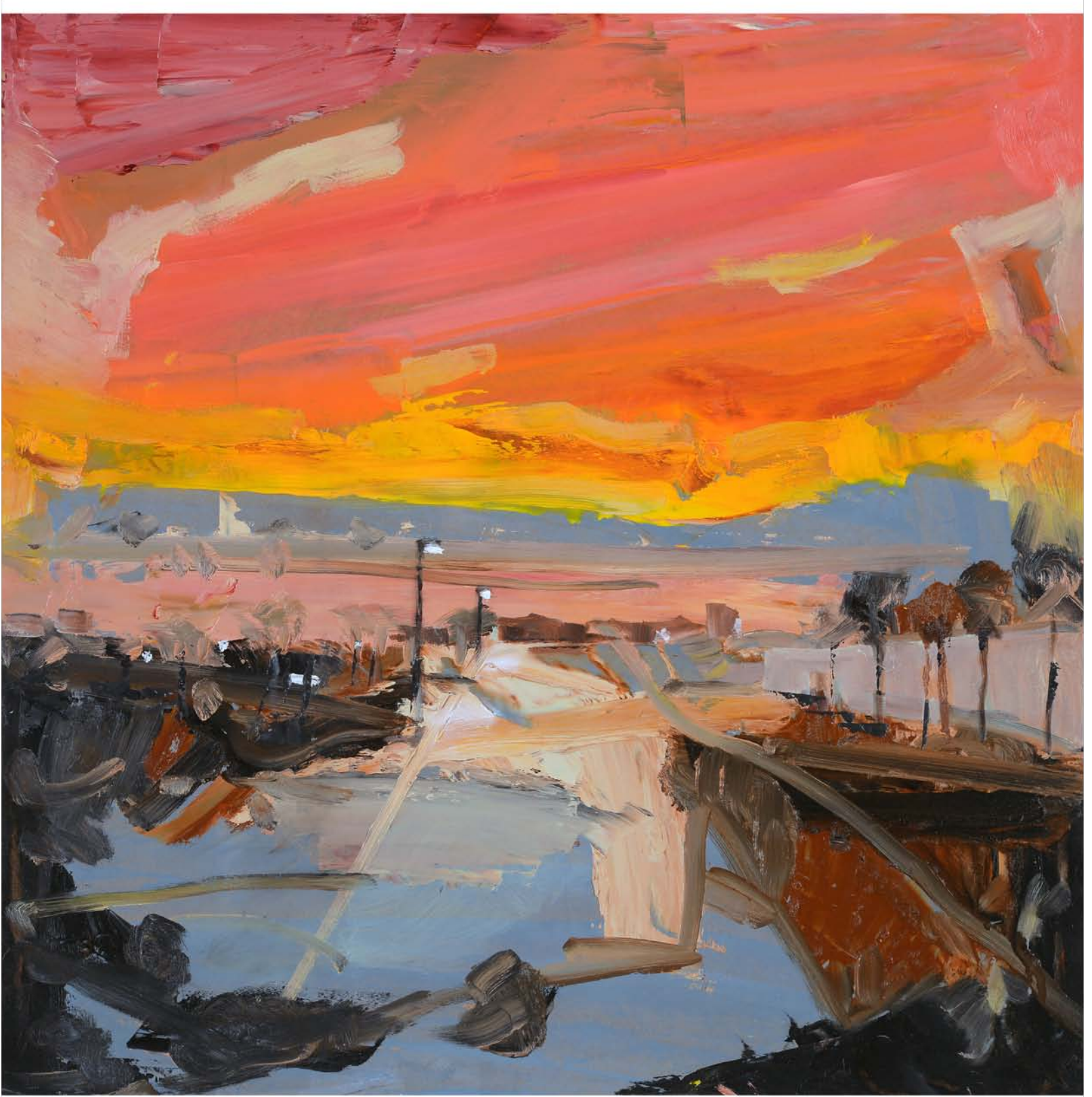


Eastern Ontario Landscape - oil on board 24 x 24in





Stream in Winter - oil on canvas 48 x 60in





Red Sky - Pastel on board 24 x 24in







Frozen Lake Landscape - oil on board 11 x 15in





Stream in Winter - oil on canvas 48 x 48in





Early Spring - oil on canvas 36 x 48in







Wallace Galleries Ltd.  
500 - 5th Avenue S.W.  
Calgary, Alberta, Canada.  
T2P 3L5