

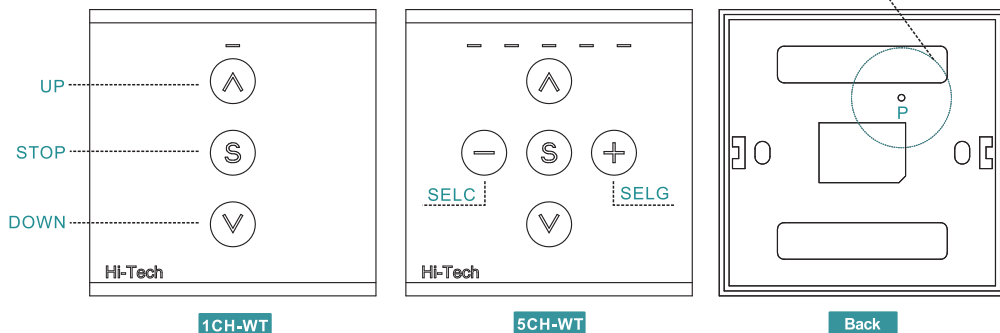
(1CH-WT 5CH-WT)

Emitter Instruction

Version:V1.1

Hi-Tech

Instruction Of Buttons

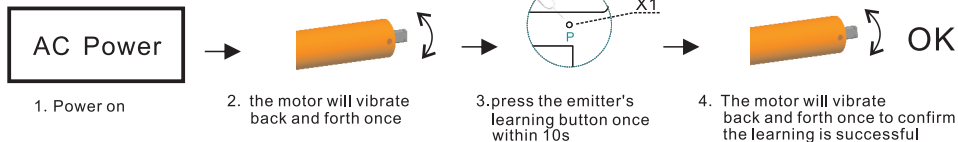


Technical Specification

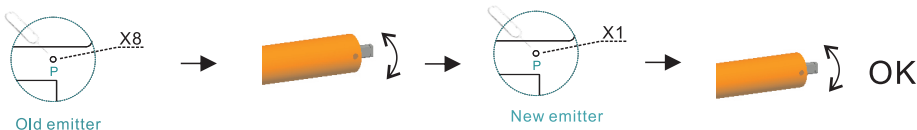
	1CH-WT	5CH-WT
Power Supply	Lithium 3V(CR2450)	
Frequency	433.92MHz	
Channels	1	5
Range in open field	180mt	
Max.absorption	≤8mA	≤10mA
Dimensions	86x86x14(mm)	
Weight	98g	

Code Learning

◆Code learning by power on for the first time



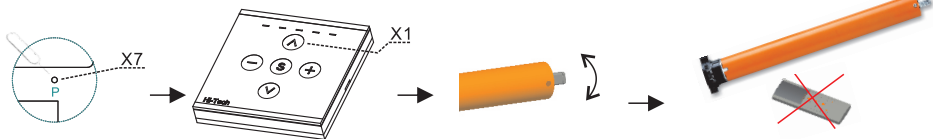
◆Code Learning through copy the old emitter



1. Short press the learning button at the backside of the old learnt emitter for 8 time
2. the motor will vibrate back and forth once
3. Short press the new emitter or new channel of the old emitter's learning button once within 10s
4. the motor will vibrate back and forth once to confirm the learning is successful

Code Deleting

◆Delete the current emitter operating



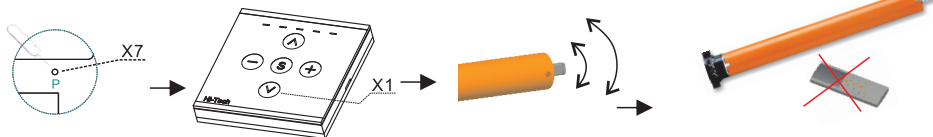
1. Short press the learning button at the backside of the emitter 7 times

2. Press Up button on the emitter once

3. the motor will vibrat back and forth once

4. The current emitter operating could not control the motor anymore

◆Delete all the emitters that learnt with the motor



1. Short press the learning button at the backside of the emitter 7 times

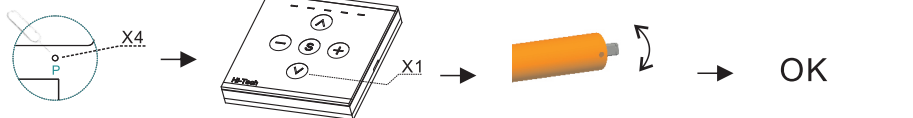
2. Press Down button on the emitter once

3. the motor will vibrat back and forth twice

4. All emitters that learnt with the motor could not control the motor anymore

Direction Change

◆Direction change through emitter



1. Short press the learning button at the backside of the emitter 4 times

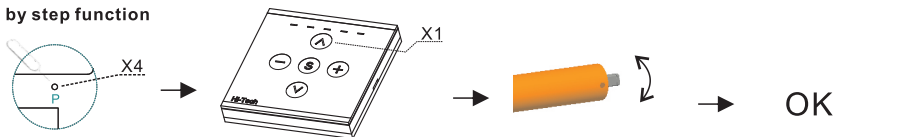
2. Press Down button on the emitter once

3. the motor will vibrat back and forth once

4. The running direction changed

Dot Movement

◆Step by step function



1. Short press the learning button at the backside of the emitter 4 times

2. Press Up button on the emitter once

3. the motor will vibrat back and forth once

4. Dot movement /continuous running switch is successful

Warning

1. Emitter couldn't expose to moisture or be striked heavily, or else the emitter life will be affected.
2. If the emitter is not so sensitive or the radio range becomes shorter, pls check whether need to change the battery as suggested.
3. It's not suggested to use different type battery to avoid any dangerous risk.
4. Dispose of used batteries properly.