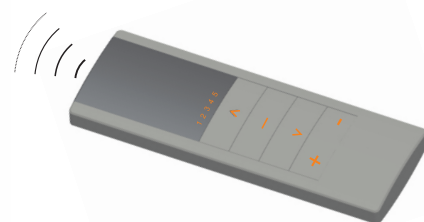


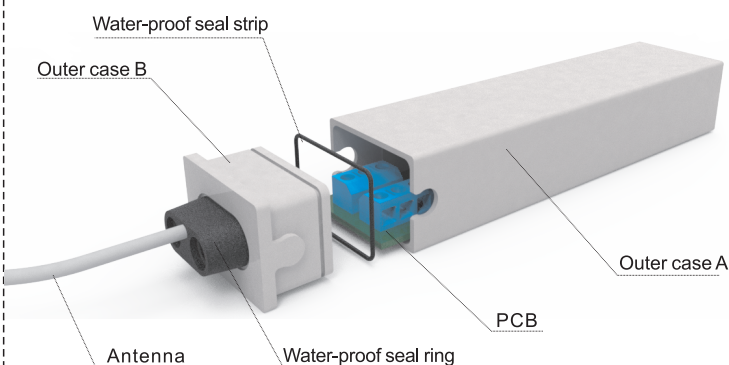
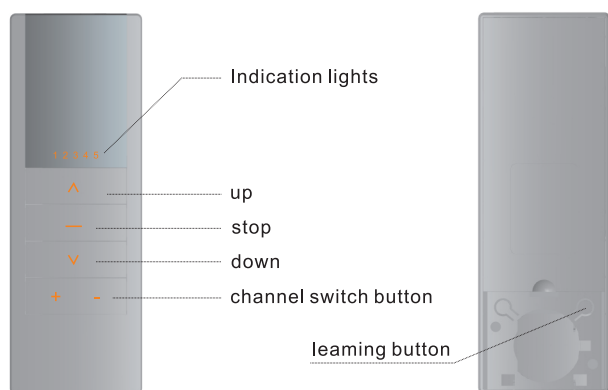
1 Appearance display



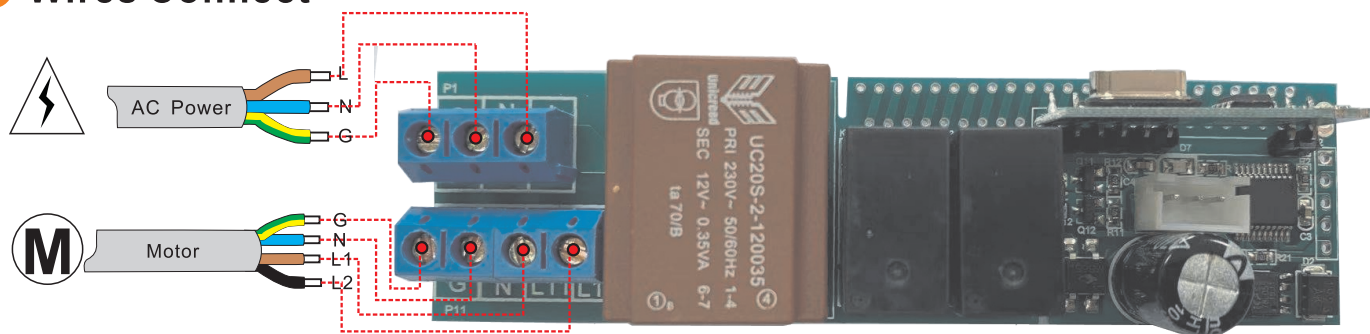
2 Parameters

Model No	Operation	Channel	Frequenuy	Sensitivity	Voltage	Temperature	Loading Power	Protection degree
1CH-RECV (WP)-A	Remote	≤15pcs	433. 92MHz	-110dBm	240V/50Hz	-40℃ ~85℃	≤500W	IP65
1CH-RECV (WP)-B					120V/60Hz			

3 Product Basic Information

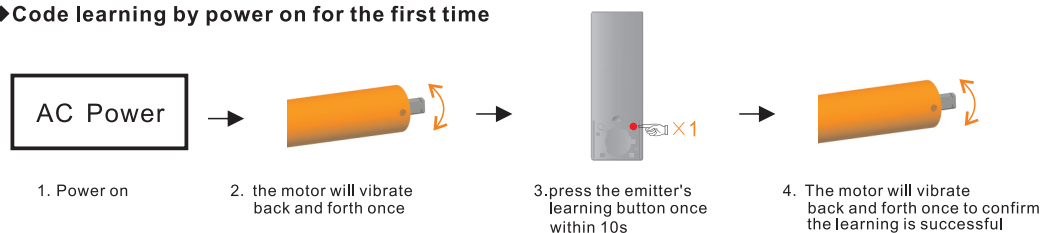


4 Wires Connect

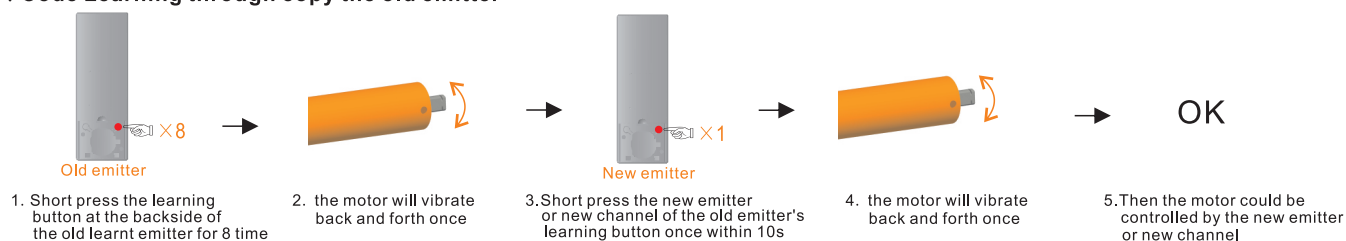


5 Code Learning

◆Code learning by power on for the first time

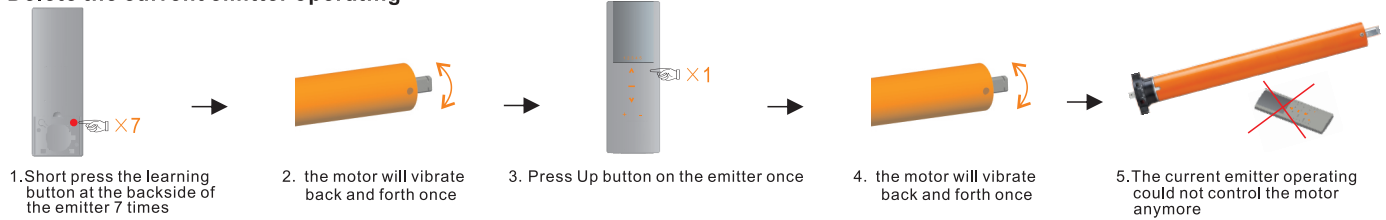


◆Code Learning through copy the old emitter

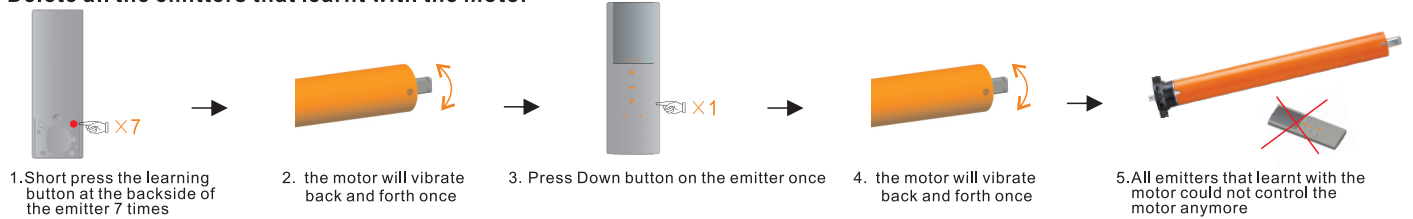


6 Code deleting

◆Delete the current emitter operating

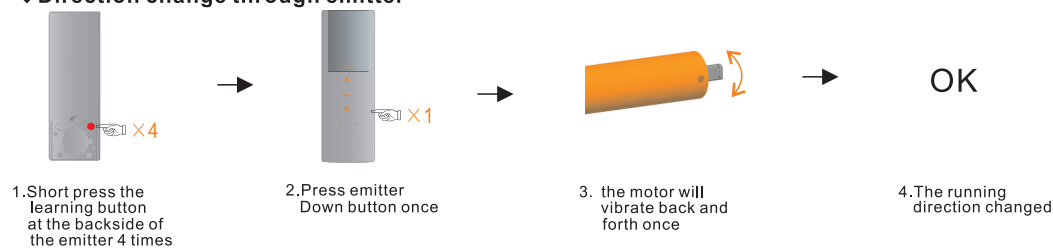


◆Delete all the emitters that learnt with the motor



7 Direction change

◆Direction change through emitter



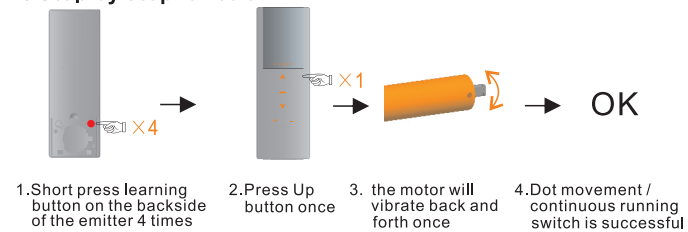
8 Limit setting

- The original limit turns usually is adjusted 1.5 to 2 turns in one direction before leaving factory.
- “+” symbolizing the increase of revolutions and “-” means decrease; white symbolizing counterclockwise and red means clockwise. The regulation should be conducted under motor-working conditions.
- When clockwise regulation is needed, use the button along with the red sign, whereas counter-clockwise needs, use the one in white side.
- Indicating the increase or decrease the path length: “+” stands for increase, “-” for decrease.



9 Dot movement

◆Step by step function



Dot movement/step by step function means the motor moves step by step. If the motor is in Dot movement state, long press Up/Down button, the motor will run continuously

10 Note

- Setting may fail due to the interference of signal. If in this case, please reset.
- The emitter is taken as an example in this instruction. The receiver is compatible with several other rolling code emitters.
- Please do not press buttons for too long in case life span of battery declines. The button press should be about 0.5s with 1S interval. If the battery is in low power, please replace battery.
- The control unit is of high voltage. Please do not place it in humid atmosphere.
- Children should be supervised to ensure that they do not play with the appliance.
- Ambient temperature: -10°C ~ +55°C.
- All products are as per material subjects if there is change in appearance, color, function etc. The information is subject to changes without prior notice..