

1CH-KT Series Emitter Instruction

Version:V1.3

Instruction Of Buttons



Technical Specification

Battery: 3V(CR2032)

Battery life: ≥ 2 years

Working temperature: -10°C ~ 50°C

Working current: ≤ 10mA

Radio frequency: 433.92MHz

Code: rolling code

Protection index: IP55

Radio range: 150 meters outdoor, 35 meters indoor

Start "Mode Setting"

Remarks: Before use of 1CH-KT remote control to code learning/setting with radio tubular motor, it is needed to start "mode setting" and then could operate the function setting.



Long press "SET" button for 5s till the LED light on the remote is on always



LED light is on ("Mode Setting")

✓ Code paring ✓ Motor function setting

■ Under setting mode, press any button, up/down/stop, could exit setting mode manually.

■ Under setting mode, if no operation for 20s, will exit the setting mode.

Code Learning

Note: Before performing the following operations, please ensure that the emitter is in ("Mode Setting") mode, And the LED red light of the emitter is always on.

◆ Code learning by power on for the first time



1. Power on



2. the motor will vibrate back and forth once



3. Short press the emitter's set button once within 10s



4. The motor will vibrate back and forth once to confirm the learning is successful

OK

◆ Code Learning through copy the old emitter



1. Short press the set button of the emitter 8 time



2. the motor will vibrate back and forth once



3. Short press the new emitter or new channel of the old emitter's set button once within 10s



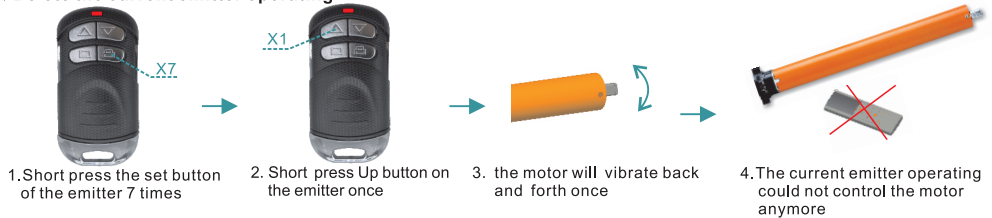
4. the motor will vibrate back and forth once to confirm the learning is successful

OK

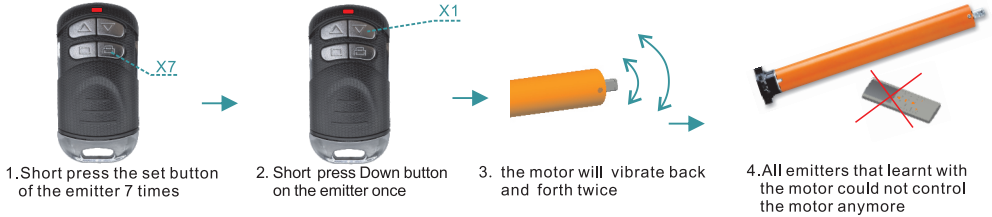
Code Deleting

Note: Before performing the following operations, please ensure that the emitter is in ("Mode Setting") mode, And the LED red light of the emitter is always on;

◆Delete the current emitter operating



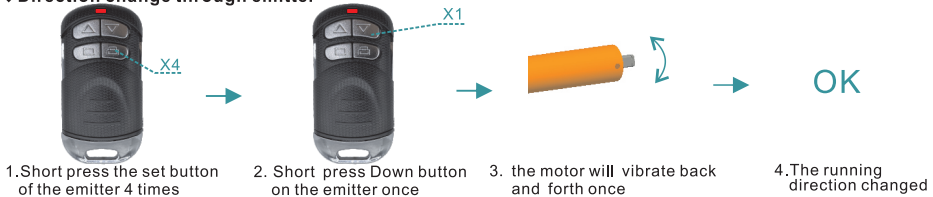
◆Delete all the emitters that learnt with the motor



Direction Change

Note: Before performing the following operations, please ensure that the emitter is in ("Mode Setting") mode, And the LED red light of the emitter is always on;

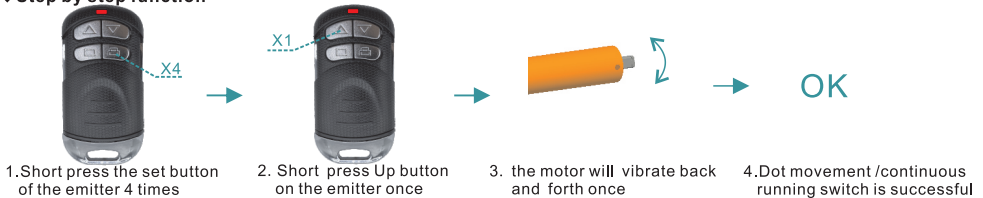
◆Direction change through emitter



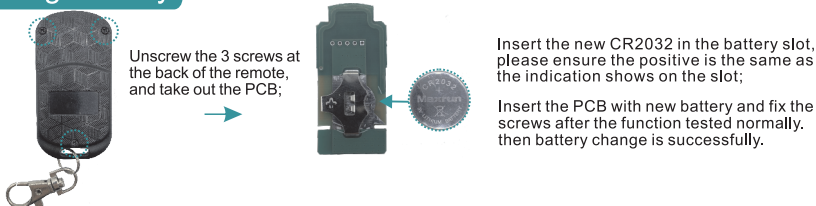
Dot Movement

Note: Before performing the following operations, please ensure that the emitter is in ("Mode Setting") mode, And the LED red light of the emitter is always on;

◆Step by step function



Change Battery



Warning

1. Emitter couldn't expose to moisture or be struck heavily, or else the emitter life will be affected.
2. If the emitter is not so sensitive or the radio range becomes shorter, pls check whether need to change the battery as suggested.
3. It's not suggested to use different type battery to avoid any dangerous risk.
4. Dispose of used batteries properly.