

JENSEN AUCTIONS

Preview Date:
 May 23rd 9:00am-2:00pm
 OR
 By Appointment
 507-456-1210

Pick Up Dates:
 May 30th 8:30am-4pm
 &
 May 31st 8:30am-12pm

Bidding Starts

Monday, May 18, 2026 - 8AM CST

Bidding Ends

Friday, May 29, 2026 - 5PM CST

ONLINE ONLY

Pick Up Location: 5376 N County Rd 45, Medford, MN 55049

Auctioneers Comment: After many years in the auto body repair business, Tom has decided to retire and move away. This auction features a great selection of items. Be sure to take a look! Thanks, Dennis

Pickup, Trailers, & Scooter

18' Tandem Axle Car Trailer w/Ramp, Electric Brakes, Winch, Spare Tire (Nice)



- 2000 Chevrolet 1500 Regular Cab Pickup, Pewter Color, 102,000 Miles, 8' Box, 4X4, V6, AM/FM Radio, AC, Cruise, Tow Pkg, Alum Wheels, Topper (Very Clean)



- 2006 Yamaha Vino Scooter, Red, 836 Miles (Nice)



- 1988 Ford F-150 XLT Lariat Regular Cab Pickup, Dark Blue, 92,000 Miles, 8' Box, 4x4, Lock Out Hubs, 4.9 Engine, 4spd Manual Trans, Power Windows, AM/FM, Cruise, Rally Wheels, Running Boards, w/8' Snowplow Upgraded Front Springs, (Very Nice)

Auto Body Equipment & Tools



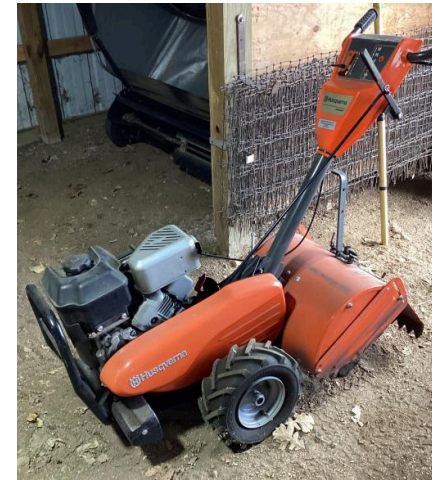
- C-Aire Vertical, 80 Gallon Air Compressor, 5Hp, Single Stage, Single Phase, 220v (Nice)
- 3M 20" Mobile Twin Masking Machine - Low Rise 2500lb. Car Hoist - Electric Over Hyd, Small Pot Sand Blaster & Hood - (2) Sharpe 450 Paint Guns - ATD Touchup Gun - Hutchins Hustler 2000 Speed Sander - Paint Shaker - Auto Light Sheet Metal Puller - Pulling Chains - (2) Apexro Speed Ray Lights - Drying Racks - Many Air Tools Da Sanders - Wurth & Lawson Fastener Cabinets - Cutting Torch Cart & Tanks - Lincoln SP-175T Wire Welder & Cart Single Phase - Airco 225 Amp Stick Welder - Mac 5" Bench Vise - Mac 3/8 Flex Head Torque Wrench - Mac 1/2" Torque Wrench-H - Mac 4 Ton Port-A-Power - Mac Gear Puller - Napa Floor Jack - Napa Power Pro Gas 6.75 Cold Water Power Washer - Jack Stands - 6" Bench Grinder - Cords & Air Hose - MANY ITEMS UNLISTED

Lawn & Garden Misc.

Fimco 15gal Tow-Behind Lawn Sprayer - 12-Volt Agri-Fab 42" Lawn Sweeper - Simplicity 760, 24", 7Hp, Two Stage Walk Behind, Snowblower, Electric Start, Chains - Stihl MS 180c 14" Gas Chain Saw w/Case - Echo CS 410c 18" Gas Chain Saw w/case (6 month old) - Fork & Shovels - Garden Hoses - Coleman Stove & Lantern - Gas Cans - (2) 4' Alum Platforms - Fishing Tackle - Fishing Rods - Werner 8' Fiberglass Step Ladder - Vulcan 17' Multi Task Ladder - 20' Alum Ext. Ladder - Hi-Lift Jack - (2) 6' Fiberglass Step Ladders - (2) Push Type Fertilizer Spreaders - Husky Ice Fishing Sled - Floe Alum ATV 65" Tri-Fold Ramp - (3) Sections of Scaffolding - Johnson Seahorse QD-10Hp Boat Motor - (3) 6 Gal- Gas Tanks - Champion 3000lb. ATV Winch - Used Lumber - Sear 10" Radial Arm Saw - Hand Sprayers - (8) Insulated Construction Blankets



- Husqvarna GT 52XLS Lawn Tractor, 26HP, 52" HD Deck, 412Hrs (Like New)



- Husqvarna DRT 900-H 17" Rear-Tine Dual-Rotating Tiller (Like New)



- Kenmore Elite (white) Chest Freezer, 20cu

Bid Online at  HiBid
jensenauctions.hibid.com

Thomas & Carla Southworth - Owner



VIEW AUCTION ON:
www.jensenauctionsmn.com OR
www.auctionsgo.com(search by Jensen)

AUCTIONEER:
 Dennis
 Lic. #74-25-005

Terms: Cash or good check w/ proper I.D. required. 10% buyers fee applies (\$1,000 cap per item). Credit card fees apply. Items MUST be picked up on May 30th or 31st. There will be NO shipping available. Items are sold as is, where is. Not responsible for accidents. View complete terms on Hibid.