



bgeSM

AN EXELON COMPANY

September 2024

Erdman to Loch Raven Transmission & Substation Projects

BGE | Project Updates

Project Team

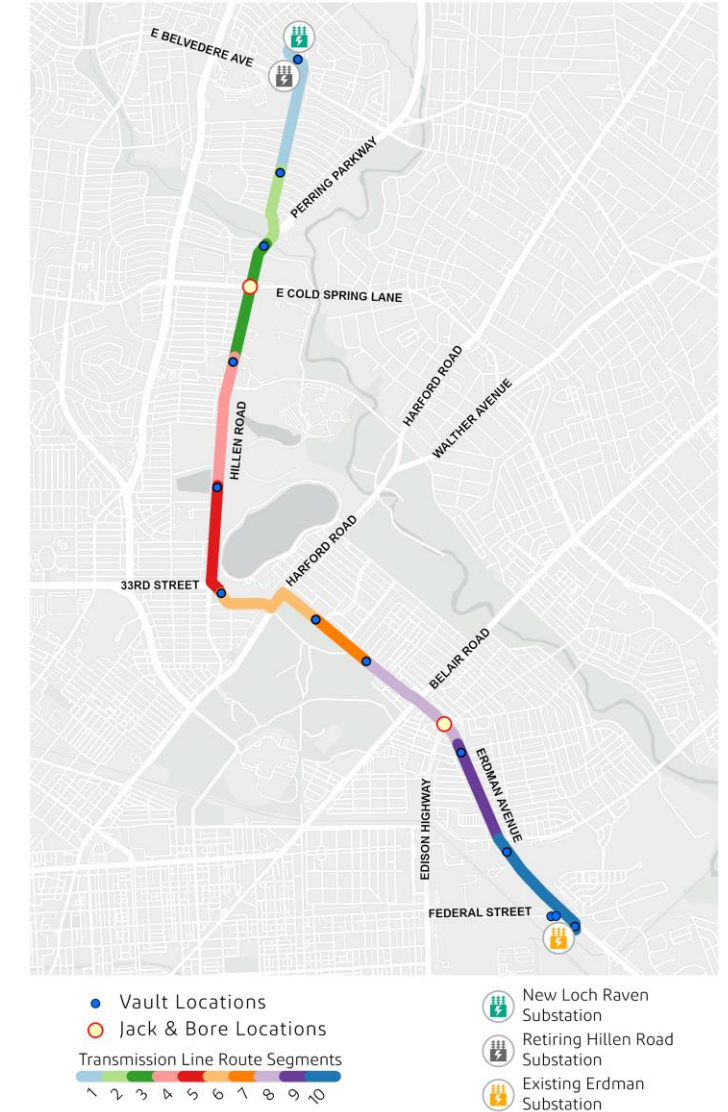
- Tanisha Walton – Project Manager, BGE
- Chandra Chithaluru– Environmental Project Manager, BGE
- PJ Benson – Professional Engineer, Black and Veatch
- Kelly Kosino – Century Engineering
- Gary Witherspoon – Community Outreach, Assedo Consulting

Meeting Purpose

- Project Location & Timeline.
- Transmission Line Updates.
- Loch Raven Substation Updates.
 - Upcoming Construction Activities.
 - Wall Panel Updates.
 - Monthly Vegetation Maintenance.
 - Snow Removal during winter.
- Fall Open House.

Project Location

- The Erdman Substation is on the southwest corner of Erdman Avenue and Federal Street.
- Installation of a 115kV Underground Transmission Line (about 4.5 miles long) will begin at the Erdman Substation and connect to the Loch Raven Substation.
- The new Loch Raven Substation will be on the northwest corner of Ramblewood Road and Hillen Road and replace the Hillen Road Substation across the street.



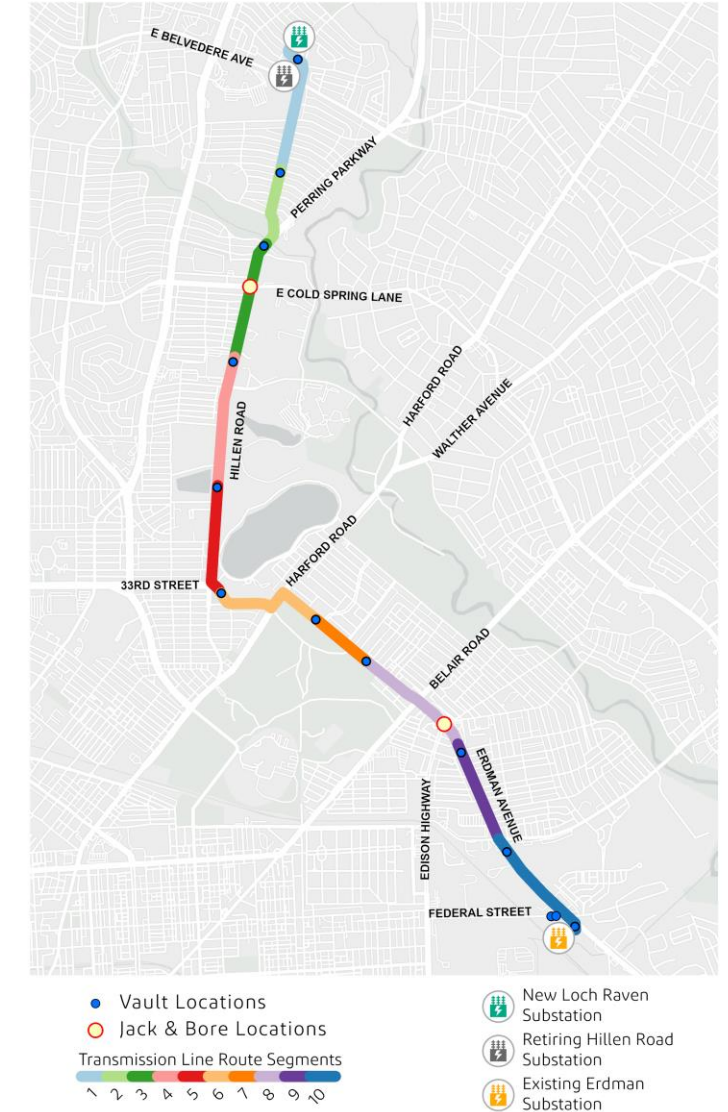
Project Timeline & Work Hours

	Status	Construction Start	Construction End
Erdman Substation	Active	Early 2024	Early 2027
Loch Raven Substation	Upcoming	Fall 2024	Early 2027
Transmission Line*	Upcoming	Early 2025	Early 2027
Loch Raven Distribution Feeders	Active	Spring 2024	Fall 2027
Hillen Road Substation Retirement	Upcoming	Fall 2027	Spring 2028

- Construction operations and schedules will vary across daytime and overnight work.
- All construction start and end times are estimated.
- *Weekend and overnight work is expected.

Maintenance of Traffic Plan – Transmission Line

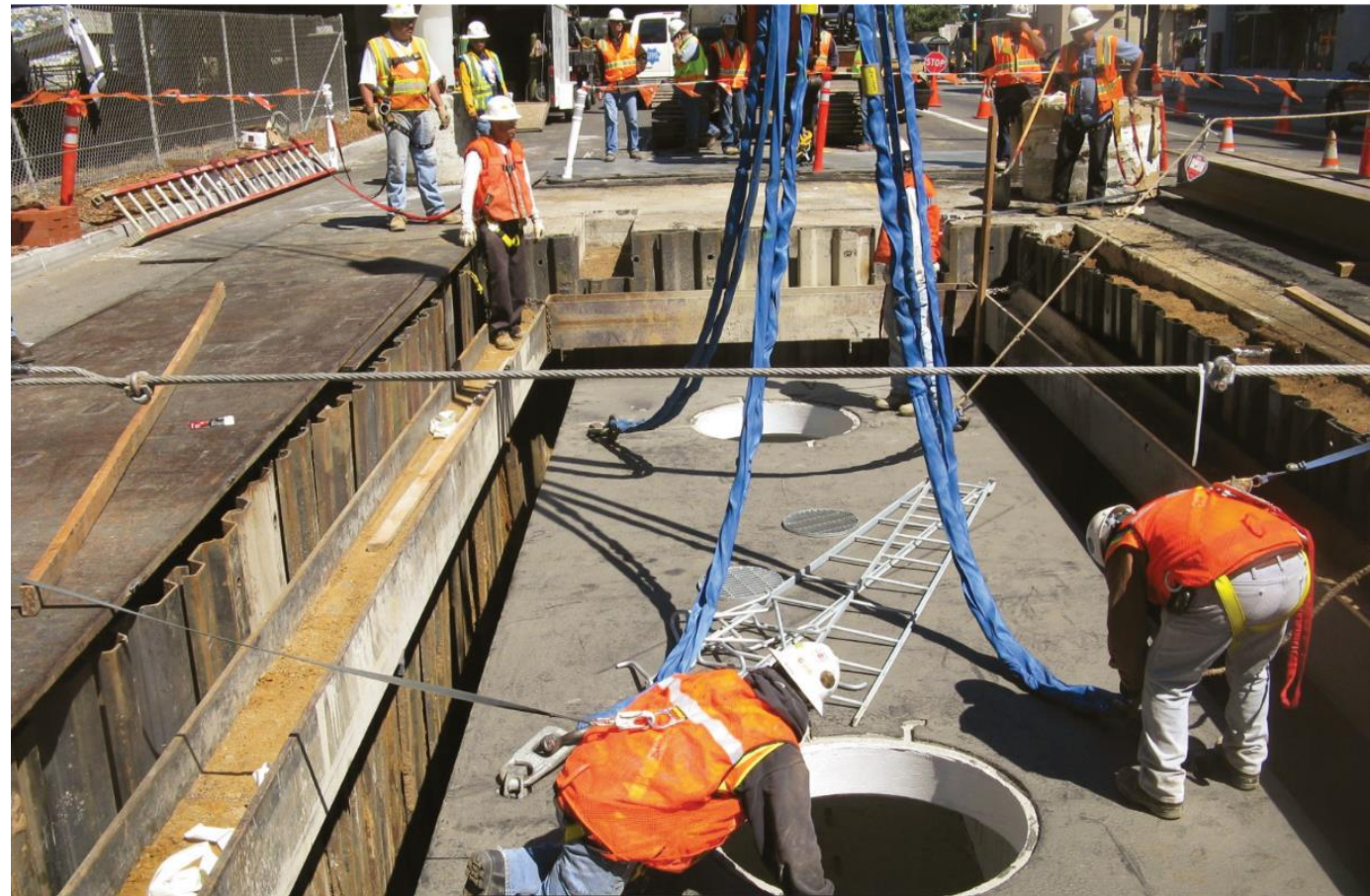
- Estimated Start: **January 2025**
- Estimated End: **Early 2027**
- Construction activities will occur simultaneously along different parts of the project corridor.
- Access to homes, businesses, and schools will be maintained. Any adjustment will be coordinated with property owners in advance.
- All temporary lane shifts, on-street parking restrictions, bike lane changes, and road closures near vault or jack and bore locations will remain in place 24/7.
- Sidewalks temporarily impacted by construction will be detoured to nearby streets during construction.
- Construction noise may be noticeable during work hours.



Maintenance of Traffic Plan – Transmission Line

11 Vault Locations

- Loch Raven Substation.
- Hillen between Winford and Heathfield roads.
- SB Hillen Road at Stonewood Road.
- SB Hillen Road at Jenkins Hall Entrance.
- NB Hillen Road south of Kennewick Road.
- E 33rd Street east of Hillen Road.
- Erdman Avenue at Norman Avenue.
- Erdman Avenue at Woodstock Avenue.
- WB Erdman Avenue north of Cliffmont Avenue.
- WB Erdman Avenue south of Sinclair Lane.
- Erdman Substation.



Maintenance of Traffic Plan – Transmission Line

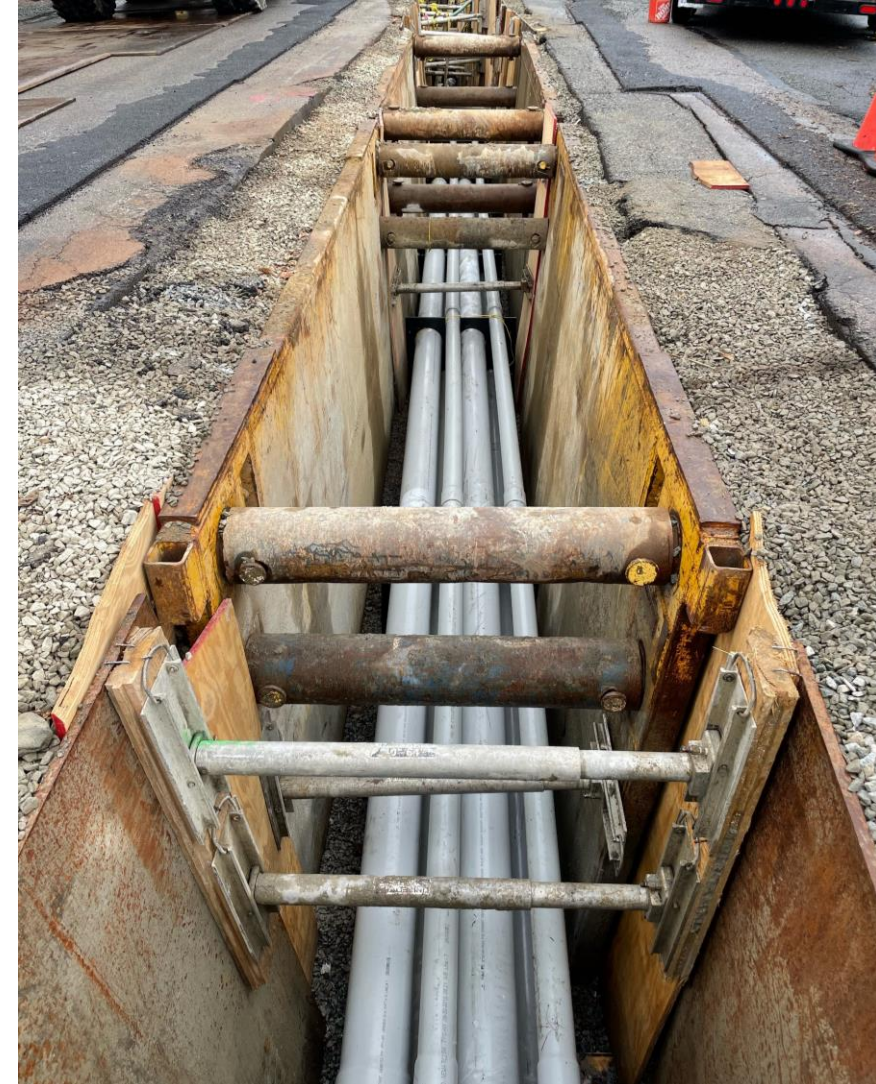
Duct Bank and Cable Installation

- Trench Installation.
- Jack & Bore Locations.
 - Segment 3: Hillen Road at E. Coldspring Lane.
 - Segment 8: Erdman Avenue at Edison Highway.

Planned Daily Detour Locations.

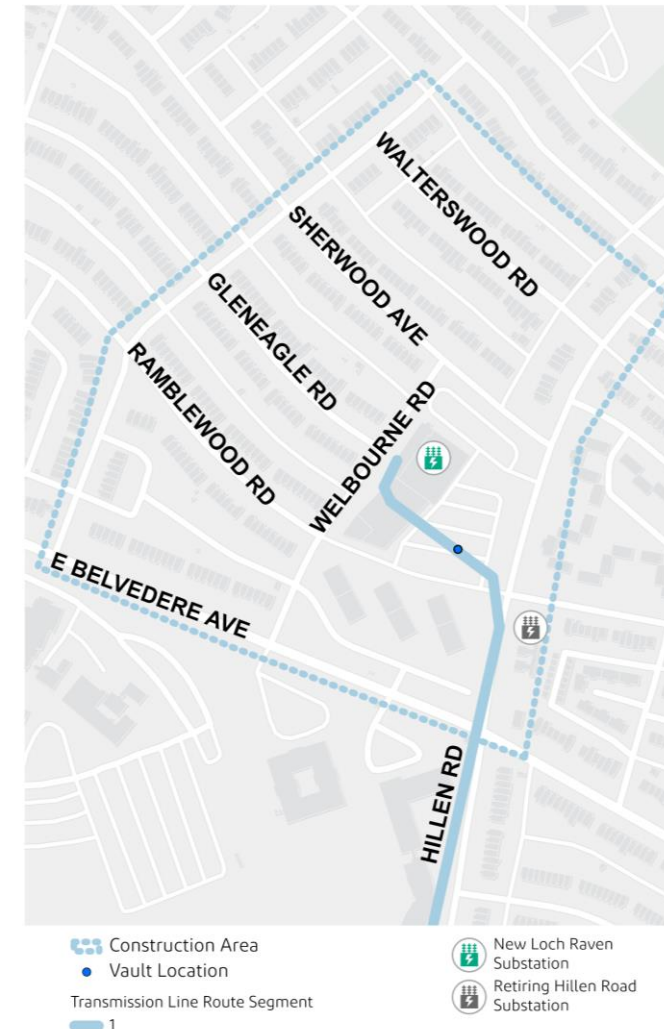
- Segment 6: NB Harford Road from 32nd St to Erdman Avenue.
- Segment 8: Erdman Avenue from Parklawn Avenue to Belair Road.

Cable Pull and Splicing.



Maintenance of Traffic Plan – Loch Raven Substation Distribution

- Estimated Start: **Week of September 23, 2024**
- Estimated End: **Late-November 2024**
- Construction crews will remove and renew overhead utility, install anchors, and install cables through new ducts along Ramblewood, Welbourne, and Hillen roads and Sherwood Avenue.
 - Sidewalk closures, temporary crosswalks, on-street parking restrictions, and shifted two-way travel lanes are anticipated.
 - Alleys will be closed to main traffic but open for local traffic.
- Inside the Loch Raven Substation area, crews will begin grading changes and installing pre-cast walls.



Loch Raven Substation Rendering



Loch Raven Substation
(View from Sherwood Avenue &
Wellbourne Road)

Loch Raven Substation Wall Panels

- BGE shared a survey to collect community input on the wall panel color options between August 1 to August 23, 2024.
- Based on the survey, the community chose the color Brownstone as the preferred choice for the Loch Raven Substation Wall Panels.
- Thank you to all who participated!

 **bge**SM
AN EXELON COMPANY

BGE Erdman to Loch Raven Transmission & Substation Project

Loch Raven Substation Wall Design

BGE is seeking input from the community on the preferred color option for the wall panels that will separate the brick on the exterior of the new Loch Raven Substation. Since you will see the exterior the most, we would like to use your preferred color option in the final design and construction. Kindly respond to this one-question survey by **Friday, August 23, 2024**. Thank you!



1. Please select the preferred wall panel color that will separate the brick for the new Loch Raven Substation:

☐ A - Polar White

☐ B - Regal Gray

☐ C - Almond

☐ D - Sandstone

☐ E - Brownstone



Loch Raven Substation Maintenance

- Notices of overgrown vegetation near Loch Raven Substation were received in June and July 2024.
- BGE staff met in person in July to discuss maintenance at Loch Raven Substation and ensure the community's concerns were heard.
- **Outcome:** BGE will complete vegetation maintenance and clean-up at the Loch Raven Substation every month. During winter months, BGE will also ensure proper snow removal and salting.



Fall Project Open House

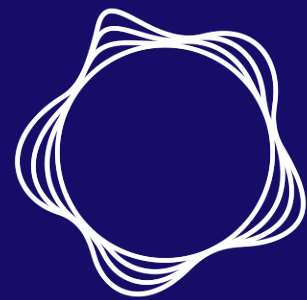
- BGE invites you to our Open House where we will share project information and provide resources.
 - **Location:** Maryland Center for the Arts
 - **Address:** 3400 Norman Ave., Baltimore, MD 21213
 - **Date:** Tuesday, October 22, 2024
 - **Time:** 6:00 p.m. to 7:30 p.m.



June 2023 Project Introduction Open House

Questions?

Thank you



bgeSM

AN EXELON COMPANY