

SUNTERRA PARK

Sharm El Sheikh

CONCEPTUAL DESIGN

AZURE | ARCHITECTS





Well rounded living in the well connected address of Sharm EL Sheikh

Sunterra is much more than a mixed-use destination, lying at the intersection of Salam street & the tower Road. It is a holistic outlook on integrated discovery, where every detail is fully-developed around your needs, dictating a never-ending journey of intrigue. A new degree of extraordinary, inviting all corners of the world into one cosmopolitan context where bountiful street wandering and atmospheric accessibility are key.

The result ?

A progressive vision, boasting an unrivaled host of business excellence, inspirational nature, world class hospitality and culinary adventures, perfected by retail luxuries at every touchpoint.

Sunterra;

a well rounded mixed-use destination where vibrancy amplifies and energy multiplies.

A whole new world of uninterrupted convenience

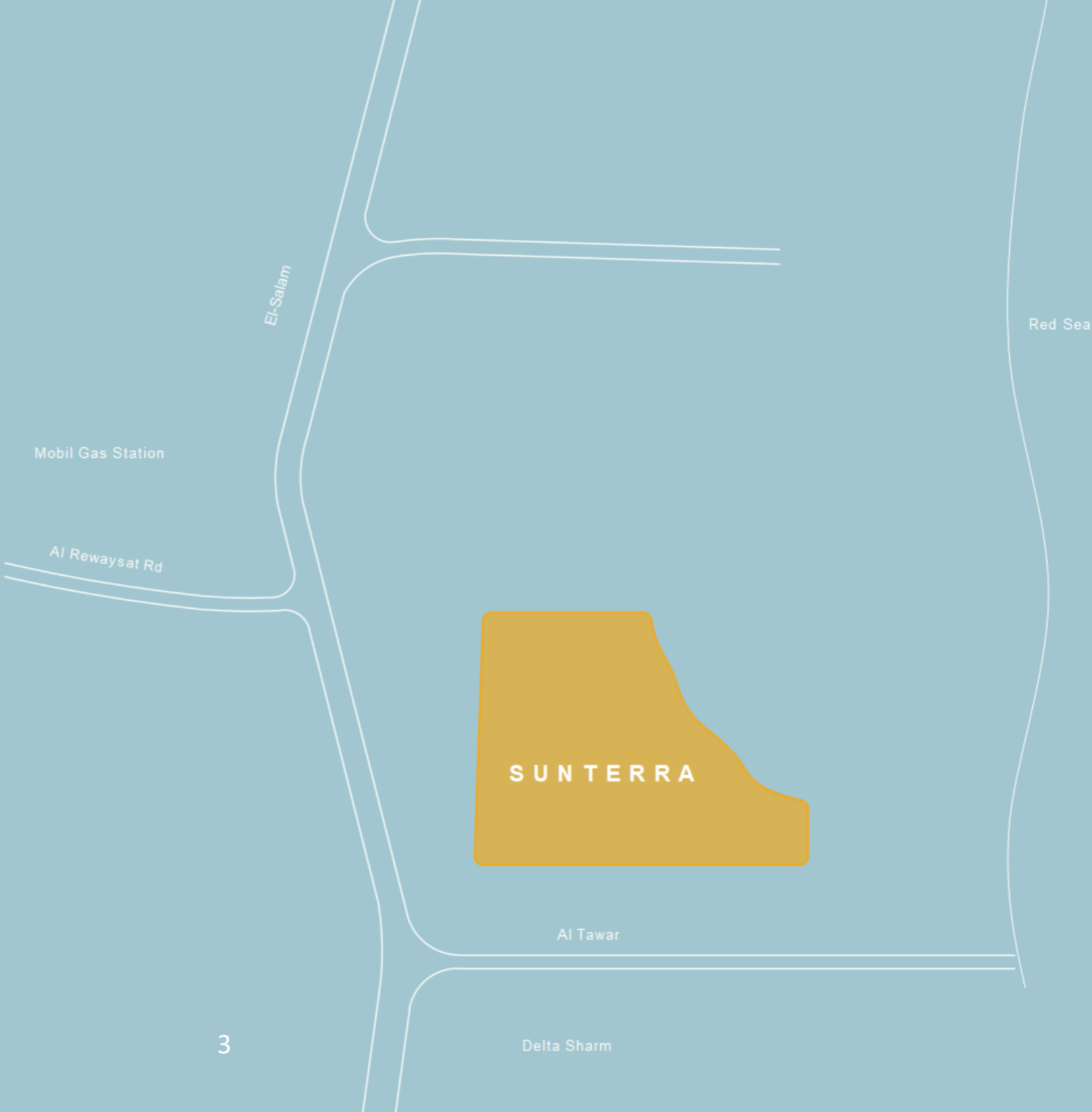
Living at Sunterra translates to life unfolding in every direction, whether within the mixed-use development or outside your intimate world. Crowning a prime location at the meeting point between Al Salam Road & El-Tower Street, Sunterra boasts two different entrances, To facilitate traffic-free accessibility all day long. Handpicked with residents' convenience in mind.

15 mins to
Sharm El Sheikh
International Airport

2 mins
from the Sea

4 mins to
Neama Bay

5 mins to
Old market





- T O W N H O U S E
- A P A R T M E N T S (2 B E D R O O M S)
- S T R I P M A L L
- S T A N D A L O N E
- A P A R T M E N T S (1 & 3 B E D R O O M S)
- H O T E L
- N U R S E R Y
- K I D S A R E A
- P L A Y G R O U N D S
- G Y M



PROJECT
COMPOSITION



01 STAND ALONE



02 TOWNHOUSE



03 APARTMENT



04 STRIP MALL



05 HOTEL





V ZONE



FRONT SHOT



BACK SHOT

THE FUN AREA, OPEN-ACCESSIBLE AREAS ARE THE KEY FOR SUCCESS IN ANY PLACE! AND WHERE YOU'RE LIVING SO IT'S SO MUCH FUN AND COMFORTABLE. THAT'S WHERE THE FUN CITY EXISTS.

EXTERIOR SHOT



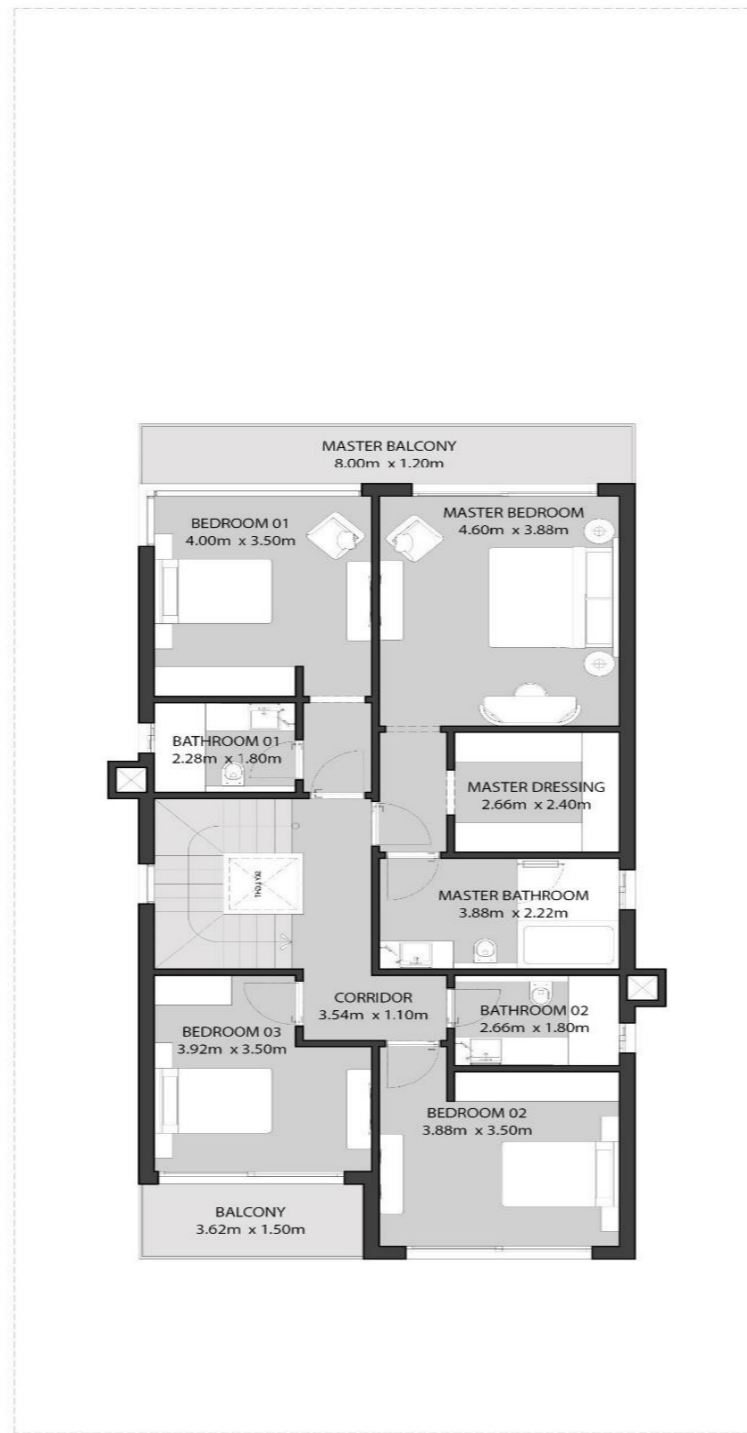
EXTERIOR SHOT



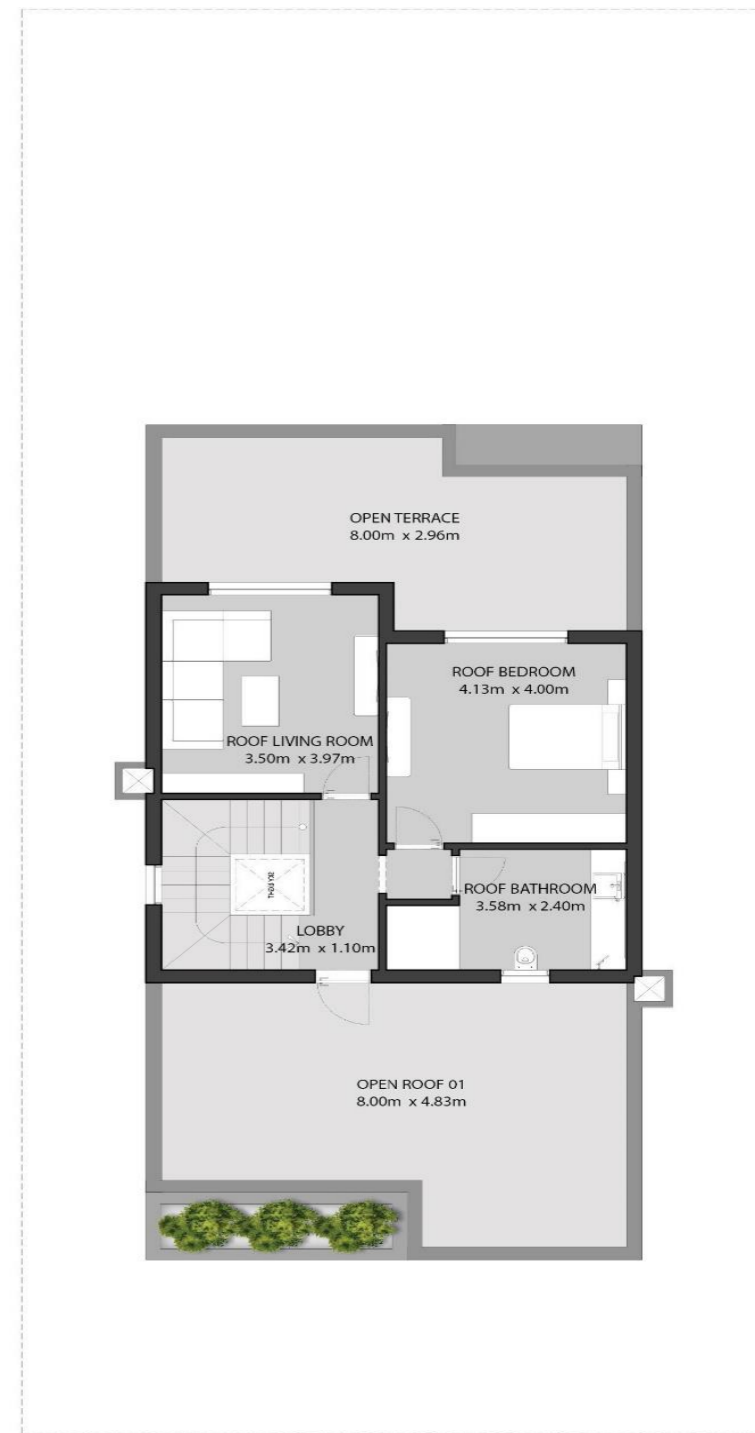
STAND ALONE LEFT (350.00) M2



GROUND FLOOR 144.00 M2

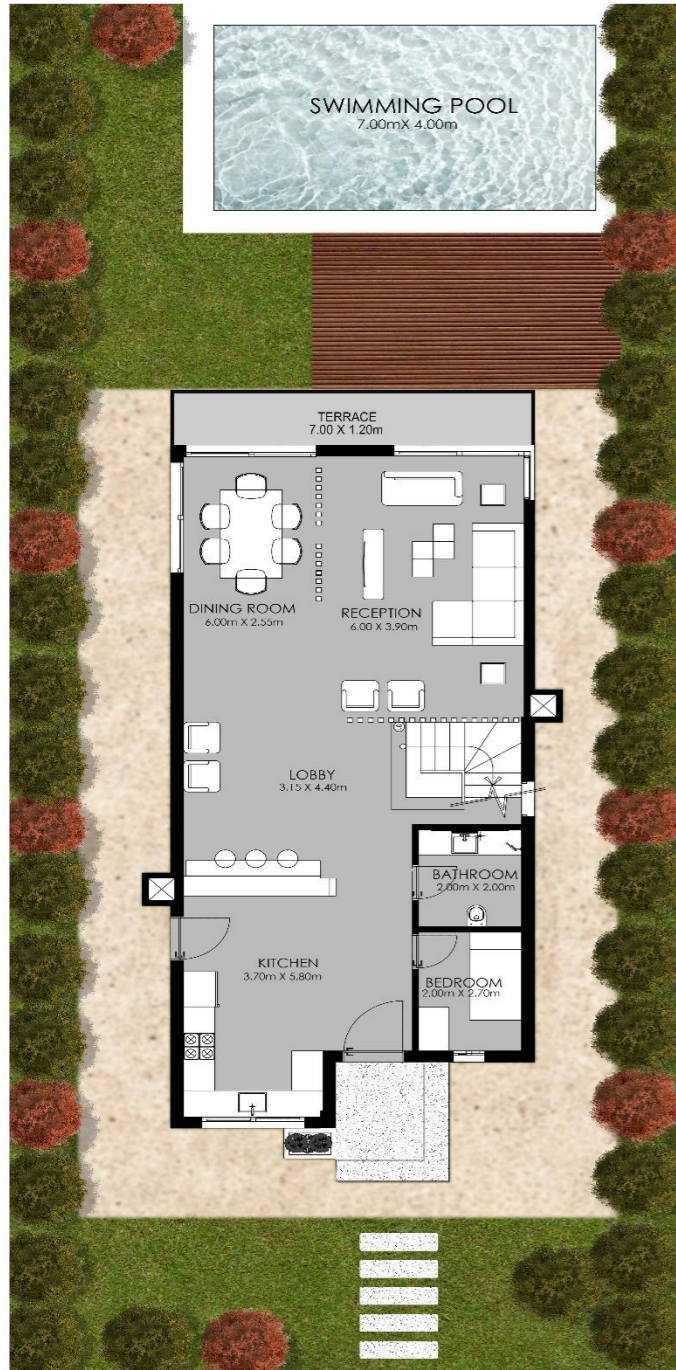


FIRST FLOOR 144.00 M2

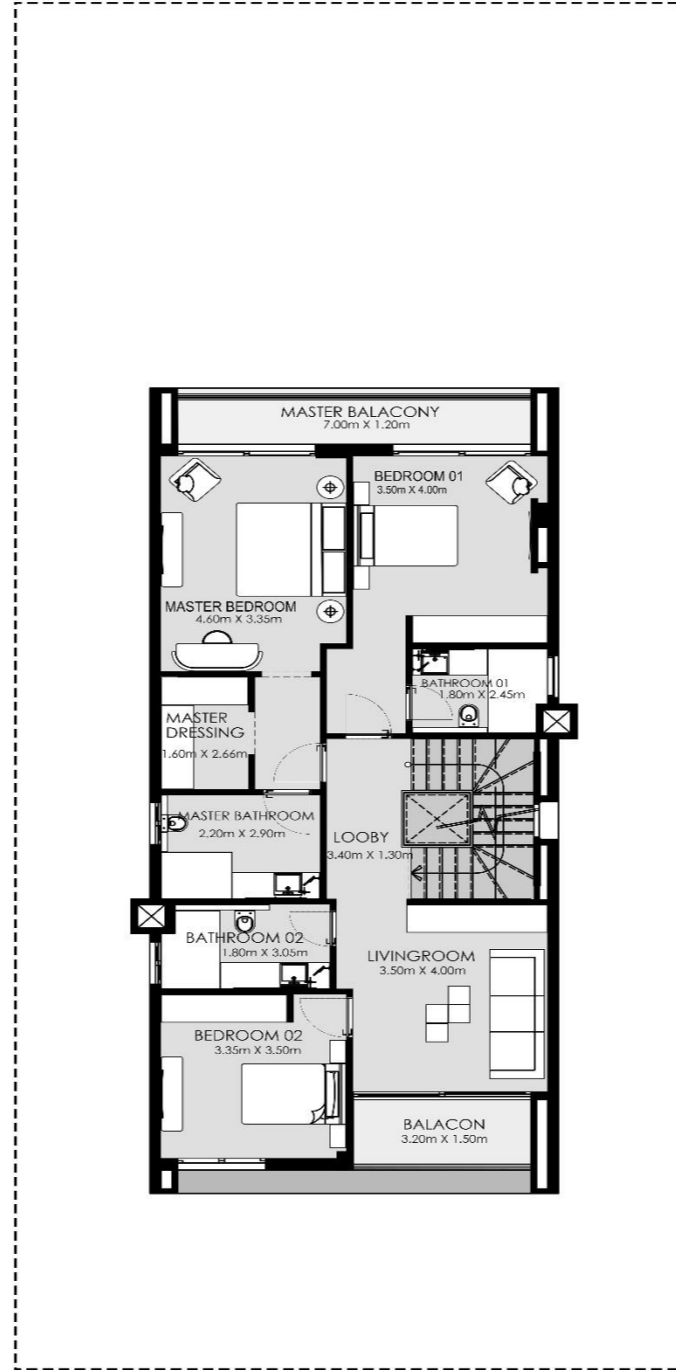


ROOF FLOOR 62.00 M2

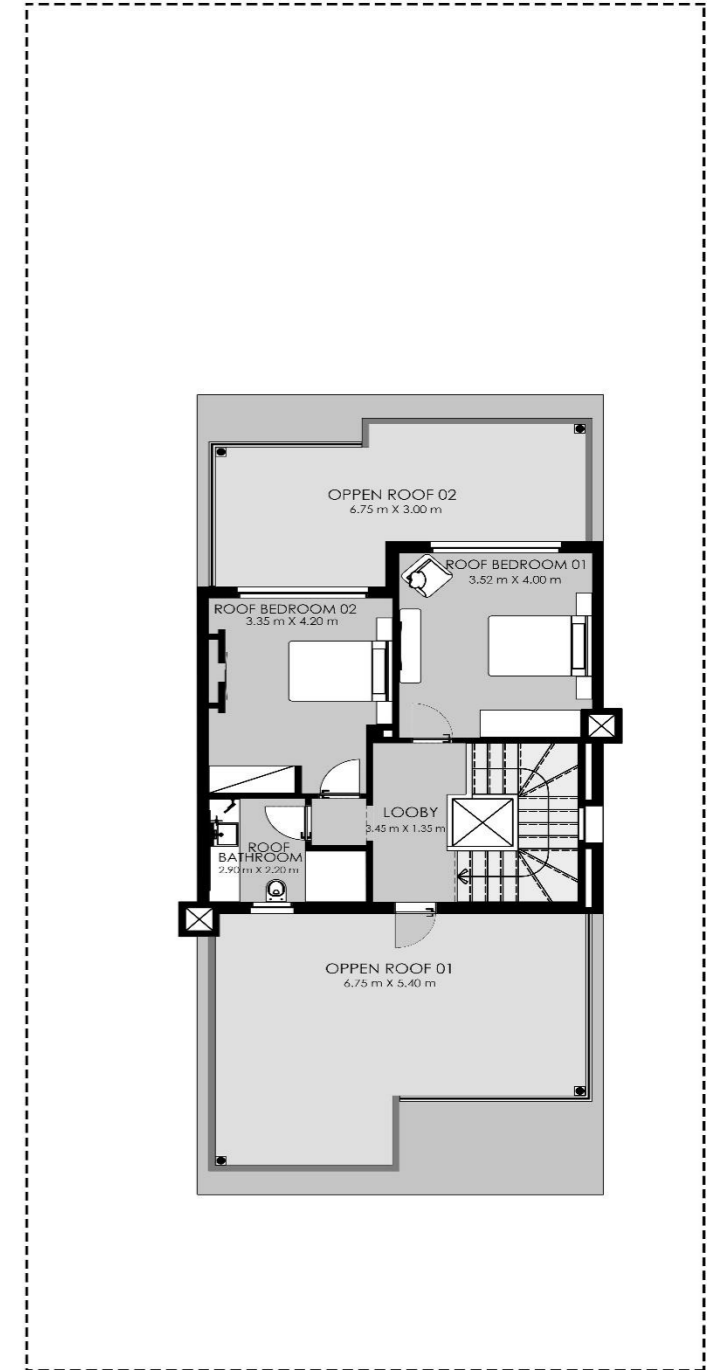
STAND ALONE (315) M2



GROUND FLOOR 129 M2



FIRST FLOOR 129 M2



ROOF FLOOR 57 M2

T ZONE







ENTRY GATE

BALCONY

TERRACE GARDEN

PRIVATE FENCE

ROOF GARDEN



PRIVATE FENCE

ROOF TERRACE

ROOF GARDEN

BALCONY

PRIVATE GARDEN





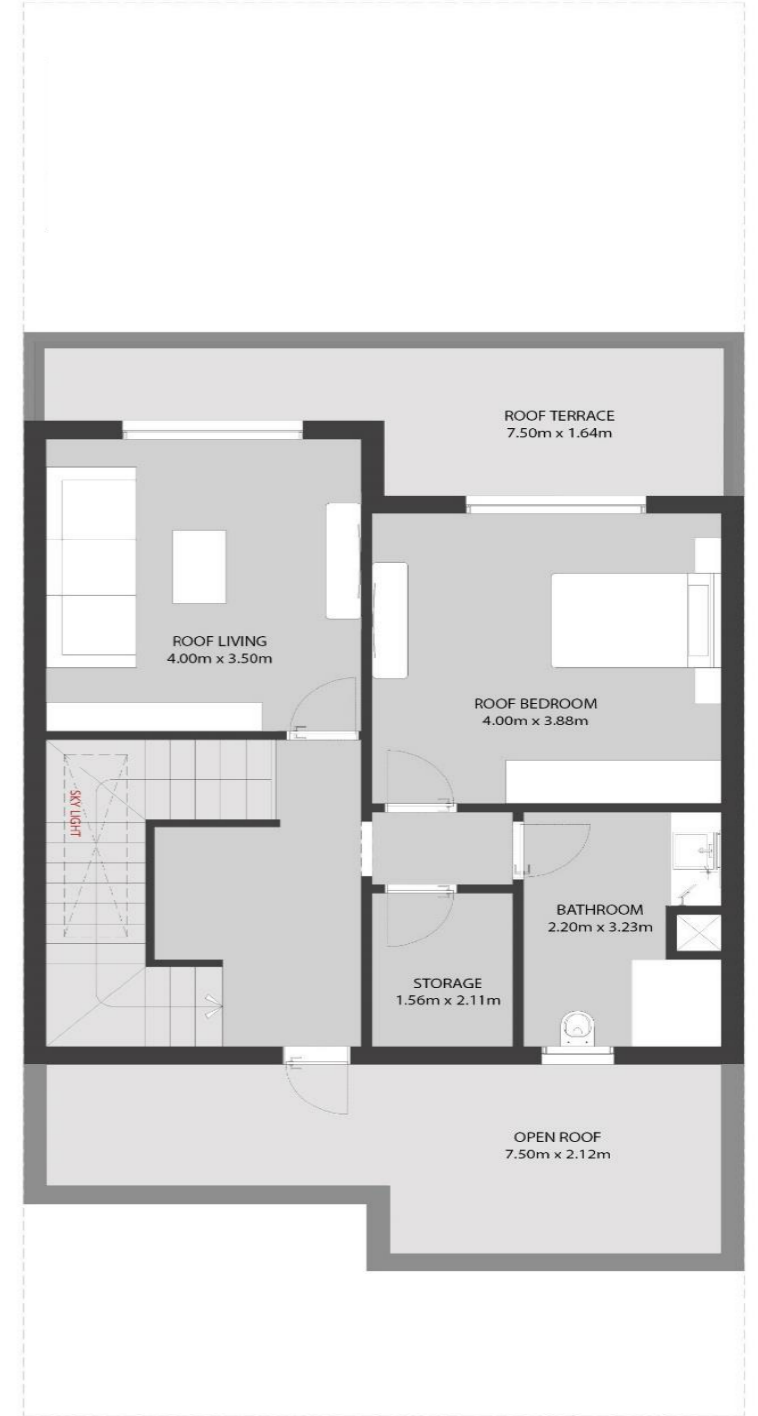
TOWNHOUSE CORNER LEFT (258.00) M2



GROUND FLOOR 95.60 M2

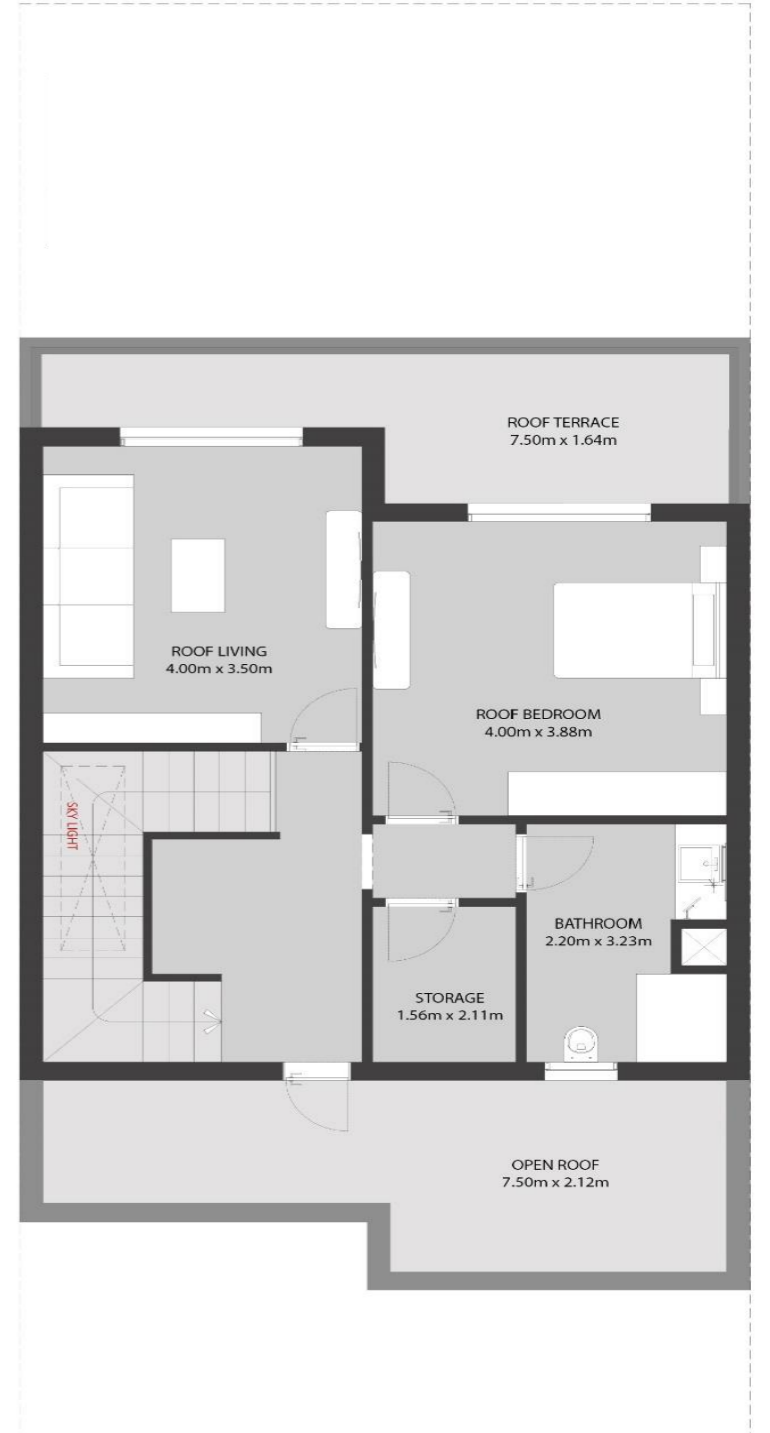
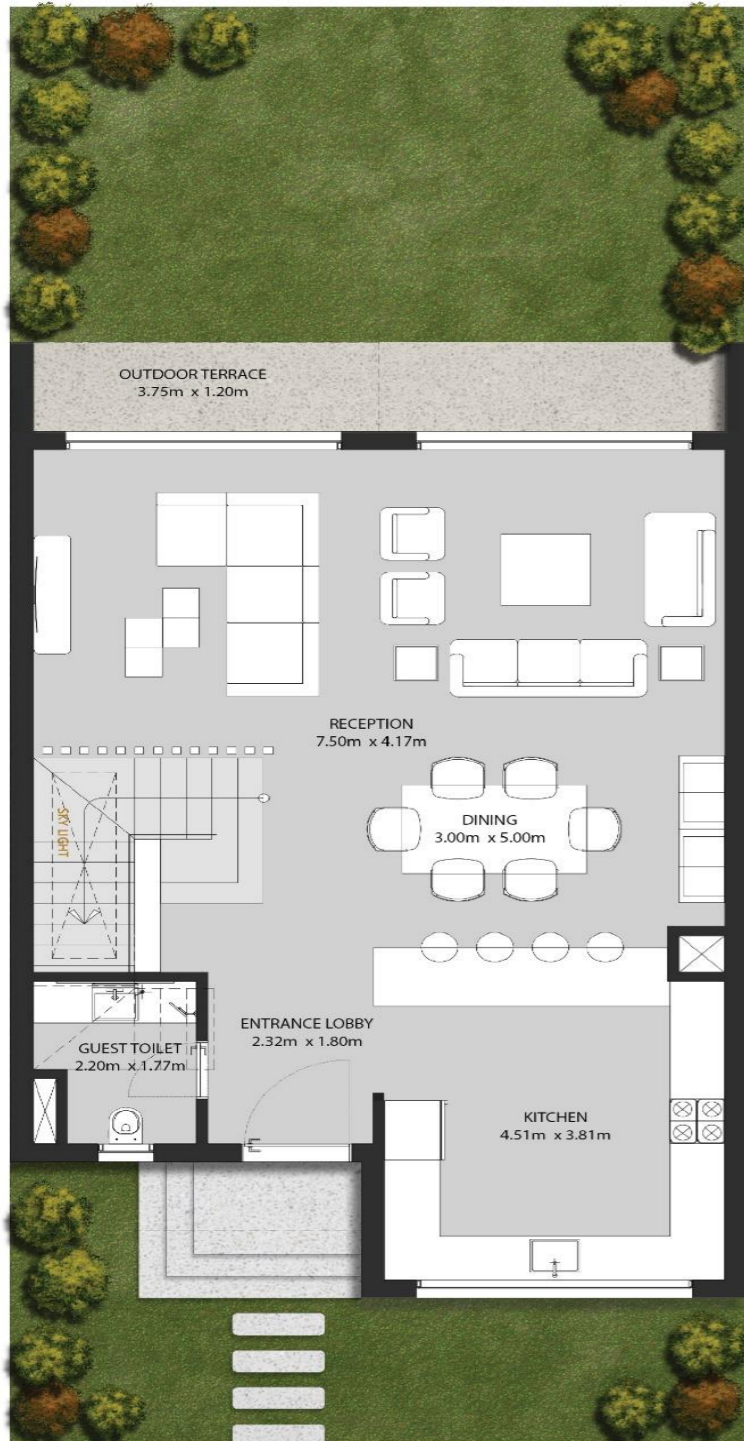


FIRST FLOOR 95.60 M2



ROOF FLOOR 66.80 M2

TOWNHOUSE MIDDLE LEFT (258.00) M2





(2 BEDROOMS)

APARTMENT | SUNTERRA PARK





TERRACE GARDEN

ROOF GARDEN

PRIVATE FENCE

ENTRY GATE

BALCONY

A5
VILLA B

A5
VILLA B



ROOF GARDEN

ROOF TERRACE

PRIVATE FENCE

PRIVATE GARDEN

BALCONY

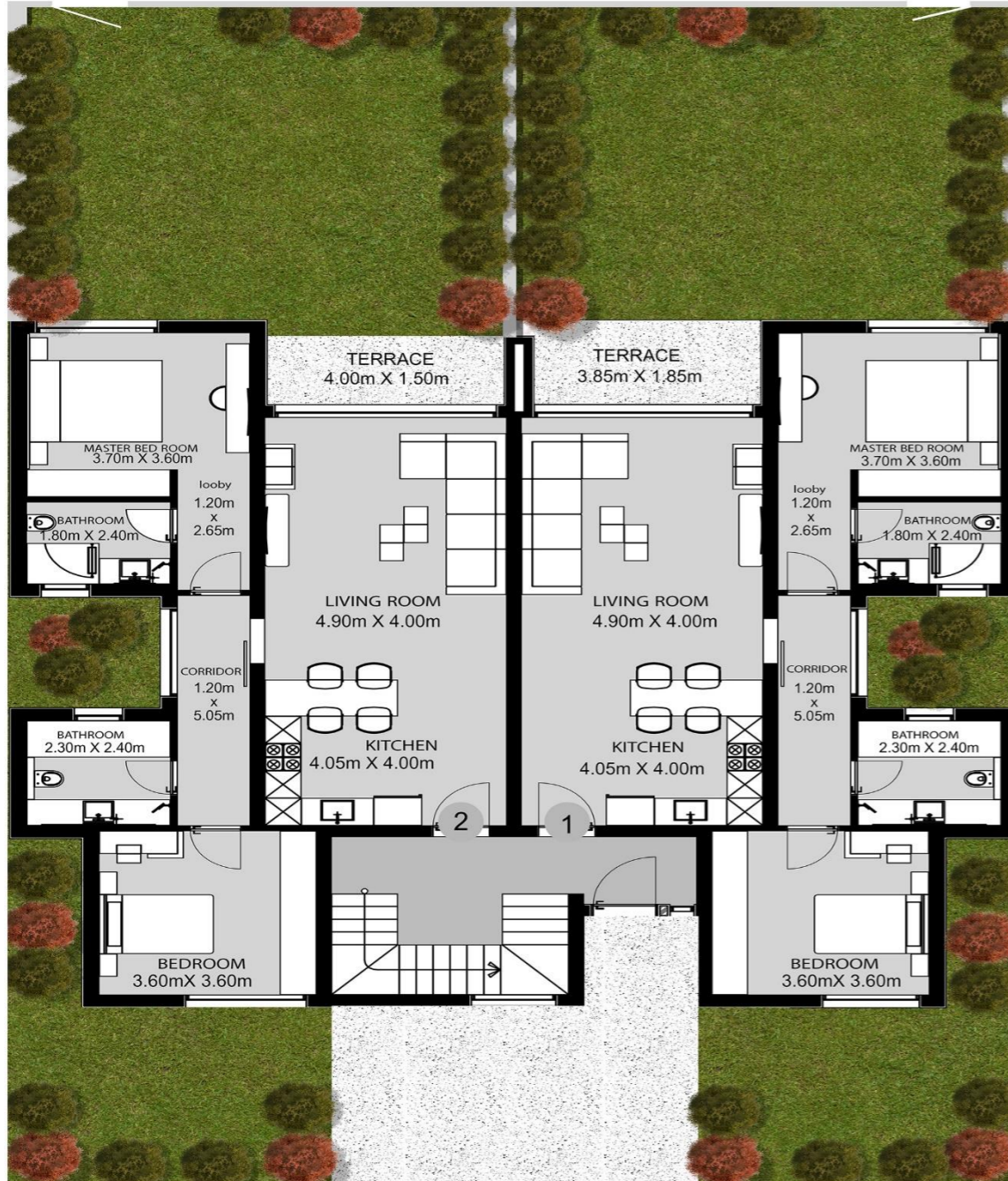




TYPE 2 BEDROOM

MIDDLE (117 M²)

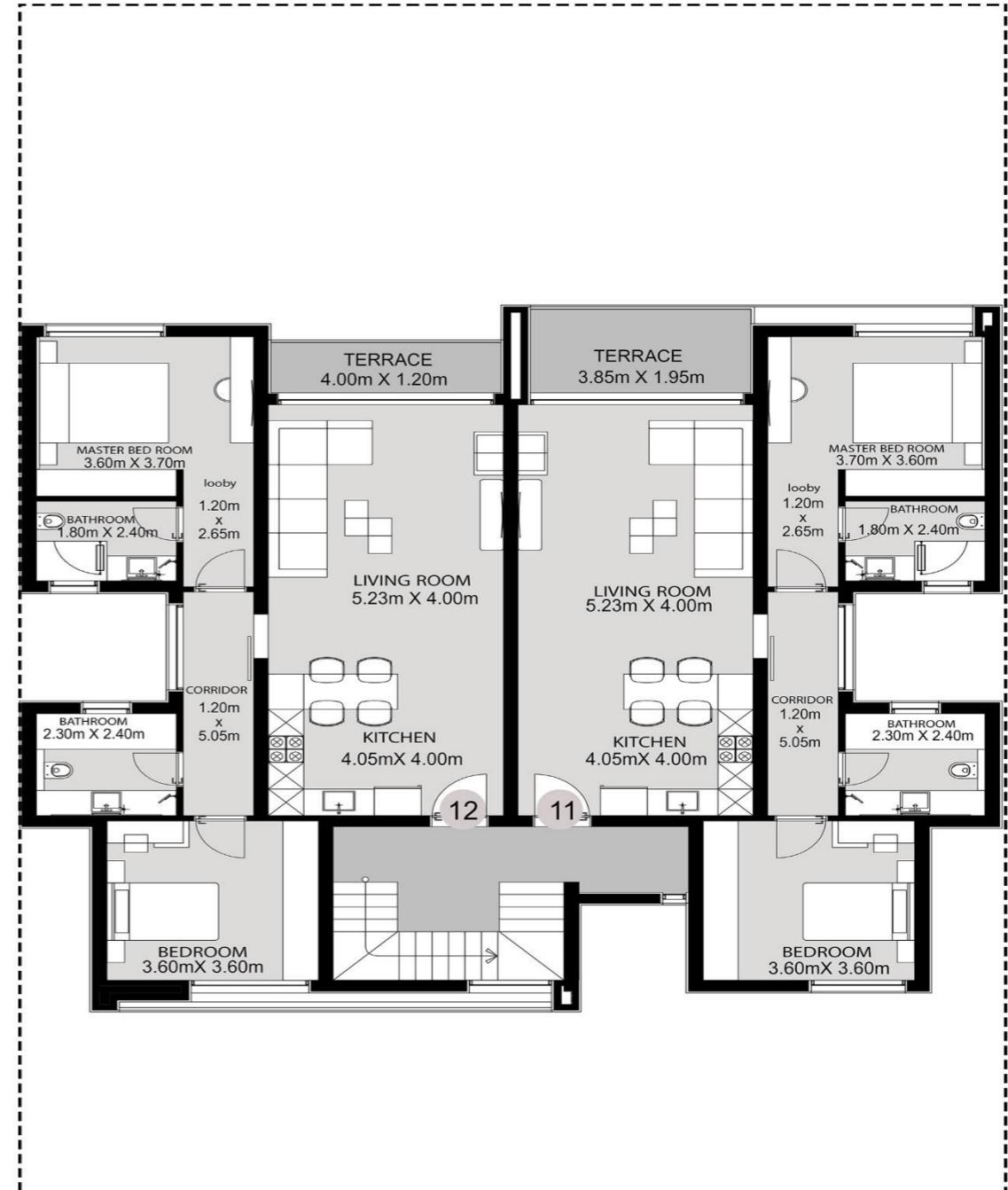
CORNER (118 M²)



GROUND FLOOR

MIDDLE (118 M²)

CORNER (120 M²)



FIRST FLOOR

TYPE 2 BEDROOM

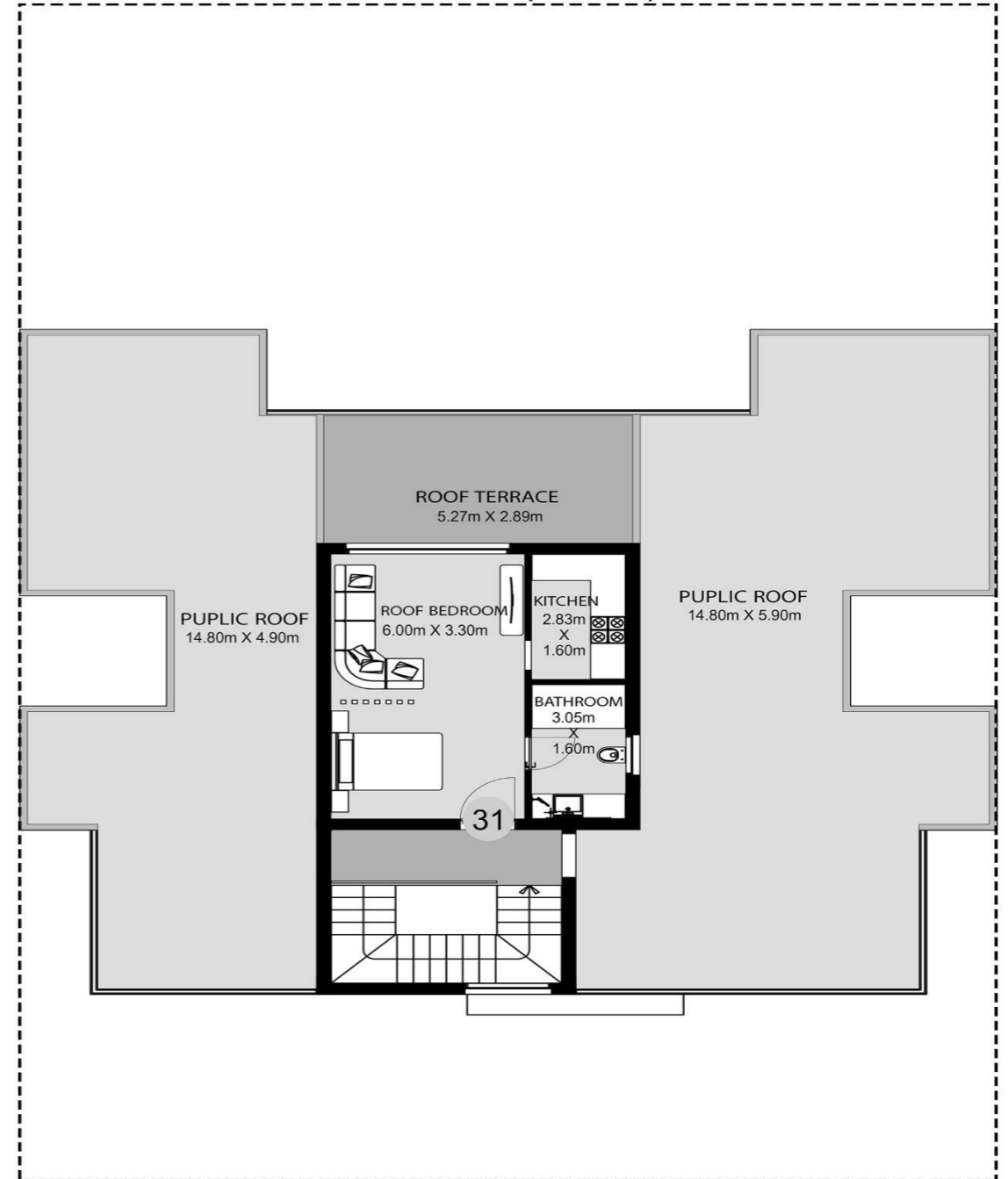
MIDDLE (112 M2)

CORNER(115 M2)



SECOND FLOOR

STUDIO (42 M2)



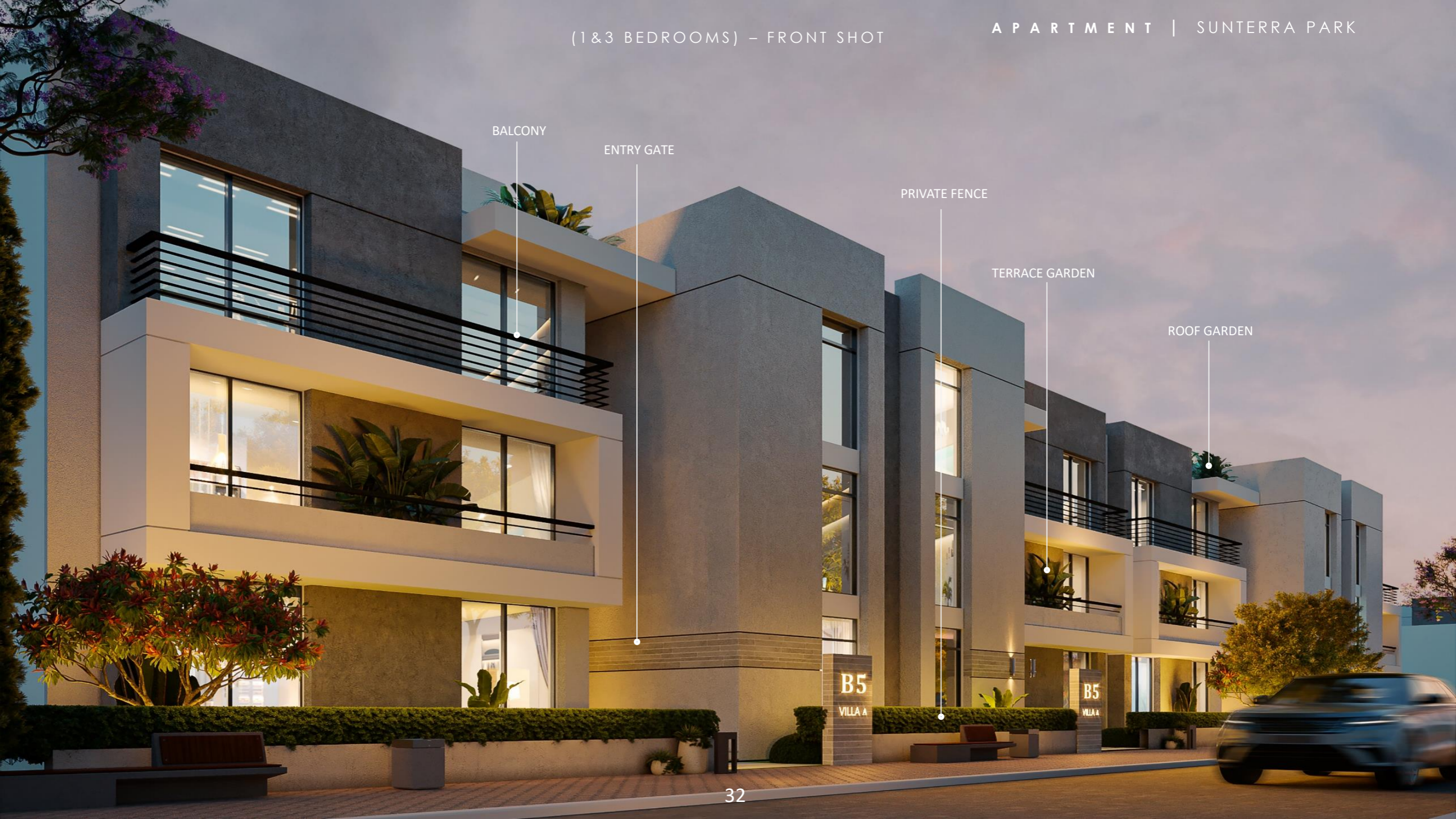
ROOF FLOOR



L ZONE







BALCONY

ENTRY GATE

PRIVATE FENCE

TERRACE GARDEN

ROOF GARDEN

B5
VILLA A

B5
VILLA A



PRIVATE GARDEN

BALCONY

ROOF TERRACE

PRIVATE FENCE

ROOF GARDEN

TYPE 1 & 3 BEDROOM

1 BED (77 M2)

3 BED (145 M2)



GROUND FLOOR

1 BED (77 M2)

3 BED (145 M2)



FIRST & SECOND FLOOR

STUDIO (40 M2)



ROOF FLOOR





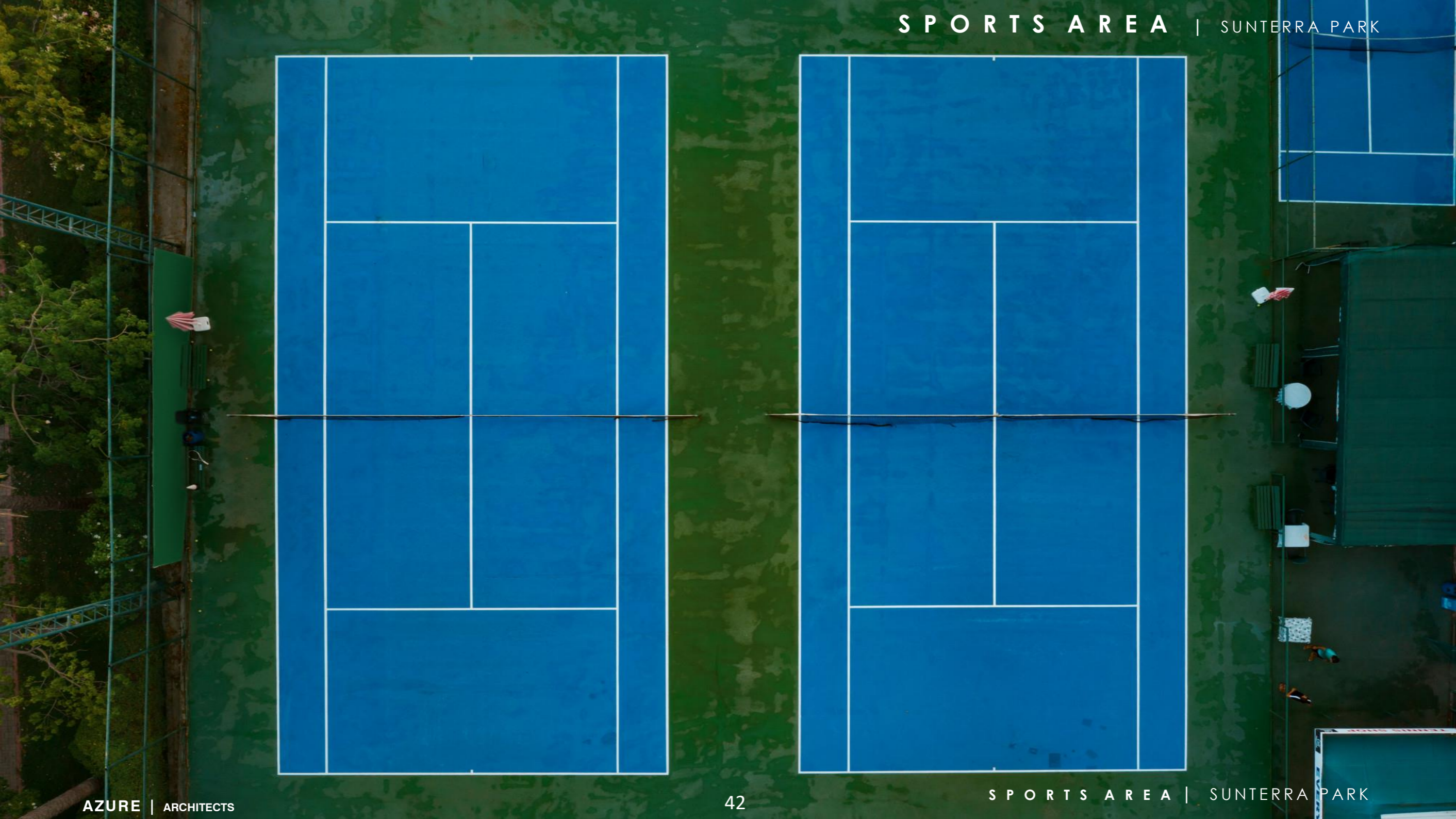




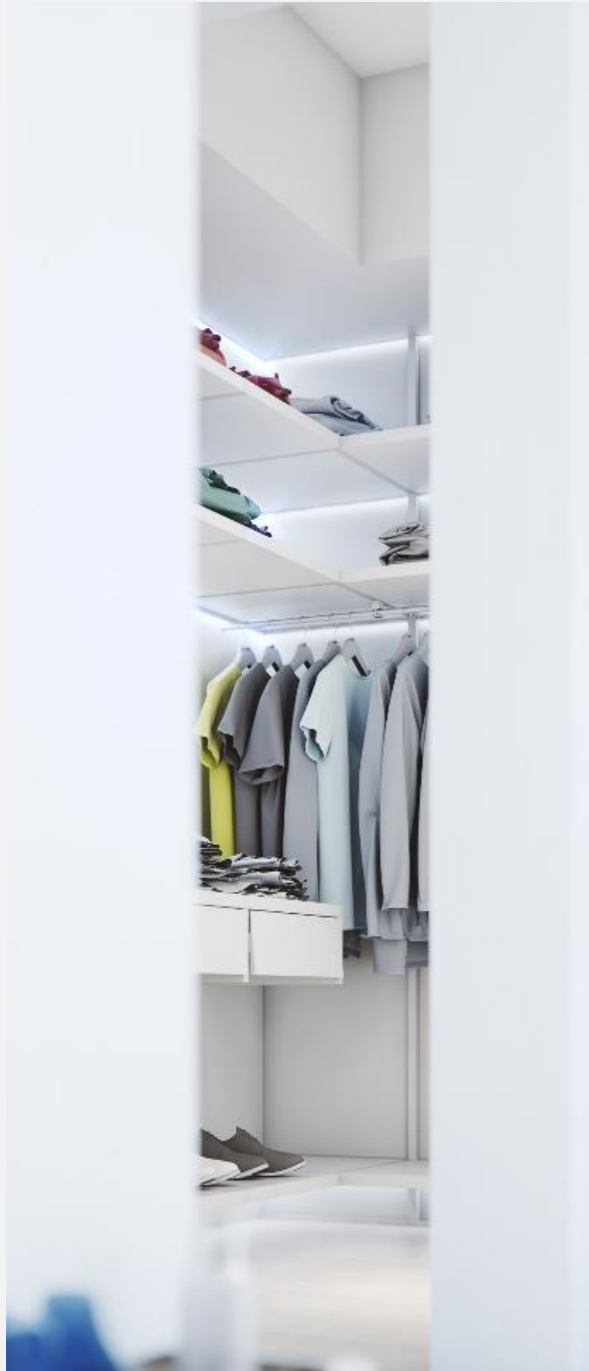


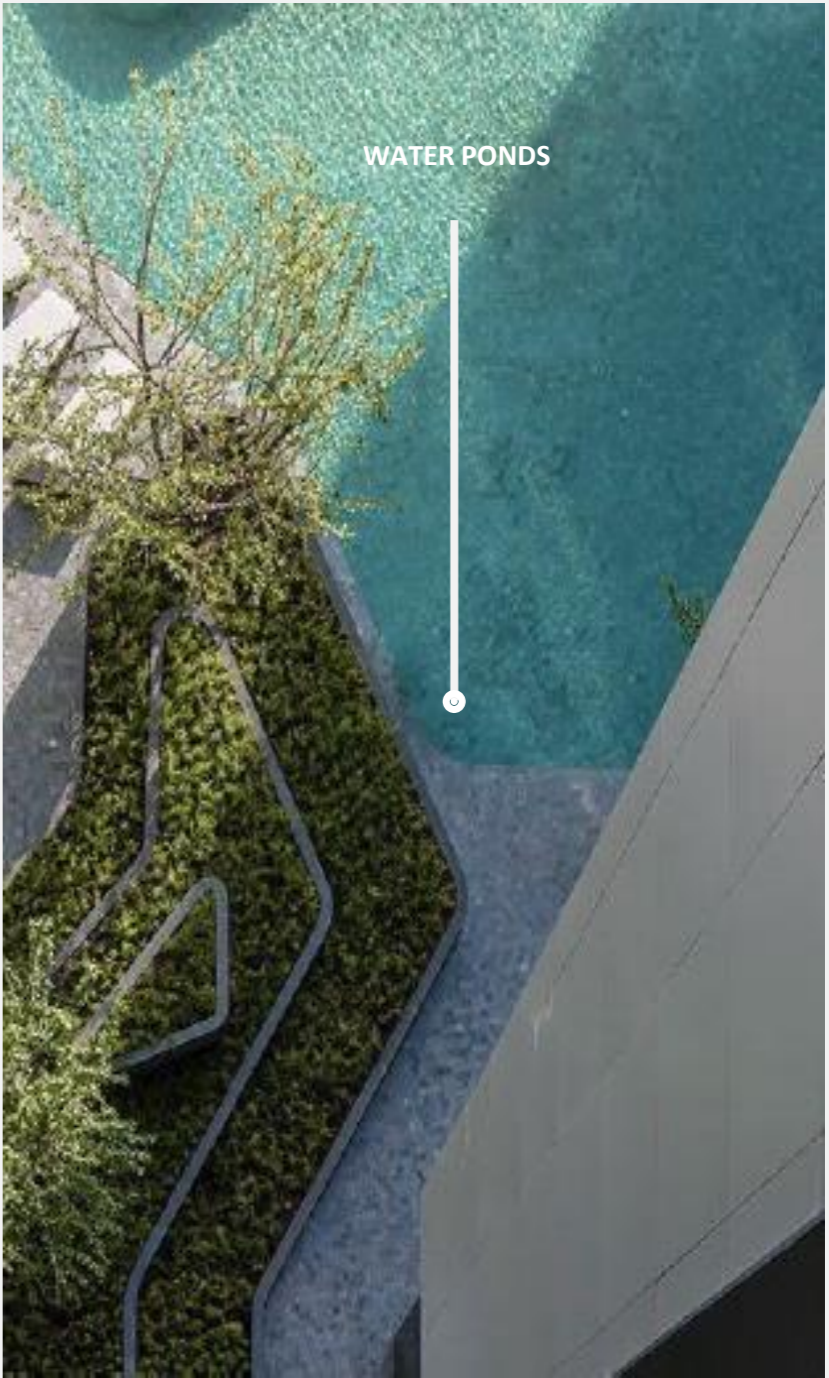














WOODEN FLOWER BOX



LANDSCAPE WATER FEATURE



PAVEMENT TEXTURES

Life in multicolor

A woman with long hair tied back, wearing a white tank top and dark shorts, is running on a paved path in a park. She is wearing large headphones. The scene is set during sunset or sunrise, with a warm, golden light. In the background, there are trees, a building, and a street lamp. The overall atmosphere is peaceful and active.

Live in a trendsetting community, guided by ultimate interconnectivity and delightful walkability.

Recharge in a sprawling central park and allow soothing nature to restore balance to your soul, body and mind.

Shop where world-class brands and stylish boutiques never fail to impress.

Dine in artisanal bistros and fine restaurants, guaranteeing to satisfy your taste buds.

Immerse in world leading hospitality and let royal treatment teleport you to an otherworldly dimension.



CAR PARKS



SEATING AREAS



SPA & MASSAGE



SHOPPING MALL



SWIMMING POOLS



GYM



ELEVATOR



SECURITY GATES



WASTE COLLECTION SERVICE



FACILITY MANAGEMENT



24 HOUR SECURITY & MONITORING



CLEANING EXTERIOR FACADES



KIDS AREA

SUNTERRA

Park

