



Ranked in the **TOP 100** Manufacturers according to *Window & Door Magazine*.

STANDARD FULL COMPOSITE JAMBS

While many frame systems use a finger joint jamb or “no-rot” frame saver, which is only “no rot” on the bottom six to nine inches of the jamb, Wincore® Entry Systems utilize full composite jambs – completely impervious to water, termites, will not rot or decay, and have two times the screw fastening strength of wood.

COMPOSITE BRICKMOULD

Unlike finger joint brickmould used by most manufacturers, the composite material is stainable, paintable, will not absorb moisture and doesn’t need “PVC” capping which will dent and trap moisture over time. Like our full composite jambs, the brickmould is impervious to water, termites, will not rot or decay, and has two times the screw fastening strength of wood.

ADVANCED SILL DESIGN

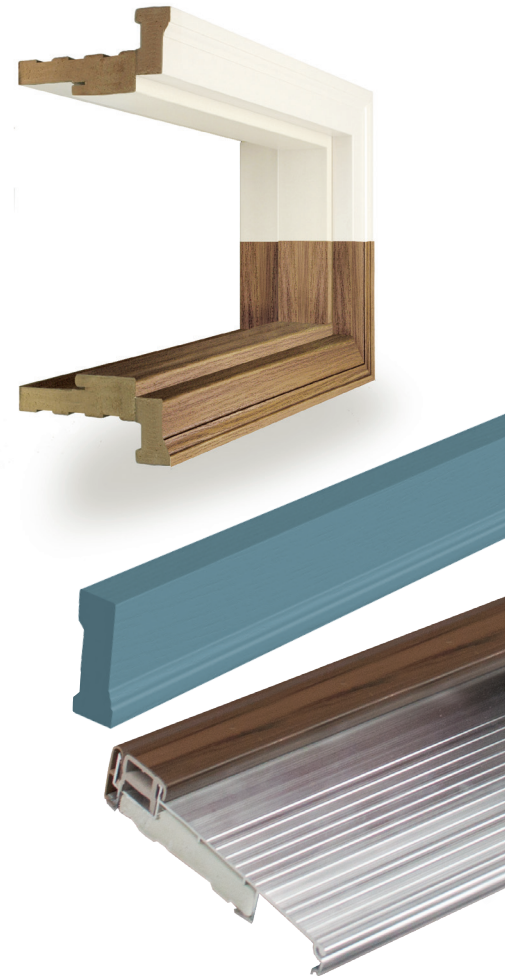
The sill’s innovative design prevents rotting, warping or deterioration over time. Incorporating a high dam overlap cap in addition to the 1-3/8” sill height creates a tough barrier against water penetration. Door Sills are available in mill finish, satin nickel and bronze.

SHIELD® TECHNOLOGY

An exclusive standard feature on Wincore® Fiberglass Entry Doors, every door is protected on all six sides. The fiberglass skin on the interior and exterior does not absorb moisture. While rails and stiles on other entry door systems are typically composed of wood and will rot over time, Wincore® Fiberglass Entry Systems use full composite stiles and rails to eliminate rotting, warping and delamination. Guaranteed by our comprehensive, lifetime limited warranty.

DOOR IN THE BOX

A Fiberglass Entry Door from Wincore® arrives as a complete door system. Everything you need to install the door (hardware, touch up paint, interior casing) comes in one box. The only thing you may need to add is shims.



SMOOTH

OAK GRAIN

MAHOGANY

Multiple Textures

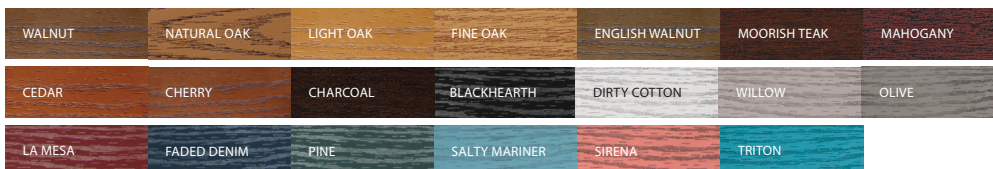
Wincore® Fiberglass Entry Systems are available in three textures, Smooth, Oak Grain and Mahogany. Not all are available on all door styles. Please reference the product or price catalogs for details. Textured doors can be stained or painted. Smooth doors can only be painted.

Stain Finish

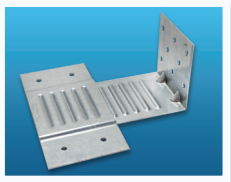
Offering customized, hand-rubbed stain choices. Our unique multi-step painting process ensures timely delivery and a longer lasting finish. Ten year warranty on all stain finishes. All sealed in with automotive grade clear coat. Touch up paint included with each door.

Paint Finish

Designer color choices from Sherwin Williams® are available and can be color coordinated on each door. Two-tone slabs and jambs, separate brickmould and interior casing colors all available on the same door. Sealed in with an automotive grade clear coat. Touch up paint is included with each door. Ten year warranty on all paint finishes.



PINE	AQUARIUM
CYPRESS	COLONIAL BLUE
CRANBERRY	WHITE
MESA RED	BEIGE
VALLI RED	ALMOND
AU CONTRAIRE	TAN
EGGPLANT	CLAY
MARINER	MILK CHOCOLATE
STILLWATER BLUE	MEDIUM BROWN
SMOKE	BROWN
ENZIAN BLUE	MOCHA
BLACK	HUNTER GREEN



ENERGY-EFFICIENT WEATHERSTRIPPING

C-shaped compression seals are cut on a reverse mitered 45-degree angle to create an overlapped seal that reduces the opportunity for air and water penetration without undue stress in the corner where jamb and head meet. It is interlocked into the frame for strength and durability over time.

SIMPLE SOLUTIONS CORNER PAD

The Simple Solutions Corner pad is used at the bottom of the jamb and "interlocks" with energy-efficient weatherstripping to seal out unwanted daylight and eliminate moisture penetration up the jamb by stopping the "wicking" process.

STEEL SECURE BACK PLATE

For added security to help reduce jamb split out, a steel back plate is put on the outside of the jamb. The 1" deadbolt passes through strike plate, jamb and steel back plate.

"DOUBLE BUBBLE" SWEEP

The Double Bubble Sweep system incorporates fan and bulb for maximum protection against wind and water penetration on the bottom of your door. When properly adjusted, the bulb seals around the interior and exterior edges of the threshold.

TRU-LOC CLIP SYSTEM

Clip system that attaches to the outside of the frame of patio doors and doors with sidelites to enable you to securely fasten the system to the wall.

CUT DOWN SIZING

Because we are in the replacement door business, select doors are available in custom heights. (See charts in price catalog for amounts.) We also offer expandable mullions up to 3", as well as brickmould up to 4" to customize widths.

VENTING & OPERATING SIDELITES

If you are looking for a special way to accent an entrance and create a source of ventilation, we offer a complete line of venting sidelites. When a single door is too small and a double door is too big, operating sidelites are a perfect fit. With both the door and the sidelite opening fully, it allows more room to bring larger items (furniture, appliances, etc.) into the home easily. This brings a completely new dimension to sidelites.

ELECTRONIC QUOTING

Web-based quoting system for you and your dealers.

QUICKSHIP

All standard doors in the Wincore® catalog carry an industry leading two-week lead time from your cut-off day.



WARRANTY

Comprehensive warranty coverage on all door hardware components including finishes and accessories.

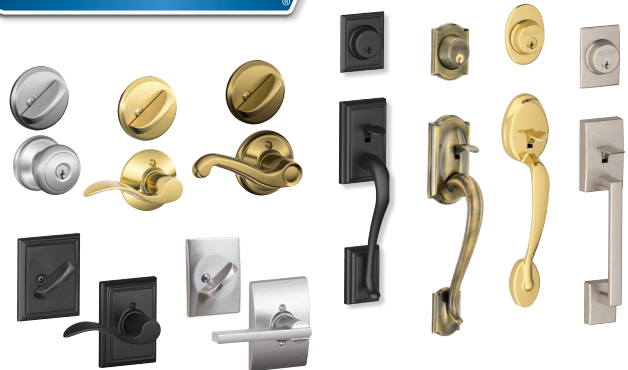
HINGES

Ball bearing hinges come standard on all inswing entry systems for smoother operation and longer life.



SCHLAGE® HARDWARE

High-Grade Schlage deadbolts (1" with center rolling pin) and handlesets provide you with a lifetime finish and mechanical warranty.



INTERNAL LVL

Each slab has a full door height 3" LVL on the handle side and a 1" LVL on the hinge side for added strength that reduces bowing and deflection.

ENERGY STAR®

Most Wincore® Entry Door Systems are ENERGY STAR® certified to ensure the best performance.



The way it should be.™