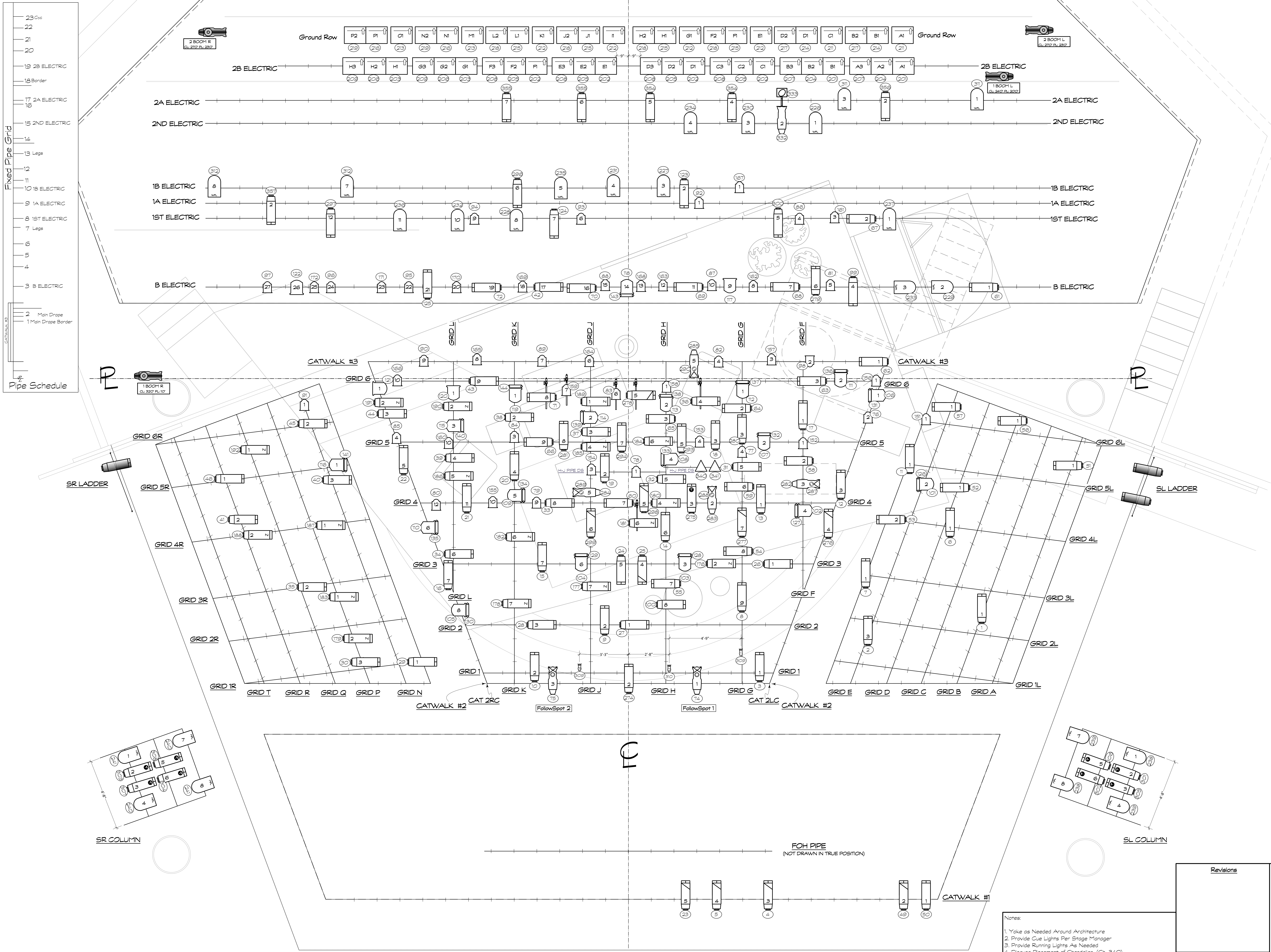


Fixed Pipe Grid

23	Cyc
22	
21	
20	
19	2B ELECTRIC
18	Border
17	2A ELECTRIC
16	
15	2ND ELECTRIC
14	
13	Legs
12	
11	
10	1B ELECTRIC
9	1A ELECTRIC
8	1ST ELECTRIC
7	Legs
6	
5	
4	
3	B ELECTRIC
2	Main Drop
1	Main Drop Border

Pipe Schedule



SYMBOLS

- ETC Source 4 18deg 975 watt
- ETC Source 4 36deg 975 watt
- ETC Source 4 50deg 975 watt
- Column 30deg 1kw
- Column 40deg 1kw
- Column 50deg Zoom 1kw
- Column 6 Fresnel 1kw
- Column 6 Fresnel 750 watt
- PAR 64 WFL 1kw
- PAR 64 MFL 1kw
- Column Mini-FO 750 watt
- MHS MFL Birds 150w

Striplights

- 3 Cell Fix Cyc 1kw each
- 2 Cell Cyc Strip 1kw each
- 1 Cell Cyc Strip 1kw each

Accessories

- Whisper Forerunner Barplotter
- Elipason Pro
- iris
- Globe Rotator

KEY

- REGULAR 20' Chan
- 20' Chan
- RIS
- TEMPLATE
- LANT
- CHANNEL

- Notes:
1. Yoke as Needed Around Architecture
 2. Provide Cue Lights Per Stage Manager
 3. Provide Running Lights As Needed
 4. Discuss Placement of Chandelier (Ch. 34C)
 5. Discuss Placement of Operating Table Special (Ch. 34I) inside Chandelier
 6. Channel 345a and 345b will share the same dimmer
 7. Locate Footlights with Lighting Designer

Revisions	

Light Plot

San Diego Repertory Theatre
Stage Theatre
The Clean House
Directed by: Sam Woodhouse
Set Designer: Victoria Petrovich
Lighting Designer: Christian M. DeAngeli
A.L.D. Stephen Salowski

Plot: 1 of 2
Lighting Supervisor: Andy Cameron
Scale: 1/2" = 10'
Date: 1.30.08
Drawn By: CRD:SS

Christian DeAngeli
69-14 Dimora Blvd.
East Elmhurst, NY 11370
(917) 225-6560