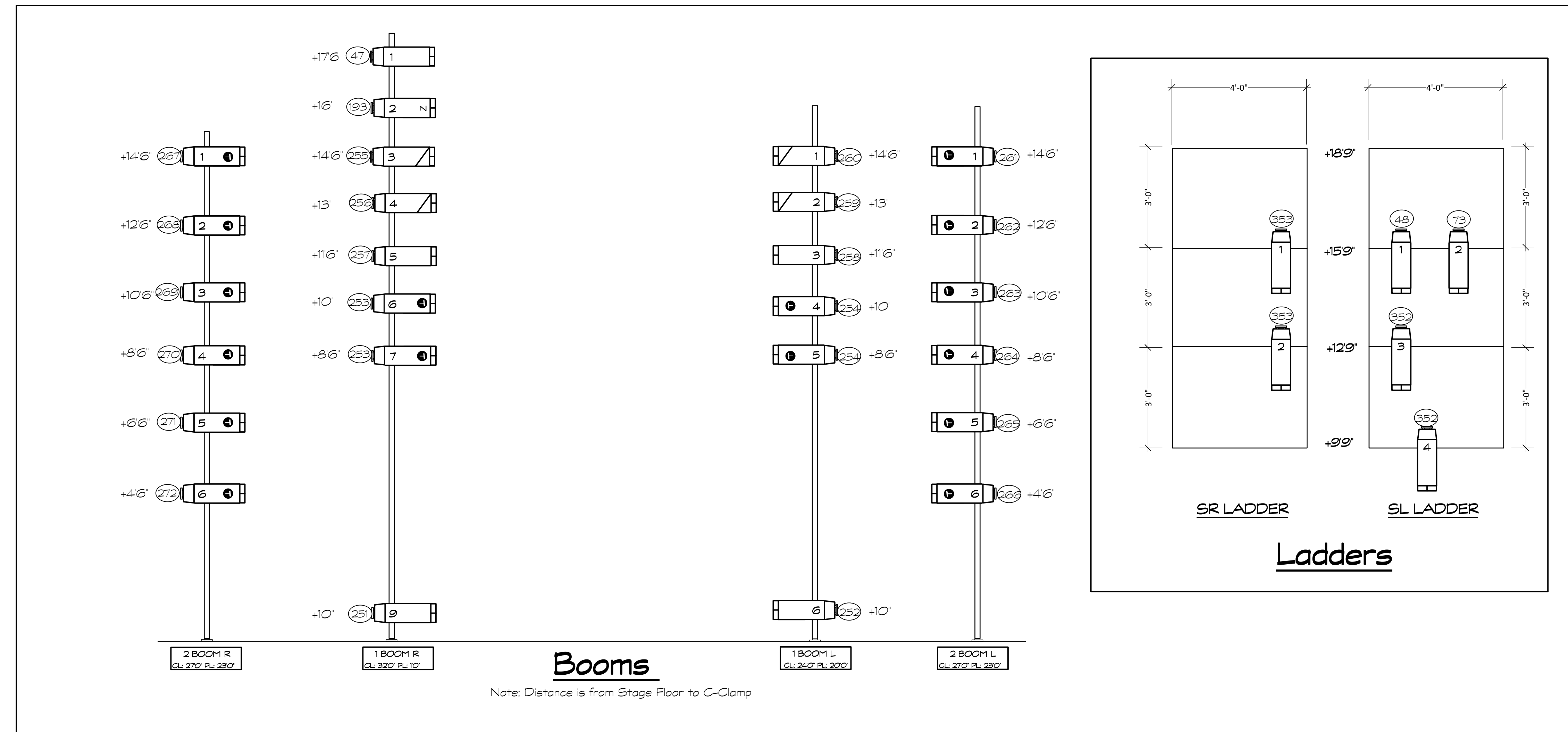
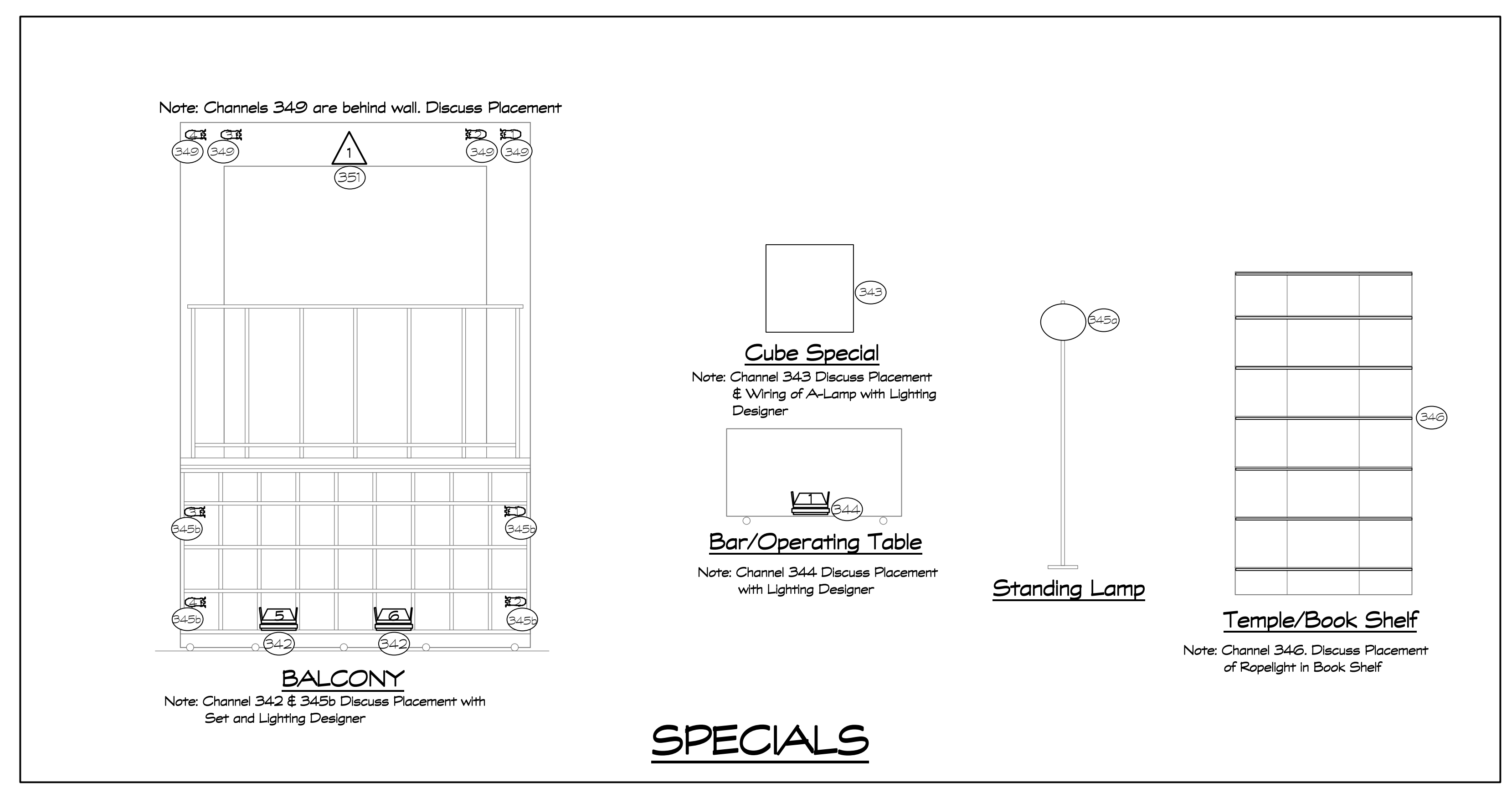


Section



Booms  
Note: Distance is from Stage Floor to C-Clamp



SPECIALS

SYMBOLS		Striplights		Accessories		KEY	
	ETC Source 4 18deg 375 watt		Colortran 30deg 1kw		Whisper Forerunner Escaper		SCROLLER BY DIMM
	ETC Source 4 36deg 375 watt		Colortran 40deg 1kw		Blipscon Pro		SOBO ROT
	ETC Source 4 50deg 575 watt		Colortran 50deg Zoom 800w		iris		PLATE
	PAR 64 WFL 1kw		Colortran 6' Fresnel 1kw		Gobo Rotator		CHANNEL
	PAR 64 MFL 1kw		Colortran 6' Fresnel 750 watt				
			Colortran Mini-10 750 watt				
			M16 MFL Bride 150w				

- Notes:
- Yoke as Needed Around Architecture
  - Provide Cue Lights Per Stage Manager
  - Provide Running Lights As Needed
  - Discuss Placement of Chandelier (Ch. 340) Inside Chandelier
  - Discuss Placement of Operating Table Special (Ch. 341)
  - Channel 345a and 345b will share the same dimmer
  - Locate Footlights with Lighting Designer

Revisions		San Diego Repertory Theatre Stage Theatre	
		<b>The Clean House</b>	
		Directed by: Sam Woodhouse	
		Set Designer: Victoria Perravich	
		Lighting Designer: Christian M. DeAngels A.L.D. Stephen Bakowski	
Plate	Lighting Supervisor: Andy Cameron	Scale: 1/2" = 10'	Date: 1.30.08
2 of 2			Drawn By: CMD:SS