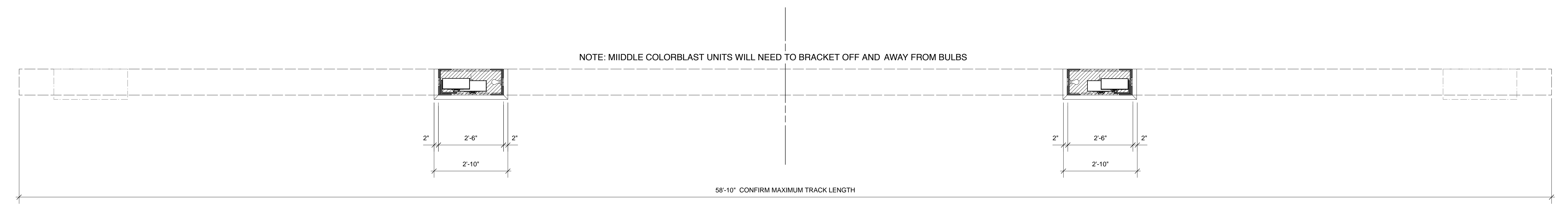
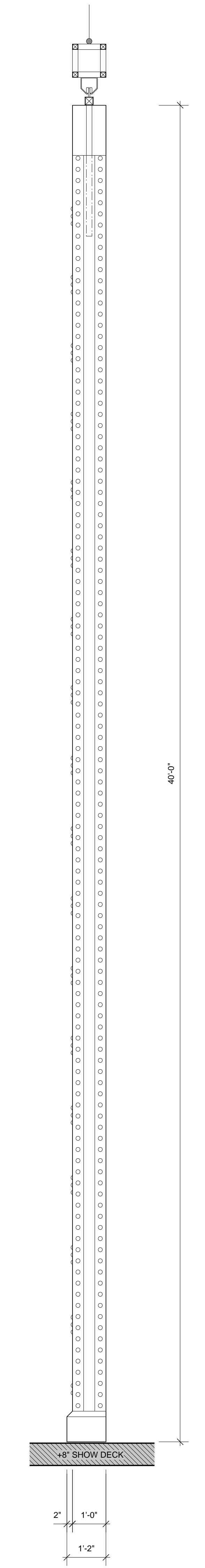


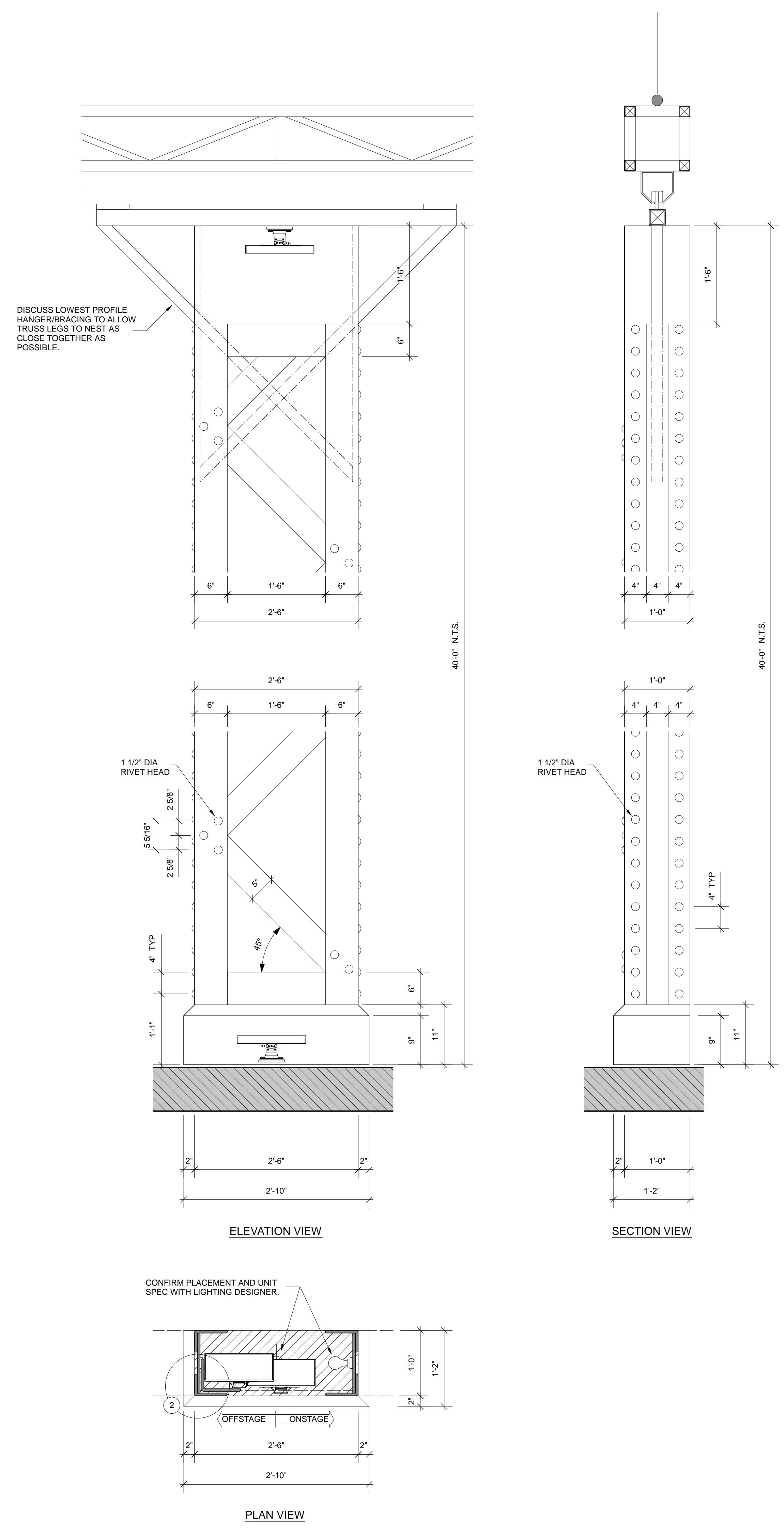
TRAVELING TRUSS - FRONT ELEVATION



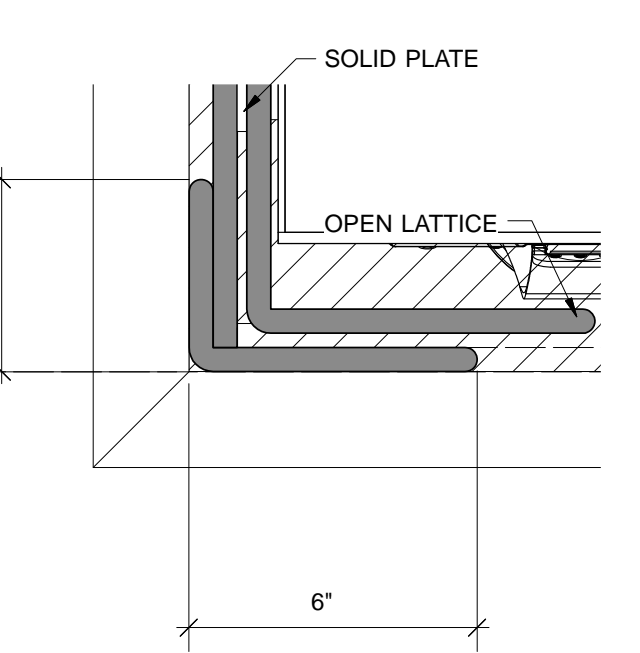
TRAVELING TRUSS - PLAN VIEW



TRAVELING TRUSS - CL SECTION



1 TRUSS DETAILS
SCALE: 1" = 1'-0"



2 CONSTRUCTION DETAIL
SCALE: 3" = 1'-0"

NOTES:
 CONSULT PAINT ELEVATIONS FOR COLOR SPECS.
 ALL IMPLIED STEELWORK TO BE TEXTURED TO RESEMBLE THE BUILD-UP OF MANY COATS OF PAINT OVER TIME.
 DISCUSS ALL PRACTICAL ELECTRIC SPECS WITH LIGHTING DESIGNER.
 DISCUSS BEST METHOD OF KEEPING UNITS RIGID WHILE IN TRAVEL.