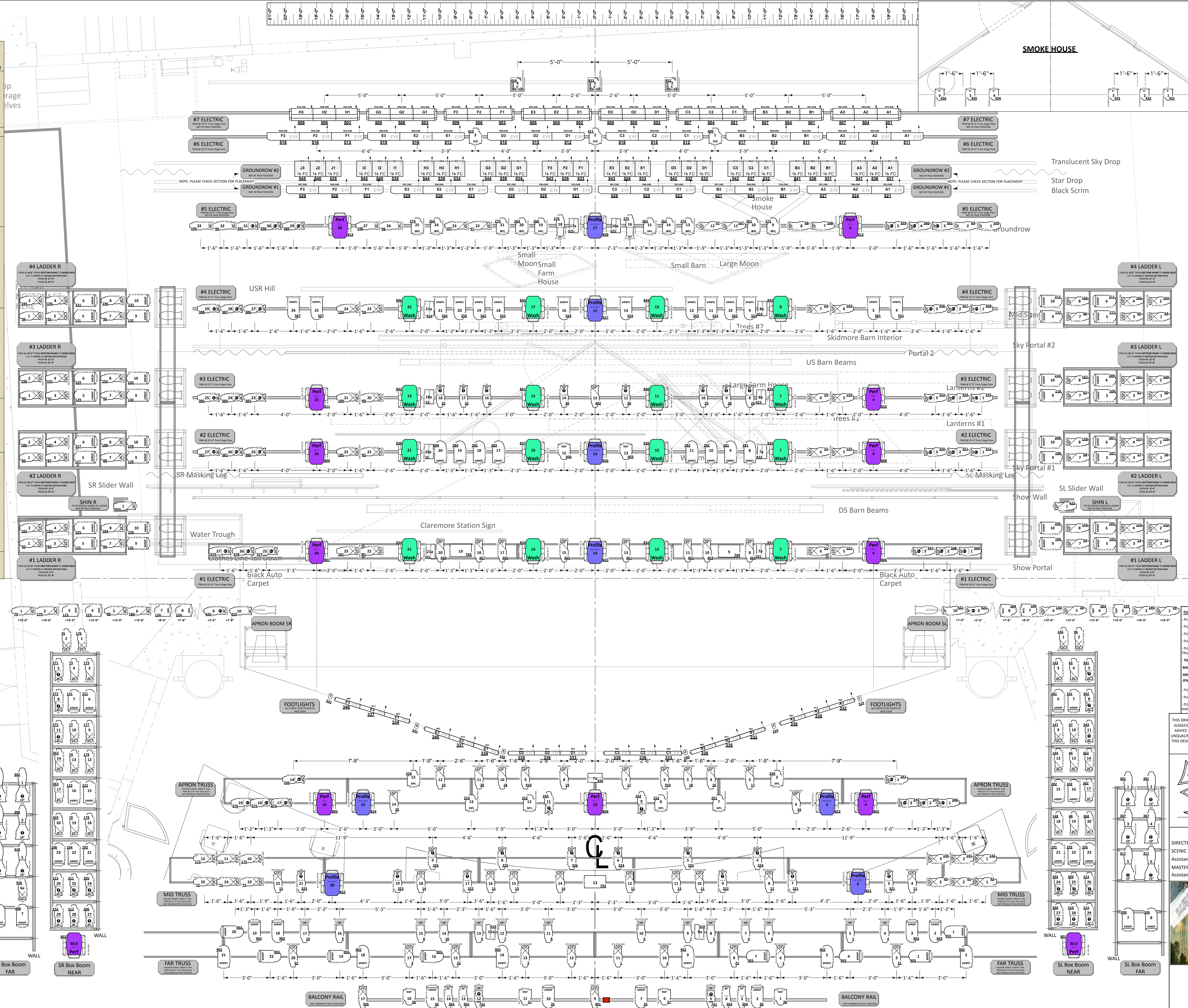


LINE SCHEDULE

Trim	Height
55 BOUNCE	
54	
53	
52	
51	
50 #7 ELECTRIC	29'9"
49 #6 ELECTRIC	29'9"
48	
47	
46 TRANSLUCENT SKY DROP	
45 BLUE LEGS	
44 STAR DROP	
43 BLACK SCRIM	
42	
41	
39 #5 ELECTRIC	26'0"
38	
37	
36 SMALL MOON	
35 LARGE MOON	
34	
33	
32	
31	
30 #4 ELECTRIC	25'6"
29	
28 TREES #2	
27 SKIDMORE BARN INT.	
26 SKY PORTAL #2	
25 PORTAL #2	
24 US BARN BEAMS	
23 LANTERNS #2	
22	
21	
20 #3 ELECTRIC	27'3"
19	
18 TREES #1	
17 LANTERNS #1	
16 MINI SKY	
15	
14 #2 ELECTRIC	25'6"
13	
12 SKY PORTAL #1	
11 MASKING LEGS	
10 SLIDER WALLS	
09 IRIS BORDER	
08 DS BARN BEAMS	
07	
06 CLAREMORE STATION SIGN	
04	
03 #1 ELECTRIC	24'10"
02	
01 SHOW PORTAL	
00	



Instruments

- 10deg Source4 @ 750w
- 14deg Source4 @ 750w
- 19deg Source4 @ 750w
- 26deg Source4 @ 750w
- 36deg Source4 @ 750w
- 50deg Source4 @ 750w
- 70deg Source4 @ 750w
- PAR 64 WFL @ 1kw
- PAR 64 MFL @ 1kw
- PAR 64 NSP @ 1kw
- S4 PAR NSP @ 750w
- S4 PAR MFL @ 750w
- S4 PAR WFL @ 750w
- 6" FRESNEL @ 750w
- 6" FRESNEL-NO LENSE @ 750w
- Mac2k Performance
- Mac2k Wash
- Mac2k Profile
- 6' 30ft 3-cir EYC Flood Strip @ 750w
- 6' 30ft 3-cir EYC SPOT Strip @ 750w
- Altman Ground Cyc @ 750w
- 5' NanoStrip 3-Cir FTF @ 350w
- Altman FC1 3-Ckt 3-Lt @ 1kw
- Strobe
- Mini-Ten @ 250w
- MR16 Birdie Short Nose

NOTES:
 ALL UNITS ON 18" CENTERS UNLESS OTHERWISE NOTED
 PLEASE NOTE ALL TRIMS ARE TAKEN FROM THE STAGE FLOOR
 PLEASE NOTE FOCUS ORIENTATION FOR ALL STRIP/CYC UNITS
 PLEASE NOTE ALL TEMPLATES "A SIZE"
 PLEASE ADD TOP MATS ON ALL BOX ROOM, APRON ROOM AND APRON FLOOR UNITS
 TOP MATS ON OTHER UNITS TBD BY DESIGNER AT FOCUS
 BARNDOORS ON LADDER PAR 64 WARM UNITS
 GROUND ROW #1 & #2 TO BE PLACED US OF TRANSLUCENT SKY DROP
 JEM FOGGERS TO BE PLACED SL & SR OF BOUNCE
 PLEASE NOTE NOH POSITIONS ARE NOT DRAWN IN TRUE POSITION
 PLEASE HAVE #332, #315, #314, #304, #307 and BACKROW ON HAND FOR FOCUS

LIGHTING DESIGNER:
 TOM STUNGE
 27101 SE 74th Street
 Issaquah, WA 98027
 Phone: 212-245-2945
 www.LTSlighting.com

PRODUCTION TEAM
 DIRECTED BY: PETER ROTHSTEIN
 SCENIC DESIGN BY: MATTHEW SMUCKER
 ASSISTANT LIGHTING DESIGNER: Christian DeAngelis
 MASTER ELECTRICIAN: Sean Callahan
 ASSISTANT ELECTRICIAN: Bill Reaick



PRESENTED BY
THE 5TH AVENUE THEATRE
 Seattle, WA

SCALE: 1/2" = 1'-0"
 12.12.11 REV01 CMD
 12.23.11 REV02 CMD
 1.24.12 REV03 CMD
 1.24.12 REV04 CMD

1
 LIGHT PLOT

PRACTICALS

441 Small Moon	444 DS Beam Lntrns	445 Lanterns
442 Large Moon	446 US Beam Lntrns	445 Lanterns
443 Large Moon	448 Tiny Town Lights	455

STAR DROP

530 Star Drop	533 Star Drop
531 Star Drop	534 Star Drop
532 Star Drop	535 Star Drop

ATMOSPHERICS

HAZAR	JEM FOG	JEM FOG	TRAP
251 Hazer	252 Jem Fogger USL	253 Jem Fogger USR	252 Fog Heater

FOLLOWSPOT BOOTH

1	2	3
---	---	---