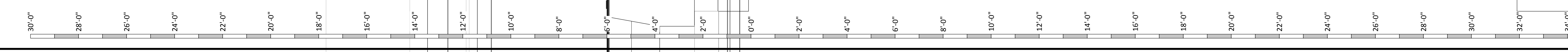
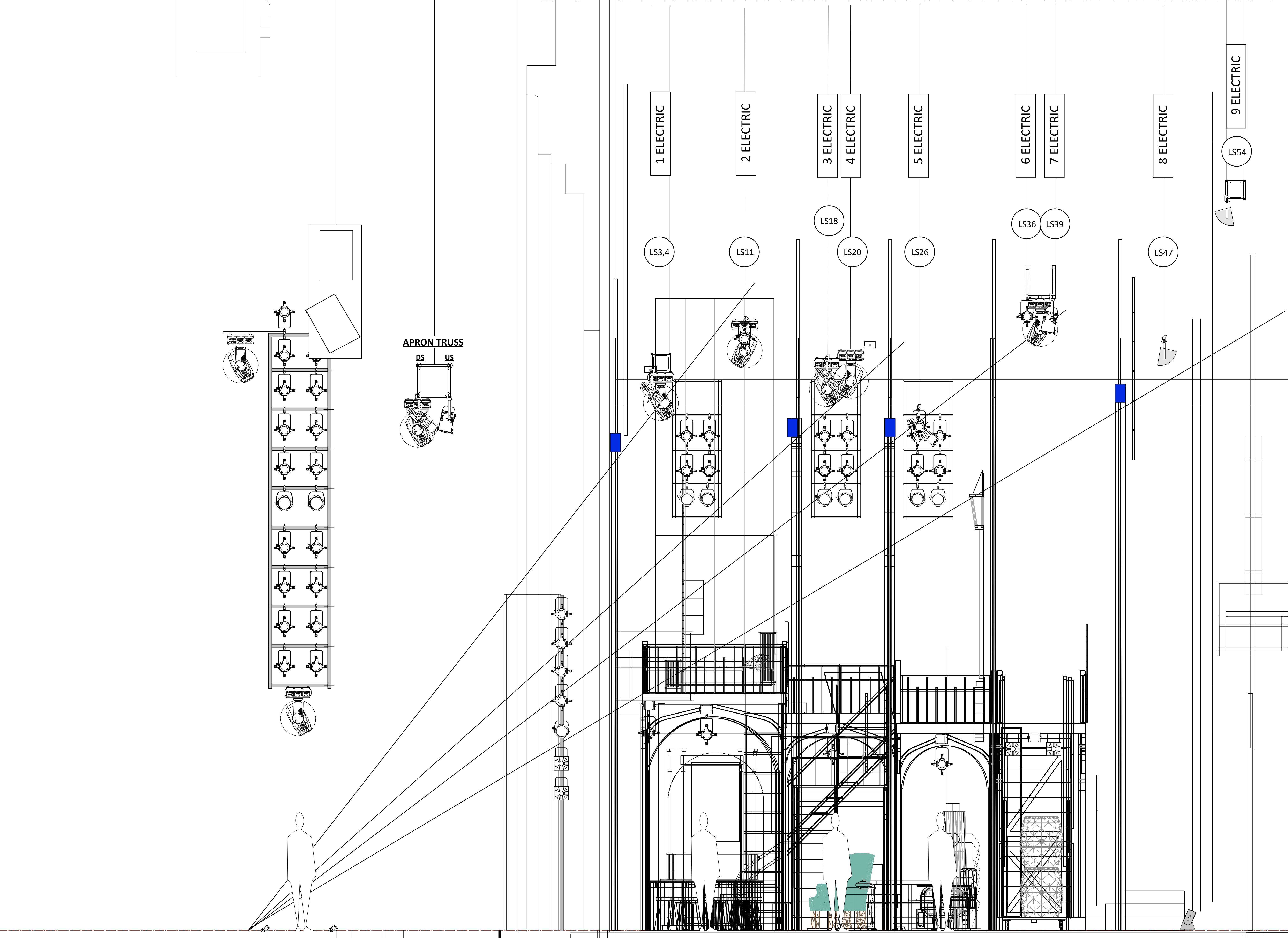


YELLOW SHADE INDICATES ELECTRIC POSITION
 GREEN SHADE INDICATES ELECTRIFIED SCENERY
 GRAYED OUT SHADE INDICATES UNUSABLE LINESSET
 DISTANCES FROM UPSTAGE EDGE OF SMOKE POCKET
 - ELECTRIC TRIMS TO STAGE FLOOR
 - SCENERY TRIMS TO STAGE DECK

TRUSS HEIGHT	#	DESCRIPTION	TRUSS HEIGHT	#	DESCRIPTION
0'-0"	1	BLACKOUT DROP	0'-0"	17	BLACKOUT DROP
1'-0"	2	1ST ELECTRIC (CABLE POCK)	1'-0"	18	3RD ELECTRIC
2'-0"	3	2ND ELECTRIC	2'-0"	19	4TH ELECTRIC
3'-0"	4	ROOFTOP HANGER	3'-0"	20	FOCUS TRACK
4'-0"	5	FOCUS TRACK	4'-0"	21	PIPE CHANGEBLER
5'-0"	6	PICTURE SHEET	5'-0"	22	#3 PORTAL
6'-0"	7	2ND ELECTRIC	6'-0"	23	5TH ELECTRIC
7'-0"	8	FOCUS TRACK	7'-0"	24	BROWNLOWS HANGER
8'-0"	9	BROWNLOWS CHANGEBLER	8'-0"	25	GOD IS LOVE SIGN
9'-0"	10	UNDERTRUSS SIGN	9'-0"	26	KICK US
10'-0"	11	#2 PORTAL	10'-0"	27	COFFIN HANGERS
11'-0"	12	3RD ELECTRIC	11'-0"	28	#4 PORTAL (Possible Ball of Linesset)
12'-0"	13	4TH ELECTRIC	12'-0"	29	LONDON BRIDGE HANGERS
13'-0"	14	FOCUS TRACK	13'-0"	30	6/7 ELECTRIC (TRUSS)
14'-0"	15	PIPE CHANGEBLER	14'-0"	31	KICK US/BREE CROSSOVER
15'-0"	16	#3 PORTAL	15'-0"	32	COFFIN HANGERS
16'-0"	17	5TH ELECTRIC	16'-0"	33	#4 PORTAL (Possible Truss Hanger)
17'-0"	18	BROWNLOWS HANGER	17'-0"	34	LONDON BRIDGE HANGERS
18'-0"	19	GOD IS LOVE SIGN	18'-0"	35	6/7 ELECTRIC (TRUSS)
19'-0"	20	KICK US	19'-0"	36	KICK US/BREE CROSSOVER
20'-0"	21	COFFIN HANGERS	20'-0"	37	COFFIN HANGERS
21'-0"	22	#4 PORTAL (Possible Ball of Linesset)	21'-0"	38	#4 PORTAL (Possible Truss Hanger)
22'-0"	23	LONDON BRIDGE HANGERS	22'-0"	39	LONDON BRIDGE HANGERS
23'-0"	24	6/7 ELECTRIC (TRUSS)	23'-0"	40	6/7 ELECTRIC (TRUSS)
24'-0"	25	KICK US/BREE CROSSOVER	24'-0"	41	KICK US/BREE CROSSOVER
25'-0"	26	COFFIN HANGERS	25'-0"	42	COFFIN HANGERS
26'-0"	27	#4 PORTAL (Possible Truss Hanger)	26'-0"	43	#4 PORTAL (Possible Truss Hanger)
27'-0"	28	LONDON BRIDGE HANGERS	27'-0"	44	LONDON BRIDGE HANGERS
28'-0"	29	6/7 ELECTRIC (TRUSS)	28'-0"	45	6/7 ELECTRIC (TRUSS)
29'-0"	30	KICK US/BREE CROSSOVER	29'-0"	46	KICK US/BREE CROSSOVER
30'-0"	31	COFFIN HANGERS	30'-0"	47	COFFIN HANGERS
31'-0"	32	#4 PORTAL (Possible Truss Hanger)	31'-0"	48	#4 PORTAL (Possible Truss Hanger)
32'-0"	33	LONDON BRIDGE HANGERS	32'-0"	49	LONDON BRIDGE HANGERS
33'-0"	34	6/7 ELECTRIC (TRUSS)	33'-0"	50	6/7 ELECTRIC (TRUSS)
34'-0"	35	KICK US/BREE CROSSOVER	34'-0"	51	KICK US/BREE CROSSOVER
			35'-0"	52	COFFIN HANGERS
			36'-0"	53	#4 PORTAL (Possible Truss Hanger)
			37'-0"	54	LONDON BRIDGE HANGERS
			38'-0"	55	6/7 ELECTRIC (TRUSS)
			39'-0"	56	KICK US/BREE CROSSOVER



NOTES:
 - ALL UNITS ON 18" CENTERS UNLESS OTHERWISE NOTED
 - PLEASE NOTE ALL TRIMS ARE TAKEN FROM THE STAGE FLOOR
 - PLEASE NOTE FOCUS ORIENTATION FOR ALL STRAY/CV UNITS
 - PLEASE NOTE ALL TEMPLATES "A SIZE"
 - PLEASE ADD TOP HATS ON ALL BOX ROOM, APRON ROOM and APRON TRUSS PAR UNITS
 - TOP HATS ON OTHER UNITS TO BE DETERMINED AT FOCUS
 - PLEASE NOTE KDM POSITIONS ARE NOT DRAWN IN TRUE POSITION
 - PLEASE STIFFEN ALL OVER STAGE POSITIONS
 - PLEASE HAVE R132, R133, R134, R104, R07 and BLACKWRAP ON HAND FOR FOCUS

THIS DRAWING REPRESENTS VISUAL CONCEPTS AND CONSTRUCTION SUGGESTIONS ONLY. IT DOES NOT REPLACE THE KNOWLEDGE AND ADVICE OF A LICENSED STRUCTURAL ENGINEER. THE DESIGNER IS UNQUALIFIED TO DETERMINE THE STRUCTURAL APPROPRIATENESS OF THIS DESIGN AND WILL NOT ASSUME RESPONSIBILITY FOR IMPROPER ENGINEERING OR USE.

SCENIC & LIGHTING:
 TOM STURGE
 27101 SE 74TH STREET
 ISSAQUAH, WA 98027
 Phone: 212-245-2945
 www.LTSlighting.com

PRODUCTION TEAM
 DIRECTED BY: David Armstrong
 SCENIC & LIGHTING DESIGN BY: Tom Sturge
 ASSISTANT LIGHTING DESIGNER: Christian DeAngelis
 MASTER ELECTRICIAN: Sean Callahan
 ASSISTANT ELECTRICIAN: Stephen Graham



PRESENTED BY
THE 5TH AVENUE THEATRE
 Seattle, WA

SCALE: 1/2" = 1'-0"
 UNLESS OTHERWISE NOTED
 10.11.18 PRIM REV 4 TS & CMD
 10.21.18 PRIM REV 12 TS & CMD
 10.24.18 REV 1 TS & CMD
 11.17.18 REV 3 TS & CMD