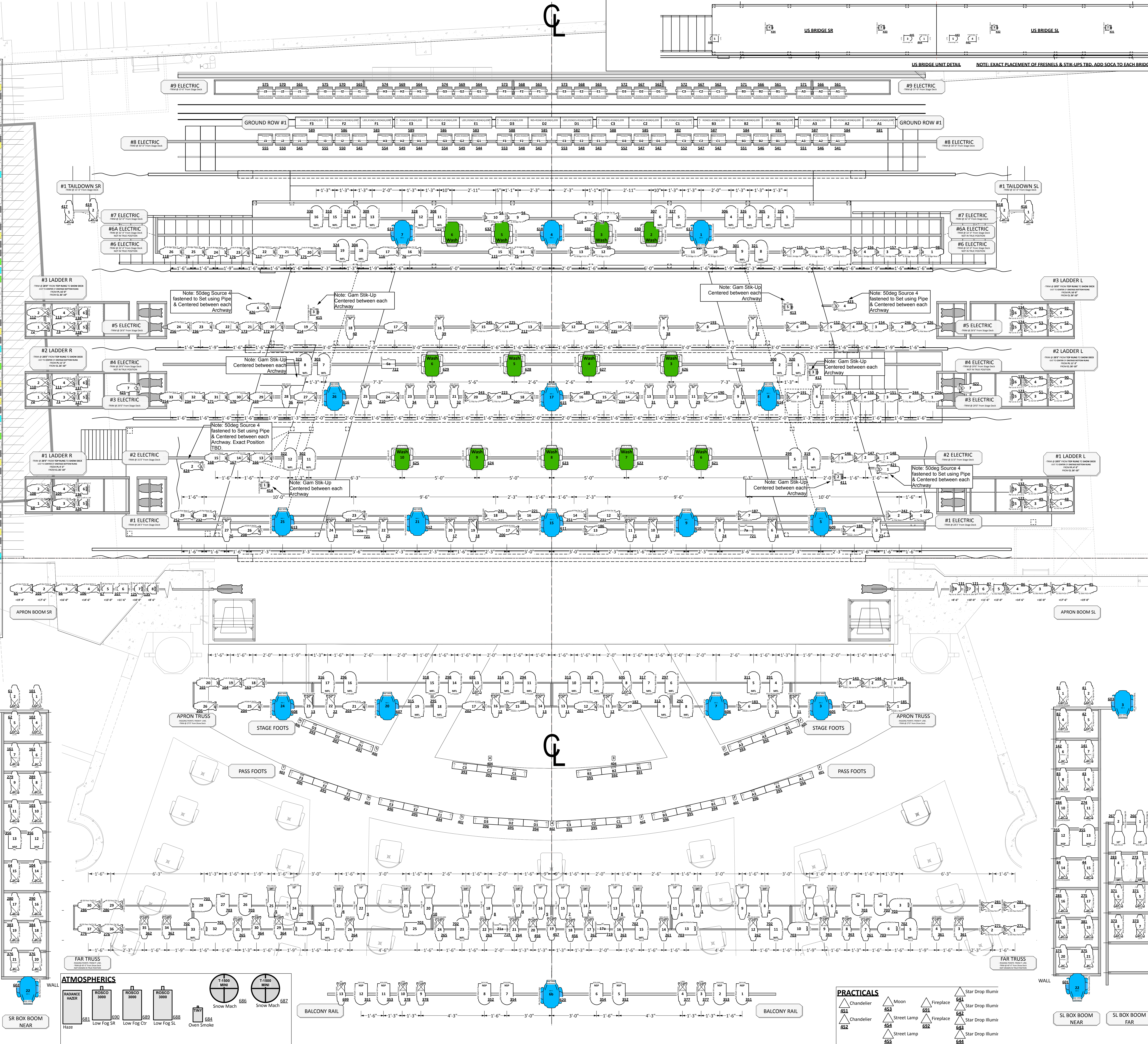
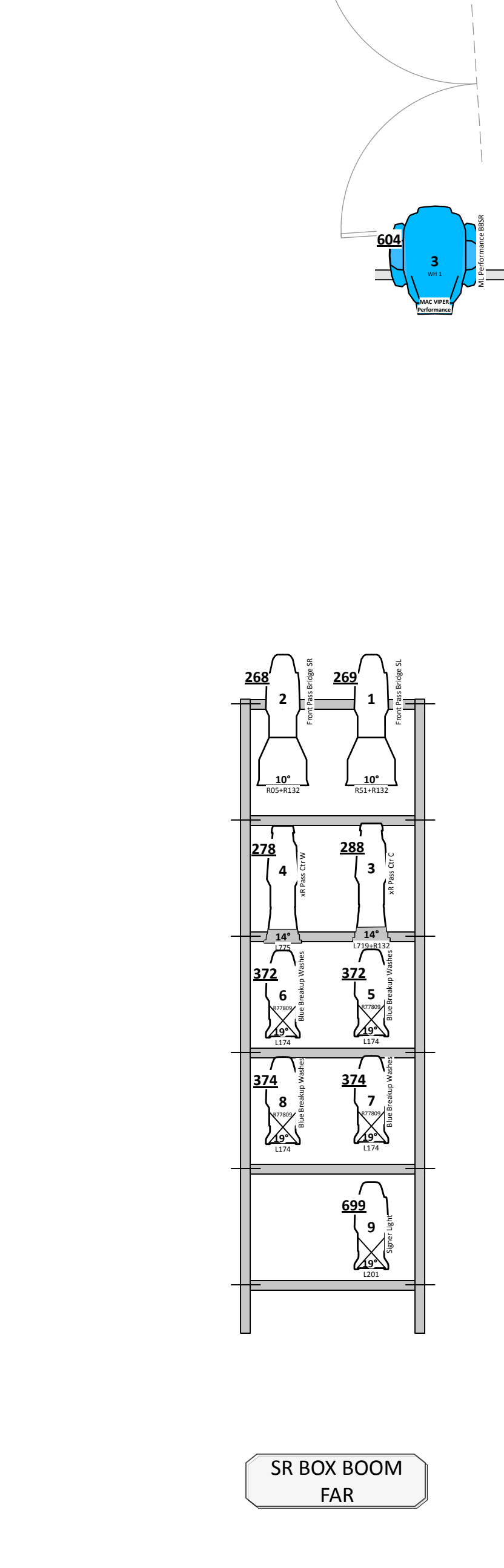


LINESET SCHEDULE

32'-1"	55	
31'-6"	54	9TH ELECTRIC/MOON/STAR DROP
30'-11"	53	
30'-4"	52	ST. PAULS DROP
29'-9"	51	REGENTS STREET DROP
29'-4"	50	NORTHAMPTON DROP KICK US 2
28'-7"	49	
28'-0"	48	
27'-8"	47	8TH ELECTRIC (CYCS) KICK US 3
26'-8"	46	BLACK SCRIM KICK DS 2
26'-3"	45	BRICK/WINDOW DROP
25'-8"	44	#5 PORTAL W/BORDER & LEGS
25'-1"	43	
24'-6"	42	COFFIN HANGERS
23'-11"	41	
23'-4"	40	
22'-8"	39	CABLE CROSSOVER KICK DS 1
22'-2"	38	
21'-7"	37	6/7 ELECTRIC (TRUSS)
21'-0"	36	
20'-5"	35	
19'-10"	34	LONDON BRIDGE HANGER SR
19'-3"	33	#4 PORTAL (Possible Truss Hng)
18'-8"	32	LONDON BRIDGE HANGER SL (possible split - of linesets)
17'-10"	31	GOD IS LOVE SIGN KICK DS 3
17'-6"	30	
16'-11"	29	BROWNLOWS HANGER
16'-4"	28	
15'-9"	27	
15'-2"	26	5TH ELECTRIC
14'-7"	25	
14'-0"	24	#3 PORTAL
13'-5"	23	
12'-10"	22	PUB CHANDELIER
12'-3"	21	FOCUS TRACK
11'-8"	20	4TH ELECTRIC
11'-1"	19	
10'-6"	18	3RD ELECTRIC
9'-11"	17	
9'-4"	16	#2 PORTAL
8'-9"	15	UNDERTAKER SIGN
8'-2"	14	BROWNLOWS CHANDELIER
7'-7"	13	FOCUS TRACK
7'-0"	12	
6'-5"	11	2ND ELECTRIC
5'-10"	10	
5'-3"	9	PICTURE SHEET
4'-8"	8	
4'-1"	7	FOCUS TRACK
3'-6"	6	ROOFTOP HANGER
2'-11"	5	
2'-4"	4	
1'-9"	3	1ST ELECTRIC (CABLE PICK)
1'-2"	2	
0'-7"	1	BLACKOUT DROP
0'-1 1/2"	0	#1 PORTAL

LINESET SCHEDULE

TRIMS FROM SMOKE POCKET	#	DESCRIPTION	TRIM HEIGHT
-		YELLOW SHADE INDICATES ELECTRIC POSITION	
-		GREEN SHADE INDICATES ELECTRIFIED SCENERY	
-		PINK SHADE INDICATES PORTAL	
-		GRAYED OUT SHADE INDICATES UNSABLE UNLINESSET	
-		DISTANCES FROM UPSTAGE EDGE OF SMOKE POCKET	
-		ELECTRIC TRIMS TO STAGE FLOOR	
-		SCENERY TRIMS TO SHOW DECK	



Instruments

- 10deg Source4 @ 750w
- 14deg Source4 @ 750w
- 19deg Source4 @ 750w
- 26deg Source4 @ 750w
- 36deg Source4 @ 750w
- 50deg Source4 @ 750w
- PAR 64 MFL @ 1kw
- PAR 64 WFL @ 1kw
- PAR 64 NSP @ 1kw
- S4 PAR NSP @ 750w
- 6' 30H 3-cir EYF SPOT Strip @ 750w
- Altman FC1 3-Cat 3-Lt @ 1kw
- Gam Stik-up @ 150w
- Mini-Ten
- MAC Viper Performance
- MAC 2K Wash

NOTES:
 - ALL UNITS ON 18" CENTERS UNLESS OTHERWISE NOTED
 - PLEASE NOTE ALL TRIMS ARE TAKEN FROM THE STAGE FLOOR
 - PLEASE NOTE FOCUS ORIENTATION FOR ALL STRIP/CYC UNITS
 - PLEASE NOTE ALL TEMPLATES "A SIZE"
 - PLEASE ADD TOP HATS ON ALL BOX BOOM, APRON BOOM AND APRON TRUSS PAR UNITS
 - TOP HATS ON OTHER UNITS TBD BY DESIGNER AT FOCUS
 - PLEASE NOTE FOCUS POSITIONS ARE NOT DRAWN IN TRUE POSITION
 - PLEASE STYPEN ALL OVER STAGE POSITIONS
 - PLEASE MARK REEL, REEL, REEL, REEL, REEL AND BLACKTRAP ON HAND FOR FOCUS
 - GAM STIK-UPS AND SODOS SOURCE 4 ON P&P CENTER IN BETWEEN ARCHWAY
 - SNOW MACHINES LOCATIONS ON 7TH ELECTRIC ON ENDS OF PIPE

THIS DRAWING REPRESENTS VISUAL CONCEPTS AND CONSTRUCTION SUGGESTIONS ONLY. IT DOES NOT REPLACE THE KNOWLEDGE AND ADVICE OF A LICENSED STRUCTURAL ENGINEER. THE DESIGNER IS UNQUALIFIED TO DETERMINE THE STRUCTURAL APPROPRIATENESS OF THIS DESIGN AND WILL NOT ASSUME RESPONSIBILITY FOR IMPROPER ENGINEERING OR USE.

SCENIC & LIGHTING:
 TOM STURGE
 27101 SE 74th Street
 Issaquah, WA 98027
 Phone: 212-245-2945
 www.LTSLighting.com

PRODUCTION TEAM
 DIRECTED BY David Armstrong
 SCENIC & LIGHTING DESIGN Tom Sturge
 ASSISTANT LIGHTING DESIGNER Christian DeAngelis
 MASTER ELECTRICIAN Sean Callahan
 ASSISTANT ELECTRICIAN Stephen Graham



PRESENTED BY
5TH AVENUE THEATRE
 Seattle, WA

SCALE: 1/2" = 1'-0"
 (unless otherwise noted)

10.11.13 PRIM REV 1	TS & CMD
10.14.13 PRIM REV 2	TS & CMD
10.17.13 PRIM REV 3	TS & CMD
10.21.13 REV 1	TS & CMD
10.23.13 REV 2	TS & CMD
11.17.13 REV 3	TS & CMD