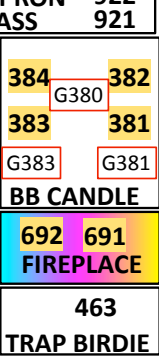
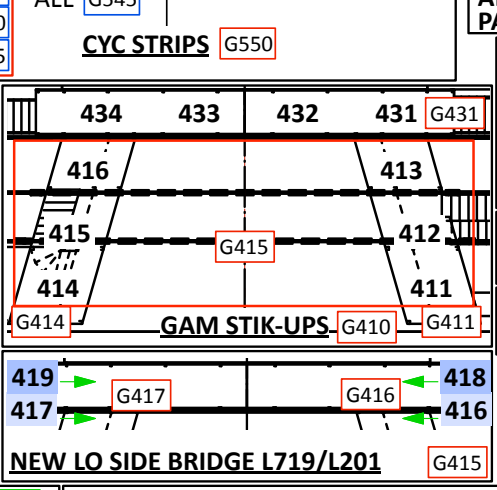
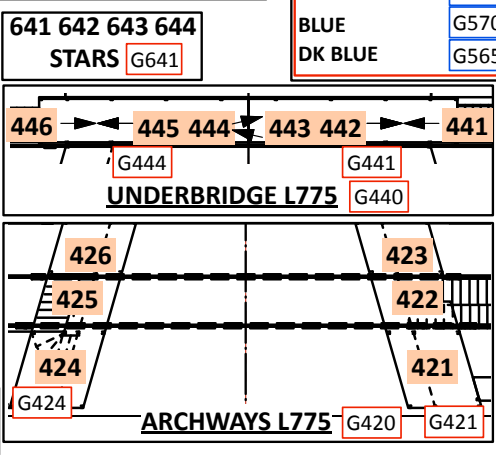
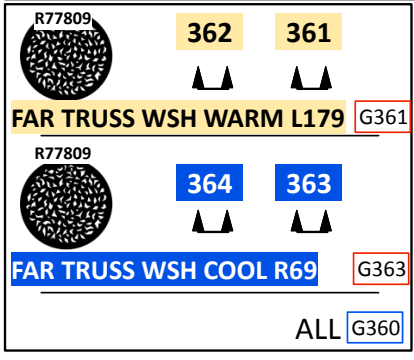
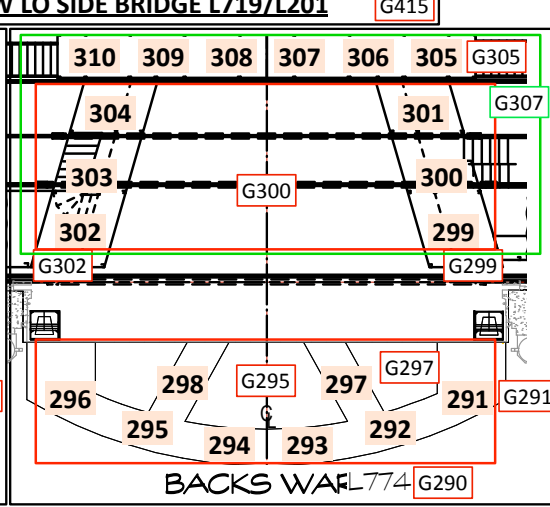
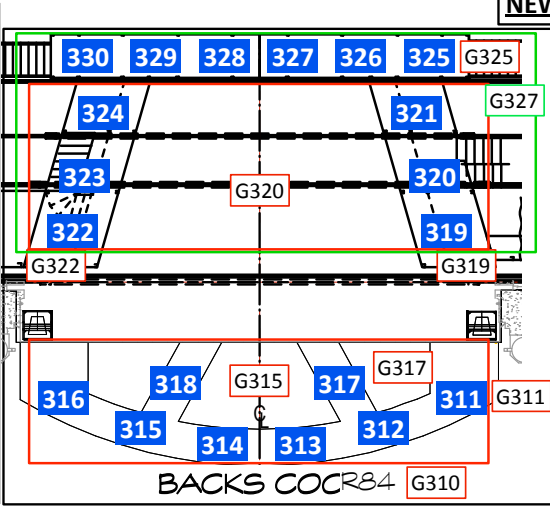
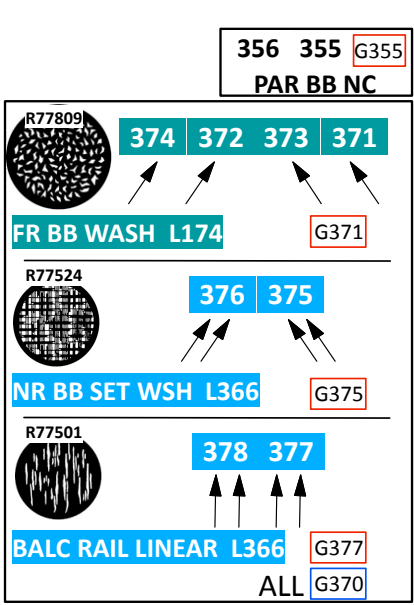


- ALL CONV** 699
- LADDER R 919
 - LADDER L 918
 - GRND RW 917
 - #9 ELEC 916
 - #8 ELEC 915
 - #7 ELEC 914
 - #6 ELEC 913
 - #5 ELEC 912
 - #4 ELEC 911
 - #3 ELEC 910
 - #2 ELEC 909
 - #1 ELEC 908
 - SR BB NR 907
 - SL BB NR 906
 - FAR BB 905
 - APRON BM 904
 - APRON TR 903
 - FAR TRUSS 901
 - BALC RAIL 900
 - BRIDGE 926
 - IN 3 925
 - IN 2 924
 - IN 1 923
 - APRON 922
 - PASS 921

- OLIVER**
MAGIC SHEET v.7
LD: TOM STURGE
- Followspot Color**
- Frame 1 L205
 - Frame 2 L744
 - Frame 3 L153
 - Frame 4 R52
 - Frame 5 L201
 - Frame 6 R132
- ATMOSPHERICS**
- HAZER FAN 680
 - HAZER 681
 - FOG HEAT 682
 - FOG CONTROL 683
 - OVEN SMOKE 684
 - SNOW 686-687
 - LO FOG 688-690
 - CONDUCTOR 695
 - HOUSELIGHTS 701
 - DOWN PARS 702
 - ARCHITECTURE 703
 - WORKLIGHT 720



- SPECIALS** G450
- MOON** Oliver
453, 457, 456
- LAMPS** G454
- 455, 454
 - CHANDELIERS** G451
 - 451 Cripple
 - 452 Brownlow
 - LAMPS**
 - 462 Fagin's Den



- R59 354, 353 G353
- DEV146 352, 351 G351
- RAIL COLOR WASH** G350
- R58 R378 R03 393, 392, 391 G391
- STAGE FOOTLIGHTS** G399, G398, G397
- 396, 395, 394 G394
- PASS FOOTLIGHTS FOOTLIGHTS** G390
- 406, 404, 405 G404
 - STAGE FEET**
 - 403, 402, 401 G401
 - PASS FEET FOOT BIRDIES** G400

