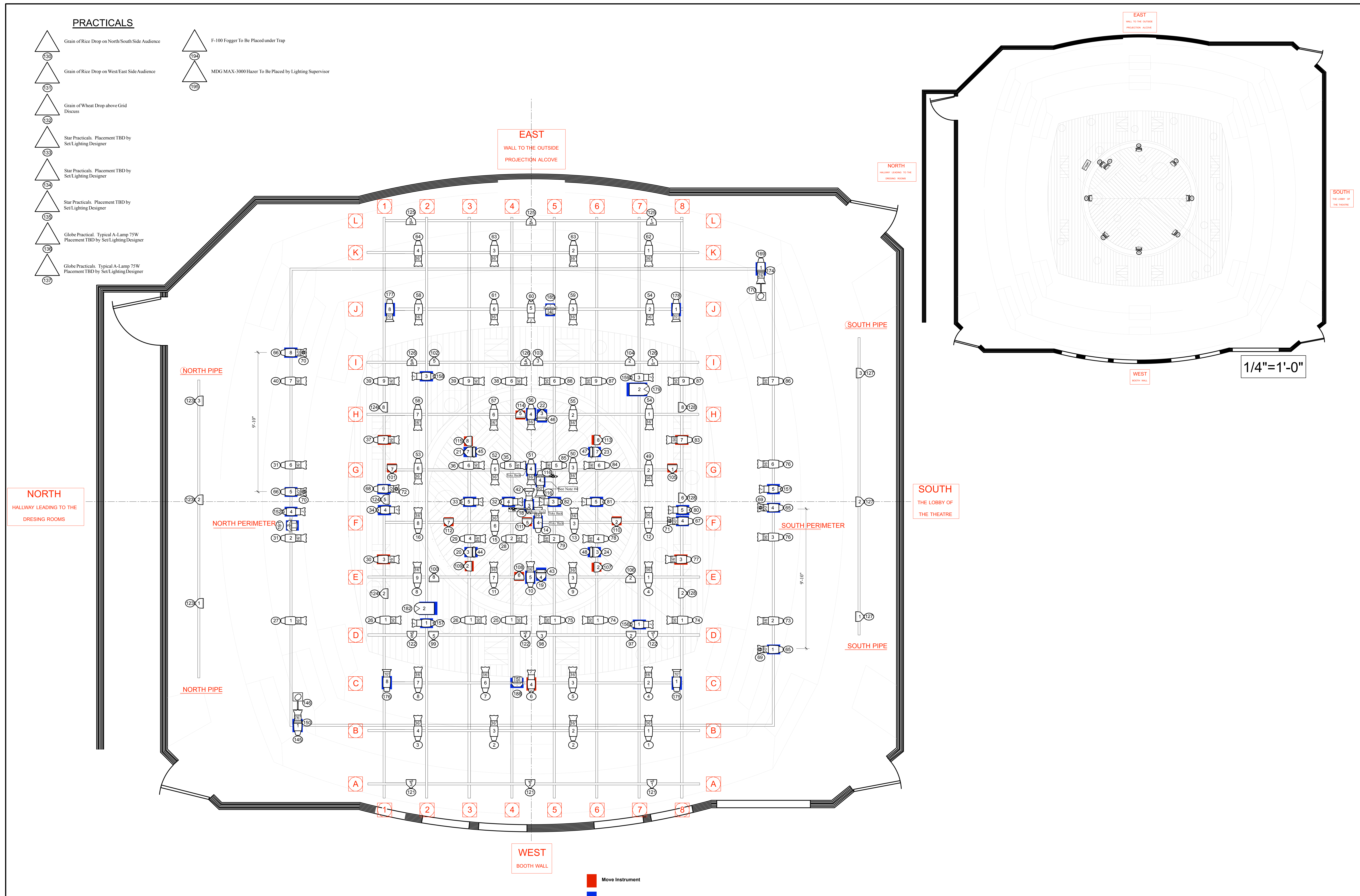


**PRACTICALS**

- Grain of Rice Drop on North/South Side Audience
- Grain of Rice Drop on West/East Side Audience
- Grain of Wheat Drop above Grid Discus
- Star Practical, Placement TBD by Set Lighting Designer
- Star Practical, Placement TBD by Set Lighting Designer
- Star Practical, Placement TBD by Set Lighting Designer
- Globe Practical, Typical A-Lamp 75W Placement TBD by Set Lighting Designer
- Globe Practical, Typical A-Lamp 75W Placement TBD by Set Lighting Designer
- F-100 Fogger To Be Placed under Trap
- MDG MAX-3000 Hazer To Be Placed by Lighting Supervisor



- NOTES**
- SEE PAPERWORK FOR FOCUS, COLOR, TEMPLATE #, BARNDOORS, AND TOP HATS
  - ALIGN UNITS IN GRID AROUND BUILDING STRUCTURE AS NEEDED.
  - PLEASE PROVIDE EXTRA BARNDOORS, TOP HATS AND R119 CUTS AT FOCUS
  - INSTRUMENTS YOKE UP IN GRID. MIDDLE GRID IS TIGHT.
  - PROVIDE WORK AND RUNNING LIGHTS AS NEEDED
  - PROVIDE CUE LIGHTS AS PER STAGEMANAGER
  - HAZER POSITION TO BE PLACED BY LIGHTING SUPERVISOR
  - FOGGER POSITION TO BE PLACED BY LIGHTING SUPERVISOR

**SYMBOLS**

	ETC Source 4 19deg 575 watt		ETC Source 4 Pamel 575 watt
	ETC Source 4 26deg 575 watt		Diversitronic Dome Strobe
	ETC Source 4 36deg 575 watt		PAR 64 Strobe Head
	ETC Source 4 50deg 575 watt		Colortran Mini-10 650 watt
	ETC Source 4 70deg 575 watt		
	ETC Source 4 Jr. Zoom 575 watt		
	ETC Source 4 Par WFL 575 watt		

**Accessories**

- Wybron Forerunner Scroller
- Rosco I-Cue Mirrors
- City Theatrical DMX Iris
- Apollo Roto-Q

**TYPICAL**

SCROLLER  
 DMX IRIS  
 LUNIT  
 CHANNEL

**Revisions**

11-4-07	Moved Instruments to Rep Rack. Changed Link #s.
11-10-07	Channels 142-143 moved to inside of disk.
11-10-07	Channel 144 has been cut.
11-10-07	Channels 175-178 moved to C & J Pipe.
11-10-07	Channel 145 moved to West Perimeter.
11-10-07	Channel 189 moved to East Perimeter.

USD Department of Theatre and Dance  
 Carter Theatre-Old Globe  
**Pericles**  
 Directed by: Sabin Epstein  
 Set Designer: Robin Roberts  
 Lighting Designer: Christian M. DeAngelis  
 Lighting Supervisor: Chris Rynne  
 Scale: 1/2" = 1'0"  
 Date: 10.29.07  
 Drawn By: CMD

**Ground Plan**

Plate 1 of 1