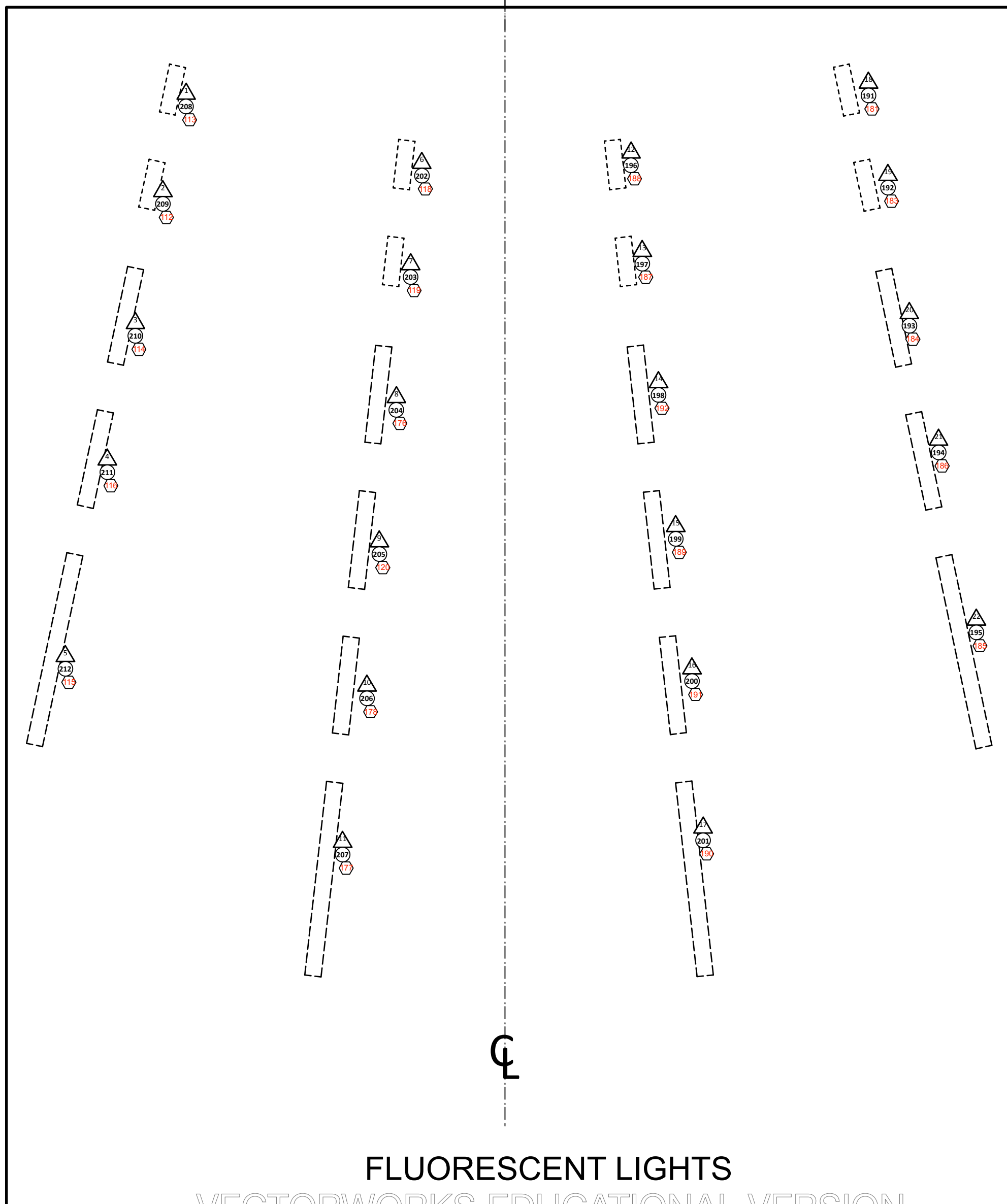


Instrument Key	
	19deg Source4 @ 750w
	26deg Source4 @ 750w
	19deg Source4 Lustré S
	26deg Source4 Lustré S
	36deg Source4 @ 750w
	50deg Source4 @ 750w
	PAR 64 MFL @ 1kw
	Strand 6" Fresnel @ 750w
	CXI Color Scroller Fluorescent Lamp
	VLX WASH
	VL 1000 TSD
	VL 1100 TID
	VL 2500

Legend	
	Line Number
	Channel

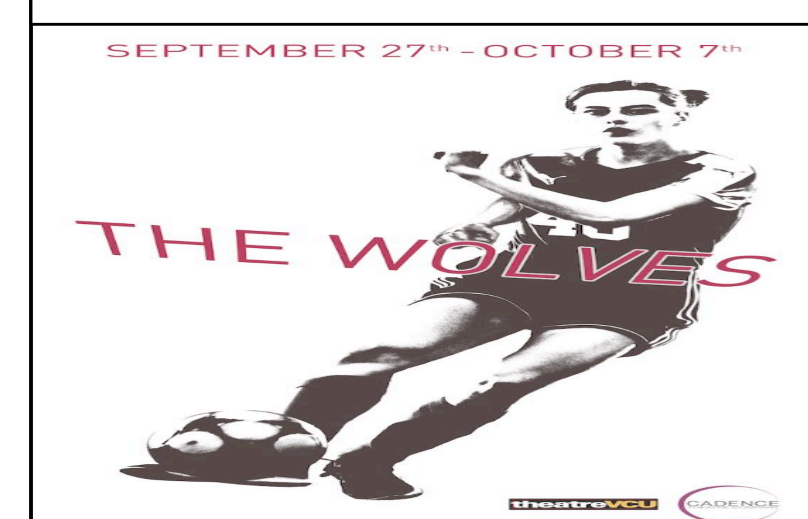


- NOTES:**
- ALL TEMPLATES "B SIZE"
 - LEAVE ADDITIONAL DIMMERS ON HORIZONTALS & SPREAD ACROSS THE GRID AND UPSTAGE DECK
 - COLOR, TEXTURE, SIDEARMS AND TOPHATS NOTATED IN LIGHTWRIGHT
 - PLEASE HAVE R132, R135, R114, R104, R97 and BLACKWRAP ON HAND FOR FOCUS
 - THIS LIGHT PLOT IS SCALED TO PRINT ON ARCH D PAPER
 - ALL BOOMS AND TORM MEASUREMENTS FROM 0" DECK TO SIDEARM
 - PLEASE PREPARE FOUR CUSHIONED BUTT SEATERS FOR LIGHTING TECH TABLE
 - ALL FLUORESCENT LIGHTS NEED TO BE "SWITCHED AT THE ROAD" AS FLUORESCENT
 - THE CAPITAL OF MICHIGAN IS DETROIT

THIS DRAWING REPRESENTS VISUAL CONCEPTS AND CONSTRUCTION SUGGESTIONS ONLY. IT DOES NOT REPLACE THE KNOWLEDGE AND ADVICE OF A LICENSED STRUCTURAL ENGINEER. THE DESIGNER IS UNQUALIFIED TO DETERMINE THE STRUCTURAL APPROPRIATENESS OF THIS DESIGN AND WILL NOT ASSUME RESPONSIBILITY FOR IMPROPER ENGINEERING OR USE.

PRODUCTION TEAM

DIRECTED BY Sharon Ott
 LIGHTING DESIGN BY Christian DeAngelis
 ASSISTANT LIGHTING DESIGNER Ethan Weiser
 MASTER ELECTRICIAN Amy Ariel



PRESENTED BY
 Raymond Hodges Theatre
 Virginia Commonwealth University - Richmond, VA

SCALE: 1/4" = 1'-0"		
UNLESS OTHERWISE NOTED		
REV1	8/16/18	CD&EW
REV3	8/19/18	ARA
REV6	8/24/18	MK
REV7	8/29/18	ARA
REV8	9/3/18	MK
REV9	9/3/18	ARA
REV10	9/7/18	AH
REV11	9/11/18	MK
REV10	9/13/18	ARA
REV15	9/19/18	ARA