

AVO Turboworld Japan

2-13-13 Musashino

Akishima-shi,

Tokyo 196-0021.

Tel: (81) 42-549-1296

Fax: (81) 42-549-1297

URL: www.avoturboworld.jp



SUBARU WRX S4 VBH 2.4L TURBO - PRODUCT SELECTION

Many of the products in this catalogue also fit the Levorg 2.4L VNH model therefore each part will have a model identifier to show the models they fit.

2022/01 + SUBARU WRX **VBH** / SPORTS SEDAN

2020/12 + SUBARU LEVORG **VNH** /SPORTS WAGON

AVO Turboworld Parts List for WRX S4 VBH 2.4L Turbo

Part Number	Description	Page
<u>S2F22G94ABLKT</u>	Top Mount Intercooler	3
<u>S2D227043001T</u>	Turbo Discharge Pipe	4
<u>S7W22741ABLKJ</u>	Turbo Intake Pipe	5
<u>S7W22G3NA024T</u>	Exhaust Manifold	6
<u>S2A2270QBAFLT</u>	Oil Pan Baffle	7
<u>S6Z1293NA001A</u>	Exhaust Manifold Stud & Gasket Kit	8
<u>MAPADAPT-WRX</u>	Pressure Sensor Adaptor	8
<u>S2V18F4VA001J</u>	Flat Panel Air Filter	9
<u>S2A22900APLGT</u>	Turbo Block Off Plate	9
<u>S7W20C0Y4***T</u>	Radiator Shroud	10
<u>S7W20C0G4***T</u>	Engine Belt Cover	11
<u>S7W20C8E4***T</u>	Front Fender Inner Cover	12
<u>S2D22G3GAMETJ</u>	Front Pipe Kit - Twin Hi-Flow Cats	13
<u>S7W20M3MA065T</u>	2.5in Center Pipe Exhaust	14
<u>S2D22M3MA076T</u>	3.0in Center Pipe Exhaust	15
<u>S2D22M3HA065T</u>	2.5in Catback Exhaust System - Sedan	16
<u>S2D22M3HA076T</u>	3.0in Catback Exhaust System - Sedan	17
<u>S7W22G3NA065T</u>	2.5in Dual Rear Muffler - Sedan	18
<u>S7W20E1GU320J</u>	Adjustable Stabilizer Link - Front	19
<u>S2C07G1HUB01J</u>	Adjustable Stabilizer Link - Rear	19
<u>S7W1581GV0**T</u>	Stabilizer Bush - Front	20
<u>S7W1581GV0**T</u>	Stabilizer Bush - Rear - Sedan	20
<u>S2V1881HV0**T</u>	Stabilizer Bush - Rear - Wagon	20
<u>SUX9291KV000J</u>	Stabilizer Bar Stopper	21
<u>S7W1581GNTMPT</u>	Rear Diff Mount Bush - Front	21
<u>S7W1581HNTMPT</u>	Rear Diff Mount Bush - Rear	22
<u>S7W1581KNDMBT</u>	Rear Sub Member Mount Bush	22
<u>S6Z12E1HXARM</u>	Adjustable Lower Arm - Rear	23

Top Mount Intercooler

(VBH, VNH)

Part Number: S2F22G94ABLK

11890 / 4582459079920

Improved airflow and cooler intake air temperature is the first step to better performance and throttle response, our top mount intercooler offers greater air flow volume and better cooling efficiency than the OEM part. Tested to fit with the genuine STI flexible strut bar.



Turbo Discharge Pipe

(VBH, VNH)

Part Number: S2D227043001T

118896 / 4582459079821

Stainless steel with gentle curves for improved airflow plus the strength to maintain it's shape under any boost level equals better performance.



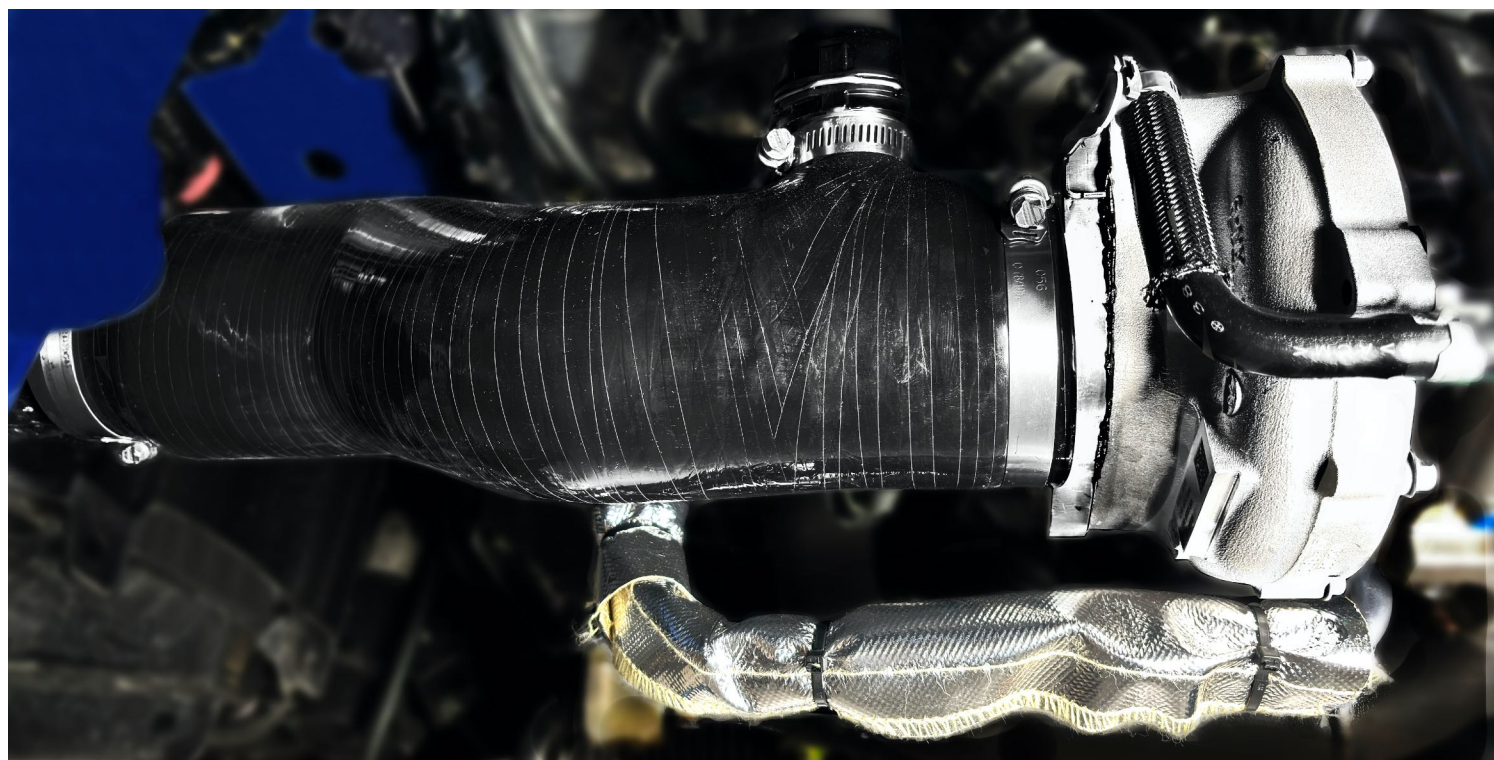
Turbo Intake Pipe

(VBH, VNH)

Part Number: S7W22741ABLKJ

11912 / 4582459079203

90mm one piece pipe constructed from 6 ply silicone for maximum strength to maintain it's shape under high boost levels. More air flow equals better performance.



Exhaust Manifold

(VBH, VNH)

Part Numbers: S7W22G3NA024T

11856 / 4582459079654

Equal length exhaust manifold will reduce back pressure when increasing the boost. Made from 1 3/4" purge tig welded 304 stainless 2mm thick tubing with 12mm laser cut flanges.



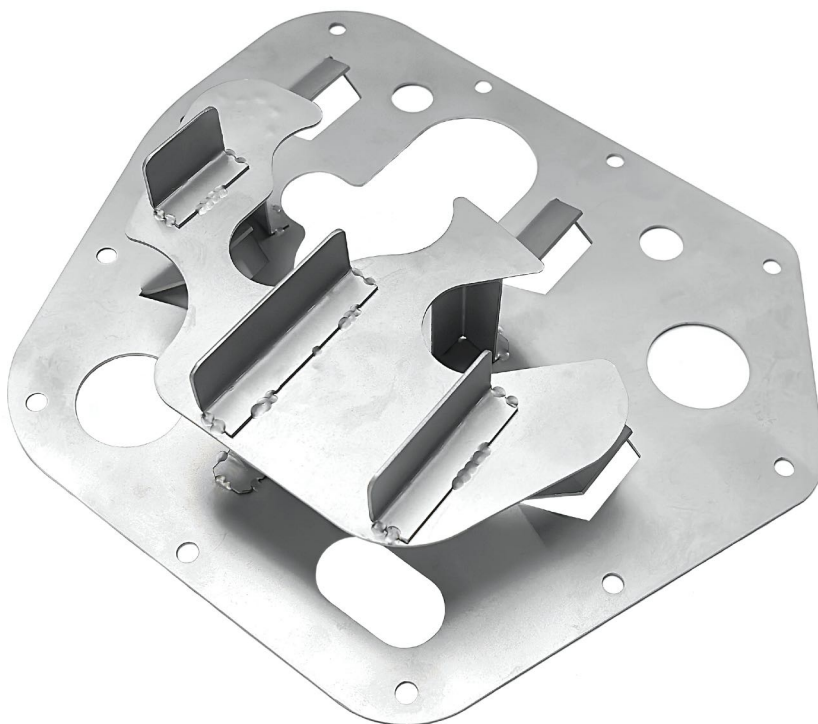
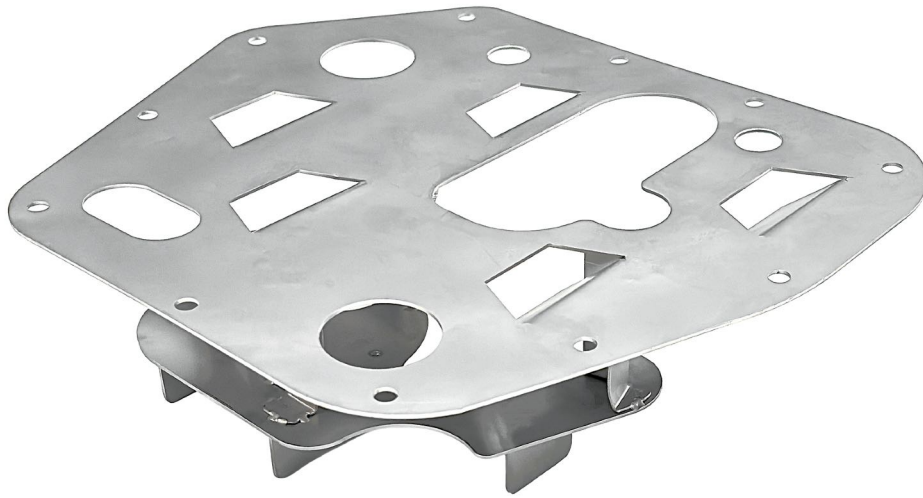
Engine Oil Pan Baffle

(VBH, VNH)

Part Numbers: S2A2270QBAFLT

11898 / 4582459079197

This baffle helps protect the engine from oil surges that can occur during sports driving under cornering / acceleration / deceleration where the higher G forces can create oil starvation at the pump pickup in the sump.



Exhaust Manifold Stud & Gasket Kit

(VBH, VNH)

Part Number: S6Z1293NA001A

11430 / 4582459075663

It's not uncommon for the OEM stud bolts to stretch. This kit features Inconel stud bolts and 309 stainless nuts and washers to combat this issue. New Gaskets also included.

Pressure Sensor Adaptor - Intake Manifold

(VBH, VNH)

Part Number: MAPADAPT-WRX

11839 / 4582459079999

Its convenient for use to pass the vacuum line through turbochargers, superchargers, and boost meters.



Flat Panel Air Filter

(VBH, VNH)

Part Number: S2V18F4VA001J

11629 / 4582459078732

It is a filter with a low pressure loss compared to the original one by partitioning special fibers with stainless steel mesh and it is a type that can be cleaned if it gets dirty.



Turbo Block Off Plate

(VBH, VNH)

Part Number: S2A22900APLGT

11915 / 4582459079982

To fit an aftermarket BOV while maintaining the original turbocharger it is necessary to relocate to a different location, our block off plate correctly seals the OEM position to make such relocation possible.



Radiator Shroud

(VBH, VNH)

Part Numbers: S7W20C0Y4REDT
S7W20C0Y4BLKT
S7W20C0Y4BLUT
S7W20C0Y4ORGT

11849 / 4582459079869
11869 / 4582459079876
11870 / 4582459079883
11871 / 4582459079890

The AVO Turboworld radiator shroud is easy to install and a nice addition to dress up the engine room. There are 4 colors to choose from to compliment our other parts.



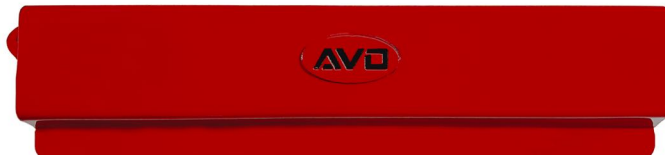
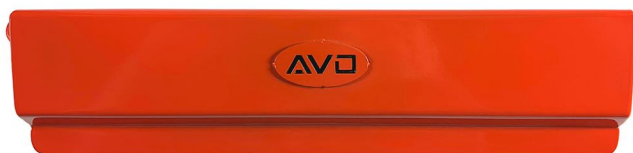
Engine Belt Cover

(VBH, VNH)

Part Numbers: S7W20C0G4REDT
S7W20C0G4BLKT
S7W20C0G4BLUT
S7W20C0G4ORGT

11824 / 4582459077889
11826 / 4582459077896
11825 / 4582459077902
11827 / 4582459077919

The AVO Turboworld engine belt cover makes it easy to dress up the engine bay with a simple installation method. There are 4 colors to choose from.



Front Fender Inner Cover

(VBH, VNH)

Part Numbers: S7W20C8E4REDT
S7W20C8E4BLKT
S7W20C8E4BLUT
S7W20C8E4ORGT

11836 / 4582459079494
11846 / 4582459079500
11847 / 4582459079517
11848 / 4582459079524

The AVO Turboworld inner fender cover gives a cohesive appearance to the engine bay when fitted with our other color matched accessories. There are 4 colors to choose from.



Front Pipe Kit - Twin Hi-Flow Cats - MT Only

(VBH, VNH)

Part Number: S2D22G3GAMETJ

11894 / 4582459079975

3" Stainless Steel Ceramic Coated J-Pipe with 160 Cell Race Metal Cat & Intermediate Pipe complete with OEM style flex setup as to fit with the factory OEM cat back exhaust.



2.5in Center Pipe Exhaust

(VBH, VNH)

Part Number: S7W20M3MA065T

11903 / 4582459079722

Our Hi-flow center pipe exhaust system improves gas flow and accentuates the classic boxer engine sound. Fits to the OEM front pipe and mufflers.



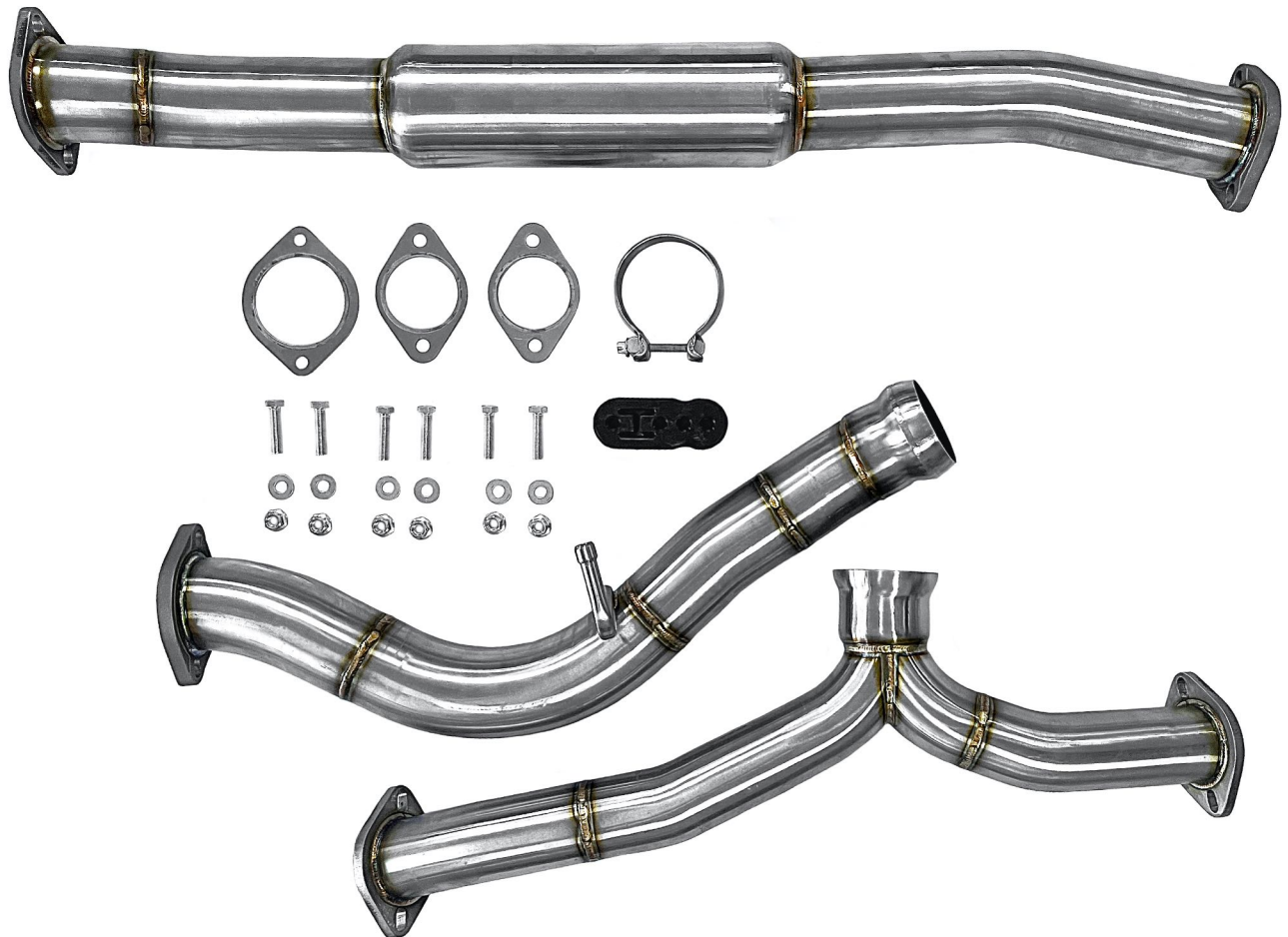
3.0in Center Pipe Exhaust

(VBH, VNH)

Part Number: S2D22M3MA076T

11876 / 4582459079715

Looking for an even more aggressive exhaust sound, our Hi-flow 3.0in center pipe kit offers even better flow and more sound. Fits to the OEM front pipe and mufflers.

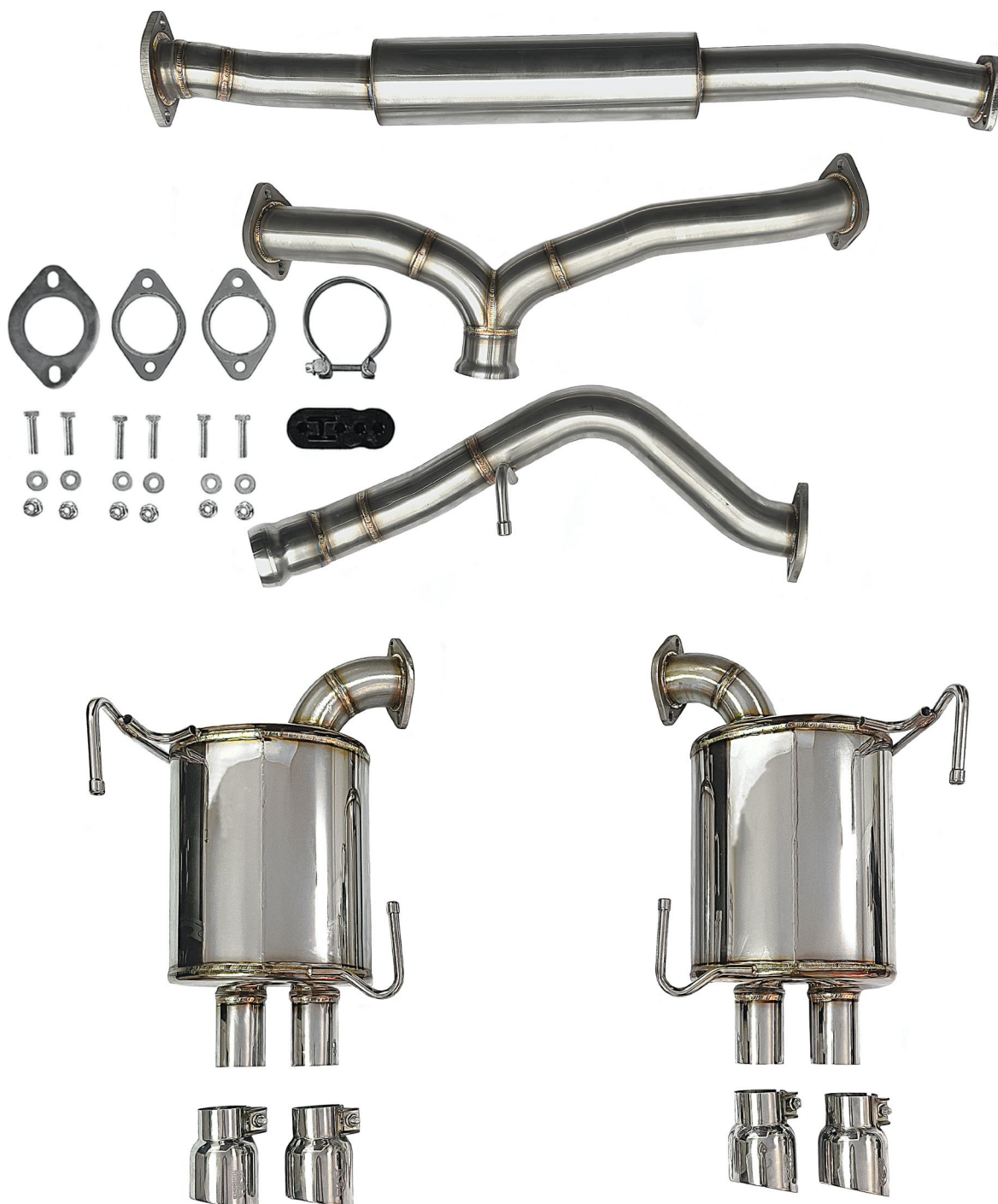


2.5in Catback Exhaust System - Sedan

(VBH)

Part Number: S2D22M3HA065T- (Polished Tips) 11875 / 4582459079678
(Colored Tips) 11917 / 4582459079739

The catback system has a tapered flange on the front so that it can be fitted to the standard OEM front pipe or the AVO front pipe with a donut gasket setup. As a result, the flex in the system will work as intended from the factory.



3.0in Catback Exhaust System - Sedan

(VBH)

Part Number: S2D22M3HA076T - (Polished Tips) 11874 / 4582459079685
(Colored Tips) 11918 / 4582459079746

Specially designed to have a minimum bends while maintaining a bolt-on fit, it allows for maximum flow and a great sound that highlights the boxer's rumble. The Y joint part of the rear piece from the center pipe can be fine-tuned to the left and right difference of the rear muffler and the amount of height protrusion with a special roll adjuster type fitting.



2.5in Dual Rear Muffler - Twin Tips - Sedan

(VBH)

Part Number: S7W22G3NA065T - (Polished Tips) 11664 / 4582459079692

(Colored Tips) 11919 / 4582459079708

Full stainless steel rear mufflers set with 65mm inlet piping and 90mm quad outlets either polished or burnt finish. Improved flow and great looks that will last.



Adjustable Stabilizer Link - Front

(VBH, VNH)

Part Number: S7W20E1GU320J

11908 / 4582459079913

AVO Stabilizer Links offer improved positioning and operation of the stabilizer bar and results in more reliable operation and therefore more accurate feel when cornering.

Adjustable Stabilizer Link - Rear

(VBH, VNH)

Part Number: S2C07G1HUB01J

11889 / 4582459078657

AVO Stabilizer Links offer improved positioning and operation of the stabilizer bar and results in more reliable operation and therefore more accurate feel when cornering.



Stabilizer Bush - Front

(VBH, VNH)

Part Numbers: S7W1581GV023T
S7W1581GV026T

11682 / 4582459079067
11688 / 4582459079098

AVO Stabilizer Bushes are manufactured from PU which offers greater rigidity compared to the rubber originals and improves operation of the stabilizer bar.

Stabilizer Bush - Rear

(VBH)

Part Numbers: S7W1581GV019T
S7W1581GV021T

11920 / 4582459079968
11698 / 4582459079951

Stabilizer Bush - Rear

(VNH)

Part Numbers: S2V1881HV019T
S2V1881HV021T

11916 / 4582459079944
11904 / 4582459079906

AVO Stabilizer Bushes are manufactured from PU which offers greater rigidity compared to the rubber originals and improves operation of the stabilizer bar.



Stabilizer Bar Stopper

(VBH, VNH)

Part Number: SUX9291KV000J

11686 / 4582459075793

It is a bush stopper that does not allow the stabilizer bar to slide too much so that the stabilizer itself does not swing from side to side reducing its efficiency.



Rear Differential Mount Bush - Front Side

(VBH, VNH)

Part Number: S7W1581GNTMPT

11654 / 4582459079050

Reduce the movement of the rear differential during cornering and under strong acceleration and or deceleration for improved tyre contact on the road. For best results the rear side S7W1581HNTMPT also needs to be installed.



Rear Differential Mount Bush - Rear Side

(VBH, VNH)

Part Number: S7W1581HNTMPT

11656 / 4582459078978

Reduce the movement of the rear differential during cornering and under strong acceleration and or deceleration for improved tyre contact on the road. For best results the front side S7W1581GNTMPT also needs to be installed.

Rear Sub Member Mount Bush

(VBH, VNH)

Part Number: S7W1581KNDBMT

11653 / 4582459079012

With a total of 8 upper and lower subframe bushes that support the rear differential and lower arm to reduce lateral movement during cornering.



Adjustable Lower Arm - Rear

(VBH, VNH)

Part Number: S6Z12E1HXARM

11905 / 4582459076240

With our adjustable lower arm you can move " $\pm 10\text{mm}$ to the in/out side" from the original value which allows precise camber setting on both left & right sides enhancing driving feel.

