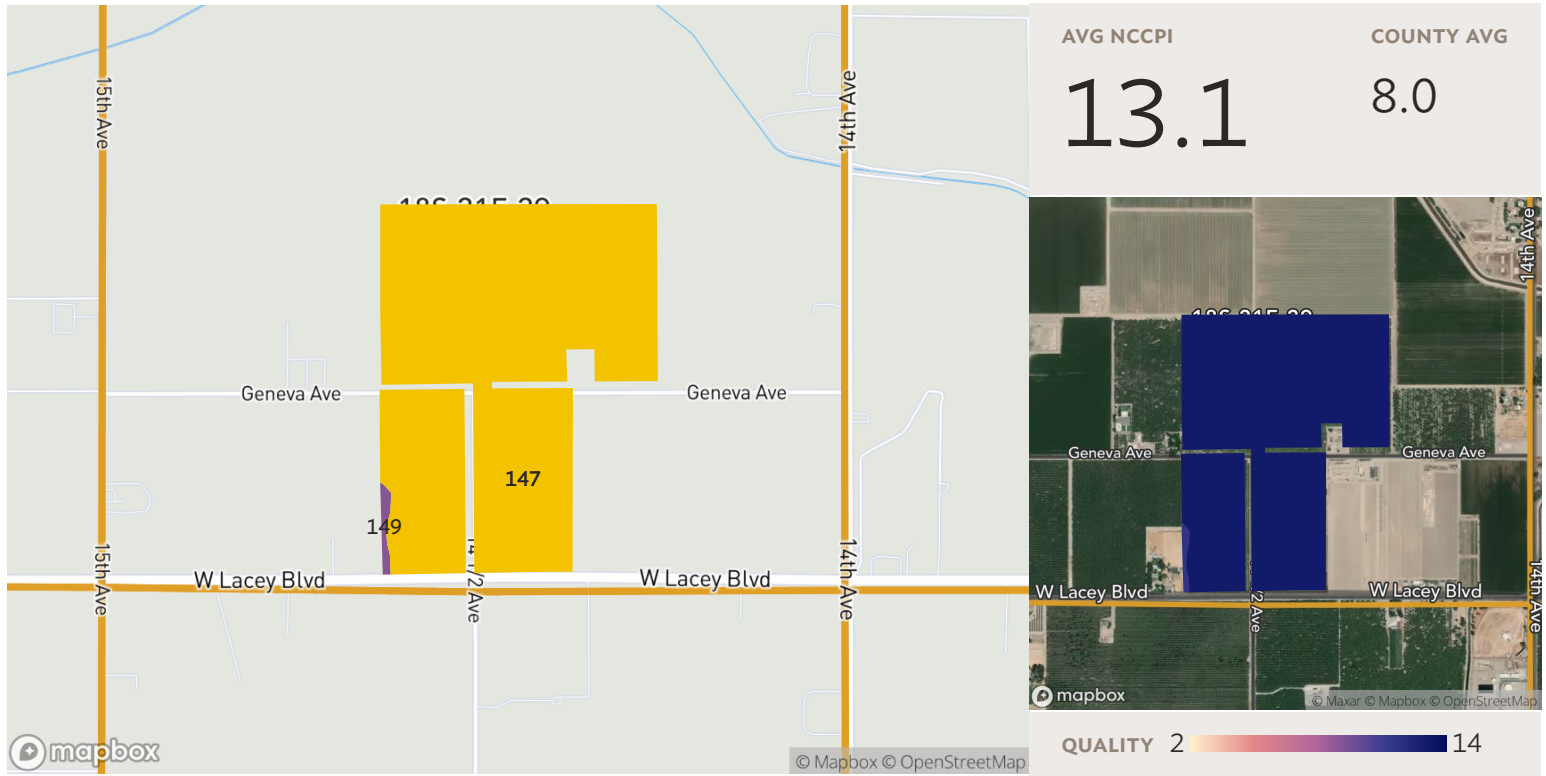


5 fields, 95 acres in Kings County, CA

TOWNSHIP/SECTION 18S 21E - 29



Source: NRCS Soil Survey

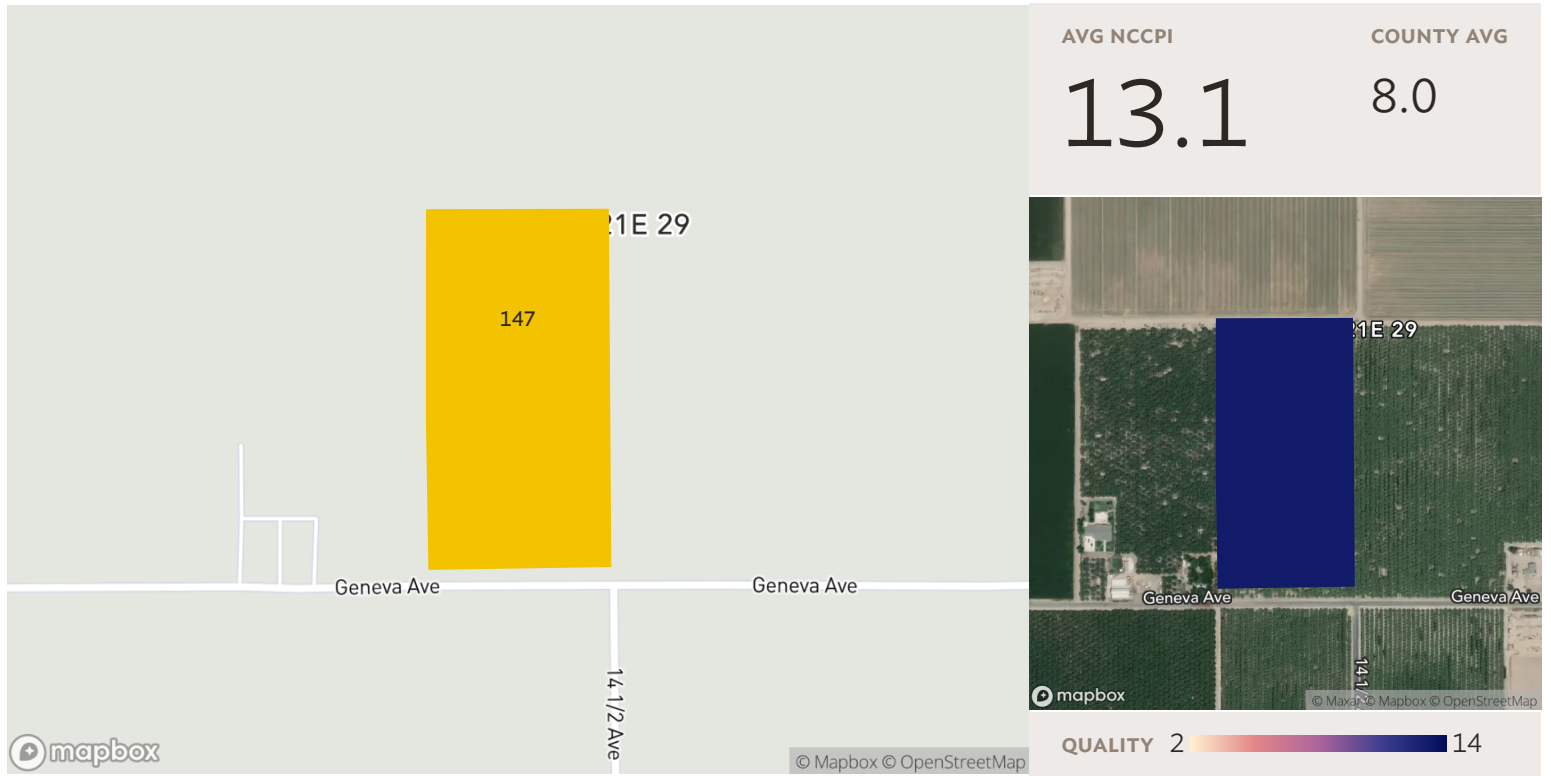
## All fields

95 ac.

SOIL CODE	SOIL DESCRIPTION	ACRES	PERCENTAGE OF FIELD	SOIL CLASS	NCCPI
147	Nord fine sandy loam	94.48	99.2%	4	13.1
149	Nord complex	0.78	0.8%	4	11.5
					<b>13.1</b>
					<b>95.26</b>

5 fields, 95 acres in Kings County, CA

TOWNSHIP/SECTION 18S 21E - 29



## Field 1

Source: NRCS Soil Survey

19 ac.

SOIL CODE	SOIL DESCRIPTION	ACRES	PERCENTAGE OF FIELD	SOIL CLASS	NCCPI
■ 147	Nord fine sandy loam	19.08	100.0%	4	13.1
					<b>13.1</b>
				<b>19.08</b>	

5 fields, 95 acres in Kings County, CA

TOWNSHIP/SECTION 18S 21E - 29



## Field 2

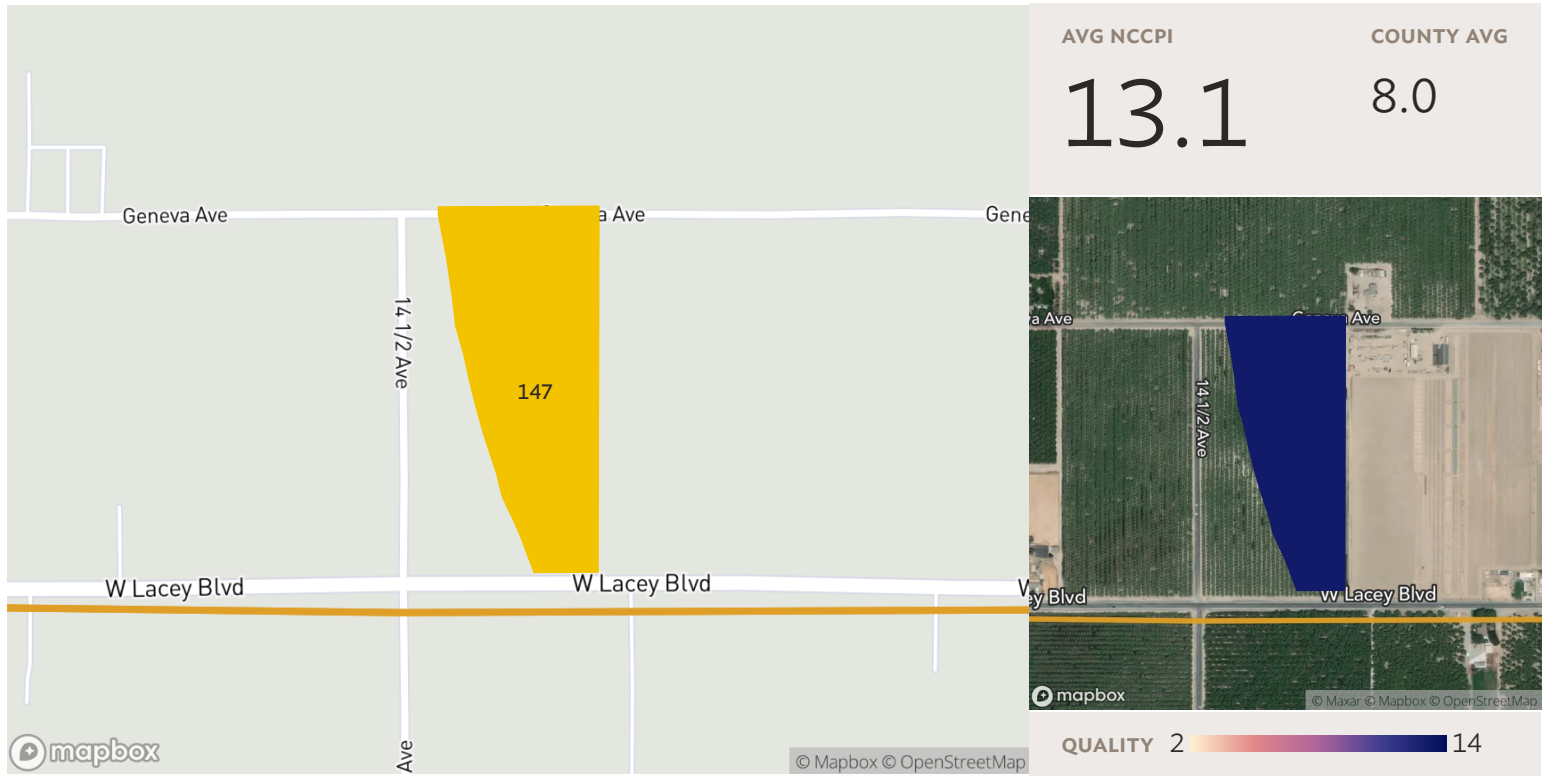
Source: NRCS Soil Survey

41 ac.

SOIL CODE	SOIL DESCRIPTION	ACRES	PERCENTAGE OF FIELD	SOIL CLASS	NCCPI	
■ 147	Nord fine sandy loam	41.19	100.0%	4	13.1	
					<b>41.19</b>	<b>13.1</b>

5 fields, 95 acres in Kings County, CA

TOWNSHIP/SECTION 18S 21E - 29



### Field 3

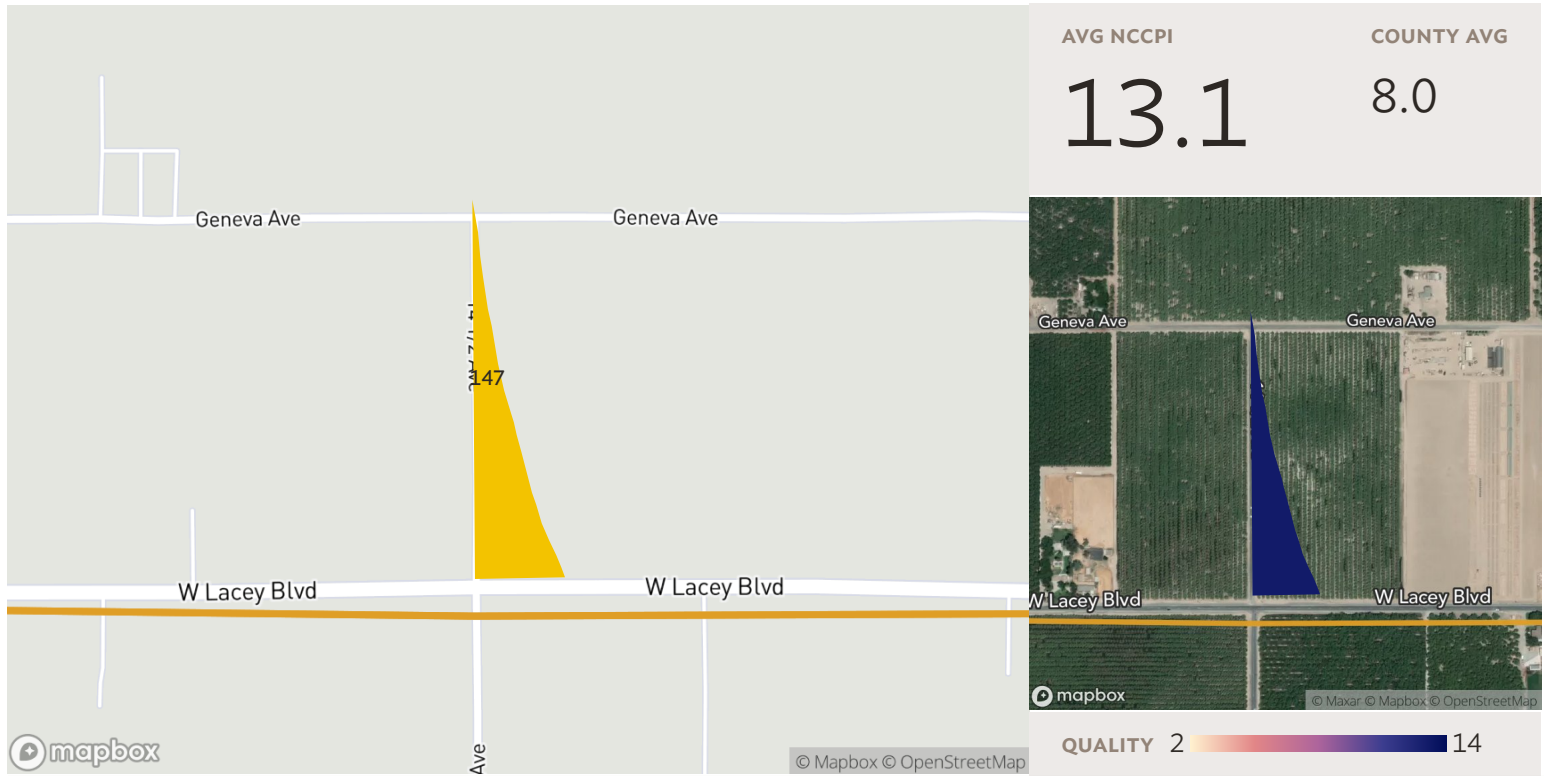
13 ac.

Source: NRCS Soil Survey

SOIL CODE	SOIL DESCRIPTION	ACRES	PERCENTAGE OF FIELD	SOIL CLASS	NCCPI
■ 147	Nord fine sandy loam	13.08	100.0%	4	13.1
<b>13.08</b>					<b>13.1</b>

5 fields, 95 acres in Kings County, CA

TOWNSHIP/SECTION 18S 21E - 29



AVG NCCPI

13.1

COUNTY AVG

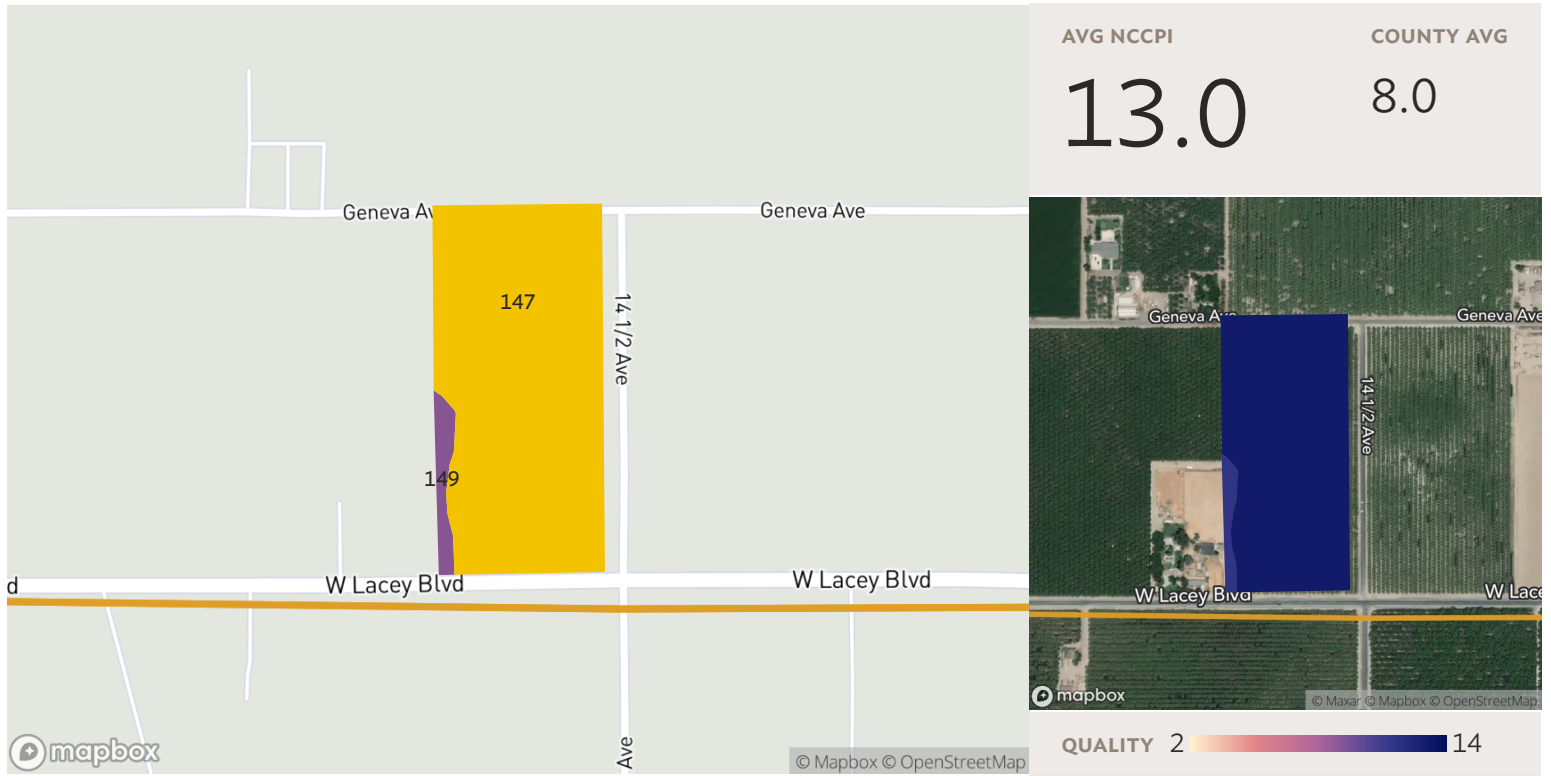
8.0

## Field 4

Source: NRCS Soil Survey

4 ac.

SOIL CODE	SOIL DESCRIPTION	ACRES	PERCENTAGE OF FIELD	SOIL CLASS	NCCPI
■ 147	Nord fine sandy loam	3.89	100.0%	4	13.1
		<b>3.89</b>			<b>13.1</b>



## Field 5

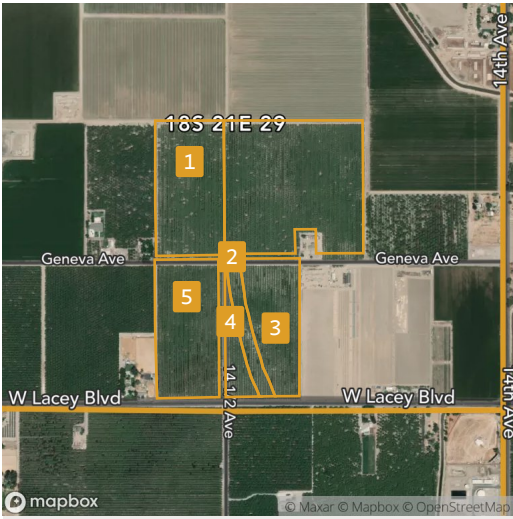
Source: NRCS Soil Survey

18 ac.

SOIL CODE	SOIL DESCRIPTION	ACRES	PERCENTAGE OF FIELD	SOIL CLASS	NCCPI
■ 147	Nord fine sandy loam	17.24	95.7%	4	13.1
■ 149	Nord complex	0.78	4.3%	4	11.5
<b>18.02</b>					<b>13.0</b>

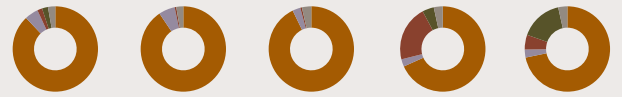


5 fields, 95 acres in Kings County, CA TOWNSHIP/SECTION 18S 21E - 29

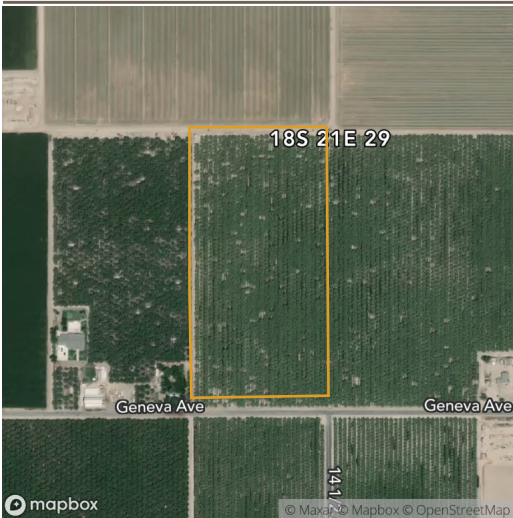


### All fields

95 ac.



	2020	2019	2018	2017	2016
Almonds	88.0%	90.6%	92.8%	68.3%	71.8%
Non-Cropland	5.2%	6.2%	3.0%	2.8%	3.0%
Walnuts	1.8%	0.6%	0.6%	21.1%	5.6%
Pistachios	2.2%	-	-	4.4%	16.2%
Other	2.8%	2.7%	3.6%	3.4%	3.5%



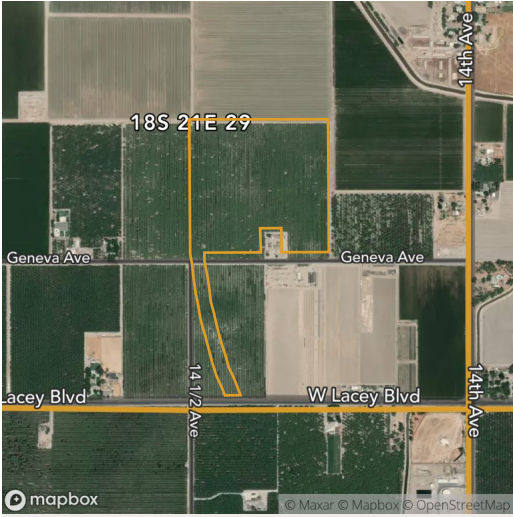
### Field 1

19 ac.



	2020	2019	2018	2017	2016
Almonds	96.4%	95.0%	95.9%	72.6%	87.2%
Walnuts	-	1.4%	1.4%	22.9%	5.3%
Other	3.6%	3.6%	2.7%	4.4%	7.5%

5 fields, 95 acres in Kings County, CA TOWNSHIP/SECTION 18S 21E - 29

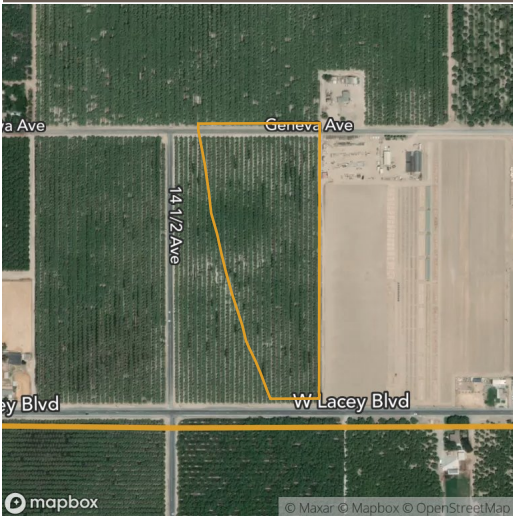


### Field 2

41 ac.

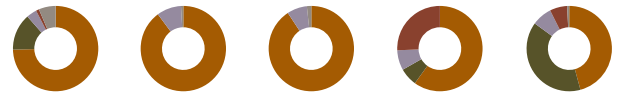


	2020	2019	2018	2017	2016
Almonds	89.6%	94.6%	96.1%	78.6%	84.5%
Walnuts	3.7%	0.2%	0.2%	11.8%	2.4%
Alfalfa	0.6%	1.5%	2.9%	6.0%	6.5%
Pistachios	0.8%	-	-	3.3%	6.3%
Other	5.3%	3.7%	0.8%	0.3%	0.3%



### Field 3

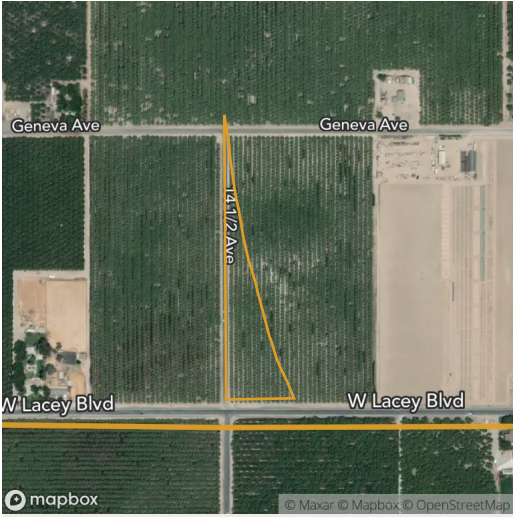
13 ac.



	2020	2019	2018	2017	2016
Almonds	74.6%	89.8%	90.7%	60.0%	45.8%
Pistachios	13.9%	-	-	6.8%	39.3%
Non-Cropland	3.9%	9.3%	7.6%	7.6%	7.6%
Walnuts	1.1%	-	-	25.6%	6.6%
Other	6.4%	0.9%	1.7%	-	0.8%



5 fields, 95 acres in Kings County, CA TOWNSHIP/SECTION 18S 21E - 29

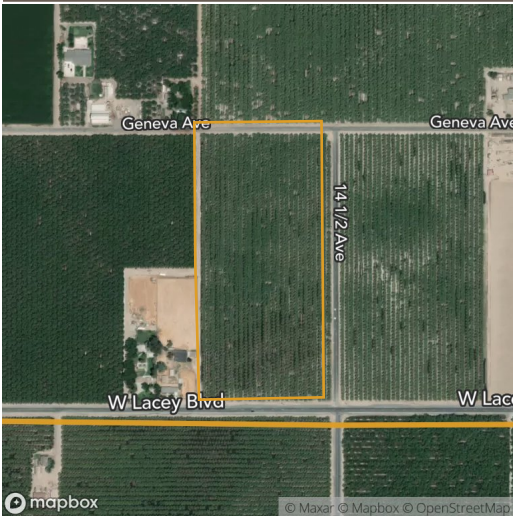


### Field 4

4 ac.



	2020	2019	2018	2017	2016
Almonds	85.1%	52.8%	87.9%	31.1%	28.6%
Non-Cropland	13.1%	46.9%	8.9%	8.9%	8.9%
Walnuts	1.8%	-	-	57.5%	5.7%
Pistachios	-	-	-	2.2%	56.5%
Other	-	0.3%	3.2%	0.3%	0.3%



### Field 5

18 ac.



	2020	2019	2018	2017	2016
Almonds	85.6%	85.2%	84.6%	54.3%	54.6%
Non-Cropland	11.9%	10.4%	7.8%	6.6%	7.8%
Walnuts	-	1.3%	1.3%	29.2%	12.3%
Crop Undetermined	0.9%	2.9%	6.2%	-	-
Pistachios	-	-	-	8.4%	25.3%
Other	1.6%	0.2%	0.2%	1.5%	-

Source: NASS Cropland Data Layer