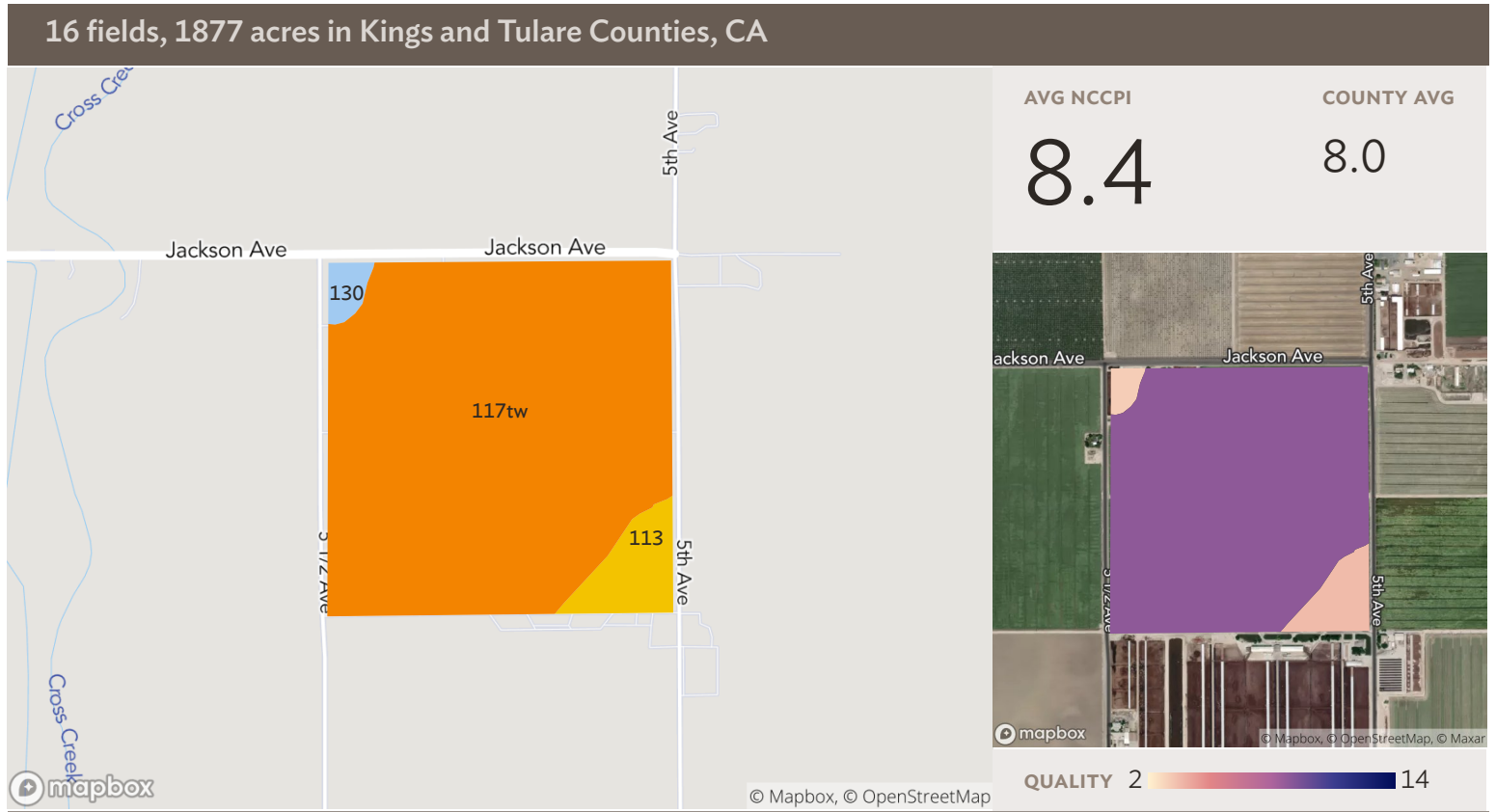


All fields

Source: NRCS Soil Survey

1877 ac

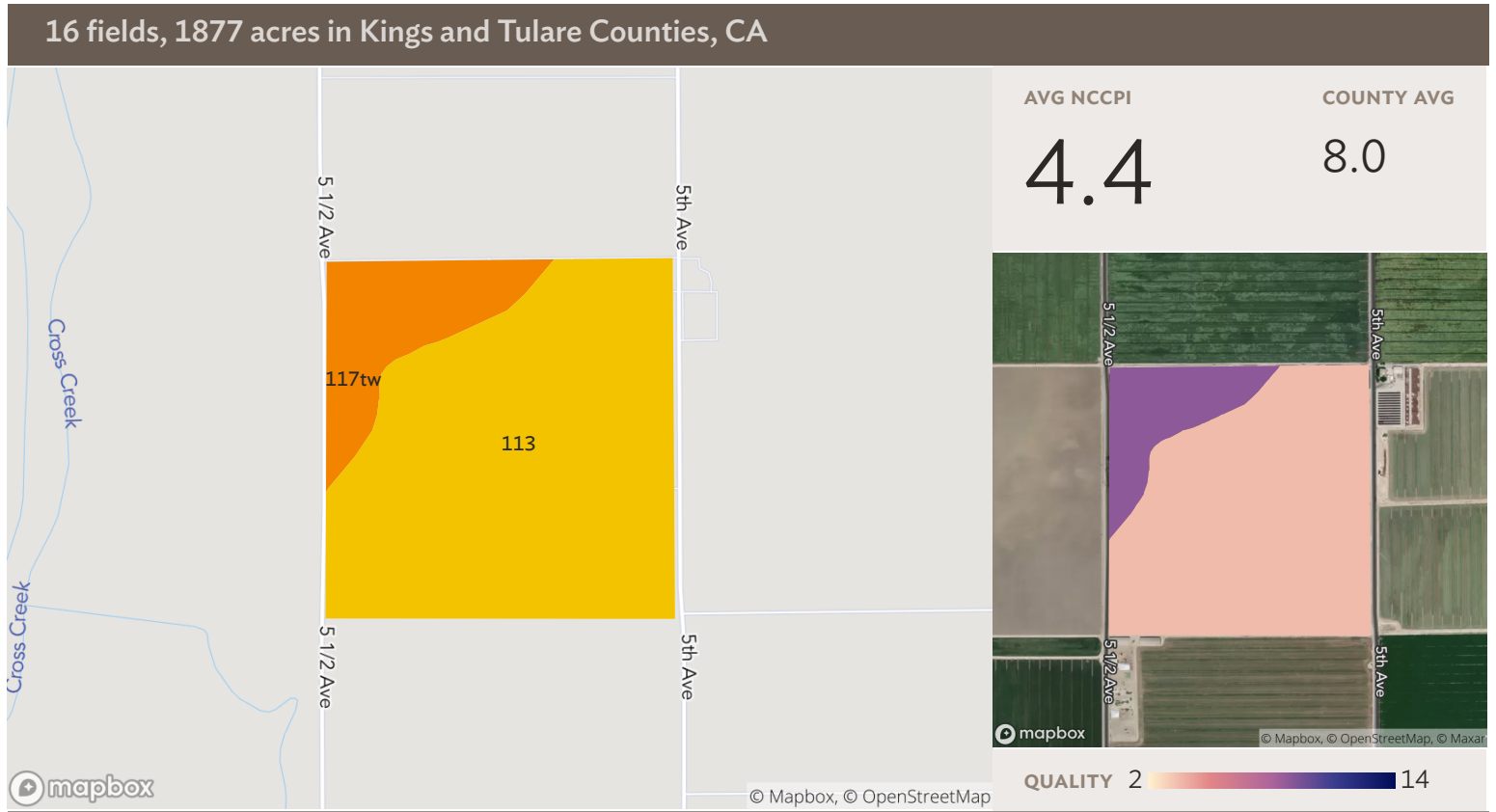
SOIL CODE	SOIL DESCRIPTION	ACRES	PERCENTAGE OF FIELD	SOIL CLASS	NCCPI
113	Garces loam	844.58	45.0%	7	3.5
117	Gambogy loam, drained, 0 to 1 percent slopes	323.25	17.2%	4	8.8
117tw	Gambogy loam, drained, 0 to 1 percent slopes	291.08	15.5%	4	8.8
130	Kimberlina fine sandy loam, saline-alkali	278.46	14.8%	7	3.0
149	Nord complex	67.18	3.6%	4	11.5
120	Grangeville fine sandy loam, partially drained	59.96	3.2%	6	13.6
108	Colpien loam, 0 to 2 percent slopes	11.65	0.6%	4	14.2
181	Water	1.33	0.1%	8	N/A
		1,876.16	99.9%		5.8



Field 1

151 ac

SOIL CODE	SOIL DESCRIPTION	ACRES	PERCENTAGE OF FIELD	SOIL CLASS	NCCPI
117tw	Gambogy loam, drained, 0 to 1 percent slopes	139.00	91.9%	4	8.8
113	Garces loam	9.61	6.4%	7	3.5
130	Kimberlina fine sandy loam, saline-alkali	2.66	1.8%	7	3.0
151.28					8.4

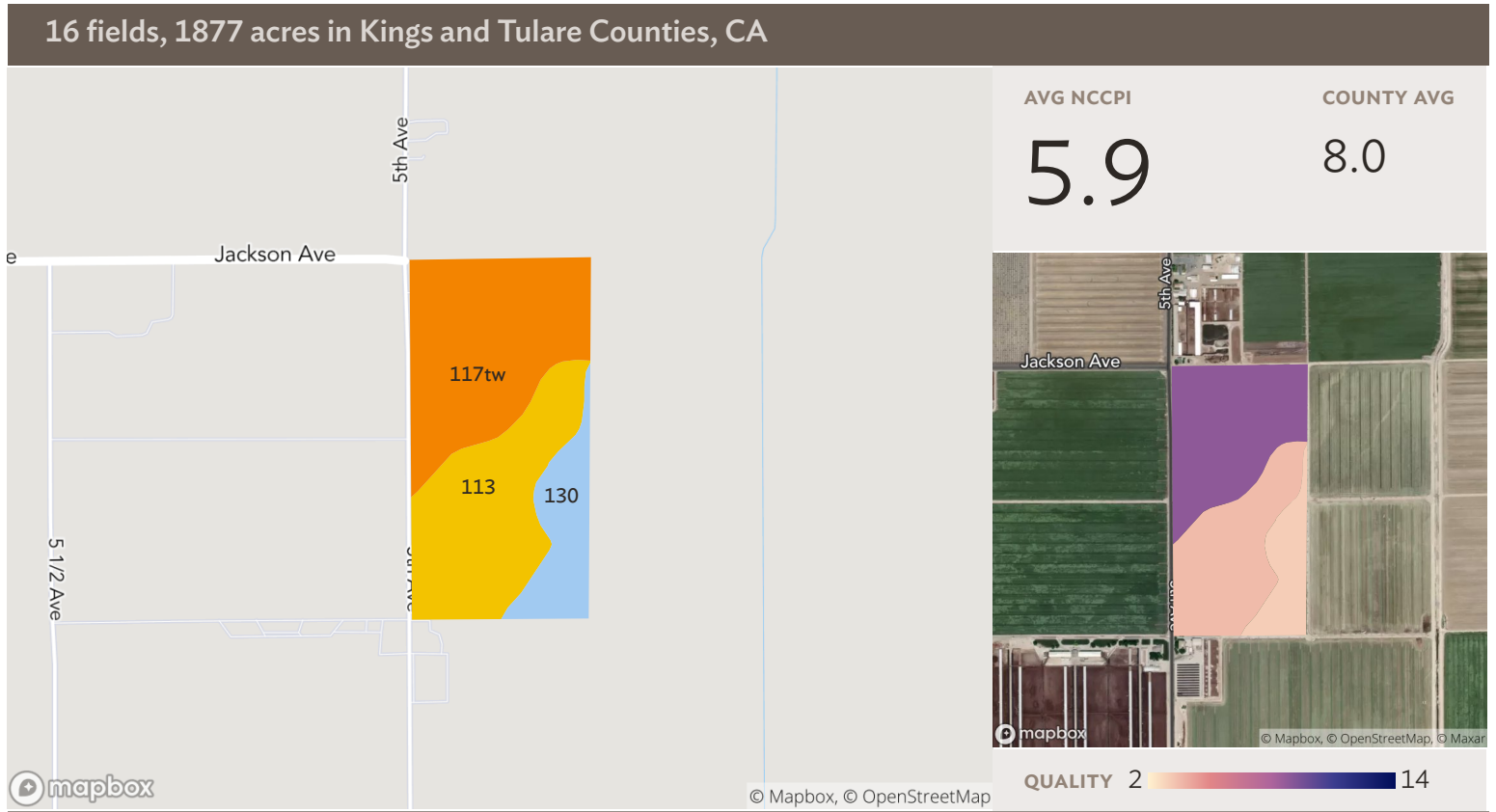


Field 2

Source: NRCS Soil Survey

155 ac

SOIL CODE	SOIL DESCRIPTION	ACRES	PERCENTAGE OF FIELD	SOIL CLASS	NCCPI
■ 113	Garces loam	128.40	82.6%	7	3.5
■ 117tw	Gambogy loam, drained, 0 to 1 percent slopes	26.98	17.4%	4	8.8
		155.37			4.4

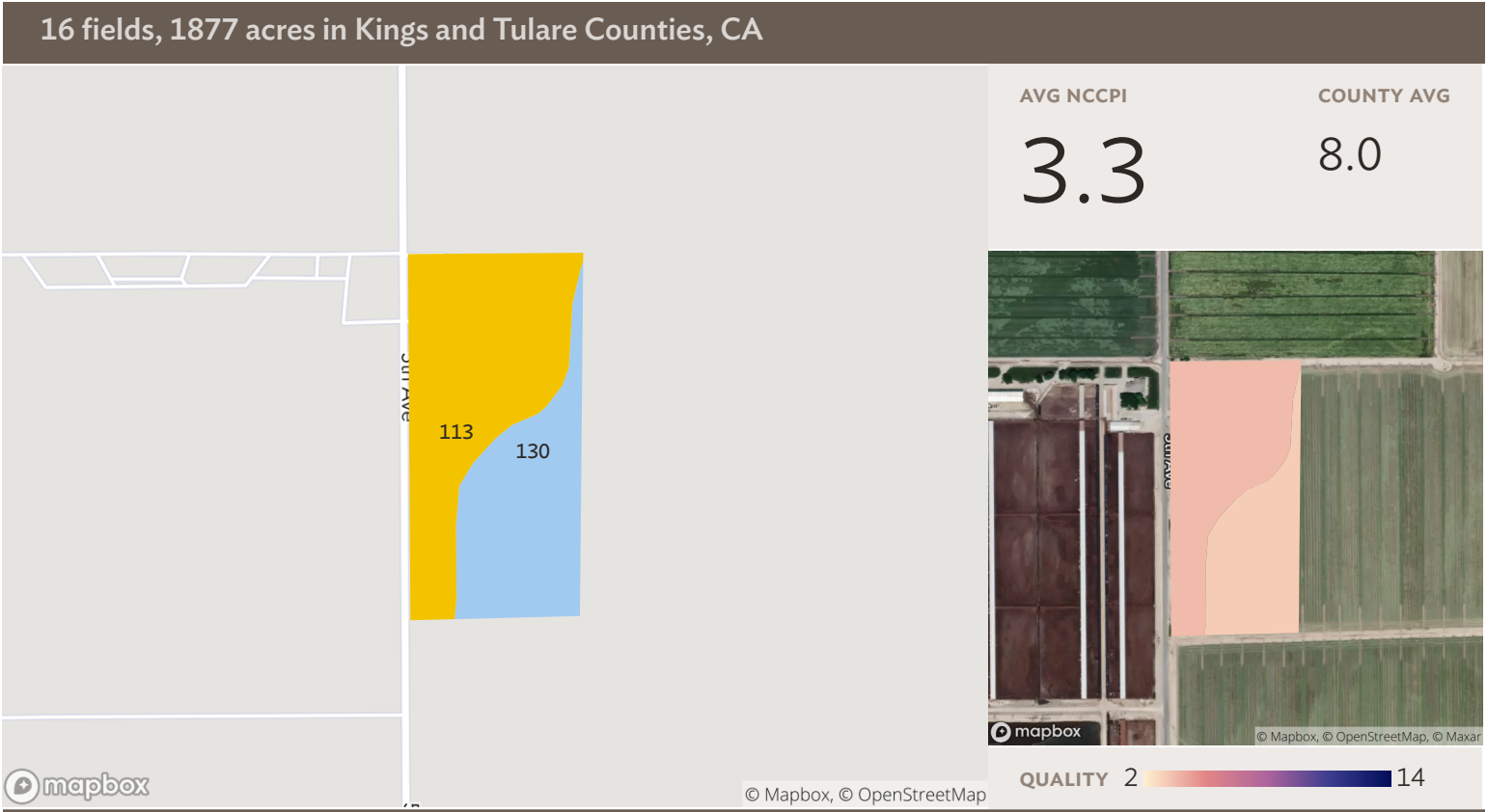


Field 3

Source: NRCS Soil Survey

80 ac

SOIL CODE	SOIL DESCRIPTION	ACRES	PERCENTAGE OF FIELD	SOIL CLASS	NCCPI
117tw	Gambogy loam, drained, 0 to 1 percent slopes	36.84	45.8%	4	8.8
113	Garces loam	31.34	39.0%	7	3.5
130	Kimberlina fine sandy loam, saline-alkali	12.24	15.2%	7	3.0
80.41					5.9

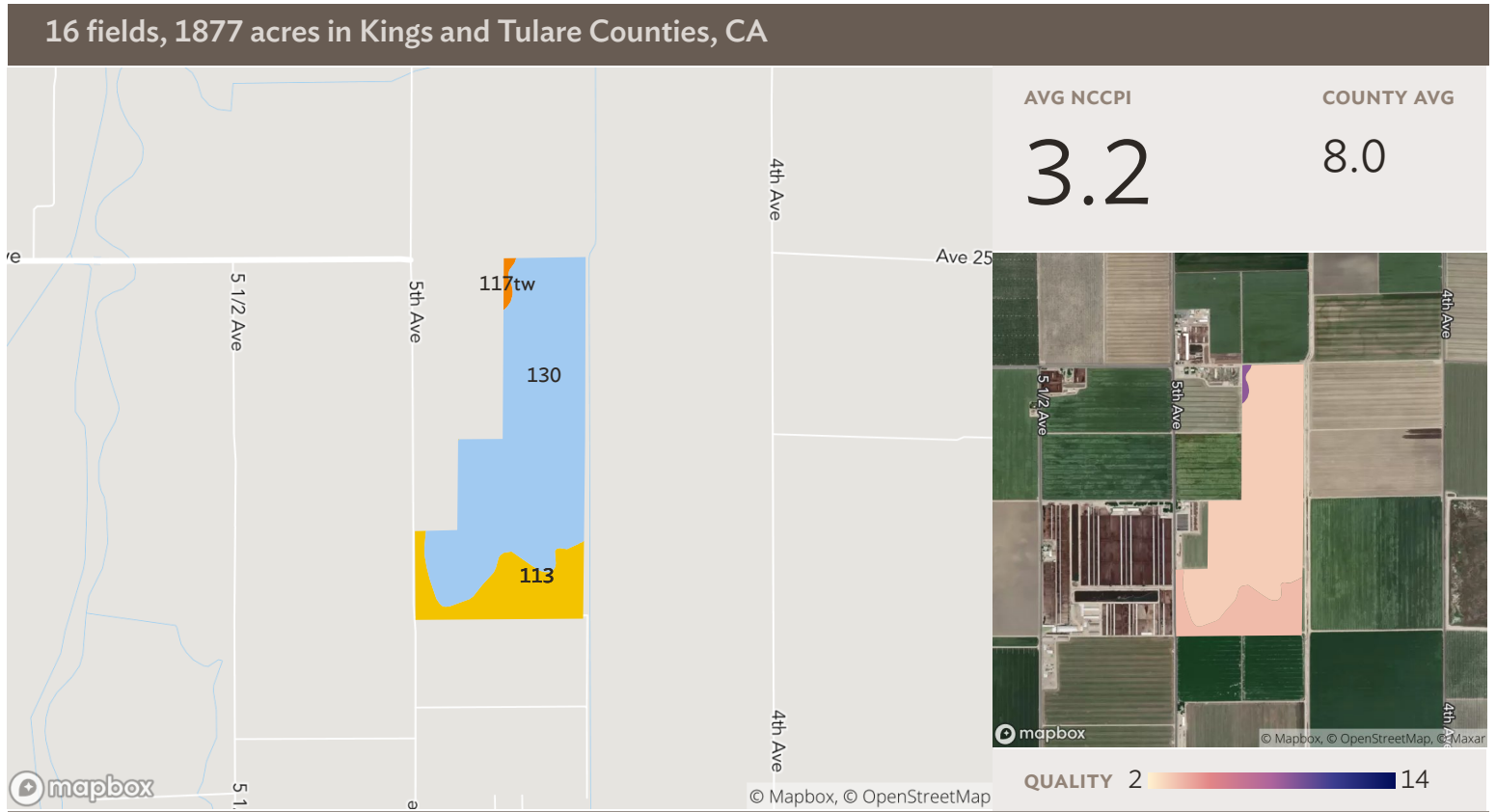


Source: NRCS Soil Survey

Field 4

20 ac

SOIL CODE	SOIL DESCRIPTION	ACRES	PERCENTAGE OF FIELD	SOIL CLASS	NCCPI
113	Garces loam	11.74	60.0%	7	3.5
130	Kimberlina fine sandy loam, saline-alkali	7.84	40.0%	7	3.0
19.57					3.3

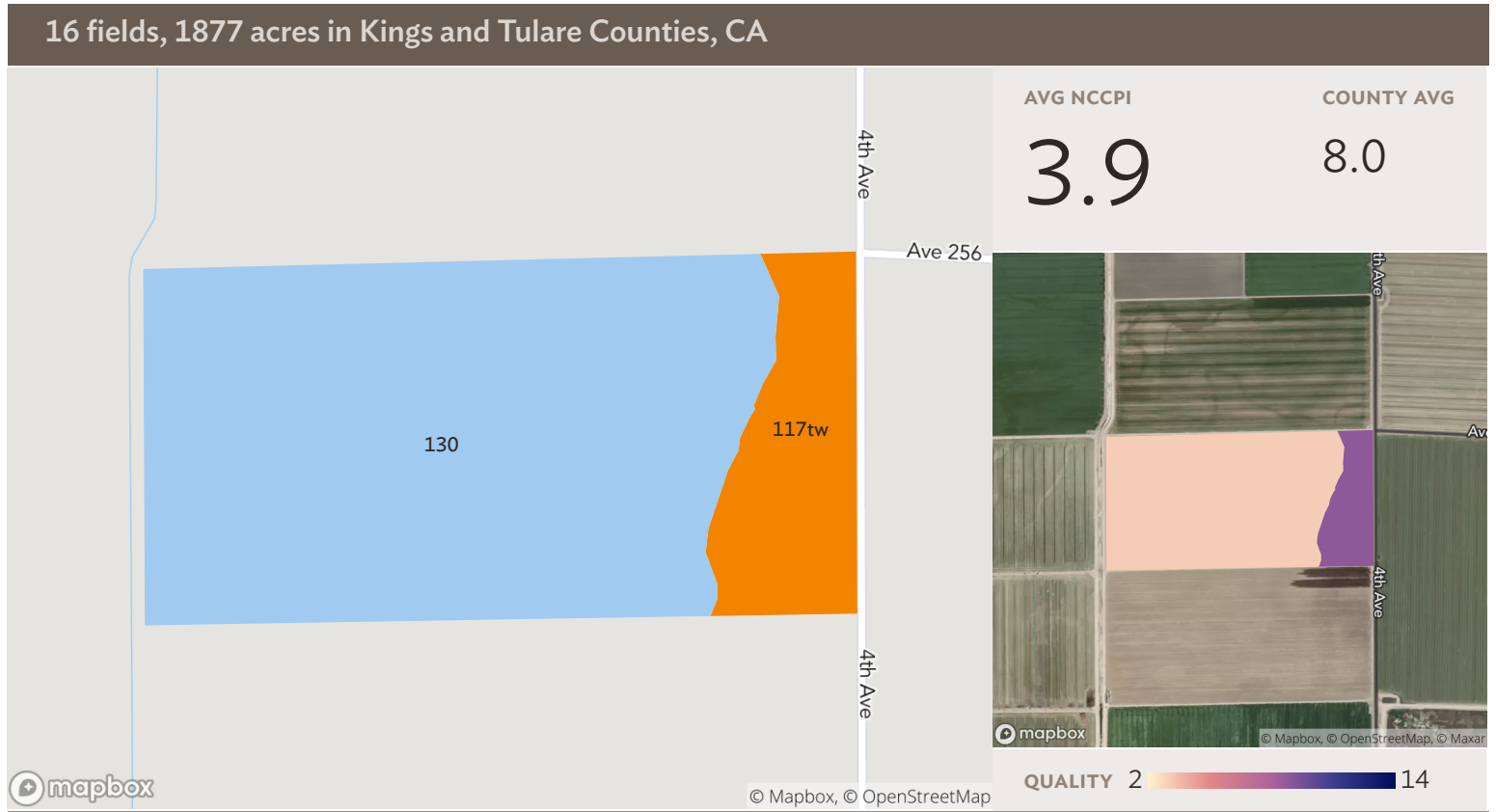


Source: NRCS Soil Survey

Field 5

206 ac

SOIL CODE	SOIL DESCRIPTION	ACRES	PERCENTAGE OF FIELD	SOIL CLASS	NCCPI
130	Kimberlina fine sandy loam, saline-alkali	163.93	79.4%	7	3.0
113	Garces loam	40.67	19.7%	7	3.5
117tw	Gambogy loam, drained, 0 to 1 percent slopes	1.86	0.9%	4	8.8
206.46					3.2

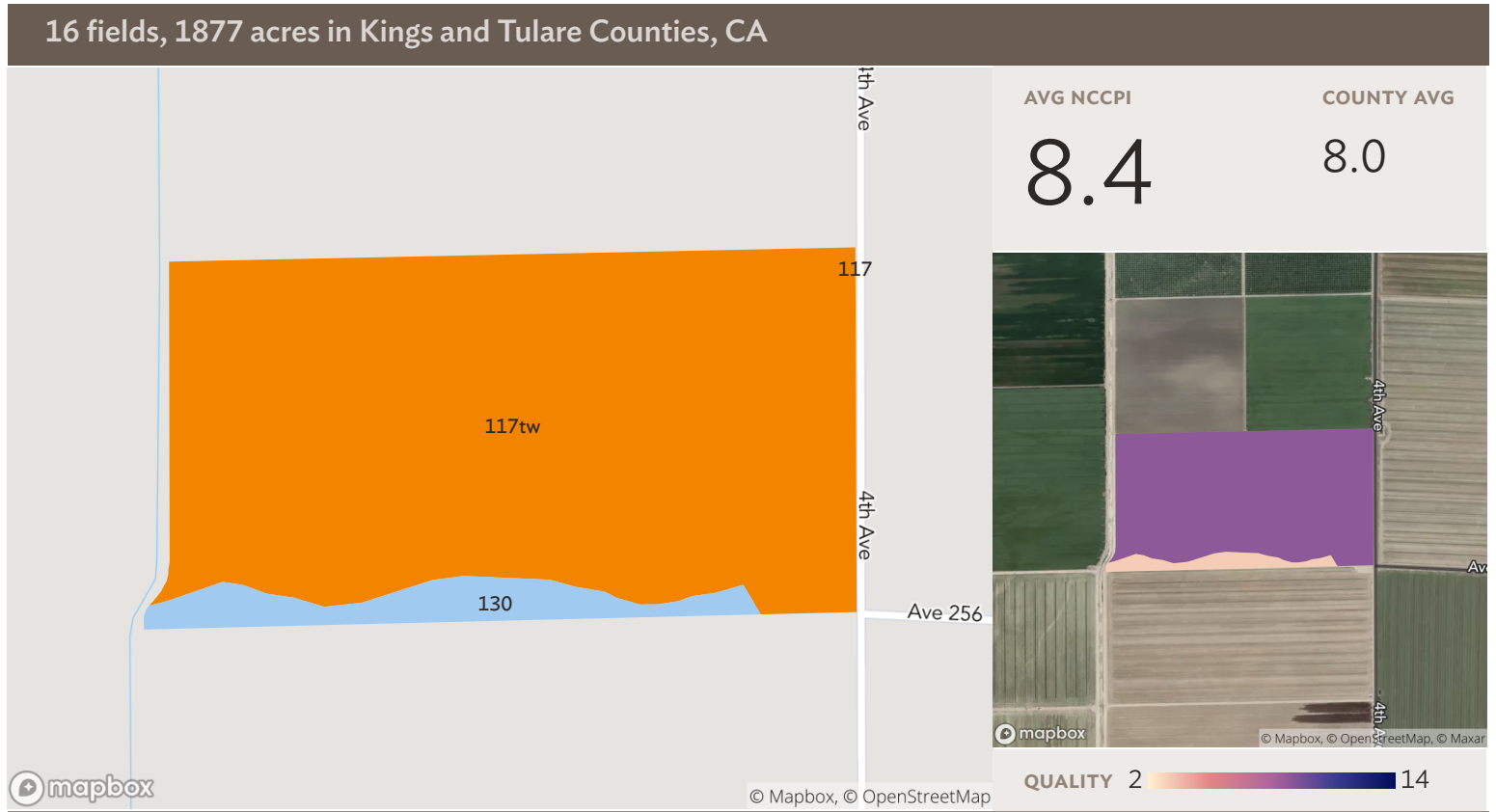


Source: NRCS Soil Survey

Field 6

80 ac

SOIL CODE	SOIL DESCRIPTION	ACRES	PERCENTAGE OF FIELD	SOIL CLASS	NCCPI
■ 130	Kimberlina fine sandy loam, saline-alkali	66.92	84.0%	7	3.0
■ 117tw	Gambogy loam, drained, 0 to 1 percent slopes	12.79	16.0%	4	8.8
		79.72			3.9

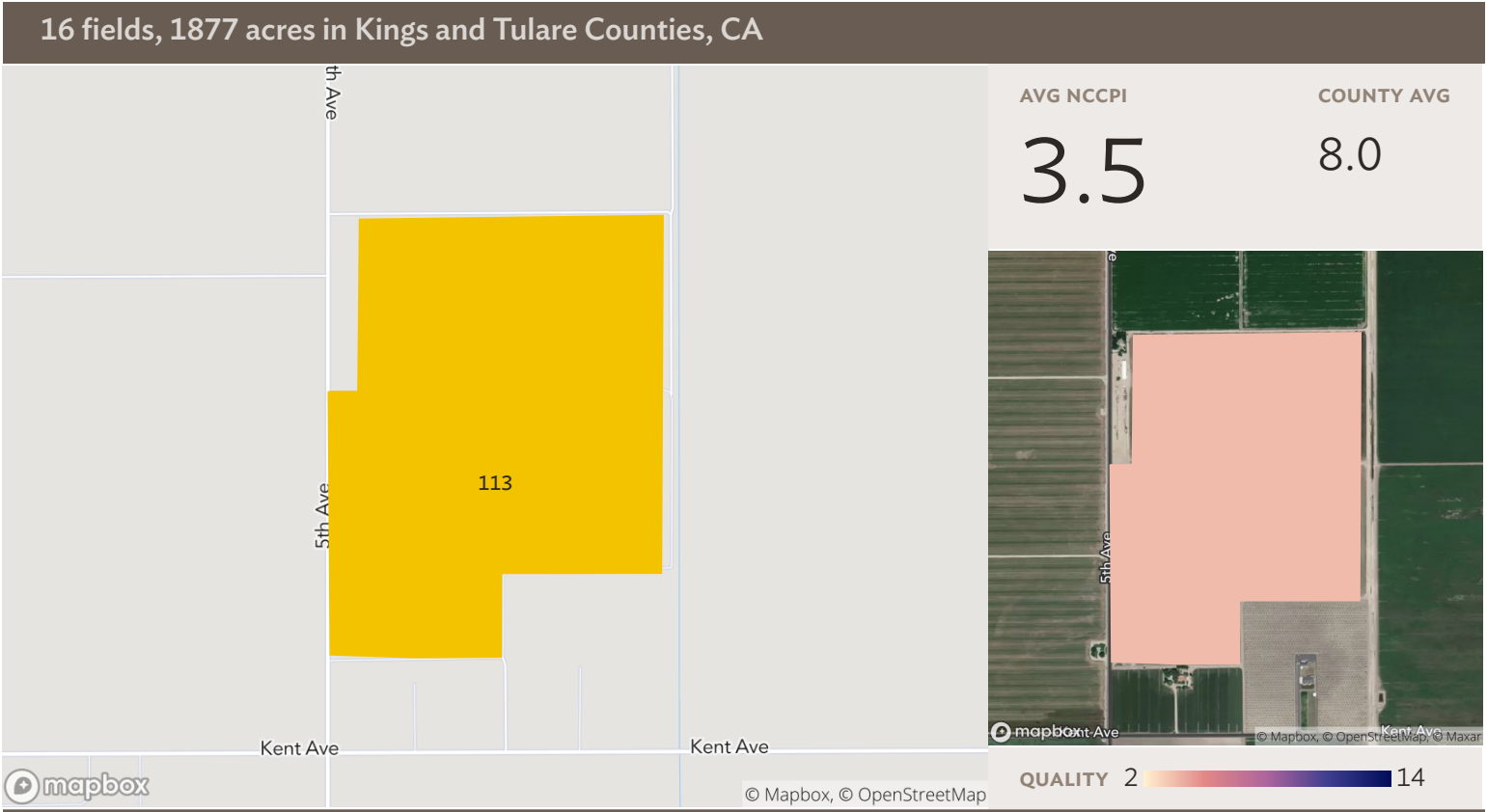


Field 7

Source: NRCS Soil Survey

78 ac

SOIL CODE	SOIL DESCRIPTION	ACRES	PERCENTAGE OF FIELD	SOIL CLASS	NCCPI
117tw	Gambogy loam, drained, 0 to 1 percent slopes	72.68	92.6%	4	8.8
130	Kimberlina fine sandy loam, saline-alkali	5.82	7.4%	7	3.0
117	Gambogy loam, drained, 0 to 1 percent slopes	0.00	0.0%	4	8.8
78.50					8.4

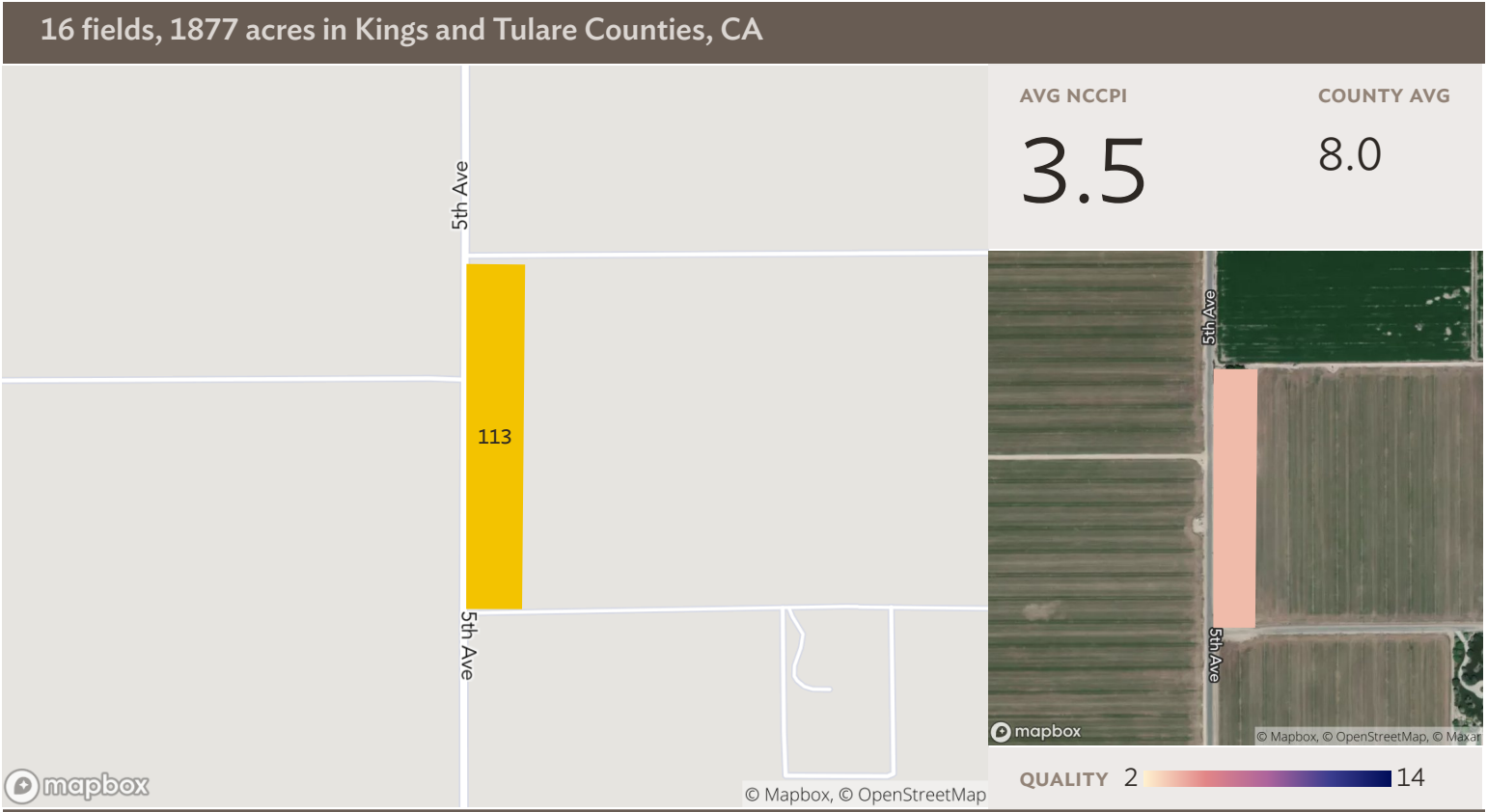


Source: NRCS Soil Survey

Field 8

161 ac

SOIL CODE	SOIL DESCRIPTION	ACRES	PERCENTAGE OF FIELD	SOIL CLASS	NCCPI
113	Garces loam	160.51	100.0%	7	3.5
160.51					3.5

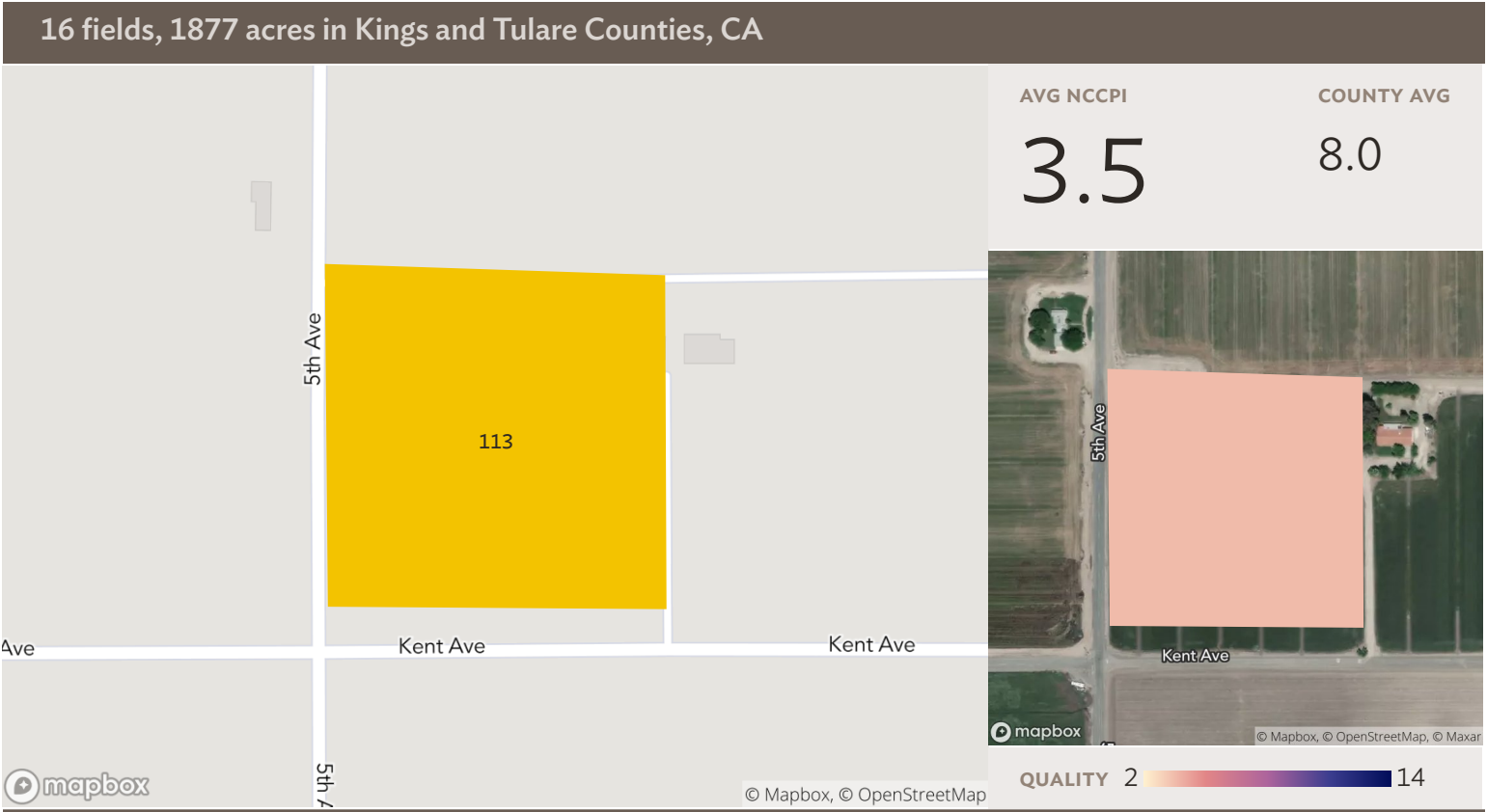


Field 9

Source: NRCS Soil Survey

6 ac

SOIL CODE	SOIL DESCRIPTION	ACRES	PERCENTAGE OF FIELD	SOIL CLASS	NCCPI
113	Garces loam	6.15	100.0%	7	3.5
		6.15			3.5



Field 10

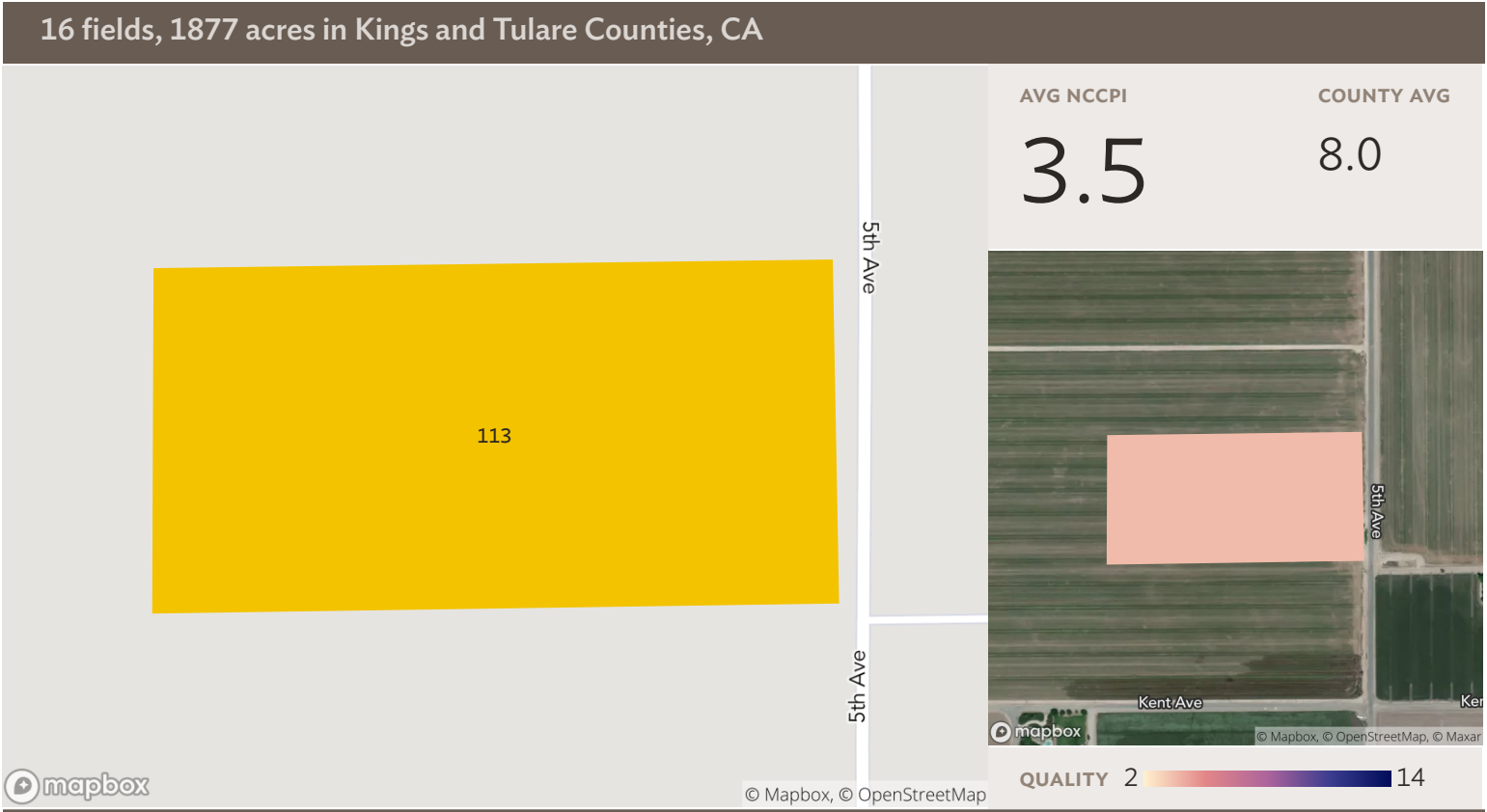
Source: NRCS Soil Survey

9 ac

SOIL CODE	SOIL DESCRIPTION	ACRES	PERCENTAGE OF FIELD	SOIL CLASS	NCCPI
113	Garces loam	8.94	100.0%	7	3.5
8.94					3.5



	SOIL CODE	SOIL DESCRIPTION	ACRES	PERCENTAGE OF FIELD	SOIL CLASS	NCCPI
	113	Garces loam	9.10	100.0%	7	3.5
			9.10			3.5

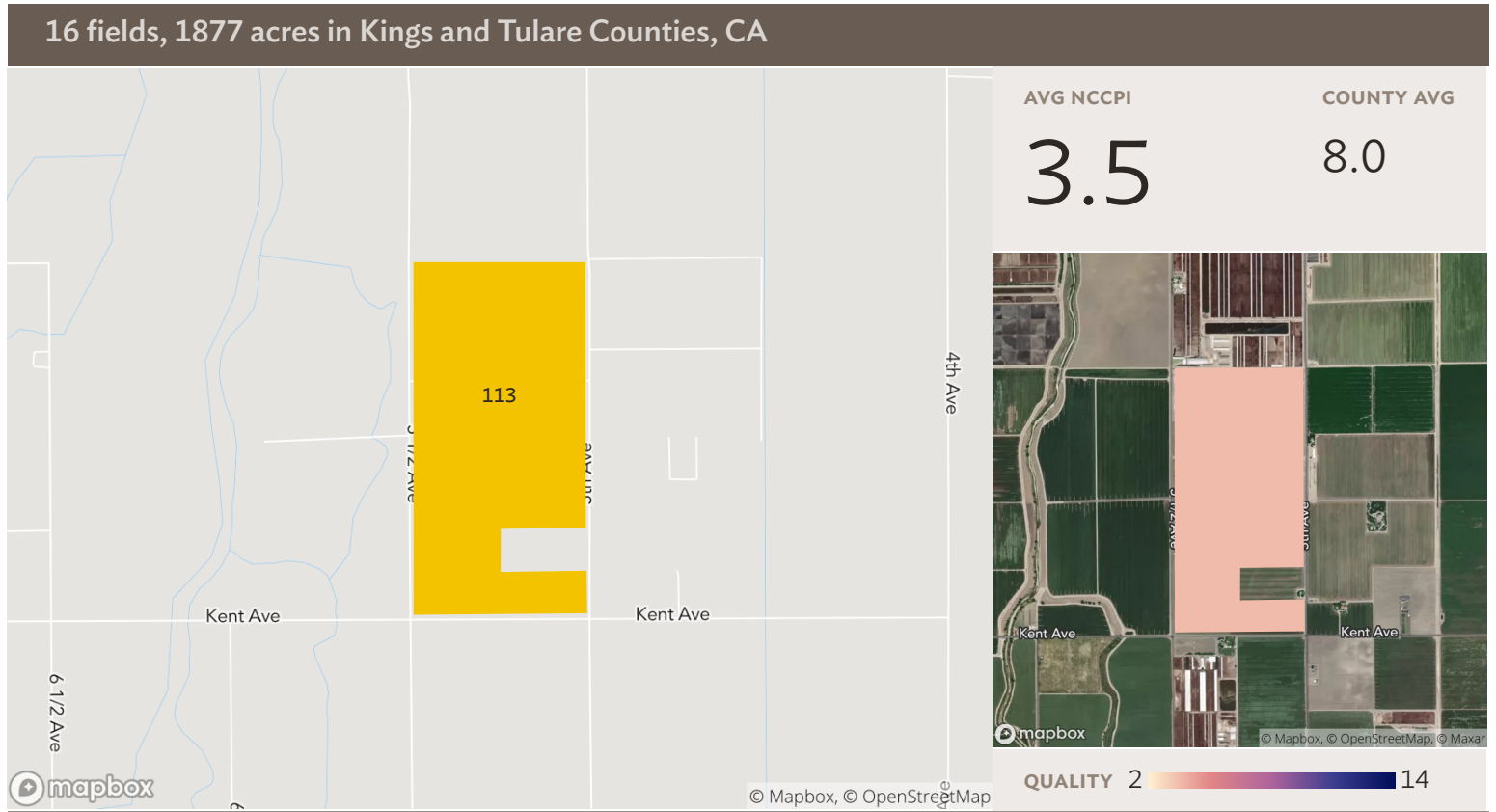


Field 12

Source: NRCS Soil Survey

18 ac

SOIL CODE	SOIL DESCRIPTION	ACRES	PERCENTAGE OF FIELD	SOIL CLASS	NCCPI
113	Garces loam	18.33	100.0%	7	3.5
18.33					3.5

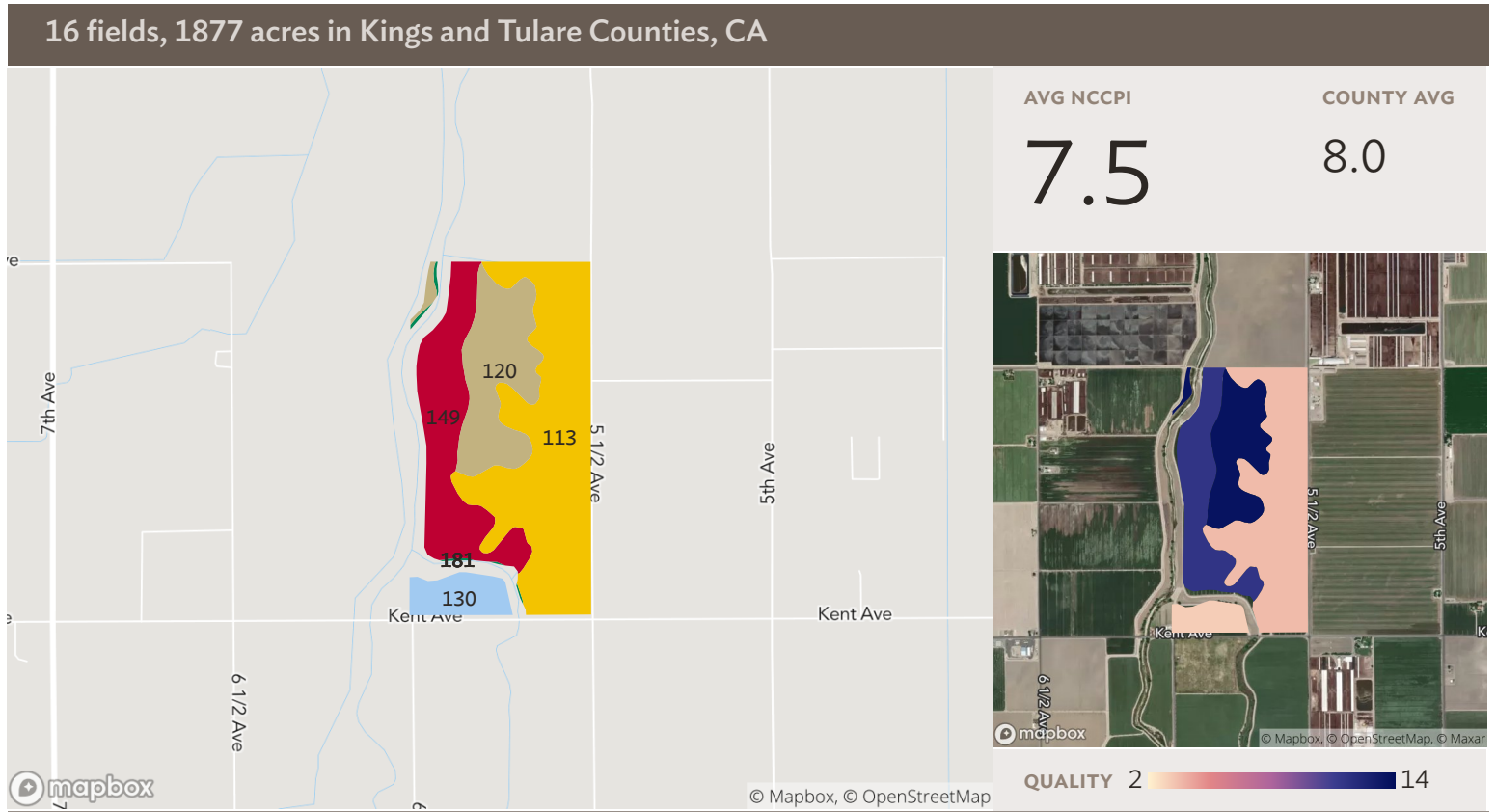


Field 13

Source: NRCS Soil Survey

284 ac

SOIL CODE	SOIL DESCRIPTION	ACRES	PERCENTAGE OF FIELD	SOIL CLASS	NCCPI
■ 113	Garces loam	283.88	100.0%	7	3.5
283.88					3.5

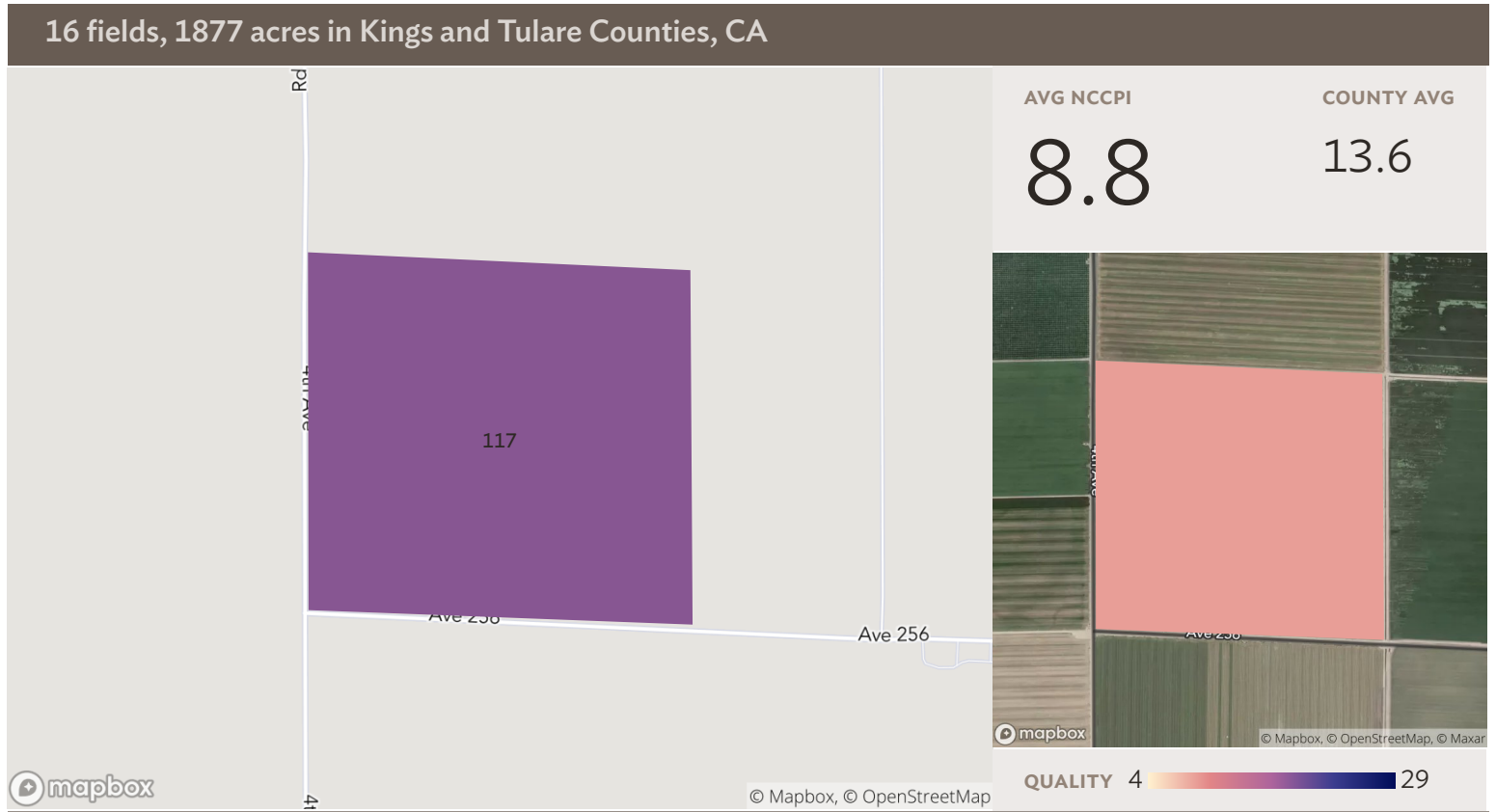


Field 14

Source: NRCS Soil Survey

283 ac

SOIL CODE	SOIL DESCRIPTION	ACRES	PERCENTAGE OF FIELD	SOIL CLASS	NCCPI
■ 113	Garces loam	135.92	48.0%	7	3.5
■ 149	Nord complex	67.18	23.7%	4	11.5
■ 120	Grangeville fine sandy loam, partially drained	59.96	21.2%	6	13.6
■ 130	Kimberlina fine sandy loam, saline-alkali	19.05	6.7%	7	3.0
■ 181	Water	1.33	0.5%	8	N/A
		282.11	99.5%		7.5



Field 15

Source: NRCS Soil Survey

170 ac

SOIL CODE	SOIL DESCRIPTION	ACRES	PERCENTAGE OF FIELD	SOIL CLASS	NCCPI
■ 117	Gambogy loam, drained, 0 to 1 percent slopes	169.94	100.0%	4	8.8
169.94					8.8

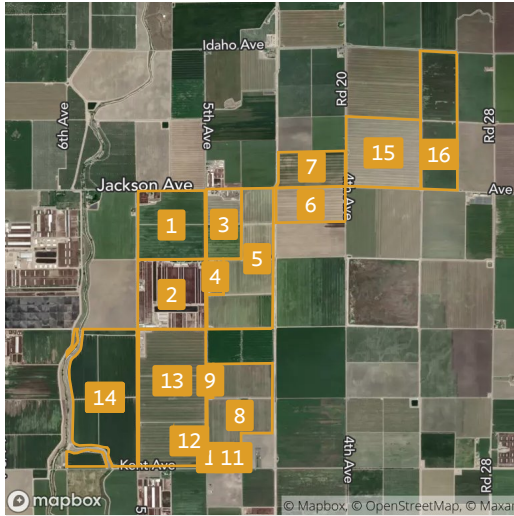


Field 16

Source: NRCS Soil Survey

166 ac

SOIL CODE	SOIL DESCRIPTION	ACRES	PERCENTAGE OF FIELD	SOIL CLASS	NCCPI
■ 117	Gambogy loam, drained, 0 to 1 percent slopes	153.31	92.4%	4	8.8
■ 108	Colpien loam, 0 to 2 percent slopes	11.65	7.0%	4	14.2
■ 117tw	Gambogy loam, drained, 0 to 1 percent slopes	0.93	0.6%	4	8.8
		165.89			9.2

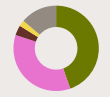
16 fields, 1877 acres in Kings and Tulare Counties, CA

All fields

1877 ac


2019

2018

2017

2016

2015

■ Double Crop

56.1%

54.1%

60.3%

39.5%

44.7%

■ Alfalfa

30.0%

26.3%

26.5%

37.5%

35.4%

■ Fallow

2.6%

5.2%

0.8%

3.4%

3.8%

■ Corn

0.1%

5.2%

–

4.3%

2.3%

■ Other

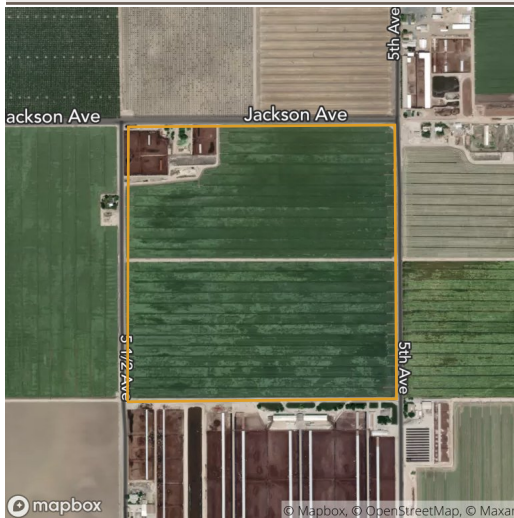
11.2%

9.1%

12.4%

15.4%

13.9%


Field 1

151 ac


2019

2018

2017

2016

2015

■ Double Crop

90.5%

89.6%

90.6%

0.1%

–

■ Alfalfa

0.3%

0.5%

0.5%

89.4%

88.1%

■ Other

9.2%

9.9%

8.8%

10.5%

11.9%

16 fields, 1877 acres in Kings and Tulare Counties, CA



Field 2

155 ac


2019

2018

2017

2016

2015

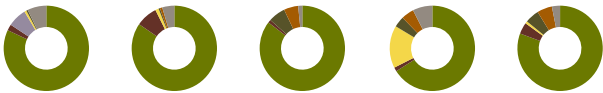
Fallow	21.7%	41.7%	7.2%	28.5%	29.6%
Grass/Pasture	17.5%	21.8%	21.9%	21.8%	21.8%
Non-Cropland	25.8%	3.2%	3.7%	3.0%	3.1%
Crop Undetermined	6.8%	18.8%	0.6%	0.1%	0.1%
Pistachios	0.7%	0.9%	31.2%	24.4%	21.3%
Developed	10.1%	0.6%	0.7%	0.8%	0.6%
Winter Wheat	4.8%	5.7%	-	0.2%	2.4%
Almonds	0.8%	1.4%	14.8%	10.3%	10.4%
Pomegranates	5.1%	0.4%	1.4%	0.4%	0.1%
Double Crop	0.3%	2.9%	8.4%	-	-
Walnuts	2.1%	-	1.4%	7.1%	5.4%
Barley	1.4%	-	7.3%	-	1.7%
Other	2.8%	2.7%	1.5%	3.5%	3.4%

16 fields, 1877 acres in Kings and Tulare Counties, CA



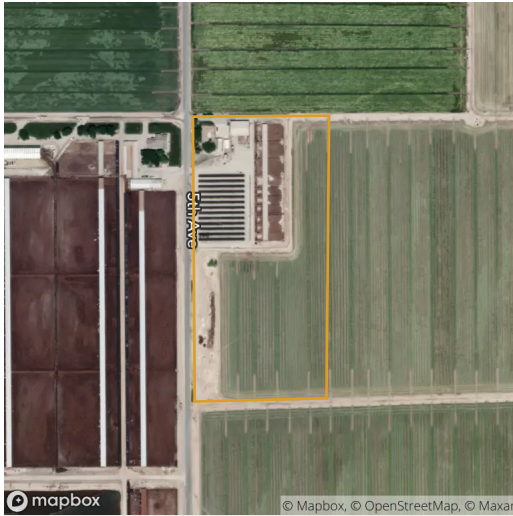
Field 3

80 ac



	2019	2018	2017	2016	2015
Double Crop	82.0%	84.6%	85.4%	66.0%	80.6%
Fallow	2.3%	8.2%	1.2%	1.5%	4.3%
Non-Cropland	7.1%	-	-	-	-
Corn	0.8%	1.3%	-	16.1%	0.9%
Pistachios	0.6%	0.6%	6.5%	4.1%	5.3%
Almonds	-	0.9%	5.4%	4.8%	5.7%
Other	7.2%	4.6%	1.6%	7.5%	3.1%

16 fields, 1877 acres in Kings and Tulare Counties, CA



Field 4

20 ac



2019



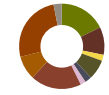
2018



2017



2016



2015

■ Double Crop	52.4%	21.1%	53.9%	41.1%	17.7%
■ Developed	18.4%	–	–	–	–
■ Fallow	5.7%	17.4%	3.4%	13.0%	10.5%
■ Corn	0.8%	31.8%	–	1.0%	2.3%
■ Non-Cropland	11.7%	–	0.1%	–	–
■ Pistachios	0.4%	1.5%	27.3%	23.3%	7.6%
■ Crop Undetermined	1.1%	16.1%	4.3%	–	2.6%
■ Cotton	2.3%	9.6%	–	4.8%	2.0%
■ Walnuts	2.3%	–	2.3%	7.5%	19.3%
■ Almonds	–	2.5%	8.8%	4.5%	9.0%
■ Winter Wheat	2.6%	–	–	0.9%	25.8%
■ Other	2.3%	0.1%	–	3.8%	3.1%

16 fields, 1877 acres in Kings and Tulare Counties, CA


Field 5

206 ac


2019 2018 2017 2016 2015

■ Double Crop	94.3%	53.9%	96.5%	76.4%	76.3%
■ Corn	0.3%	37.1%	0.1%	–	2.3%
■ Cotton	0.2%	7.3%	–	2.4%	1.4%
■ Winter Wheat	2.7%	–	0.1%	–	11.9%
■ Triticale	–	–	–	12.1%	0.1%
■ Other	2.5%	1.8%	3.3%	9.2%	8.1%



Field 6

80 ac

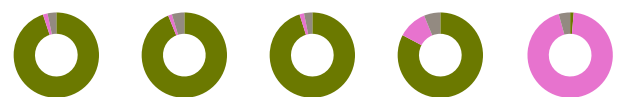

2019 2018 2017 2016 2015

■ Alfalfa	96.3%	94.0%	94.6%	95.6%	2.9%
■ Double Crop	0.5%	1.0%	0.8%	–	70.5%
■ Corn	–	0.3%	–	–	16.2%
■ Other	3.2%	4.6%	4.6%	4.4%	10.4%



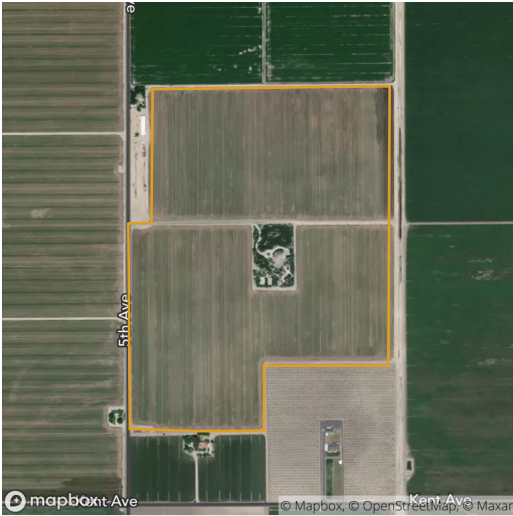
Field 7

78 ac


2019 2018 2017 2016 2015

■ Double Crop	94.9%	93.8%	95.2%	82.7%	1.3%
■ Alfalfa	1.7%	1.5%	1.7%	11.1%	94.3%
■ Other	3.3%	4.7%	3.1%	6.2%	4.3%

16 fields, 1877 acres in Kings and Tulare Counties, CA



Field 8

161 ac



2019



2018



2017



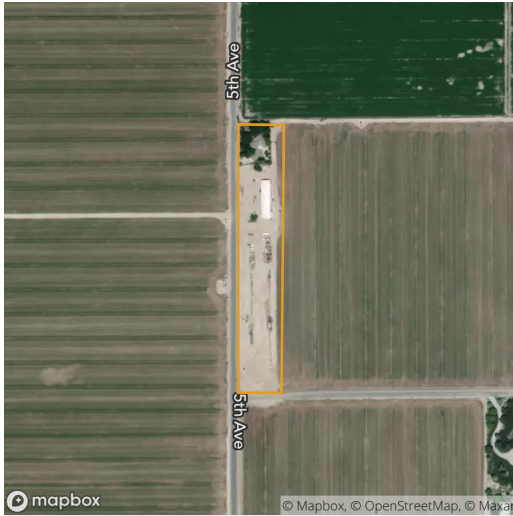
2016



2015

Alfalfa	95.7%	95.3%	95.6%	2.7%	2.3%
Double Crop	0.1%	0.4%	0.3%	78.7%	87.8%
Corn	–	0.3%	–	10.2%	2.0%
Other	4.3%	4.0%	4.0%	8.4%	7.9%

16 fields, 1877 acres in Kings and Tulare Counties, CA



Field 9

6 ac



2019



2018



2017



2016



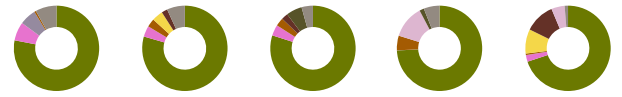
2015

Alfalfa	19.1%	19.1%	19.1%	1.5%	8.1%
Fallow	14.5%	27.3%	–	23.9%	41.6%
Barley	7.2%	–	44.0%	–	–
Double Crop	7.2%	15.2%	–	11.8%	5.0%
Pistachios	3.6%	3.6%	26.1%	14.7%	7.0%
Almonds	3.6%	4.2%	10.6%	30.5%	15.2%
Developed	13.1%	–	–	–	–
Non-Cropland	11.9%	0.1%	0.1%	0.1%	0.1%
Crop Undetermined	2.4%	16.0%	–	–	1.7%
Sorghum	9.6%	–	–	–	–
Winter Wheat	7.1%	–	–	–	13.3%
Cotton	–	14.5%	–	3.5%	–
Walnuts	0.5%	–	–	8.6%	3.6%
Other	–	–	–	5.4%	4.4%

16 fields, 1877 acres in Kings and Tulare Counties, CA


Field 10

9 ac

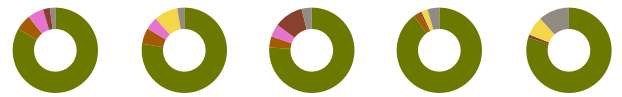

2019 2018 2017 2016 2015

Double Crop	78.0%	79.5%	79.9%	74.2%	69.9%
Alfalfa	7.1%	4.1%	4.1%	–	2.5%
Non-Cropland	6.2%	0.1%	0.1%	0.1%	0.1%
Almonds	0.7%	3.1%	3.1%	5.5%	0.6%
Corn	–	4.2%	–	–	9.2%
Fallow	–	2.2%	2.5%	–	11.4%
Cotton	–	–	–	12.5%	5.0%
Pistachios	–	–	6.0%	1.7%	–
Other	8.0%	6.8%	4.3%	6.0%	1.3%

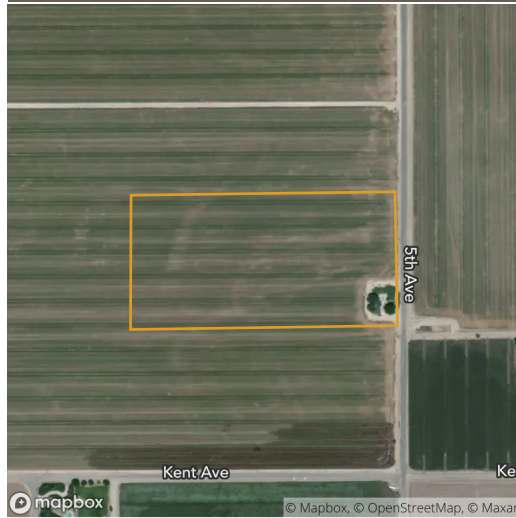


Field 11

9 ac


2019 2018 2017 2016 2015

Double Crop	83.3%	77.4%	76.1%	89.8%	79.8%
Almonds	6.0%	6.0%	4.2%	2.4%	–
Alfalfa	6.0%	4.8%	4.8%	–	–
Walnuts	2.6%	–	11.0%	0.8%	1.2%
Corn	–	9.1%	–	2.4%	7.3%
Other	2.0%	2.7%	3.9%	4.5%	11.7%

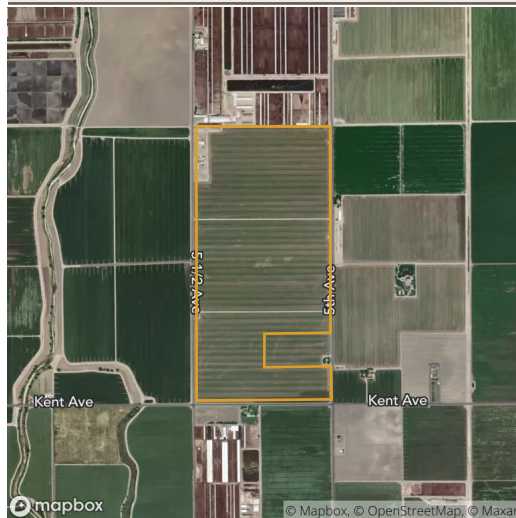
16 fields, 1877 acres in Kings and Tulare Counties, CA


Field 12

18 ac



	2019	2018	2017	2016	2015
Alfalfa	97.8%	1.2%	1.4%	8.2%	95.0%
Double Crop	–	94.0%	94.0%	69.0%	–
Corn	–	–	–	9.7%	–
Cotton	–	–	–	7.1%	–
Other	2.2%	4.8%	4.6%	6.0%	5.0%

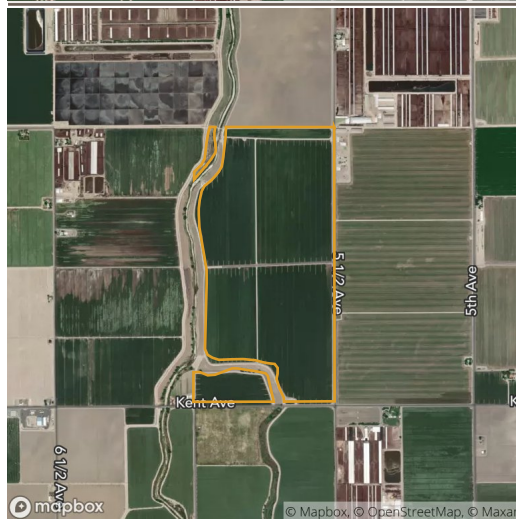


Field 13

284 ac

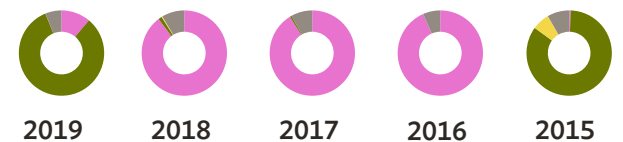


	2019	2018	2017	2016	2015
Alfalfa	95.1%	0.3%	0.4%	18.1%	95.0%
Double Crop	0.1%	92.8%	94.5%	70.0%	–
Other	4.9%	6.9%	5.0%	11.9%	5.0%



Field 14

283 ac



	2019	2018	2017	2016	2015
Alfalfa	11.1%	89.7%	91.2%	93.4%	0.6%
Double Crop	82.7%	1.4%	0.6%	–	84.5%
Corn	–	0.3%	–	–	6.6%
Other	6.2%	8.6%	8.1%	6.6%	8.3%

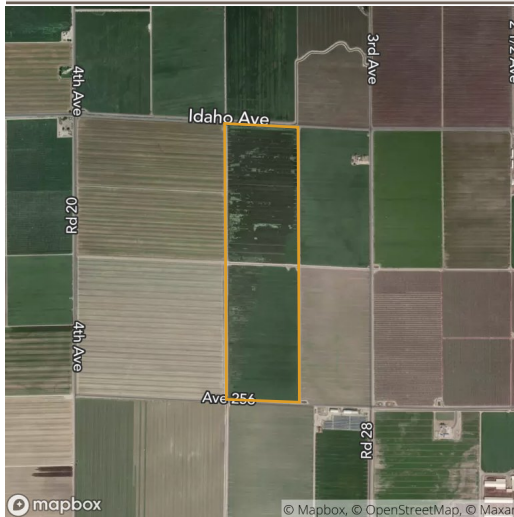
16 fields, 1877 acres in Kings and Tulare Counties, CA


Field 15

170 ac

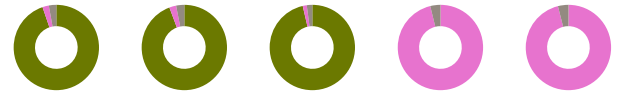

2019 2018 2017 2016 2015

■ Double Crop	95.9%	95.0%	98.1%	61.3%	94.9%
■ Corn	–	1.7%	–	24.6%	0.1%
■ Cotton	0.1%	1.8%	–	8.6%	0.1%
■ Other	4.0%	1.5%	1.9%	5.5%	4.8%



Field 16

166 ac


2019 2018 2017 2016 2015

■ Double Crop	94.8%	94.3%	96.4%	0.1%	0.1%
■ Alfalfa	2.4%	2.6%	1.5%	96.1%	96.0%
■ Other	2.8%	3.1%	2.1%	3.8%	4.0%

Source: NASS Cropland Data Layer