

Source: NRCS Soil Survey

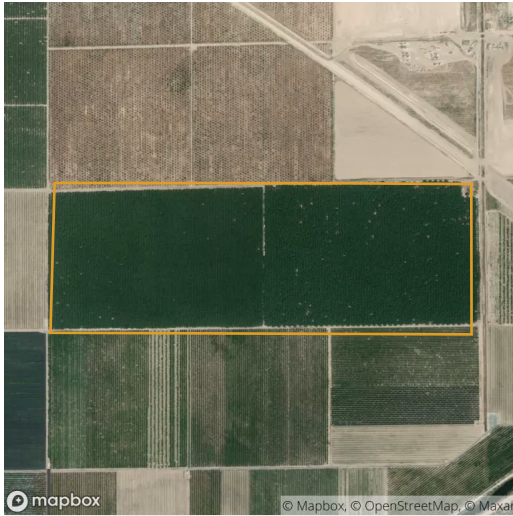
All fields

129 ac

SOIL CODE	SOIL DESCRIPTION	ACRES	PERCENTAGE OF FIELD	SOIL CLASS	NCCPI
■ Ed	El Peco fine sandy loam	89.49	69.3%	4	1.9
■ Pa	Pachappa loam	21.27	16.5%	4	19.7
■ Pc	Pachappa loam, saline alkali	18.12	14.0%	4	7.1
■ Hsr	Hesperia fine sandy loam	0.17	0.1%	4	15.7
129.05					5.6

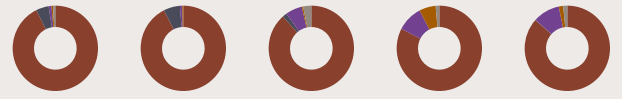
1 field, 129 acres in Fresno County, CA

TOWNSHIP/SECTION 17S 21E - 12, 13



All fields

129 ac




	2019	2018	2017	2016	2015
Walnuts	92.6%	92.5%	88.4%	82.6%	86.5%
Crop Undetermined	4.8%	6.2%	1.6%	-	0.1%
Grapes	1.1%	0.9%	6.3%	9.8%	10.1%
Almonds	0.6%	0.4%	0.5%	6.3%	1.7%
Other	0.9%	-	3.1%	1.4%	1.6%

Source: NASS Cropland Data Layer

1 field, 129 acres in Fresno County, CA

TOWNSHIP/SECTION 17S 21E - 12, 13

Fresno County, CA

FIELD	ACRES	LOCATION	OWNER (LAST UPDATED)
	129.05	17S 21E - 12, 13 APN: 05608011S	N/A (11/04/2020)

