



RIB-ARROW REALTY INC.
AG LAND • DAIRY
RESIDENTIAL • COMMERCIAL SALES

PRICE REDUCED!
Lemoore Dairy Facility
52 +/- ACRES
Asking Price \$1,050,000

- Description:** Dairy Facility with two homes located in Lemoore California. Property sits on 52+/- acres on two parcels. Older dairy facility and three working wells.
- Houses:** One older home and one home in good condition.
- Water & Irrigation:** The Property has three working wells and has access to Lemoore Canal water.
- SGMA:** The Sustainable Groundwater Management Act passed in 2014 requires groundwater basins be sustainable by 2040 and requires Groundwater Sustainability Plans (GSP) by 2020. GSPs may limit the amount of well water pumped. For more information go to <https://water.ca.gov/Programs/Groundwater-Management/SGMA-Groundwater-Management>

MAX RIBEIRO

President/Broker

max@ribarrowrealtyinc.com

Phone: (559) 381-1035

License: 01760906

DOUG WISECARVER

Real Estate Agent

doug@ribarrowrealtyinc.com

Phone: (559) 250-3334

DRE: 02208945

JOSEPH BREWER

Real Estate Agent

joseph@ribarrowrealtyinc.com

Phone: (559) 670-8685

DRE: 02057539

THE INFORMATION PROVIDED WAS OBTAINED FROM SOURCES DEMMED RELIABLE, HOWEVER, IT IS NOT GUARANTEED TO BE CORRECT BY THE SELLER OR RIB-ARROW REALTY INC. OR ITS AGENTS. ALL INTERESTED PARTIES ARE ADVISED TO DO THEIR OWN INVESTIGATIONS AND SHOULD NOT RELY ON THE INFORMATION PROVIDED.

Max Ribeiro
+1 559-381-1035

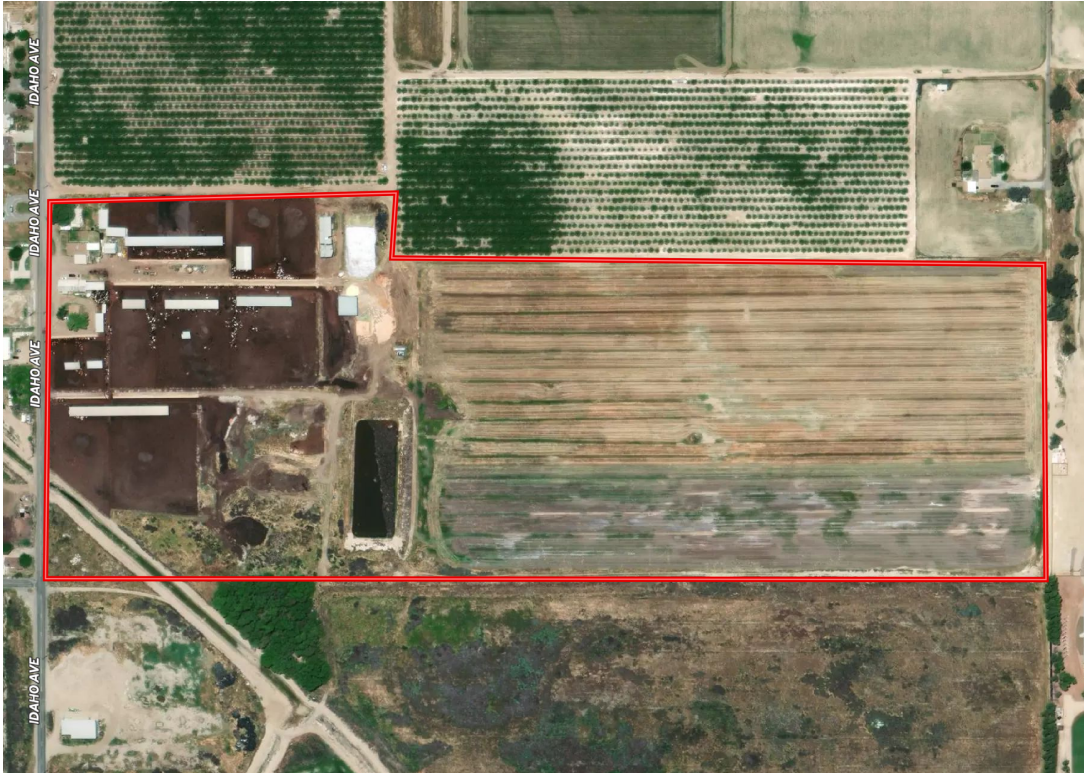
1200 W. Grangeville Blvd.
Hanford, CA 93230

max@ribarrowrealtyinc.com
www.ribarrowrealtyinc.com



RIB-ARROW REALTY INC.
AG LAND • DAIRY
RESIDENTIAL • COMMERCIAL SALES

PRICE REDUCED!
Lemoore Dairy Facility!
Asking Price: \$1,050,000



52 +/- acre Dairy Facility with two homes on two parcels!
Property has three working wells and access to Lemoore Canal Irrigation water!

MAX RIBEIRO

President/Broker

max@ribarrowrealtyinc.com

Phone: (559) 381-1035

License: 01760906

DOUG WISECARVER

Real Estate Agent

doug@ribarrowrealtyinc.com

Phone: (559) 250-3334

DRE: 02208945

JOSEPH BREWER

Real Estate Agent

joseph@ribarrowrealtyinc.com

Phone: (559) 670-8685

DRE: 02057539

THE INFORMATION PROVIDED WAS OBTAINED FROM SOURCES DEMMED RELIABLE, HOWEVER, IT IS NOT GUARANTEED TO BE CORRECT BY THE SELLER OR RIB-ARROW REALTY INC. OR ITS AGENTS. ALL INTERESTED PARTIES ARE ADVISED TO DO THEIR OWN INVESTIGATIONS AND SHOULD NOT RELY ON THE INFORMATION PROVIDED.

Max Ribeiro
+1 559-381-1035

1200 W. Grangeville Blvd.
Hanford, CA 93230

max@ribarrowrealtyinc.com
www.ribarrowrealtyinc.com