



RIB-ARROW REALTY INC.
AG LAND · DAIRY
RESIDENTIAL · COMMERCIAL SALES

Packing House & Orchards Turn Key Operation!

332 +/- ACRES

**Call Blake or Max for
Asking Price!**

- Description:** 332 +/- total acres on three parcels with orchards, turn key opportunity packing house, owned solar, and second source of water.
- Crops:** Cherries and stone fruit all high desired varieties, hot varieties all planted within 15 years.
- Water & Irrigation:** Property has good wells, lined pond basin and is located in Peoples Ditch District with lift pumps on the Kings River. Micro sprinklers & flood with OWNED SOLAR!
- SGMA:** The Sustainable Groundwater Management Act passed in 2014 requires groundwater basins be sustainable by 2040 and requires Groundwater Sustainability Plans (GSP) by 2020. GSPs may limit the amount of well water pumped. For more information go to <https://water.ca.gov/Programs/Groundwater-Management/SGMA-Groundwater-Management>

MAX RIBEIRO

President/Broker

Email: max@ribarrowrealtyinc.com

Phone: (559) 381-1035

License: 01760906

BLAKE GRILIONE

Real Estate Agent

Email: blake@ribarrowrealtyinc.com

Phone: (559) 772-5593

DRE: 02203298

THE INFORMATION PROVIDED WAS OBTAINED FROM SOURCES DEMMED RELIABLE, HOWEVER, IT IS NOT GUARANTEED TO BE CORRECT BY THE SELLER OR RIB-ARROW REALTY INC. OR ITS AGENTS. ALL INTERESTED PARTIES ARE ADVISED TO DO THEIR OWN INVESTIGATIONS AND SHOULD NOT RELY ON THE INFORMATION PROVIDED.

Blake Grilione
+1 559-772-5593

1200 W. Grangeville Blvd.
Hanford, CA 93230

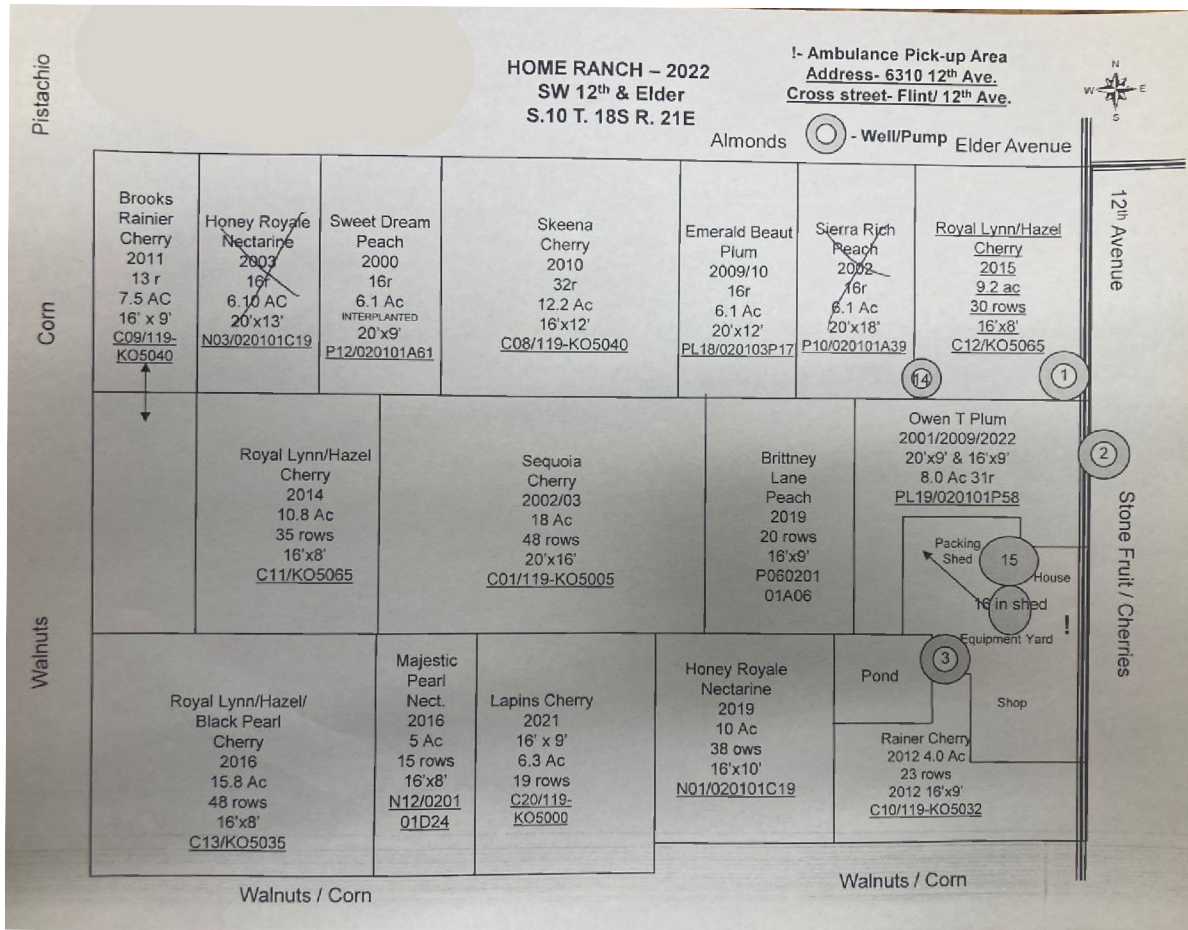
blake@ribarrowrealtyinc.com
www.ribarrowrealtyinc.com



RIB-ARROW REALTY INC.
AG LAND • DAIRY
RESIDENTIAL • COMMERCIAL SALES

Packing House & Orchards Turn Key Operation!

**Call Blake or Max for
 Asking Price!**



332 +/- acres of cherries and stone fruit, includes turn key packing house and equipment!

MAX RIBEIRO
 President/Broker

Email: ribarow@unwiredbb.com
 Phone: (559) 381-1035
 License: 01760906

BLAKE GRILIONE
 Real Estate Agent

Email: blake@ribarrowrealtyinc.com
 Phone: (559) 772-5593
 DRE: 02203298

THE INFORMATION PROVIDED WAS OBTAINED FROM SOURCES DEMMED RELIABLE, HOWEVER, IT IS NOT GUARANTEED TO BE CORRECT BY THE SELLER OR RIB-ARROW REALTY INC. OR ITS AGENTS. ALL INTERESTED PARTIES ARE ADVISED TO DO THEIR OWN INVESTIGATIONS AND SHOULD NOT RELY ON THE INFORMATION PROVIDED.

Max Ribeiro
 +1 559-381-1035

1200 W. Grangeville Blvd.
 Hanford, CA 93230

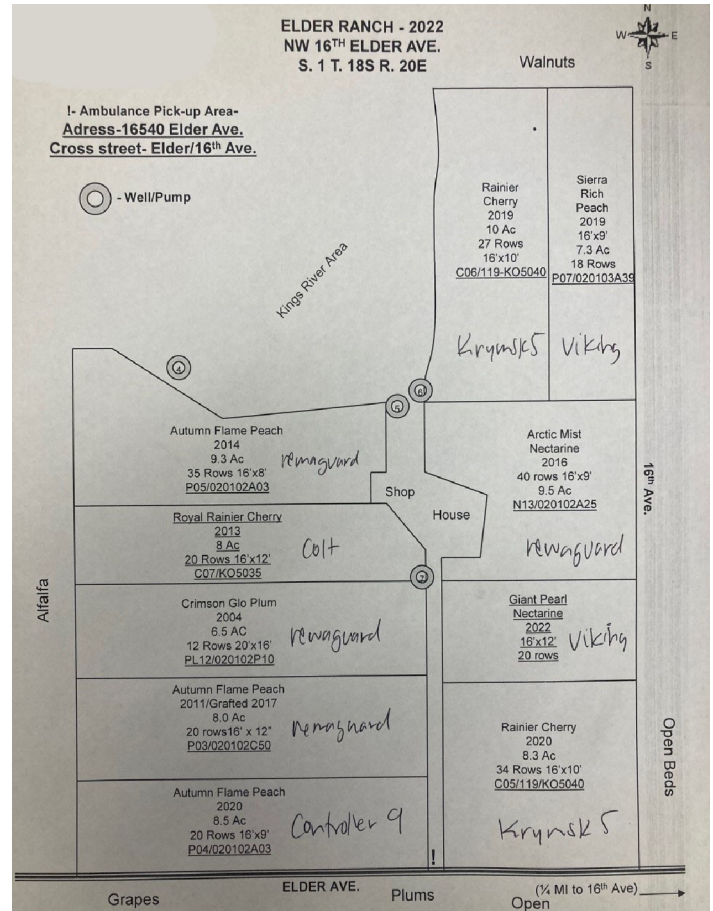
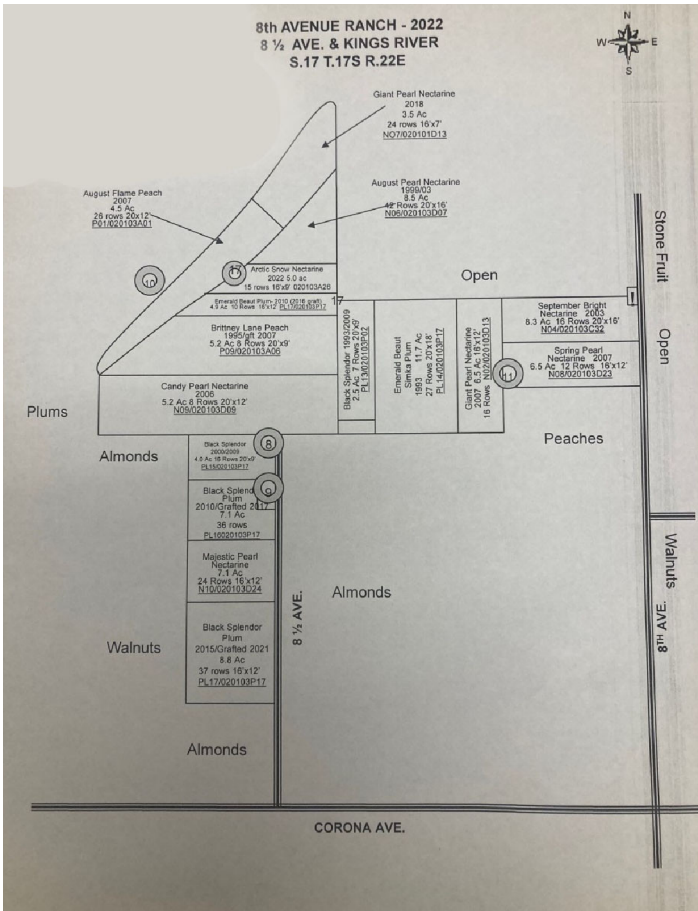
ribarow@unwiredbb.com
www.ribarrowrealtyinc.com



RIB-ARROW REALTY INC.
AG LAND • DAIRY
RESIDENTIAL • COMMERCIAL SALES

Packing House & Orchards Turn Key Operation!

**Call Blake or Max for
 Asking Price!**



332 +/- acres of cherries and stone fruit, includes turn key packing house and equipment!

MAX RIBEIRO
 President/Broker
 Email: ribarow@unwiredbb.com
 Phone: (559) 381-1035
 License: 01760906

BLAKE GRILIONE
 Real Estate Agent
 Email: blake@ribarrowrealtyinc.com
 Phone: (559) 772-5593
 DRE: 02203298

THE INFORMATION PROVIDED WAS OBTAINED FROM SOURCES DEMMED RELIABLE, HOWEVER, IT IS NOT GUARANTEED TO BE CORRECT BY THE SELLER OR RIB-ARROW REALTY INC. OR ITS AGENTS. ALL INTERESTED PARTIES ARE ADVISED TO DO THEIR OWN INVESTIGATIONS AND SHOULD NOT RELY ON THE INFORMATION PROVIDED.

Max Ribeiro
 +1 559-381-1035

1200 W. Grangeville Blvd.
 Hanford, CA 93230

ribarow@unwiredbb.com
www.ribarrowrealtyinc.com