



**RIB-ARROW REALTY INC.**

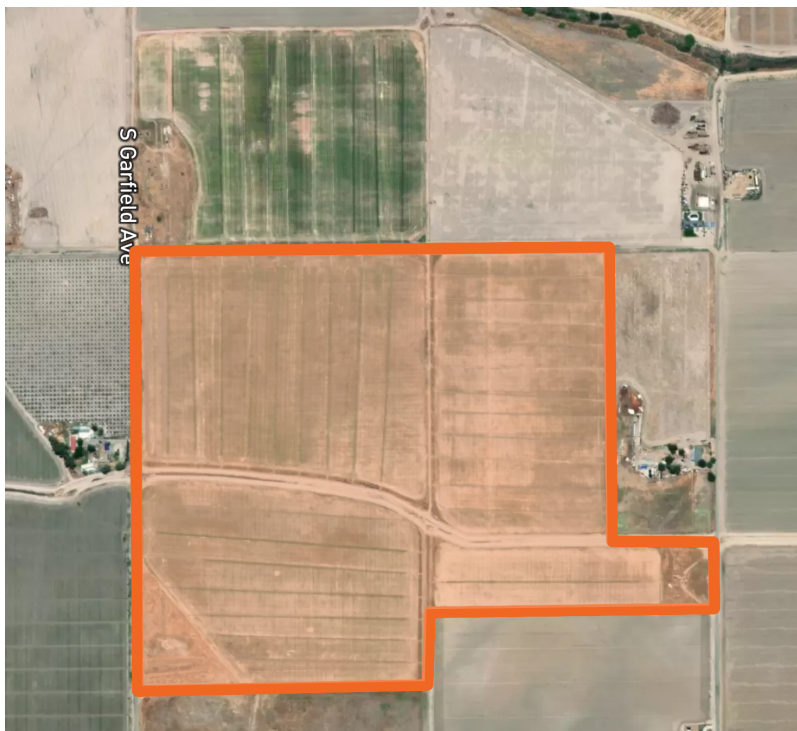
**AG LAND • DAIRY**

**RESIDENTIAL • COMMERCIAL SALES**

## **Riverdale Area Open Farm Ground**

**92.25 +/- ACRES**

**Asking Price \$1,383,750.00**



**Located near Riverdale CA**

**MAX RIBEIRO**

*President/Broker*

Email: [max@ribarrowrealtyinc.com](mailto:max@ribarrowrealtyinc.com)

Phone: (559) 381-1035 • License: 01760906

**DOUG WISECARVER**

*Real Estate Agent*

Email: [doug@ribarrowrealtyinc.com](mailto:doug@ribarrowrealtyinc.com)

Phone: (559) 250-3334 • DRE: 02208945

**JOSEPH BREWER**

*Real Estate Agent*

Email: [joseph@ribarrowrealtyinc.com](mailto:joseph@ribarrowrealtyinc.com)

Phone: (559) 670-8685 • DRE: 02057539

**APRIL VALADAO**

*Real Estate Agent*

Email: [april@ribarrowrealtyinc.com](mailto:april@ribarrowrealtyinc.com)

Phone: (559) 972-6925 • DRE: 02068200

THE INFORMATION PROVIDED WAS OBTAINED FROM SOURCES DEMMED RELIABLE, HOWEVER, IT IS NOT GUARANTEED TO BE CORRECT BY THE SELLER OR RIB-ARROW REALTY INC. OR ITS AGENTS. ALL INTERESTED PARTIES ARE ADVISED TO DO THEIR OWN INVESTIGATIONS AND SHOULD NOT RELY ON THE INFORMATION PROVIDED.

---

Max Ribeiro

+1 559-381-1035

1200 W. Grangeville Blvd.

Hanford, CA 93230

[max@ribarrowrealtyinc.com](mailto:max@ribarrowrealtyinc.com)

[www.ribarrowrealtyinc.com](http://www.ribarrowrealtyinc.com)