

Your Business's Annual Health Check

An objective diagnosis of your company's
core strengths and hidden risks.

AN INSTANT MSME DIAGNOSTIC HEALTH CHECK

Do you have a clear view of your business's health?



Is your growth consistent, or are you experiencing unpredictable fluctuations?



Is your cashflow robust enough to handle pressure, or are you constantly feeling strained?



Is your debt a strategic tool for growth, or a source of underlying financial stress?



Are you a market leader, or are you vulnerable to competitive threats?



Is your business built on robust systems, or is it overly dependent on a few key people?

Uncertainty hinders decisions and blocks opportunities. It's time for a diagnosis.

Introducing the PURVEXA™ Instant MSME Diagnostic Health Check

A decision-grade preview of your business's health, delivered in minutes.

Our proprietary diagnostic tool analyses your business across five critical pillars, giving you an objective, data-driven snapshot of your current condition.

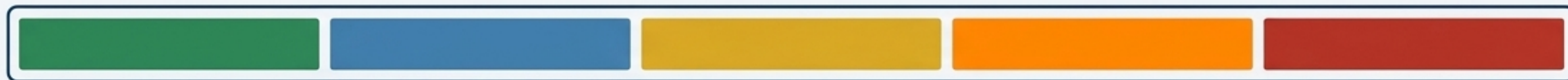
Powered by the *GSA Framework*



THE EXAMINATION: ASSESSING YOUR FIVE VITAL SIGNS

Vital Sign 1: Revenue Stability & Growth Momentum

We measure the strength and consistency of your company's financial pulse.



Healthy

Consistent growth & strong order pipeline

Stable

Moderate growth, predictable revenues

Concern

Flat or inconsistent growth

Stressed

Declining revenues

Critical

Severe revenue stress

Vital Sign 2: Profitability & Cashflow Discipline

We assess your business's ability to breathe – generating and managing cash effectively.



Healthy

Healthy margins
& surplus cash

Stable

Profitable but
cash tight

Concern

Break-even

Stressed

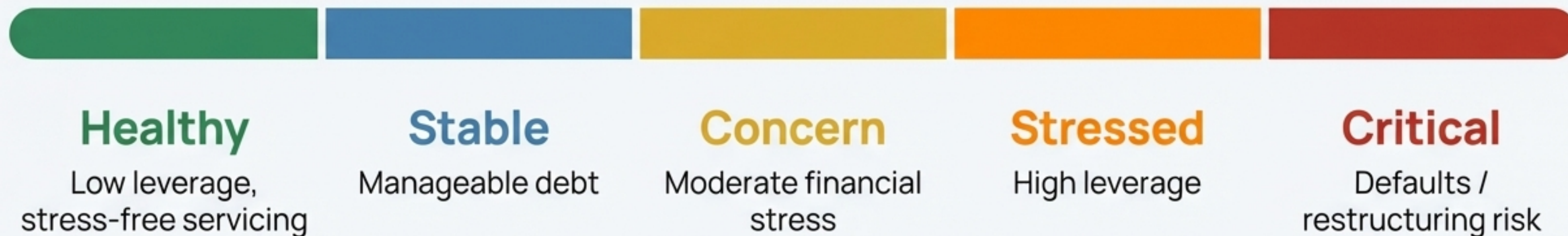
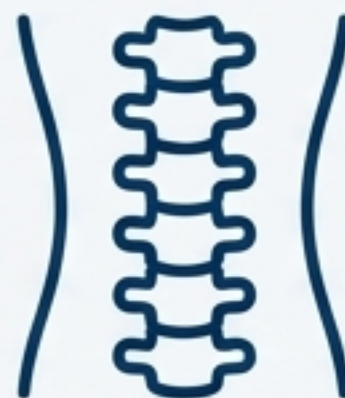
Low margins,
cash pressure

Critical

Loss-making &
cash stressed

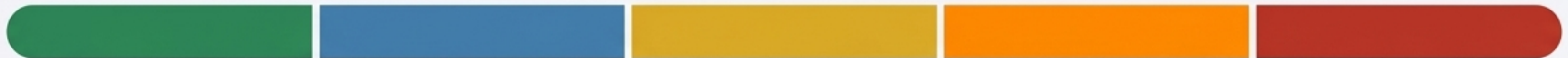
Vital Sign 3: Debt Load & Financial Risk

We examine the structural integrity of your finances and your resilience to stress.



Vital Sign 4: Market Position & Business Synergies

We evaluate your business's immune system – its brand strength and defensive capabilities.



Healthy

Strong brand,
alliances & repeat
clients

Stable

Some partnerships
& positioning

Concern

Standalone
business

Stressed

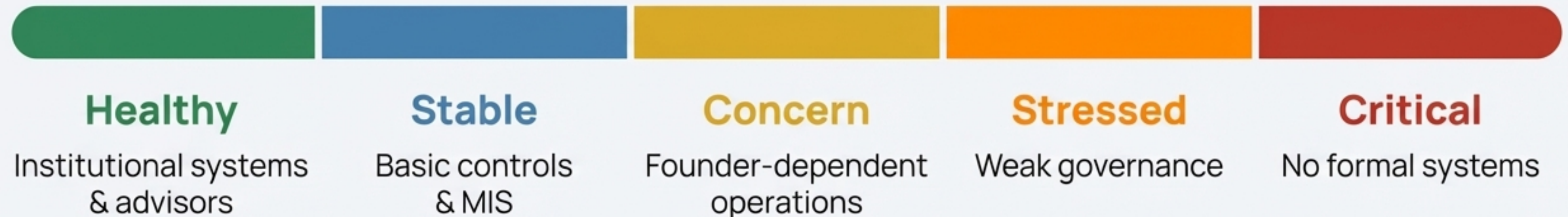
Weak market
positioning

Critical

Highly vulnerable
to competition

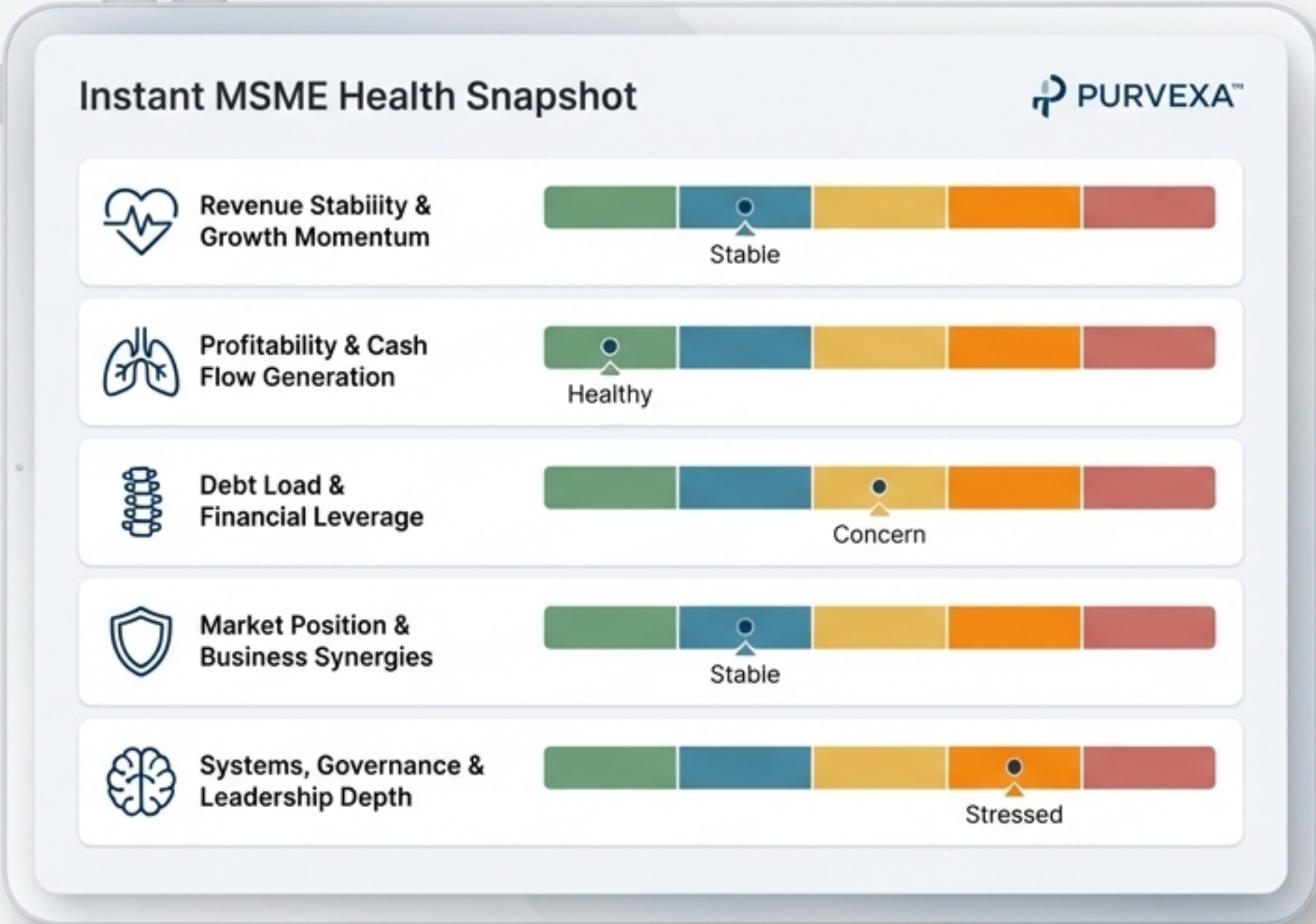
Vital Sign 5: Systems, Governance & Leadership Depth

We assess your business's central nervous system – its operational controls and decision-making structures.



Your Initial Results: The Instant MSME Health Snapshot

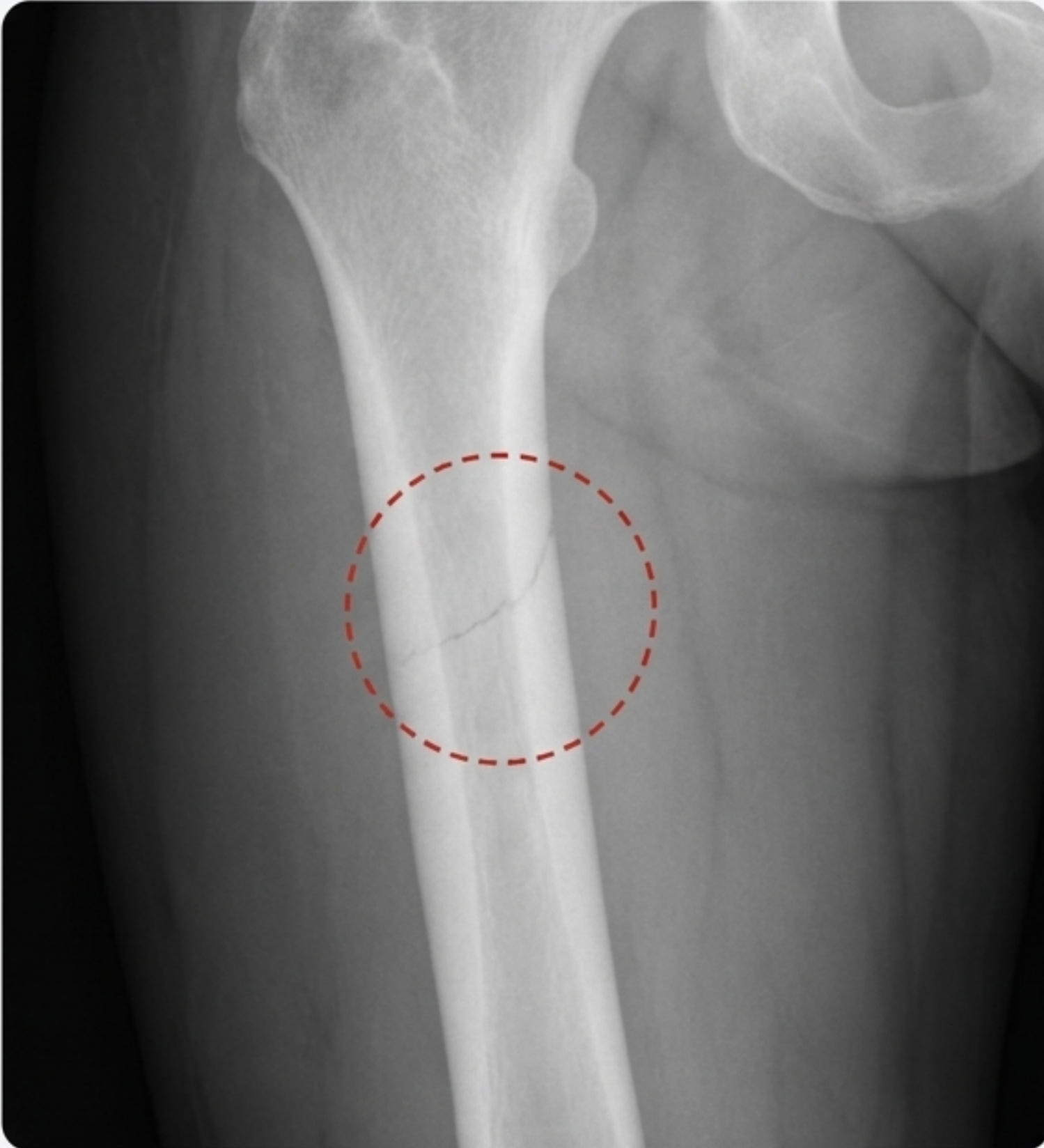
Within minutes of completing the diagnostic, you receive a clear, at-a-glance summary of your business's health across all five vital signs. This snapshot helps you instantly identify areas of strength and potential vulnerability.



This is a Preview Diagnostic. It Tells You **Where** to Look.

The Instant Health Snapshot is like an X-ray. It's an essential first step that quickly identifies potential fractures, stress points, or areas of concern. It gives you immediate focus.

However, to understand the root cause and formulate a comprehensive treatment plan, you need to move beyond the initial image and consult a specialist.



The Full Consultation: Achieve Banker- & Investor-Ready Clarity

The next step is the PURVEXA MSME Growth & Risk Score™. This is our comprehensive deep-dive analysis.

We go beyond the snapshot to provide:

- ✓ In-depth analysis of root causes.
- ✓ Actionable recommendations for improvement.
- ✓ A robust, credible score that demonstrates your business's health to banks and investors.

Move from diagnosis to a clear plan for growth and resilience.

Ready for a Complete Diagnosis?

Take the definitive next step to secure your business's future health and unlock its growth potential.

BOOK YOUR FULL DIAGNOSTIC

 **ceo@purplepeople.in**

Or call: +91 82853 63960

PURVEXA™

A PURPLE PEOPLE INTERNATIONAL PLATFORM

Email: ceo@purplepeople.in

Phone: +91 82853 63960