

THE CALDERA TIMES

We  Island Park

Volume 2 Issue 7

www.TheCalderaTimes.com

July 2024 Edition

Inside This Edition

Crossword	Page 2
Toy Rental Companies	Page 5
Restaurant Hours	Page 8
Fishing Report	Page 10
Local Events	Page 15

Follow us on
Facebook



The Caldera Times
Island Park, Idaho

Read for free at:

www.TheCalderaTimes.com

Have an event coming up? Hiring? Know someone who should be highlighted? Want to write to the editor?
Jen@TheCalderaTimes.com 406.209.0022

Big Springs History

Big Springs is one of Island Parks gems. It is a first-magnitude spring that produces over 120 million gallons of water each day, and it is the primary source of water for Henrys Fork of the Snake River. It was designated a National Natural Landmark in August of 1980, but has had an interesting history before that.

Even in the early 1900's the spot attracted tourists traveling to Yellowstone Park. Many of the residents then, as now, enjoyed sharing the anomaly with friends and family. A.S. Trude, an early settler, became concerned the springs would be spoiled if not protected, so he worked to get it designated as part of the Forest Reserve in 1906.

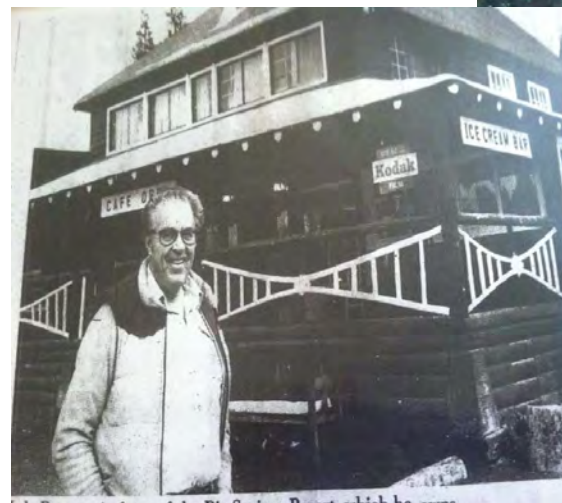
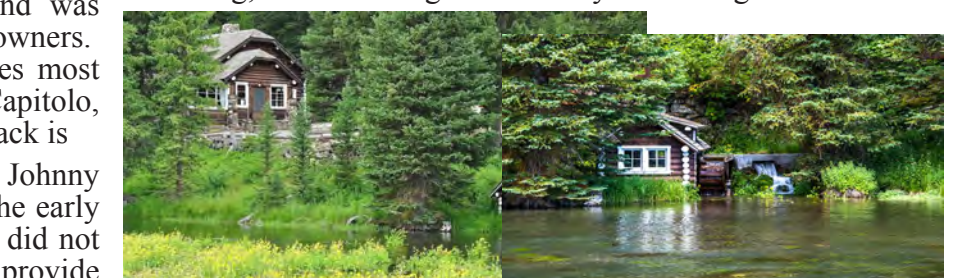
The designation did not keep the forest service from leasing portions of the ground around Big Springs. John and Margaret Kooch were some of the first to obtain one to build the Inn at Big Springs. The couple ran the Inn until 1920, when it changed hands for the first time. There were multiple owners and operators that tried to make their living at this picturesque location, but the last of them were Leon and Hal Petersen. During their management, in 1982, the Big Springs Inn burned to the ground and the lease reverted back to forest service. What remains today, is the parking lot still used by visitors.



The Johnny Sack cabin should have been removed at the end of the lease term, in 1979. Many supporters, in coordination with several government entities, found a way to restore the cabin place it on the National Register of Historic Places. The quality of workmanship can still be admired, and the custom design work by Johnny to accomodate his short stature is unusual and interesting.

The other building in the area was a Ranger station, which also burned and was not rebuilt.

If you haven't visited this site yet, you should put it on your list. Take time to feed the HUGE trout, watch the variety of birds that frequent the springs, and, if you choose, you can float from the Big Springs boat launch not far away. Please remember, the area nearest the springs is closed to fishing and swimming, but the hiking trails nearby are a delight!



In addition to the Inn, land was leased to summer home owners. While there are many names most of us no longer recognize, Capitolo, Rinetti, Molinelli, Johnny Sack is

the most famous and the cabin still remains on the banks of the springs. Johnny was from German descent and considered to be a master carpenter. In the early 1930's, he made the banks his full-time residence, despite that his lease did not allow for year around occupancy, and developed the water wheel to provide electricity for himself and his neighbors.

Coffee in the Park!

Have you ever witnessed an entrepreneurial family teach their children to have the same spirit? The desire to work for yourself has nothing to do with the tasks being easier or working fewer hours. Most self-employed people work longer and harder, but it's rewarding to watch your own business grow and become successful!

The Galbraith family is just such a family. Paige Galbraith just graduated from high school this year. At 18 years old, she is the epitome of her parents, who both work towards self-employment and independence.

Throughout high school she worked at a coffee shop in Utah. Her interactions with the regular clients and her team mates was so enjoyable. When her mother, Teara, pointed out the lack of coffee shops on the north side of Island Park, Paige decided it would be a fun opportunity.

The grand opening of Island Park Coffee near Connies and Sawtelle Mountain Resort happened just recently. The little food trailer she is working out of is in the park next to the Corndog vendor.

Summer hours will be 6 am to 2 pm weekdays, and 7 am to 1 pm on weekends. Some of the favorites you might choose are: Moose Mocha, a white chocolate



mocha with peanut butter and vanilla, either hot or cold; Old Faithful Frappe, a blended delight with almond, English toffee and vanilla, hot or cold; Glittery Lime Rickeys and Smore Lattes are also favorites.

They will be featuring some food items to go with your coffee fix as well! Burritos with bacon, sausage, or egg combined with potato and cheese and a acon, egg and

Continued on Page 3

Crosswords

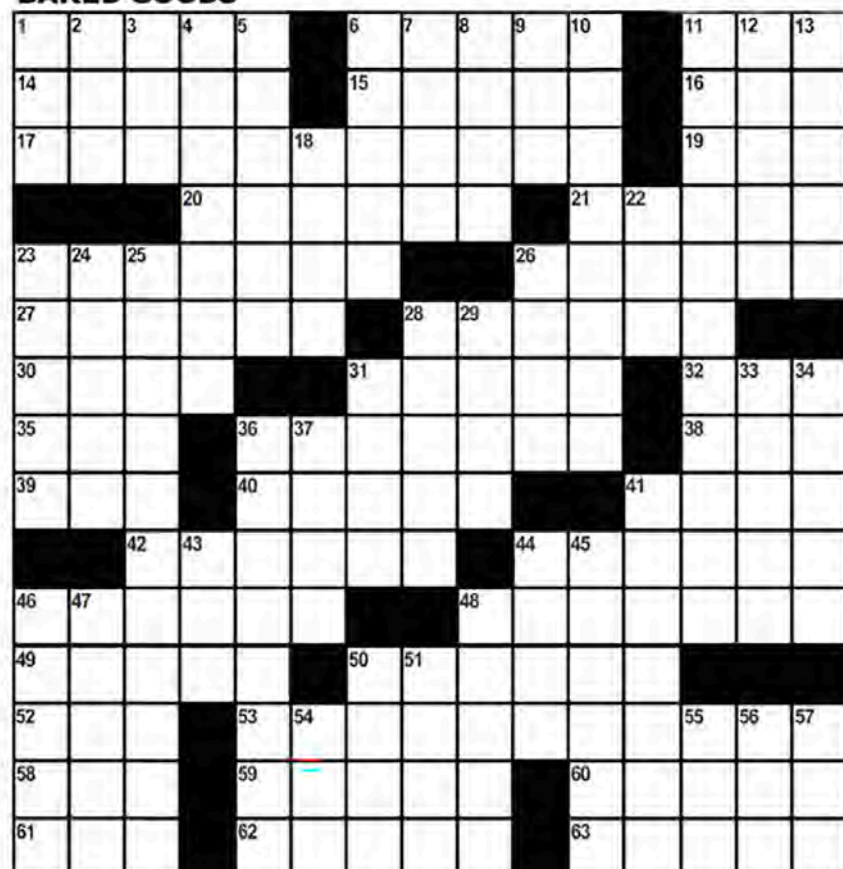
ACROSS

- | | |
|---------------------------------|----------------------------------|
| 1) Evening hour | 38) Commandment count |
| 6) Golden Horde member | 39) "___ luck?" |
| 11) Undergrad degs. | 40) Emphatic denial |
| 14) Candidate's concern | 41) Engine knock |
| 15) Make retribution | 42) Hindu princesses (Var.) |
| 16) Farthest or highest (Abbr.) | 44) Burden bearers |
| 17) Jumper's protectors | 46) Virtual-reality pinch hitter |
| 19) Prefix meaning "new" | 48) Home |
| 20) Software holders | 49) Rome's river |
| 21) Become part of history | 50) Add spice to |
| 23) Leg bones | 52) Tennis court ploy |
| 26) Putting on airs | 53) Newborn, to parents |
| 27) Jewelers' aids | 58) Name among boxing legends |
| 28) Yellow fruit | 59) Adult |
| 30) Has the deed to | 60) Fast-growing vine |
| 31) Hulk in the ring | 61) Didn't strap-hang |
| 32) Scandinavian rug | 62) Flyboy's agreement |
| 35) Got ruined in the wash | 63) Assassinated |
| 36) Utterly unyielding | |

DOWN

- 1) Bro, for one
- 2) Australian runner
- 3) Delivery vehicle
- 4) Breakfast dishes?
- 5) It may be in a groove
- 6) Mexican meal items
- 7) Elementary particle
- 8) Craggy hills
- 9) "Go on ..."
- 10) Full, as a voice
- 11) Con man
- 12) Alaska native
- 13) Novel idea?
- 18) Important blocks of time
- 22) Coquettish
- 23) Fauna's partner
- 24) Dubuque resident, e.g.
- 25) Common hopper
- 26) Gap to bridge
- 28) Apples, e.g.
- 29) Biology lab supply
- 31) Possess
- 33) Gossipmonger
- 34) Apprehensive feeling
- 36) Michigan town
- 37) Big game
- 41) Like some realizations
- 43) Absorbed, as a cost
- 44) Statue part
- 45) Downloadable reading material
- 46) Book of maps
- 47) Kind of concerto
- 48) Relatively robust
- 50) Negotiation problem
- 51) Narrowly defeat (with "out")
- 54) Alien craft
- 55) Kind of approval
- 56) Action film weapon
- 57) Mother Teresa, for one

BAKED GOODS



- **Local Agents**
- **Local Office**
- **Best Results**

Call
for your
FREE
Market
Analysis
on your
cabin
or
lots



Rod JONES

THE DIFFERENCE BETWEEN LISTED & **SOLD**

(208) 313-0000

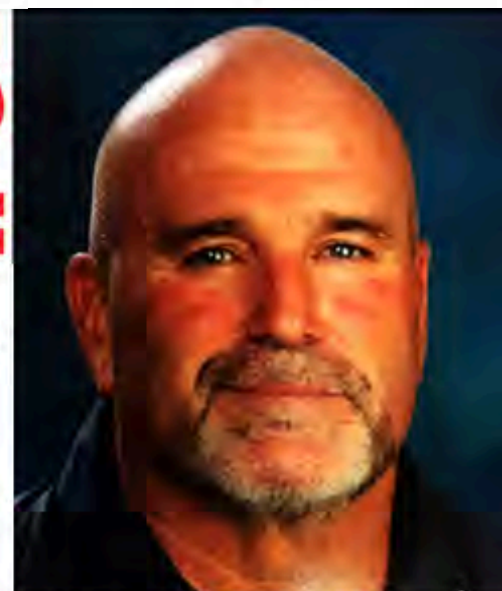
EVERYTHING we touch turns to **SOLD!!**

IDAHO'S REAL ESTATE

Find the Best Cabins & Lots
At

www.IdahosRealEstate.net

Want yours sold?
Call us!



"Idahos' **Jewell**"

(208) 241-7769

Yellowstone's Rangers

By Lori Nuss

This month's article is to highlight one of Yellowstone's female rangers, Patti Murphree. Patti is retired from the National Park Service and has unique Yellowstone history.

"I began my NPS days in Delaware Water Gap in 1984 as a boat ranger. My dream job was Yellowstone. So in 1985 I took a campground LE job at Madison campground in YNP. A road patrol ranger transferred to the comm center and they bumped me to road patrol within a few weeks. From 1985 to 2015, I was a YNP LE ranger. Worked most seasons at OF and Grant, with several at Canyon, Lake, and 2 at Madison. I was part of the CISM and victim advocate response for years. Science teacher during the winter and ranger in the summers, what a great combo for me. I was the person in charge of all emergency plans, training, and working with local LE and EMS for my school in Collierville TN, go Dragons. I met and worked with so many awesome people in YNP through the years. My last season with Yellowstone and NPS was as a general ranger at Lake, lot's of bear and bison jams."



Lori Nuss
The REAL Yellowstone©
406-581-0851
lorinuss@me.com
www.therealyellowstone.com

ISLAND PARK SOUVENIRS AND GIFTS
Island Park

Souvenirs & Gifts

unique and cherished keepsakes

1:00 PM - 8:00 PM THUR-SUN
Sometimes we open earlier

COME SAY HELLO!

DON'T MISS IT!

Island Park Souvenirs And Gifts

208-589-0503

LITTEST SHOP WITH THE BIGGEST HEART

ISLAND PARK SOUVENIRS AND GIFTS
3519 3/4 VALE-KILGORE

EVERYTHING AT

10% off

*BRING A PHOTO OF THIS WITH YOU FOR DISCOUNT

ISLAND PARK SOUVENIRS AND GIFTS

3519 3/4 Yale-Kilgore Shotgun

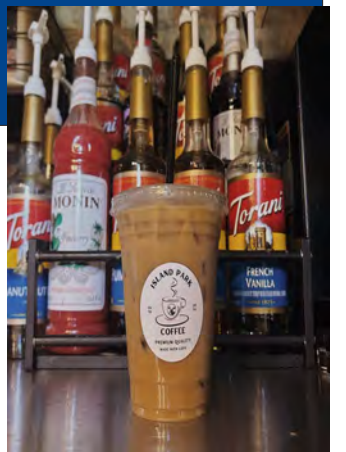
Coffee in the Park!

Continued from Page 1

cheddar croissant will pair nicely with any drink on the menu for a full breakfast. You could also choose to pair a chocolate and snickerdoodle cookie instead!

If coffee isn't your thing, try a fresh fruit smoothie, or a flavored lemonade, either strawberry or huckleberry. Paige would like to add Italian sodas in the near future as well.

The youth of our community are so special. Keep an eye out for the next huge leap of faith that comes from these great kids. In the meantime, support those that are already trying to make a living in our beautiful area.



ISLAND PARK

ESTD 2024

COFFEE

PREMIUM QUALITY
MADE WITH LOVE

Use this coupon to come see us!
Buy any drink on the menu
Get a second one 1/2 price

Located in the park near Sawtelle Resort off of Quakie Lane

MVC

McCLOUD SERVICES

Excavation - Plumbing - Utilities
Gravel - Roadbase

208-223-2382
flintmcccloudconstruction@gmail.com

Boating Season: Do's and Don'ts

Repeated for those visiting!!

For those of you who are visiting our piece of heaven, please help us preserve it by doing the same. Make sure your boat is clean of any parasites before launching, and be aware, that an invasive species sticker is required for ANY boat you are launching under 10 feet in length. This includes kayaks, paddleboards, and inflatables. You can purchase those at Robins Roost for \$30 if you're motorized and \$7 if you're non-motorized. If you're curious about the program, or the rules, visit idfg.idaho.gov/info/boat-stickers.



Summer is definitely for kids, and on the water is often their favorite place. If they are 14 years of age or under, playing on a kayak or paddle board of any kind, they must be wearing their life jackets, 14 and over must at least have them on board. If the kayak or paddle board is over 10 feet, it must also have an invasive species sticker on it. And both groups are required to carry a whistle by Idaho law.

There are way to many boating rules and regulations to list here, but, if your new to boating in Idaho, or think you need a refresher course, you can find the entire Idaho handbook for boating laws and responsibilities here thecalderatimes.com/idaho-boating-regulations.

Now a few of the standard items we know we are supposed to have on board, but we sometimes get caught without:

- 1 coast guard approved life jacket on board per each person on board and accessible
- If your over 16', a ring buoy or cushion you can throw (Type IV)
- Fire extinguisher
- Sound producing device
- And if you're traveling at night, navigation lights

If you are a ski boat, or a wake surf boat there are a few more!

- It takes 3! If you are towing anyone, tubing, skiing, surfing, waking, you must have a spotter.
- A flag, not just on board, but it's up if there's a person in the water!
- There is a no wake zone within 100 feet of a dock, structure, or person in the water! Too often boats go right on past someone in the water too fast, caution is in order, lives are at stake.
- Operating at night is prohibited without the proper combination of lights installed by the manufacturer.

Wakes. These are a bone of contention! Home owners around the lake have invested thousands and thousands of dollars in their docks and shorelines. I'm a surfer, and a dock owner, I'm well aware and cognizant. In Idaho, anywhere within 100' of the shoreline is a 5 mile an hour, no wake zone area, however, this is likely not far enough for a surf boat under ballast, consider 200' to be polite. There are plenty of places on the lake to surf without causing damage to other peoples property, so be aware, and please move away. Many lakes and rivers have banned this activity all together, and many states have legally increased that no wake zone to 200'. **There are already people advocating for a 700 ft wake zone on Island Park Reservoir, that will kill our sport here, PLEASE be aware of where you are!**

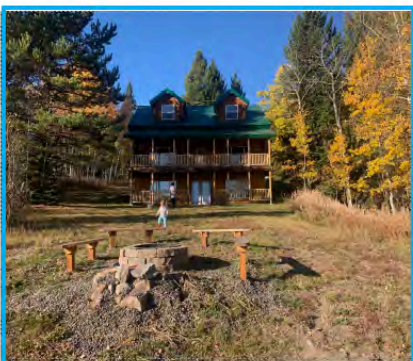
Jet Skiers, we all know you like the wake behind our boats. We do put up a nice wave to jump and play in. The law says 100 feet behind the boat, that's the closest safety zone for the surfer, skier or boarder. Enjoy yourself, but keep your distance! It is the life of the person being pulled behind the boat you are risking, and often times it is a child.

Lastly, open containers are allowed on boats. But the same rules apply to drinking and driving a boat as to any other vehicle! .08% boys and girls, gets you an OUI, which can carry a maximum fine of \$1,000 and a sentence of up to 6 months in jail. About 40 boat operators a year are arrested in Idaho for OUIs. Other stressors on a boat, including sun, motion, and wind, intensify alcohol and its reaction, think before you drink!



Christie Cameron
Year Round Local Realtor
208-351-0816
Christiecameron7@gmail.com
Associate Broker

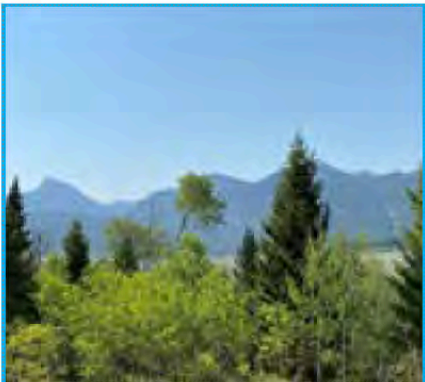
OUTBACK REALTY
4135 Sawtelle Peak Road,
Island Park, Idaho 83429



Aspen Ridge Rental
3120 sq ft, Mountain Views,
\$899,900



Last Chance/Douglas Dr
RV lot, build rental cabin,
No HOA, Sewer paid.
\$99,000



Red Rock Rd
47 acres - Borders Forest
Service - near Henry's Lk
\$1,250,000



Highway 20
Commercial lot, backs to
state land, has water,
power, & sewer 1 acre
\$299,000



Last Chance Rental
5.46 acres - 4 bedroom
suites, 5 bath
\$1,350,000



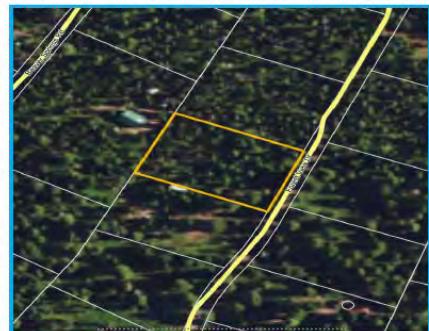
Ashton
.45 of an acre, shop and
single wide, corner lot
\$179,000



**Rancho McCrae
Waterfront**
Log home, 3 bed, 2 bath,
28x24 garage, dock
included
\$1,350,000



Yale Creek
1.75 Acres, Has septic and
power, no covenants
\$189,000




Yale Creek Lot
.88 acre
Camper lot #38
\$130,000



LAKESIDE RENTALS

Island Park Reservoir



208-558-9770

SEA-DOO can-am ski-doo

Equipment Rental

Island Park

Lakeside Lodge

3857 Lakeside Lodge 208.558.9770



UTV/ATV

Defender 6 seat \$429
Commander 4 seat \$399

SeaDoo

Spark/Trixx \$299
GTX PRO 130 \$359

Boats starting at \$495

1 up Kayaks and Paddle Boards \$ 50
2 up Kayaks \$ 80
E-Bikes \$ 85

** All prices are for full day 9 am to 5 pm
***Price does not include fuel or damage deposit

Island Park Adventures

3342 N Hwy 20 208.558.7581

UTV/ATV

Defender Max Limited \$599
Defender Max \$477
Commander Max \$457
Maverick Trail \$357
Outlander Max \$306
Outlander \$266

***Helmets are included with rentals

Sea Doo

Sea Doo Spark 3-UP \$300
Sea Doo GTX 3-UP \$400

***Lifejackets are included with rentals
***ALL rental pricing includes insurance

Will soon relocate to 4150 N Big Springs Loop

High Mountain Adventures

4141 Sawtelle Peak Rd 208.558.9572
Tuesday to Saturday 9 am to 3 pm

RZR Trail 900 50" \$299
RZR XP1000 2 Seat \$329
RZR XP1000 4 Seats \$399
RZR Xpedition 5 \$529
RZR Pro 4 Seat \$499
Kayak \$ 39
Triple Kayak \$ 60
Raft \$99/\$150
Paddle Board \$ 49
Float Tube \$ 25

Discounts for multi day rentals and multiple machine rentals



TARGHEE TRAIL RIDERS

ISLAND PARK, IDAHO

This group is open to anyone that shares a love of this area and the trail systems. Email us at TargheeTrailRidersIslandPark@gmail.com to join. We have a Facebook group called Targhee Trail Riders Island Park Idaho where information regarding upcoming events and important announcements will be posted. **Please join today!**




FUGOWEE SNOWMOBILE CLUB

ISLAND PARK, IDAHO

Join one and all, feel free to join both clubs. Both are supportive of the trails and the sport, and both will help maintain and keep our trails open.

Call or email:
Kent Bateman
ksb1@blackfoot.net
208-715-1582

Recreation Maps



Scan to download the Avenza Map App. Create an account, it's free. Find the Island Park Motorized Recreation Map, both North and South for all of the Island Park area. They also have a Caribou-Targhee National Forest Ashton-Island Park Ranger Districts Winter Recreation for a small fee. Find your trails and enjoy yourself. Please, don't forget, cell coverage here is difficult in most areas, don't count on it for your navigation. Use a paper map, or download your map to be sure you can use it.

A TRIBUTE TO OUR GREAT NATION

Everyone is invited to an evening of Patriotism presented by the cast from The Yellowstone Playhouse
A beautiful selection of songs will be performed by the cast.
Sunday evening July 7th at 6 pm
(doors open at 5:00) at the Latter Day Saints "A-Frame"
Everyone is invited, so if you live here full time or part time or if you are just passing through, please come and get in the spirit of Celebrating the birth of American Independence!



July 7th, 2024
6 Pm
350 Church Lane
Island Park, ID

FREE

EVENTS IN ISLAND PARK

Island Park

- Saturdays
- May 23
- May 25
- June 15
- June 15
- June 15
- June 29, July 27
- July 4
- July 6
- July 20
- July 19 & 20
- July 20
- August 3
- August 5
- August 9 & 10
- August 22 - 24
- August 24
- August 30 & 31
- August 31
- September 7
- Memorial to Halloween
- Memorial to Labor Day
- October 18 & 19
- October 25
- October 26
- November 29 & 30

West Yellowstone

- Thursdays June to September
- July 4 & 20
- July 13
- August 2 to 11
- August 3, 10 & 24
- August 10
- September 5 - 7
- September 14

Museum Exhibits - Ashton

- Chamber Summer Kickoff
- Pancake Feed
- Henry's Fork Days XL
- Wellness Expo 2024
- Classic Car Show
- Yoga at the Pavilion
- Fireworks
- Sawtelle Fun Run
- Mesa Falls Marathon
- Island Park Festival
- Pioneer Days - Fireworks
- I ♥ IP - IP Chamber Event
- Daisy's Angels Fashion Show
- Swaptastic Swap Meet
- Sawtelle Music Festival
- Community Pancake Breakfast
- Island Park Festival
- Yoga by the River
- Wine in the Woods
- Music (Saturdays, some Fridays)
- Shotgun Sundays
- Haunts of Harriman
- Hallowfest
- Halloween Costume Party
- Island Park Festival of Trees

West Yellowstone Market

- Music in the Park
- Wild Bill Days
- Mountain Man Rendezvous
- Music in the Park
- Horseshoes for Hero's
- Wretched Mess Arts Fest
- The Happening

Museum of the Henry's Fork

- Yellowstone Playhouse
- Island Park EMS Building
- Last Chance Fisherman's Access
- Island Park EMS Building
- Lakeside Lodge
- Sawtelle Resort Pavilion
- Lakeside Lodge
- Sawtelle Peak Rd
- Mesa Falls Scenic Byway (start)
- Sawtelle Resort Pavilion
- Lakeside Lodge
- Sawtelle Resort Pavilion
- Hines Residence
- Island Park EMS Building
- Sawtelle Resort Pavilion
- Little Church in the Pines
- Sawtelle Resort Pavilion
- Cafe Sabor
- Harriman State Park
- Lakeside Lodge
- Shotgun Bar
- Harriman State Park
- Island Park Village Clubhouse
- Lakeside Lodge
- Sawtelle Resort

Museum Lawn

- Heritage Park
- West Yellowstone Rodeo
- West Entrance (YNP)
- Heritage Park
- Hi Country Tavern
- Heritage Park
- Union Pacific Dining Hall

For more information about these events, check out our website at:
Ipidaho.com/events



IP Optics LLC

est. 2023



TROY ERICSON

Call/Text
208.965.1477

IPOpticsLLC@gmail.com

REAL ESTATE/SHORT TERM RENTALS

3D Tours & Photography

BEAR ENCOUNTERS: WHAT TO DO

Forget the nursery rhymes or color-based reactions -- YOUR reaction should be based on the BEHAVIOR of the bear, not the species.

QUIET, STEADY APPROACH



OFFENSIVE

BLUSTERY & ANNOYED



DEFENSIVE

BEAR BEHAVIORS	BEAR BEHAVIORS
Constant pursuit Very quiet Head low Seems focused on YOU and where you are	Vocal and nervous Popping jaws or lips "Huffing" at you Short bluff charge Swats the ground
WHAT'S GOING ON Bear is potentially seeking a food reward (food conditioned) or you (predatory). THIS IS A VERY DANGEROUS SITUATION!	WHAT'S GOING ON You're in the bear's space and making the bear very nervous. It is trying to tell you to back up and go away!
YOUR BEST REACTION Have bear spray ready! Let the bear know YOU are in CHARGE. Group up with others near you, act large, aggressively yell, try to get the bear to leave	YOUR BEST REACTION Have bear spray ready! Let the bear know you are NOT a THREAT by slowly backing up. Get out of their space and go away. DO NOT TURN AND RUN.



BEAR SPRAY

A simple tool that may save your life! Learn how to use it and ALWAYS carry it in bear country!

Fire Season in the Caldera

It's here again. However, whether you call it lucky or not, we have been blessed with an abundance of rain and rather chilly temperatures through out most of our spring and summer. It has produced a huge number of mosquitoes, but not a dry forest.

That could all change in a day or two. Those of us that live here know that. In the spring months, we generally take the time to prepare our properties by trimming up trees and shrubs around our homes in an effort to somewhat fire proof our homes.

For those that don't live here, whether you visit often or it's your first time, forest fires for us are a very real threat. Even though it's a good wet year, a few days over 80 degrees with a good warm breeze and we could have high fire danger rather quickly.

Before you start a fire of ANY kind, you should check to see if there is a fire ban, both with the state and the county. www.idahofireinfo.com/p/centennial-fire-restrictions.html is the state website. Fremont County will post and pin on Facebook their restrictions, search Fremont County Emergency Management for their page. If our fire dangers are high, they will also restrict the use of charcoal grills, so be diligent in watching for that as well. If your at all curious about the fires currently burning in Idaho, you can check those at www.idl.idaho.gov/fire-management/idaho-fire-map.

Even with no restrictions, whenever you decide to have a campfire, you should consider having a fire extinguisher or water source close by and keeping you fire small enough to manage easily. We do all love a warm camp fire to gather around, roast marshmallows on, tell ghost stories over, and make memories across, but please help us keep our forest and our homes safe!



Christi Spinner

kW KELLERWILSON
REALTY EAST IDAHO

208-604-2153

Serving Island Park & All of South East Idaho



3795 Taylor Mountain

Luxury living with rustic charm new build in Centennial

Shores. Gated waterfront community, fully furnished & turn key. This cabin boasts 360 Lake & Mountain views, 5 beds, 5.5 baths (2 masters), fully landscaped yard front& back, granite throughout, custom cabinetry heated bath floors, forced air heat & AC, huge shop w/full apartment above. Very short walk to one of 3 private Island Park Reservoir accesses. Year around access.

MLS#2158106

\$1,895,000



5085 Trumpeter

Stunning cabin in a secluded and quiet lake front subdivision on Henry's Lake. Very successful Vacation rental,

fully furnished & sold "Turnkey". Take in the most beautiful lake, mountain, & sunset views, perched on a manicured corner lot, beautifully landscaped, firepit area, room for RV & huge deck wrapping the home. Large open kitchen, dining and living room for gathering & entertaining, attached heated garage for all the toys. World renowned fishing.

MLS#2157924

\$1,365,000



SOLD

3760 Cove Ct

Beautiful **WATERFRONT LOT** in gated Centennial Shores

Subdivision. Outstanding Centennial Mountain, Island Park Reservoir, and unobstructed sunrise and sunset views. Allows for Vacation Rentals & Guest House in Addition to Main House. One of the last remaining!

MLS#2153167

\$749,000



Shadow Ridge Subdivision

In Ashton, Gated Community, creek front lot, no short term rental allowed,

Walking distance to World Class Fly Fishing, Year Around Access. Borders Public Land. 4376 Granite Ridge, 5.5 acres

MLS#2162869

\$349,000



3824 Bills Loop N.

Waterfront oasis, complete Island Park package! ¾ acre wooded lot, private dock, lake front deck, easy year round access in secure

gated community. Waterslide, firepit, 30x24 shop, covered front porch & back deck. Perfect summer lake house, residence, or vacation rental. Fully furnished "turn key". Interior updates include tiled baths and kitchen, incredible rocked floor to ceiling propane fireplace, pine tongue and groove throughout, hardwood floors. Beautiful furnishings and finishes with rustic elegance & charm. Come see, life is better at the lake!

MLS#2164896

\$1,199,000



4124 Lariat Way

Hand Hewn log cabin in the woods built by famous Johnny Sack. Nestled on 5.3 wooded acres

with miles of great Views, seclusion & privacy. Cabin has been fully restored with so much charm & character. Boasts custom wood work & tile work in all baths, spacious updated kitchen, new flooring throughout. Bonus room w/ loft, outbuildings, concrete apron & walk-ways, energy efficient zonal cadet heating, new water heaters & majority of electrical/plumbing systems are new. Fully furnished and borders 1 Million acres of Caribou National Forest, BLM, & state land.

MLS#2165007

\$799,000



Ice House Creek

6.39ac lot with Ice House creek frontage, perfect amount of forest, creek, with Teton & Island Park

Reservoir views, Has water connection, power, fiber, septic approved & building plans available. Perfect building lot, flat with clearing to build, wooded for privacy, & year round access. Allows for livestock and vacation rentals. Power & phone are to the lot, property markers are in place. Come build your dreams!

MLS#2164601

\$289,000



3797 Taylor Mt

Ultimate family gathering place, fully furnished. Just under 4600 sq ft, boasts 7 private bds, including main floor master and 3

ensuites. 6 full baths w/Custom tile work. Layout for entertaining, comfort & fun. Backs to 30+ ac of green space. Double sided rocked propane fireplace, new jacuzzi hot tub, decks with mountain and lake views, granite, & game room. Gated lakefront community, access to boat launches with vinyl docks, grassy park, pavilion & firepit areas right on the lake. Ride ATVs in the summer and snowmobile in the winter leaving directly from property to access 700+ miles of trail systems. Year round access & incredible vacation rental permitted for 30 person occupancy. Room for a garage & subdivision allows a guest house.

MLS#2164890

\$1,987,000



3327 Eagle View

3.13 ACRES with Year round access & short term rental. Beautiful building lot in Eagles View subdivision. Outstanding Centennial Mountain Views & peek-a-boo Island Park Reservoir views coupled with unobstructed sunrise and sunsets. Perfect location for all the recreation one could desire. Leave right from your property on E-bikes, 4-wheelers, dirt bikes, snowmobile, sno shoe, cross country skis or YOUR PRIVATE PLANE. Yes, with this lot you get use of the private landing strip exclusive for Eagles View HOA members. Close to Island Park Reservoir beach access as well with great fishing and watersports. Easy year round access, allows for STR (vacation rentals) and guest house in addition to main house. Great time to get into this newer development that is taking off! Don't miss out.

MLS#2165564

\$169,000



**DAD'S CONSTRUCTION
AND SERVICES**
208-932-3152 OR 208-380-4967

- **Trash Service**
Weekly pick up
Bear proof containers
- **Dumpster rental**
7 x 14 x 4 Bins
\$200/wk + \$100/delivery + dump fee
- **Equipment rental**
Forklift
\$210/day
*call for discounted long term pricing



THINKING OF SELLING?
GIVE ME A CALL!



ISLAND PARK REAL ESTATE
CONSULTING
BUYERS AND SELLERS
PUT MY KNOWLEDGE TO
WORK FOR YOU!
COMMERCIAL,
RESIDENTIAL AND LAND

JACKIE JENSEN
208-390-8303

I LIVE IN ISLAND PARK YEAR-ROUND
AND HAVE A LOCAL OFFICE
OUTBACK REALTY

Upper Snake River
Region Fishing Info

To fish in Idaho any person 14 years of age or older must have a valid fishing license.

- *Idaho resident Anglers younger than 14 do not need a license and have their own limit.
- *Nonresident angler under 14 must be with someone who has a valid fishing license and their fish are included in the license holders unless they purchase their own separate license.

Special fishing permits are needed for some activities for both residents and nonresidents:

- *Fishing for salmon and steelhead
- *Fishing with two poles.

Purchase your license at one of the following:

- *Online at idfg.idaho.gov/buy
- *Or the following local locations:
 - Elk Creek Station (Near intersection of Hwy 20 & Yale-Kilgore Rd)
 - Sam Patch Grocery (Near intersection of Hwy 20 and Sawtelle Rd)
 - Lakeside Lodge (On the reservoir at the end of Buttermilk Rd)

For a full list of regulations, open waters, and limits, visit:

TheCalderaTimes.com/upper-snake-fishing-regs

Caldera Restaurant Days and Hours		
<u>Anglers Lodge</u>		
3363 Old Hwy 191	Daily 12 pm - 10 pm	406.558.9555
<u>The Bighorn Bar & Grill</u>		
14355 Hebgen Lake Rd	Daily 11 am - 10 pm	406.589.8513
<u>The Grill @ The Blue Buffalo Resort</u>		
3402 N Hwy 20	Tuesday - Saturday 11 am - 6 pm	208.220.7896
<u>Cafe Sabor</u>		
4298 Hwy US-20	Wednesday - Saturday 11 am - 9 pm Sunday 12 pm - 8 pm Closed Monday and Tuesday	208.558.9300
<u>Connie's Restaraunt</u>		
4130 Quakie Lane	Sunday, Monday & Thursday 11 am - 9 pm Friday & Saturday 11 am - 10 pm Closed Tuesday & Wednesday	208.558.6987
<u>Happy Hour Bar & Grill</u>		
15400 Hebgen Lake Rd	Monday, Tuesday & Wednesday closed Thursday - Saturday 12pm - 11 pm Sunday 11 am - 11 pm	406.646.7281
<u>Lakeside Lodge</u>		
3857 Lakeside Lodge Lane	Daily Lunch 11 am - 5 pm Dinner 5 pm - 9 pm Bar 10 am - Close	208.558.9770
<u>Meadow Creek Lodge</u>		
Meadow Creek Road	Friday - Sunday Breakfast 8 am - 11:30 am Lunch 11:30 am - 3pm	208.351.2787
<u>The Parlor at Mack's Inn</u>		
4169 N Hwy 20	Sunday - Thursday 11 am - 9 pm Friday & Saturday 11 am - 10 pm	208.558.2450
<u>Pond's Lodge</u>		
3757 Hwy 20	Sunday - Thursday 11 am - 9 pm Friday and Saturday 11 am - 10 pm	208.558.7221
<u>Springhill Suites Island Park</u>		
4292 N Highway 20	Daily Drinks @ 4 pm, Dinner 5 pm - 10 pm	208.558.2400
<u>Subway</u>		
4141 Sawtelle Peak Rd	Monday - Saturday 8 am - 3 pm	208.558.9884
<u>Phillips Lodge- The Lodgepole Grill</u>		
3907 Phillips Loop	8 am -8 pm Closed on Wednesdays	208.558.9379
<u>Trouthunter-Last Chance Bar & Grill</u>		
3327 Hwy 20	Breakfast 7 am - 11:30 am Lunch 12 pm - 2:30 pm Happy Hour 4 pm - 5 pm Dinner 5 pm - 10 pm	208.558.8006

Summer Horse Back Riding

A great family activity that most folks don't get to partake in at home is horseback riding through the mountains. It's a pleasant way to spend part or all of your day! We have cowboys ready, willing, and able to take you on a scenic day trip.

Dry Ridge Outfitters are a unique local brand! They have been guiding horse rides in Idaho as a family for over 70 years, and most of their string of horses are born right on the ranch, raised and trained by them. These Cowboys will take you through some of the most beautiful parts of Harriman State Park, and can tailor the ride to your group size and needs. To learn more visit DryRidgeHarriman.com/horse-rides.

Yellowstone Horses at Eagle Ridge Ranch offers a wide variety of options for day trips. Mid May through mid September, Monday through Saturday, these good folks offer morning trips, afternoon rides, and evening outings paired with a western cookout dinner. All are available to choose and book at their website here Yellowstoneworld.com/schedule-rates/.

Diamond P Ranch is on the way to West Yellowstone, but is the only outfitter west of West Yellowstone in Montana with permits to guide horseback rides into the Gallatin National Forest. You can book morning, afternoon or evening rides for an overlook into Yellowstone National Park and the Continental Divide, or check for a private ride. More information can be found at TheDiamondPRanch.com/rides/.

Creekside Trail Rides might be the place to go if you want a shorter ride, or a wagon ride. One hour horseback rides start at 9:30 am, run through 5 pm Thursday through Saturday and walk- ins are welcome. You can schedule your ride here through Westyellowstonerodeo.com/creekside-trail-rides.



Annual Fun Run and Marathon Dates

If you enjoy these kinds of events, there are several in our area you might consider signing up for.



July 6th is the **Annual Island Park Sawtelle Fun Run**, which is a benefit for The Island Park Community Trail Project was a concept taken into reality by the Ashton/Island Park Ranger District and the All-American Sawtelle Fun Run Committee. Their goal was to establish a non-motorized route to connect Harriman State Park to Henry's Lake using existing National Forest System trails identified as key connectors for the proposed routes to provide non-motorized opportunities for visitors, guests and locals who seek this type of outdoor recreational experience. The completion took the combined efforts and contribution of funds from the annual All-American Sawtelle Stampede Fun Run and the many dedicated volunteers who have graciously committed their time & labor. You can find more information, or register to participate at IslandParkSawtelleFunRun.com.

July 20th is the **Mesa Falls Marathon**, rated the best Idaho marathon by runners. If you have not run this before, this is an amazing course. USA Today, in a 2013 article, listed it as one of the Amazing Races to Run before you die. With a starting elevation of 6135 ft, the course features a blend of running surfaces from blacktop and pavement to packed trails along Warm River, running generally downhill to a finishing elevation of 5253 ft. Spectacular views of Targhee National Forest, Teton Mountains, Lower Mesa Falls on the Henry's Fork of the Snake River, and Warm River all combined with the beginning terrain of sagebrush and evergreens ending in flowing farm ground provide a breathtaking backdrop. For more information or to register to to MesaFallsMarathon.com.

August 3rd & 4th is **Yellowstone Trail Race**. You don't want to miss this spectacular trail run just outside of Yellowstone National Park! The West entrance and gateway to Yellowstone National Park is surrounded by three national forests, blue-ribbon trout streams, and beautiful mountain lakes. Come run a 50K, 25K or 10K trail run with breathtaking scenery that takes place right outside the world's first National Park on the trails of Custer Gallatin National Forest. All races are on both Saturday and Sunday. More information here: runsignup.com/Race/MT/WestYellowstone/YellowstoneTrailRace.

Summer Rodeos



Who doesn't love a summer rodeo? The smell of horses, the thrill of the ride, watching that rope swing just right. It's always been a favorite. There are some fantastic options most nights of the week throughout our summers here in the Caldera!

One of the favorites is **Meadow Vue Ranch**. This is a summer youth horse camp that invites the public two nights a week to show off some of the skills they have learned. After starting off with the rodeo events such as bull riding, saddle bronc riding, bareback riding, barrel racing, pole bending, roping, kids calf riding, and the calf scramble, they rustle up dinner featuring hand cut fire grilled steaks, dutch oven chicken, dutch oven potatoes, baked beans, corn salad, coleslaw, cornbread, biscuits, and peach cobbler and ice cream for dessert. Entertainment during dinner is cowboy songs, old and new, by Fall River Boys, and after dinner stay and enjoy the music, and the scenery of Henry's Lake Idaho, or get up and dance, if you don't know how, they can teach you, line dance or country swing! These start June 24th and run through August 5th on Wednesday and Saturday nights. Buy tickets, or find more information at Meadowvueranch.com/rodeo-%26-dinner.

The other is the **Wild West Yellowstone Rodeo** part way to West Yellowstone in Montana on Hwy 20. Every Wednesday through Saturday from mid June to August come watch cowboys and cowgirls compete in events such as bull riding, team roping, breakaway roping, bareback riding, saddle bronc riding, and a calf scramble for the kids. For more information, or for more information go to <https://westyellowstonerodeo.com/tickets>.



Fishing Report



Henry's Fork

The Henrys Fork has been fishing well, this past week the weather has warmed up and more bugs have started to hatch. Lots of short rainstorms in the afternoons have made for some good conditions for hatches to come off. You'll most likely find yourself in a caddis and/ or PMD hatch in the evenings, for the PMDs we recommend a CDC Dun #18 or a Hackle stacker #16, for the Caddis we recommend the E/Z Caddis or a Missing Link both in size #16. For the day we suggest running a dry dropper rig, using the Chubby Chernobyl #8 in orange or red colors, then dropping a Split Case PMD#16 or a Tung. Jig Pheasant Tail #12. Be on the lookout for Green and Brown Drakes in the following week. The Harriman Ranch officially opened June 15th!

Madison River

The Madison is still in run-off, which means lots of discoloration in the water and the bite could be turned off in many parts of the river. The cfs is at 3600 ft3/s so be careful when wading and putting in boats. Try fishing streamers like the Olive Jig Slum Lord #6, the Goldie #4 and Galloup's Tips Up White #4. With nymphing or dry dropping, we suggest using a large Burkus X-Rated Stone #4 and underneath that fly or an indicator use an Electric Caddis #14 or Pats Rubber Legs #4/6. We should start to see it clear up soon and the hatches will follow shortly after.

South Fork

The South Fork is running at 18000 ft3/s, this warm weather has melted that snow fast and it's getting a lot of runoff at the moment. Be extra cautious when floating and especially when wading. All those fish are going to be displaced and won't be looking up at all. We recommend throwing streamers such as the Rusty Trombone #4 or the Articulated Sparkle Yummy #4. For indicator fishing try using a Jake's DB Rib Worm #12, Tung. Prince Nymph #12 or a Pats Rubber legs #4/6.

Henry's Lake

The Lake has lost its "bank bite" and most of the fish have moved away from the banks and into deeper water due to the warmer temps, but that does not mean the fishing has stopped! Boats or Float tubes are recommended. We suggest fishing the deeper water and near the springs on the West side. Try stripping a Hot Bead Jolly Rancher #12 or a Thin Mint #14. If you want to use an indicator, try it with a Lightning Bug Red #16, as well as the Frostbite Chironomid #14. The wind has been picking up in the day and casting can be tricky, so try fishing earlier in the morning.

Yellowstone National Park

The park had some cold weather move in earlier this week, but now the warmer temps are starting to bring back that bite and fishing is great. The Firehole is at 448 ft3/s and so it has dropped down to average flows, we should expect it to settle here shortly. We recommend stripping or swinging a BH Simi Seal leech in colors black/red and peacock both in size #10. You should also trail those with a Tungsten Bruised PMD #14 or a Partridge/peacock Soft Hackle #16. For dry flies try the Hot Spot Para Wulff #16 and Spruce Almighty #12.



Pink Albert
(Epeorus Alberte)

Brown Drake
(Ephemera simulans)

Spotted Sedge Caddis
(Hydropsyche)

Pale Morning Dun
(Ephemerella inermis)

Golden Stonefly
(Acroneuria, classenia)



Trico
(Trycorythodes minutus)



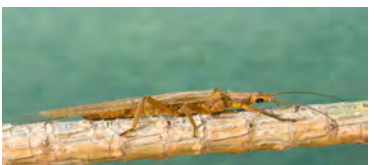
Salmonfly
(Pteronarcys)



Flav
(Drunella flavilinea)



Small Stoneflies
(Isoperla, alloverla)



Peak or Major Fly Hatches for July

Getting Ready for Spring!



We're working to help build a better Island Park! Keep up with us on Facebook or our website.

MountainLifeCharity.org



ipIdaho.com



Kristen Andelin
Kristen@IpIdaho.com
(208) 360-8850



Tina Crow
Tina@IpIdaho.com
(208) 573-8304



Troy Ericson
Troy@IpIdaho.com
(208) 965-1477



Henry's Lake Community
5436 Pintail Road
MLS # 2164891
\$1,645,000



Last Chance
3422 Oakwood Dr
MLS # 2163945
\$675,000



Henry's Lake Community
3918 Lake Breeze Drive
MLS # 2163740
\$612,000



Sawtelle Area
4012 Red Fox St
MLS # 2165276
\$625,800



WATERFRONT
2780 E Pinehaven Dr
MLS # 2165065
\$1,300,000



Lot with Shop
3825 Sage Ln
MLS # 2164725
\$659,000



Last Chance
3769 Lava Ln
MLS # 2163915
\$645,000



Sawtelle Estates
4010 Coyote Road
MLS # 2163793
\$520,000

Looking to buy or sell?

Contact The Mountain Life Team
GoTeam@IpIdaho.com
(208) 534-6775



Shawna Fuller
Shawna@IpIdaho.com
(208) 731-3688



Patty Laritz-Bithell
Patty@IpIdaho.com
(208) 846-4846



Lynette Tingey
Lynette@IpIdaho.com
(208) 851-8474

First Street PLUMBING & HEATING

Voted Best of Best
2020-21-22



www.FirstStreetPlumbingCenter.com

Service • Repair • Installation • Parts • Plumbing
Heating • Water/Sewer Line • Water Heaters
Softeners • Sewage

208-522-6896

345 1st St • Idaho Falls • Since 1942



**EAST SUMMIT
EXCAVATING**
SERVING EAST IDAHO
EXCAVATING, GRADING, SEPTIC
Call or Text for a Free Quote
(208) 569-6017



208-569-4763
Let Solar Scrub keep your solar panels
clean & producing optimal power
generation all year long.
We also do exterior cleaning of
businesses and homes.
Serving all of Southeast Idaho
Call us for a Free Quote



ASAP SEPTIC PUMPING

208-390-7559

Full time Septic Pumping In Island Park
Tank Locating, Digging and Inspection
for STR and Real Estate Sales Inspection

24 Hour Emergency Services

LOOK FOR THE BIG RED TRUCK

Asapumping.com



I SAW THAT
CUSTOM CHAINSAW
CARVING
TREE REMOVAL
MISC. CABIN REPAIR
AL PARKS
CALL/TEXT FOR FREE ESTIMATE
208-200-9404

Huckleberry Harvest!

By Tom Bithell

It won't be long until Huckleberry Season is here. Huckleberry picking is very popular here because they are all over the forest around Island Park and Yellowstone. Huckleberries grow in abundance in the forests of Idaho, Montana and Wyoming that surround Island Park.

The Huckleberry is a delicious berry and a cousin of the Blueberry. It even looks like a miniature Blueberry and tastes somewhat similar. However, the Huckleberry is sweeter and, frankly, the more delicious of the two

The Mountain Huckleberry is the State Fruit of Idaho and one among many types of Huckleberries that can be found. Many people enjoy picking Huckleberries as a yearly tradition. It is a true labor of love that may entail hours of hiking and picking to get enough berries to make anything substantial. But it's addicting..

The trick is finding where the Huckleberries are. People tend to keep their Huckleberry spots secret like fishermen do with their favorite fishing holes. Here are some tips to help you find Huckleberries.

- 1. Huckleberries like a lot of shade so they grow best in the openings among trees where they are not exposed to lots of direct sunlight.
- 2. Huckleberries tend to grow better on slopes. South facing slopes tend to yield Huckleberries earlier and in higher numbers.
- 3. Huckleberries grow best in Idaho between 5,000 and 7,000 feet. Start looking at the lower elevations in later July and move up in elevation as the season progresses.

There are many areas from Ashton hill to Bozeman and Kilgore to Cody where bountiful patches of huckleberries can be found. They can be found right along roadsides and parking lots. But to find a good patch where you can pick your bounty, you have to find a place not everyone knows about. Often if you find a forest road where people are picking and you're willing to hike a little steeper and farther, you'll find a patch. The roadside picking is easy. You can filter out a lot of competition by going a little further.



However, be aware, bears like huckleberries too. You need to be wise when picking around here. Groups of more than two are rarely attacked by bears. The more people with you, the less likely they'll be aggressive. Staying close to each other, making noise, being vigilant and carrying bear spray are key safety practices.

I also recommend dressing right. People like to pick in shorts. I wear long pants to avoid legs being scratched from the brush, and bug and mosquito bites. Long sleeve shirts and good footwear are also beneficial.

If you have never picked huckleberries, it's a great experience. If you follow the tips given you will find them. Keep looking, it will happen. Happy Huckleberrying!



Caldera
Custom
Docks
ISLAND PARK, IDAHO

DOCK SALES/SERVICE/MAINTENANCE

208-313-2858
Calderacustomdocks.com

FEATURING
Wave
Armor
PRODUCTS

Lodging•Dining•Events•Rentals•Tours

BLUE BUFFALO
RESORT

208.558.7112•ISLAND PARK, ID

Blue Buffalo Resort

Cozy cabins,
winter adventures
and warm hospitality.
Scan the QR code
for more info and to
book your stay!

scan for menu

Blue Buffalo Grill

American classics
and creative
comfort food.
Open: Mon-Sat
11am-7pm
For Take-Out call:
208.220.7896

3402 N. US-20
Island Park, ID
www.BlueBuffaloResort.com



4426 Deer Crest Drive
MLS#2155834
\$1,500,000

This ready to occupy Custom 4 bd, 4 bath home is in a gated community. Quality build, looks and smells new. Circular sawn hickory floors. Hickory cabinets & slate tiled kitchen. Granite countertops throughout & stainless steel appliances. Carpet the 4 bds & both family gathering areas. All year access, forced air heat & on demand hot water. Hand carved bears on beams in great room. 1.83 acre treed lot. Oversized 896 sq ft heated detached garage. Trex deck & covered entry. Private well & city sewer. 1000 gal buried propane tank is owned. Comes with most furnishings & the John Deere snowblower in the garage. **Owner will carry a loan for up to 10 years with 15% down at just 5% interest.** 10 min from gas, golf, and Henrys Lake. 15 min from Hebgen and 20 min from West Yellowstone. A perfect place to play and enjoy.



3509 Rocky Lane
MLS#2163483
\$330,000

This cabin sits in a river community on a treed lot in Island Park Idaho. 2nd lot is available to purchase separately or bundle with cabin for those looking for more land. The area has access to the river and use of a community dock and boat launch for property owners. Cabin is strong with new roof and many upgrades including an 8x27 shed for storage. Additional outdoor storage attached to cabin. An attached carport gives many options. Cabin has been well maintained. Pinehaven is adjacent to the North Fork of the Snake River and Harriman State Park.



3860 Rainbow Drive
MLS#2165118
\$285,000

Built strong, this covered trailer has withstood many winters. Property sits on 2 lots close to the Buffalo River and ATV access point. Included are 2 RV Parking areas with water, power and sewer hookups. It's a heavily treed lot with Room to build a 2nd structure. Short term rentals are allowed, great investment property. Home is in great condition and subdivision is accessible all year long. Enjoy fishing, hunting, mountain biking, ATV riding and hiking out of the development, gas and restaurants are within 3 miles of the home.



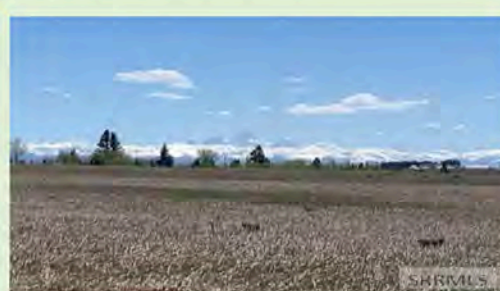
3565 Piney Road
MLS#2162949
\$189,000

Great cabin near the within walking distance to the North Fork of the Snake River and the Buffalo River. Very private area with large treed lot. Winter access by snow shoe or snow mobile. Storage shed included. Cabin sits on Forest service leased land.



4176 Pincrest
MLS#2163543
\$174,000

Great building lot in heavily forested area of Island Park. Enjoy the wildlife & old fresh smell & walk the 1.75 acre lot in Yale Creek Subdivision. This property has all year access. Area has no active HOA & short term rentals are allowed. Great lot for a family cabin or income property. Close to snowmobile & ATV trails. Boat launch within 5 miles on Island Park Reservoir. Lot is level & deep so placing a cabin has many options. Live in a trailer as you build the home. Many options available.



1653 E Rim Loop
MLS#2162763
\$180,000

Great building lot with Teton views. Close to Snake River and forest service access. This lot has access from E Rim Loop Rd at top & Hale Canyon Rd at the bottom. With a building envelope on top & bottom of lot property owner has many options for trailer parking or dry camp. Fish, ATV, Mtn bike, gravel or road bike the area. Float the Snake River at the Warm River launch & get to the boat take out 1.5 miles from property. Close to Cave Falls area of Yellowstone National Park & Robison Creek area. Short term rentals allowed. 10 min from gas & restaurants. Lot sits at the back of dead end street limiting traffic & dust.



Clint Farmer

435-770-3971

Clint@Rainbw.com

Honesty and Integrity. Two things you should consider when looking for a real estate professional. For 18 years I have served the Island Park area as a real estate professional being honest, hardworking and maintaining my personal values. As a result, I have enjoyed many repeat customers.

As an expert in property evaluation I can get your property priced and sold at a great return. As a buyers' agent, I can advise on the quality of the investment property and potential for earned equity.

Call today for a free property valuation!

**Rainbow Realty
A Utah Company**

Events this Month

Lakeside Lodge July Live Music:
Satin Steel July 4th - 6th 8 pm
Aaron Ball Band July 19th 8 pm, July 20th 7pm
Perfect Chaos July 27th 8 pm

Celebrate Independence
Day with a Bang!
Fireworks start at 10pm
Live Music starts at 8pm by
Satin Steel





THU, JUL 4 AT 10 PM
Independence Day Fireworks
3857 Lakeside Lodge Lane, Island Park, ID, United S...

YELLOWSTONE
HISTORIC CENTER
ANNUAL PIE
ON THE PORCH
EVENT IS OPEN TO THE PUBLIC



JULY 4TH, 2024
1 PM 'TIL PIE RUNS OUT!

UNION PACIFIC DINING LODGE

4
THURSDAY, JULY 4, 2024 AT 1 PM - 3 PM
Pie on the Porch
Union Pacific Dining Lodge

The Museum of the Yellowstone is seeking volunteer bakers to make pies for our annual Pie on the Porch Fundraiser. Please contact us at admin@museumoftheyellowstone.org for information.

SAWTELLE
FUN RUN
SATURDAY JULY 6, 2024



WELCOME ABOUT MAPS SPONSORS RESULTS CONTACT TEST

**** ONLINE REGISTRATION IS NOW LIVE ****
<https://runnercard.com/roadrace/public/raceGroup/977201>

LIVE COMEDY




Featuring:
KIP ATTAWAY
SINGER - SONGWRITER
HUSBAND & FURRY GUY
America's Premier Cowboy Comedian

JULY 12TH & 13TH, 2024
8-11PM
Don't miss comedy at the dance

FRI, JUL 12 AT 8 PM
Lakeside Lodge Hosts: KIP ATTAWAY
3857 Lakeside Lodge Lane, Island Park, ID, United S...

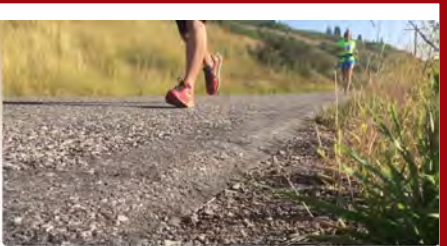
Wild Bill Days
West Yellowstone



Jimmie Allen
CHASE WRIGHT

SAT, JUL 13 AT 4 PM
6th Annual Wild Bill Days MT
West Yellowstone, MT

15



SATURDAY, JULY 15, 2023 AT 5:30AM - 8:30AM
2023 Mesa Falls Marathon
Auditor 18890



3402 N Highway 20
208-558-7112

Tuesday nights, July 2nd, 9th, and 23rd
music on the rooftop

Saturdays July 13th, 20th, and 27th Farmers
market

AARON BALL BAND



Lakeside Lodge
Pioneer Day
Celebration

Fireworks!
July 20th
10:00 pm

July 19th and 20th
Island Park, ID

West Yellowstone • MT
CALENDAR of EVENTS

SUMMER 2024

June 7-8	Yellowstone Trail Half Marathon
June 15	Lawnmower Races [at Big Horn Bar]
July 4	Independence Day Celebration & Pie on the Porch
July 4	FREE Music in the Park [The Powell Brothers @ Pioneer Park]
July 13	Wild Bill Day [at West Yellowstone Rodeo]
July 13	Mountain Bike Biathlon
July 13	Kids in the Park and Touch a Truck [at Pioneer Park]
July 20	Heritage Celebration
July 20	FREE Music in the Park [Lies or Lullabies @ Pioneer Park]
Aug. 2-11	West Yellowstone Mountain Man Rendezvous
Aug. 2	FREE Music in the Park [Tail-hooked @ Pioneer Park]
Aug. 2 & 3	West Yellowstone Rod Run
Aug. 3	FREE Music in the Park [The Waltons @ Pioneer Park]
Aug. 3 & 4	Wyoming Desperados Shootout [at Diamond P Ranch]
Aug. 10	Horseshoes for Heroes [at Big Horn Bar]
Aug. 10	FREE Music in the Park [Slamabama @ Pioneer Park]
Aug. 17	POWMIA Ride [11th Annual MT Ride to Remember: POWMIA]
Aug. 25	Christmas in August [at Museum of the Yellowstone]
Aug. 26	FREE Music in the Park [Austin English and Band @ Pioneer Park]
Sept. 6-7	The Wreched Mess Fest [Union Pacific Dining Hall & Bob Jacklin Casting Pond]
Sept. 8	WYSEF Golf Tournament
Sept. 14	The Happening
Wild West Yellowstone Rodeo	Farmers Market on the Museum Lawn
mid June - August Every Tuesday - Saturday	June 1st through September 28th Every Thursday 5-8pm



More info - WWW.DESTINATIONYELLOWSTONE.COM/CALENDAR





SAVE THE DATE
July 12th
Tee off at 3PM

- Golf Scramble
- Raffle & Silent Auction
- Putting Contest
- Food ~ Drinks ~ Fun
- Prizes
- Call us to sign up!

We're looking for Volunteers and Raffle Donations! Call Jackie (208) 390-8303



ISLAND PARK COMMUNITY FUND
Charity Golf Scramble
Sponsored by Outback Realty

2024
ISLAND PARK FESTIVAL
4133 Quakie Lane, Island Park, ID 83429
Sponsored by: Sawtelle Mountain Resort & Connie's Restaurant

Pioneer Day Weekend
Friday, July 19th, 11AM - 8PM
Saturday, July 20th, 10AM - 7PM

Labor Day Weekend
Friday, August 30th, 11AM - 8PM
Saturday, August 31st, 10AM - 7PM


FREE TO THE PUBLIC

Over 150 Vendors
Food Trucks
Arts • Crafts • Antiques • Jewelry • Souvenirs
Wood Decor • Children Activities • Door Prizes
Live Chainsaw Demo • Smokey the Bear

Scan for More Info Scan for Directions



VENDOR INFORMATION: Call or Text Jean 208.431.3229



WEST YELLOWSTONE PUBLIC LIBRARY:

Library Hours:
Tuesdays, Thursdays, and Fridays 10:00 AM - 6:00 PM
Wednesdays 10:00 AM - 8:00 PM
Saturdays 10:00 AM - 2:00 PM
Closed Sundays and Mondays

Free Spanish-to-English Classes:
Beginner Level: Mondays and Fridays at 5:00 PM
Intermediate Level: Mondays and Fridays at 6:00 PM
Lego Club: Tuesdays at 3:15 PM
Pre-K Storytime: Wednesdays at 11:00 AM
Chess Club: Fridays at 4:00 PM

West Yellowstone Public Library
23 Dunraven Street
West Yellowstone, MT 59758
(406) 646-9017
<https://westyellowstonepubliclibrary.org/>

ISLAND PARK LIBRARY ACTIVITIES

CHILDREN'S STORY HOUR Fridays at 11:00am

CRAFTY CORNER Thursdays at 3:30 pm
Bring your favorite craft i.e. knitting, crocheting, coloring, puzzles, etc. or just come and socialize.

YOGA Wednesdays at 3:00 pm
Please bring your mat.

HERBAL TEA PARTY 3rd Monday of the month at 1:00pm
Refreshments welcome.

COOKBOOK BOOK GROUP 1st Monday of each month at 1:00pm
Please call the Library at (208) 558-0991 for additional information.
Bring a dish made from a recipe in the monthly designated cookbook.

Jul. 1st -The I Heart Naptime by Jamielyn Nye
Aug. 5th -Bring your own recipe
Sep. 9th -Magnolia Table by Joanna Gaines
Oct. 7th -In Memory's Kitchen: A Legacy from the Women of Terezin
Nov. 4th -Bring your own recipe
Dec. 2nd -Betty's Favorites (Christmas Party)

Centennial Excavation

Shiloh Owens Jami Owens
208-589-8313 208-589-6893

Wedigldaho@hotmail.com

www.WeDigsIdaho.com

LIC # RCT-1774



Excavation • Road Building • Lot Clearing • Complex/Standard Septics
Utility Trenching and Installation • Demolition • Gravel

WE DIG IDAHO

Hiking Reminders

We have some of the most beautiful hiking trails in the world right here in Island Park, and if that's not enough, Yellowstone Park is a stones throw away for all the hiking you can imagine. Spectacular views, wild flowers, rivers, lakes, streams, and wild life of all kinds can be your picture perfect day.

There are some dangers associated with hiking in the wilds we call home though. The woods around us are still wilderness and being prepared can save your life. You might think it's silly if you're just going out for a quick day hike, but you should always consider a pack with the following items:



- Map
- Bear Spray
- Sunglass and a hat
- Sunscreen
- Flashlight
- Waterproof matches and/or lighter
- Snacks, high energy bars, granola, candy, or fruit
- Extra clothing, including a bright colored rain poncho. Temperatures can change dramatically, especially in the mountains with elevation changes. For every 1,000 ft the temperatures generally can drop about 3 to 5 degrees.

The recommendations are, that you never hike alone, take frequent rests, drink plenty of water along the way, let the slowest person in your group set the pace, wear appropriate clothing and sturdy hiking boots, and consider a hiking pole or walking stick. Be mindful of your surroundings, and don't wear ear pods so you can hear the woods or the wild life. Make sure you have a plan, in case of an emergency, what will your group do? If someone is injured or a medical emergency occurs, how will you handle it? Be sure to leave an itinerary with a friend or family and check in with them upon your return.

Have small children in your group? You might consider some advance planning. Teach them what to do if they become lost or disoriented.

Make sure they have the tools to survive! Pack their backpack with their own things, water, snacks, a whistle, and a brightly colored poncho. If you come across a predator, make sure your child knows the dos and don'ts of wildlife interaction. Teach them not to hide, but stay in plain sight, sing loudly to themselves, and blow their whistle with sharp blasts every 3 to 4 minutes. Remind them to stay hydrated, calm, and to stop moving. Practice these things with them so the chances of finding them go up exponentially.

The Gallatin County Search and Rescue has compiled a list of Lost Person Behaviors for a variety of different personalities on their Facebook page. Persons with Dementia, Gatherers, Hikers, and Small Children all have common threads you will need to provide searchers to be found, but there is unique information about each, if you can provide, that will assist in locating them more quickly and efficiently, which can lead to a more desirable outcome. A quick search of Lost Person on their Facebook page will bring up all the articles, read up on the topic or topics that best fit your group before heading out!



Get a great rate on Cabins!

Stay in a one, two, or three bedroom cabin
Every cabin includes private hot tub
Fireplace and WIFI TV

Open

Full Bar

Daily

8 am – 8 pm

Closed on Wednesday

Serving Breakfast, Brunch,
and Dinner

Homemade Soups Everyday

Prime Rib Everyday



208-558-9379 – Lodgepole Grill

Cabins@PinesIslandPark.com



14 YARD DUMP BEDS

Available for all your construction material needs whether you need product hauled to you or you need construction waste hauled away,

Give us a call today!

208-569-4763 or 208-351-7058

Off Road Vehicles Requirements and Rules

In addition to boating season, it's also OHV (Off Highway Vehicle) season. This can mean any number of things, all terrain vehicles (think four wheeler), side by sides, motorcycles, or four wheel drive vehicles. When it's too cold to be on the water, we find ourselves in the forest, on the trails, in any number of these types of transportation devices. And, as with boating, there are rules that come along with using them, both for residents and non-residents.

If you plan to use your OHV in either Idaho or Montana (on the trails into West Yellowstone for instance), you will need the correct recreational permit sticker for each state. In Island Park, you can purchase your Idaho sticker at Harriman State Park, Henry's Lake State Park, or our brand new Sam Patch Grocery Store, or call 800-247-6332. In Montana, you can purchase them at the Corner Cenex in West Yellowstone or the West Yellowstone Chamber of Commerce, or online at <https://ols.fwp.mt.gov/>. The following rules apply to trails only

- A DOT approved helmet for those under 18 years of age
- A muffler and Forest Service approved spark arrestor

If you are traveling on any State or Federal roads (This includes Idaho Department of Lands, Bureau of Land Management, U. S. Forest Service, Idaho Department of Parks and Recreation, Idaho Department of Fish and Game, and privately owned roads open to OHV use!), you can add to the above:

- A valid drivers' license OR an OHV Education Certificate for forest service roads only and supervised, with strict guidelines, by an adult
- Liability Insurance

And, on city and county roads, you can add:

- Must have a valid drivers' license
- License plate
- Brake light
- Head light/tail light
- Audible horn at 200 feet
- Mirror showing roadway 200 feet behind
- Passengers are legally not allowed unless designed to carry one



Once you are ready to ride, pick your course! We have hundreds of miles to ride, but be aware, some of our trails are rated for size, so be sure to check your map twice if you are over 50" in width to make sure you can navigate the terrain. Don't forget, cross country travel off trails in both Montana and Idaho is prohibited, and there are NO motorized vehicles allowed in wilderness areas. Forest service roads and trails are 35 MPH unless otherwise posted, but there is quite a bit of that country that isn't safe to ride at those speeds, and be sure to carry the appropriate gear for sudden weather changes, have a first aid kit, and emergency equipment including a tow rope and safety gear. Know where you can cross Highway 20, and where you cannot, and when you do cross, be sure to cross at a 90 degree angle!



ATVING is all about riding safe and by using hand signals it will let other ATVERS know what you are doing .

On coming ATV Hand Signals

1 atv 2 atv's 3 atv's 4 atv's 5&up atv's The last ATV in the group

When passing another group it is best to warn others on how many are left BEHIND YOU. For 5 or more, hold up all 5 digits. For 4 BEHIND YOU hold 4.

If you are the last or riding solo hold up your fist.

Be safe out there!

Above all else, while you are here to recreate and enjoy yourself, please be courteous! Remember, you share the trail with many others, horses spook easily, slow down when passing them, your vehicle kicks up dust and mud, slow down when passing those on foot or bike. When traveling through residential neighborhoods to get to your trails, go slowly, don't rev your engine or play your music too loudly. If you pass through a gate, leave the gate as you found it, close it if you opened it, leave it open if you found it that way.

Have fun and be safe!

If you want to read further, or would like to know how the funds from your Idaho recreational stickers are put to use, go to: thecalderatimes.com/atv-and-ohv-idaho-rules

Open Year Round

Restaurant

Breakfast Fri- Sun 8am-11am

Lunch 11am-5pm

Dinner 5pm-9pm

Tavern

Full Bar w/ Patio Seating

Pool Table

Shuffle Board

Lodging

Cabins

Motel Rooms

Campground

C-Store

Cold Beverages

Clothing

BBQ Supplies

Gifts

Miller Ranch Beef

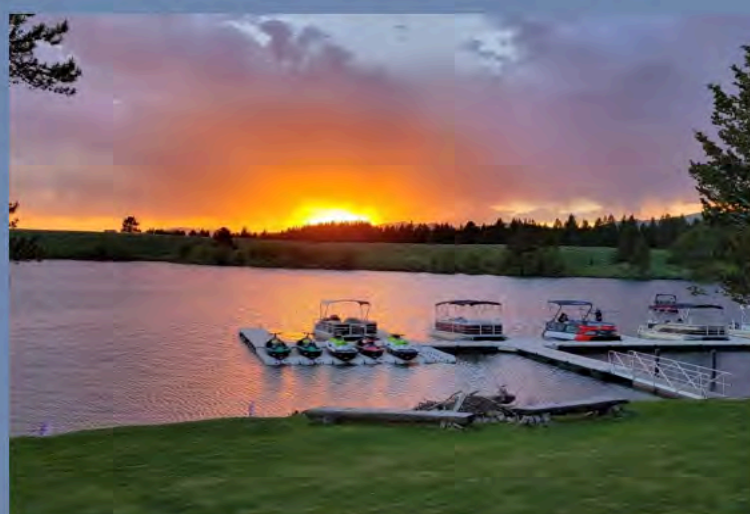
Lakeside Rentals

9am-5pm

Reserve your rental online today!



208-558-9770



UPCOMING EVENTS

June 28th & 29th - Unknown Band 8pm

July 4th-6th - Satin Steel 8pm

July 4th - Fireworks 10pm

July 12th & 13th - Kip Attaway 8pm

July 19th & 20th - Aaron Ball Band 8pm

July 20th - Fireworks 10pm

July 27th - Perfect Chaos 8pm

August 3rd - 208! 8pm

August 10th - OCD 8pm

August 17th - Dalton Dummer 8pm

August 24th - Perfect Chaos 8pm

August 30th & 31st - Satin Steel 8pm

We Proudly Serve
Idaho Grown
Miller Ranch Beef



www.lakesidelodgeandresort.com





OutBack Realty

Call Us Today!

Your Premier Office

(208) 558-9500



Jamie Phillips
208 221 2647
Broker



Jackie Jensen
208 390 8303
Realtor



Riley Hoyle
208 351 6705
Realtor



Monika Boyce
208 240 2717
Realtor



Christie Cameron
208 351 0816
Assoc Broker



Gay Johnson
208 351 5204
Realtor



Gary Dawson
208 351 3054
Realtor

www.outbackrealty.com ~ www.islandparkrealestate.com



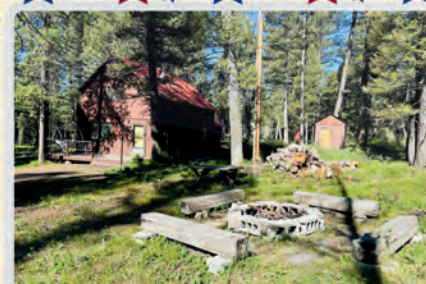
STONEGATE \$799,900
3 BED / 2 BATH / LG GARAGE
LANDSCAPED / FURNISHED



ISLAND PARK VILLAGE \$529,900
3 BED / 2 BATH / 1 LEVEL
STR POTENTIAL / FAIRWAY 4



TWO TOP EST \$950,000
4 BED / 3 BATH / LG GARAGE
2 ACRES / FURNISHED



YALE CREEK SUB \$430,000
NICE TREED LOT / FIREPIT
2 BEDROOM / 1 BATH



HUCKLEBERRY \$936,000
3 BED / 2 BATH / GARAGE
3.17 ACRES / NO HOA



MACKS INN \$449,000
2 BED / 1 BATH / .50 AC
GREAT STR POTENTIAL



ASPEN RIDGE \$899,900
VIEWS / CURRENT STR
CLOSE TO YELLOWSTONE



COMMERCIAL/ \$1.2M
1.7 ACRES
BOONDOCKS RESTAURANT



SHOTGUN WEST
2 BED / 1 BATH / 1 AC
FURNISHED / STR POTENTIAL



RED ROCK \$1,250,000
47.16 ACRES / BACKS F.S.
FANTASTIC VIEWS!



LAST CHANCE - \$3.49M
LAUNDROMAT
10 HOTEL ROOMS / 4 CABINS



LAST CHANCE
PRICE STARTING AT \$329,000
11 FOR SALE 2 BED / 1 BATH

STONEGATE \$199,900
3.51 AC BUILDING LOT
GREAT YEAR ROUND ACCESS

CENTENNIAL SHORES
WATER VIEW / 1.4 ACRES
\$325,000 ~ COMM WATER

SAWTELLE MTN
.7 ACRES ~ STR ALLOWED
TREES ~ \$239,900

SILVERHAWK \$375,000
BACKS F.S. ~ STR ALLOWED
PRIVATE BOAT DOCK

Electric

208-351-7058

Electrical Contractor

Serving all of Southeast Idaho

ISAAC WALKER
OWNER

CALL OR TEXT FOR A QUOTE

☎ 208.243.0049

✉ CLEARDIAMONDWINDOWS21@GMAIL.COM



CLEAR DIAMOND
WINDOW CLEANING

Island Park
Builders Supply
558-7552

4108 S Big Springs Road
Macks Inn, Idaho 83433

ISLAND PARK
ELECTRIC



Restaurant

Breakfast Fri-Sun 8am-11am

Lunch 11am-5pm

Dinner 5pm-9pm

Tavern

Full Bar w/ Patio Seating

Pool Table

Shuffle Board

We Proudly Serve Idaho
Grown
Miller Ranch Beef



Lakeside
Lodge

Come Live the Mountain Life!



IpIdaho.com



Patty Laritz-Bithell | Patty@IpIdaho.com | (208) 860-4846



Income from Nightly Rentals - Commercial

3519 Yale Kilgore
MLS # 2157469
\$1,250,000



2 RENTAL UNITS

3771 Moose Breath Lane
MLS # 2161921
\$840,000



Lots in Buttermilk Area

TBD Totem Rd
MLS # 2161709, etc
\$199,900 Ea/lot



NEW SUBDIVISION

4920 Alpenglory Way
MLS # 2160452
\$249,000



Great Views - Two Cabins - Active Rental

3755 Bishop Mountain Dr
MLS # 2163974
\$1,755,000



YALE CREEK

4125 Ponderosa Dr
MLS # 2160382
\$225,000



4 active nightly rentals - 5+ Acres - Commercial

3555 Yale Kilgore
MLS # 2156139
\$2,000,000

BUYERS: ISLAND PARK IS BURSTING AT THE SEAMS WITH LISTINGS. CALL FOR YOUR PRIVATE TOUR TODAY!

SELLERS: I prepare a strong value proposition for potential buyers. We get the cabin in the right condition to list at the right price, then highlight your home's attributes with professional photography, drone footage, and/or 3D tours as appropriate to the market.