

Inside This Edition

Crossword	Page 2
Toy Rental Companies	Page 5
Restaurant Hours	Page 8
Fishing Report	Page 10
Local Events	Page 15

Follow us on
Facebook



The Caldera Times
Island Park, Idaho

Read for free at:

www.TheCalderaTimes.com

Have an event coming up? Hiring? Know someone who should be highlighted? Want to write to the editor?
Jen@TheCalderaTimes.com 406.209.0022

Water Conservation in Island Park Reservoir, A Local Quest

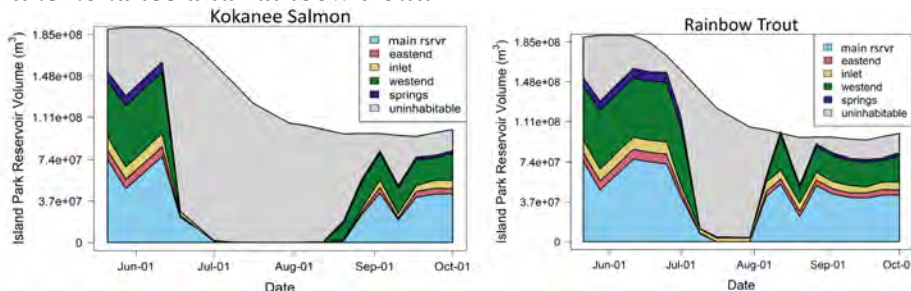
Whether you fish or recreate on Island Park Reservoir, the health of the lake is vitally important to you. Lower water levels and toxic algae blooms affect us all.

The Henrys Fork Foundation started doing some interesting research with Dr. Jack McLaren in 2021 to determine the health of the reservoir. It also provides some insight for the lower Kokanee numbers in the lake, no one caught one in the ice fishing tournament this last winter at Lakeside Lodge.

The water in our beautiful reservoir belongs to farmers downstream. The lake was, in fact, developed, to irrigate the lush ground below us. But when we have drought years, like 2013 to 2016, there isn't enough water to support both the reservoir and agriculture. When our fishery is affected that much, it can have lasting affects beyond just the dry years. 2022 was particularly brutal, it was the lowest water year on record since 1937.

Dr. McLaren put his findings in a blog on Henrys Fork Foundation website, this is what he found:

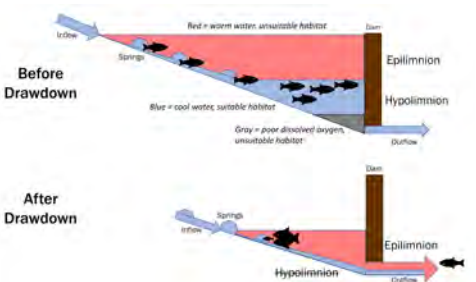
So, what's happening here? Island Park Reservoir, like all lakes, arranges itself in layers of water based on temperature. Warmer water is less dense, and floats over a layer of cold water. We call these layers the "epilimnion" (Greek for "upper lake") and "hypolimnion" (Greek for "deep lake"). The epilimnion is warmed by the sun and interacts with the atmosphere, which means it is warm but well-oxygenated. The hypolimnion is cool but it's cut off from the atmosphere; the decay of organic matter (like algae, fish, and plankton) can cause low dissolved oxygen in this layer. The "thermocline" is the goldilocks zone between the two where water temperatures are simultaneously cool and well-oxygenated. The thermocline is the area that's important for fish like kokanee and rainbow trout.



Unfortunately, Island Park Reservoir is shallow and has a very small hypolimnion, oftentimes amounting to less than 15% of the total volume of the reservoir. When the reservoir is drawn down for irrigation, the hypolimnion and thermocline is delivered out of the bottom of the reservoir through a pipe or siphon in the dam. Thus, the cool thermocline is sent downstream. The water is nutrient-rich and well-oxygenated, which benefits the Henry's Fork for a short time downstream. However, once this hypolimnion and the thermocline is eliminated, water temperatures rapidly rise as the deep, cool water is replaced by warm surface water. This warm surface water is also rich in organic material. The organic material rapidly decays, causing temporary "dead zones" near the bottom of the reservoir.

The end result? Water temperatures unsuitable for kokanee and trout creep down from the surface like a hammer, while low dissolved oxygen at the bottom creates an anvil. When the two meet, it results in an elimination of kokanee and trout habitat.

Mind you, this doesn't just affect the fishing, this is also prime conditions for the toxic algae bloom to occur, which only exasperates the problem.



Continued on Page 17

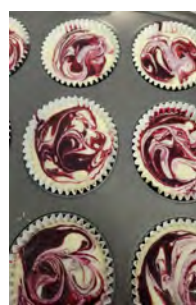
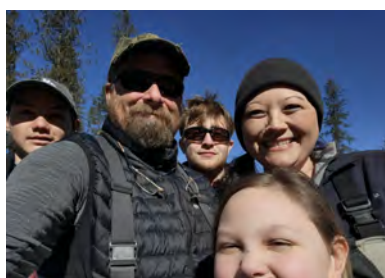
Happy Anglers: An Update!

Jennifer Ferguson and her beautiful little family have been operating the little coffee shop Happy Anglers inside Henrys Fork Anglers for about 4 years now. They have served lots of coffee, and an assortment of great breakfast food, as well as sack lunches for your daily excursion, whether that's a fishing trip, hiking, or a day in Yellowstone Park.



This year, Jenn is going a different direction. While many of us mourned the appeared loss of this great little shop when her announcement showed up on Facebook, you can all be relieved. The entrepreneur in her is working on a food truck and a location!

A diligent search of the Last Chance area for a place to park it continues while moving forward with the purchase. A griddle, oven, fryer, and upgraded coffee machine are all on the list of included appliances so she can continue serving up great morning food and our caffeine fix! Boxed lunches will, as always, be on the menu for your afternoon excursions!



In the meantime, Jenn is still offering catering for your special events. On June 14th, she will be at Trout Hunter for the ranch opening with The Friends of Harriman State Park! If you have a special event going on, reach out to her and see what could be on your menu.

A quick call can also confirm your delivery of fresh out of the oven, mouth watering baked goods for your special occasion, or just because. Jenn has offered this service previously, and intends to continue that moving forward.

All of this to say, do not despair Island Park! Happy Anglers is not gone, just moving forward. Call Jenn anytime for catering or baking needs at 208-497-9455, and watch for the new location.

Crossword

ACROSS

- 1) BBQ side
5) Chowder morsel
9) Pelted on Halloween, say
14) Garr of "Tootsie"
15) Leslie Caron title role
16) Alfalfa's heartthrob
17) The Bard's stream
18) Somali supermodel
19) Toaster's need
20) Magic 8 Ball reply
23) Cross-referencing word
24) Rudder locale
25) Bocelli offerings
27) Sancho's mount
28) Wimbledon do-over
30) Caked-on dirt
32) Jobs or Wozniak
35) Ned who composed "Air Music"
37) ___-friendly ("green")
38) "Don't worry"
- 41) Game with "Draw Two" cards
42) Ice cream measures
43) All the "noble" elements
44) Uncle ___ Rice
46) Windows forerunner
47) Wolf Blitzer's network
48) Esther of "Good Times"
50) Not worth a ___
51) Menu phrase
54) Paul McCartney hit
58) Samuel of the Supreme Court
60) Pride Lands sound
61) Sport for behemoths
62) Put one over on
63) Saddlers' tools
64) Swift horse
65) Still-life pitchers
66) Black Friday event
67) Seahawks coach Carroll

EQUIVOCATION

1	2	3	4		5	6	7	8		9	10	11	12	13
14					15					16				
17					18					19				
20				21						22				
23				24						25			26	
			27				28	29			30			31
32	33	34				35				36		37		
38					39						40			
41					42					43				
44			45		46					47				
	48			49				50				51	52	53
		54				55	56				57			
58	59					60					61			
62						63					64			
65						66					67			

DOWN

- 1) Hangs in there
2) New Orleans embankment
3) Sprang up
4) Chimes player
5) Dover landmarks
6) Put a cap on
7) Astronaut Shepard
8) Smaller than compact
9) Landscaper's tool
10) Of the French
11) Morally ambiguous situations
12) Ernie of the PGA
13) Some "Law & Order" figs.
21) Cut some slack
22) Idaho, e.g., informally
26) A Bolivian capital
27) "Selma" director DuVernay
28) Artists' studios, often
29) Libidinous god
31) Monastic titles
32) Cold shoulder
33) Copier need
34) Be frugal
35) Alternative to Vegas
36) Big champagne bottle
39) Half a cassette tape
40) Office PC connection
45) Christian of "Bobby"
47) Like a rasp
49) French cathedral city
50) Pint-sized
51) Sky hue
52) Paul of "American Graffiti"
53) InDesign software company
55) Timeline segments
56) Caucus state
57) CEO's "Pronto!"
58) The Red Baron was one
59) First gear



- Local Agents
- Local Office
- Best Results

Call for your **FREE** Market Analysis on your cabin or lots



Rod JONES

THE DIFFERENCE BETWEEN LISTED & SOLD

(208) 313-0000

EVERYTHING we touch turns to **SOLD!!**

IDAHO'S REAL ESTATE

Find the Best Cabins & Lots At

www.IdahosRealEstate.net

Want yours sold?

Call us!



"Idahos' Jewell"

(208) 241-7769

Yellowstone Love Story

By Lori Nuss

This was my mom, Bunny. In the summer of 1952, she rode the train from Minnesota with two friends to Yellowstone on their break from college.

The summers of 1946 through 1952 my dad Dale Nuss was a young seasonal ranger in Yellowstone. He met Bunny by going for coffee at the Mammoth Terrace Grill where she worked. Within weeks they had fallen in love early in the summer. August came and Bunny had to leave for school just as my dad accepted a permanent Ranger position in Shenandoah National Park in Virginia.



Bunny left Yellowstone for Minnesota and Dale to Virginia. They wrote letters to each other almost daily. Dale missed Yellowstone and Bunny and knew he belonged in Yellowstone. Young Dale had spent his summers in the park from the age of six. His dad

(also named Dale) owned and operated a boy's summer camp in Yellowstone from 1928 to 1958.



In August 1953, not even a year after arriving Shenandoah, Yellowstone's Chief Ranger Otto Brown transferred Dale back to Yellowstone with a permanent ranger assignment. On his return to Yellowstone, he stopped in MN to ask Bunny's father for Bunny's hand in marriage.

On February 20th, 1954 they were married in Minnesota and the next day they began



They lived in Yellowstone year-round until 1980 when my dad retired from the National Park Service.

Along the way came my brother Stuart, my sister Cara Lee and me! Stu and Cara Lee went on to have NPS careers... I chose another career path, but my heart also still lives in Yellowstone, just as my dad's did.

Lori Nuss
The REAL Yellowstone©
406-581-0851
lorinuss@me.com
www.therealyellowstone.com



Island Park's Newest Little Souvenir Shop With The Biggest Heart

Ready to take home your unique souvenir or gift from your visit to Island Park? The brand new Island Park Souvenir and Gift Shop is open! Located at 3519 Yale-Kilgore Road, our littlest shop with the biggest heart offers a wide range of specialty and on-of-a-kind items to commemorate the memories you make in our beautiful area.

Whether it's a t-shirt, hat, postcard, or trinket, we have something for everyone. Friendly staff will be on hand to help you find the perfect gift or keepsake to bring home.

Why wait? Come see us online only for now, at www.IslandParkSouvenirs.com, and take home your piece of Island Park. Can't wait to see you!



McCLOUD SERVICES

Excavation - Plumbing - Utilities
Gravel - Roadbase

208-223-2382
flintmccloudconstruction@gmail.com

Boating Season: Do's and Don'ts

For those of you who are visiting our piece of heaven, please help us preserve it by doing the same. Make sure your boat is clean of any parasites before launching, and be aware, that an invasive species sticker is required for ANY boat you are launching under 10 feet in length. This includes kayaks, paddleboards, and inflatables. You can purchase those at Robins Roost for \$30 if you're motorized and \$7 if you're non-motorized. If you're curious about the program, or the rules, visit idfg.idaho.gov/info/boat-stickers.

Summer is definitely for kids, and on the water is often their favorite place. If they are 14 years of age or under, playing on a kayak or paddle board of any kind, they must be wearing their life jackets, 14 and over must at least have them on board. If the kayak or paddle board is over 10 feet, it must also have an invasive species sticker on it. And both groups are required to carry a whistle by Idaho law.

There are way to many boating rules and regulations to list here, but, if your new to boating in Idaho, or think you need a refresher course, you can find the entire Idaho handbook for boating laws and responsibilities here assets.kalkomey.com/boater/pdfs/handbook/idaho-handbook-entire.pdf.

Now a few of the standard items we know we are supposed to have on board, but we sometimes get caught without:

- 1 coast guard approved life jacket on board per each person on board and accessible
- If your over 16', a ring buoy or cushion you can throw (Type IV flotation device)
- Fire extinguisher
- Sound producing device
- And if you're traveling at night, navigation lights

If you are a ski boat, or a wake surf boat there are a few more!

- It takes 3! If you are towing anyone, tubing, skiing, surfing, waking, you must have a spotter.
- A flag, not just on board, but it's up if there's a person in the water!
- There is a no wake zone within 100 feet of a dock, structure, or person in the water! Too often boats go right on past someone in the water too fast, caution is order, lives are at stake.
- Operating at night is prohibited without the proper combination of lights installed by the manufacturer.

Wakes. These are a bone of contention! Home owners around the lake have invested thousands and thousands of dollars in their docks and shorelines. I'm a surfer, and a dock owner, I'm well aware and cognizant. In Idaho, anywhere within 100' of the shoreline is a 5 mile an hour, no wake zone area, however, this is likely not far enough for a surf boat under ballast, consider 200' to be polite. There are plenty of places on the lake to surf without causing damage to other peoples property, so be aware, and please move away. Many lakes and rivers have banned this activity all together, and many states have legally increased that no wake zone to 200'. **There are already people advocating for a 700 ft wake zone on Island Park Reservoir, that will kill our sport here, PLEASE be aware of where you are!**

Jet Skiers, we all know you like the wake behind our boats. We do put up a nice wave to jump and play in. The law says 100 feet behind the boat, that's the closest safety zone for the surfer, skier or boarder. Enjoy yourself, but keep your distance! It is the life of the person being pulled behind the boat you are risking, and often times it is a child.

Lastly, open containers are allowed on boats. But the same rules apply to drinking and driving a boat as to any other vehicle! .08% boys and girls, gets you an OUI, which can carry a maximum fine of \$1,000 and a sentence of up to 6 months in jail. About 40 boat operators a year are arrested in Idaho for OUIs. Other stressors on a boat, including sun, motion, and wind, intensify alcohol and its reaction, think before you drink!



Christie Cameron
Year Round Local Realtor
208-351-0816
Christiecameron7@gmail.com
Associate Broker

OUTBACK REALTY
4135 Sawtelle Peak Road,
Island Park, Idaho 83429



Aspen Ridge Rental
3120 sq ft, Mountain Views,
\$899,900



Last Chance/Douglas Dr
RV lot, build rental cabin,
No HOA, Sewer paid.
\$115,000



Red Rock Rd
47 acres - Borders Forest
Service - near Henry's Lk
\$1,250,000



Macks Inn
Water, power, sewer, well
house, bunkhouse, 3RV
hookups \$299,000



Last Chance Rental
5.46 acres - 4 bedroom
suites, 5 bath
\$1,350,000



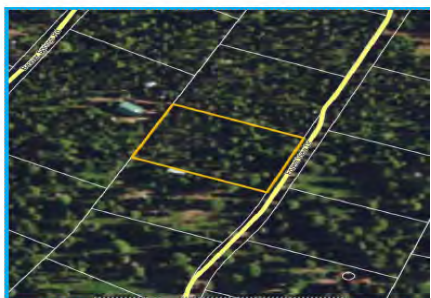
Ashton
.45 of an acre, shop and
single wide, corner lot
\$179,000



Rancho McCrae
Waterfront
Log home, 3 bed, 2 bath,
28x24 garage, dock
included
\$1,350,000



Yale Creek
1.75 Acres, Has septic and
power, no covenants
\$199,900



Yale Creek Lot
.88 acre
Camper lot #38
\$130,000



LAKESIDE RENTALS

Island Park Reservoir



208-558-9770

SEA-DOO can-am ski-doo

Equipment Rental Island Park

Lakeside Lodge

3857 Lakeside Lodge

208.558.9770



UTV/ATV

Defender 6 seat \$429

Commander 4 seat \$399

SeaDoo

Spark/Trixx \$299

GTX PRO 130 \$359

Boats starting at \$495

1 up Kayaks and Paddle Boards \$ 50

2 up Kayaks \$ 80

E-Bikes \$ 85

** All prices are for full day 9 am to 5 pm

***Price does not include fuel or damage deposit

Island Park Adventures

3342 N Hwy 20

208.558.7581

UTV/ATV

Defender Max Limited \$599

Defender Max \$477

Commander Max \$457

Maverick Trail \$357

Outlander Max \$306

Outlander \$266

***Helmets are included with rentals

Sea Doo

Sea Doo Spark 3-UP \$300

Sea Doo GTX 3-UP \$400

***Lifejackets are included with rentals

***ALL rental pricing includes insurance

Will soon relocate to 4150 N Big Springs Loop

High Mountain Adventures

4141 Sawtelle Peak Rd

208.558.9572

Tuesday to Saturday 9 am to 3 pm

RZR Trail 900 50" \$299

RZR XP1000 2 Seat \$329

RZR XP1000 4 Seats \$399

RZR Xpedition 5 \$529

RZR Pro 4 Seat \$499

Kayak \$ 39

Triple Kayak \$ 60

Raft \$99/\$150

Paddle Board \$ 49

Float Tube \$ 25

Discounts for multi day rentals and multiple machine rentals



TARGHEE TRAIL RIDERS

ISLAND PARK, IDAHO

This group is open to anyone that shares a love of this area and the trail systems. Email us at TargheeTrailRidersIslandPark@gmail.com to join. We have a Facebook group called Targhee Trail Riders Island Park Idaho where information regarding upcoming events and important announcements will be posted. *Please join today!*




FUGOWEE SNOWMOBILE CLUB

ISLAND PARK, IDAHO

Join one and all, feel free to join both clubs. Both are supportive of the trails and the sport, and both will help maintain and keep our trails open.

Call or email:
Kent Bateman
ksb1@blackfoot.net
208-715-1582

Recreation Maps



Scan to download the Avenza Map App. Create an account, it's free. Find the Island Park Motorized Recreation Map, both North and South for all of the Island Park area. They also have a Caribou-Targhee National Forest Ashton-Island Park Ranger Districts Winter Recreation for a small fee. Find your trails and enjoy yourself. Please, don't forget, cell coverage here is difficult in most areas, don't count on it for your navigation. Use a paper map, or download your map to be sure you can use it.



Monika Boyce

ISLAND PARK REALTOR

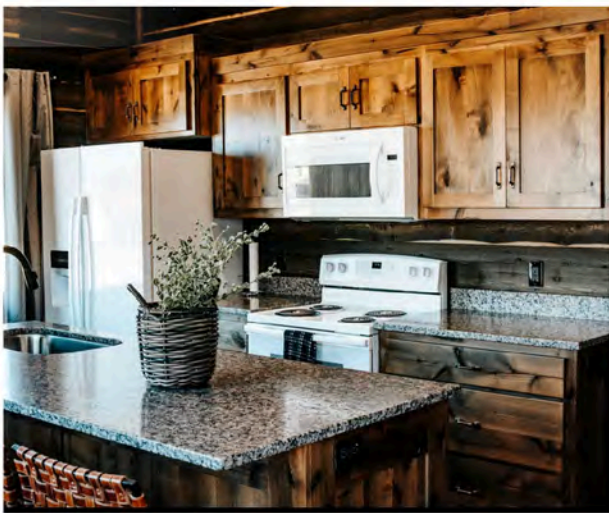
Outback Realty
4135 Sawtelle Peak Rd
Island Park, Idaho 83429
(208) 240-2717
monika.outback@gmail.com
Se Habla Espanol



14.5 BATH/ 18 BEDS



FULL LAUNDROMAT



FULLY FURNISHED
ROOMS & CABINS

3762 PINION DR. ISLAND PARK IDAHO 83429







Integrated Wellness, LLC
208-549-9970

Melissa Child
PhD, MSW, LMSW

Mental Health Services
in Island Park or via Telehealth

IP Optics LLC
est. 2023



TROY ERICSON
Call/Text
208.965.1477

IPOpticsLLC@gmail.com

REAL ESTATE/SHORT TERM RENTALS
3D Tours & Photography

BEAR ENCOUNTERS: WHAT TO DO

Forget the nursery rhymes or color-based reactions -- YOUR reaction should be based on the BEHAVIOR of the bear, not the species.



BEAR BEHAVIORS
Constant pursuit
Very quiet
Head low
Seems focused on YOU and where you are

WHAT'S GOING ON
Bear is potentially seeking a food reward (food conditioned) or you (predatory). THIS IS A VERY DANGEROUS SITUATION!

YOUR BEST REACTION
Have bear spray ready! Let the bear know YOU are in CHARGE. Group up with others near you, act large, aggressively yell, try to get the bear to leave



BEAR BEHAVIORS
Vocal and nervous
Popping jaws or lips
"Huffing" at you
Short bluff charge
Swats the ground

WHAT'S GOING ON
You're in the bear's space and making the bear very nervous. It is trying to tell you to back up and go away!

YOUR BEST REACTION
Have bear spray ready! Let the bear know you are NOT a THREAT by slowly backing up. Get out of their space and go away. DO NOT TURN AND RUN.



BEAR SPRAY
A simple tool that may save your life! Learn how to use it and ALWAYS carry it in bear country!



Christi Spinner


208-604-2153

Serving Island Park & All of South East Idaho








3795 Taylor Mountain

Luxury living with rustic charm new build in Centennial Shores. Gated waterfront community, fully furnished & turn key. This cabin boasts 360 Lake & Mountain views, 5 beds, 5.5 baths (2 masters), fully landscaped yard front& back, granite throughout, custom cabinetry heated bath floors, forced air heat & AC, huge shop w/full apartment above. Very short walk to one of 3 private Island Park Reservoir accesses. Year around access.

MLS#2158106 **\$1,888,000**



5085 Trumpeter

Stunning cabin in a secluded and quiet lake front subdivision on Henry's Lake. Very successful Vacation rental, fully furnished & sold "Turnkey". Take in the most beautiful lake, mountain, & sunset views, perched on a manicured corner lot, beautifully landscaped, firepit area, room for RV & huge deck wrapping the home. Large open kitchen, dining and living room for gathering & entertaining, attached heated garage for all the toys. World renowned fishing.

MLS#2157924 **\$1,365,000**



3760 Cove Ct

Beautiful **WATERFRONT LOT** in gated Centennial Shores Subdivision. Outstanding Centennial Mountain, Island Park Reservoir, and unobstructed sunrise and sunset views. Allows for Vacation Rentals & Guest House in Addition to Main House. One of the last remaining!

MLS#2153167 **\$749,000**



Shadow Ridge Subdivision

In Ashton, Gated Community, creek front lot, no short term rental allowed, Walking distance to World Class Fly Fishing, Year Around Access. Borders Public Land. 4376 Granite Ridge, 5.5 acres

MLS#2162869 **\$249,000**



3824 Bills Loop N.

Waterfront oasis, complete Island Park package! ¾ acre wooded lot, private dock, lake front deck, easy year round access in secure gated community. Waterslide, firepit, 30x24 shop, covered front porch & back deck. Perfect summer lake house, residence, or vacation rental. Fully furnished "turn key". Interior updates include tiled baths and kitchen, incredible rocked floor to ceiling propane fireplace, pine tongue and groove throughout, hardwood floors. Beautiful furnishings and finishes with rustic elegance & charm. Come see, life is better at the lake!

MLS#2164896 **\$1,199,000**



Shadow Ridge Subdivision

In Ashton. Gated community, creek fronts lot. No Short Term Rentals Allowed, Walking distance to World Class Fly Fishing, Year Around Access. Borders Public Land. 1670 Shadow Loop South 1.7 Acres

MLS#2163861 **\$224,900**



3797 Taylor Mt

Ultimate family gathering place, fully furnished. Just under 4600 sq ft, boasts 7 private bds, including main floor master and 3 ensuites. 6 full baths w/Custom tile work. Layout for entertaining, comfort & fun. Backs to 30+ ac of green space. Double sided rocked propane fireplace, new jacuzzi hot tub, decks with mountain and lake views, granite, & game room. Gated lakefront community, access to boat launches with vinyl docks, grassy park, pavilion & firepit areas right on the lake. Ride ATVs in the summer and snowmobile in the winter leaving directly from property to access 700+ miles of trail systems. Year round access & incredible vacation rental permitted for 30 person occupancy. Room for a garage & subdivision allows a guest house.

MLS#2164890 **\$1,987,000**



4124 Lariat Way

Hand Hewn log cabin in the woods built by famous Johnny Sack. Nestled on 5.3 wooded acres with miles of great Views, seclusion & privacy. Cabin has been fully restored with so much charm & character. Boasts custom wood work & tile work in all baths, spacious updated kitchen, new flooring throughout. Bonus room w/ loft, outbuildings, concrete apron & walkways, energy efficient zonal cadet heating, new water heaters & majority of electrical/plumbing systems are new. Fully furnished and borders 1 Million acres of Caribou National Forest, BLM, & state land.

MLS#2165007 **\$879,000**



Ice House Creek

6.39ac lot with Ice House creek frontage, perfect amount of forest, creek, with Teton & Island Park Reservoir views, Has water connection, power, fiber, septic approved & building plans available. Perfect building lot, flat with clearing to build, wooded for privacy, & year round access. Allows for livestock and vacation rentals. Power & phone are to the lot, property markers are in place. Come build your dreams!

MLS#2164601 **\$299,000**



ISLAND PARK



ELECTRIC

4108 S Big Springs Road
Macks Inn, Idaho 83433



208-351-7058

Electrical Contractor

Serving all of Southeast Idaho

ISAAC WALKER
OWNER

CALL OR TEXT FOR A QUOTE

208.243.0049

CLEARDIAMONDWINDOWS21@GMAIL.COM



CLEAR DIAMOND
WINDOW CLEANING



**DAD'S CONSTRUCTION
AND SERVICES**
208-932-3152 OR 208-380-4967

- **Trash Service**
Weekly pick up
Bear proof containers
- **Dumpster rental**
7 x 14 x 4 Bins
\$200/wk + \$100/delivery + dump fee
- **Equipment rental**
Forklift
\$210/day
*call for discounted long term pricing



THINKING OF SELLING?
GIVE ME A CALL!



ISLAND PARK REAL ESTATE
CONSULTING
BUYERS AND SELLERS
PUT MY KNOWLEDGE TO
WORK FOR YOU!
COMMERCIAL,
RESIDENTIAL AND LAND

JACKIE JENSEN
208-390-8303

I LIVE IN ISLAND PARK YEAR-ROUND
AND HAVE A LOCAL OFFICE
OUTBACK REALTY

Upper Snake River
Region Fishing Info

To fish in Idaho any person 14 years of age or older must have a valid fishing license.

- *Idaho resident Anglers younger than 14 do not need a license and have their own limit.
- *Nonresident angler under 14 must be with someone who has a valid fishing license and their fish are included in the license holders unless they purchase their own separate license.

Special fishing permits are needed for some activities for both residents and nonresidents:

- *Fishing for salmon and steelhead
- *Fishing with two poles.

Purchase your license at one of the following:

- *Online at idfg.idaho.gov/buy
- *Or the following local locations:
 - Elk Creek Station (Near intersection of Hwy 20 & Yale-Kilgore Rd)
 - Sam Patch Grocery (Near intersection of Hwy 20 and Sawtelle Rd)
 - Lakeside Lodge (On the reservoir at the end of Buttermilk Rd)

For a full list of regulations, open waters, and limits, visit:

TheCalderaTimes.com/upper-snake-fishing-regs

Caldera Restaurant Days and Hours		
<u><i>The Bighorn Bar & Grill</i></u>		
14355 Hebgen Lake Rd	Daily 11 am - 10 pm	406.589.8513
<u><i>The Grill @ The Blue Buffalo Resort</i></u>		
3402 N Hwy 20	Tuesday - Saturday 11 am - 6 pm	208.220.7896
<u><i>Cafe Sabor</i></u>		
4298 Hwy US-20	Wednesday - Saturday 11 am - 9 pm Sunday 12 pm - 8 pm Closed Monday and Tuesday	208.558.9300
<u><i>Connie's Restaraunt</i></u>		
4130 Quakie Lane	Sunday, Monday & Thursday 11 am - 9 pm Friday & Saturday 11 am - 10 pm Closed Tuesday & Wednesday	208.558.6987
<u><i>Happy Hour Bar & Grill</i></u>		
15400 Hebgen Lake Rd	Monday, Tuesday & Wednesday closed Thursday - Saturday 12pm - 11 pm Sunday 11 am - 11 pm	406.646.7281
<u><i>Lakeside Lodge</i></u>		
3857 Lakeside Lodge Lane	Daily Lunch 11 am - 5 pm Dinner 5 pm - 9 pm Bar 10 am - Close	208.558.9770
<u><i>Meadow Creek Lodge</i></u>		
Meadow Creek Road	Open Fathers Day 1 pm - 4:40 pm or until food is gone Regular Hours begin Jun 17 Friday - Sunday Breakfast 8 am - 11:30 am Lunch 11:30 am - 3pm	208.351.2787
<u><i>The Parlor at Mack's Inn</i></u>		
4169 N Hwy 20	Sunday - Thursday 11 am - 9 pm Friday & Saturday 11 am - 10 pm	208.558.2450
<u><i>Pond's Lodge</i></u>		
3757 Hwy 20	Sunday - Thursday 11 am - 9 pm Friday and Saturday 11 am - 10 pm	208.558.7221
<u><i>Springhill Suites Island Park</i></u>		
4292 N Highway 20	Daily Drinks @ 4 pm, Dinner 5 pm - 10 pm	208.558.2400
<u><i>Subway</i></u>		
4141 Sawtelle Peak Rd	Monday - Saturday 8 am - 3 pm	208.558.9884
<u><i>Phillips Lodge- The Lodgepole Grill</i></u>		
3907 Phillips Loop	8 am -8 pm Closed on Wednesdays	208.558.9379
<u><i>Trouthunter-Last Chance Bar & Grill</i></u>		
3327 Hwy 20	Breakfast 7 am - 11:30 am Lunch 12 pm - 2:30 pm Happy Hour 4 pm - 5 pm Dinner 5 pm - 10 pm	208.558.8006

Summer Horse Back Riding

A great family activity that most folks don't get to partake in at home is horseback riding through the mountains. It's a pleasant way to spend part or all of your day! We have cowboys ready, willing, and able to take you on a scenic day trip.

Dry Ridge Outfitters are a unique local brand! They have been guiding horse rides in Idaho as a family for over 70 years, and most of their string of horses are born right on the ranch, raised and trained by them. These Cowboys will take you through some of the most beautiful parts of Harriman State Park, and can tailor the ride to your group size and needs. To learn more visit DryRidgeHarriman.com/horse-rides.

Yellowstone Horses at Eagle Ridge Ranch offers a wide variety of options for day trips. Mid May through mid September, Monday through Saturday, these good folks offer morning trips, afternoon rides, and evening outings paired with a western cookout dinner. All are available to choose and book at their website here Yellowstoneworld.com/schedule-rates/.

Diamond P Ranch is on the way to West Yellowstone, but is the only outfitter west of West Yellowstone in Montana with permits to guide horseback rides into the Gallatin National Forest. You can book morning, afternoon or evening rides for an overlook into Yellowstone National Park and the Continental Divide, or check for a private ride. More information can be found at TheDiamondPRanch.com/rides/.

Creekside Trail Rides might be the place to go if you want a shorter ride, or a wagon ride. One hour horseback rides start at 9:30 am, run through 5 pm Thursday through Saturday and walk- ins are welcome. You can schedule your ride here through Westyellowstonerodeo.com/creekside-trail-rides.



Annual Fun Run and Marathon Dates

If you enjoy these kinds of events, there are several in our area you might consider signing up for.

June 7th & 8th is **Yellowstone Half Marathon and 5k**, where you will start the course on Airport Road in West Yellowstone, This trail climbs into the woods and has views of the Gallatin National Forest, and potential wildlife sightings. For more information, or to sign up, go to <https://www.vacationraces.com/half-marathons/yellowstone>.



July 6th is the **Annual Island Park Sawtelle Fun Run**, which is a benefit for The Island Park Community Trail Project was a concept taken into reality by the Ashton/Island Park Ranger District and the All-American Sawtelle Fun Run Committee. Their goal was to establish a non-motorized route to connect Harriman State Park to Henry’s Lake using existing National Forest System trails identified as key connectors for the proposed routes to provide non-motorized opportunities for visitors, guests and locals who seek this type of outdoor recreational experience. The completion took the combined efforts and contribution of funds from the annual All-American Sawtelle Stampede Fun Run and the many dedicated volunteers who have graciously committed their time & labor. You can find more information, or register to participate at IslandParkSawtelleFunRun.com.

July 20th is the **Mesa Falls Marathon**, rated the best Idaho marathon by runners. If you have not run this before, this is an amazing course. USA Today, in a 2013 article, listed it as one of the Amazing Races to Run before you die. With a starting elevation of 6135 ft, the course features a blend of running surfaces from blacktop and pavement to packed trails along Warm River, running generally downhill to a finishing elevation of 5253 ft. Spectacular views of Targhee National Forest, Teton Mountains, Lower Mesa Falls on the Henry’s Fork of the Snake River, and Warm River all combined with the beginning terrain of sagebrush and evergreens ending in flowing farm ground provide a breathtaking backdrop. For more information or to register to to MesaFallsMarathon.com.

August 3rd & 4th is **Yellowstone Trail Race**. You don't want to miss this spectacular trail run just outside of Yellowstone National Park! The West entrance and gateway to Yellowstone National Park is surrounded by three national forests, blue-ribbon trout streams, and beautiful mountain lakes. Come run a 50K, 25K or 10K trail run with breathtaking scenery that takes place right outside the world's first National Park on the trails of Custer Gallatin National Forest. All races are on both Saturday and Sunday. More information here: runsignup.com/Race/MT/WestYellowstone/YellowstoneTrailRace.



Summer Rodeos



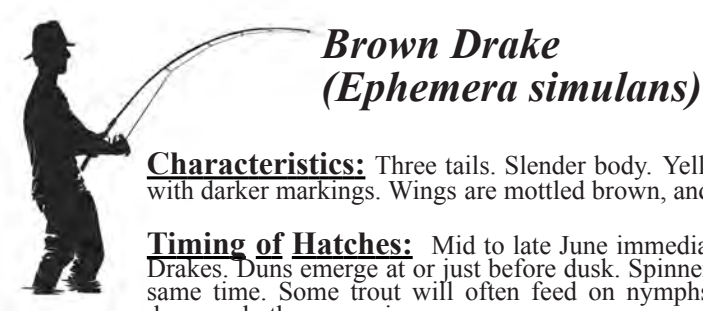
Who doesn't love a summer rodeo? The smell of horses, the thrill of the ride, watching that rope swing just right. It's always been a favorite. There are some fantastic options most nights of the week throughout our summers here in the Caldera!

One of the favorites is **Meadow Vue Ranch**. This is a summer youth horse camp that invites the public two nights a week to show off some of the skills they have learned. After starting off with the rodeo events such as bull riding, saddle bronc riding, bareback riding, barrel racing, pole bending, roping, kids calf riding, and the calf scramble, they rustle up dinner featuring hand cut fire grilled steaks, dutch oven chicken, dutch oven potatoes, baked beans, corn salad, coleslaw, cornbread, biscuits, and peach cobbler and ice cream for dessert. Entertainment during dinner is cowboy songs, old and new, by Fall River Boys, and after dinner stay and enjoy the music, and the scenery of Henry's Lake Idaho, or get up and dance, if you don't know how, they can teach you, line dance or country swing! These start June 24th and run through August 5th on Wednesday and Saturday nights. Buy tickets, or find more information at Meadowvueranch.com/rodeo-%26-dinner.

The other is the **Wild West Yellowstone Rodeo** part way to West Yellowstone in Montana on Hwy 20. Every Wednesday through Saturday from mid June to August come watch cowboys and cowgirls compete in events such as bull riding, team roping, breakaway roping, bareback riding, saddle bronc riding, and a calf scramble for the kids. For more information, or for more information go to <https://westyellowstonerodeo.com/tickets>.



Peak Fly Hatch June



Brown Drake (Ephemera simulans)



Characteristics: Three tails. Slender body. Yellowish tan to light brown with darker markings. Wings are mottled brown, and heavily spotted.

Timing of Hatches: Mid to late June immediately following the Green Drakes. Duns emerge at or just before dusk. Spinners normally fall about the same time. Some trout will often feed on nymphs or emergers, others on duns, and others on spinners.

Habitat: Very localized in the very slow sections of the Henry’s Fork in Harriman Park, the Gibbon in Yellowstone Park and other waters. Needs slow water with silt bottom.

Comments: Brown drakes are very important on the slow sections of the Harriman Park downstream to Pinehaven. They are classified as burrower nymphs. Nymphs can swim rapidly prior to emergence. The focal point of the emergence moves gradually upstream a day at a time. The overall emergence period is about two weeks. Brown drakes sometimes also emerge in the morning hours.

Patterns: Brown Drake Nymph, Emerger, Cripple, Paradrake, Mike’s Brown Drake, Brown Drake Partridge Spinner

Hook Sizes: 18, 20 & 22



Spotted Sedge Caddis (Hydropsyche)

Characteristics: By far the most important group of caddis flies throughout the season. Body is usually cinnamon brown. Wings are brownish gray with small tan spots and blotches. Legs are cinnamon brown. The larvae are net makers. Pupae swim to the surface and emerge in open water. Females dive under the surface to lay eggs. When they are finished, they drift on the surface with the current. Several species are important on the Henry’s Fork, Madison, South Fork, and other local waters.

Timing of Hatches: June through September. Most emergence occurs in the evening, but can occur in the morning or mid-day. Egg laying can occur morning or evening.

Habitat: Medium to fast water. Larvae need clean gravel to build their nets.

Comments: The Spotted Sedge produces some of best caddis fishing. During emergence the emerging pupal imitations are effective when fished just under the surface. Spent and diving caddis patterns are effective during the egg laying flights.

Patterns: Tan Electric Caddis, Tan Emergent Sparkle Pupa, Tan Partridge Pupa, Tan Spent Partridge Caddis, Tan X-Caddis, Tan E-Z Caddis

Hook Sizes: 14, 16 & 18

Pale Morning Dun (Ephemerella inermis)



Characteristics: Three tails. Light gray wings. The body is bright yellow olive to light tan or pink. Body colors vary widely according to stream.

Timing of Hatches: Early June through August. Related species can emerge well through September. Duns emerge mid-mornings and can extend throughout the day. Spinners fall in the morning and late evenings.

Habitat: Medium to fast water with gravel or rocky bottom. Very common throughout the region including all sections of the Henry’s Fork, South Fork, Madison, Firehole, and other waters of Yellowstone Park.

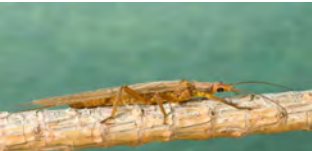
Comments: Pale Morning Duns or PMDs provide some of the finest dry fly action of the summer. They are classified as crawler nymphs. Nymphs, emergers, cripples, duns, and spinners are very important to catch the most selective trout. Spinners vary according to sex. Male spinners have a rusty body while the body color of the females is yellow olive.

Patterns: Cocktail Nymph, Barr Beadhead Emerger, Halfback Emerger, CDC Biot Emerger, PMD Thorax, PMD Captive Dun, PMD Nohackle

Hook Sizes: 8, 10 & 12



Golden Stonefly (Acroneuria, classenia)

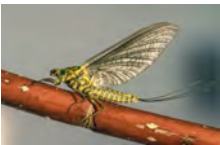


Characteristics: These large stoneflies are similar in appearance to their larger Salmonfly cousins except they are a couple of hook sizes smaller and they are lighter in color. They are a dark golden amber with a lighter underbelly. The most common species emerge along with or just after the Salmonflies. Their emergence usually covers a longer period. Another species emerges on the South Fork of the Snake in late summer and early autumn.

Timing of Hatches: Henry’s Fork - May 25 through June 30, Madison River - June 25 through July 20, South Fork - June 25 through July 20, August 15 through September 15

Habitat: Medium to fast, oxygen rich water with rocks and boulders

Western Green Drake (Drunella grandis)



Characteristics: Three tails. Dark gray wings with bright olive green body. The body quickly darkens to dark reddish or olive brown after emergence. Duns normally emerge during the late mornings. Spinners fall early in the morning. Best activity occurs on cloudy humid days.

Timing of Hatches: June into early July. The Green Drake hatch often takes place during cool spring afternoons. It can be challenging because the large flies are easy for trout to inspect in the daylight and they feed very selectively especially late in the hatch.

Habitat: Medium to fast water sections of the Henry’s Fork, South Fork of the Snake, Yellowstone, and other surrounding waters. Especially common on the Last Chance section of the Henry’s Fork and the tailwater section between Ashton and Saint Anthony.

Comments: Due to the wide distribution of the species, color variations exist from stream to stream. They are classified as crawler nymphs. The body color of the duns is considerably darker on the South Fork of the Snake. A related species, Timpanoga hecuba is common on the Lamar River and tributary streams including Slough Creek and Soda Butte Creek as well as the Upper Snake System near Jackson, Wyoming. The emergence period of this species occurs in late August, September, and early October.

Patterns:Green Drake Nymph, Hare’s Ear Nymph, Green Drake Emerger, Green Drake Cripple, CDC Emerger, Green Paradrake, Mike’s Green Drake, Green Drake Spinner, Rusty Spinner

Hook Sizes: 10 & 12

Salmonfly (Pteronarcys)



Characteristics: These are huge insects. The adults are dark charcoal with dark orange thoraxes and underbellies. The nymphs vary from dark mahogany brown to black. They take 3 to 4 years to mature from egg to adult. The nymphs concentrate near the bank and crawl out to emerge. Emergence is specifically concentrated and usually moves upriver a mile or so a day. The egg-laying adults fly clumsily over the water and many of them end up on the water providing explosive dry fly fishing.

Timing of Hatches:
Henry’s Fork - May 20 through June 10
Madison River - June 20 through July 5
South Fork - June 20 through July 5

Habitat: Medium to fast, oxygen rich water with rocks and boulders

Comments: Nymphs provide nourishment to trout on a year-round basis. There are usually 2 or 3 age classes of nymphs in the water at the same time. Trout can get totally gorged on the nymphs just prior to emergence. Trout can quickly get their fill of adults. The best tactic is to try to work the water upstream from the main emergence with nymphs. The best dry fly fishing normally occurs after the peak of the emergence is over so that trout are more focused on adults.

Patterns: Black or Brown Rubberlegs Nymph, Henry’s Fork Salmonfly, Rouge Salmonfly, South Fork Secret, Foam Salmonfly

Hook Sizes: 4 & 6

Comments: Nymphs often emerge at night or during the early morning hours. Adults don’t always have wings. Many males and some females of the late season species are entirely wingless or they have very small wings rendering them impossible to fly. These species complete their mating ritual on the bank and scurry across the water to lay eggs. Late in the summer trout lay in wait to target these large morsels as they scamper across the water.

Patterns: Tan Rubberlegs, Golden Stone Nymph, Henry’s Fork Golden Stone, Madam-X, Golden Stone Hedge Hog, Elden’s Ant

Hook Sizes: 8, 10 & 12

Getting Ready for Spring!



We're working to help build a better Island Park! Keep up with us on Facebook or our website.

MountainLifeCharity.org



ipIdaho.com



Kristen Andelin
Kristen@IpIdaho.com
(208) 360-8850



Tina Crow
Tina@IpIdaho.com
(208) 573-8304



Troy Ericson
Troy@IpIdaho.com
(208) 965-1477



Henry's Lake Community
5436 Pintail Road
MLS # 2164891
\$1,645,000



Last Chance
3422 Oakwood Dr
MLS # 2163945
\$675,000



Henry's Lake Community
3918 Lake Breeze Drive
MLS # 2163740
\$612,000



Sawtelle Area
4012 Red Fox St
MLS # 2165276
\$625,800



WATERFRONT
2780 E Pinehaven Dr
MLS # 2165065
\$1,300,000



Lot with Shop
3825 Sage Ln
MLS # 2164725
\$659,000



Last Chance
3769 Lava Ln
MLS # 2163915
\$645,000



Sawtelle Estates
4010 Coyote Road
MLS # 2163793
\$520,000

Looking to buy or sell?

Contact The Mountain Life Team
GoTeam@IpIdaho.com
(208) 534-6775



Shawna Fuller
Shawna@IpIdaho.com
(208) 731-3688



Patty Laritz-Bithell
Patty@IpIdaho.com
(208) 846-4846



Lynette Tingey
Lynette@IpIdaho.com
(208) 851-8474

First Street

PLUMBING & HEATING

Voted Best of Best
2020-21-22



www.FirstStreetPlumbingCenter.com

Service • Repair • Installation • Parts • Plumbing
Heating • Water/Sewer Line • Water Heaters
Softeners • Sewage

208-522-6896

345 1st St • Idaho Falls • Since 1942



EAST SUMMIT
EXCAVATING

SERVING EAST IDAHO
EXCAVATING, GRADING, SEPTIC

Call or Text for a Free Quote
(208) 569-6017



208-569-4763

Let Solar Scrub keep your solar panels
clean & producing optimal power
generation all year long.

We also do exterior cleaning of
businesses and homes.

Serving all of Southeast Idaho

Call us for a Free Quote



ASAP SEPTIC PUMPING

208-390-7559

Full time Septic Pumping In Island Park
Tank Locating, Digging and Inspection
for STR and Real Estate Sales Inspection

24 Hour Emergency Services

LOOK FOR THE BIG RED TRUCK

Asapumping.com



I SAW THAT

CUSTOM CHAINSAW
CARVING
TREE REMOVAL
MISC. CABIN REPAIR

AL PARKS
CALL/TEXT FOR FREE ESTIMATE
208-200-9404

Iron Dog Snowmobile Race

By Tom Bithell

The Iron Dog Snowmobile Race of Alaska. Many snowmobilers have heard of it, but there's a lot that have not. I did not know about it until maybe a decade ago when I started seeing social media clips from the race. When I started understanding the race I was intrigued. Guys - and Gals - that can snowmobile 2,500 miles across Alaska are not only great snowmobile riders, but hard core. The stamina and toughness the race demands is why it's called the World's Longest and Toughest Snowmobile Race.



The IronDog.org webpage tells the history best: *The first Iron Dog event started in 1984 and followed the Northern Route of the Historic Iditarod Trail to Nome. Since then it has had multiple incarnations ranging from 1,049 miles in 1984 to over 2,600 miles in 2021. Today's Iron Dog course*

is more than 2,500 miles, starting in Big Lake, Pro Class racers travel over the Alaska Range to the Yukon River, then cut overland toward the Bering Sea coast. Once on the coast they travel to Koyuk then to Kotzebue via the "Red Dog Loop". From Kotzebue racers head south reaching the halfway point in Nome. After leaving Nome, Pro Class Racers will reverse course to finish back in Big Lake, Alaska.

Participants cover some of Alaska's most remote and rugged terrain, passing through 23+ communities, while confronting some of the harshest winter conditions. Survival skills are essential, all Pro Class teams comprise two racers on two snowmobiles for safety. The Iron Dog offers a non-competitive Expedition class giving adventure seekers an opportunity to travel 1,049 miles on the Northern Route of Historic Iditarod Trail to Nome. These teams of two or more travel on a portion of the same trail as the Pro Class Teams.

If you are a snowmobiler you can really appreciate what the Iron Dog is about. As snowmobilers most of us have had our challenges - breakdowns, bad weather, injuries, and long days in the saddle. But these guys are riding 14 hours a day over the course of six days in extreme cold, over rivers, lakes, open water, deep snow, hard snow, and dirt. These guys see it all. And not only do you have to be an excellent rider and tough as nails, you better know how to work on a



snowmobile. All repairs and maintenance along the way has to be done by the riders. A few years ago I heard about an Island Park local named Randy Gravatt that had raced in the Iron Dog. When I eventually met Randy I was very interested to hear his stories.

Randy came to Island Park in the early 90s following his friend Joe Williams out from Pennsylvania. Randy's father was a Marine, so he taught Randy discipline and mental toughness; two important qualities in racing.

In 1996 Randy and Joe set the Guinness Book of World Records new record for miles ridden on a snowmobile in 24 hours. They rode almost non-stop to set the record at 912 miles. All this in blizzard conditions. The next year they broke their own record with 1,289 miles covered. This time in much better weather.



Randy first started racing in cross country motorcycle races back in Pennsylvania. It's something he still does to this day. Eventually he got into snowmobile racing and from the first Iron Dog Race in 1984 he aspired to give it a try.

In 2012 his dream of racing in the Iron Dog came to reality. He asked Joe to be his racing partner, but it's a major commitment of time and money to be in the Iron Dog, and Joe declined. It cost close to \$30 thousand to be in that race with all aspects considered. There's a lot of planning, practicing, mechanicing, equipment, clothing, time and travel involved. Randy ended up finding a partner through online connections, a guy

from Wasilla, Alaska named Mike Swiantek.

Racing the Pro Class in the Iron Dog is as tough as it gets. Being a rookie to the race, with a partner you just met, and not having a lot of practice time in Alaska makes it that much tougher. Randy told me they had a good draw as the third team in the starting lineup. Right there on the starting line you're surrounded by Iron Dog Legends. Guys that have won the Iron Dog before. Randy said one of the pros came up to him before the start and said, "Just get through the first day. If you can get through the first day you can make it."



Whether that was a blessing or a curse is hard to say. Randy and Mike finished the first day, but at great cost and pain. Both of them hit stumps and damaged their sleds. Randy broke his sternum and some ribs in his crash, as well as the spindle in his tunnel.

Being tough and being a good mechanic are Iron Dog requirements and Randy and Mike were able to put together the sleds well enough to get to the first layover where they could make repairs

They pushed on the next day and the next with better fortune and managed to get to Nome, the halfway point, after three hard days of riding. Along the way there is an infamous section of trail that often doesn't have snow. It looks like an ATV trail. I wondered how you could possibly keep your sled cool with no snow. Well, Randy, being a good mechanic, improvised solutions for packing snow when found, and adding fans to cool the engine.

Continued on Page 19

Caldera Custom Docks

ISLAND PARK, IDAHO

DOCK SALES/SERVICE/MAINTENANCE

208-313-2858
Calderacustomdocks.com

FEATURING Wave Armor PRODUCTS



3509 Rocky Lane
MLS#2163483
\$189,000

This cabin sits in a river community on a treed lot in Island Park Idaho. 2nd lot is available to purchase separately or bundle with cabin for those looking for more land. The area has access to the river and use of a community dock and boat launch for property owners. Cabin is strong with new roof and many upgrades including an 8x27 shed for storage. Additional outdoor storage attached to cabin. An attached carport gives many options. Cabin has been well maintained. Pinehaven is adjacent to the North Fork of the Snake River and Harriman State Park.



3860 Rainbow Drive
MLS#2165118
\$285,000

Built strong, this covered trailer has withstood many winters. Property sits on 2 lots close to the Buffalo River and ATV access point. Included are 2 RV Parking areas with water, power and sewer hookups. It's a heavily treed lot with Room to build a 2nd structure. Short term rentals are allowed, great investment property. Home is in great condition and subdivision is accessible all year long. Enjoy fishing, hunting, mountain biking, ATV riding and hiking out of the development, gas and restaurants are within 3 miles of the home.



3565 Piney Road
MLS#2162949
\$189,000

Great cabin near the within walking distance to the North Fork of the Snake River and the Buffalo River. Very private area with large treed lot. Winter access by snow shoe or snow mobile. Storage shed included. Cabin sits on Forest service leased land.



4426 Deer Crest Drive
MLS#2155834
\$1,500,000

This ready to occupy Custom 4 bd, 4 bath home is in a gated community. Quality build, looks and smells new. Circular sawn hickory floors. Hickory cabinets & slate tiled kitchen. Granite countertops throughout & stainless steal appliances. Carpet the 4 bds & both family gathering areas. All year access, forced air heat & on demand hot water. Hand carved bears on beams in great room. 1.83 acre treed lot. Oversized 896 sq ft heated detached garage. Trex deck & covered entry. Private well & city sewer. 1000 gal buried propane tank is owned. Comes with most furnishings & the John Deere snowblower in the garage. **Owner will carry a loan for up to 10 years with 15% down at just 5% interest.** 10 min from gas, golf, and Henrys Lake. 15 min from Hebgen and 20 min from West Yellowstone. A perfect place to play and enjoy.



Clint Farmer

Honesty and Integrity. Two things you should consider when looking for a real estate professional. For 18 years I have served the Island Park area as a real estate professional being honest, hardworking and maintaining my personal values. As a result, I have enjoyed many repeat customers.

As an expert in property evaluation I can get your property priced and sold at a great return. As a buyers' agent, I can advise on the quality of the investment property and potential for earned equity.

Call today for a free property valuation!

435-770-3971

Clint@Rainbw.com

Rainbow Real Estate



Blue Buffalo Resort

Cozy cabins,
winter adventures
and warm hospitality.
Scan the QR code
for more info and to
book your stay!



scan for menu



Blue Buffalo Grill

American classics
and creative
comfort food.
Open: Mon-Sat
11am-7pm

For Take-Out call:
208.220.7896

3402 N. US-20
Island Park, ID

www.BlueBuffaloResort.com

EVENTS IN ISLAND PARK

Island Park

- Saturdays
- May 23
- May 25
- June 15
- June 15
- June 15
- June 29, July 27
- July 4
- July 6
- July 20
- July 19 & 20
- July 20
- August 3
- August 5
- August 9 & 10
- August 22 - 24
- August 24
- August 30 & 31
- August 31
- September 7
- Memorial to Halloween
- Memorial to Labor Day
- October 18 & 19
- October 25
- October 26
- November 29 & 30

West Yellowstone

- Thursdays June to September
- July 4 & 20
- July 13
- August 2 to 11
- August 3, 10 & 24
- August 10
- September 5 - 7
- September 14

Museum Exhibits - Ashton

Chamber Summer Kickoff

Pancake Feed

Henry's Fork Days XL

Wellness Expo 2024

Classic Car Show

Yoga at the Pavilion

Fireworks

Sawtelle Fun Run

Mesa Falls Marathon

Island Park Festival

Pioneer Days - Fireworks

I ♥ IP - IP Chamber Event

Daisy's Angels Fashion Show

Swaptastic Swap Meet

Sawtelle Music Festival

Community Pancake Breakfast

Island Park Festival

Yoga by the River

Wine in the Woods

Music (Saturdays, some Fridays)

Shotgun Sundays

Haunts of Harriman

Hallowfest

Halloween Costume Party

Island Park Festival of Trees

Museum of the Henry's Fork

Yellowstone Playhouse

Island Park EMS Building

Last Chance Fisherman's Access

Island Park EMS Building

Lakeside Lodge

Sawtelle Resort Pavilion

Lakeside Lodge

Sawtelle Peak Rd

Mesa Falls Scenic Byway (start)

Sawtelle Resort Pavilion

Lakeside Lodge

Sawtelle Resort Pavilion

Hines Residence

Island Park EMS Building

Sawtelle Resort Pavilion

Little Church in the Pines

Sawtelle Resort Pavilion

Cafe Sabor

Harriman State Park

Lakeside Lodge

Shotgun Bar

Harriman State Park

Island Park Village Clubhouse

Lakeside Lodge

Sawtelle Resort

Museum Lawn

Heritage Park

West Yellowstone Rodeo

West Entrance (YNP)

Heritage Park

Hi Country Tavern

Heritage Park

Union Pacific Dining Hall

For more information about these events, check out our website at:

IpIdaho.com/events



MOUNTAIN LIFE REALTY

Events this Month

Lakeside Lodge June Events:

- Saturday June 1: Live music by OCD 8 pm - 12 am
- Saturday June 8: Live music by Perfect Chaos 8 pm - 12 am
- Saturday June 15: Live Music by 208! 8 pm - 12 am
1st Annual Classic Car show 11 am - 3 pm
- Saturday Jun 22: Live music by Scratch 8 pm - 12 am
- Saturday Jun 29: Live music by The Unknown Bank 8 pm - 12 am

YELLOWSTONE
TRAIL HALF MARATHON
Vacation Races | Yellowstone National Park

Montana Fish & Hang
21-23 Jun
JUN 21 AT 6 PM – JUN 23 AT 6 PM PDT
Montana Fish and Hang
West Yellowstone

All event details can be found at ifishibelong.org/fish-and-hang/montana/.

Harriman State Park Thurmond Creek Bridge Project
JUN 22 AT 9 AM – JUN 23 AT 12 PM
Harriman State Park of Idaho

Come join in the bridge rebuild at Harriman. There will be on-site camping available if you want to stay and help both days.

Wildlife Festival BEAR COUNTRY
HENRYS FORK WILDLIFE ALLIANCE INVOLVED PROPERTY OWNERS OF ISLAND PARK BEAR AWARE ISLAND PARK
Free Admission
JUNE 22, 2024

10am-3pm
Harriman State Park
FREE ADMISSION and fun for the whole family. Lunch from Los Tacotes Authentic Mexican Food Idaho in Falls
Idaho Fish and Game Upper Snake Bear Trailer and mechanical bear. Great raffle prizes. Guided nature walks.

Check facebook events for updated details
29
2nd annual Island Park-St. Anthony Ride

OUTBACK REALTY
SAVE THE DATE
July 12th
Tee off at 3PM
Golf Scramble
Raffle & Silent Auction
Putting Contest
Food ~ Drinks ~ Fun
Prizes
Call us to sign up!
We're looking for Volunteers and Raffle Donations! Call Jackie (208) 390-8303
Join us!
SUPPORT
ISLAND PARK COMMUNITY FUND
Charity Golf Scramble
Sponsored by Outback Realty

The Historic Railroad Ranch
Harriman State Park of Idaho
Guided Tours Available
Meet at the Jones House, no reservations needed.
Tours start at:
11 am and 3 pm Friday, Saturday, Sunday, & Monday
11 am on Wednesdays

West Yellowstone • MT CALENDAR of EVENTS
SUMMER 2024
June 7-8 Yellowstone Trail Half Marathon
June 15 Lawnmower Races [at Big Horn Bar]
July 4 Independence Day Celebration & Pie on the Porch
July 4 FREE Music in the Park [The Powell Brothers @ Pioneer Park]
July 13 Wild Bill Day [at West Yellowstone Rodeo]
July 13 Mountain Bike Biathlon
July 13 Kids in the Park and Touch a Truck [at Pioneer Park]
July 20 Heritage Celebration
July 20 FREE Music in the Park [Lies or Lullabies @ Pioneer Park]
Aug. 2-11 West Yellowstone Mountain Man Rendezvous
Aug. 2 FREE Music in the Park [Tail-hooked @ Pioneer Park]
Aug. 2 & 3 West Yellowstone Rod Run
Aug. 3 FREE Music in the Park [The Walting @ Pioneer Park]
Aug. 3 & 4 Wyoming Desperados Shootout [at Diamond P Ranch]
Aug. 10 Horseshoes for Heroes [at Big Horn Bar]
Aug. 10 FREE Music in the Park [Slamabama @ Pioneer Park]
Aug. 17 POWMIA Ride [11th Annual MT Ride to Remember: POWMIA]
Aug. 25 Christmas in August [at Museum of the Yellowstone]
Aug. 26 FREE Music in the Park [Austin English and Band @ Pioneer Park]
Sept. 6-7 The Wretched Mess Fest [Union Pacific Dining Hall & Bob Jacklin Casting Pond]
Sept. 8 WYSEF Golf Tournament
Sept. 14 The Happening
Wild West Yellowstone Rodeo mid June - August Every Tuesday - Saturday
Farmers Market on the Museum Lawn June 1st through September 28th Every Thursday 5-8pm



WEST YELLOWSTONE PUBLIC LIBRARY:
Library Hours:
Tuesdays, Thursdays, and Fridays 10:00 AM - 6:00 PM
Wednesdays 10:00 AM - 8:00 PM
Saturdays 10:00 AM - 2:00 PM
Closed Sundays and Mondays

Free Spanish-to-English Classes:
Beginner Level: Mondays and Fridays at 5:00 PM
Intermediate Level: Mondays and Fridays at 6:00 PM
Lego Club: Tuesdays at 3:15 PM
Pre-K Storytime: Wednesdays at 11:00 AM
Chess Club: Fridays at 4:00 PM

West Yellowstone Public Library
23 Dunraven Street
West Yellowstone, MT 59758
(406) 646-9017
<https://westyellowstonepubliclibrary.org/>

ISLAND PARK LIBRARY ACTIVITIES
CHILDREN'S STORY HOUR Fridays at 11:00am
CRAFTY CORNER Thursdays at 3:30 pm
Bring your favorite craft i.e. knitting, crocheting, coloring, puzzles, etc. or just come and socialize.
YOGA Wednesdays at 3:00 pm
Please bring your mat.
HERBAL TEA PARTY 3rd Monday of the month at 1:00pm
Refreshments welcome.
COOKBOOK BOOK GROUP 1st Monday of each month at 1:00pm
Please call the Library at (208) 558-0991 for additional information.
Bring a dish made from a recipe in the monthly designated cookbook.
Jun. 3rd –Ready or Not by Michelle Tam and Henry Fong
Jul. 1st –The I Heart Naptime by Jamielyn Nye
Aug. 5th –Bring your own recipe
Sep. 9th –Magnolia Table by Joanna Gaines
Oct. 7th –In Memory's Kitchen: A Legacy from the Women of Terezin
Nov. 4th –Bring your own recipe
Dec. 2nd –Betty's Favorites (Christmas Party)
SPECIAL CLASSES AND EVENTS
WEEDS and How to Control Them May 29th 6:00pm – 7:00pm
Presented by Bryce Fowler
Noxious and Obnoxious weeds and ways to eliminate them
MEDICINAL PLANTS June 5th 6:00pm – 7:00pm
Taught by Alan Webb
WILDLIFE OF YELLOWSTONE June 19th 6:00pm – 7:00pm
Presented by Adam Brubaker

Centennial Excavation

Shiloh Owens Jami Owens
208-589-8313 208-589-6893

Wedigldaho@hotmail.com

www.WeDigsIdaho.com

LIC # RCT-1774



Excavation • Road Building • Lot Clearing • Complex/Standard Septics
Utility Trenching and Installation • Demolition • Gravel

WE DIG IDAHO

Hiking Reminders

We have some of the most beautiful hiking trails in the world right here in Island Park, and if that's not enough, Yellowstone Park is a stones throw away for all the hiking you can imagine. Spectacular views, wild flowers, rivers, lakes, streams, and wild life of all kinds can be your picture perfect day.

There are some dangers associated with hiking in the wilds we call home though. The woods around us are still wilderness and being prepared can save your life. You might think it's silly if you're just going out for a quick day hike, but you should always consider a pack with the following items:



- Map
- Bear Spray
- Sunglass and a hat
- Sunscreen
- Flashlight
- Waterproof matches and/or lighter
- Snacks, high energy bars, granola, candy, or fruit
- Extra clothing, including a bright colored rain poncho. Temperatures can change dramatically, especially in the mountains with elevation changes. For every 1,000 ft the temperatures generally can drop about 3 to 5 degrees.

The recommendations are, that you never hike alone, take frequent rests, drink plenty of water along the way, let the slowest person in your group set the pace, wear appropriate clothing and sturdy hiking boots, and consider a hiking pole or walking stick. Be mindful of your surroundings, and don't wear ear pods so you can hear the woods or the wild life. Make sure you have a plan, in case of an emergency, what will your group do? If someone is injured or a medical emergency occurs, how will you handle it? Be sure to leave an itinerary with a friend or family and check in with them upon your return.

Have small children in your group? You might consider some advance planning. Teach them what to do if they become lost or disoriented.

Make sure they have the tools to survive! Pack their backpack with their own things, water, snacks, a whistle, and a brightly colored poncho. If you come across a predator, make sure your child knows the dos and don'ts of wildlife interaction. Teach them not to hide, but stay in plain sight, sing loudly to themselves, and blow their whistle with sharp blasts every 3 to 4 minutes. Remind them to stay hydrated, calm, and to stop moving. Practice these things with them so the chances of finding them go up exponentially.

The Gallatin County Search and Rescue has compiled a list of Lost Person Behaviors for a variety of different personalities on their Facebook page. Persons with Dementia, Gatherers, Hikers, and Small Children all have common threads you will need to provide searchers to be found, but there is unique information about each, if you can provide, that will assist in locating them more quickly and efficiently, which can lead to a more desirable outcome. A quick search of Lost Person on their Facebook page will bring up all the articles, read up on the topic or topics that best fit your group before heading out!



Historic Phillips Lodge

208-558-0192



Get a great rate on Cabins!

Stay in a one, two, or three bedroom cabin
Every cabin includes private hot tub
Fireplace and WIFI TV

Open

Full Bar

Daily

8 am – 8 pm

Closed on Wednesday

Serving Breakfast, Brunch,
and Dinner

Homemade Soups Everyday

Prime Rib Everyday



208-558-9379 – Lodgepole Grill

Cabins@PinesIslandPark.com



14 YARD DUMP BEDS

Available for all your construction material needs whether you need product hauled to you or you need construction waste hauled away,

Give us a call today!

208-569-4763 or 208-351-7058

Water Conservation in Island Park Reservoir, A Local Quest

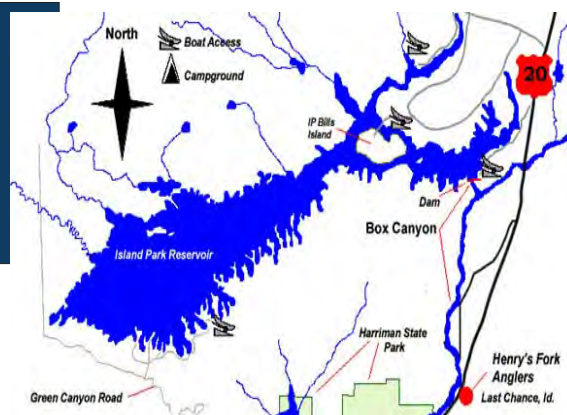
While Dr. McLaren was analyzing the water quality, The Henry's Fork Foundation, Friends of the Teton River, Trout Unlimited, and The Nature Conservancy partnered to work on a solution that benefitted both the farm and the fish. Their goal was to reduce the draw down of the reservoir by implementing "Precision Water Management".

One of the most interesting programs initiated was the installation of Software Advisor Packages on center pivots. The package provides detailed information on soil-water balance in specific fields to assist farmers in making informed decisions about water usage. This program is estimated to have saved 25 to 50 acre-feet per center pivot.

The program has also implemented these water saving plans:

- Leasing farmland to defer irrigation. Farmers lease their land, either leaving it fallow or grazing livestock on cover crops, to reduce irrigation demand. Compared to a four-year or seven-year crop rotation (typical for the Upper Snake River Plain in southeastern Idaho), the Collaborative pays farmers to forgo irrigation once every four years.
- Improving soil health. The Farms and Fish Program encourages farmers to monitor soil moisture and use soil health practices such as cover cropping, no-till, and interseeding where appropriate. These practices can build soil organic matter, improve water-holding capacity, and reduce soil erosion. Even a 1% increase of soil organic matter can result in a gain of as much as 25,000 gallons of soil water per acre.
- Converting to different crops. Farmers can grow some of their crops in different seasons (e.g., winter-wheat conversion from spring-planted grain), plant cover crops, or plant crops that require less water. This can lead to less water use overall.
- Utilizing agricultural technology. Within the region,

producers are integrating advanced agricultural technologies like soil moisture monitors, irrigation modeling and scheduling, satellite imagery, and low-elevation sprinkler applications to balance crop growth and water use. These tools help producers adjust irrigation precisely on the individual farm-field level, monitor crop health, enhance crop productivity, and minimize over-watering, which can reduce water use.



What all of these organizations and research has taught us, is that less water in the reservoir is bad for all of us, but a win/win solution for farmers and recreators is a must. The exciting result of all this effort, was 2,300 acre-feet of Island Park reservoir conserved in 2022. A maximum annual draw down of 60,000 acre-feet is the ultimate goal of this program, but this is 20% reduced drawdown was a great start!

All of this effort will dramatically improve the fishery, both downstream and in the reservoir. It will keep our reservoir full enough for recreating, and still serve the farmers as needed. Next time your out to play on the water, whether fishing or recreating, take a moment to reflect on the efforts others are making to keep Island Park Reservoir healthy and beautiful.

For more information, visit HenrysFork.org

Open Year Round

Restaurant

Breakfast Sat- Mon 8am-11am
Lunch 11am-5pm
Dinner 5pm-9pm

Tavern

Full Bar w/ Patio Seating
Pool Table
Shuffle Board

Lodging

Cabins
Motel Rooms
Campground

C-Store

Cold Beverages
Clothing
BBQ Supplies
Gifts
Miller Ranch Beef

Lakeside Rentals

9am-5pm

Reserve your rental online today!

208-558-9770

UPCOMING EVENTS

June 1st- OCD 8pm
June 8th – Perfect Chaos 8pm
June 15th – 208! 8pm
June 22nd – Scratch 8pm
June 28th & 29th – Unknown Band 8pm
July 4th-6th – Satin Steel 8pm
July 4th – Fireworks 10pm
July 12th & 13th- Kip Attaway 8pm
July 19th & 20th- Aaron Ball Band 8pm
July 20th – Fireworks 10pm
July 27th – Perfect Chaos 8pm
August 3rd- 208! 8pm
August 10th- OCD 8pm

**We Proudly Serve
Idaho Grown
Miller Ranch Beef**

www.lakesidelodgeandresort.com



OutBack Realty

Call Us Today!

Your Premier Office



(208) 558-9500



Jamie Phillips
208 221 2647
Broker



Jackie Jensen
208 390 8303
Realtor



Riley Hoyle
208 351 6705
Realtor



Monika Boyce
208 240 2717
Realtor



Christie Cameron
208 351 0816
Assoc Broker



Gay Johnson
208 351 5204
Realtor



Gary Dawson
208 351 3054
Realtor

www.outbackrealty.com ~ www.islandparkrealestate.com



MACK'S INN \$299,000
3 RV SPOTS ~ BUNKHOUSE
WATER, SEWER, POWER,



SHOTGUN - \$499,000
COMPLETELY REMODELED
2 BED / 1 BATH / STR



HARRIS H.S. \$609,000
4 BED / 1 BATH / 1/2 AC
RENTAL - CLOSE TO YNP



ICE HOUSE CREEK \$799,000
3 BED / 2 BATH / 1 LEVEL
HEATED FLOORS / STR ALLOWED



LAST CHANCE - \$1.35M
5.46 ACRES
4 BEDROOMS / 5 BATHROOMS



HENRYS LAKE - \$835,000
4 BEDROOM / 2 BATHROOMS
ATTACHED 2 CAR GARAGE.



RED ROCK - \$1.25M
47.16 ACRES - VIEWS!
BACKS FOREST SERVICE.



COMMERCIAL/ \$1.2M
1.7 ACRES
BOONDOCKS RESTAURANT



SHOTGUN \$360,000
2 BED / 1 BATH / .4 ACRES
BACKING YALE CREEK



MACKS INN \$549,900
2 BED / 2 BATH / 1/2 ACRE
2 SHEDS / OVERSIZED GARAGE



LAST CHANCE - \$3.49M
LAUNDROMAT
10 HOTEL ROOMS / 4 CABINS



GRAVEL PIT \$750,000
COMMERCIAL PROPERTY
4.38 ACRES

STONEGATE \$199,900
3.51 AC BUILDING LOT
GREAT YEAR ROUND ACCESS

CENTENNIAL SHORES
WATER VIEW / 1.4 ACRES
\$325,000 ~ COMM WATER

SAWTELLE MTN
.7 ACRES ~ STR ALLOWED
TREES ~ \$239,900

SILVERHAWK \$375,000
BACKS F.S. ~ STR ALLOWED
PRIVATE BOAT DOCK

By Tom Bithell

In Nome the racers get a day off to celebrate the halfway point and the finish for the Expedition Class. Randy was checked out by a local nurse. That's when he officially knew he had a broken sternum and ribs. He was advised he probably should quit the race, but with all the time and money he had invested, he was determined to keep going.



Randy and Mike ended up finishing the Iron Dog. A pretty incredible thing for two first timers. For most people that would be an achievement they could be satisfied with. But Randy wanted more Iron Dog.

So in 2014 he rode in the Expedition Class with a group of seven riders. The Expedition Class requires at least four riders per team, but more is okay too. There were some struggles along the way then, but the team made it to Nome and finished.

In 2015 Randy again decided to race in the Pro Class. He found a partner from Minnesota named Deiter Stroebel. This year, however, they wouldn't have as good of fortune. 2015 was a record warm year in Alaska. There wasn't much snow and what there was, was rough.

On the way to Nome while crossing the Bering Sea on Norton Sound Randy and Deiter ran into open water. They rode for their lives trying to make it across but the belts got wet and the sleds sank.

Fortunately it was not over their heads, it was water on top of ice beneath them. This was a life threatening situation being in water up to your neck.

Luckily Randy said some locals from an Eskimo village saw their snowmobile lights, knew they were in trouble and came out to help them to safety. They survived alright, but that was the end of the race for them that year and the last Iron Dog for Randy. At least up to now, because with Randy you never know. He's still got racing in his blood and age doesn't seem to slow him down much.

Shuffle Board



**We Proudly Serve Idaho
Grown
Miller Ranch Beef**



Come Live the Mountain Life!



IpIdaho.com



Patty Laritz-Bithell | Patty@IpIdaho.com | (208) 860-4846



Income from Nightly Rentals - Commercial
3519 Yale Kilgore
MLS # 2157469
\$1,250,000



2 RENTAL UNITS
3771 Moose Breath Lane
MLS # 2161921
\$840,000



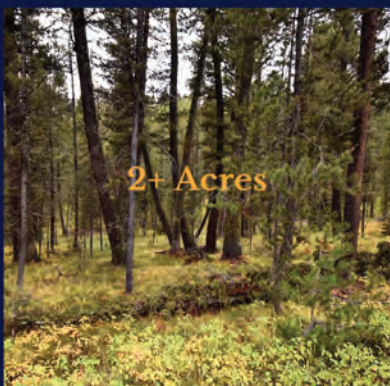
Lots in Buttermilk Area
TBD Totem Rd
MLS # 2161709, etc
\$199,900 Ea/lot



NEW SUBDIVISION
4920 Alpenglow Way
MLS # 2160452
\$264,000



Great Views - Two Cabins - Active Rental
3755 Bishop Mountain Dr
MLS # 2163974
\$1,879,000



YALE CREEK
4125 Ponderosa Dr
MLS # 2160382
\$225,000



4 active nightly rentals - 5+ Acres - Commercial
3555 Yale Kilgore
MLS # 2156139
\$2,000,000

LIST RIGHT

I prepare a strong value proposition for potential buyers. We get the cabin in the right condition to list at the right price, then highlight your home's attributes with professional photography, drone footage, and/or 3D tours as appropriate to the market.