

## Inside This Edition

Crossword	Page 2
Toy Rental Companies	Page 5
Restaurant Hours	Page 8
Fishing Report	Page 10
Local Events	Page 15

Follow us on  
Facebook



The Caldera Times  
Island Park, Idaho

Read for free at:

[www.TheCalderaTimes.com](http://www.TheCalderaTimes.com)

Have an event coming up? Hiring? Know someone who should be highlighted? Want to write to the editor?

[Jen@TheCalderaTimes.com](mailto:Jen@TheCalderaTimes.com) 406.209.0022

# The Harriman's: Island Park Legends

We all know that Harriman State Park is a jewel in the Caldera. 14,700 acres surrounded by an additional 16,000 acres of wildlife refuge with 20 miles of trails, a bird sanctuary on the Henry's Fork River, and teaming with wildlife. The family namesake and story comes with a rich historical tapestry.

E.H. Harriman, born February 20, 1848, quit school at 14 to be a message boy for Wall Street, but by 22 had earned a seat on the New York Stock Exchange. This was not where he made his fortune though. His vision for the future was railroads, and in merging banking with railroad investment, he made his mark in history.

He met his wife, Mary Williamson Averell, who's father happened to be both a banker and a railroad president in upstate New York. He promptly married her in 1879. What a way to merge his personal life with his business life and follow his passion! He has been called, in many articles since, The Czar or Titan of Railroads.

Harriman began his career in Railroad by "flipping" troubled railroad companies. In 1881, his first purchase was the bankrupt 34-mile Lake Ontario Southern line. For a hefty profit, after reorganization, he sold it to Pennsylvania Railroad. By age 35, he was the successful director of Illinois Central Railroad, and his reputation for management skills in the industry brought much acclaim and wealth.



*Yellowstone Branch of the Union Pacific*



*E H Harriman and sons, Averell and Ronald*

This allowed him to purchase control of the Union Pacific in 1897, after the United States Pacific Railroad Commission determined the previous officers and directors had syphoned money loaned to them from the US government to build the railroad west-ward in the amount of \$23.3 million dollars, or \$1.17 billion today. He installed himself as chairman of the board and invested \$50M into improving its equipment and eliminating the indebtedness by 1904.

Harriman's vision for the Railroad was a first-rate physical plant competing in markets throughout the West and taking full advantage of location, strategic opportunity, and the coming traffic of the early 20th century. By 1900, he had control of both the Central Pacific, the western end of the transcontinental, and the Southern Pacific, which would link Union Pacific to the west coast. This endeavor brought him west to Idaho.

The first order of business was to inspect the lines from the Missouri River to the Pacific Coast. He found them to be in disastrous condition and requested \$25M to make repairs before even returning to the east coast. Line expansion was another focus, and millions were spent on new routes. Harriman took the bankrupt railroad in 1899 to showing a profit of \$14M in only a few short years. During this same time period, he bought up as much of the worthless stock in Union Pacific at pennies on the dollar, which set the stage for one of the largest personal fortunes in the country.

*Continued on page 9*

# The Riding Clubs of Island Park: Bettering Our Trail Systems and Our Lives

There are thousands of miles of trails in the Caldera, and most of us use them regularly, both in the summer months and the winter months. There are experienced riders, and inexperienced riders, riders that live here and riders that don't. What we all have in common is a love for the outdoors and riding.

The Fugowee Motorsports Club is the oldest club. Dennis Kennedy, along with Ron Kynaston, established the program in about 1965. Since that time, there have been many, many community members donate their time and money to help the club succeed.

I had the opportunity to have a long conversation with Kent Bateman recently. He has been involved with the Fugowee's for about 15 years now. He can remember the original logo, and hanging out with Dan Decker at Ponds Lodge when they sold Johnson and Cat machines. He also remembers the big Fugowee banner Dan's shop, which is now the medical center near Ponds Lodge, proudly displayed.

Kent's job and Roy Leavitt were the reasons he became very active



with the group. Kent was the manager at Action Motor Sports in Idaho Falls for 28 years and wanted to help support the club.

As we reminisced some, he told me of the fundraisers they have had over the years, some of the a simple fun run on a Saturday with spaghetti dinner and games at the old Macks Inn play house, and some a full night of Bingo and prizes. What is impressive are the years of support towards the sport they have maintained. Here are some of the items they have helped purchase over the years:

1. Avalanche beacon boards
2. Funds to the Adam Anderson Avalanche Program for avalanche bags
3. Funds to the Friends of the Gallatin National Forest Avalanche Center
4. Funds for additional hand held radios for Fremont County search and rescue

*Continued on Page 10*

Crosswords

ACROSS

- 1) Weakens, as support
- 5) Naval Academy newcomer
- 10) Yemen's Gulf of \_\_\_\_
- 14) Group of shops
- 15) Sans \_\_\_\_ (print font)
- 16) "I never \_\_\_\_ man I didn't like" (Will Rogers)
- 17) Introduced
- 20) Begged
- 21) U.N. body dealing with worker's rights
- 22) What some people are stuck in
- 23) Barnyard parent
- 24) Thin lung membrane
- 27) Urban pollution problem
- 29) Honey badger
- 32) Underwater vessel, for short
- 33) Cleopatra's biter
- 36) Rose Bowl Parade site
- 38) Bad thing to give to a child
- 41) Makeup component
- 42) Baden twice
- 43) It "suits" Santa
- 44) It brings out the child in you
- 46) Mascara site
- 50) On top of that
- 52) "Mono" cousin
- 55) Certain little piggie
- 56) Argentite is one
- 57) One who instills hostility
- 60) Be open to learning new things
- 63) No ifs, \_\_\_\_ or buts
- 64) Broke off
- 65) Helm position
- 66) Zap with a weapon
- 67) Once bitten
- 68) Nearly unsolvable

DOWN

- 1) Barbecue leftovers
- 2) He said, "There's a sucker born every minute"
- 3) Drunk, in slang
- 4) Utter unclearly
- 5) "Don't give me that!"
- 6) Envelope contents
- 7) Lake near Niagara Falls
- 8) Tough thing to be in
- 9) Small salamander
- 10) Abundant
- 11) Frees of lice
- 12) Airport info, initially
- 13) Negative vote
- 18) "Aw" follower
- 19) Wick holder
- 24) Mexican coins
- 25) Ancient inscription
- 26) Atty.'s organization
- 28) Wilde's "The Ballad of Reading \_\_\_\_"
- 30) Informal British abbreviation of assent
- 31) \_\_\_\_ Heel (North Carolinian)
- 34) Adept
- 35) Kind of colony or code
- 37) "\_\_\_\_ M For Murder"
- 38) Tournament passes
- 39) Giant conifers
- 40) Bird's beak
- 41) Stat for a pitcher
- 45) Spoiler or destroyer
- 47) \_\_\_\_ the Hun
- 48) Oklahoma football player
- 49) Did a sheepdog's job
- 51) Clean the chalkboard
- 53) Down and out
- 54) Shoo-\_\_\_\_ (certain winners)
- 57) "Green Gables" girl
- 58) A rich supply
- 59) Baby's nurse, in China
- 60) Baseball club
- 61) "Messenger" compound
- 62) Aquatic shocker

BRO CODE

1	2	3	4	5	6	7	8	9	10	11	12	13	
14				15					16				
17				18					19				
20									21				
22				23					24			25	26
27			28			29	30	31			32		
			33	34	35		36				37		
		38	39				40						
41									42				
43				44				45		46	47	48	49
50				51				52	53	54		55	
			56				57	58				59	
60	61						62						
63							64					65	
66							67						68



- **Local Agents**
- **Local Office**
- **Best Results**

Call for your  
**FREE**  
Market Analysis on your cabin or lots



**IDAHO'S REAL ESTATE**

Find the Best Cabins & Lots At  
[www.IdahosRealEstate.net](http://www.IdahosRealEstate.net)



**Rod JONES**  
THE DIFFERENCE BETWEEN LISTED & SOLD  
(208) 313-0000

Want yours sold?  
Call us!



"Idahos' *Jewell*"  
(208) 241-7769

**EVERYTHING we touch turns to SOLD!!**

# The REAL Yellowstone

By: Lori Nuss  
Lorinuss@me.com

This was my mom, Bunny. In the summer of 1952, she rode the train from Minnesota with two friends to Yellowstone on their break from college.

The summers of 1946 through 1952 my dad Dale Nuss was a young seasonal ranger in Yellowstone. He met Bunny by going for coffee at the Mammoth Terrace Grill where she worked. Within weeks they had fallen in love early in the summer. August came and Bunny had to leave for school just as my dad accepted a permanent Ranger position in Shenandoah National Park in Virginia.



Bunny left Yellowstone for Minnesota and Dale to Virginia. They wrote letters to each other almost daily. Dale missed Yellowstone and Bunny and knew he belonged in Yellowstone. Young Dale had spent his summers in the park from the age of six. His dad (also named Dale) owned and operated a boy's summer camp in Yellowstone from 1928 to 1958.

In August 1953, not even a year after arriving Shenandoah, Yellowstone's Chief Ranger Otto Brown transferred Dale back to Yellowstone with a permanent ranger assignment. On his return to Yellowstone, he stopped in MN to ask Bunny's father for Bunny's hand in marriage.



*I chose another career path, but my heart also still lives in Yellowstone, just as my dad's did.*

## Island Park's Newest Little Souvenir Shop With The Biggest Heart

Ready to take home your unique souvenir or gift from your visit to Island Park? The brand new Island Park Souvenir and Gift Shop is open! Located at 3519 Yale-Kilgore Road, our littlest shop with the biggest heart offers a wide range of specialty and on-of-a-kind items to commemorate the memories you make in our beautiful area.

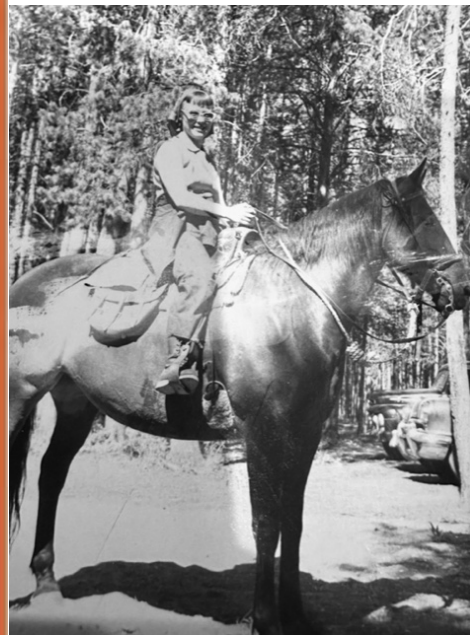
Whether it's a t-shirt, hat, postcard, or trinket, we have something for everyone. Friendly staff will be on hand to help you find the perfect gift or keepsake to bring home.

Why wait? Come see us online only for now, at [www.IslandParkSouvenirs.com](http://www.IslandParkSouvenirs.com), and take home your piece of Island Park. Can't wait to see you!



On February 20th, 1954 they were married in Minnesota and the next day they began their drive to Yellowstone to begin their married life together.

They lived in Yellowstone year-round until 1980 when my dad retired from the National Park Service. Along the way came my brother Stuart, my sister Cara Lee and me. Stu and Cara Lee went on to have NPS careers.



**McCLOUD SERVICES**  
Excavation - Plumbing - Utilities  
Gravel - Roadbase  
208-223-2382  
flintmccloudconstruction@gmail.com

# The Mountain Life Charitable Foundation Strikes Again!

The Mountain Life Charitable Foundation held its 1st Annual Snowmobile Fun Run on January 20, 2024. A bright, sun shining day with 114 Participants either riding their snowmobile to each location or driving in a car or side by side. There were five local establishments that served as a stop to get their card punched and enjoy the specials offered. Shotgun Bar, Cafe Sabor, Lodgepole Grill, Connie's Restaurant and Lakeside Lodge. During the event three Grand Prizes were raffled off for those who participated in the ride. A snowmobile Safety package that had a KLIM AV Backpack, (donated by Klim) probe, radio, and shovel. A BBQ package with a Blackstone Grill, Coho Cooler, Grill accessory kit, and 50 pounds of Miller Ranch Beef. Then a Stay and Play package at Lakeside Lodge and golfing at the IP Village Golf Course. A special live auction was done for our friend Patrick Shaw who was recently diagnosed with ALS. Money was raised for his new adaptive vehicle and medical necessities. Wayne Lower MC'd the auction and helped bring in \$3100 for Patrick. The Fun Run brought in \$5650 to help the Island Park community.



raised \$1000 from the Angel Tree for the Charter School by selling the cute ornaments made by the students. After the event, our charity members voted to pledge an additional \$7500 to support the school's relocation effort. So a grand total of \$16,200 was donated to the school.

The Island Park Charter School has expressed a need to purchase land to relocate the school. The existing building and location are quickly becoming too small for their growing program. The school has a grant toward a new building which will expire later this year.

The Island Park community and our visitors have shown us how much they care. We are all so happy to have such wonderful neighbors. We want to give special thanks to our many sponsors:

Island Park Adventures, KLIM, Rexburg Motor Sports, Lakeside Lodge, Shotgun Bar, Cafe Sabor Island Park, The Parlor, Connie's Restaurant, Saloon & Fitness Center, Pond's Lodge, The LodgePole Grill & Bar, Sam's Patch, Blue Buffalo Resort, Island Park Village Golf Course, Jiffy Lube-Idaho Falls, Stockman's-Idaho Falls, Miller Ranch Beef, Mountain Life Team, Shawna Fuller-REALTOR, Homes By Tina Crow, Lynette Tingey real estate, Patty Laritz-Bithell-REALTOR, Moose Crossing Vacation Rentals, Outback Builders, Mary Johnson, Wanda Jensen, Brooke Unger, Lana Tadlock, Valerie Price, Mel Bingham, Star T Plowing, Clarissa Ball/Uptown Salon, Blue Buffalo Resort, Squatch LLC, Last Chance General Store, Island Park IT, LLC. and Old West Escapes.

If you are in need of assistance or know someone who is, please find our application for assistance on our website at [www.MountainLifeCharity.org](http://www.MountainLifeCharity.org). We are committed to helping those in need and charitable causes.



MLCF also hosted the Rally 4 A Cause live auction later that evening to support the Island Park Charter School in their search for a new location. The auction included cool prizes such as a Taste of Island Park, Snowmobile Gear Package, Angus Steaks,

and a Trip to Puerto Vallarta. Proceeds from the event brought in \$4900. Additionally, we raffled off a classic snowmobile in memory of Tom Kostreba. (As fate would have it, Tom's daughter won the snowmobile!) That raffle brought in an additional \$2800, bringing the weekend total for the charter school to \$7700.

You may recall our last event, the Festival of Trees. At that event we



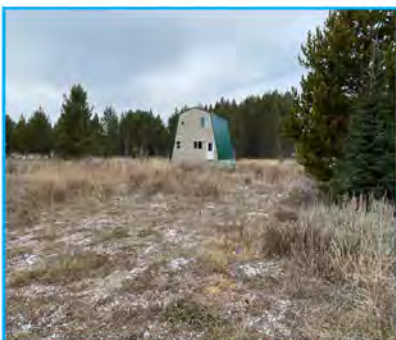
## Christie Cameron

Year Round Local Realtor  
208-351-0816

Christiecameron7@gmail.com  
Associate Broker



4135 Sawtelle Peak Road,  
Island Park, Idaho 83429



**Last Chance/Douglas Dr**  
RV lot, build rental cabin,  
No HOA, Sewer paid.  
\$110,000



**Red Rock Rd**  
47 acres - Borders Forest  
Service - near Henry's Lk  
\$1,250,000



**Macks Inn**  
Water, power, sewer, well  
house, bunkhouse, 3RV  
hookups \$299,000



**Last Chance Rental**  
5.46 acres - 4 bedroom  
suites, 5 bath  
\$1,350,000



**Ashton**  
.45 of an acre, shop and  
single wide, corner lot  
\$179,000



**Shotgun Lot**  
Camper lot  
Community Water  
\$99,000



**Yale Creek**  
1.75 Acres, Has septic and  
power, no covenants  
\$210,000



**Commercial**  
1.8 acre lot in Marysville/  
Ashton has a big shop  
\$289,000

**LAKESIDE RENTALS**

**LYNX** **208-558-9770** **ski-doo**

**can-am** **SEA-DOO**

### Equipment Rental Island Park

Lakeside Lodge

3857 Lakeside Lodge 208.558.9770

2023-2024 Winter Season Sled Rentals  
Beginning December 15th  
As weather allows

Ski-Doo Summit X 850 165 Turbo	\$420
Lynx Shredder 850 4100 Turbo	\$420
Ski-Doo Summit 860 165 / 154	\$299
Lynx Shredder 850 3900	\$299
*Ski-Doo Summit 600 154	\$269
*Ski-Doo BackCountry	\$249
Ski-Doo Expedition Sport 2up	\$229



Winter Clothing available to rent  
\*Can be converted to 2 seater upon reservation request.

### Island Park Adventures

3342 N Hwy 20 208.558.7581

Starting December 15th  
As weather allows

Expedition Sport 600 (2UP)	\$229
Summit SP 600	\$269
Summit SP 850	\$319

Winter Clothing available to rent

### High Mountain Adventures

4141 Sawtelle Peak Rd 208.558.9572

Beginning December 15th  
As weather allows

650 Switchback	\$249
650 Pro	\$249
850 Khaos	\$299
Full Snowmobile gear	\$ 35

**TARGHEE TRAIL RIDERS**

**ISLAND PARK, IDAHO**

This group is open to anyone that shares a love of this area and the trail systems. Email us at [TargheeTrailRidersIslandPark@gmail.com](mailto:TargheeTrailRidersIslandPark@gmail.com) to join. We have a Facebook group called Targhee Trail Riders Island Park Idaho where information regarding upcoming events and important announcements will be posted. *Please join today!*

**FUGONEE SNOWMOBILE CLUB**

**ISLAND PARK, IDAHO**

Join one and all, feel free to join both clubs. Both are supportive of the trails and the sport, and both will help maintain and keep our trails open.

Call or email:  
Kent Bateman  
ksb1@blackfoot.net  
208-715-1582

## Recreation Maps



Scan to download the Avenza Map App. Create an account, it's free. Find the Island Park Motorized Recreation Map, both North and South for all of the Island Park area. The also have a Caribou-Targhee National Forest Ashton-Island Park Ranger Districts Winter Recreation for a small fee. Find your trails and enjoy yourself. Please, don't forget, cell coverage here is difficult in most areas, don't count on it for your navigation. Use a paper map, or download your map to be sure you can use it.

# Not Your Grandma's Bingo and So Much More: Touching Lives in Many Ways!

If you've met Amy Beegel, you know you've met her. She is larger than life and full of vinegar! But, underneath it all, she is one of the most caring, giving people I have ever had the opportunity to meet. Amy was born and raised in Pittsburgh, PA by a mother that took her camping, fishing, and hiking in the forests there. Her high school track coach and his wife, Conan and Katie, were her inspiration for coming west. They frequently worked summers in Yellowstone and spoke of it often to Amy.

After applying for a summer job just after her senior year in high school, she moved west, and in her words, "fell in love". The romance included days hiking trails exploring and learning Yellowstone, and fishing around the park for several seasons from the position she accepted at Old Faithful Lodge in 1988.

The historic fire season in the park that first year created an environment of urgency and crisis. Amy's immediate response to assist a friend in need, leading to the entire loss of her own belongings, shows her deep sense of compassion and prioritizing the well-being of others over personal possessions and reflects a remarkable example of resilience and selflessness.



Amy and her Mother

Her acknowledgment that her personality might have led her to stay longer, potentially risking her life, suggested divine intervention and that a larger purpose might be in store. The ability to find a positive perspective after loss and upheaval is a testament to her strength and resilience at such a young age and likely helped to shape her life now, where Amy places an emphasis on human connections and empathy.

Several years at Yellowstone, and a few at Grand Teton National Park preceded a quick move to California before moving back to Pittsburgh to care for her ill Grandmother, to whom she was very close.

Amy's Pittsburgh experience working for a radio station during this time highlights her adaptability and suggests her capacity to thrive in fast-paced environments. Event planning, a skill she developed while working there resonated with her personality.

A move back to California came next. Amy seems to draw people in, they find her easy to speak to and her knack for interpersonal communication helped her to meet so many people, including some famous, such as Hugh Hefner and Dan Arnold. One of her regrets in life is not being able to keep in contact with them all, but she admits Facebook has helped her to reconnect with many!



One of her stories took me by surprise! Amy played professional women's football and travelled the country with the team from California. Tight end, kick returner, and safety were positions she played, usually for the full game on both offense and defense.

Amy has now been a resident in West Yellowstone for 24 years. Guiding tours in the park for the park service was her shoe in for creating her own tour business, Easy Tours. She takes great pride in having acquired her Interpretive Guide Certification in 2014, and keeps her First aid/CPR training current and up to date.

Continued on Page 12



**411 NORTH  
2300 EAST  
ST. ANTHONY,  
IDAHO 83445**

**The Door Man**

FOR ALL YOUR GARAGE DOOR NEEDS

**208-624-3657**



CALL OR EMAIL TODAY  
[service@idahodoorman.com](mailto:service@idahodoorman.com)

**ORDER A DOOR FROM NOW TIL END OF 2023, MENTION PROMO CODE "DOORMAN23" AND BE ENTERED FOR A CHANCE TO WIN A PRIZE RANGING FROM**

FREE DOOR TUNE UP,  
\$50- \$100 GIFT CARDS,  
RESIDENTIAL OPERATOR,  
RTIC COOLER,  
AND MANY OTHER COOL PRIZES

**USE TELEPHONE NUMBER  
(208) 252-5881**

**BOOK A SERVICE FROM NOW TIL END OF SEPTEMBER, MENTION PROMO CODE "PIONEER23" AND RECEIVE 10% OFF TOTAL INVOICE**

**OUR SERVICES**

- ✓ Preventative Maintenance
- ✓ Broken Spring Repair
- ✓ Broken Cable Repair
- ✓ Door Off Track Repair
- ✓ Panel Replacement
- ✓ Garage Door Opener Repair

**USE TELEPHONE NUMBER  
(208) 252-5881**

DRAWING WILL BE HELD ON JANUARY 2ND VIA FACEBOOK LIVE.

 **FOLLOW US ON FACEBOOK @THE DOOR MAN**



# IP Optics LLC

est. 2023



TROY ERICSON

Call/Text  
**208.965.1477**

---

IPOpticsLLC@gmail.com

REAL ESTATE/SHORT TERM RENTALS

## 3D Tours & Photography



# Christi Spinner

**KW** KELLER WILLIAMS  
REALTY EAST IDAHO

208-604-2153

Serving Island Park & All of South East Idaho



**5085 Taylor Mountain** Luxury living with rustic charm new build in Centennial Shores. Gated waterfront community, fully furnished & turn key. This cabin boasts 360 Lake & Mountain views, 5 bedrooms, 5.5 bathrooms (2 masters), fully landscaped yard front & back, granite throughout, custom cabinetry heated bath floors, forced air heat & AC, huge shop w/full apartment above. Very short walk to one of 3 private Island Park Reservoir accesses. Year around access.  
MLS#2158106 \$1,975,000



**5085 Trumpeter** Stunning cabin in a secluded and quiet lake front subdivision on Henry's Lake. Very successful vacation rental, fully furnished & sold "Turnkey". Take in the most beautiful lake, mountain, & sunset views, perched on a manicured corner lot, beautifully landscaped, firepit area, room for RV & huge deck wrapping the home. Large open kitchen, dining and living room for gathering & entertaining, attached heated garage for all the toys. World renowned fishing.  
MLS#2157924 \$1,375,000



**3425 Kestrel** Stunning 5 bedroom 5 bath home in Centennial Shores lakefront, gated community on 2.09 AC of pure serenity. Astonishing lake and mountain views from front and back decks as well as every room in the home. Multiple open space gathering areas with vaulted ceilings, 2 master suites, granite throughout and tasteful finishes with quality materials such as Anderson windows. Propane forced air furnace and central AC, cedar ceiling, double sided fireplace. Allows short term rentals and has year around access. Only 45 minutes to Yellowstone Nation Parks west gate entrance. Subdivision HOA includes 2 private boat docks and launch, marina an beach for Island Park Reservoir.  
MLS#2162233 \$1,499,000



**4216 Shoshone** VACATION RENTAL comes "Turn Key" with all furnishings! True log home in Island Park Village Resort & Golf Course. Beautiful cabin, offers a cozy fireplace, kitchen with great counter space & open flow dining room & living room for gathering. Vaulted ceilings, open loft with wet bar and master en suite. Downstairs game room with walk out basement. Perfect location for year around access.  
MLS#2157474 \$699,000



**3760 Cove Ct** Beautiful **WATERFRONT LOT** in gated Centennial Shores Subdivision. Outstanding Centennial Mountain, Island Park Reservoir, and unobstructed sunrise and sunset views. Allows for Vacation Rentals & Guest House in Addition to Main House. One of the last remaining!  
MLS#2153167 \$849,000



**1777 12<sup>th</sup> St, Idaho Falls** Charming, Cute, Cozy, Starter Home w/ ALL MAIN LEVEL LIVING. Centrally Located Near Many Amenities & Conveniences. This Home has 3 Bedrooms, 1 Bath, Off Street Parking Plus one Car Garage, Fenced Back Yard, Gas Forced Air Heat, Maintenance Free Metal Siding, Metal Roof & Updated Refrigerator. Home is Currently an Income/Rental Property.  
MLS#162467 \$239,000



**3802 Arange Peak Dr** GATED WATERFRONT COMMUNITY! 2 community Boat Launches w/ docks & an acre of manicured park, the South end w/ sandy beach for swim days. Vacation Rentals Allowed. Corner lot.  
MLS#2154889 \$239,900



**1670 Shadow Loop S.** 1.7 Acres  
MLS#2162519 \$355,000  
**4376 Granite Ridge** 5.5 Acres  
MLS#2162869 \$274,900

**Shadow Ridge Subdivision**, in Ashton. Gated Community, Creek Front lots, No Short Term Rental Allowed, Walking distance to World Class Fly Fishing, Year Round Access. Borders Public Land.



**910 McKinley Ave, Pocatello** This Townhome in Heritage Village is well maintained, cute, clean & MOVE IN READY! Centrally located in Pocatello, walking distance to schools, shopping & many other conveniences. New Forced Air Furnace w/ AC, Newer Refrigerator, Windows, Garbage Disposal, Water Heater & Water Softener. Plenty of storage, & a Storage Shed under Covered back Patio. Community offers common areas w/ Green Grass, Shade Trees, & Park Benches. HOA provides lawn care, snow removal, garbage, water & exterior maintenance. Professionally Cleaned.  
MLS#2162231 \$187,900



**ICE HOUSE CREEK** subdivision. Creek Frontage, woods and fantastic views. This subdivision is mostly 5ac + parcels so plenty of elbow room. Year Round Access, Option for Rental Use, Allows Horses, PERC test already done with standard septic approved.

**4067 St. Ryan's Way** 5.11 Acres  
MLS#2162502 \$295,000



**4179 Grandview Rd** Island Park Village Golf Course, Fully Furnished and Updated Vacation Rental, Amazing Views, 4 bedroom 4 bathroom, 2- car garage, 2464 Sqft, built in 2005  
MLS#TBD \$729,000

**OUTBACK REALTY**  
**New Listing**  
**\$835,000**

**BEAUTIFUL VIEWS OF HENRYS LAKE**



**Call Jackie Jensen**  
**208-390-8303**  
**For all Island Park Property information**

- 3 Bath
- 4 bedrooms
- Garage
- 2688 sq ft
- Lakebreeze Drive

# Caldera Restaurant Days and Hours

**Anglers Lodge & Riverfront Restaurant**  
 3363 Old Hwy 191 208.558.9555  
 Thurs, Fri & Mon 3 pm - 9 pm  
 Saturday & Sunday 12 pm - 9 pm

**The Grill @ The Blue Buffalo Resort**  
 3402 N Hwy 20 208.220.7896  
 Monday - Saturday 11 am - 7 pm

**Cafe Sabor**  
 4298 Hwy US-20 208.558.9300  
 Wednesday - Saturday 11 am - 9 pm  
 Sunday 12 pm - 8 pm  
 Closed Monday and Tuesday

**Connie's Restaraunt**  
 4130 Quakie Lane 208.558.6987  
 Sun & Mon & Thurs 11am - 8pm  
 Tues & Wed Closed  
 Fri & Sat 11am - 9pm

**Happy Anglers Cafe**  
 3340 Hwy 20 208.497.9455  
 Closed for Season  
 Call or message for baked goods

**Lakeside Lodge**  
 3857 Lakeside Lodge Lane 208.558.9770  
 Daily  
 Lunch 11 am - 5 pm  
 Dinner 5 pm - 9 pm  
 Bar 10 am - Close

**Meadow Creek Lodge**  
 Meadow Creek Road 208.351.2787  
 Friday - Tuesday 10 am - 5 pm  
 Closed Wednesday and Thursday

**The Parlor at Mack's Inn**  
 4169 N Hwy 20 208.558.2450  
 Tuesday - Saturday 11 am - 9 pm

**Pond's Lodge**  
 3757 Hwy 20 208.558.7221  
 Sunday - Thursday 11 am - 9 pm  
 Friday and Saturday 11 am - 10 pm

**Springhill Suites Island Park**  
 4292 N Highway 20 208.558.2400  
 Thursday - Monday 4 pm - 10 pm  
 Closed Tuesday and Wednesday

**Subway**  
 4141 Sawtelle Peak Rd 208.558.9884  
 Closed for the season

**Phillips Lodge- The Lodgepole Grill**  
 3907 Phillips Loop 208.558.9379  
 8 am - 8 pm  
 Closed on Wednesdays

**Trouthunter-Last Chance Bar & Grill**  
 3327 Hwy 20 208.558.8006  
 7 days a week  
 8 am - 8 pm

**Veteran Owned and Operated**  
**Konrad Menk 208-201-8883**  
**Owner Contract # RCE-60873**



Services  
 -Basic and Complex Septic Systems  
 -Excavation  
 -Site/concrete prep  
 -Utility Services  
 -Demo and much more

Defendersdiversifiedllc@gmail.com  
 Defenders Diversified LLC

**MOUNTAIN LIFE CHARITABLE FOUNDATION**






**ABOUT US**

The Mountain Life Charitable Foundation was formed to give back to the community we all love and build an even better town for future Island Parkers. We are fundraising to establish a fund to support residents facing hardships, and to grow an endowment for a community housing program. We will also host or sponsor events to support other local organizations.

**CONTACT US**  
 (208)-860-4846  
 PO Box 441  
 Island Park, ID 83429



MountainLifeCharity.org  
 Info@MountainLifeCharity.org



# The Harriman's: Island Park Legends

*Continued from page 1*

One of the new routes Harriman insisted upon was inspired by his 1905 stagecoach ride for an invited visit to Yellowstone National Park. He found the trip miserable and wanted to take advantage of the growing needs of visitors to the park for better transportation. It was then that the Yellowstone Branch was planned from St. Anthony to West Yellowstone and four years later the seventy mile stretch was completed. This was his first experience in the Caldera, and being an avid outdoorsman, it was inspirational.

Now, a little backfill on the Idaho Ranch. Four officials from the Oregon Shortline, which was formed by the Union Pacific, had been lured to Island Park in the 1880's due to it's reputation as a hunting and fishing paradise. As a group, they purchased the Thurburn homestead in about 1898, and formed the Island Park Land and Cattle Company shortly thereafter. The articles of incorporation stated the goals of the company were to raise, purchase, sell and deal in any type of livestock that was legal. Thus setting the stage for a sporting retreat as well as a ranch environment.

By the end of 1906, the ranch had changed ownership interests a number of times that are undocumented, but, three Guggenheim brothers and Silas Eccles were now the proud owners of 4 lots within the ranch, a couple of cabins where the present building compound is for Harriman State Park, and had controlling interest of the cattle company.

Silas Eccles had switched employers to Union Pacific, and it is assumed that E.H. Harriman heard of the property through enchanting description from him. In 1908, Silas negotiated for him to purchase Murry Guggenheim's lot and shares.

His Idaho ranch was not his first major personal land purchase outside of the railroad business. The ranch numbered along purchases like large acreages in Orange County, New York, where he built the family



*Harriman New York Family Estate: Arden*

estate, 300,000 acres in East Tennessee, large tracts of oil rich land in Texas, property at the end of Klamath Lake in Oregon accessible only by boat that he made his summer residence.

Harriman was not satisfied with the small share of the ranch but he could not convince the other two brothers to part with theirs. After some searching, he found the Osborne homestead that had been established in 1881 just on the east side of the Henry's Fork River. He asked Eccles to negotiate the purchase for him, assuming a more lucrative deal could be accomplished if the Harriman name were not involved, and eventually successfully negotiated the sale of this for the fall of 1909.

In a very sad turn of events, E.H. Harriman never had the opportunity to visit the ranch, nor see the purchase of the Osborne homestead through to the end. The stress of his occupation had caused his health to decline rapidly, and on Sept 9, 1909 he passed from stomach cancer. He left his entire estate, \$70M (the equivalent of \$3B today) including the Idaho Ranch, in a very short nineteen word will, to his wife Mary. It was a testament to his admiration for her business skills and intelligence.

Mary actualized Harriman's dream and completed the purchase of the 325 acres Osborne Homestead with the stage stop, commercial fish farm, and home, which became the Harriman family retreat and was always referred to as Harriman East Ranch. It was the year her oldest, Averell, then 18, first visited the ranch.

Two years later, Mary made the trek, with three of her children, Carol (22), Averell (20), and Roland (16), across the country to see the ranch. It was love at first sight, the fishing, hunting and riding were among the favorite memories, as was the lore of being a cowboy and it enticed them back summer after summer. It was during that visit she negotiated to purchase Daniel Guggenheim's lot to add to their growing family retreat.

The ranch, in it's early years, focused more on land acquisitions than it did on the cattle business. They did have cows, Jersey dairy cows and about 250 head of Herefords, or the boys would not have been so enamored with being cowboys year after year. But the families focused on purchasing additional land to shield them from neighbors, gain exclusive water rights, and add prime hunting and fishing opportunities, even if the land was deemed less than desirable. Shotgun Valley became the target of their endeavors and they negotiated several dozen land deals to piece together their large holdings.

The Bishop Ranch, one of the first, purchased in 1916, was coveted for the lake and exclusive water rights. The bonus was the elk herd that accompanied that purchase. The story was, during a hard winter, the bishops had fenced in a small number of elk and by 1900 that herd had grown to nearly 100. They transferred the elk to the Thurburn homestead by sleighs with large racks after trimming the antlers that wouldn't fit, they were released into a 1,000-acre pasture with a seven-foot fence.

After the purchase, it was determined John Bishop had placed his fences wrong, and the entire lake did not belong to him, thus negotiations with the neighboring Salley's to purchase theirs began. Eccles



felt they had been cheated in order for Salley to hold out for more money. It took two years to negotiate the price of \$22/acre for the 160 acres, but in 1918 they sealed the deal and it, along with the Bishop, Ritchie, McGinnis, Laird, and some state land acquisitions, became know as The Sheridan Ranch.

Silas Eccles passed shortly after the purchase of the Salley land, leaving only the Guggenheim's and the Harriman's as partners in the cattle operation and the land holdings. Averell, the eldest, had a busy business life and blooming political career, so left much of the ranch operations to Roland. Averell visited the ranch often, and even developed the nations first major ski resort at Sun Valley.

*Continued on page 16*



**14 YARD DUMP BEDS**

Available for all your construction material needs whether you need product hauled to you or you need construction waste hauled away,

**Give us a call today!**

**208-569-4763 or 208-351-7058**

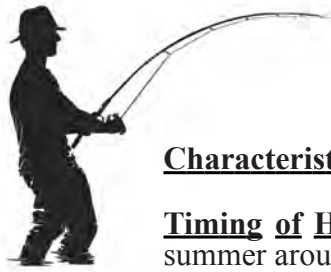
**Electric**

**208-351-7058**

**Electrical Contractor**

Serving all of Southeast Idaho

# Peak Fly Hatch for January



## Blue Winged Olive (*Baetis several species*)

**Characteristics:** Two tails. Light to medium olive/gray body with light to medium gray wings..

**Timing of Hatches:** Mid-March through early May during afternoon hours and in the mid-summer around dusk & September through October during afternoon hours.

**Habitat:** Widespread on most sections of the Henry's Fork, Madison, Firehole, South Fork of the Snake, and other local rivers and tributaries.

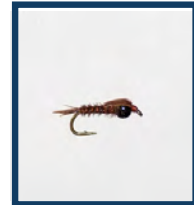
**Comments:** Many species are multi-brood, meaning a species may produce two or more broods during the calendar year. They are classified as swimmer nymphs. The most important species emerge in the spring and again in the fall. These mayflies produce exceptional dry fly fishing during these periods. Egg laying spinners often crawl under the water to oviposit their eggs.

**Patterns:** Pheasant Tail Nymph, Halfback Emerger, CDC Emerger, Paracripple, BWO Soft Hackle, BWO Nohackle, Sparkle Dun, Thorax, and Parachute Adams

**Hook Sizes:** 18, 20 & 22



### Suggested Flies



Cocktail Nymph



Harrop Last Chance Cripple

# First Street

## PLUMBING & HEATING

**Voted Best of Best**  
**2020-21-22**

**Google** Over 100 Reviews

[www.FirstStreetPlumbingCenter.com](http://www.FirstStreetPlumbingCenter.com)

**Service • Repair • Installation • Parts • Plumbing**  
**Heating • Water/Sewer Line • Water Heaters**  
**Softeners • Sewage**

# 208-522-6896

**345 1st St • Idaho Falls • Since 1942**

# The Riding Clubs of Island Park: Bettering Our Trail Systems and Our Lives

*Continued from page 1*

This year, the fundraiser was great, I attended. The money they raised will again be donated to search and rescue to put tracks on their side by side for winter rescues, a definite requirement for our area!

The newer club was founded in 2019 by Brett Whittaker, but was fairly inactive until recently. This year they hosted their first Fundraiser at Lakeside Lodge on the 17th of February, and what an evening it was. They packed the house, and the door prizes, live auction, and raffle items were phenomenal.

The Targhee Trail Riders plans to use these funds to save our forest service trails and provide input for enhancing that trail system.

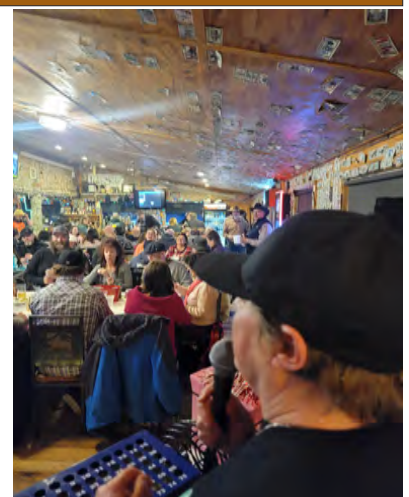
They met with forest service personnel some months ago and learned about the upcoming plan in the next couple of years. In 2012, the forest service released its new planning rule to be used in managing all lands they controlled. You can find and read this here: [www.fs.usda.gov/Internet/FSE\\_DOCUMENTS/stelprdb5362536.pdf](http://www.fs.usda.gov/Internet/FSE_DOCUMENTS/stelprdb5362536.pdf), or for an abridged version that is easier to read, here: [www.fs.usda.gov/Internet/FSE\\_DOCUMENTS/fseprd520671.pdf](http://www.fs.usda.gov/Internet/FSE_DOCUMENTS/fseprd520671.pdf).

Currently, they are working in the Challis, ID area to determine the

next ten-year plan for that area, when completed, they will be moving to the forest in the Caldera. The rules they will apply require “best available scientific information”, which includes input from environmental groups, the ranching community, industry that uses the forest service, and other public interest groups. This would include riding clubs like these!

During the planning phase, they will determine how many miles of trails they will maintain within the forest, and where those trails will be located. The Targhee Trail Riders believe input from those that know the forest and the trails will determine how we get to use the forest, or not use the forest, in the upcoming years.

I would urge all of you, pick a club and join, or join both! Support the groups that advocate and protect our rights to use the forest and help in improve the experience.



# Get Your Sleds Ready!



We're working to help build a better Island Park! Keep up with us on Facebook or our website.

MountainLifeCharity.org



ipIdaho.com



**Kristen Andelin**  
Kristen@IpIdaho.com  
(208) 360-8850



**Tina Crow**  
Tina@IpIdaho.com  
(208) 573-8304



**Troy Ericson**  
Troy@IpIdaho.com  
(208) 965-1477



**ICE HOUSE CREEK SUBDIVISION | 3900+ sq ft | 5 bed & 4 bath**

2825 Morning Dew Dr  
MLS # 2162050  
\$1,445,000



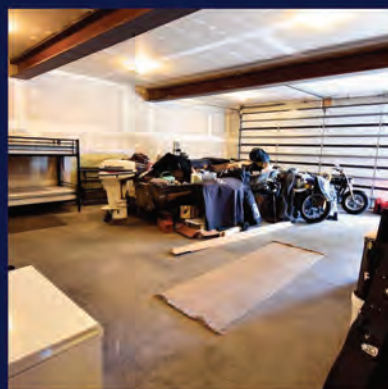
**NEW SUBDIVISION**

4930 Alpenglow Way  
MLS # 2152906  
\$372,000



**COMMERCIAL PROPERTY | Shop with apartment and adjacent lot | Combined 6.9 Acres**

3783 Blue Heron Ln  
MLS # 2155644  
\$650,000



3784 Blue Heron Ln  
MLS # 2155638  
\$399,000

**Looking to buy or sell?**

Contact The Mountain Life Team  
**GoTeam@IpIdaho.com**  
(208) 534-6775



**Shawna Fuller**  
Shawna@IpIdaho.com  
(208) 731-3688



**Patty Laritz-Bithell**  
Patty@IpIdaho.com  
(208) 846-4846



**Lynette Tingey**  
Lynette@IpIdaho.com  
(208) 851-8474



# Not Your Grandma's Bingo and So Much More: Touching Lives in Many Ways!

*Continued from Page 6*

As a testament to her spiritual soul, she carries two prayer cards with her when she is guiding. The wallet-sized memorials are both people she connected with in the past that are no longer with us for varying reasons. The impression she made on them resonated with their families and that knowledge remains with her.

She still maintains a life of volunteer work. Throughout the years Amy has given numerous hours to great causes, some of which are Jerry's Kids, the Special Olympics, an Orphanage in Mexico and the Susan B Anthony Breast Cancer Foundation. Her willingness to donate her time has also extended to all of us in the Caldera as well, I don't think she has ever turned down a request to call bingo for a fundraiser, and she always donates her time, you heard me correctly, donates her time.

Amy calls bingo as a result of playing with her grandmother as a youth, she even still has her bingo bag and chips. Hence the name, Not Your Grandma's bingo. Anyone that has attended one of her events knows her raw, playful, and funny take on what most consider to be a game played by an older generation. She packs the room, regardless of whether it is her usual winter Wednesday night, or one of our fundraisers.



This kind soul living among us wants nothing more than to be the shoulder people lean on. The first person we think of when help is needed. After meeting Bonnie Raitt while attending her concert, she described Amy as a Jack-ess of all trades. I would suggest she is not only the master of the trades she has chosen, but also sets such a glowing example to the rest of us

Her heart and soul have always been here, sometimes she jokes she should leave and get a "real" job with benefits, but can't tear herself away. What a loss it would be if she ever could, and what a privilege it is to have her in our midst.

**EAST SUMMIT**  
EXCAVATING

SERVING EAST IDAHO

EXCAVATING, GRADING, SEPTIC

Call or Text for a Free Quote

**(208) 569-6017**



Need an escape from mud season or the winter? Pass Christian, MS might be the spot you want to visit.

Check out [JEWLVacations.com](http://JEWLVacations.com) to book this beautiful home directly, and come enjoy the heated pool and some southern hospitality!

Want some extra info? Call me, Jen Lower, at 406.209.0022



**ASAP SEPTIC PUMPING**  
**208-390-7559**

**Full time Septic Pumping In Island Park**  
**Tank Locating, Digging and Inspection**  
**for STR and Real Estate Sales Inspection**  
**24 Hour Emergency Services**  
**LOOK FOR THE BIG RED TRUCK**  
**Asapumping.com**

**I SAW THAT**

CUSTOM CHAINSAW CARVING  
TREE REMOVAL  
MISC. CABIN REPAIR

**AL PARKS**  
CALL/TEXT FOR FREE ESTIMATE  
**208-200-9404**

# The Beauty that Surrounds Us: Through the Eyes of Visitors

By Tom Bithell

Living in Island Park can make you take for granted how lucky we are to live here. After all we get to regularly see the sites like Mesa Falls and Big Springs - two of the Seven Wonders of Idaho - and tend to forget how majestic they are.

However, when I show family and friends around Island Park, especially those from far away that have never been here, it reminds me of how lucky we are to be here.

I recently took a friend from Florida and his friends from South Carolina out snowmobiling and it was so much fun just being with them and soaking up their enthusiasm. It makes me feel so good to see how in awe they are of everything - the vast forest, the frozen lakes, the mountain views and our winter wonderland. Especially people from the South. They don't see much snow and many that come here have never snowmobiled before. The whole experience to them is something unique and new, and it makes me appreciate Island Park that much more myself.



Depending how comfortable and competent they are on the sled, we'll often do some boon-docking on our shortcut trails and maybe a cut across Island Park Reservoir. Sooner or later someone gets stuck and it's amusing - albeit the typical tiring work - to see the situation. They really have no idea where to begin in getting a snowmobile unstuck. Often they try backing up hoping to get out, but just make it worse.

Visitors always have a lot of questions about what it's like to live here, how we manage with the snow, what people do for a living here, and how we ended up living here. They look at us as a different breed of people for our knowledge of the trails and abilities to snowmobile everywhere. "I would be so lost out here. How do you know how to get around? It's such a huge area".

I had some cousins from Massachusetts visit a couple of winters ago to go snowmobiling. They have snowmobiled in New Hampshire, Vermont and Maine, so they're not new to it. But they were amazed

how large Island Park is, and how many miles of trail and riding there is. Back East there is not a lot of open riding available. They have to stay on trail systems and those systems are relatively small compared to what we have here. One of them remarked to me, "it seems like everything is 20 miles in between".



I almost always take people to Meadow Creek Lodge for a burger and fries. The fact that you can only get there by over the snow vehicles makes it so cool to visitors. Of course, eating out is something everyone wants to do on vacation and the fact that we can snowmobile anywhere to eat is part of the cool experience.

Big Springs, Mesa Falls and West Yellowstone are other favorite places to show visitors. People love seeing a state border in the middle of the forest on a snowy snowmobile trail. Most state border crossings are on busy highways. Here we have several remote crossings with Montana and even Wyoming.



In Winter we are blessed with a lot of events and activities. Bingo games in West Yellowstone are always a hit with visitors. A couple of years back we were able to take my cousin from San Diego to Bingo in the Shotgun Bar Limousine. What a treat that was for him. He felt like a VIP.

Then there are the weekend nights with live bands at Lakeside Lodge and Shotgun Bar. The places get packed with snowmobilers from all over and it's like a brotherhood of friends. Just another Island Park weekend for us.

We have some future family visits from Massachusetts and Virginia coming to snowmobile. They have seen the pictures and videos of our snowmobile adventures and they can't wait to go. My ambition is to eventually get as many of my cousins from around the country as possible to come and experience our winter wonderland.

Through my years of snowmobile guiding I have taken people from



Illinois, Indiana, Missouri, Texas, Oregon, Utah, Arizona, Alabama, Texas and Florida on snowmobile tours. I never did it as a means to pay the bills. It buys the gas, oil and food on the trail, but it's nothing that'll get you rich. I did it because I love snowmobiling myself and for the pleasure of showing people around. I hope to be blessed with many more years of meeting new people and showing them Island Park.




**Integrated Wellness, LLC**  
208-549-9970

*Melissa Child*  
PhD, MSW, LMSW

Mental Health Services  
in Island Park or via Telehealth



# OutBack Realty

Call Us Today!



Your Premier Office

(208) 558-9500



**Jamie Phillips**  
208 221 2647  
Broker



**Jackie Jensen**  
208 390 8303  
Realtor



**Riley Hoyle**  
208 351 6705  
Realtor



**Monika Boyce**  
208 240 2717  
Realtor



**Christie Cameron**  
208 351 0816  
Assoc Broker



**Gay Johnson**  
208 351 5204  
Realtor



**Gary Dawson**  
208 351 3054  
Realtor

[www.outbackrealty.com](http://www.outbackrealty.com) ~ [www.islandparkrealestate.com](http://www.islandparkrealestate.com)



**Mack's Inn \$299,000**  
3 RV spots ~ Bunkhouse  
Water, Sewer, Power,



**Shotgun - \$519,000**  
Completely Remodeled  
2 bed / 1 bath / STR



**Ralph T.- \$495,000**  
3 bed / 1 bath / 1/2 Ac  
Rental potential - Garage



**Commercial Property**  
4 Condo Units / 2 Acres  
30 X 64 garage / \$1.95M



**Last Chance - \$1.35M**  
5.46 Acres  
4 bedrooms / 5 bathrooms



**Henrys Lake - \$835,000**  
4 bedroom / 2 bathrooms  
attached 2 car garage.



**Red Rock - \$1.25M**  
47.16 Acres - Views!  
Backs Forest Service.



**Commercial! \$1.2M**  
1.7 Acres  
Boondocks Restaurant



**Shotgun \$360,000**  
2 bed / 1 bath / .4 Acres  
Backing Yale Creek



**Macks Inn \$549,900**  
2 bed / 2 bath / 1/2 acre  
2 sheds / oversized garage



**Last Chance - \$3.49M**  
Laundromat  
10 hotel rooms / 4 cabins



**Gravel Pit \$750,000**  
Commercial Property  
4.38 Acres

**Stonegate \$299,900**  
3.51 ac building lot  
Great year round access

**The Woods \$279,000**  
3.04 ac building lot  
Heavily Treed

**Shotgun \$99,000**  
.3 acres / 1/2 in Water  
Rentals & RV's allowed

**Yale Creek \$225,000**  
1.75 acres ~ Rv Lot  
Septic & Power

# Events this Month



**69** NOT YOUR GRANDMAS BINGO

**B I N G O**

## NIGHT

10 GAMES + BLACKOUT  
ALL FOR CASH  
PRIZES

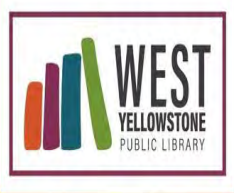
**4**

EVERY WEDNESDAY STARTING  
12/20/23 ~ 3/6/24

Regular bingo packet 3 cards for 10 games @ \$20  
\$2 per card for Blackout  
\$2 entry fee. must be 21 to play

Plenty of seating with over 300 seats!  
Game room, full bar and restaurant

FOR MORE INFO VISIT [West Yellowstone Bingo on Facebook](#)  
Yellowstone Beer Company 121 Madison Ave 406-646-7621  
<https://yellowstonebeercompany.com>



### WEST YELLOWSTONE PUBLIC LIBRARY:


Library Hours:

Tuesdays, Thursdays, and Fridays 10:00 AM - 6:00 PM  
Wednesdays 10:00 AM - 8:00 PM  
Saturdays 10:00 AM - 2:00 PM  
Closed Sundays and Mondays

Free Spanish-to-English Classes:

Beginner Level: Mondays and Fridays at 5:00 PM  
Intermediate Level: Mondays and Fridays at 6:00 PM  
Lego Club: Tuesdays at 3:15 PM  
Pre-K Storytime: Wednesdays at 11:00 AM  
Chess Club: Fridays at 4:00 PM

West Yellowstone Public Library  
23 Dunraven Street  
West Yellowstone, MT 59758  
(406) 646-9017  
<https://westyellowstonepubliclibrary.org/>



**2**

SATURDAY, MARCH 2, 2024 AT 7 PM  
**Layne Bowen**  
3857 Lakeside Lodge Lane, Island Park, ID, United States, Idaho 83429



**9**

SATURDAY, MARCH 9, 2024 AT 8 AM - 10 PM  
**March 2024 Kids 'n' Snow**  
Destination Yellowstone



**9**

SATURDAY, MARCH 9, 2024 AT 7 PM  
**Scratch!**  
3857 Lakeside Lodge Lane, Island Park, ID, United States, Idaho 83429



**Lakeside Lodge 3rd Annual  
Food & Libations Event**

March 16<sup>th</sup> 2024  
6:00pm-9:00pm

**16**

SATURDAY, MARCH 16, 2024 AT 6 PM - 9 PM  
**3rd Annual Food & Libations**



**TUESDAY  
03.12.24**

**START AT  
11:00AM**

**POVAH CENTER  
UPSTAIRS**

## BLOOD DRIVE MARCH 12TH

Step Up and Save Lives!

By joining our blood drive, you really have the power to save lives and make a meaningful impact on OUR community.

TO MAKE APPOINTMENT VISIT:  
[WWW.REDCROSSBLOOD.ORG](http://WWW.REDCROSSBLOOD.ORG)  
OR CALL OR TEXT :  
Lindsey Charlton 931-551-1520

# The Harriman's: Island Park Legends

*Continued from page 9*

The ranch had never been profitable, by 1927 it had cumulative losses of \$226,00 and by 1935 that number was \$598,000. They had several administrators during this time, and they all attempted to implement different strategies to mitigate losses.

Early on, 1921 to 1928, James Anderson laid off men, lowered meal expenses, and even went so far as to sell and kill off the horse herd before winter to conserve on hay expenses. Anderson also introduced sheep to the ranch, and cared for the elk from the Bishop purchase and 6 bison they had brought over from Yellowstone Park.

From 1928 to 1935, Sam Trude did his best to control spiraling spending and reap a profit. It was so bad, the ranch quit ranching. Trude sold all the livestock save a few horses and 18 head of cattle, keeping only a skeleton crew employed. The sale of 150 head of elk proved to be a problem. Rumor has it, rather than feeding them, they made a deal with Idaho Department of Game to release them back into the wild.

The ranch would return to ranching in the years that followed. The first attempt was sheep again, but turned to cattle quickly, that being the lore that enticed the boys originally. The only sheep kept after 1935 were a few for the dining pleasure of guests.

Sam Clark Sr. took over management at the end of 1935, he was a rancher, and had unique ideas to implement. He and his son, Clark Jr., were the only managers to run a relatively break even ranch, although the numbers were supplemented by wise investments made by Averell and the Guggenheims to offset some of the losses.

Utilizing the railroad, and the Yellowstone Branch, Clark Sr. began purchasing one and two-year-old steers from Texas. They would buy them early spring, fatten the two-year-olds to sell late fall, feed the one-year-olds over the winter, and start again in the spring. Clark Jr. would add cow/calf pairs to this when he began management in 1950, and by 1954, they boasted a herd of 199 cows and four bulls.

1949 brought the death of the last Guggenheim brother, and his heirs sold to the Harriman's by 1954. The ranch took on a partner that year by the name of Charles Jones, and reorganized the cattle company to create better tax shelters for the owners. Island Park Land and Cattle Company remained in place, but a new business, Railroad Ranch Cattle Company was formed.

Ben Meese, who was the new manager in 1960, smartly determined wintering cattle in Island Park was just plain hard. He leased feed lots in Roberts and cattle drives were a hit with the locals and owners from then until 1971 when they began trucking them down. This eliminated the need to put up hundreds of tons of hay each summer.



Throughout the ownership from 1898 to the end, all of the owners had a mind toward conservation. In the beginning, it may have been selfish, for their own sporting pleasure.

They created Silver Lake early on and stocked it with 10,000 fingerlings a combination of Rainbow trout, and the non-native Eastern Brook trout. Such an act would have been questionable now as there were not screens to prohibit the non-native fish from entering the Henry's Fork.

In the 1930's, they were plagued with poachers and trespassers. It was suggested that they create a sanctuary of the river and an eighth-mile strip on each side to prevent this. It was dismissed, as it would prohibit the Guggenheim's and Roland from fishing as well.

The trespassing became a larger problem when they sold 3,928 acres to BLM to create Island Park Reservoir for \$66,000. When filled, it provided direct access to the shores of the Sheridan Ranch and the rest of company land. They resorted to purchasing and leasing additional land so all land between forest service and the ranch was privately owned to reduce the number of incidences.

In 1941 a small flock of Hungarian partridge were released, also non-native, in conjunction with Idaho Fish and Game to add to the sport birds already present. They planted Siberian Pea, Golden Willow,

Ponderosa Pine, Douglas Fir, and Blue and Norway Spruce in 1945 as they had in the early 1900's. But their biggest push for conservation was to keep poachers and trespassers at bay, suggesting the conservation effort was for the owners' pleasure rather than the wildlife habitat.

Somewhere in the late 40's and early 50's their ideas about conservation began to change. It had taken nearly five decades, but the thought process was beginning to be more about the wildlife and less about the sporting activities. In the late 40's, the bird sanctuary was placed on the section of Henry's Fork that ran through the ranch. This prohibited bird hunting, including the rights of the ranch owners, and closed fishing to all during migratory bird nesting season. Roland attempted to reestablish a big game sanctuary on and around the ranch in 1956 with Fish and Game with no success.

In the late 50's they also participated with Fish and Game in cleaning the trash fish out of the reservoir and donated money toward fish conservation research. They planted more trees, and worked diligently to remove the algae and weeds from Golden and Silver Lakes.



The largest move towards conservation came when Charles Jones sold his interest in the ranch to the Harriman's, allowing Roland and Gladys to finish negotiations with the state. They signed the agreement at the end of 1961 donated the ranch to the State of Idaho upon their death.

Roland's health took a turn for the worse in 1976, a decision was made to turn the ranch over early. By the end of the year, the cattle were all sold, and the ranch crew was disbanded, each with two horses as gifts. On April 1, 1977, they turned the ranch over to the state, thus ending 80 years of private ownership.

Some of the negotiated conditions of the donation were, the name "Harriman State Park", no hunting or trapping from Thurmon Ridge south to Green Canyon, the bird sanctuary had to be maintained, they would pay Fremont County fees in-lieu of taxes, fly fishing only would be permitted, and a professional Parks and Recreation Department in Idaho would be established to maintain the asset.

The planning stage took several years. Golden and Silver Lakes were closed permanently to fishing, and discussions regarding the best avenue for sharing this amazing gift with the public without damaging the ecosystem began. The Railroad Ranch main shop burned to the ground in 1978 which prompted construction of a headquarters building, new shop and residences for the staff near Green Canyon Road. Finally, on July 17, 1982, Harriman State Park was officially opened for visitors, and that winter opened for cross country skiing.

The gift was considerable, and cannot be matched. 14,700 acres of forest and meadows with six miles of the Henry's Fork River flowing through it. \$510,000 in trust for 20 years from the sale of the Lima Ranch in combination with a \$75,000 life insurance policy for management. \$5M in matching federal funds to develop Harriman and Eagle Island State Parks, as well as add handicapped facilities in thirteen other state parks. And, the most important Trumpeter Swan winter habitat in the lower 48 states.

Hikers, bird watchers, photographers, and the curious can now traverse nearly twenty miles of trails within the park, or step back in time by visiting some of the ranch buildings. You can also take a historical tour with a ranger for a more detailed look. There is no splashy advertising or signage to lure travelers into the park, but you can find your way there. Harriman hosts a number of activities all year long, check their website, then come enjoy Island Park's crown jewel.



*E. H. Harriman*



*Mary Harriman*



# 2024 Auditorium Vote

## Resources better spent elsewhere?

In the last several issues I have touched on several key points in considering how you will vote for the Auditorium District when it is placed on the ballot again. This was such a heated topic when it was placed before the community before, and with little time to educate ourselves, there was so much confusion.

One of the items that is of concern, is allocating a resource, the additional taxation of short-term rentals and hotels, to a specific purpose that cannot ever be undone. The law that pertains to the use of the funds collected in this district are very clear. Funds cannot be diverted to other projects the community may deem more necessary at any time in the future.

When it was proposed to the community last year, the proponents suggested that they could raise nearly \$3M a year from the tax. That would pay for the building and maintain it, presumably, forever. However, if there were funds left over from year to year, they cannot be applied to other community needs.

Can you think of other areas that would be well served with additional funding? The Island Park Charter School has a grant they can use to build a new building, but they have to purchase the land. Is that a better use of our resources? Would there be a need for funding for street repair, street lighting, upgrading our medical facilities, or further helping our EMT's?

What will they do when the building is paid for, and they have reserves, large reserves, every year? Will they expand the building? Their plans previously were 10,000 square feet, how much bigger would they eventually make it? Would they use it to attract events, thus bringing more tourists into the area? If none of these were to happen, would they simply collect it and not spend it?

Let's not forget, when you vote for the Auditorium District, it takes no less than 3,000 signatures to disband it. The area they designated for voting purposes has less than 1,000 votes currently, so it cannot be undone.



On a more positive note, in the last several months, our little community has proven our ability to fund raise, in a very big way! We have several non-profit 501C3 organizations that have the ability, and the talent to help raise funds to assist with a community center. It would be a solution to involve everyone that was in favor of a community center, without creating a new taxing entity. It would also, potentially, leave the resource available for other community needs.

West Yellowstone is a prime example of using their resources and taxing systems to build funds that the community can vote to spend in areas of need. It isn't earmarked for one particular use only, and decisions can be made and remade as needs arise. It would be advantageous to go back to the table with our state Representatives and find solutions that are malleable in the future as our needs change and grow.

### Open Year Round

### Restaurant

Lunch 11am-5pm  
Dinner 5pm-9pm

### Tavern

Full Bar  
Pool Table  
Shuffle Board

### Lodging

Cabins  
Motel Rooms

### C-Store

Cold Beverages  
Clothing  
Gifts

Miller Ranch Beef

### Lakeside Rentals

9am-5pm

Reserve your rental online today!



208-558-9770

SEA-DOO BRP Can-am BRP ski-doo

### UPCOMING EVENTS

- Feb 24th- Dalton Dummer 8pm
- March 2nd- Lane Bowen 7pm
- March 9th- Scratch 7pm
- March 16th- Food & Libations

#### Food & Libations 2024

- Roasted Beet & Goat Cheese
- Gateau' with Chili Candied Marcona
- Almonds Bacon Lardons & "Pama Liqueur" Syrup  
XXX
- "Willies Huckleberry Snowcrest Vodka" Cured Idaho Rainbow Trout with Smoked Trout Roe Sour cream on Crispy Endive  
XXX
- "Roku Gin" Steamed Green Lip Mussels Meuniere' with Parsnip & Fennel Fricassee  
XXX
- Chargrilled Carved Miller Ranch Tomahawk of Beef with "Devil's Brigade" Sauce au poivre Truffle Idaho Potato Gratin  
XXX
- Herb Roasted Bison N.Y. Strip with "Basil Hayden" Toast Sauce Perigourdine Three Cheese Crostini & Arugula  
XXX
- "Hornitos" Crispy Qual Legs & Cilantro Chimichurri  
XXX
- "Willies Coffee" Crème Brûlée  
XXX
- "Luxardo Liqueur" Cherries Jubilee  
Vanilla Bean Ice Cream

Featuring The Musical Stylings by Nate Solo

\$65 Per Person  
Plus Tax & Gratuity



We Proudly Serve  
Idaho Grown  
Miller Ranch Beef



www.lakesidelodgeandresort.com

# The Annual Hockey Tournament at Lakeside Lodge: The Challenges and Successes

Every year brings a different challenge when making an Ice Rink, the crew is usually fighting mother nature. It's not quite as easy as filling a pond and letting it freeze over, it requires quite a bit of babysitting!

After decent snowfall they push snow to the borders and lay down a tarp to then flood the rink. Once the ice is frozen snow must constantly be removed and is pushed to the sides. Eventually, hose it all down to turn it into slush and compress it with plywood boards to create the sidewalls.

This year's challenge was mild temperatures, even pushing 50 degrees little over a week before tournament. That was followed by constant snow which can be the biggest enemy insulating the ice and creating soft slush layers.



There was a lucky slight window with snow ending 6:30 Friday before the tournament and temperatures in teens overnight that provided the opportunity to spray a new layer and even out the rink. Even then, it froze solid just before tournament scheduled to start.

The players that enter the tournament are what make it all happen. They show up in good spirits and recognize the issues faced in this environment to make skateable ice. This year there were six teams entered

The tournament is 3 vs. 3 pond hockey rules. Instead of your standard hockey goal, pond hockey uses a goal out of wood that is 6 feet wide with two foot long slots on either side that the puck can score in. There are no goalies allowed. The teams play two halves, ten minutes a piece.

The Lakeside employees work diligently every year to provide a rink, even when, like this year, it is difficult to see the end product being skateable. They wanted to shout a big thank you to the Ritchey Family and



and Maryann Warnecke for helping administer and referee the tournament.

If you haven't had a chance to watch, there are quite a few of these teams that are fantastic! It's outside, but there is always a fire and concession stand serving hot cocoa and coffee, among other things. Start planning now to come watch next year in February. They always post on Facebook, go like Lakesides page and watch for the dates!

Historic Phillips Lodge

**"THE PINES"**  
at Island Park

208-558-0192

**Get a great rate on Cabins!**  
Stay in a one, two, or three bedroom cabin  
Every cabin includes private hot tub  
Fireplace and WIFI TV

**Open**  
Full Bar  
Daily  
8 am – 8 pm  
Closed on Wednesday

Serving Breakfast, Brunch,  
and Dinner  
**Homemade Soups Everyday**  
**Prime Rib Everyday**

208-558-9379 – Lodgepole Grill

[Cabins@PinesIslandPark.com](mailto:Cabins@PinesIslandPark.com)



# Restaurant

Lunch 11am-5pm  
Dinner 5pm-9pm  
Daily Specials

# Tavern

Full Bar  
Pool Table  
Shuffle Board  
Live Music



We Proudly Serve  
Idaho Grown  
Miller Ranch Beef



208-569-4763

Let Solar Scrub keep your solar panels  
clean & producing optimal power  
generation all year long.

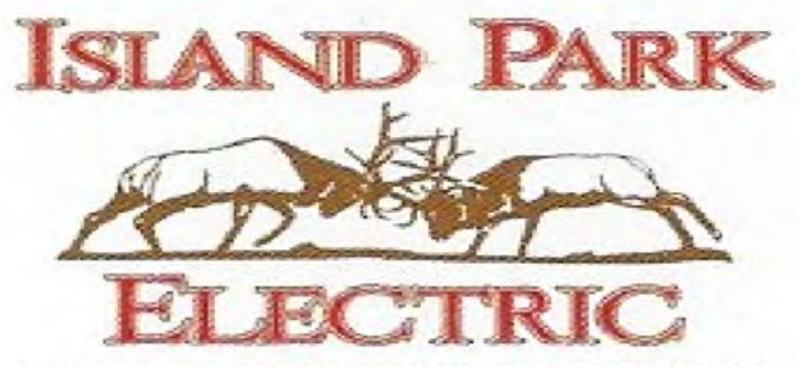
We also do exterior cleaning of  
businesses and homes.

Serving all of Southeast Idaho

Call us for a Free Quote



- Trash Service  
Weekly pick up  
Bear proof containers
- Dumpster rental  
7 x 14 x 4 Bins  
\$200/wk + \$100/delivery + dump fee
- Equipment rental  
Forklift  
\$210/day  
\*call for discounted long term pricing



4108 S Big Springs Road  
Macks Inn, Idaho 83433

# Come Live the Mountain Life!



ipidaho.com



Patty Laritz-Bithell | Patty@IpIdaho.com | (208) 860-4846



**Income from Nightly Rentals - Commercial**  
3519 Yale Kilgore  
MLS # 2157469  
\$1,250,000



**2 RENTAL UNITS**  
3771 Moose Breath Lane  
MLS # 2161921  
\$840,000



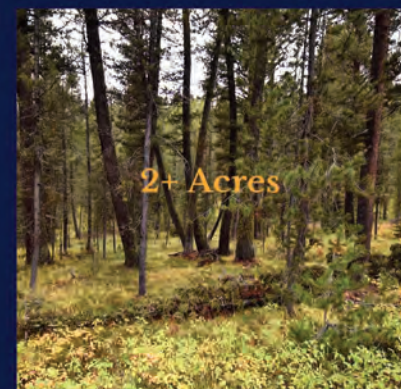
**Lots in Buttermilk Area**  
TBD Totem Rd  
MLS # 2161709, etc  
\$199,900 Ea/lot



**NEW SUBDIVISION**  
4920 Alpenglow Way  
MLS # 2160452  
\$264,000



**MACK'S INN - Apartment over garage**  
4266 Gooding Street  
MLS # 2153381  
\$1,099,999



**YALE CREEK**  
4125 Ponderosa Dr  
MLS # 2160382  
\$250,000



**4 active nightly rentals - 5+ Acres - Commercial**  
3555 Yale Kilgore  
MLS # 2156139  
\$2,000,000



## LIST RIGHT

I prepare a strong value proposition for potential buyers. We get the cabin in the right condition to list at the right price, then highlight your home's attributes with professional photography, drone footage, and/or 3D tours as appropriate to the market.